

*Vault*

**CONFERENCE JOURNAL**

**1954**

**Pennsylvania  
New Jersey  
District**

**The PILGRIM  
HOLINESS  
CHURCH**

## MISSIONARY TRIBUTE

Reverend and Mrs. Leonard Leitzel, members of this conference with honorary status while serving with the Foreign Missionary Department, are to be commended for their wonderful ministry in Surinam, South America.

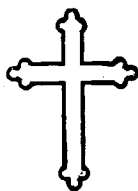
Pioneers of the church in this field of labor, they have, by the help of our God, accomplished the miraculous during the past eight years. At present the Lord is giving them a strong foothold among the primitive bush negroes of the interior.

Pray fervently for **your** missionaries this year, and don't forget to remember them upon occasion, with tokens of your love and esteem.

1954  
JOURNAL AND MINUTES  
of the  
41ST ANNUAL CONFERENCE  
*Pennsylvania-New Jersey District*  
THE PILGRIM HOLINESS CHURCH

June 28, 29, 1954

Convened at  
EASTERN PILGRIM COLLEGE  
ALLENTOWN, PENNSYLVANIA



REVEREND HAROLD R. CROSSER  
Conference Secretary  
Editor

Price: 45c

## TABLE OF CONTENTS

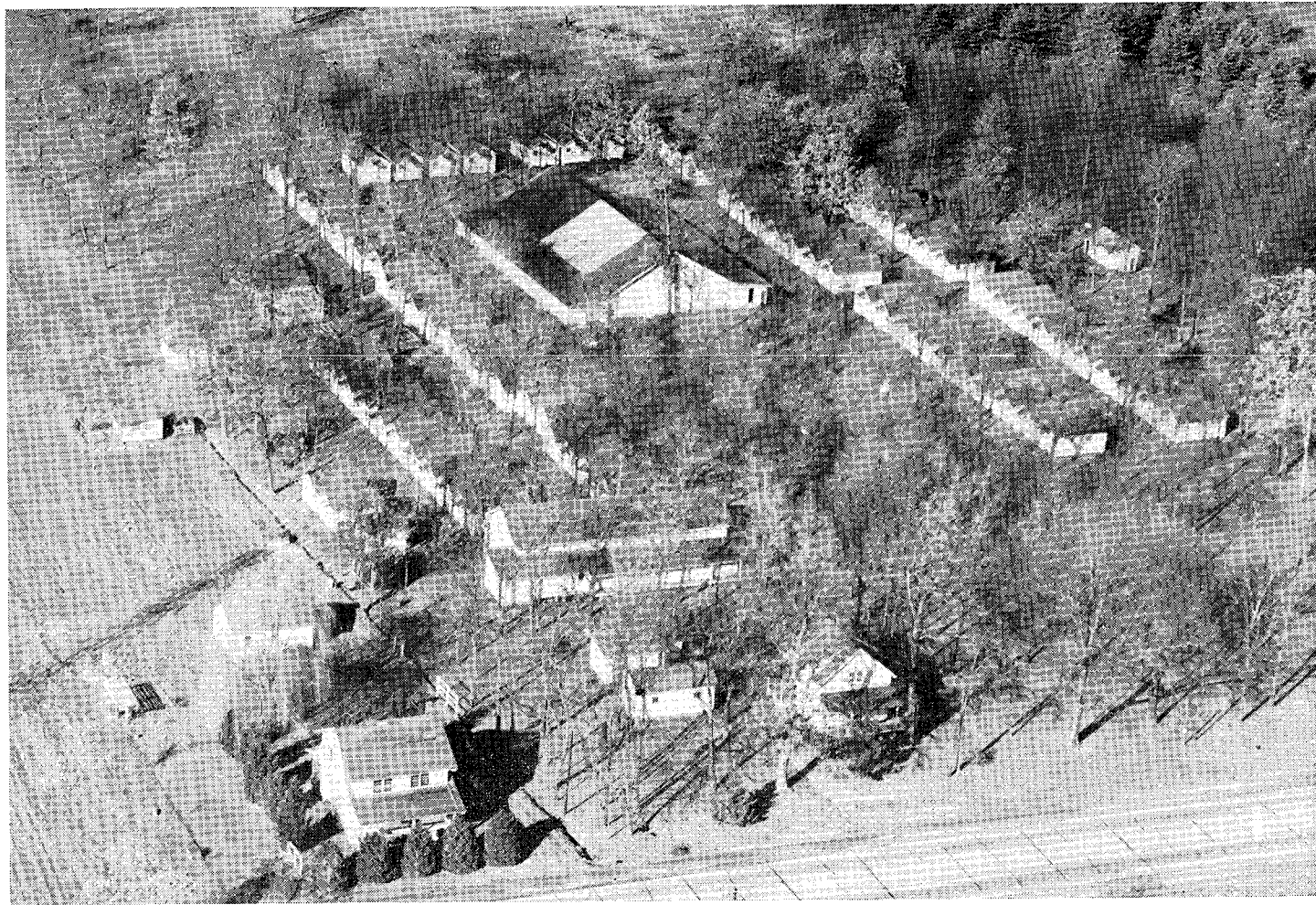
	Pages
District Bulletin Board .....	3-5
New District Council.....	6

### Official Directory

Officers and Committees for 1954-1955.....	7, 8
Ministerial Directory.....	8-10
Evangelistic Listing.....	10
Ministerial Transfers.....	10
Directory of Churches.....	10, 11
Zone Directory of Churches.....	11, 12
In Memoriam.....	12

### Conference of 1954

Officers and Committees of.....	13, 14
Conference Roll Call.....	14-16
Conference Proceedings.....	16-23
Reverend Melvin Snyder.....	17
Conference Reports .....	23-33
District Superintendent.....	23, 24
Auditing Committee.....	25
District Treasurer .....	25-28
Home Missionary Committee.....	28, 29
Secretary of Sunday Schools.....	29, 30
Secretary of Youth.....	30, 31
Resolutions Committee .....	31-33
Ways and Means Committee .....	33
Statistical and Financial.....	34-45
Permanent Legislation.....	46-50
General Resolutions .....	46, 47
Ways and Means.....	47-50
Standing Rules .....	Back Cover



AERIAL VIEW OF THE SUNBURY CAMP MEETING ASSOCIATION GROVE  
Plan to attend a spiritual feast of good things on these grounds July 1-10, 1955.



VIEW OF THE SUNBURY CAMP MEETING GROVE

The District Camp Meeting will convene in this beautiful and commodious  
setting July 1-10, 1955.

# *District Bulletin Board*

1954 - 1955

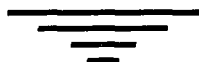


## MINISTERIAL CONVENTION

April 12-14, 1955

Reverend F. J. Goins, Speaker

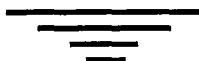
EASTERN PILGRIM COLLEGE



## DISTRICT CONFERENCE

June 7, 8, 1955

EASTERN PILGRIM COLLEGE



## DISTRICT CAMP MEETING

July 1-10, 1955

SUNBURY CAMP GROUND

Located on U. S. Routes 11 and 15

HUMMELS WHARF, PENNA.

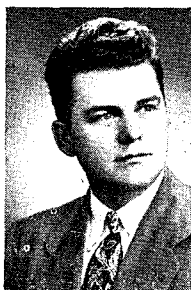
# D I S T R I C T C O U N C I L



G. A. CASTEVENS  
*Superintendent*



WALTER F. BUBB  
*Assistant  
Superintendent*



HAROLD R. CROSSER  
*Secretary*



JOHN P. CAMPBELL  
*Treasurer*



EDWARD T. HOUSTON  
*Advisory*



R. D. GUNSALUS  
*Advisory*



RAYMOND HOFFMAN  
*Advisory*



LODGE W. CHAPPELL  
*Advisory*



OLIVER G. HOLDEN  
*Advisory*



# OFFICIAL DIRECTORY

## OFFICERS AND COMMITTEES FOR 1954-1955

### DISTRICT COUNCIL

SUPERINTENDENT.....	G. A. Castevens
ASSISTANT SUPERINTENDENT.....	Walter F. Bubb
SECRETARY.....	Harold R. Crosser
TREASURER.....	John P. Campbell
ADVISORY.....	Edward T. Houston
ADVISORY.....	R. D. Gunsalus
ADVISORY.....	Raymond Hoffman
ADVISORY.....	Oliver G. Holden
ADVISORY.....	Lodge W. Chappell

### EXAMINING BOARD

Edward Crosser.....	3 year term
C. F. Kresge.....	2 year term
C. E. Wetzel.....	1 year term

### BOARD OF HOME MISSIONS

Edgar J. Haskins.....	3 year term
C. F. Kresge.....	2 year term
E. E. Hostetter.....	1 year term

### BOARD OF TRUSTEES

G. A. Castevens	Walter F. Bubb	Harold R. Crosser
John P. Campbell	Edward T. Houston	R. D. Gunsalus
Raymond Hoffman	Oliver G. Holden	Lodge W. Chappell

### EASTERN PILGRIM COLLEGE BOARD REPRESENTATIVES

#### DISTRICT REPRESENTATIVES

G. A. Castevens	Irvin Crissinger
-----------------	------------------

#### REPRESENTATIVES AT LARGE

Frank Schweitzer, Chairman	Albert Massey, Secretary
----------------------------	--------------------------

### DISTRICT SUNDAY SCHOOL COMMITTEE

G. A. Castevens.....	Chairman
Harold R. Crosser, 3 year term.....	Promotional Secretary
Edward T. Houston, 2 year term	
Bobbie Bidwell, 1 year term	

### DISTRICT YOUTH COMMITTEE

G. A. Castevens.....	Chairman
Howard J. Frey.....	Executive Secretary

### ZONE LEADERS

New Jersey.....	Paul W. Braisted	Central.....	Charles Lewis
South Eastern.....	William B. Derr	South Central.....	Charles Sorrells
Northeastern.....	Earl Rutherford	North Central.....	Albert Massey
Western.....			Franklin Greenley

**RESOLUTIONS**

R. F. Finch, Chairman  
 George Culver, Vice Chairman  
 Paul Braisted, Secretary  
 D. I. McCracken  
 Charles Lewis  
 Robert Seelig  
 Daniel Gehman

**PUBLICITY & REPORTING**

G. A. Castevens  
 M. E. Dieter  
 Harold R. Crosser

**EDITING**

Harold R. Crosser

**AUDITING**

Elmer J. Hocking, Chairman  
 William B. Derr, Secretary  
 Wilbur Bubb

**STATISTICIAN**

E. L. Adams

**WAYS AND MEANS**

Howard J. Frey, Chairman  
 Earl Rutherford, Vice Chairman  
 Albert Massey, Secretary  
 Franklin Greenley  
 John A. Gangaware  
 Verino G. Gattone  
 William C. Bloom

**MEMOIRS**

Robert C. Dettmer, Chairman  
 Clifford Berry, Secretary  
 Robert Campbell

**RECEPTION**

Edward Shemelia  
 Leroy Pennycoff  
 Charles Sorrells

**MINISTERIAL DIRECTORY**

1954 - 1955

**ORDAINED MINISTERS**

ADAMS, E. L.	294 Moore St., Millersburg, Pa.	24R-2
BERRY, CLIFFORD	714 N. Third St., Millville, N. J.	2-0810
BIDWELL, BOBBIE	299 E. Broadway, Salem, N. J.	599-R
BLOOM, WILLIAM C.		1
BRAISTED, PAUL	277 Bank St., Bridgeton, N. J.	9-2226
BUBB, WALTER F.	671 Bellefonte Ave., Lock Haven, Pa.	2053
BUBB, MRS. WALTER F.	671 Bellefonte Ave., Lock Haven, Pa.	2053
CAMPBELL, JOHN P.	438 Windsor St., Reading, Pa.	5-6330
CASTEVENS, G. A.	715 N. Maxwell St., Allentown, Pa.	HElock 4-8910
CHAPPELL, LODGE W.	3873 N. 6th St., Harrisburg, Pa.	6-7803
CHATFIELD, R. W.	82 Brown St., E. Stroudsburg, Pa.	
CROSSER, EDWARD	524 East Philadelphia St., York, Pa.	3-6448
CROSSER, HAROLD R.	R. D. 1, Box 223, Paxinos, Pa.	Sunbury 2123R3
CULVER, GEORGE E.	420 S. Front St., Milton, Pa.	245-W
DANIELS, HARRY J.	137 W. Broad St., Shillington, Pa.	Reading 7-0881
DERR, WILLIAM	59 Copper Beech Lane, Levittown, Pa.	
DETTMER, R. C.	R. F. D. 1, Box 16, Bellefonte, Pa.	4409
DIETER, M. E.	855 N. Oswego St., Allentown, Pa.	HEmlock 4-1828
DUELL, GEORGE E.	Sagon, Pa.	Shamokin 1894R
FERGUSON, THOMAS B.	Box 298, Milroy, Pa.	Reedsville 206R1
FINCH, ROBERT F.	R. F. D. 1, Watontown, Pa.	4158
FISHER, HERBERT W.	R. F. D. 2, Sunbury, Pa.	Sunbury 669-J11
FITCH, MRS. CONSTANCE	900 N. Hobart Blvd., Los Angeles, Calif.	
FITCH, LLOYD	900 N. Hobart Blvd., Los Angeles, Calif.	
FLEXON, JAMES	3551 Forest Manor, Indianapolis, Indiana.	
FREY, HOWARD J.	339 Walnut St., Sunbury, Pa.	2694-R
GANGAWARE, JOHN A.	Pocono Lake, Pa.	22236
GARMAN, EMMA	3416 Montrose Ave., Laureldale, Pa.	
GATTONE, VERINO G.	1117 Liberty St., Allentown, Pa.	HEmlock 2-7988
GORMAN, DAVID	2161 E. William St., Phila., Pa.	Garfield 2-7125
GREENLEY, F. W.	R. F. D. 1, Loganton, Pa.	
GUNSALUS, R. D.	853 N. Maxwell, Allentown, Pa.	HEmlock 3-2973
HAIN, HOMER	R. F. D. 1, Lykens, Pa.	Elizabethville 124-R-21

HAIN, MARLIN .....	Glen Iron, Pa.	Mifflinburg 6-7452
HASKINS, EDGAR J. ....	R. F. D. 1, Ulster, Pa.	Rome 43-F-12
HATCHER, BESSIE F. ....	Box 157, Yardville, N. J.	
HOCKING, ELMER J. ....	45 E. Ettwein, Bethlehem, Pa.	University 8-0790
HOFFMAN, HARLEY .....		
HOFFMAN, MRS. HARLEY .....		
HOFFMAN, RAYMOND .....	R. F. D. 1, Box 223A, Paxinos, Pa.	
HOLDEN, OLIVER G. ....	R. D. 1, Vincentown, N. J.	Sunbury 2330-J-1
HONEYCUTT, W. E. ....	% Elmer J. Hocking, 45 E. Ettwein St., Bethlehem, Pa.	8296
HONEYCUTT, MRS. W. E. ....	% Elmer J. Hocking, 45 E. Ettwein St., Bethlehem, Pa.	
HOOVER, DEBORAH T. ....	321 Middlesex St., Gloucester City, N. J.	GL 6-4556
HOSTETTER, E. EUGENE .....	609 S. Jefferson St., Mt. Union, Pa.	673-R
HOUSTON, EDWARD T. ....	7 N. Second St., Stroudsburg, Pa.	3166
JOHNSON, J. LAMONT .....	Allenwood, Pa.	Montgomery 5755
KRATZER, IRVIN E. ....	Hyde, Clearfield Co., Pa.	Clearfield 5-5958
KRESGE, C. F. ....	24 Lincoln Ave., Jamesburg, N. J.	1-0595W
LEITZEL, LEONARD W. ....	Pelgrim Kondre, Moengo, Surinam, South America (Honorary Status)	
LEWIS, CHARLES .....	Box 3, Rebuck, Pa.	
LUTZ, RUSSELL W. ....	R. D. 1, Julian, Pa.	Bellefonte Elva 5-6296
LUTZ, MRS. RUSSELL W. ....	R. D. 1, Julian, Pa.	Bellefonte Elva 5-6296
MASSEY, ALBERT .....	1029 Tucker St., Williamsport, Pa.	2-3547
MASTERMAN, KENNETH .....	1425 E. Cedar St., Allentown, Pa.	
MCCRACKEN, D. I. ....	520 1/2 Lincoln Avenue, Jersey Shore, Pa.	672R
RUTHERFORD, E. S. ....	Box 25, Cherryville, Pa.	Slatington 3527
SCHWEITZER, FRANK H. ....	Glassboro, New Jersey	
SEELIG, ROBERT .....	Main St., Muir, Pa.	Tower City 1R2
SHAFFER, CARL D. ....	R. F. D. 1, Osceola Mills, Pa.	3805
SHAFFER, MRS. CARL D. ....	R. F. D. 1, Osceola Mills, Pa.	3805
SHAFFER, DAVID W. ....	540 W. Monument St., Colorado Springs, Colo.	
SHEMELIA, E. J. ....	18 Day St., East Stroudsburg, Pa.	
SIEFKEN, OSCAR .....	Port Matilda, Pa.	
SMITH, MRS. J. HARRY .....	40 Villa Ave., Pitman, N. J.	3-7469
STROHL, MRS. FLOREIN .....	17 Franklin St., Port Jervis, New York.	
WALLACE, R. V. ....	Post Office Box 133, Muncy, Pa.	
WASHBURN, JOHN J. ....	Beech Creek, Pa.	229W
WELCH, WILLIAM .....	Beech Creek, Pa.	1523
WERT, C. E. ....	854 Maxwell St., Allentown, Pa.	HEmlock 3-1098
ZEHNER, L. W. ....	154 N. Main St., Pine Grove, Pa.	

### LICENSED MINISTERS—FIRST ORDINATION

BALLIET, BURTON .....	% Earl Smith, Eben St., Glassboro, N. J.	
BERTOLET, MRS. GRANT R. ....	1349 Perkiomen St., Reading, Pa.	2-1012
BUBB, WILBUR .....	1425 East Cedar St., Allentown, Pa.	
CAMPBELL, ROBERT N. ....	438 Windsor St., Reading, Pa.	5-6330
CULP, RAYMOND F. ....	R. F. D. 1, Cape May, N. J.	4-8715
CULVER, MRS. GEORGE E. ....	420 S. Front St., Milton, Pa.	245-W
DETMER, MRS. ROBERT C. ....	R. F. D. 1, Bellefonte, Pa.	4409
DILL, WALTER .....	10 E. Ridge Rd., Linwood, Pa.	
FETTEROLF, LEROY .....	1425 E. Cedar St., Allentown, Pa.	
FILE, GEORGE .....	1425 E. Cedar St., Allentown, Pa.	
FRANTZ, MILTON .....	524 1/2 S. First St., Bangor, Pa.	872-L
FRANTZ, MRS. MILTON .....	524 1/2 S. First St., Bangor, Pa.	872-L
GEHMAN, DANIEL L. ....	1508 Genesee St., Trenton, N. J.	Export 3-8981
GREENLEY, MRS. F. W. ....	R. F. D. 1, Loganton, Pa.	512
MCCRACKEN, MRS. D. I. ....	520 1/2 Lincoln Ave., Jersey Shore, Pa.	672-R
MAYES, EDWIN .....	591 E. Main St., Middleburg, Pa.	
MAYES, MRS. EDWIN .....	591 E. Main St., Middleburg, Pa.	
MILLER, WILLIAM .....	3403 Hanover Acres, Allentown, Pa.	

MUSGROVE, WAYNE .....	1425 E. Cedar St., Allentown, Pa.	
NEWTON, FREDERIC .....	R. D. 1, Howard, Pa.	
PARKER, THELMA .....	1416 Summit Ave., Linwood, Pa.	
PENNYCOFF, LEROY .....	1425 E. Cedar St., Allentown, Pa.	
SHILEY, LEONARD .....	1425 E. Cedar St., Allentown, Pa.	
SMITH, GEORGE .....	69 Chauncey St., Trenton, N. J.	
SNADER, ALBERT .....	R. D. 1, Sinking Springs, Pa.	Reading 58507
SORRELLS, CHARLES H. ....	409 Delaware St., Harrisburg, Pa.	
THURSTON, WILLIAM .....	1425 E. Cedar St., Allentown, Pa.	
WALLS, ALLWIN A. ....	409 Pierce St., Lansdale, Pa.	
WOLFE, J. E. ....	General Delivery, Sunbury, Pa.	
WOOTEN, DAVID .....	R. D. 1, Howard, Pa.	
YODER, MISS EMMA .....	Box 298, Milroy, Pa.	
ZEHNER, MRS. L. W. ....	Glen Iron, Pa.	

### ORDAINED DEACONESSSES

FINCH, MRS. R. F. ....	R. F. D. 1, Watsontown, Pa.	4158
KEY, MRS. EDWARD C. ....	518 Hazel Ave., Vineland, N. J.	5-5179

### EVANGELISTIC LISTING

Rev. R. W. Chatfield	Rev. W. E. Honeycutt
Rev. Walter Dill	Rev. Kenneth Masterman
Rev. David Gorman	Rev. Thelma Parker
Rev. Oliver G. Holden	Rev. Eldon T. Rotz
Rev. E. J. Shemelia	

### MINISTERIAL TRANSFERS

*Mark H. Bowman to the Eastern District.*  
*Mrs. Mark H. Bowman to the Eastern District.*  
*Paul Dieter to the Eastern District.*  
*Maurice Hobart to the New York District.*  
*Elmer Hocking from the Eastern District.*  
*W. E. Honeycutt from the Illinois District.*  
*Mrs. W. E. Honeycutt from the Illinois District.*  
*Charles Lewis from the Eastern District.*  
*Franklin J. Lint to the New York District.*  
*Kenneth Masterman from the New York District (since Conference).*  
*Thelma Parker from the Eastern District.*  
*Roland E. Pickering to the Church of the Nazarene.*  
*Earl Rutherford from the Pittsburgh District.*  
*Frank H. Schweitzer from the New York District (since Conference).*

### DIRECTORY OF CHURCHES

ALLENTOWN .....	1119 Liberty Street, Allentown, Pa.
ALLENWOOD .....	U. S. Route 15, Allenwood, Pa.
ARMSTRONG VALLEY .....	Upper Armstrong Valley, R. D. 1, Halifax, Pa.
ASHLAND .....	R. D. 1, Osceola Mills, Pa.
AUGUSTAVILLE .....	Penna. Route 890, Augustaville, Pa.
BEECH CREEK .....	Route 220 and Maple Avenue, Beech Creek, Pa.
BETHLEHEM .....	Goepp and New Streets, Bethlehem, Pa.
BRIDGETON .....	277 Bank Street, Bridgeton, N. J.
BUSH HOLLOW .....	R. D. 1, Julian, Pa.
CHERRYVILLE .....	Danielsville Road, Cherryville, Pa.

COLEVILLE.....	R. D. 1, Bellefonte, Pa.
DELAWARE RUN.....	R. D. 1, Watsontown, Pa.
ERMA.....	R. D. 1, Route 9, Cape May, N. J.
FRACKVILLE.....	25 North Lehigh Avenue, Frackville, Pa.
GLASSBORO.....	Glassboro, N. J.
GLEN IRON.....	Glen Iron, Pa.
GLOUCESTER CITY.....	902 Bergen St., Gloucester City, N. J.
HARRISBURG 1st.....	1919 North Fourth Street, Harrisburg, Pa.
HIGHLAND.....	R. D. 1, Howard, Pa.
HYDE.....	Hyde, Clearfield Co., Pa.
JAMESBURG.....	22 Lincoln Avenue, Jamesburg, N. J.
JERSEY SHORE.....	Plymouth Avenue, Vilas Park, Jersey Shore, Pa.
LEBANON.....	419 South Ninth Street, Lebanon, Pa.
LINDEN HALL.....	
LOCK HAVEN.....	North Jones and Fourth Streets, Lock Haven, Pa.
LOGANTON.....	R. D. 1, Loganton, Pa.
MIDDLEBURG.....	516 East Main Street, Middleburg, Pa.
MILLERSBURG.....	294 Moore Street, Millersburg, Pa.
MILLVILLE.....	716 North Third Street, Millville, N. J.
MILROY.....	College Avenue, Milroy, Pa.
MILTON.....	420 South Front Street, Milton, Pa.
MT. UNION.....	611 South Jefferson Street, Mt. Union, Pa.
MUIR.....	West Main Street, Muir, Pa.
MUNCY.....	Carpenter Street, Muncy, Pa.
NORTH ROME.....	R. D. 1, Ulster, Pa.
PINE GROVE.....	154 North Main Street, Pine Grove, Pa.
POCONO LAKE.....	Penna. Route 940, Pocono Lake, Pa.
PORT MATILDA.....	Port Matilda, Pa.
READING.....	Washington and Mulberry Streets, Reading, Pa.
REBUCK.....	R. D. 1, Dornsife, Pa.
ROCKVILLE.....	4100 North Sixth St., Harrisburg, Pa.
SALEM.....	Smith and Walnut Streets, Salem, N. J.
SHILLINGTON.....	131 W. Broad Street, Shillington, Pa.
STATE COLLEGE.....	Logan and Walnut Streets, State College, Pa.
STONINGTON.....	U. S. Route 220, R. D. 2, Sunbury, Pa.
STROUDSBURG.....	208 Main Street, Stroudsburg, Pa.
SUMMIT HILL.....	R. D. 1, Howard, Pa.
SUNBURY.....	Walnut and Center Streets, Sunbury, Pa.
TRENTON.....	549 Schiller Avenue, Trenton, N. J.
TURNERVILLE.....	Sicklerville Road, Turnerville, N. J.
WILLIAMSPORT.....	Tucker and Sherman Streets, Williamsport, Pa.
WOODBURY.....	Oak Street, Woodbury, N. J.
YORK.....	524 East Philadelphia Street, York, Pa.

### UNORGANIZED CHURCHES

LEVITTOWN.....	59 Copper Beech Lane, Levittown, Pa.
WEST PEN ARGYL.....	R. D. 1, Pen Argyle, Pa.

### ZONE DIRECTORY OF CHURCHES

#### NEW JERSEY

Bridgeton	Glassboro	Jamesburg	Trenton	Salem
Erma	Gloucester	Millville	Turnersville	Woodbury

#### NORTHEASTERN

Bethlehem	Cherryville	Pocono Lake	Stroudsburg	West Pen Argyl
-----------	-------------	-------------	-------------	----------------

#### SOUTHEASTERN

Eastern Pilgrim College	Levittown	Reading
Allentown		Shillington

**NORTH CENTRAL**

Allenwood    Delaware Run    Milton    Muncy    North Rome    Williamsport

**CENTRAL**

Augustaville    Glen Iron    Middleburg    Rebuck    Stonington    Sunbury

**SOUTH CENTRAL**

Armstrong Valley    Harrisburg    Muir    Millersburg    Rockville  
Frackville    Lebanon    Pine Grove    York

**WESTERN**

Ashland    Coleville    Mt. Union    Summit Hill    Linden Hall  
Beech Creek    Highland    Port Matilda    Hyde    Lock Haven  
Bush Hollow    Milroy    State College    Jersey Shore    Loganton

---

## In Memoriam

**REV. WM. R. MUNSON**

Our Christian friend and brother, Reverend Wm. R. Munson, pastor of the Pilgrim Holiness Church at Harrisburg, Pa., was called home to be with his Lord on Nov. 6, 1953.

Bro. Munson contributed thirty-two years of active and faithful service to the Church. He served pastorates at Port Matilda, Coleville, Delaware Run, Erma, Salem, and Harrisburg.

The absence of our Bro. Munson is deeply felt by the members of this Conference.

"Blessed are the dead which die in the Lord from henceforth: yea saith the Spirit, that they may rest from their labours; and their works do follow them." Rev. 14:13.

**LAY PILGRIMS**

Our Conference bears the loss of twelve lay Pilgrims who have gone to be with their Saviour.

"The memory of the just is blessed." Prov. 10:7.

<b>MRS. FLORA MOSER</b>	-----	<b>Allentown, Pa.</b>
<b>MRS. HARRY PENNYCOFF</b>	-----	<b>Allenwood, Pa.</b>
<b>MRS. BESSIE STONE</b>	-----	<b>Ashland, Pa.</b>
<b>MRS. SYLVIA BERRY</b>	-----	<b>Beech Creek, Pa.</b>
<b>MRS. CLARENCE JOHNSON</b>	-----	<b>Bridgeton, N. J.</b>
<b>MISS RACHEL RESIDE</b>	-----	<b>Bush Hollow, Pa.</b>
<b>MR. TED HILL</b>	-----	<b>East Bangor, Pa.</b>
<b>MISS CARRIE STRINE</b>	-----	<b>Milton, Pa.</b>
<b>MISS ALICE COLLEY</b>	-----	<b>Muncy, Pa.</b>
<b>MRS. ANNA V. KUTZ</b>	-----	<b>Reading, Pa.</b>
<b>MRS. HATTIE DIETER</b>	-----	<b>Williamsport, Pa.</b>
<b>MRS. EDITH WOOD</b>	-----	<b>Woodbury, N. J.</b>

It is proper that this conference stand and dedicate a moment in silence as a memorial to these saints.

V. G. GATTONE    B. BIDWELL    F. NEWTON  
Committee on Memoirs

## OFFICERS AND COMMITTEES OF THE 1954 CONFERENCE

**Presiding Officer**-----Rev. Melvin G. Snyder,  
Second Assistant General Superintendent  
**Superintendent**-----G. A. Castevens  
**Assistant Superintendent**-----Walter F. Bubb  
**Secretary**-----Harold R. Crosser  
**Treasurer**-----John P. Campbell  
**Advisory**-----Rev. R. D. Gunsalus  
**Advisory**-----Rev. Edward T. Houston  
**Advisory**-----Rev. Raymond Hoffman  
**Advisory**-----Rev. Oliver G. Holden  
**Advisory**-----Rev. Lodge W. Chappell

### EXAMINING BOARD

C. F. Kresge-----3 year term  
M. E. Dieter-----2 year term  
Edward Crosser-----1 year term

### BOARD OF HOME MISSIONS

G. A. Castevens---Superintendent  
C. F. Kresge-----3 year term  
E. E. Hostetter-----2 year term  
Edgar J. Haskins-----1 year term

### DISTRICT SUNDAY SCHOOL COMMITTEE

G. A. Castevens-----Chairman  
Harold R. Crosser-----Promotional Secretary  
Oliver G. Holden      George E. Culver      Charles H. Sorrells

### DISTRICT YOUTH COMMITTEE

Chairman-----G. A. Castevens  
Executive Secretary-----Howard J. Frey

### ZONE LEADERS

New Jersey-----Paul Braisted	Central-----Herbert Fisher
Southeastern-----William Derr	South Central-----Lodge Chappell
Northeastern-----William Schaffner	North Central-----Albert Massey
	Western-----Russell W. Lutz

### RESOLUTIONS

R. F. Finch, Chairman  
Edward Crosser, Vice Chairman  
Paul Braisted, Secretary  
Marlin Hain  
William Bloom  
Raymond F. Culp

### WAYS AND MEANS

Howard J. Frey, Chairman  
Russell L. Lutz, Secretary  
Robert C. Dettmer  
I. E. Kratzer  
John J. Washburn  
William Derr

### EDITING

Harold R. Crosser

### STATISTICS

E. Liden Adams

### AUDITING

George E. Culver  
Clifford Berry  
F. W. Greenley

### MEMOIRS

V. G. Gattone  
Frederic Newton  
Bobbie Bidwell

### RECEPTION

D. I. McCracken  
John A. Gangaware  
J. Lamont Johnson

**PUBLICITY**

G. A. Castevens  
Elmer J. Hocking

**REPORTING**

M. E. Dieter

**DELEGATES TO THE GENERAL CONFERENCE****EX OFFICIO MINISTERIAL DELEGATES**

G. A. Castevens	.....District Superintendent
Walter F. Bubb	.....Assistant Superintendent
Harold R. Crosser	.....Secretary
John P. Campbell	.....Treasurer

**MINISTERIAL DELEGATES**

M. E. Dieter  
C. E. Wert  
Edward Houston  
E. E. Hostetter  
George E. Culver  
Lodge Chappell  
Edgar J. Haskins  
W. C. Bloom

**LAY DELEGATES**

Irvin Crissinger  
Earl Doll  
Roy Spotts  
Ed Harper  
L. Kerstetter

## CONFERENCE ROLL CALL

### ORDAINED MINISTERS

E. L. Adams  
Clifford Berry  
William C. Bloom  
Paul Braisted  
Walter F. Bubb  
John P. Campbell  
G. A. Castevens  
Lodge W. Chappell  
Edward Crosser  
Harold R. Crosser  
George E. Culver  
Harry J. Daniels  
William Derr  
R. C. Dettmer  
M. E. Dieter  
Thomas B. Ferguson  
R. F. Finch  
Herbert W. Fisher  
Howard J. Frey  
John A. Gangaware  
Verino G. Gattone  
F. W. Greenley  
R. D. Gunsalus  
Marlin Hain  
Edgar J. Haskins  
Elmer J. Hocking

Harley Hoffman  
Mrs. Harley Hoffman  
Raymond Hoffman  
Oliver G. Holden  
W. E. Honeycutt  
Deborah T. Hoover  
E. E. Hostetter  
Edward T. Houston  
J. Lamont Johnson  
Irvin E. Kratzer  
C. F. Kresge  
Charles Lewis  
Russell W. Lutz  
Mrs. Russell W. Lutz  
Albert Massey  
D. I. McCracken  
E. S. Rutherford  
Carl D. Shafer  
Mrs. Carl D. Shafer  
E. J. Shemelia  
Oscar Siefken  
Mrs. J. Harry Smith  
Mrs. Florein Strohl  
John J. Washburn  
William Welch  
L. W. Zehner



# LICENSED MINISTERS

Burton Balliet	Mrs. Milton Frantz	Robert Seelig
Bobbie Bidwell	Daniel L. Gehman	David W. Shafer
Wilbur Bubb	Mrs. F. W. Greenley	George Smith
Robert N. Campbell	Edwin Mayes	Albert Snader
Raymond F. Culp	Mrs. Edwin Mayes	Charles H. Sorrells
Mrs. George E. Culver	Mrs. D. I. McCracken	Allwin A. Walls
Mrs. Robert C. Dettmer	Fred Newton	J. E. Wolfe
Leroy Fetterolf	Thelma Parker	Miss Emma Yoder
Milton Frantz	Leroy Pennycoff	Mrs. L. W. Zehner

# ORDAINED DEACONESES

Mrs. Edward C. Key

CHURCH	LAYMEN	DELEGATE
ALLENTOWN.....		Mrs. Clarence McDonald
ALLENWOOD.....		Mrs. Helen Ranck
ARMSTRONG VALLEY .....		No Delegate
ASHLAND .....		No Delegate
AUGUSTAVILLE.....		George Wolfe
BEECH CREEK.....		Chauncey Weaver
BETHLEHEM.....		{ Mrs. Viola Van Why Mrs. Mary Schaffner
BRIDGETON.....		Mrs. Anna Hemple
BUSH HOLLOW.....		Mrs. Martha Fike
CHERRYVILLE.....		Mrs. Fred Oplinger
COLEVILLE.....		Miss Virginia Stover
DELAWARE RUN.....		Mrs. William Kulp
ERMA .....		No Delegate
FRACKVILLE .....		No Delegate
GLASSBORO.....		Howard Thurston
GLEN IRON.....		Mrs. Leroy Fetterolf
GLOUCESTER CITY.....		Mrs. Ella Hoover
HARRISBURG.....		Mrs. Amanda Robbins
HIGHLAND.....		Louise Nyman
HYDE.....		Mrs. Orpha Meredith
JAMESBURG.....		Mrs. George Vogel
JERSEY SHORE.....		Mrs. Carl Hackett
LEBANON.....		No Delegate
LINDEN HALL.....		No Delegate
LOCK HAVEN.....		{ Clayton H. Fye Gardner S. Barner
LOGANTON.....		Shirley Shreckengast
MIDDLEBURG.....		No Delegate
MILLERSBURG.....		Mrs. Joseph Koppenhaver
MILLVILLE.....		Mrs. Clifford Berry
MILROY.....		Mrs. Catherine Miller
MILTON.....		Mrs. Emma McLaughlin

CHURCH	DELEGATE
MT. UNION.....	John Horne
MUIR.....	Irvin Miller
MUNCY.....	No Delegate
NORTH ROME.....	William Sackett
PINE GROVE.....	Edwin Morgan
POCONO LAKE.....	Mrs. Aaron Lerch
PORT MATILDA.....	No Delegate
READING.....	Mrs. Bessie Granger
REBUCK.....	Marlin Crissinger
ROCKVILLE.....	Mrs. Walter Sweitzer
SALEM.....	John Haiduck
SHILLINGTON.....	Walter Linderman
STATE COLLEGE.....	No Delegate
STONINGTON.....	Mrs. Marian Clark
STROUDSBURG.....	{ Mrs. Hilda Metzgar Mrs. Pearl Cramer
SUMMIT HILL.....	
SUNBURY.....	Mrs. Effie Conrad
TRENTON.....	Mrs. Daniel Gehman
TURNERVILLE.....	Mrs. Ethel Clark
WILLIAMSPORT.....	No Delegate
WOODBURY.....	No Delegate
YORK.....	Clarence Faust

## CONFERENCE PROCEEDINGS

### FIRST SESSION JUNE 28, 1954—9:00 A. M.

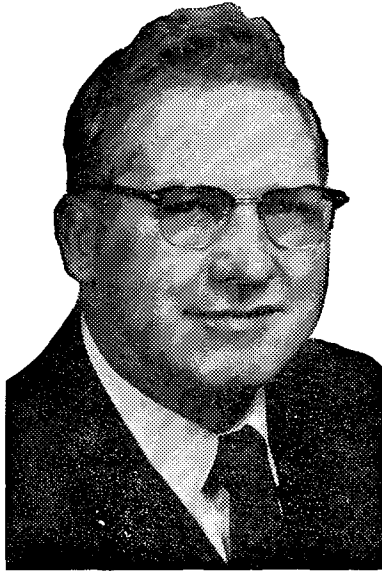
At the call of the District Superintendent, Reverend G. A. Castevens, the forty-first annual conference of the Pennsylvania-New Jersey District of the Pilgrim Holiness Church convened in the auditorium of Eastern Pilgrim College at 9:00 a. m. June 28, 1954.

The conference communion service was opened with the singing of "The Blood Will Never Lose Its Power," after which the Assistant Superintendent, Reverend Walter F. Bubb, led in prayer. Reverend John P. Campbell read a scripture lesson from I Corinthians the eleventh Chapter.

After some words of encouragement to the hearts of God's children from the Superintendent, Reverend G. A. Castevens, communion was served under his direction to the members and friends of the conference. The presence of the Triune God was felt among His people.

In the unavoidable absence of Reverend Melvin Snyder, Second Assistant General Superintendent of the Pilgrim Holiness Church, who was scheduled to preside over the conference, Reverend G. A. Castevens called the conference to order. The roll call was taken.

The Reception Committee presented the following to the superintendent who introduced them to the conference: Reverend and Mrs. R. V. Wallace, Reverend W. E. Honeycutt, Reverend David Shafer, Reverend and Mrs. Charles Lewis, and Reverend Miss Thelma Parker. These fine folk were given a hearty welcome.



**REVEREND MELVIN SNYDER**

**Second Assistant General Superintendent of the Pilgrim  
Holiness Church and Presiding Officer of the 1954  
Conference of the Pennsylvania-New  
Jersey District**

By motion carried David Wooten, pastor of the Summit Hill Church was granted a seat in and the privileges of the conference bar. Brother Wooten, Reverend E. S. Rutherford, Reverend and Mrs. Elmer J. Hocking, and Rev. Robert Seelig, all new ministers in the district, were introduced to the conference by the District Superintendent.

The Assistant District Superintendent, Reverend Walter F. Bubb presided while Reverend G. A. Castevens, District Superintendent, read his report. It was moved and carried that the report be received with appreciation.

The Superintendent also read a supplemental report with suggested goals for the coming year and urged a revival of deep spiritual concerns in our midst. A motion carried that the conference be led in prayer by Brother Castevens regarding the challenge of lost souls and the need of the hour. A time of intercession and feeling prayer followed.

It was moved, seconded, and carried that copies of the supplemental report be mimeographed and distributed to all ministers.

Brother Castevens resumed the chair and the Assistant Superintendent Reverend Walter F. Bubb gave an oral report of his activities which was accepted by motion.

Brother Joseph Wooten of the Union Gospel Missionary Church, Marcus Hook, was presented by the Reception Committee and granted an honorary seat in the conference bar.

A letter of greeting from Sister Bessie F. Hatcher was read. A motion carried that the Secretary return greetings from the assemblage to Sister Hatcher.

By motion carried the time was extended until the reports of the Promotional Secretary of Sunday Schools, the Secretary of the Home Missionary Committee, and the Executive Secretary of Youth could be read.

A motion carried to accept the report of the Promotional Secretary of Sunday Schools with thanks.

Reverend Walter F. Bubb of the Lock Haven Church and Reverend Bobbie Bidwell of the Salem, N. J. Church were called forward to receive certificates of award for the largest increases in Sunday School attendance during the past year. These two pastors attributed their Sunday School successes to the activities of consecrated laymen. In this connection Mr. Clayton H. Fye and Mr. Gardner H. Barner of the Lock Haven Church were introduced to the conference and in the stead of their pastor received the certificates for the largest annual and quadrennial Sunday School increases.

Reverend E. E. Hostetter, Committee Secretary, read the Home Missionary Committee Report. By motion carried the report was received.

The annual report of the Executive Secretary of Youth, Reverend Howard J. Frey was received by motion.

Upon a motion to adjourn, the session was dismissed with prayer by Harold R. Crosser.

## **SECOND SESSION JUNE 28, 1954—2:00 P. M.**

The second session of the 41st annual conference of the Pennsylvania-New Jersey District opened with Reverend Oliver G. Holden leading the song "'Tis So Sweet to Trust in Jesus". Reverend Franklin W. Greenly of the Loganton Church led the gathering in prayer.

The Second Assistant General Superintendent, Reverend Melvin Snyder, was then introduced to the conference by the District Superintendent.

Brother Snyder gave words of greeting to the group and spoke briefly about the strong doctrinal and Biblical position we take and the seeming trend back to Bible fundamentals in liberal circles.

By motion carried it was decided that the roll call be dispensed with and that the roll be completed by the secretary.

The minutes were accepted and approved as read by motion.

The auditors report was read. A motion carried to accept the report.

Reverend John P. Campbell, District Treasurer, read the financial report covering the period from May 18, 1953 through May 15, 1954. It was moved, seconded, and carried to accept this report by standing, as a token of appreciation for the treasurer's work.

The Statistical Report was presented by Reverend E. L. Adams. This summation of statistics was received by motion carried.

Assistant General Superintendent Snyder then urged the pastors not to be slow to string the spiritual catch, pointing out that church membership is not to be construed as a display of perfect Christianity.

The Secretary of the Resolutions Committee reported.

It was moved and supported to adopt Resolution Number I. A motion for the previous question carried after an Amendment to the resolution was moved and seconded. A motion for the previous question carried after which the amendment was passed by voice vote.

A motion carried that the first order of business in the next session be a vote on Resolution Number I.

The sitting was adjourned by expiration of time.

Prayer was offered by Brother E. E. Hostetter.

### **THIRD SESSION JUNE 28, 1954—7:00 P. M.**

The third sitting of the 1954 conference convened with the singing of "Leaning on the Arms of Jesus" after which Reverend Russell W. Lutz petitioned divine help.

By motion the minutes of the previous session were approved as read.

Resolution No. I, the order of the day, carried by a divisional vote of 63 to 38. (See Report of Resolutions Committee for Resolutions I through XII.)

By motion made and seconded Resolution No. II was carried.

Resolution No. III was carried.

A motion carried to adopt Resolution No. IV.

Resolution No. V was carried by a large majority.

A substitute motion for Resolution No. VI was offered. The motion to substitute carried as well as the substitute motion.

Resolution No. VII setting goals for increased church membership and Sunday School attendance, was passed by unanimous vote of conference.

Resolution No. VIII was amended, and as amended, carried.

The passing of Resolution No. IX was by unanimous vote.

Walter Dill, song evangelist of the district and member of the Bethlehem Church was introduced to the gathering.

The Ways and Means Committee reported four matters dealing with District finance through the secretary, Reverend Russell W. Lutz.

Ways and Means Resolution No. I was carried. (See Report of the Ways and Means Committee for Resolutions I through IV.)

It was moved, seconded and carried to adopt Ways and Means Resolution No. II.

Ways and Means Resolution No. III was by motion amended. The amended resolution carried.

A motion carried to adopt Ways and Means Resolution No. IV.

Brother Fred Newton was appointed to serve on the Memorials Committee in the stead of Reverend Harley Hoffman whose leaving the conference was necessitated by emergency.

By motion it was decided to extend the time until the rest of the General Conference legislation, that has now become church law, could be read.

Because of extensive questioning concerning this material the session adjourned by motion before the reading was completed.

#### FOURTH SESSION JUNE 29, 1954—9:05 A. M.

The fourth conference session opened with spirited Gospel singing and a gracious season of prayer which was closed by Reverend Melvin Snyder, the presiding officer. The chorus of "The Comforter Has Come" was sung, during which refreshing showers of blessing and anointing fell on the group.

Brother Snyder continued his remarks of the previous session on a renaissance of fundamental doctrine and truth. He prefaced his message with quotations from Daniel 12, and particularly emphasized the words, "Many shall be purified". Pointing out that there can be no apostacy unless the line be clearly drawn, he averred that if we are God's holy people we have everything to our advantage since "holiness is constitutional"—written in the nature of things. The speaker also pointed out that prejudice is not a liability but our capital stock, and that our defense is only really found in an aggressive evangelism that will continually produce new life and consequent spirituality.

The minutes of the previous session were by motion approved as read.

The reading of general conference legislation was concluded by the secretary.

The list of ordinands as recommended by the examining board and the District Council were read as follows: Bobbie Bidwell, Robert C. Seelig and David W. Shafer.

By motion carried the conference approved of the final ordination of these three young men to the ministry.

The recommendations of the Examining Board and the District Council for district license and the first ordination were as follows: David Wooten, George File, Walter Dill, Wayne Musgrove, and William Thurston.

A motion carried that these licentiates be accepted.

Reverend Melvin Dieter, Secretary of the Examining Board, reported on renewals of district license and by motion carried, these recommendations were accepted.

Since a question was raised concerning the election of the district superintendent for a one or two year term of office and whether or not the General Conference action dealing with this matter could be retroactive, a motion carried that we have a secret ballot concerning the matter.

By motion the conference decided to recess for ten minutes and to reconvene for the order of the day—the annual ordination service.

The ordination service opened with the singing of "A Charge to Keep I Have." Brothers Castevens, Bubb, and Gunsalus read scripture lessons found in I Timothy 3:1-7, II Tim. 4:1-8, and Titus 3:1-11. Prayer was offered by Brother Campbell.

The charge was delivered by Assistant General Superintendent Snyder, based on the words in II Timothy 2:10, "Therefore I endure all things for the elect's sake . . ." He pointed out that Timothy needed the courage, fortitude and strength of the Holy Spirit in order to be a blessing to others, and that the minister of the Gospel must suffer if he is going to prove a blessing. It was further asserted that if the minister is to be used of God he must study the mind of the Spirit. It is not enough to preach sound doctrine, but one must have the presence and power of God to move men. However, like the Apostle Paul, the true preacher must see God in everything and particularly in his sufferings.

The Ordination Council knelt and by the laying on of hands ordained the three candidates to the Gospel ministry. The presence of the Holy Paraclete—the one called to stand alongside—was very real as the conference greeted and congratulated the newly ordained.

The session was adjourned with the close of the ordination service.

### FIFTH SESSION JUNE 29, 1954—2:05 P. M.

The fifth session of Conference convened with the singing of "Constantly Abiding." Prayer requests were made for afflicted members and friends of the assemblage after which Reverend Walter F. Bubb led in prayer.

Mr. Carl Kresge, president of the Eastern Pilgrim College Laymen's Fellowship, was presented to the Conference by the Reception Committee. He spoke briefly but earnestly on the benefits of the Laymen's organization.

The minutes of the previous session were approved by motion as read.

A motion carried to make Resolution Number 17, page 30, **The Conference Journal** (1952) a standing rule.

By motion it was decided to hear from the Resolutions Committee.

Resolution Number X was carried by motion.

It was moved, seconded, and carried to adopt Resolution Number XI.

Resolution Number XII calling for a Zone Directory of Churches was passed unanimously.

Charles H. Sorrells, whose name was inadvertently omitted from the list of licentiates for renewal of district license was granted first ordination by motion.

Memoirs Committee Secretary, Reverend Fred Newton read the **In Memoriam**.

A motion carried that the names of any other laymen possibly omitted from the **In Memoriam** list could be added later.

The report of the Memoirs Committee was accepted by motion.

A vote was then taken on whether or not the superintendent should be elected for two years. 115 ballots were cast, 90 voting yes and 25 no.

A ballot was then taken for the office of District Superintendent, re-electing Reverend G. A. Castevens with 102 out of 114 votes. A fine speech of acceptance was made by the Superintendent.

The first ballot for Assistant District Superintendent resulted in no election. A second ballot produced the election of Reverend Walter F. Bubb with 84 out of 115 votes.

Council nominations for District Secretary were read as follows: Howard J. Frey, Walter F. Bubb, Harold R. Crosser. Reverend Harold R. Crosser was elected on the first ballot with 112 of 116 votes.

The following names were read as Council nominations for District Treasurer: John P. Campbell, Edward T. Houston, E. E. Hostetter, Edgar J. Haskins. Reverend John P. Campbell was elected on the first ballot with 79 of 117 votes.

A ballot cast for the first Advisory Councilman resulted in no election. A motion carried to vote on one of the three highest, R. D. Gunsalus, Edward T. Houston, and Raymond Hoffman. The second ballot produced no election. It was decided by motion to narrow the vote to the two highest, Edward T. Houston and R. D. Gunsalus. Reverend Edward T. Houston was elected with 67 of 116 ballots.

By motion it was decided that four names be placed on the next ballot for advisory council members.

The Conference proceeded with business while the tellers counted the votes.

The roll of churches was called for Conference Journal orders.

Brother Campbell spoke to the Conference about matters that concerned the office of the District Treasurer.

The previous ballot, with four names for advisory council members, resulted in the election of Reverends R. D. Gunsalus with 79 votes and Raymond Hoffman with 60 votes.

A motion carried to vote for two of the four highest remaining names which were Oliver G. Holden, Lodge W. Chappell, Howard J. Frey, and E. E. Hostetter.

A ballot was cast for the last two advisory council members.

The session was adjourned by expiration of time after it was decided to reconvene at 6:30 p. m.

### **SIXTH SESSION JUNE 29, 1954—6:30 P. M.**

The sixth session of conference convened with Reverend Melvin Snyder presiding. The song "O Happy Day" was sung. Harold R. Crosser led in prayer.

A motion was made, seconded, and carried that the minutes of the previous session as well as this be approved by the District Council.

The report of the ballot for the last two advisory members of the District Council showed Reverends Oliver G. Holden and Lodge W. Chappell elected with 69 and 64 votes, respectively.

Nominations for the Examining Board were read by the Secretary: Edward Crosser, Edgar J. Haskins, Elmer J. Hocking. The first ballot resulted in no election. By motion it was decided to vote on the two highest, Edward Crosser and Edgar J. Haskins, with the result that Edward Crosser was elected.

Albert Massey, Edgar J. Haskins, and D. I. McCracken were presented as Council nominees for the vacancy on the Home Missionary Board. Edgar Haskins was elected on the first ballot with 54 of 103 votes.

A motion from the Resolutions Committee, duly seconded and carried, called upon District Superintendent Castevens to express appreciation to all who had helped to make the Conference a success.

Reverend G. A. Castevens complimented the dining room corps on the excellent service rendered, the administration of Eastern Pilgrim College for their generous hospitality, and the Council and Committees on the fine manner in which they expedited business. He then called for a vote of thanks to Reverend Melvin Snyder, Second Assistant General Superin-



tendent, who had so graciously and wisely counseled and presided over the gathering.

Brother Snyder not only responded with words of kind regard but called upon the conference to give a standing vote of appreciation and a pledge of cooperation to District Superintendent Castevens and President Gunsalus of Eastern Pilgrim College.

The session was adjourned by motion and feeling prayer.

(The minutes of the last two sessions were approved by the District Council.)

Signed by the Secretary, HAROLD R. CROSSER

## CONFERENCE REPORTS

### REPORT OF THE DISTRICT SUPERINTENDENT

To the Pennsylvania-New Jersey Conference of the Pilgrim Holiness Church, convened at Eastern Pilgrim College, Allentown, Pennsylvania, Greetings! First, to our newly elected Second Assistant General Superintendent, Rev. Melvin Snyder, and all of you who make up this forty-first Annual Conference.

Since it is customary for the District Superintendent to give a report to the Conference of his labors and activities, I am very happy to do so. On my part, this has been a year of getting acquainted and surveying the field. Both ministers and laymen have given me a very cordial reception, for which I am deeply grateful. Let me take this opportunity to say, "Thank You", and particular thanks to the noble minister's wives for the clean and comfortable beds and wholesome meals provided on my visits.

This Conference year did not pass without the invasion of death among our ministers. On November 6, 1953, Rev. William R. Munson was stricken while on a preaching engagement at Lebanon, Pennsylvania. Within about two hours after being stricken, life's brittle thread was broken and he went to be with his Lord. Brother Munson labored for many years in this Conference in the interest of God's work. We have missed his prayers and praises greatly during this Camp and Conference. At his home-going he was pastor of the Harrisburg Church.

What has been attempted and accomplished in the departments of Home Missions, Sunday Schools, and Youth Work will be reported by the respective secretaries of these departments. However, I wish to express my personal thanks to those who have been leaders of these departments for their untiring efforts and endeavors to promote the work of Christ and the Church. To further inform you, a church could have been organized at Levittown, Pennsylvania, where Rev. William B. Derr has labored faithfully as your missionary, but after much consideration we thought it best to wait a few more weeks so that we might organize with more than nine charter members.

There have been heartening indications of an awakening among the Churches. God has been pleased to visit a number of our Churches with outstanding revivals such as were known in the yester-years. In some places a continuous revival spirit continues to prevail. Those who have been backsliders for many years have returned to the Lord. God grant that this desire for a revival will so grip every preacher and layman, that we will not only intercede in mighty prayer, but be stirred to go forth and seek out the lost ones and point them to Jesus.

Material advancements have been made in many of the Churches. Included in these are additions, alterations, redecorations, and equipment. Most of these accomplishments have been reported through "The Pilgrim Action", so I shall not enumerate them again.

The Conference giving for General interest was the largest in the history of the District. A total of \$33,517.98 was sent to the General Church Treasurer to promote the General work of the Church. This is an increase of \$4,536.85 over last Conference year. For this we praise the Lord.

Our College, now known as Eastern Pilgrim College, has enjoyed one of the best years in its history. God was pleased to give the largest student body of any previous years. An accreditation status was reached during the past year which will enhance the College greatly. The College is blessed with a godly and well-trained faculty. It has pleased the Lord to repeatedly visit the College with spiritual outpourings during the year. Let us all join in prayer for the continued blessings of God upon the College, and also promote the Building and Expansion Program throughout the Conference. In going over the annual report of our District Treasurer, I was pleased to note an increase in giving in our Conference for the College.

With reference to membership of the Conference, I regret that my tabulation of the annual reports shows a loss over last year, unless the Statistician's Report should reveal otherwise. In a supplemental report which I have prepared for the Conference, there will be revealed some sobering facts on this particular matter over the past eight years.

In all fairness to the churches and pastors making a gain in Church Membership, there were about fifteen. The Delaware Run Church was the leader in this respect, having taken in 15 members—Rev. Robert F. Finch is pastor of this Church. The Lock Haven Church was the next highest, having received 13 into membership—the pastor is Rev. Walter F. Bubb.

My personal report is as follows:

I have preached 221 times; made 113 visits to the churches; conducted 104 Church Board meetings; conducted 18 annual meetings; have held 7 District Council meetings; and 7 other Committee meetings. I have attended 3 Young Peoples' Rallies; held 8 week-end meetings; and conducted 4 dedicatory services. I have attended 2 College Board meetings; burned the mortgage of 1 parsonage; have conducted 5 communion services; attended one Bald Eagle Camp Board meeting; dedicated 2 children; and secured 15 subscriptions to the Pilgrim Holiness Advocate. Attended the Church Leaders Conference in January at our Church Headquarters in Indianapolis, Indiana. Also presided at the Ministerial Convention and Camp Meeting. I have traveled approximately 22,000 miles in the interests of God's work.

I have received my salary in full from the District which is \$3,840.00. The church offerings toward my traveling expenses have amounted to \$1,083.61. Love offerings from week-end meetings \$124.23. Revival offerings \$350.00. I have enjoyed laboring with you in the promotion of God's work in our great District.

Your loyal cooperation has made the load much lighter than it would have been otherwise. With unflinching faith in God, we face the future and trust for greater achievements and accomplishments.

Respectfully submitted,

G. A. CASTEVENS District Superintendent

# REPORT OF THE AUDITING COMMITTEE

The auditing committee has examined the books of the District Treasurer and found them to be correct.

Auditing Committee:

GEORGE E. CULVER

CLIFFORD BERRY

F. W. GREENLEY

## DISTRICT TREASURER'S REPORT

May 18, 1953 to May 15, 1954

### General Church Funds

#### General Budget

Receipts for the year-----	\$ 8,438.94	\$	\$
Paid to E. V. Halt, Gen. Treas. ---		8,438.94	

#### Foreign Missions and Self Denial

Receipts for the year -----	9,661.74	
Paid to E. V. Halt, Gen. Treas. ---		9,661.74

#### Foreign Missions Specified

Receipts for the year -----	9,900.50	
Paid to E. V. Halt, Gen. Treas. ---		9,900.50

#### General Church Administration

Receipts for the year -----	47.00	
Paid to E. V. Halt, Gen. Treas. ---		47.00

#### Church Extension and Easter Offering

Receipts for the year-----	3,155.44	
Paid to E. V. Halt, Gen. Treas. ---		3,155.44

#### Pilgrim Pension Plan 2%

Receipts for the year-----	664.77	
Paid to E. V. Halt, Treas. -----		664.77

#### Pilgrim Pension Plan 4%

Receipts for the year-----	1,145.38	
Paid to E. V. Halt, Treas. -----		1,145.38

#### Sunday School Rally

Receipts for the year-----	504.21	
Paid to E. V. Halt, Gen. Treas. ---		504.21

TOTAL RECEIVED -----\$33,517.98

TOTAL PAID OUT ----- \$33,517.98

Paid Foreign Missions including Gen. Budget portion-----\$22,600.27

### District Funds

#### Ministerial Tithe 50%

Balance May 18, 1953-----	\$ .00	\$	\$
---------------------------	--------	----	----

Receipts for the year-----	6,638.82	
----------------------------	----------	--

Total for the year----- 6,638.82

#### Expenditures for the year

Dist. Supt. Salary -----	3,840.00
--------------------------	----------

Pension Plan -----	114.00
--------------------	--------

Parsonage Utilities -----	39.38
---------------------------	-------

Transfers to other funds-----	2,600.00
-------------------------------	----------

Grand Total ----- 6,593.38

Balance May 15, 1954-----		45.44
---------------------------	--	-------

**Retirement and Emergency Fund**

Balance May 18, 1953	1,682.58	
Receipts for the year	230.03	
Grand Total	1,912.61	
Expenditures		
J. Franklin Lint	400.00	
Moving Dist. Supt.	231.78	
Floral tributes and love offerings	86.21	
Grand Total		717.94
Balance May 15, 1954		1,194.67

**District Expense 7%**

Balance May 18, 1953	111.94	
Receipts for the year	4,306.24	
Grand Total	4,418.18	
Expenditures		
Camp Meeting	1,601.37	
District Minutes	462.05	
Taxes and Insurance	153.56	
Council Meetings	269.38	
Dist. Supts. Conference	60.00	
Parsonage Utilities	335.21	
Treasurer's Salary	150.00	
Secretary's Salary	50.00	
S. S. Secretary's Salary	25.00	
Statistician's Salary	25.00	
Gen. Conference Sinking Fund	175.26	
Miscellaneous	1,065.25	
Grand Total		4,372.08
Balance May 15, 1954		46.10

**Home Missions 7%**

Balance May 18, 1953	2,594.63	
Receipts for the year		
Offerings	2,480.38	
Transfer 50% Tithe	600.00	
Grand Total	5,675.01	
Expenditures		
Transfer to Loan Fund	254.95	
Promotion of Home Missions	4,747.12	
Grand Total		5,002.07
Balance May 15, 1954		672.94

**Home Missions Special**

Balance May 18, 1953	3,011.84	
Receipts for the year		
Offerings	1,672.19	
Loans	7,000.00	
Transfer 50% Tithe	960.00	
Grand Total	12,644.03	
Expenditures		11,282.53
Balance May 15, 1954		1,361.50

**Eastern Pilgrim College 7%**

Receipts for the year	4,044.95	
-----------------------	----------	--

Paid E. P. C. ....		4,044.95	
<b>Eastern Pilgrim College @ 25c</b>			
Receipts for the year .....	3,154.48		
Paid E. P. C. ....		3,154.48	
<b>District Loan Fund</b>			
Balance May 18, 1953.....	1,962.36		
Receipts for the year .....			
Payments on Loans .....	288.65		
Transfer H. M. 7%.....	254.95		
Grand Total .....	2,505.96		
Balance May 15, 1954 .....			2,505.96
<b>District Parsonage Fund</b>			
Balance May 18, 1953.....	296.23		
Transfer from 50% Tithe.....	1,040.00		
Grand Total .....	1,336.23		
Paid on Parsonage .....		890.00	
Balance May 15, 1954 .....			446.23
<b>General Conference Fund</b>			
Balance May 18, 1953.....	848.79		
Transfer from Expense 7%.....	175.26		
Grand Total .....	1,024.05		
Balance May 15, 1954 .....			1,024.05
<b>Sunday School and Young People</b>			
Balance May 18, 1953.....	99.11		
Receipts for the year .....	313.46		
Grand Total .....	412.57		
Expenditures .....		316.73	
Balance May 15, 1954 .....			95.84

### Recapitulation

#### All District Home Mission Funds

Grand Total of Receipts .....	18,319.04		
Expenditures			
Levittown Property .....	11,272.00		
Promotion at Levittown .....	2,144.69		
Promotion at Gloucester City.....	300.00		
Promotion at E. Bangor.....	58.00		
Promotion at Jamesburg .....	45.33		
Promotion at Pen Argyl .....	621.21		
Promotion at Lebanon .....	55.00		
Promotion at York .....	25.00		
Payments on Loans .....	955.50		
Trailer Expenses .....	303.02		
Pilgrim Action .....	101.00		
Miscellaneous .....	403.85		
Grand Total .....		16,284.60	
Balance May 15, 1954.....			2,034.44

#### All District Funds

Total Balance May 18, 1953.....	\$10,607.48	\$	
Receipts for the year .....	33,159.41		
Grand Total .....	43,766.89		

Total Expenditures .....	\$ 36,374.16	
Balance May 15, 1954 .....		\$ 7,392.73
Less surplus loan on parsonage .....		2,000.00
Bank balance May 15, 1954 .....		5,392.73
<b>All Funds Combined</b>		
Total balance May 18, 1953 .....	\$10,607.48	
District receipts for the year .....	33,159.41	
General receipts for the year .....	33,517.98	
Grand Total .....	77,284.87	
<b>Expenditures</b>		
District Interests .....	36,374.16	
General Interests .....	33,517.98	
Grand Total .....	69,892.14	
Balance May 15, 1954 .....		7,392.73

Respectfully submitted,

JOHN P. CAMPBELL

Penna. & New Jersey District Treasurer

### HOME MISSIONARY COMMITTEE REPORT

The Home Missionary Department is glad to report that God has smiled on some efforts put forth in this field. It was the aim of the committee to concentrate most of their efforts. This was rewarded with a good response from the work at Levittown. In ten months that the pastor was on the charge splendid progress has been achieved. Within this time 1965 contacts and calls were made with some good results. The average Sunday School attendance is 29. The average prayer meeting attendance is 10. Beside the help from the District which amounted to \$1,740.00 the church raised a total of \$1,322.29 during this ten month period. The total amount by the District for the promotion at Levittown for the year amounted to \$2,144.69. The work has grown to be large enough to effect a church organization but by expediency seemed wise to have the organization at a later date when the membership is larger.

Some assistance has been given to the West Pen Argyl work to the amount of \$621.00. The progress there is fair. We are hoping to secure the property in which they worship and are aiming to organize the people into a church.

Financial help to the amount of \$25 per month on the parsonage has been given to the Gloucester Church. We are glad to report that progress is made and that the work is encouraging.

Financial aid to the amount of \$99.00 on the furnace has been given to the Lebanon Church. With the new Conference year we trust to see some advancement made. Aid to the amount of \$25.00 was given to the York Church for the moving of the Pastor.

Help has been given to the Jamesburg Church to the amount of \$180.34 which the church greatly appreciated. It was a matter that was very encouraging at a time when help counted most.

There are some prospects for new work in South Jersey. There are two independent groups who are looking our way and they seem prospects for the future.

The gains were not spectacular but we do thank the Lord that He has smiled upon us and has given a noticeable measure of success.

Respectfully submitted,  
E. E. HOSTETTER  
Secretary of the Committee

## REPORT OF THE PROMOTIONAL SECRETARY OF SUNDAY SCHOOLS

To the Forty-first Annual Conference of the Pennsylvania-New Jersey District of the Pilgrim Holiness Church.

Sunday School Greetings!

It is with a sense of holy privilege and responsibility that I present this report of the district Sunday School efforts for the past conference year. The Sunday School and its growth is not an end in itself but a means to an end. This signifies that the mere counting of scholars or rejoicing over statistical gains can never be the ultimate good of the Sunday School effort. The Sunday School should and must be the SEEDBED OF REVIVAL — a mighty, aggressive, prospering auxiliary, feeding the church and enlarging her borders.

I should say that I accepted the responsibilities of Sunday School Promotional Secretary this past year with a bit of reluctance. I felt that a new touch should be given to the promotional effort and that the lack of equipment and intervening distance from our district headquarters were heavy handicaps, since the promotional secretary does not have facilities for mimeographing the monthly reports but has to depend on the office of Eastern Pilgrim College or commercial mimeographing services. Because of this condition, work that ordinarily would have taken little effort consumed many hours and often delayed your reports.

The backbone of the Sunday School effort among us, as in any other group, is the loyal corps of pastors, Sunday School superintendents, officers, and teachers. I wish to highly commend this wonderful group of faithful men and women who have made Sunday School progress in the Pennsylvania-New Jersey District not only a vision but a glorious reality. They have made our Sunday Schools! They will mold and make our Sunday Schools always! God bless everyone of them! I have only served as the reporter and coordinator of what they have accomplished.

God has given us another year of growth—the fifth in succession. The average attendance of 1952-153 was 3,718, with every Sunday School reporting. The average attendance this year is 3,780 or a gain of 62. This is not a large gain. The point of rejoicing stems from the fact that we have had another year of growth.

Our gains have never been phenomenal, but piled up year after year they become quite formidable. Five steady years of growth have increased the average attendance in this district from 2,820 to 3,780. Before long we ought to be topping the 4,000 mark. It seems to me that another year should bring this to pass. This could be accomplished by each of our schools gaining 4—just an increase of 4 in average attendance. Let's try it! Let's do it!

It was gratifying at the General Conference to have the General Secretary of Sunday Schools announce that the Pennsylvania-New Jersey District had the largest percentage gain in Sunday School attendance during the past quadrennium. Hats off to the past—coats off to the future!

This year twelve of our schools were blue ribbon organizations—or were ten percenters: Armstrong Valley, Augustaville, Bush Hollow, Gloucester, Jamesburg, Lock Haven, Muncy, North Rome, Pine Grove, Pocono Lake, Salem, and Woodbury. The highest percentage increases were as follows: Lock Haven 43%, Salem 42%, Gloucester 31%, Pocono Lake and Woodbury 24%, Muncy 23%, and North Rome 22%. The numerical leaders were Lock Haven—43 which by far was the largest, Muncy and Salem 15, Pocono Lake 14, Augustaville 12, and Bush Hollow and Woodbury 11.

Under God let me admonish you to greater exploits for God in behalf of the Sunday School effort. Remember! THE SUNDAY SCHOOL IS THE SEEDBED OF REVIVAL.

Respectfully submitted,  
HAROLD R. CROSSER

### PENNSYLVANIA - NEW JERSEY DISTRICT PILGRIM YOUTH REPORT

Pilgrim Youth greetings to the Forty-first Annual Conference of the Pennsylvania-New Jersey District of the Pilgrim Holiness Church.

The success of the youth work in our District for the year can only be attributed to the excellent efforts of our zone leaders, pastors and laymen. The Lord has blessed us in giving a gain of 220 over that of the year previous. This means that 220 more people are interested in the youth of our Church and their activities. The re-zoning of the District Youth Work has spurred on new interest in several zones.

At the request of the District Council I have visited a rally in each of the seven zones. In these rallies it has been my pleasure to promote more organized and chartered societies, as well as create interest in our Pilgrim Youth News and Spiritual Life Outlines publications.

Rallies were held in the various zones during Pilgrim Youth Week, in which our young people were given opportunity for expression. Also many of our local churches sponsored special youth services which have proven a great blessing.

The response and cooperation of the zone leaders, pastors and laymen has been greatly appreciated. It has been a real delight to labor with the brethren.

The Youth Work of our District is yet in its infancy. Penn-Jersey Pilgrim Youth will mature as we are led by the Great Hand of the Conquering Christ.

The statistical report is as follows:

Zone	Rallies	Offerings	Ave. Att.
South Eastern -----	3	\$ 48.25	132
North Eastern -----	3	67.85	212
North Central -----	4	128.33	211
South Central -----	3	62.04	151
Central -----	4	62.88	156
Western -----	4	66.89	168
New Jersey -----	6	71.00	143
District rallies—2			
Balance brought forward -----			\$287.91
Total receipts -----			507.24
			<hr/> \$795.15



Total disbursements—zone meetings -----	\$286.67
Funds forwarded to District Treasurer-----	271.35

Total disbursements -----	\$558.02
Balance on hand -----	\$103.26

I have traveled 716 miles to rallies, was paid \$38.70 toward traveling expenses. Tried to preach at two rallies, received \$24.60 for same.

Respectfully submitted,  
HOWARD J. FREY

## REPORT OF THE RESOLUTIONS COMMITTEE

### Resolution Number I

INASMUCH as the District Camp Meeting under the present circumstances is not meeting the need of the district and is not serving its original purpose of spearheading an aggressive program of evangelism because of poor attendance, and this poor response seems to affect the whole program of the district,

BE IT THEREFORE RESOLVED that the district camp meeting be moved from the campus of Eastern Pilgrim College to the Camp Ground of the Sunbury Camp Meeting Association, pending a satisfactory decision on the part of the Board of Directors of the above named association.

AND BE IT FURTHER RESOLVED that the District Council, through the District Superintendent, shall call a meeting of consultation, within three months, of the pastors within a 50 mile radius of Allentown with the purpose of clarifying the local situation with the end of establishing a Zone Camp Meeting. (As amended by Conference)

### Resolution Number II

BE IT RESOLVED that the District Council take care of details such as the time of the encampment and other arrangements involved in moving the district camp meeting from Allentown to Sunbury.

### Resolution Number III

WHEREAS the District Camp is a part of our district work,

BE IT RESOLVED that the District Treasurer's report include a detailed financial report of our district camp.

### Resolution Number IV

INASMUCH as there is no special merit in the District Conference following immediately after the District Camp Meeting, and

INASMUCH as Allentown is considered the District Headquarters,

THEREFORE BE IT RESOLVED that the Conference and Camp Meeting be separated and that the District Conference convene in the auditorium of the Eastern Pilgrim College at 2 p. m. Tuesday afternoon following the commencement and that Tuesday morning 9 a. m. be designated for the meeting of committees.

### Resolution Number V

INASMUCH as the Ministerial Convention is held for the ministers of the Pennsylvania-New Jersey District and, although a separate organiz-

ation from the District Conference, is an integral part of the work of the District, therefore,

BE IT RESOLVED that the Ministerial Convention Committee of which the District Superintendent is chairman by virtue of his office, be listed annually in the official Minutes of the district along with all other conference and district committees.

### **Resolution Number VI**

BE IT RESOLVED that the District Superintendent be provided with an official directory file with sufficient cards to carry the official family of each church and that the pastors be instructed to get this data to the superintendent immediately after the annual church meeting. (Substitution by the Conference)

### **Resolution Number VII**

WHEREAS there is a manifest desire to see the work of our district move forward, and

WHEREAS there is, according to the District Superintendent's report, a definite need for improvement in Sunday School attendance and church membership,

BE IT RESOLVED that this Conference set an average attendance goal for this conference year of 4,000 Sunday School scholars and that we also set a goal to increase church membership to 2,000.

### **Resolution Number VIII**

BE IT RESOLVED that we delete resolution number 4, page 35 of the 1953 Conference Journal and substitute the following resolution:

BE IT RESOLVED that the District Superintendent be permitted to conduct only two revivals a year outside of the bounds of the conference. (As amended by Conference)

### **Resolution Number IX**

INASMUCH as it is fitting that we pay honor and respect to the memory of the departed,

BE IT RESOLVED that a picture and brief sketch of labors of departed ministerial members be placed in the Conference Journal.

This is to become a standing rule.

### **Resolution Number X**

INASMUCH as plans are continually being laid for the expansion of our work both through the home missionary efforts and on the local church level, and since difficulties are encountered in procuring necessary loans to implement such expansion,

BE IT THEREFORE RESOLVED that the District Council be authorized to work with any local church in procuring such loans using the financial standing of the Conference, as reflected in the property statement and the District Treasurer's balance sheet, as the basis of negotiation for such loans.

**Resolution Number XI**

BE IT RESOLVED that standing rule number 5 on page 35 be amended to read:

The District Superintendent with council consultation shall appoint all committees.

**Resolution Number XII**

BE IT RESOLVED that we include in our Conference Journal in place of the zone directory of churches on page 4, a directory of all churches of the Conference with specific addresses.

Secretary of the Resolutions Committee  
PAUL BRAISTED

**REPORT OF THE WAYS AND MEANS COMMITTEE****Ways and Means Number I**

WHEREAS, 7% was insufficient for the General Conference expense fund,

BE IT RESOLVED, That Ways and Means Number 6, page 37, be made to read that we deduct 10% from the District Expense Fund for this purpose.

**Ways and Means Number II**

WHEREAS, There is a financial inconvenience placed upon Young People's Zone Leaders having insufficient funds to engage a speaker and for advertising purposes,

BE IT RESOLVED, That each Youth Zone Leader be permitted to retain a working balance of \$35.00 throughout the conference year and that said balance be forwarded to his successor.

**Ways and Means Number III**

BE IT RESOLVED, That Ways and Means Resolution Number 2, page 37, be amended as follows: That we pay our District Superintendent a salary of \$4,000.00 per year, and that each pastor shall raise an offering upon the visit of the superintendent for his expenses and that the telephone, postage, and telegrams shall also be paid from the District Treasury. The District shall also provide the superintendent's utilities and fuels. (As amended by Conference).

**Ways and Means Number IV**

A substitute resolution for No. 7, page 37.

RESOLVED, That each church provide the District Conference with no less than \$3.00 each for the pastor and delegate, or delegates, who attend the District Conference, and that all other members of the District Conference be required to pay \$3.00.

Secretary of the Ways and Means Committee  
RUSSELL L. LUTZ

STATISTICAL

STATISTICAL  
AND  
FINANCIAL

Church	CHURCH								
	Members Last Year	Transferred By Letter	Deaths	Dismissed	Total Removed	By Profession of Faith	By Letter	Total Additions	Present Membership
Allentown	66	5	1	3	9	8		8	65
Allenwood	31		1	2	3	8		8	36
Armstrong Valley	20		1		1		2	2	21
Ashland	24		1		1				23
Augustaville	36		1		1	4		4	39
Beech Creek	33	1	1		2				31
Bethlehem	98	2		3	5	1	9	10	103
Bridgeton	15			2	2				13
Bush Hollow	29		1		1				28
Cherryville	59					5		5	64
Coleville	44		2		2	1		1	43
Delaware Run	48			5	5	4	3	7	50
East Bangor	16			9	9				7
Erma, N. J.	22			1	1		1	1	22
Frackville	22								22
Glassboro	65	3	1		4	7		7	68
Glen Iron	22								22
Gloucester City	9						5	5	14
Harrisburg	23		1	1	2	1	1	2	23
Highland	20			1	1				19
Hyde	36								36
Jamesburg	25			5	5	2	2	4	24
Jersey Shore	21			1	1	2	2	4	24
Lebanon	15	3			3				12
Levittown									
Linden Hall	10								10
Lock Haven	84	2	1	3	6	13		13	91
Loganton	30								30
Middleburg	31								31
Millersburg	51			4	4	3	2	5	52
Millville	35	3		5	8				27
Milroy	45	10		10	20	1		1	26
Milton	78		6	6	12				66
Mt. Union	20								20
Muir	15			1	1				14
Muncy	19		1	3	4				15
North Rome	36								36
Pine Grove	30	4			4		2	2	28
Pocono Lake	38	1		2	3	4	1	5	40
Port Matilda	7					2		2	9
Reading	68	4	2	2	8	5	1	6	66
Rockville	34								34
Rebuck	63	2			2	3		3	64
Salem	24			5	5	1		1	20
Shillington	18					1	1	2	20
State College	12			2	2				10
Stonington	38			2	2				36
Stroudsburg	86	1	3		4	1		1	83
Summit Hill	26					2		2	28
Sunbury	58					5	2	7	65
Trenton	22			6	6				16
Turnersville	32			2	2				30
Williamsport	42		1	1	2	1	2	3	43
Woodbury	27		1	3	4				23
York	19			6	6		1	1	14
East Pilgrim. Coll.									
TOTALS	1900	41	26	96	163	85	37	122	1859

E. L. ADAMS  
Statistician

# STATISTICAL

Church	SUNDAY SCHOOL							YOUNG PEOPLE				
	Enrollment Total	Active Members	Cradle Roll	Home Department	Average Attendance	Average Last Year	D. V. B. S. Average	Active Members	Associate Members	Honorary Members	Attendance Average	Aver. Att. Last Year
Allentown .....	139	125	14	10	103	96	70	16	8	43	60	60
Allenwood.....	87	75	12		58	63		20	12	10	32	
Armstrong Valley ..	54				38	32						
Ashland.....	53	53	5		48	50						
Augustaville.....	120	114	6		101	89						
Beech Creek.....	62		10		47	49						
Bethlehem.....	156	145	11		121	114		13	22	4	28	28
Bridgeton.....	68	50			39	41						
Bush Hollow.....	99	97			78	67						
Cherryville.....	157	138	19		118	114	102	31	1	16	50	78
Coleville.....	134				113	119					73	46
Delaware Run.....	120				107	114						
East Bangor.....	49	35			34	38						
Erma, N. J.....	55	50			39	39						
Frackville.....	44	44			41	42		10			14	13
Glassboro.....	129				117	107					75	75
Glen Iron.....	67				50	49						
Gloucester City.....	32	32			21	16	16					
Harrisburg.....	100		5		66	69	10	8	7	25	20	
Highland.....	56	50	6		35	41						
Hyde.....					101	95		12			44	48
Jamesburg.....	70	70	5		63	53		15	6	8	33	30
Jersey Shore.....	90	75	13		68	82						
Lebanon.....	43				24	31						
Levittown.....					26		13					
Linden Hall.....					14							
Lock Haven.....	159				142	99						
Loganton.....	70	57			57	53						
Middleburg.....	58				42	39						
Millersburg.....	119	108	11		82	86						
Millville.....	83		15		68	79	30					
Milroy.....	44				42	66						
Milton.....	172	167	5		130	126						
Mt. Union.....	99				74	79						
Muir.....	45				32	35					25	25
Muncy.....	121	92	19		81	66	42	3	4	9		
North Rome.....	92	92			55	45						
Pine Grove.....	51				39	34					25	25
Pocono Lake.....	79		18		73	59		21			38	35
Port Matilda.....	26				14	17						
Reading.....	118	108	4	6	86	94	22				30	24
Rockville.....	125	115	15		80	83						
Rebuck.....	107	107	6		93	96						
Salem.....	55				51	36						
Shillington.....					32	34						
State College.....	32				24	20						
Stonington.....	111				88	93						
Stroudsburg.....	247	223	24		201	212	114	14	8	1	23	27
Summit Hill.....	41				39	40						
Sunbury.....	160	145	15		110	104	32	20	5	13	25	14
Trenton.....					24	25						
Turnerville.....	61				54	61		12	5		14	15
Williamsport.....	108	102	7	6	83	79	133					
Woodbury.....	69	56			56	45		15			12	10
York.....	48		9		35	36						
East'n Pilgrim Coll.					126	143						
TOTALS.....	4484	2525	254	22	3780	3718	584	210	78	129	621	551

## STATISTICAL

Church	SERVICES											
	Preaching by Pastor	Preaching by Others	Church Prayer Services	Cottage Prayer Services	Bible Studies	Sunday School Sessions	Youth Services	Other Services	Total Number Services	Seekers Regeneration	Seekers Sanctification	Revids
Allentown.....	98	33	52			52	24		259	9	5	2
Allenwood.....	101	18	48			52	49		268	26	7	1
Armstrong Valley.....	90	12	27	23	4				156		12	2
Ashland.....	71	19	43	2		52		19	206	11	2	1
Augustaville.....	84	36	53			50		55	278	23	9	2
Beech Creek.....	101	10	43	40		47			241	37	13	1
Bethlehem.....	67	24	47			52		3	194	26		2
Bridgeton.....	89	21	52			52		12	174	4	4	2
Bush Hollow.....	90	30	30	16		52			218	15	18	2
Cherryville.....	63	53	46	12		52	50	24	300	12	19	4
Coleville.....	83	33	48	48		52	50	2				1
Delaware Run.....	84	20	49	45		52	25	5	278			2
East Bangor.....						52			52			
Erma, N. J.....	86		6	51		52			195	10	2	2
Frackville.....	99	45	49			52	15	19	279			
Glassboro.....	86	18	44	4		52	44	10	258			1
Glen Iron.....	80	22	25	6		50		30	213	15	6	3
Gloucester City.....	94	37	50		37	52	10	1	282	18	1	2
Harrisburg.....	68	43	36			41	48	12	258			2
Highland.....	78	31	39			51		2	201			2
Hyde.....	88	40	46	48		52	25	24	323			2
Jamesburg.....	125	29	48	14	52	34	29		323	10	4	2
Jersey Shore.....	78	42	49			51	32		252			
Lebanon.....	74	23	41		52	48			238	3		1
Levittown.....	29	27	38			42						2
Linden Hall.....												
Lock Haven.....	68	60	45	8		50	11	29	271	35	20	2
Loganton.....	78	18	41	1		52		5				2
Middleburg.....	94	30	42			50	19	2	321	5	2	1
Millersburg.....	95	45	46			52	25	41	304			
Millville.....	84	29	50			52				22		2
Milroy.....	85	30	43	33		49	22	14	276	14	3	2
Milton.....	96	32	42			50	46	13	279			2
Mt. Union.....	97	30	48	7		52	52	3	289	8	1	2
Muir.....	104	36	32	20	6	52	50	44	344			1
Muncy.....	77	32	52		6	52	30		254	4		
North Rome.....	90	30	40	16	20	50	40	4	290	66	5	2
Pine Grove.....	79	46	29			51	33	4	222			2
Pocono Lake.....	90	44	53			51	30		268	28	10	2
Port Matilda.....	38	25	48			50		3	164			1
Reading.....	75	57	45	48		52	39		316	23	12	2
Rockville.....	80	30	40			52	16		218			2
Rebuck.....	80	16	10		40	47	45	25	243	44	5	2
Salem.....	95	7	52			47				7	3	1
Shillington.....	90	30	50	10				2	262	20	10	2
State College.....	49	4	54	2		49		1	171			1
Stonington.....	100	22	57			63		5	247			1
Stroudsburg.....	80	44	40	16		51	38	50	319	8	8	2
Summit Hill.....	31	20	40	21		52			164			3
Sunbury.....	76	10	30	10		50	22	38	236	29	14	2
Trenton.....	80	26	52			52	30		238			1
Turnerville.....	36	31	36			51	25	7	186	8	6	2
Williamsport.....	75	23	43		10	52	20	8	231	3	0	1
Woodbury.....	92	24	44			52			266	13	1	2
York.....	67	54	48	10		51		1	231	18	11	2
East'n Pilgrim Coll.....												
TOTALS.....	4287			511	227					574	213	88

# RECEIPTS

Church	Balance Forwarded, All Depts.	By Church	By Sunday School	By Youth	By Loans	Total Receipts	Grand Total
Allentown.....	\$ 898.20	\$ 9,497.40	\$ 550.39	\$ 207.35		\$ 10,255.14	\$ 11,153.34
Allenwood.....	303.93	4,002.32	324.89	71.94		4,399.15	4,703.08
Armstrong Valley.....	85.30	1,230.25	240.53			1,470.78	1,556.08
Ashland.....	85.48	2,388.85	582.06			2,970.93	3,056.41
Augustaville.....	807.09	5,843.25	1,060.86	38.92		6,843.03	7,750.12
Beech Creek.....	300.50	3,178.32	129.24			3,307.56	3,617.06
Bethlehem.....	1,242.83	9,266.18	2,763.46			12,390.73	13,633.56
Bridgeton.....	284.41	3,397.43	277.44	666.75		4,341.62	4,626.03
Bush Hollow.....	415.90	5,424.74	354.48	190.76		5,969.98	6,385.88
Cherryville.....	758.54	13,859.16	526.35	310.08	\$20,500.00	35,195.59	35,954.03
Coleville.....	1,134.09	5,395.37	687.88	149.79		6,233.04	7,367.13
Delaware Run.....	257.27	6,832.60	442.72			7,275.32	7,532.58
East Bangor.....		369.82	130.67			500.49	
Erma, N. J.....	81.36	3,098.54	418.63			3,517.17	3,598.53
Frackville.....	6,954.00	1,177.21	366.11			1,543.32	8,497.72
Glassboro.....	614.58	8,110.80	1,358.88	435.70		9,905.38	10,519.96
Glen Iron.....	157.01	2,435.99	390.30			2,983.30	3,140.31
Gloucester City.....	10.28	2,555.85	172.83			2,728.68	2,738.96
Harrisburg.....	123.77	1,263.26	1,693.33	40.94		2,997.93	3,721.30
Highland.....	57.77	1,679.75	232.70		375.00	2,287.45	2,345.22
Hyde.....	991.11	8,169.31	804.95	391.65		9,365.91	10,357.02
Jerseyburg.....	126.28	3,616.03	409.59	239.36	44.03	4,309.01	4,435.29
Jersey Shore.....	68.00	3,844.60	666.89			4,511.49	4,579.49
Lebanon.....		973.65	539.02			1,512.67	1,512.67
Levittown.....	2.59	1,101.45	193.29	28.25	1,740.00	3,062.99	3,065.58
Linden Hall.....							
Lock Haven.....	2,515.69	9,367.69	1,241.72			10,609.41	13,125.10
Loganton.....	42.57	3,272.34	1,102.67	30.00	1,000.00	5,405.01	5,447.58
Middleburg.....	338.77	3,518.68	468.04			3,986.72	4,315.49
Millersburg.....	379.77	5,260.85	3,962.28			9,223.13	9,602.90
Millville.....	101.13	4,514.01	701.87			5,215.88	5,317.01
Milroy.....	1.72	3,631.76	456.90			4,088.66	4,090.30
Milton.....	636.94	7,209.42	736.69			7,946.11	8,585.05
Mt. Union.....	61.06	2,687.42	628.32			3,315.71	3,376.80
Muir.....	54.47	1,433.10	464.85			1,902.95	1,957.42
Muncy.....	269.34	3,880.02	406.17	64.24	1,831.61	6,182.04	6,451.38
North Rome.....	108.93	5,732.86	349.33	157.43		6,239.62	6,348.57
Pine Grove.....	216.22	1,349.35	1,239.69			2,589.04	2,805.26
Pocono Lake.....	283.73	4,353.31	1,346.00	296.73	199.12	6,149.42	6,433.16
Port Matilda.....	136.20	819.83	80.82			1,036.85	1,036.85
Reading.....	383.45	7,348.58	1,564.14	104.21	1,000.00	10,016.93	10,400.78
Rockville.....	209.93	7,356.78	777.72	44.02		8,178.52	8,388.45
Rebuck.....	4,941.12	9,685.66	1,848.99	260.72		11,795.37	16,736.49
Salem.....	155.44	2,949.77	369.82			3,319.59	3,475.03
Shillington.....	537.82	4,662.71	1,611.21		1,800.00	8,073.92	8,611.74
State College.....	70.14	2,372.63	237.81			2,610.54	2,680.68
Stonington.....	703.06	3,642.81	3,239.80		1,000.00	7,882.61	8,585.67
Stroudsburg.....	7,153.92	14,467.70	1,139.69	105.58	5,000.00	20,712.97	27,866.89
Summit Hill.....	119.25	3,642.37	159.45			3,801.82	3,921.07
Sunbury.....	935.71	7,034.91	535.74	68.32		7,638.97	8,574.68
Trenton.....	317.79	3,515.87	324.96	44.77		3,885.60	4,203.39
Turnerville.....	306.45	3,246.98	542.81	180.00		3,969.79	4,276.24
Williamsport.....	148.76	6,990.05	886.63	16.12	393.17	8,255.97	8,434.73
Woodbury.....	303.80	3,965.91	592.78			4,858.69	4,862.49
York.....	605.50	3,121.34	625.66			3,747.60	3,353.10
TOTALS.....	\$37,798.97	\$249,751.84	\$42,960.05	\$4,143.63		\$332,368.13	\$370,111.65

# MINISTERS' REPORTS

Minister	Field	Sermons Preached	Prayer Services	Communion	Other Services	Reverends	Advisory Board Meetings	Sunday School Board Meetings	Pastoral Calls	Seekers for Regeneration	Seekers for Sanctification	Total Seekers	Healing	Baptism	Dedications	Marriages	Funerals	Advocate Subscriptions	Books	Time on Charge	Cash Support	Cash off Charge	Donations	Total Support		
Adams, E. Liden	Millersville	95	47	3			11	2	266								1	20				\$ 3,120.00		\$ 250.00	\$ 3,370.00	
Berry, Clifford D.	Millville, N. J.	84	38	3	2	2	12	2	196	22		22	7	2				14		2		2,600.00		25.00	2,625.00	
Bidwell, Bobbie	Salem, N. J.	95	52	2	1		12		180	7	3	10	17					4	6	1	7	1,660.93		37.25	1,698.18	
Bloom, William C.	Woodbury, N. J.	92	36	6	2	2	6	4	198	13	1	14	3	5			3	4		4		2,236.00		15.00	2,251.00	
Braisted, Paul	Bridgeton, N. J.	89	42	2	16		6	4	200	4	1	5	1		2		1	13		2	8	1,670.00		400.00	2,070.00	
Bubb, Walter F.	Lock Haven	110	32	2	8	1	7		270	15	10	25	23	5	3	1	5	8		9	7	5,150.43			5,150.43	
Bubb, Mrs. Walter F.	Unstationed	14	7			4			100				20		3											
Campbell, John P.	Reading	101	37	3		2	12	5	359	34	13	50	35			2	1	24		2	11	2,600.00	\$ 305.00	380.50	3,285.50	
Castevens, G. A.	Superintendent																									
Chappell, L. W.	Rockville	114	40	4	9	2	12	4	190				25	2			1	3			2	9	3,110.00		25.00	3,135.00
Chatfield, R. W.	Evangelist	324				18						462	20	28	2				9			3,238.00			3,238.00	
Crosser, Edward	York	85	62	2	8	3	13		290	18	11	29	19		1		1	9		9		1,004.00	630.00	172.00	1,806.00	
Crosser, Harold	Augustaville	92	53	2	38	2	12	2	369	23	9	32	5	1		1	1	25	25	1	8	3,380.00	175.00	61.70	3,616.70	
Culp, Raymond	Erma	86	29	3			10	2	200	2		2	16	2			2	11		2	3	1,823.00			1,823.00	
Culver, George E.	Milton	96	42	3	5	2	10	2	589	23	20	43	18	4	3		5	19		3		2,600.00		100.00	2,700.00	
Daniels, Harry J.	Shillington	102	58	4	3	1	6		241	20	10	30	50			2	3	5	12	3		2,650.00		85.00	2,735.00	
Derr, William B. Jr.	Levittown	84	36	1		1			1,965			18	2					19		10		1,905.00		445.00	2,350.00	
Dettmer, Robert C.	Coleville	119	24	2			11	2	235	4	2	6	5		1	4	9	12	9	5	10	2,860.00		13.00	2,873.00	
Dettmer, Mrs. Robert C.	Unstationed	10	5		7				101								1									
Dieter, M. E.	E. Pilgrim College	30			7												1	2				2,620.00			2,620.00	
Duell, George	Frackville	99	51	2	231	1	12	12	466	19	11	30	887	12	24	16	21	2	12	12		449.74	927.30		1,377.09	
Ferguson, Thomas B.	Milroy	85	76	1	14	2	12	3	125	14	3	17	25		1			13	4	14	1	2,153.60		263.68	2,427.23	
Finch, Robert F.	Delaware Run	84	50	3	2	1	11		105	23	5	28	40	10	4			31		8						
Fisher, Herbert W.	Stonington	100	51	3	5	1	12	2	158						2	1				2	9	2,767.64	100.00	150.00	3,017.64	
Flexon, James	Glassboro	86	2	2	4	2	14	6					10	28	6		3	6		1	9	4,326.86	826.33	100.00	5,253.19	
Frantz, Milton E.	East Bangor	88	39	1						8		8				1		10		5		236.48		100.00	330.48	
Frey, Howard J.	Sunbury	126	41	4	41		12	3	201	29	14	43	110	8	2		4	34		2	6	3,120.00	60.00		3,180.00	
Gangaware, John A.	Pocono Lake	108	51	2	10	3	12	1	523	21	9	30		2		3	2	15		3	9	2,613.00	70.00	155.00	2,838.00	
Gatone, V. G.	Allentown	98	48	2		1	12		349	9	6	15	25	12	4	1	5	12	20	4	9	2,805.00	180.00		3,043.00	
Gorman, David	Evangelist																									
Greenley, F. W.	Loganton	80	30	2	18		24		150				6	1	17			20		5	10	2,365.00		100.00	2,465.00	
Greenley, Mrs. Franklin	Unstationed	12	6		2				35	2		2														
Gunsalus, R. D.	E. Pilgrim College	95																	40			3,640.00			3,640.00	
Hain, Homer J.	Armstrong Valley	105	30	2	4	2	6		85		12	48	2	1			1	5	1	12	6	1,140.00	30.00	125.00	1,295.90	
Hain, Marlin	Glen Iron	130	31	2		4	14		142			70	73		1		2	19		1	8	1,665.00	300.00	286.50	2,251.50	
Haskins, Edgar J.	North Rome	97	44	4	2	2	12		483	66	5	71	9		4		2	8		9		2,515.00	120.00	88.05	2,723.05	
Hocking, Elmer J.	Bethlehem	67	28	2	27	2	10	7	216	6		6	3	2	2	1	1	18		8 1/2		2,642.50		35.00	2,677.50	
Hoffman, Harley B.	Middleburg	94	30	3	8		12		212	4	1	5	13				2		7	4		1,860.80	44.00	320.00	2,225.18	
Hoffman, Mrs. Harley B.	Unstationed		1	2	6				47																	
Hoffman, Raymond	Evangelist	82				4			73				15				2	1				735.00			735.00	



Holden, Oliver G.....	Evangelist.....	62	2	2	3	4											3	6	5	4	483.43			483.43	
Hoover, Deborah T.....	Gloucester City.....	165	50	4	88	3	8	380	47	17	64	83		12			7		5	4	1,242.51		40.00	1,282.51	
Hostetter, E. E.....	Mt. Union.....	100	55	1	2	2	12	1	368	10	1	11	9	2		1	2	10	7	3	9	1,924.00	45.00	207.00	2,176.00
Houston, Edward.....	Stroudsburg.....	119	40	5		3	11	4	340	76	18	94	28		3	1	3	38		3	10	3,640.00	310.00		3,950.00
Johnson, J. Lamont.....	Allenwood.....	101	48	4			5	3	662	26	7	33	35	2		2	2	19	12	6	6	2,100.37		100.00	2,200.37
Kratzer, I. E.....	Hyde.....	94	46	3			12	4	285				22		3		3	48		4	9	4,340.47		30.00	4,370.47
Kresge, Clarence F.....	Jamesburg.....	140	44	3	15	2	10	3	873	10	4	14	23	18			1	10		5	4	2,229.89		49.00	2,278.89
Lewis, Charles.....	Rebuck.....	71	24	2		2	6	2	180	2	2	4	14		1		1	12				2,391.01	15.00	75.00	2,481.01
Lutz, R. W.....	Bush Hollow.....	113	40	1	25	1		4	266	20	9	29	12			1	1	3	15	2	6	3,275.09	115.00	70.00	3,460.09
Lutz, Mrs. R. W.....	Unstationed.....																								
Mayes, Edwin P.....	State College Cir.....	99	65	2	20	2	15		125				20				2	12	2	2		2,097.12	93.99	160.00	2,351.11
Mayes, Mrs. Edwin P.....	Unstationed.....	4	3					43																	
McCracken, D. I.....	Jersey Shore.....	72	30	1		2	6	1	325	35		35	7			2		5		10		1,345.88		50.00	1,395.88
McCracken, Mrs. D. I.....	Unstationed.....	18	4		30				290				4						3			862.00			862.00
Pennycoff, Leroy E.....	Supply.....	59			25	5											2					315.00			315.00
Pickering, R. E.....	Evangelist.....	59			5	5											2					400.00			400.00
Printz, Ward F.....	Song Evangelist.....																								
Rutherford, Earl S.....	Cherryville.....	50	16	1		3	8	1	209	12	19	31	7			1	2	19		6		1,865.00		45.00	1,910.00
Siefken, Oscar W.....	Lebanon.....	74	41	2	1	1	7		200				4			1		4	10	2	3	617.41	2,175.00		2,792.41
Seelig, Robert C.....	Muir.....	105	23	2	4	1	11	5	241	7	2	9	16					10	8	1	6	993.00	5.00	45.85	1,043.85
Shafer, David.....	Teacher—Col. Spr.....	35	5					20											10	2	9	2,300.00			2,300.00
Shafer, Sadie.....	Ashland.....	73	29	3		3	2	271								1	2	1		2	9	1,168.81	245.05	265.05	1,679.41
Shemelia, Edward J.....	Evangelist.....	323		1		20							60			1						3,297.72			3,297.72
Smith, George R.....	Unstationed.....	10	6																						
Smith, Mrs. Harry J.....	Turnerville.....	76	36	8	15		11		88	8	6	14	10		5	1		12	8	9	5	915.00			915.00
Snader, Albert.....	Unstationed.....																								
Sorrells, Charles H.....	Harrisburg.....	103	32	3	84	3	25	6	204	71	45	116	55	1		2	2	5		3		1,897.64	380.00	289.30	2,566.94
Strohl, Mrs. Florin.....	Unstationed.....		2		6				30																
Walls, A. A.....	Unstationed.....	14											1									37.40			37.40
Washburn, John J.....	Highland.....	84	34	3	8	2	11									1		16		2	10	703.99		70.00	773.99
Welch, William.....	Beech Creek.....	101	44	1	1	1	14	2	376	37	13	50	31		9	3	4	4		5	8	2,335.14			2,335.14
Wert, C. E.....	E. Pilgrim College.....																								
Wolfe, J. E.....	Colporteur.....	1											5					7	2			201.61			201.61
Yoder, Emma E.....	Unstationed.....																								
Zehner, Lester W.....	Pine Grove.....	82		1		8		270					20		1					1	6	1,594.55	43.00	75.00	1,712.55
Zehner, Mrs. L. W.....	Unstationed.....	37	25		29			10					1									40.00			40.00
Bubb, Wilbur.....	E. Pilgrim College.....																			2	9	904.00			904.00
Campbell, Robert.....	Student.....	20			8																	133.38			133.38
Massey, Albert.....	Williamsport.....	94	30	2		2	10		282				2		1			4		10		2,700.00	316.00		3,016.00
Rotz, Eldon T.....	Evangelist.....	277				16							20		1		2					3,530.00			3,530.00
Balliet, Burton B.....	Student.....	5																	14						
Fetterolf, Leroy.....	Student.....	42			1			5	13	2	15	1										163.62			163.62
Honeycutt, W. E.....	Evangelist.....	231			15			55			184									7½		1,885.15			1,885.15
Gehman, Daniel L.....	Trenton.....	76	42	2	11	9		198	4	3	7	5	1			3		5	21	10		1,445.00	91.45	300.00	1,836.45
Fitch, Mrs. Constance.....	Missionary.....				154																	1,200.00			1,200.00
Newton, Frederic J.....	Unstationed.....	3	1	2	2															9					
Parker, Thelma F.....	Evangelist.....	103	15		3	5	4	283	34	17	51	19				2	2	2	5			820.44	88.00	256.62	1,165.06
Wooter, David J.....	Summit Hill.....	31	6		18	1	3	2	25	4	1	9	12							2		337.26	50.00	50.00	437.26
Wallace, R. V.....	Muncy.....	80		3		1	8	2	540	3	1	4	8	7		1	3	11	5	9		1,781.23	50.00	91.50	1,922.73
Key, Mrs. Edward B.....	Unstationed.....							100																	
		6899	2088	139	1045	167	532	122	16,883	805	312	1895	1236	35	121	52	111	773	301			\$135,869.28	\$7,790.12	\$6,060.00	\$135,959.22

## LOCAL EXPENDITURES

Church	Pastor's Support	Evangelist's Support	Janitor	Interest	Fuel and Light	Rent and Insurance
Allentown	\$ 2,805.00	\$ 657.50	\$ 180.00		\$ 563.55	
Allenwood	2,100.37	325.00		\$ 40.00	76.92	\$ 44.44
Armstrong Valley	1,140.80	70.00	20.00		49.37	4.90
Ashland	1,392.08	275.20	48.90		90.21	66.00
Augustaville	3,380.00	505.00			107.43	67.07
Beech Creek	2,335.14	125.01	47.50		70.97	71.75
Bethlehem	3,385.00	365.00	435.00	241.55	668.59	241.00
Bridgeton	1,670.00	193.00			189.28	735.60
Bush Hollow	3,275.08	311.75	53.00	112.75	202.63	
Cherryville	3,100.00	285.00	376.00	322.50	649.92	306.63
Coleville	2,860.00	174.00	120.00		253.04	13.04
Delaware Run	3,365.00	442.00	180.00	153.05	351.31	80.00
East Bangor	256.54	12.00	20.00		45.07	
Erma, N. J.	1,860.00	230.00			301.90	71.70
Frackville	449.79	140.00	120.00		188.36	
Glassboro	4,326.86	520.00	221.00		293.63	
Glen Iron	1,605.00	76.41	60.00		35.68	4.71
Gloucester City	1,252.51	208.00			59.35	529.00
Harrisburg	1,540.00	398.00			290.65	262.50
Highland	703.99	192.00			240.25	17.00
Hyde	4,340.47	475.00			238.06	
Jamesburg	2,229.89	140.00		258.21	206.69	
Jersey Shore	2,215.00	285.00			137.78	523.20
Lebanon	617.41	105.00		70.00	159.11	23.02
Levittown	1,905.00	200.00			218.75	
Linden Hall						
Lock Haven	5,150.43	495.00	300.00		277.78	237.00
Loganton	2,365.00	430.00	25.00	27.24	99.47	
Middleburg	1,860.80	320.00		10.51	86.66	4.56
Millersburg	3,120.00	570.00	202.95		351.31	190.05
Millville	2,600.00	150.00	49.03	212.45	57.64	94.65
Milroy	2,163.60	200.00	168.00	63.89	161.56	4.05
Milton	2,600.00	450.00	360.00		146.68	168.12
Mt. Union	1,924.00	227.63	15.20	220.94	97.23	26.03
Muir	993.00	19.13			73.88	208.00
Muncy	1,954.53	10.00	73.00	52.23	338.26	
North Rome	2,650.00	418.80		152.38	175.07	37.77
Pine Grove	1,594.55	300.00			197.04	94.80
Pocono Lake	2,295.00	477.00			229.17	20.25
Port Matilda	417.75	140.00	24.00		124.93	
Reading	2,600.00	713.32	285.00	149.49	550.00	74.61
Rockville	3,110.00	418.50		362.02	266.41	328.57
Rebuck	3,898.69	675.00			437.15	
Salem	1,660.93	130.00			181.25	366.68
Shillington	2,650.00	360.00	240.00	31.13	498.46	
State College	1,303.00	192.12	42.00		77.60	82.65
Stonington	2,767.64	100.27			395.48	
Stroudsburg	3,640.00	603.00	555.00	405.00	797.72	248.81
Summit Hill	1,881.04	589.54	60.00	20.63	130.79	25.00
Sunbury	3,120.00	422.00	130.00		576.89	363.64
Trenton	1,512.00	50.00		71.59	95.52	72.28
Turnerville	915.00	300.00	180.00		156.84	75.38
Williamsport	2,880.00	315.00	247.00		744.51	86.32
Woodbury	2,236.00	285.00	166.00	138.00	131.61	35.00
York	1,518.00	170.00	15.00	245.62	320.81	
TOTALS	\$12,149.89	\$16,236.18			\$13,465.92	

# LOCAL EXPENDITURES

Church	Improvements	Indebtedness	Sunday School Supplies	Special Interests	Tax	Incidentals	Total Local Expenditures
Allentown.....	\$ 2,745.63		\$ 484.50	\$ 243.49	\$ 265.01	\$ 11.75	\$ 7,905.43
Allenwood.....	530.52		103.69			118.87	3,471.81
Armstrong Valley.....	7.44		52.61	5.00		28.52	1,378.74
Ashland.....	87.75		74.99		25.00	64.77	2,124.00
Augustaville.....	680.97		95.90	309.14	10.10	291.14	5,446.75
Beech Creek.....	69.73		67.38	20.67		3.00	2,821.17
Bethlehem.....	3,446.15	\$ 600.00	241.73	30.00	92.64	871.21	10,617.87
Bridgeton.....	239.78	666.75	89.49			286.18	4,070.08
Bush Hollow.....	690.75	150.00	166.09	48.31		70.70	5,116.91
Cherryville.....	26,140.45	750.00	176.18		2.16	1,940.26	34,240.10
Coleville.....	1,898.03		213.54			171.43	5,603.08
Delaware Run.....	503.46	555.00	119.22	379.14		112.88	6,241.06
East Bangor.....			51.87	25.91	7.06	20.01	431.40
Erma, N. J.....	319.37		76.16	109.20		264.11	3,232.44
Frackville.....			50.33			125.20	1,073.68
Glassboro.....	1,111.60		311.38	1,188.16		108.56	8,081.29
Glen Iron.....	230.50		66.59			43.44	2,124.33
Gloucester City.....			104.38			223.39	2,380.63
Harrisburg.....	200.00		40.00			302.67	2,853.82
Highland.....	61.65	767.78	71.06	53.39		56.69	2,164.71
Hyde.....	695.61		151.85	365.72		373.20	6,689.91
Jamesburg.....	231.79	312.41	311.85	27.42		28.86	3,902.57
Jersey Shore.....	102.83		121.63	43.40	12.05	146.48	3,587.29
Lebanon.....	291.12		30.56		3.35	151.48	1,456.05
Levittown.....			44.79	268.81		127.81	2,765.16
Linden Hall.....							
Lock Haven.....	766.44		191.73	334.40	94.96	112.90	7,960.84
Loganton.....	807.36	873.67	92.98	18.00	19.60	42.04	4,808.36
Middleburg.....	368.08	500.00	46.64			242.52	3,449.45
Millersburg.....	1,315.23	300.00	109.36	109.36		445.54	6,714.20
Millville.....	290.69	187.17				441.47	4,083.10
Milroy.....	206.04	416.11	115.33		64.20	89.78	3,652.58
Milton.....	555.81		220.93	127.50		398.50	5,027.54
Mt. Union.....		227.50	136.94	7.04		151.77	3,084.18
Muir.....	46.80	25.00	45.96			62.00	1,478.77
Muncy.....	1,182.73	1,332.17	203.79			529.68	5,676.49
North Rome.....	552.00	394.00	182.32	194.18	34.69	239.95	5,025.16
Pine Grove.....		15.75		49.14		22.29	2,273.57
Pocono Lake.....			318.52			840.00	4,179.94
Port Matilda.....	46.14		30.04			18.47	969.83
Reading.....	164.47	1,744.30	381.95	942.42	140.74	365.81	8,112.11
Rockville.....	244.30	1,753.53	194.16	226.00	72.95	74.65	7,051.07
Rebuck.....	804.77		205.73	1,173.60		243.71	7,438.65
Salem.....	9.40	386.59	96.47	8.00		81.40	2,920.72
Shillington.....		2,246.51	52.96		143.60	356.82	6,579.58
State College.....	276.13		66.12	114.94			2,154.56
Stonington.....	3,705.51		78.47	163.59		130.31	7,351.27
Stroudsburg.....	12,836.82	500.00	479.18	533.13	30.13	725.88	21,354.67
Summit Hill.....	97.76	475.00	75.35			219.38	3,574.47
Sunbury.....	998.67		146.28	649.74		276.68	6,684.40
Trenton.....	549.35	383.41	72.50			416.19	3,222.84
Turnerville.....	714.66		174.67	117.27		291.55	2,925.37
WilliamSPORT.....	520.15		226.38	422.10	102.33	471.67	6,213.46
Woodbury.....	251.32	165.60	136.85	35.00		469.87	4,049.91
York.....	36.23	301.38	50.56	8.00	99.44	284.50	3,049.63
TOTALS.....	\$67,400.20		\$ 7,399.14	\$8,350.17		\$14,186.84	\$280,762.00

## DISTRICT EXPENDITURES

Church	Superintendent by Pastor	Superintendent by Church	Superintendent by Evangelists and Teachers	Retirement and Emergency	District Expense 7%	Home Missions 7%	Eastern Pilgrim College 7%	Home Missions Special Apportionment	Eastern Pilgrim College Special Apportionment	Minutes	Total District Expenditures
Allentown	\$ 140.25	\$ 56.30		\$ 5.61	\$ 119.39	\$ 119.40	\$ 238.79	\$ .96	\$ 3.00	\$ 8.00	\$ 798.74
Allenwood	105.07	5.00		4.23	19.89	19.89	37.78	12.00	16.55	5.60	228.01
Armstrong Valley	58.44	15.31	\$115.00	2.34				12.00	7.25	7.60	97.30
Ashland	169.00	13.65			37.00	37.00		22.00	43.17	3.20	265.46
Augustaville	110.50	10.00		4.45	43.22	43.22	70.00	36.00	94.56	4.00	461.21
Beech Creek	57.45	9.00				10.00	86.35	22.00	.50	3.20	327.29
Bethlehem	166.00	30.00		6.64	84.00	84.00	168.00	96.00	336.00	5.20	975.84
Bridgeton	60.25	8.72		3.00	53.00	26.50	26.50			7.00	184.97
Bush Hollow	143.03	11.92		5.74	58.83	58.83	117.69	27.70		3.20	426.94
Cherryville	158.00	15.00		2.40	112.31	112.30	224.59	90.60	134.09	6.80	865.09
Coleville	143.00	15.00			68.27	68.27	136.78	79.96	132.01	4.80	648.01
Delaware Run	125.00	24.64	74.10		160.00				40.00	5.60	429.34
East Bangor	18.16					19.58					37.74
Erma, N. J.	77.25	31.71		3.20	4.79	4.79	9.57	4.46		4.80	140.47
Frackville	30.00	25.41		1.50	12.00	12.00	24.00			3.50	108.41
Glassboro	211.12	30.00		6.00	76.89	76.89	154.82	96.00	192.00	8.00	894.72
Glen Iron	83.00	7.46		3.32	84.00	92.84	70.50	12.00	49.50	1.20	403.82
Gloucester City	57.34	6.77	14.25	4.33	35.78			18.00	16.00	2.00	154.47
Harrisburg	61.62	17.00					12.00		1.25		91.87
Highland	49.64	16.78		1.53	4.25	2.13	2.12		16.00	2.80	95.25
Hyde	219.37	19.50		8.48	97.09	97.09	194.20	36.00	107.05	4.00	784.09
Jamesburg	100.05	7.05		4.42	13.00	13.00	13.00				150.52
Jersey Shore	115.56	10.00		3.86		47.75	47.75	95.00	34.58	4.80	359.27
Lebanon											
Levittown	78.00	10.00		4.00	8.75	8.75	17.50		7.25		162.50
Linden Hall											
Lock Haven	257.51	22.50		10.30	128.27	128.27	257.51		14.00	7.20	825.54
Loganton	90.00	13.50		5.00	7.00	7.00	7.00		21.23	4.00	155.23
Middleburg	95.00	8.00		3.70	5.00	9.50				2.80	122.20
Millersburg	156.00	30.85		6.25	84.04	84.05	168.09	88.00	3.50	4.80	625.58
Millville	110.00	12.86						69.90		8.00	235.44
Milroy	113.33	15.00		4.60	7.50	3.75	3.75	24.00	8.00	3.20	183.13
Milton	130.00	10.00			182.00			92.00	240.58	6.80	665.38
Mt. Union	78.70	13.57		3.85	16.00	15.50	15.70	12.00	7.00	2.40	164.72
Muir	49.66	10.54		1.01	10.71	10.90	21.15	12.00	15.20	2.80	137.97
Muney	100.39	5.03		4.02	14.00	11.00	12.50	4.00	34.00	4.00	188.94
North Rome	131.75	20.00		4.80	95.59				111.00	3.20	381.34
Pine Grove	13.18									4.00	17.18
Pocono Lake	106.80	22.57			42.07	42.07	84.11	60.00	83.00	3.20	443.32
Port Matilda	21.37	4.55		.92						2.00	29.84
Reading	120.00	15.80		4.80	76.42	76.47	152.93	88.00	187.00	6.80	728.22
Rockville	90.00	30.00		5.00	12.50	12.50	25.00				175.00
Rebuck	179.08	25.00		16.49	119.19	119.19	238.38	96.00	208.00	8.00	1,007.33
Salem	84.81	12.40		4.90	18.00					4.00	124.11
Shillington	139.00	10.00		3.00	19.50	34.00	19.50		18.05		243.05
State College	79.89	8.15		3.06				2.75	3.00	2.00	98.85
Stonington	139.48	25.00		5.35	32.28	32.29	64.56	36.00		5.60	340.56
Stroudsburg	210.00	30.00		8.00	158.71	158.71	317.42	96.00	258.00	8.00	1,244.84
Summit Hill	95.05	21.55		3.77	32.70	32.70	65.39	11.96		2.40	302.52
Sunbury	156.00	22.32		6.24	5.66	5.66	51.17	5.66	138.00	8.00	390.81
Trenton	76.94	13.46		3.02	46.81	46.83	93.63	24.00	66.00	4.00	374.69
Turnerville	45.75	30.00		1.83	43.44	43.44	86.84	12.00	75.00	6.40	344.70
WilliamSPORT	135.00	25.00		5.40	89.73	89.73	186.13	60.00	252.15	4.00	857.14
Woodbury	60.00	10.00			75.02	75.02	75.03	49.81	36.00	5.00	385.88
York	86.70	30.70		4.40			12.00	12.00		1.60	147.40
TOTALS	\$5,688.99	\$894.57		\$194.76	\$2,414.60	\$1,992.81	\$3,579.73	\$1,516.86	\$3,009.48	\$219.50	\$20,001.94

# GENERAL EXPENDITURES

Church	General Budget	Special Foreign Missions	Special Church Extension	Special Administration	Church Extension Loan Fund	Sunday School and Youth	Pension Fund by Church	Pension Fund by Pastor	Special Interests
Allentown.....	\$ 330.00	\$ 706.36	\$ 84.63			\$ 26.09			\$ 18.00
Allenwood.....	130.17	164.33	12.55	\$18.00		19.47			
Armstrong Valley.....	72.00	28.68							
Ashland.....	135.04	366.48							22.38
Augustaville.....	209.00	386.23	49.00						
Beech Creek.....	70.85	92.56							16.80
Bethlehem.....	539.00	490.45	121.57			25.00	\$ 135.40	\$ 67.70	\$ 60.00
Bridgeton.....	60.64	120.02	27.66			5.61			
Bush Hollow.....	38.52	118.75				10.50			21.73
Cherryville.....	300.00	155.32	170.85				46.80	23.40	15.51
Coleville.....	233.22	94.37							395.20
Delaware Run.....		224.06	45.25						
East Bangor.....			11.65						
Erma, N. J.....	10.44	10.43							89.00
Frackville.....	31.85	119.00	16.50	\$25.00	\$12.00	44.00	80.00	40.00	
Glassboro.....	360.00	786.44	24.06			33.65			
Glen Iron.....	121.00	235.97	25.79						
Gloucester City.....	30.24	94.45			10.65				
Harrisburg.....	31.85	30.00	13.91						20.48
Highland.....	5.00	42.23	34.00						
Hyde.....	379.55	1,673.50							102.89
Jamesburg.....	85.36		19.05			5.50			
Jersey Shore.....	77.77	226.39	20.00				97.14	44.45	
Lebanon.....		40.25	10.00						
Levittown.....	11.00	15.00	10.00			4.34	61.60	30.80	
Linden Hall.....									
Lock Haven.....	546.38	302.35	50.05						
Loganton.....	142.14	70.28	15.31			10.77			
Middleburg.....		368.45			40.00				
Millersburg.....	282.00	932.57	106.22			27.83	124.80	62.40	
Millville.....	96.00	629.02	32.01			15.72			
Milroy.....	156.77	60.33	18.00			19.00			
Milton.....	385.00	1,610.72	181.78			25.73			
Mt. Union.....	5.50	51.34	15.00			5.00			
Muir.....	82.50	211.33	20.00	8.46					
Muncy.....	41.45	143.27	15.00			4.00	48.00	24.00	7.82
North Rome.....	272.63	258.75	70.35						
Pine Grove.....		9.35							
Pocono Lake.....	216.00	1,018.00	64.50						132.08
Port Matilda.....	36.24	11.76	18.92						
Reading.....	342.10	626.26	110.00			31.59	96.00	48.00	
Rockville.....	187.00	313.72							
Rebuck.....	363.00	1,952.05	785.00				79.64	39.82	
Salem.....	108.74	25.00	12.00						22.78
Shillington.....	110.00	686.19	10.00						
State College.....	28.93	115.32							72.69
Stonington.....	477.04	77.08	45.22						58.85
Stroudsburg.....	466.80	276.80	190.30				148.40	74.20	
Summit Hill.....	8.92		6.00						
Sunbury.....	785.87	103.00						62.40	
Trenton.....	121.00	130.42	40.00	25.00	30.00	21.95			
Turnerville.....	137.50	518.25	91.07			12.30			
Williamsport.....	291.36	393.17	165.00			22.00	120.00	60.00	
Woodbury.....	66.72	42.84	55.00						174.83
York.....		120.64	27.23						
TOTALS.....	\$9,020.09	\$17,279.53	\$2,840.43				\$1037.78	\$577.17	

## FINANCIAL BALANCES

<i>Church</i>	<i>Total General Expenditures</i>	<i>Grand Total of Expenditures</i>	<i>Balance All Departments</i>
Allentown .....	\$ 1,357.08	\$ 10,061.25	\$ 1,092.09
Allenwood .....	334.52	4,034.34	668.74
Armstrong Valley .....	100.68	1,486.72	69.36
Ashland .....	558.75	2,948.21	108.20
Augustaville .....	644.23	6,552.19	1,197.93
Beech Creek .....	186.20	3,334.66	282.40
Bethlehem .....	1,439.12	13,032.83	600.73
Bridgeton .....	213.93	4,468.98	.....
Bush Hollow .....	189.50	5,733.35	652.53
Cherryville .....	711.88	35,817.07	137.06
Coleville .....	722.79	6,973.88	393.25
Delaware Run .....	269.21	7,382.84	149.64
East Bangor .....	11.65	480.79	.....
Erma, N. J. ....	109.87	3,482.78	115.75
Frackville .....	368.35	1,550.44	6,947.28
Glassboro .....	1,204.15	10,180.16	339.80
Glen Iron .....	392.76	2,849.31	291.00
Gloucester City .....	135.34	2,670.44	68.52
Harrisburg .....	96.24	3,041.93	79.37
Highland .....	81.23	2,341.19	4.03
Hyde .....	2,173.94	9,597.94	759.08
Jamesburg .....	109.91	4,163.00	272.29
Jersey Shore .....	465.75	4,412.31	166.18
Lebanon .....	50.25	1,506.30	6.37
Levittown .....	132.74	3,060.40	2.59
Linden Hall .....	.....	.....	.....
Lock Haven .....	898.78	9,685.16	3,439.94
Loganton .....	238.50	5,202.09	245.49
Middleburg .....	408.55	3,970.88	404.79
Millersburg .....	1,535.82	8,875.60	727.30
Millville .....	975.92	5,091.29	225.72
Milroy .....	254.07	4,089.78	.52
Milton .....	2,203.23	7,896.16	686.90
Mt. Union .....	76.84	3,325.74	51.06
Muir .....	322.29	1,934.03	23.39
Muncy .....	283.54	6,482.87	302.51
North Rome .....	601.72	6,008.22	34.35
Pine Grove .....	9.35	2,300.10	505.16
Pocono Lake .....	1,430.59	6,054.35	378.81
Port Matilda .....	66.82	1,065.48	58.22
Reading .....	1,253.95	10,094.28	306.50
Rockville .....	500.72	7,726.79	661.66
Rebuck .....	3,219.51	11,665.48	5,071.00
Salem .....	168.52	3,213.35	261.68
Shillington .....	806.19	7,628.82	982.82
State College .....	216.94	2,543.04	137.64
Stonington .....	658.19	8,350.02	235.65
Stroudsburg .....	1,156.58	23,756.01	4,110.88
Summit Hill .....	14.92	3,891.91	29.16
Sunbury .....	951.27	8,026.48	548.20
Trenton .....	368.37	3,865.90	237.49
Turnerville .....	759.12	4,029.19	247.05
Williamsport .....	1,051.53	8,122.13	312.60
Woodbury .....	335.39	4,771.18	71.31
York .....	147.87	3,344.90	1,008.20
TOTALS .....	\$32,965.13	\$344,674.54	\$35,710.19

PROPERTY STATEMENT

Church	CHURCH		PARSONAGE		Other	Equity
	Valuation	Debt	Valuation	Debt		
Allentown.....	\$ 15,000.00	.....	\$ 15,000.00	.....	.....	\$ 30,000.00
Allenwood.....	8,000.00	.....	6,000.00	\$ 1,000.00	.....	13,000.00
Armstrong Valley.....	3,000.00	.....	.....	.....	.....	3,000.00
Ashland.....	3,500.00	.....	4,500.00	.....	.....	8,000.00
Augustaville.....	3,000.00	.....	3,000.00	.....	.....	6,000.00
Beech Creek.....	5,000.00	.....	4,000.00	.....	.....	9,000.00
Bethlehem.....	15,000.00	\$ 3,700.00	5,000.00	.....	.....	16,300.00
Bridgeton.....	20,000.00	.....	.....	.....	.....	20,000.00
Bush Hollow.....	2,500.00	.....	7,000.00	2,350.00	.....	7,150.00
Cherryville.....	60,000.00	20,250.00	9,000.00	.....	.....	49,050.00
Coleville.....	6,000.00	100.00	5,000.00	.....	.....	10,900.00
Delaware Run.....	25,000.00	4,500.00	2,500.00	.....	.....	23,000.00
Erma.....	12,000.00	.....	.....	.....	.....	12,000.00
Frackville.....	.....	.....	.....	.....	.....	.....
Glassboro.....	10,000.00	.....	12,000.00	.....	.....	22,000.00
Glen Iron.....	5,000.00	.....	5,000.00	.....	.....	10,000.00
Harrisburg.....	12,000.00	4,000.00	.....	.....	.....	8,000.00
Highland.....	2,000.00	.....	2,000.00	400.00	.....	3,600.00
Hyde.....	8,000.00	.....	6,000.00	.....	.....	14,000.00
Jamesburg.....	22,000.00	3,150.00	7,000.00	1,550.00	.....	24,300.00
Jersey Shore.....	9,000.00	.....	.....	.....	500.00	9,500.00
Lebanon.....	10,000.00	2,825.00	.....	.....	.....	7,175.00
Levittown.....	11,800.00	.....	.....	.....	.....	11,800.00
Linden Hall.....	.....	.....	.....	.....	.....	.....
Lock Haven.....	.....	.....	.....	.....	.....	.....
Loganton.....	4,000.00	.....	3,100.00	850.00	.....	6,150.00
Middleburg.....	3,000.00	.....	5,000.00	.....	.....	8,000.00
Millersburg.....	20,000.00	1,500.00	8,000.00	.....	.....	26,500.00
Milroy.....	2,500.00	.....	5,000.00	1,051.00	.....	6,449.00
Milton.....	7,500.00	.....	5,000.00	.....	.....	12,500.00
Millville.....	10,000.00	.....	4,500.00	821.00	.....	13,678.00
Mt. Union.....	5,000.00	.....	8,000.00	4,244.00	.....	8,756.00
Muir.....	3,000.00	.....	.....	.....	.....	3,000.00
Muncy.....	4,000.00	1,000.00	6,500.00	650.00	.....	8,850.00
North Rome.....	14,000.00	2,406.00	5,000.00	.....	.....	16,594.00
Pine Grove.....	4,000.00	.....	2,000.00	.....	.....	6,000.00
Pocono Lake.....	6,000.00	.....	5,000.00	.....	.....	11,000.00
Port Matilda.....	1,000.00	.....	1,500.00	.....	.....	2,500.00
Reading.....	15,800.00	.....	10,500.00	3,350.00	.....	22,949.00
Rebuck.....	15,000	.....	4,000.00	.....	.....	19,000.00
Rockville.....	15,000.00	5,569.00	6,500.00	4,600.00	.....	11,330.00
Salem.....	15,000.00	3,201.00	.....	.....	.....	11,798.00
Shillington.....	4,000.00	.....	6,500.00	1,500.00	.....	9,000.00
State College.....	.....	.....	.....	.....	.....	.....
Stonington.....	15,000.00	2,000.00	6,000.00	.....	.....	19,000.00
Stroudsburg.....	40,000.00	10,875.00	8,000.00	.....	.....	37,125.00
Summit Hill.....	2,500.00	.....	2,500.00	125.00	.....	4,875.00
Sunbury.....	10,000.00	.....	6,500.00	.....	.....	16,500.00
Trenton.....	7,500.00	.....	10,000.00	1,236.00	.....	16,264.00
Turnersville.....	5,000.00	.....	.....	.....	.....	5,000.00
Williamsport.....	19,000.00	.....	10,000.00	.....	.....	29,000.00
Woodbury.....	.....	.....	.....	.....	.....	.....
Gloucester City.....	4,000.00	.....	.....	.....	.....	4,000.00
York.....	6,500.00	4,578.00	.....	.....	2,700.00	4,622.00
TOTAL.....	\$525,100.00	\$ 65,076.00	\$222,100.00	\$ 24,727.00	\$3,200.00	\$658,225.00

## GENERAL RESOLUTIONS

### **Close of Conference Year**

1. BE IT RESOLVED, that our Conference Year end on April 30.

### **Deadline for Statistical and Financial Reports**

2. BE IT RESOLVED, that all reports to the District Statistician and remittances to the District Treasurer be postmarked not later than May 15.

### **Minimum Age for District Conference Delegates**

3. INASMUCH as the Church Manual does not state an age requirement for Delegates to the District Conference,

BE IT RESOLVED that we require Delegates to the District Conference to be 18 years of age or over.

### **Questionnaire for Ministers Entering Pa.-N. J. Conference**

4. WHEREAS the District Council generally lacks the proper and necessary information relative to ministers of other districts and denominations desiring membership in our district;

BE IT RESOLVED that the same be required to answer a questionnaire supplied by the District Council.

### **Church Call to Ministers Outside District**

5. BE IT RESOLVED that no church shall extend a call to a minister outside of the District without having first obtained the approval of the District Council.

### **Council Permission for Ministerial Membership in Local Church**

6. BE IT RESOLVED that no one, having held or holding ministerial credentials, making application for membership in any of our churches, shall be accepted without the approval of the District Council.

### **Council and Delinquent Ministers**

7. BE IT RESOLVED that this Conference require the District Council to deal with those holding Credentials from our District who do not support the Conference with their personal assessments, nor send in their statistical and financial reports, regardless of their field of labor.

### **Camp Youth Rally**

8. BE IT RESOLVED that the Saturday afternoon and evening of the Camp Meeting be declared a District Youth Rally and that the Executive Secretary of Youth, together with the District Council, make further plans and announcements for the same.

### **Time of Ordination Service**

9. BE IT RESOLVED that our Ordination Service be held during the morning of the second Conference Session at 10:30 a. m.

### **Recommendations for First District Ministers' Licenses**

10. INASMUCH as the responsibility for the execution of all Conference action rests primarily on its entire ministry,

BE IT RESOLVED that this Conference instruct its Examining Board to recommend for their first district licenses, only those who give evidence of intention to take a permanent place in the ministry.

### **Council Permission for Building and Repair**

11. BE IT RESOLVED that any congregation considering the erection of a church building and/or parsonage, or the making of extensive improvements and remodeling of church property costing more than \$2,000.00, submit their tentative plans for the same to the District Council for approval before final action by the local board and the beginning of said construction.



### **Appointment and Notification of Youth Officers**

12. BE IT RESOLVED that the newly elected District Council appoint the District Young Peoples officers and notify them of their appointment within one week after the annual conference adjourns.

### **Home Missions Committee**

13. BE IT RESOLVED that the Conference elect a District Home Missions Committee, and

That the District Council nominate six candidates to the Conference, from which the Conference shall elect three, and

That the one receiving the highest number of votes shall hold office for three years, the next highest for two years, and the third highest for one year, and

That the District Superintendent shall be Chairman of the Committee, and

That the Home Missions Committee shall have authority to direct all Home Missionary work.

### **District Superintendent's Revival Schedule**

14. BE IT RESOLVED that the District Superintendent be permitted to conduct only two revivals a year outside of the bounds of the Conference.

## **WAYS AND MEANS RESOLUTIONS**

### **Ministerial Tithes to District**

1. BE IT RESOLVED, That we require all our pastors to pay 50% of their tithe received from ministerial work, through the local treasurer to the district treasurer; and all other licensed and ordained ministers send 50% of the tithe they receive from Christian service direct to the District Treasurer.

### **Superintendent's Salary and Expense Account**

2. BE IT FURTHER RESOLVED, That we pay our District Superintendent a salary of \$4,000.00 per year, and that each pastor shall raise an offering upon the visit of the Superintendent for his expenses and that the telephone, postage and telegrams shall be paid from the District Treasury. (§2, 1953, No. 6) The District shall also provide the Superintendent's utilities and fuels.

### **Division of Ministerial Tithes**

3. BE IT FURTHER RESOLVED, That 40% of the surplus of ministerial tithes over the amount required for the District Superintendent's salary and the Pilgrim Pension Plan allotment be placed in a District Parsonage Fund, and the remaining 60% surplus in the Home Missionary Fund.

### **Ministerial Assessment for Superintendent's Retiring And Emergency Fund**

4. WHEREAS, There has been no fund provided to maintain the Superintendent's Retiring and Emergency Fund,

BE IT RESOLVED, That all of our actively engaged ministers be required to pay 2% of their tithe to the said fund.

### **District Expense Deficits**

5. RESOLVED, That the Council be authorized to make a special appeal to the churches for the funds to meet deficits which might develop in the District Expense Fund at any time.

### **General Conference Expense Fund**

6. INASMUCH, As there is no provision to raise the funds for the delegates' expense to the General Conference,

BE IT RESOLVED, That we deduct ten percent from the District Expense Fund for this purpose.

### **District Budget**

7. RESOLVED, That 7% of the total church receipts, excepting General Budget, money for indebtedness, building fund, Sunday School, young people's society funds, and special funds raised for the departments covered by the District Budget, be paid monthly to the District Treasurer to be apportioned by him as follows:

Eastern Pilgrim College .....	50%
District Home Missions .....	25%
District Expense .....	25%

### **Salaries of Treasurer, Secretary and Statistician**

8. RESOLVED, That the following officers be remunerated for their services from the District Expense Fund as follows:

District Treasurer .....	annually \$150.00
District Secretary .....	50.00
District Statistician .....	25.00
Promotional Secretary of Sunday Schools .....	25.00

### **Eastern Pilgrim College Special Apportionment**

9. BE IT RESOLVED, That each church raise a minimum equivalent to 25¢ per member, per month for the Eastern Pilgrim College.

### **Conference Remembrances for Bereaved Ministers' Families**

10. SINCE, There are times when death enters the immediate family of our ministers,

BE IT RESOLVED, That the District send a floral tribute and a love offering of \$50.00 to such bereaved families, payment to be made from the Retiring and Emergency Fund.

### **Church Building Loan Fund**

11. WHEREAS, A generous gift of \$500.00 has been received by the District Council with which to establish a fund from which loans may be made to new and needy churches,

BE IT RESOLVED, That we maintain a Church Building Loan Fund. The fund is to be held in trust by the District Council, and

That 5% of the total Home Missionary Offerings be appropriated by the District Treasurer to the increase of said Church Building Loan Fund.

Loans can be made from said fund by the Council to congregations endeavoring to erect or buy a church or parsonage, but only after a thorough investigation of the financial status of the congregation by the Council. (§4 as amended by 1953 No. 2).

When a loan is granted, the congregation to which the loan is made shall give a note to the District Treasurer signed by the local trustees.

The principal shall be paid back in installments, with interest at 5% in advance, monthly, except that the minimum charge for interest shall not be less than 50¢ per month. The amount of the monthly installments shall be determined by the District Council.

The District Treasurer shall mail a statement of the amount due on the 20th of each month to each church that has a loan from said Fund.

In the event that a congregation which has made a loan according to this plan, fails to meet its installments for a period of three months, its financial standing shall be investigated by the District Council.

### Parsonage Utilities

12. WHEREAS, Some of our churches provide the utilities for their parsonages, and

WHEREAS, There is a growing interest among the District churches to provide the same,

BE IT RESOLVED, That, as far as possible, each church provide its parsonage with a cooking range, electricity, fuel for heating and cooking, water, and telephone service.

### Home Missionary Apportionments to Local Churches

13. RESOLVED, That the following apportionments be paid monthly through the District Treasurer to the Home Missionary Department:

Allentown -----	\$8.00	Millersburg -----	\$7.00
Allenwood -----	2.00	Millville -----	5.00
Armstrong Valley -----	1.00	Milroy -----	5.00
Ashland -----	2.00	Milton -----	8.00
Augustaville -----	3.00	Mt. Union -----	1.00
Beech Creek -----	2.00	Muir -----	1.00
Bethlehem -----	8.00	Muncy -----	1.00
Bridgeton -----	2.00	North Rome -----	1.00
Bush Hollow -----	1.00	Pine Grove -----	2.00
Cherryville -----	7.00	Pocono Lake -----	5.00
Coleville -----	5.00	Port Matilda -----	2.00
Delaware Run -----	3.00	Reading -----	8.00
Erma -----	1.00	Rebuck -----	8.00
Frackville -----	1.00	Salem -----	1.00
Glassboro -----	8.00	Shillington -----	2.00
Glen Iron -----	1.00	State College -----	1.00
Gloucester -----	1.00	Stonington -----	3.00
Harrisburg -----	4.00	Stroudsburg -----	8.00
Highland -----	1.00	Summit Hill -----	1.00
Hyde -----	3.00	Sunbury -----	7.00
Jersey Shore -----	2.00	Trenton -----	2.00
Lebanon -----	1.00	Turnersville -----	1.00
Linden Hall -----	1.00	Williamsport -----	5.00
Lock Haven -----	8.00	Woodbury -----	3.00
Loganton -----	1.00	York -----	1.00
Middleburg -----	2.00		

### General Budget

14. There shall be an annual General Budget of \$6.00 per member per year: Foreign Missions 35%, Administration 25%, Church Extension 20%, Church Extension Loan Fund 6%, Senior College 10%, Sunday School and Youth 4%, this budget to be raised monthly.

It shall be the responsibility of the pastor and the church board to see that their church raises its portion of the General Budget. It shall be raised as one item under the term "General Budget," and shall be raised monthly.

**Cash Balance to Be Retained by Youth Leaders**

15. WHEREAS, There is a financial inconvenience placed upon Young People's Zone Leaders having insufficient funds to engage a speaker and for advertising purpose,

BE IT RESOLVED, That each Youth Zone Leader be permitted to retain a working balance of \$35.00 throughout the conference year and that said balance be forwarded to his successor.

**District Conference Expense Assessment**

16. RESOLVED, That each church provide the District Conference with no less than \$3.00 each for the pastor and delegate, or delegates, who attend the District Conference, and that all other members of the District Conference be required to pay \$3.00.

---

---

## STANDING RULES

### Conference Bar

1. The first nine rows of seats and forward shall constitute the Conference Bar.

### Time of Sittings

2. Sittings of the District Conference shall be from 9:00 a. m. to 11:30 a. m.; 2:00 p. m. to 4:30 p. m.; and 7:00 p. m. to 9:00 p. m.

### Unfinished Conference Business

3. At the close of the Conference, the District Council shall attend to any business that may have been overlooked, and approve the minutes of the closing sitting.

### Conference Communion Service

4. The first part of the first session of our Annual Conference shall be devoted to observing the sacrament of the Lord's Supper with the presiding officer in charge.

### Committee Appointments

5. The District Superintendent with Council consultation shall appoint all Committees.

### Camp Service for Foreign Missions

6. Thursday afternoon of our District Camp Meeting shall be devoted to the interest of Foreign Missions.

### Superintendent's Vacation

7. The District Superintendent shall have a two weeks vacation annually, with pay.

### Pastors' Vacations

8. The District Conference recommends that each church in the Conference give its pastor a two weeks vacation with pay each year.

### District Trustees

9. The members elected each year to the District Council shall act as the District Trustees.

### Ministerial In Memoriam

10. A picture and a brief sketch of the labors of deceased ministers shall be placed in the Conference Journal.

---

---