

Pittsburgh District  
*Conference Journal*



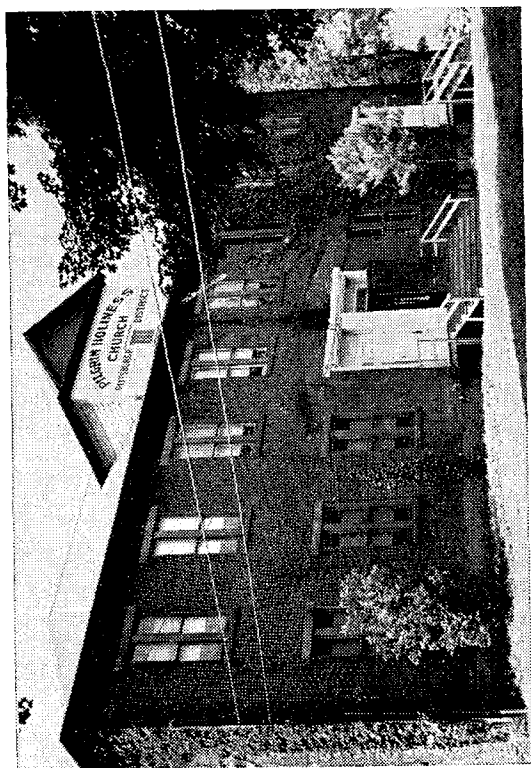
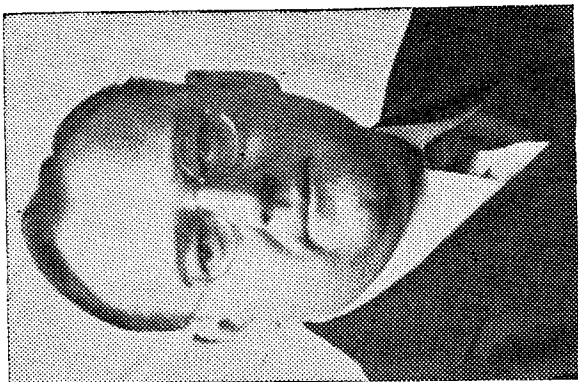
**PILGRIM HOLINESS  
CHURCH**

**1942**

**Official Minutes**

OF THE

**FOURTH ANNUAL SESSION  
MT. PLEASANT  
PENNSYLVANIA**



MINUTES  
OF THE  
Fourth Annual Conference  
OF THE  
Pilgrim Holiness  
Church  
OF THE  
*Pittsburgh District*



HELD AT DISTRICT HEADQUARTERS  
MOUNT PLEASANT, PENNSYLVANIA

JULY 6, 1942

PAUL F. ELLIOTT, MARK H. BOWMAN, ELMER D. JOY, *Editors*  
PRICE THIRTY CENTS PER COPY

# Official Directory

## DISTRICT COUNCIL

|                                |                       |
|--------------------------------|-----------------------|
| District Superintendent .....  | Rev. E. E. Leadingham |
| Assistant Superintendent ..... | Rev. L. W. Drury      |
| District Secretary .....       | Rev. Mark H. Bowman   |
| District Treasurer .....       | Rev. Paul F. Elliott  |
| Advisory .....                 | Rev. C. A. Brown      |
| Advisory .....                 | Rev. G. T. Kutz       |
| Advisory .....                 | Rev. C. E. Wert       |

## HOME MISSIONARY BOARD

Paul F. Elliott, Chairman;      E. E. Leadingham,      Mark H. Bowman,  
Elmer D. Joy, Secretary

## SUNDAY SCHOOL BOARD

Paul F. Elliott, Chairman; Mark H. Bowman, Vice-Chairman; C. A. Brown,  
Secretary; G. T. Kutz, Treasurer.

## BOARD OF EXAMINERS

Paul F. Elliott (1943-1945); C. A. Brown (1942-1944); Mark H. Bowman  
(1941-1943).

## BOARD OF TRUSTEES

E. E. Leadingham, Chairman;      L. W. Drury,      Mark H. Bowman,  
Paul F. Elliott,      C. A. Brown,      G. T. Kutz,      C. E. Wert

## DISTRICT YOUNG PEOPLE'S OFFICERS

|                           |                  |
|---------------------------|------------------|
| District Director .....   | E. E. Leadingham |
| Executive Secretary ..... | Paul F. Elliott  |
| District Treasurer .....  | E. A. Patmore    |

## Zone Representatives

|                     |                 |
|---------------------|-----------------|
| Northern Zone ..... | Forrest B. Gray |
| Southern Zone ..... | Earl Rutherford |

# Ministerial Directory

## ORDAINED

Bowman, Mrs. Mark H. .... 205 Church St., Elizabeth, Penna.  
 Bowman, Mark H. .... 205 Church St., Elizabeth, Penna.  
 Brown, C. A. .... 59 Pasadena St., Mt. Washington, Pittsburgh, Pa.  
 Brown, M. L. .... Clinton, Pennsylvania.  
 Brown, Mrs. M. L. .... Clinton, Pennsylvania.  
 Byers, Samuel A. .... Elizabeth, Pennsylvania, R. D. No. 1.  
 Doll, Armand .... Byrnedale, Pennsylvania.  
 Dettmer, R. C. .... Cipsy, Pennsylvania.  
 Drury, L. W. .... 602 Fourth Ave., W., Warren, Penna.  
 Elliott, Paul F. .... 1908 Grandview Ave., McKeesport, Penna.  
 Felker, Dean .... Bridgeton, Barbados, B. W. I., Box 59.  
 Gray, Forrest B. .... Geneva, Pennsylvania.  
 Haines, Paul E. .... 900 N. Hobart Blvd., Los Angeles, California.  
 Holland, Ira Brown .... Richeyville, Pennsylvania.  
 Kutz, G. T. .... Armbrust, Pennsylvania.  
 Joy, Elmer D. .... Elizabeth, Penna., R. D. No. 1.  
 Joy, Mrs. Elmer D. .... Elizabeth, Penna., R. D. No. 1.  
 Leadingham, E. E. .... Mt. Pleasant, Penna., Box No. 89.  
 Patmore, E. A. .... Josephine, Pennsylvania.  
 Rutherford, Earl .... West Newton, Pennsylvania.  
 Shull, G. H. .... Geneva, Penna., R. D. No. 1.  
 Waldron, Alice .... 909 North St., E., Howell, Michigan.  
 Wert, C. E. .... Strattonville, Pennsylvania.

## LICENSED

Bailey, Mrs. Francis .... Geneva, Pennsylvania.  
 Copeland, William J. .... 222 Butler St., Etna, Pennsylvania.  
 Copeland, Mrs. William J. .... 222 Butler St., Etna, Pennsylvania.  
 Duncan, Clifford A. .... 208 S. Walnut St., New Castle, Pennsylvania.  
 Edmiston, Leon R. .... DuBois, Pennsylvania.  
 Hallam, Wilfred .... 404 Emerson St., Homestead Park, Penna.  
 Henry, Russell B. .... 1115 Henry St., Belle Vernon, Penna.  
 Haluschak, Helen .... Portland, Oregon, care of Cascade College.  
 Jalosky, Andrew .... Elizabeth, Penn., R. D. No. 2.  
 Knupp, Clarence .... 1806 Pennsylvania Ave., W., Warren, Penna.  
 McClure, H. James .... 507 Thropp St., N. S., Pittsburgh, Penna.  
 Pudge, Harold W. .... 909 North St., E., Howell, Michigan.  
 O'Vell, Leon .... Weedville, Pennsylvania, R. D. No. 1.  
 Pope, William .... Oak Hill, Elizabeth, Penna.  
 Stangroom, Oliver .... Webster, Pennsylvania.  
 Tingsley, H. M. .... Geneva, Pennsylvania.  
 Waldron, Edward E. .... 909 North St., E. Howell, Michigan.  
 Walker, Delbert .... Glen Campbell, Penna., R. D. 1.  
 Wheatley, Jack .... 90 Lower Road, Box 7755, Sharpsburg, Penna.

## ORDAINED DEACONESSSES

Doll, Mrs. Armand .... Byrnedale, Pennsylvania.  
 Haines, Mrs. Paul E. .... 900 N. Hobart St., Los Angeles, California.

## LICENSED DEACONESSSES

Clawson, Mrs. Edith .... West Newton, Pennsylvania.  
 Slozat, Miss Margaret .... Espyville Station, Pennsylvania.  
 Sneed, Mrs. Robert .... Williamsport Road, Elizabeth, Pennsylvania.

# *Standing Rules*

## **RULE NO. 1.**

The center tier of seats and platform constitute the Conference bar.

## **RULE NO. 2.**

The District Conference shall convene on Monday following our District Camp, at 9:00 o'clock, and continue until all business is transacted.

## **RULE NO. 3.**

Our fiscal year shall run from June the first to June the first.

## **RULE NO. 4.**

All annual reports shall be sent to the District Statistician. Postmarked no later than two weeks before the Annual Conference. Reports not received on time shall disqualify the pastor a voice in the Conference.

## **RULE NO. 5.**

The District Superintendent shall appoint all committees.

# *Committees for 1942-1943*

ORDINATION: L. W. Sturk, E. E. Leadingham, C. A. Brown, Mark H. Bowman, Paul F. Elliott, Elmer D. Joy.

DISTRICT RESOLUTIONS: C. A. Brown, Chairman; Elmer D. Joy, G. H. Shull, C. E. Wert, E. A. Patmore.

WAYS AND MEANS: L. W. Drury, Chairman; G. T. Kutz, P. F. Elliott, M. L. Brown, Armand Doll.

STATISTICIAN: G. T. Kutz.

AUDITING: S. A. Byers, Genevieve Jeffrey, Mary Curry.

EQUALIZATION OF CARFARE: R. C. Dettmer, Ira Brown Holland, Russell Henry.

ADVERTISING AND EDITING: Paul F. Elliott, Mark H. Bowman, Elmer D. Joy.

RECEPTION: F. B. Gray, Earl Rutherford.

MEMOIRS: Mrs. M. L. Brown, Mrs. P. F. Elliott, Mrs. Alice Waldron, Mrs. W. J. Copeland.

# Church Directory

## ARMBRUST

Location .....Armbrust, Pennsylvania.  
Pastor .....G. T. Kutz, Armbrust, Pennsylvania.  
Secretary .....Mrs. Paul Kunkle, 407 S. Fifth St., Youngwood, Pa.  
Treasurer .....Mr. Lloyd Simpson, Sr., R.D. 2, Greenburg, Pa.  
S. S. Supt.....Mr. Wm. Lauffer, R. D. 2, Greenburg, Pa.  
Y. P. Pres.....Miss Genevieve Jeffrey, Armbrust, Pa.

## BELLEBRIDGE

Location .....Bellebridge, Pa. (Elizabeth-Glassport Road).  
Pastor .....Rev. E. D. Joy, R. D. 1, Elizabeth, Pa.  
Secretary .....Mrs. Edith Finnev, R. 1, Elizabeth, Pa.  
Treasurer .....Mr. W. Stevick, R. D. 1, Elizabeth, Pa.  
Y. P. Pres.....Miss Bertha Joy, R. D. 1, Elizabeth, Pa.  
S. S. Supt.....Mrs. Elmer Joy, R. D. 1, Elizabeth, Pa.

## BENTLEYVILLE

Location .....Bentleyville, Pennsylvania.  
Pastor .....Rev. Ira Brown Holland, Richeyville, Pa.  
Secretary .....Elizabeth Chester, Bentleyville, Pa.  
Treasurer .....Mrs. Ruby Williams, Eighty Four, R. D. 1.  
S. S. Supt.....Gunard Jarvis, Finleyville, Pa.  
Y. P. Pres.....

## BYRNEDALE

Location .....Byrnedale, Pennsylvania.  
Pastor .....Rev. Armand Doll, Byrnedale, Pa.  
S. S. Supt.....Mrs. Harry Hellburg, Byrnedale, Pa.  
Secretary .....Rev. Leon O'Vell, R. D. 1, Weedville, Pa.  
Treasurer .....Mr. E. F. O'Vell, R. D. 1, Weedville, Pa.  
Ch'man Miss. So...Mr. E. F. O'Vell, R. D. 1, Weedville, Pa.  
Y. P. Pres.....Lewis Burch, Byrnedale, Pa.

## CLINTON

Location .....Clinton, Pennsylvania.  
Pastor .....Rev. M. L. Brown, Clinton, Box 73; Tel. Imperial 4569.  
S. S. Supt. ....Mrs. John Andrews, Clinton, Box 83  
Secretary .....Jackson Secrest, 129 Temple St., Aliquippa, Pa.  
Treasurer .....Mr. Fred Eaton, Clinton, R. 1.  
Ch'man Miss. So...Mrs. J. Andrews, Clinton, Box 83.  
Y. P. Pres.....Rev. Mrs. M. Brown, Clinton, Box 73.

## CLYMER

Location .....Clymer, Pennsylvania.  
Pastor .....Rev. R. C. Dettmer.  
S. S. Supt. ....  
Secretary .....  
Treasurer .....Jay Clark.  
Ch'man Miss. So...

## DONORA

Location .....Donora, Pennsylvania.  
Pastor .....Rev. S. A. Byers, R. D. 1, Elizabeth, Pa.  
Phone McKeesport 2-9352.  
S. S. Supt. ....Samuel Martin, Webster, Pa.  
Secretary .....Howard Harrison, R. D. 1, Belle Vernon, Pa.  
Treasurer .....W. C. Smith, Box 786, Webster, Pa.  
Ch'man Miss. So...Mrs. Minnie Kinnear, R. D. 1, Monongahela, Pa.  
Y. P. Pres.....Howard Harrison, R. D. 1, Belle Venon, Pa.

## ELIZABETH

Location .....Elizabeth, Pennsylvania.  
Pastor .....Rev. M. H. Bowman, 205 Church St., Elizabeth, Pa.;  
Phone Elizabeth 175-R.  
S. S. Supt. ....John Huffman, Elizabeth, Pa., Box 12.  
Secretary .....Mr. Irvin Kettering, W. Elizabeth, Pa.  
Treasurer .....Mr. Geo. Lewis, W. Elizabeth, Pa.  
Ch'man Miss. So...Mrs. C. McKnight, Cemetery St., Elizabeth, Pa.  
Y. P. Pres.....Mrs. M. H. Bowman, 205 Church St., Elizabeth, Pa.

## GENEVA

Location .....Geneva, Pennsylvania.  
Pastor .....Rev. F. B. Gray, Geneva, Pa.  
S. S. Supt. ....John Slozat, Linesville, Pa., R. D.  
Secretary .....Margaret Slozat, Geneva, Pa.  
Treasurer .....Richard Craig, Espyville Station, Pa.  
Ch'man Miss. So...Frances Slozat, Geneva, Pa.  
Y. P. Pres.....Mrs. F. B. Gray, Geneva, Pa.

## GIPSY

Location .....Gipsy, Pennsylvania.  
Pastor .....Rev. R. C. Dettmer, Gipsy, Pa.  
S. S. Supt. ....R. G. Connor, Gipsy, Pa.  
Secretary .....Esther Smith, Glen Campbell, Pa., R. D. 1.  
Treasurer .....Annie Hamilton, Gipsy, Pa.  
Ch'man Miss. So...Bessie Lowman, Gipsy, Pa.  
Y. P. Pres.....Mrs. R. C. Dettmer, Gipsy, Pa.

## HOMESTEAD PARK

Location .....Emerson Street, Homestead Park, Pennsylvania.  
Pastor .....Rev. Wilfred Hallam, Emerson St., Homestead  
Park, Pa.; Phone Homestead 6375.  
S. S. Supt. ....Mrs. Wilfred Hallam, Emerson St., Homestead Park.  
Secretary .....S. H. Kerns, Lincoln Place, Pa.

## JOSEPHINE

Location .....Josephine, Pennsylvania.  
Pastor .....Rev. E. A. Patmore, Josephine, Pa., Box 87.  
S. S. Supt. ....Paul Williams, Black Lick, Pa.  
Secretary .....Mrs. Elizabeth Williams, Josephine, Pa.  
Treasurer .....Paul Williams, Black Lick, Pa.



## **McKEESPORT**

Location .....1910 Grandview, McKeesport, Pennsylvania.  
Pastor .....Rev. P. F. Elliott, 1908 Grandview, McKeesport, Pa.  
S. S. Supt. ....Robert Walker, Jr., 3300 O'Dair St., McKeesport, Pa.  
Secretary .....E. W. Curry, 108 Thomas St., E. McKeesport, Pa.  
Treasurer .....Mrs. Martha Campbell, James St., Turtle Creek, Pa.  
Ch'man Miss. So...Mrs. Ed. Curry, 108 Thomas St., E. McKeesport, Pa.

## **NEW CASTLE**

Location .....New Castle, Pennsylvania.  
Pastor .....Rev. Jack Campbell, New Castle, Pa.  
S. S. Supt. ....John M. Homner, Box 12, New Bedford, Pa.  
Secretary .....Mrs. Eugene Burford, 408 Conner Ave., New Castle.  
Treasurer .....Daniel Seal, Jr., 509 Court St., New Castle, Pa.  
Ch'man Miss. So...Mrs. Jane Eardley, 329 Nesh Ave., New Castle, Pa.  
Y. P. Pres.....

## **PITTSBURGH**

Location .....Pittsburgh, Pa., (Bailey and Beltzhoover Aves.)  
Pastor .....Rev. Charles Brown, 59 Pasadena Street,  
Mt. Washington, Pittsburgh, Pa.;  
Phone Everglade 6094.  
S. S. Supt. ....Miss Bertha Brooks, 81 Wyoming St., Pittsburgh, Pa.  
Secretary .....W. H. Reith, R. 25, Craighead St., Pittsburgh, Pa.  
Treasurer .....W. H. Reith, R. 25, Craighead St., Pittsburgh, Pa.  
Y. P. Pres.....Miss Anna Reith, R. 25, Craighead St., Pittsburgh.

## **RICHEYVILLE**

Location .....Richeyville, Pennsylvania.  
Pastor .....Rev. Ira Brown Holland, Richeyville, Pa.  
S. S. Supt. ....Frances Moffatt, Daisytown, Pa., R. D. 1.  
Secretary .....Gayle Salisbury, Coal Center, Pa., R. D. 1.  
Treasurer .....Anna Lash, Daisytown, Pa., R. D. 1.

## **SHANER**

Location .....Shaner, Pennsylvania.  
Pastor .....Rev. E. S. Rutherford, West Newton, Pa.  
S. S. Supt. ....E. S. Rutherford.  
Secretary .....Betty Reitler, Irwin, Pa.  
Treasurer .....Christine Fellabaum, Irwin, Pa.

## **STRATTONVILLE**

Location .....Strattonville, Pennsylvania.  
Pastor .....Rev. C. E. Wert, Strattonville, Pa.  
S. S. Supt. ....Floyd McMullen, Star Route, Strattonville, Pa.  
Secretary .....  
Treasurer .....  
Ch'man Miss. So...  
Y. P. Pres.....

## WARREN

Location .....Warren, Pennsylvania, (602 Fourth Avenue W.)  
 Pastor .....Rev. L. W. Drury, 602 Fourth Ave. W., Warren, Pa.  
 S. S. Supt. ....S. F. Sturgis, Penna. Ave., Warren, Pa.  
 Secretary .....Mrs. Irene Bines, Mohawk Ave., Warren, Pa.  
 Treasurer .....Mr. Clarence Knupp, 1806 Penna. Ave., Warren, Pa.  
 Ch'man Miss. So...Mrs. L. W. Drury, 602 Fourth Ave. W., Warren, Pa.  
 Y. P. Pres.....Melvin Bines, Mohawk Ave., Warren, Pa.

## WEST NEWTON

Location .....West Newton, Pennsylvania.  
 Pastor .....Rev. E. S. Rutherford, West Newton, Pa.  
 S. S. Supt. ....Oral Houseman, Belle Vernon, Pa.  
 Secretary .....Mrs. Pearl Porter, West Newton, Pa.  
 Treasurer .....George Hagerty, Jr., West Newton, Pa.  
 Ch'man. Miss. So...Mrs. Edith Clawson, West Newton, Pa.  
 Y. P. Pres.....Myrtle Gilchrist, Lowber, Pa.

## CHURCH DELEGATES

|                      |                      |
|----------------------|----------------------|
| Armbrust .....       | Kenneth Davis        |
| Belle Bridge .....   | Mrs. Sarah Grant     |
| Bentleyville .....   | Mrs. Eimer Watterson |
| Byrnedale .....      | No Delegate          |
| Clinton .....        | William Young        |
| Clymer .....         | No Delegate          |
| Donora .....         | Mrs. Minnie Kinnear  |
| Elizabeth .....      | Walter Drury         |
| Geneva .....         | Ellis Burchfield     |
| Gipsy .....          | Annie Hamilton       |
| Homestead Park ..... | No Delegate          |
| Josephine .....      | Laura Mae Jones      |
| McKeesport .....     | Mrs. Ed. Curry       |
|                      | Miss Doris Walker    |
| New Castle .....     | Mrs. Clifford Duncan |
| Pittsburgh .....     | No Delegate          |
| Richeyville .....    | Miss Frances Moffitt |
| Shaner .....         | No Delegate          |
| Strattonville .....  | Andrew Jalosky       |
| Warren .....         | Mrs. L. P. Hunter    |
| West Newton .....    | Mrs. Belle Harvey    |

## *District Superintendent's Report*

To the Fourth Annual Conference of the Pilgrim Holiness Church,  
Pittsburgh District. Greetings!

Once again this side of the judgment and eternity our District Conference has convened. This has by no means been an easy year, there have been many burdens to carry and problems to solve, but the toils, trials, battles and victories of the past year are now history. The curtains of our conference year have fallen. Whatever has been accomplished for God has been properly recorded in heaven; for He who numbers the hairs of our head and rewards for a cup of water given in His name will surely recompense every servant for faithful service rendered.

Due to the fact that there was so much work to do on our camp ground last year, I was unable to give the churches proper attention, therefore it was necessary to devote considerable amount of my time and attention to the Churches after our last Conference. A number of the Churches were without pastors, but after praying much and earnestly seeking Divine guidance and making several extra visits to some of the Churches, the Lord helped us to secure a good pastor for each Church.

Immediately after each pulpit was supplied with a pastor we launched a Home Missionary campaign at Reynoldsville. This meeting continued for about five weeks. I looked after this work from October 1 to January, at which time we stationed a pastor there and organized a Sunday School. The record attendance of the Sunday School was sixty-five.

A lovely basement church has been built at Donora and Homestead Park. The building at Donora is valued at \$7,500 and they have seven Sunday School rooms. The church at Homestead Park is valued at \$8,000. Both of these Churches are to be commended for the splendid buildings they have erected. The church building at Clymer has been completed and valued at \$2,000.00. These buildings are to be dedicated in the near future. A church building is under construction at Gipsv. We have seen signs of progress on various lines in a goodly number of the Churches in our District. Some of the Sunday Schools have been growing rapidly, for which we are indeed grateful.

We have not given the organized Churches a great deal of attention this year, however we have made two visits to each of them. We have devoted as much time as we could to Home Missions.

I have preached 164 sermons and have given several addresses in the interest of Home Missions and the Allentown Bible Institute. (Raising money for the new school building). Have conducted five Home Missionary meetings, and the sixth was scheduled, but because of my wife's serious illness I was unable to hold it. Have conducted two revival meetings. The offerings from these meetings were turned in to the District Treasurer. Two hundred and forty-one individuals have sought God at the altars of prayer for regeneration or sanctification. Conducted 16 District Council meetings or Committee meetings; 25 business meetings, 14 annual business meetings, making a total of 39 business meetings. Anointed and prayed with 11 for Divine healing, conducted four communion services, conducted one quarterly conference, one Ministerial Convention, one camp meeting, dedicated one church, directed the work on the camp ground, and spent two weeks in actual labor on the grounds and buildings. Published nine monthly Sunday School bulletins. Have written four general letters to the pastors, and three circular letters in the interest of the Home Missionary work. Through the cooperation of the pastors have raised \$306.97 for District Home Missions to start off the missionary activities this summer. Organized one Church. Attended one Young People's Rally; two General Board meetings; two Bible School Board Meetings in Allentown and the General Conference. Have traveled in the interest of the District, 10,243

miles, received \$305.01 for traveling expenses; \$36.93 for stamps and telegrams, etc. Have received my salary in full and \$67.00 in donations.

Some splendid Vacation Bible Schools have been held already this summer and others are scheduled for the future.

An extensive Home Missionary program has been planned for the summer and fall.

I have labored as faithfully for every interest of the District and the up-building of the kingdom of God as I could, and have given my best to God and the Church.

Humbly submitted, E. E. LEADINGHAM.

## *Treasurer's Report*

June 15, 1941 ..... June 15, 1942

### RECEIPTS

|   |                   |                    |
|---|-------------------|--------------------|
| By balance brought forward (Dist. Funds).....\$       | 303.39            |                    |
| By balance brought forward (Camp Funds) .....         | 4.00              |                    |
| By Foreign Missions (Specified) .....                 | 886.14            |                    |
| By General Budget .....                               | 1,737.52          |                    |
| By Church Offering for Supt. ....                     | 403.53            |                    |
| By District Minutes .....                             | 63.81             |                    |
| By Pastor's Tithes (75 per cent) .....                | 1,206.41          |                    |
| By Dist. Expense (10 per cent) .....                  | 1,736.20          |                    |
| By Bible School .....                                 | 295.32            |                    |
| By Dist. Home Missions (255.61 from Dist.) .....      | 492.79            |                    |
| By Ministerial Tithe .....                            | 546.43            |                    |
| By Gen. Assem. Sinking Fund (255.61 from Dist.) ..... | 255.61            |                    |
| By Gen. Home Miss. (specified) .....                  | 274.71            |                    |
| By Sunday School .....                                |                   |                    |
| By Beulah Home .....                                  | 69.80             |                    |
| <b>TOTAL RECEIPTS .....</b>                           | <b>\$8,275.66</b> |                    |
| <b>CAMP RECEIPTS .....</b>                            | <b>4,136.58</b>   | <b>\$12,412.24</b> |

### DISBURSEMENTS

|  |                    |                    |
|--|--------------------|--------------------|
| Foreign Missions (Specified) .....                 | \$ 886.14          |                    |
| General Budget .....                               | 1,723.71           |                    |
| General Home Missions (Specified) .....            | 274.71             |                    |
| Beulah Rescue Home .....                           | 64.57              |                    |
| Allentown Bible Institute .....                    | 295.32             |                    |
| Dist. Supt. (Salary) .....                         | 1,430.00           |                    |
| Dist. Supt. (Rent of House) .....                  | 360.00             |                    |
| Dist. Supt. (Expense) .....                        | 358.56             |                    |
| Dist. Camp Meeting .....                           | 4,381.23           |                    |
| Dist. Minutes .....                                | 63.81              |                    |
| Dist. Home Missions .....                          | 435.55             |                    |
| Dist. Misc. Expense .....                          | 411.23             |                    |
| General Assembly .....                             | 201.52             |                    |
| Transfer of Funds (30 per cent of Dist. Budget) .. | 511.23             |                    |
| <b>TOTAL DISBURSEMENTS .....</b>                   | <b>\$11,397.58</b> | <b>\$11,397.58</b> |
| <b>BALANCE .....</b>                               |                    | <b>\$1,014.66</b>  |

Respectfully submitted, PAUL F. ELLIOTT.

# Proceedings

## FIRST DAY—MONDAY, JULY 6, 1942—MORNING SESSION

The fourth annual session of the Pittsburgh District Conference opened July 6, at 9:00 a. m., following our District Camp Meeting, at our District Headquarters located at Mt. Pleasant, Pennsylvania. The Rev. Robert Dettmer led the Conference in singing, "What a Friend We Have in Jesus", after which we were led in prayer by the Rev. S. A. Byers, and the Rev. Emer D. Joy.

The Rev. E. E. Leadingham introduced our Assistant General Superintendent, the Rev. L. W. Sturk, who took the chair.

The Rev. L. W. Sturk read a Scripture lesson from Psalm 84 and gave us a very instructive and inspirational message.

The roll of ministers, licensed workers, and of lay delegates was called.

Moved and seconded that Mrs. Clifford Duncan be approved as a delegate from the New Castle Church in the absence of their delegate and alternate.

The Church at Strattonville was presented by the District Superintendent and by motion was received into the District.

The transfer of membership of the Rev. Earl Rutherford from the Ohio District to the Pittsburgh District was read by the Secretary.

Moved and seconded that the Rev. Earl Rutherford be received into the Pittsburgh Conference. Carried.

The transfer of membership of the Rev. and Mrs. Marshall Brown from the Kentucky District to the Pittsburgh District was read by the Secretary.

By motion they were received into the District.

The transfer of membership of the Rev. Armand Doll from the Pennsylvania and New Jersey District, to the Pittsburgh District was read by the Secretary.

He was received by motion.

The transfer of membership of Mrs. Armand Doll from the Pennsylvania and New Jersey District to the Pittsburgh District was read by the Secretary.

Moved and seconded that we receive her into the District. Carried.

Moved and seconded that we receive the Rev. and Mrs. Elmer D. Joy into our District, coming to us from the New York District. Both are ordained ministers. Carried.

The Reception Committee presented the following: Sr's Lorene Crowder and Edith Myers from the Indiana District. The Rev. L. Neff, Ann Arbor, Mich.; Rev. Emil Shetler, Ann Arbor, Mich.; and the Rev. Russell Gunsalus of the Allentown Bible Institute. They were heartily received and given an honorary seat in the Conference bar, with the privilege of the floor. Carried.

The Reception Committee also presented the Rev. Mel Thomas Rothwell. He was heartily received and was given an honorary seat, and privilege of the floor.

At this time we were favored with a special message in song by Sr's Crowder and Meyers.

By motion the following hours were set for the Conference: 9:00 to 12:00 a. m., 1:30 to 4:30, and 6:30.

The Auditing Committee reported on the books of the District Treasurer. The report was accepted by motion. Carried.

The District Treasurer's report was read and accepted by motion. Carried.

The District Superintendent, the Rev. E. E. Leadingham, read his splendid report. It was received by a hearty Amen.

The Resolution Committee read their report.

Resolutions No. 1 was adopted.

Resolutions No. 2 was lost.

By common consent Bro. and Sr. Shetler were asked to bring us a special song in the first part of the afternoon session.

We recessed.

Dismissal prayer was offered by the Rev. L. W. Sturk.

## AFTERNOON SESSION

The afternoon session was opened at 1:30 p. m. The Rev. Armand Doll led the Conference by singing, "Every Day and Every Hour". We were then led in prayer by the Rev. C. A. Brown. We were then favored by a special message in song by Bro. and Sr. Shetler.

The Rev. Russell Gunsalus spoke to us concerning the interest of Allentown Bible Institute. He extended official greetings to the Conference. He also gave us a very encouraging report of the advance step taken there.

The Ways and Means Committee reported on Resolution No. 1, 2, and 3.

Resolution No. 1—adopted.

Resolution No. 2—adopted.

Resolution No. 3—was adopted as amended that it read two additional members elected by the Conference instead of three. It was further amended that the District Superintendent shall be a member of this Home Missionary Board.

The District Secretary presented a matter relative to the election of a District Superintendent which came recommended by a joint session of the Council, Resolution Committee, and the Ways and Means Committee, listed as No. 4 under Ways and Means Committee and No. 4 under Resolution Committee.

Resolution No. 4—adopted.

Resolution No. 5—adopted.

Resolution No. 6—adopted.

Motion carried that we have the election of officers at this time.

By motion four tellers were appointed.

The Conference then entered into a short season of earnest prayer in preparation for the election.

In the election of the District Superintendent the Rev. E. E. Leadingham received 29 votes out of 33 ballots cast.

The Rev. E. E. Leadingham expressed his appreciation for the vote of confidence manifested, and pledged his best to the District.

A ballot was cast for the election of the Assistant District Superintendent. There was no election on the first and second ballots. The third ballot was cast and the Rev. L. W. Drury was elected.

The next ballot was cast for our District Secretary, electing the Rev. M. H. Bowman, receiving 33 of the 35 ballots cast.

By motion we accepted the nomination of the District Council, naming the Rev. P. F. Elliott as the District Treasurer, who was acclaimed as Treasurer by the Conference.

Moved and seconded that we vote for the three Advisory Members of the Council on one ballot. Carried.

The Advisory Members elected are: The Rev. Given Kutz, the Rev. C. A. Brown, and the Rev. C. E. Wert.

We recessed by motion.

The Conference was asked to stand and sing, "What a Friend We Have in Jesus".

Prayer of dismissal by the Rev. E. E. Leadingham.

## EVENING SESSION

The evening session opened with the Rev. Armand Doll leading the Conference in singing, "Near the Cross".

We were led in prayer by Bro. Holland and Bro. Gunsalus.

The Roll of Ministers, Licensed Workers, and of Lay Delegates was called.

The District Secretary read the recommendation of the District Council as to their nominee for the vacancy on the Examining Board, naming Paul F. Elliott.

Moved and seconded that we accept the nomination of the Council to fill the vacancy of the Examining Board, and acclaim him elected. Carried.

Moved and seconded that the District Council serve as Trustees for the coming year. Carried.

A ballot was cast to elect the two members of the Home Missionary Board, there being no election on the first ballot, the second ballot was cast and resulted in the election of Emer D. Joy and Mark Bowman.

The District Council recommended the following for ordination: Forrest B. Gray, Earl Rutherford, Samuel A. Byers, R. C. Dettmer, and Dean Felker.

Moved and seconded that these brethren be ordained by this Conference. Carried.

The District Council further recommended the following for renewal of District Licenses: Mrs. Francis Bailey, Mr. and Mrs. William Copeland, Clifford L. Duncan, Leon R. Edmiston, Wilfred Hallam, Russell Henry, Helen Haluschak, Clarence Knupp, H. James McClure, Harold W. Pudge, Leon O'Veil, William Pope, Oliver Stangroom, Edward J. Waldron, H.M. Tingsley, Jack Wheatley.

It was moved and seconded that these renewals be granted. Carried.

The District Council further recommended Andrew Jalosky for a new District License.

It was moved and seconded that he be granted the District License. Carried.

The District Council further recommended the following for the renewal of Deaconess Licenses: Mrs. Edith Clawson, Miss Margaret Slozat, Mrs. Robert Sneed.

By motion these recommendations were passed upon.

Moved and seconded that we reconsider Resolution No. 6. Carried.

By motion it was amended to change the wording of "District Conference" to District "Council".

Moved and seconded that we have the Ordination Service at the close of this session. Carried.

The District Statistician gave us the totals of the Statistical Report.

Moved and seconded that we accept the Statistical Report. Carried.

The District Superintendent appointed the following Committees:  
Resolutions: C. A. Brown, Elmer D. Joy, G. H. Shull, C. E. Wert, E. A. Patmore.

Ways and Means: L. W. Drury, G. T. Kutz, P. F. Elliott, M. L. Brown, Armand Doll.

Auditing: S. A. Byers, Genevieve Jeffrey, Mary Curry.

Equalization of Carfare: R. C. Dettmer, Ira Brown Holland, Russell Henry.

Advertising and Editing: Paul F. Elliott, Mark H. Bowman, Elmer D. Joy.

Reception: F. B. Gray, Earl Rutherford.

Memoirs: Mrs. M. L. Brown, Mrs. P. F. Elliott, Mrs. Alice Waldron, Mrs. W. J. Copeland.

Statistician: G. T. Kutz.

The Ways and Means Committee reported on Resolution No. 5.

The Resolution Committee reported on Resolutions 7, 8, 9, 10.

Resolution No. 7 was adopted.

Resolution No. 8 was adopted.

Resolution No. 9 was adopted.

Resolution No. 10 was adopted.

The minutes of the morning and afternoon session were read and approved.

The Committee appointed by the District Council to draw up plans for the tabernacle reported to the Conference, showing their plans.

Motion carried that we give the Committee who drew up the plans for the tabernacle a vote of thanks.

Moved and seconded that the District Council take care of all the unfinished business of the Conference. Carried.

Moved and seconded that the minutes of the evening sitting be reviewed and passed upon by the District Council. Carried.

There being no other business, we proceeded with the ordination service. An impressive ordination service was then entered upon.

Ordination Council consisting of the Rev. E. E. Leadingham, the Rev. C. A. Brown, the Rev. Mark H. Bowman, the Rev. Paul F. Elliott, and the Rev. Elmer D. Joy. The Assistant General Superintendent, the Rev. L. W. Sturk, officiated. Service opened with singing, "A Charge To Keep I Have". The Reverends E. E. Leadingham, C. A. Brown, and Paul F. Elliott, read Scriptures. Prayer was offered by the Rev. Elmer D. Joy. Message given by the Rev. L. W. Sturk. The four candidates for ordination were then ordained. Service closed with the gracious presence of the Lord in our midst.

We were dismissed with prayer by the Rev. L. W. Sturk.

(Signed): MARK H. BOWMAN, Secretary.



## *Standing Resolutions*

1. WHEREAS, there has been considerable difficulty in operating the kitchen and dining room with help supplied by the present plan,

RESOLVED that we give free entertainment to a number (not to exceed twenty) of capable young people between the ages of 16-25 who are willing to do this work.

2. WHEREAS, our District Minutes have been unsatisfactory,

RESOLVED that our minutes be printed instead of mimeographed.

3. RESOLVED that no pastor shall be permitted to plan or hold a tent meeting, vacation Bible School, or revival during the time set for the Annual District Camp and Conference within the bounds of the District without the consent of the District Council, provided the camp is announced once a year in advance.

4. RESOLVED, that the District Council be authorized to appoint trustees to receive the title to property in missions where property will be involved before the organization of a church.

5. WHEREAS, there have been no standardized requirements for our applicants for District License and Ordination,

BE IT RESOLVED, that the District Council formulate a set of rules and questions to be used by the Examining Board to determine the eligibility of the applicant.

BE IT FURTHER RESOLVED, that all licensiates take their course of study through the Allentown Bible Institute which is our zone school, or meet the equivalent to that in the Manual.

6. RESOLVED, that each preacher be required to attend the District Camp, and that the Camp furnish free entertainment for actively engaged pastors and their families, and that the Superintendent be requested to instruct our people that the pastor's salary should continue during this time. Licensed ministers and licensed deaconesses shall also receive free entertainment.

7. BE IT RESOLVED that all pastors be required to attend our Ministerial Convention. Upon failure to be present a written reason must be given.

8. RESOLVED, that the District Council be empowered to secure a permanent camp ground and to erect suitable buildings.

9. RESOLVED, that each local church and pastor endeavor to start at least one new work each year.

10. RESOLVED, inasmuch as it is the pastor's duty to raise church finances, and

WHEREAS, it usually works great hardship on a pastor to raise salary in arrears for a former pastor in a Church, wherein said former pastor was unable to raise his own, therefore,

BE IT RESOLVED, that no pastor after his leaving a charge press that Church beyond that which is expedient to the financial stability of that former charge.

**RESOLUTIONS**  
**ADOPTED 1942 CONFERENCE**

1. WHEREAS, our General Church requests that all Districts and Churches use the report blanks prepared and sold by our Publishing House,

BE IT RESOLVED, that we use that form and also that the District Statistician use forms recommended by the General Conference.

2. RESOLVED, that standing Rule No. 2 be changed to read that we convene the third Tuesday morning at 9:00 a. m. of the month of August and continue until all business is transacted. (Lost.)

BE IT FURTHER RESOLVED that standing Rule No. 3 be changed to read, that our Church year shall run from August 1st to August 1st, with the exception of this year which will, if adopted, be a 14-month year. (Lost.)

3. WHEREAS, our District was organized with the sole purpose of doing extensive Home Missionary Work:

BE IT RESOLVED, that we have a Home Missionary Board composed of the District Treasurer as chairman, inasmuch as he will know the financial status; the District Superintendent, and two other members elected by the District Conference. Their duties shall be as follows:

To promote extensive Home Missionary activities in our District.

To investigate the prospects of new fields.

To place workers where they deem it advisable, and as far as the District Home Missionary Funds will permit.

4. BE IT RESOLVED, that the District Superintendent give one-half of his time in supervising the work of the Church in the District; visiting the Churches twice each year and preparing for the annual camp meeting and supervising same together with work incidental to the office.

He shall be free to engage in evangelistic work in the General Church during the other six months of this year.

BE IT FURTHER RESOLVED, that all money received by him from church visitation in the District be applied and become a part of his salary.

BE IT FURTHER RESOLVED, that the District Superintendent shall receive for his services the equivalent of the sum of \$60.00 per month, beginning August 1, 1942.

BE IT FURTHER RESOLVED, that the District Superintendent pay one-third of his house rent to the District.

BE IT FURTHER RESOLVED, that the District pay him three (3) cents per mile for traveling expenses while serving the District, and that we pay for his telegrams, telephone, and postage, stationery and supplies, fuel and water.

5. BE IT RESOLVED, that the District Treasurer be bonded and that the matter of bonding be left in the hands of the District Council.

6. BE IT RESOLVED, that the District Council elect a Sunday School Board of four including the Sunday School director. The duties of the District Sunday School Board in harmony with the Manual of the Pilgrim Holiness Church shall be as follows:

1. The District Sunday School Board shall arrange for an annual Sunday School Convention to be held some time during the year.

2. To promote and encourage the Sunday School work throughout the District.

3. To present an annual report to the District Conference which shall include the following:

a. A statement of the work accomplished during the year.

b. A statement of the general condition of the Sunday School work on the District.

c. To recommend to the District Conference through the Ways and Means Committee the amount considered necessary to finance the District Sunday School Work.

4. The District Sunday School Board shall be amenable to the District Council.

5. The District Council shall have the right to remove or cause to be removed any member of the District Sunday School Board who in the judgment of such Council, is not in harmony with the teaching of the Manual of the Pilgrim Holiness Church.

6. If for any reason there is a vacancy on the District Sunday School Board, the District Council by a majority vote, may fill the vacancy.

7. WHEREAS, so many reports have been sent to the Statistician after the date set:

BE IT RESOLVED, that we add to Standing Rule No. 4 reports not received on time shall disqualify the pastor a voice in the Conference.

8. Inasmuch as we offer no course of study to our licentiates and we advise them to take their work through Allentown Bible Institute,

BE IT RESOLVED, that they ask the head of the Correspondence Department for transcript of credits at the end of each school year and send it to the Board of Examiners.

9. WHEREAS, our beloved Assistant General Superintendent, the Rev. L. W. Sturk, has so graciously and ably presided over our Conference,

BE IT RESOLVED, that we show our appreciation by a rising vote of thanks.

10. BE IT RESOLVED, that the pastors give two days instead of one in getting ready for the District Camp.

## *Ways and Means Committee Report*

1. RESOLVED that each Church pay \$2.00 for the delegate and \$2.00 for the pastor to help defray expenses for entertainment, said amount to be paid if delegate is present or not.

2. WHEREAS permanent living quarters have been provided for our District Superintendent at our District Camp Ground,

RESOLVED that the Superintendent live in these quarters and that the District pay \$30.00 a month to the Camp Meeting account for his rent.

3. RESOLVED that each organized Church send to the District Treasurer the sum of \$5.00 to help defray the expenses of entertainment of pastor and family at the District Camp.

FURTHER RESOLVED if this is not complied with that the pastor and family pay full price at the Camp.

4. RESOLVED that whenever the District Superintendent visits the Church, the pastor take a special offering to be applied on his salary.

5. BE IT RESOLVED that we require our ministers actively engaged to pay 75 per cent of their tithes received from ministerial work, through the local treasurer to the District Treasurer.

6. BE IT FURTHER RESOLVED that all ordained or licensed ministers doing secular work pay fifty-per cent of their tithe from such labors through the local Church treasurer to the District Treasurer and

BE IT FURTHER RESOLVED that all local preachers and deaconesses pay \$1.00 per quarter through our local Church treasurer to the District Treasurer for the support of the District Superintendent and that the District Council be empowered to make adjustments when necessary.

7. BE IT RESOLVED that the equalization of carfare be one and one-half cents per mile.

8. BE IT RESOLVED that the District Council be authorized to secure Public Liability and Property Damage Insurance for the District Superintendent's car.

9. BE IT RESOLVED that the District Council be empowered to provide financial assistance to our needy pastors as they may deem it advisable, the same to be taken from the District Budget.

## WAYS AND MEANS COMMITTEE REPORT

### ADOPTED AT 1942 CONFERENCE

1. WHEREAS, there is much labor and time involved in carrying out the duties of the office of District Secretary, and the District Treasurer, and the District Statistician,

BE IT RESOLVED, that we pay twenty-five dollars to the District Secretary; thirty-five dollars to the District Treasurer, and ten dollars to the District Statistician, as a yearly salary.

2. WHEREAS, our Church teaches that all our members tithe to the local Church,

BE IT RESOLVED, that we ask our Churches to tithe to the District their total Church receipts, excepting General Budget, Special Offerings for District purposes, Foreign Missions, money for indebtedness, building fund,

Sunday School and Young People's Society's funds, pastors' tithe and ministerial tithe, same to be paid monthly through the local Church treasurer to be apportioned as follows:

|                   |                             |
|-------------------|-----------------------------|
| 45 per cent. .... | Home Missions               |
| 50 per cent. .... | Dist. Expense               |
| 5 per cent. ....  | Gen. Conference Sink'g Fund |

And that the money be divided accordingly by the District Treasurer.

3. BE IT RESOLVED that the General Budget and Foreign Missionary apportionments be as set by this Conference, as follows: Armbrust—\$200, Belle Bridge—130, Bentleyville—30, Byrnedale—100, Clinton—85, Clymer—25, Donora—120, Elizabeth—150, Geneva—25, Gipsy—25, Homestead Park—50, Josephine—25, McKeesport—200, New Castle—50, Pittsburgh—185, Richeyville—25, Shaner—25, Strattonville—12, Warren—175, West Newton—35. Total—\$1,672.00.

4. BE IT RESOLVED, that the District Superintendent give one-half of his time in supervising the work of the Church in the District; visiting the Churches twice each year and preparing for the annual Camp Meeting and supervising same together with work incidental to the office.

He shall be free to engage in evangelistic work in the General Church during the other six months of this year.

BE IT FURTHER RESOLVED, that all money received by him from Church visitation in the District be applied to and become a part of his salary.

BE IT FURTHER RESOLVED, that the District Superintendent shall receive for his services the equivalent of the sum of \$60.00 per month, beginning August 1, 1942.

BE IT FURTHER RESOLVED, that the District Superintendent pay one-third of his house rent to the District.

BE IT FURTHER RESOLVED, that the District pay him three (3) cents per mile for traveling expenses while serving the District, and that we pay for his telegrams, telephone and postage, stationery and supplies, fuel and water.

### WHERE, HOW AND WHEN TO SEND MONEY

Send all funds such as pastor's tithes, offerings for District expenses, General Budget and Missionary money to Rev. Paul F. Elliott, 1908 Grandview Ave., McKeesport, Pa.

Use the forms provided by the District Treasurer and mail them in the envelopes provided with proper address. All monies should reach him the 10th of each month. Make checks and money orders payable to Rev. Paul F. Elliott, Treasurer. NEVER SEND CASH.

### GENERAL BUDGET APPORTIONMENTS

|                      |           |                     |                  |
|----------------------|-----------|---------------------|------------------|
| Armbrust .....       | \$ 200.00 | Josephine .....     | 25.00            |
| Belle Bridge .....   | 130.00    | McKeesport .....    | 200.00           |
| Bentleyville .....   | 30.00     | New Castle .....    | 50.00            |
| Byrnedale .....      | 100.00    | Pittsburgh .....    | 185.00           |
| Clinton .....        | 85.00     | Richeyville .....   | 25.00            |
| Clymer .....         | 25.00     | Shaner .....        | 25.00            |
| Donora .....         | 120.00    | Strattonville ..... | 12.00            |
| Elizabeth .....      | 150.00    | Warren .....        | 175.00           |
| Geneva .....         | 25.00     | West Newton .....   | 35.00            |
| Gipsy .....          | 25.00     |                     |                  |
| Homestead Park ..... | 50.00     |                     |                  |
|                      |           |                     | <hr/> \$1,672.00 |

---

## *In Memoriam*

During the past year, the Pittsburgh District, the Pittsburgh Church, and the cause of Missions has sustained an irreparable loss in the heavenly home going of Mrs. Maria Frost Schoombie from her loved Mission field of Northern Rhodesia, Africa, on November 20, 1941.

Sister (Frost) Schoombie by her saintly life and untiring zeal for God and His cause left a lasting imprint for good wherever she labored, at home and abroad.

Being called to Mission work early in life, she waited for thirteen years before the opportunity to go came. Throughout all these years of waiting she faithfully applied herself along lines of pursuit that would make her more efficient for the task to which God had called her, whenever in His providence she would be privileged to go.

After finishing her secular school course, she spent some time in God's Bible School, then graduated as a nurse from an institution in New Jersey, then entering upon her labors as such. Her last post of duty as a nurse in the homeland was with the Zoar Home in Pittsburgh, Pennsylvania, where she left a record unsurpassed, in that it was said of her, "We have never had, and perhaps may never again have another who has had such an influence for good over the girls in the institution as has Maria Frost."

On arriving on the Mission field she entered into her labor there with the same God-inspired zeal that characterized her work at home, and endeared herself to fellow-workers and natives alike, leaving the same godly imprint upon all whose lives she touched till God in His good providence called her home in the prime of life. Long live her memory.

## *One By One*

One by one the leaves are falling, From the bough where once they clung.  
One by one are voices ceasing, That in our midst His praise have sung.

One by one they leave for glory, At the beckon of His hand.  
One by one they join that army, In that distant, unknown land.

Grant us Lord as still we linger, In the ranks yet militant.  
Grace to fight on till we're mustered, To the Church now triumphant.

Grant that we may never falter, And the battle wage with care.  
Keeping ever in our vision, Souls, you'd have us bring Thee there.

For to tarry idle-handed Is but cowardice and sin.  
Jesus calls, "Be up and doing, Help Me bring the lost ones in".

No one has the promise ever, To a place in yonder clime,  
Who has not been fully faithful, Using well, for Him, their time.

But to him who heeds the message, Of our glorious King of kings,  
Living to bring souls to Jesus, Wins the "Well done" that it brings.

—Heb. 3:14.

CHAS. A. BROWN.

---

# Pastors' Reports

12

|                                | Sermons Preached | Prayer Serv. Cond. | Communion Serv. Con. | Song Serv. Cond. | Other Serv. Cond. | Revivals Conducted | Adv. Board Mtgs. Con. | S.S. Bd. Mtgs. Cond. | Pastoral Calls to Mem. | Pas. Calls to non-mem. | Total Pastoral Calls | Seeking Regeneration | Seeking Sanctification | Prayed w. for Heal'g. | Baptisms | Child'n Dedicated | Marriages | Funerals | Adv. Subs. Secured | No. Books Read | Lgth. of Time on Chg. | Ttl. Cash Sup. On Chg. | Ttl. Cash Sup Off Chg. | Est. Amt. Donations | Total Support |          |      |
|--------------------------------|------------------|--------------------|----------------------|------------------|-------------------|--------------------|-----------------------|----------------------|------------------------|------------------------|----------------------|----------------------|------------------------|-----------------------|----------|-------------------|-----------|----------|--------------------|----------------|-----------------------|------------------------|------------------------|---------------------|---------------|----------|------|
| Armbrust, Given T. Kutz        | 165              | 48                 | 2                    | 60               | 40                | 1                  | 12                    | ...                  | ...                    | ...                    | 125                  | 4                    | ...                    | 6                     | 4        | ...               | 3         | 4        | ...                | 10             | y. mo.                | 1 10                   | \$1,224.00             | 110.00              | 73.00         | 1,407.00 | Ord. |
| Belle Bridge, Elmer D. Joy     | 52               | 27                 | 1                    | ...              | ...               | 1                  | 7                     | 1                    | 92                     | 99                     | 191                  | 13                   | 7                      | 2                     | ...      | ...               | ...       | ...      | 1                  | ...            | 5 1/2                 | 360.00                 | ...                    | 56.38               | 416.38        | Ord.     |      |
| Bentleyville, E. A. Patmore    | See              | Richeyville        |                      |                  |                   |                    |                       |                      |                        |                        |                      |                      |                        |                       |          |                   |           |          |                    |                |                       |                        |                        |                     |               |          |      |
| Byrnedale, I. Brown Holland    | 91               | 131                | ...                  | 60               | 8                 | ...                | 10                    | ...                  | 403                    | 497                    | 900                  | 4                    | 3                      | 50                    | ...      | 1                 | 1         | 7        | 12                 | 7              | 1                     | 8                      | 923.77                 | ...                 | 85.89         | 1,009.66 | Ord. |
| Clinton, Marshal Brown         | 78               | 39                 | 4                    | 42               | 4                 | 1                  | 8                     | 6                    | ...                    | ...                    | 150                  | 15                   | 8                      | 5                     | ...      | 1                 | 1         | 2        | ...                | ...            | 7                     | 607.93                 | 58.00                  | ...                 | 665.93        | Ord.     |      |
| Clymer, R. C. Dettmer          | See              | Gipsy              |                      |                  |                   |                    |                       |                      |                        |                        |                      |                      |                        |                       |          |                   |           |          |                    |                |                       |                        |                        |                     |               |          |      |
| Donora, Samuel A. Byers        | 101              | 48                 | 4                    | 71               | 3                 | ...                | 12                    | 9                    | 250                    | 262                    | 502                  | 11                   | 5                      | 59                    | ...      | 3                 | ...       | 22       | 5                  | 3              | 10                    | 721.50                 | ...                    | 29.00               | 750.50        | Lie.     |      |
| Elizabeth, M. H. Bowman        | 99               | 45                 | 4                    | 144              | 20                | ...                | 12                    | 13                   | 232                    | 188                    | 420                  | 13                   | 4                      | 16                    | 2        | ...               | 7         | 38       | ...                | 7              | ...                   | 1,255.00               | ...                    | 126.11              | 1,381.11      | Ord.     |      |
| Mrs. M. H. Bowman              | 28               | 4                  | ...                  | 30               | 12                | ...                | ...                   | ...                  | 126                    | 129                    | 255                  | 2                    | ...                    | 9                     | ...      | 6                 | ...       | 8        | ...                | ...            | ...                   | ...                    | ...                    | ...                 | ...           | Ord.     |      |
| Geneva, Forrest B. Gray        | 110              | 85                 | 2                    | 171              | ...               | 1                  | 10                    | ...                  | 131                    | 97                     | 228                  | 30                   | 30                     | 6                     | ...      | ...               | 21        | 3        | 1                  | ...            | ...                   | 729.82                 | 234.77                 | 25.72               | 990.31        | Lie.     |      |
| Gipsy, R. C. Dettmer           | 162              | 92                 | 3                    | ...              | 24                | 3                  | 12                    | 2                    | ...                    | ...                    | 250                  | 3                    | 10                     | 3                     | ...      | 3                 | 1         | ...      | 16                 | 14             | 8                     | 364.45                 | 70.89                  | 138.00              | 573.34        | Lie.     |      |
| Hampton, Wm. J. Copeland       | 41               | 61                 | ...                  | 141              | 38                | 1                  | ...                   | ...                  | ...                    | ...                    | 142                  | 6                    | ...                    | 12                    | 10       | ...               | ...       | ...      | ...                | 1              | ...                   | ...                    | ...                    | ...                 | ...           | Lie.     |      |
| Mrs. Wm. J. Copeland           | 48               | 25                 | ...                  | 15               | 20                | ...                | ...                   | ...                  | ...                    | ...                    | 160                  | ...                  | ...                    | 10                    | 10       | ...               | ...       | 4        | ...                | 1              | ...                   | ...                    | ...                    | ...                 | ...           | Lie.     |      |
| H'm's't'd Pk., Wilfred Hallam  | 69               | 50                 | 2                    | 111              | ...               | ...                | 3                     | ...                  | 6                      | 9                      | 15                   | ...                  | ...                    | ...                   | ...      | 1                 | ...       | ...      | 11                 | ...            | ...                   | ...                    | ...                    | ...                 | ...           | Lie.     |      |
| Josephine, Clarence Wert       | 110              | 65                 | ...                  | ...              | 15                | ...                | 11                    | ...                  | ...                    | ...                    | 425                  | 15                   | 5                      | 25                    | ...      | 2                 | ...       | 12       | 40                 | 3              | 6                     | 693.24                 | ...                    | 75.00               | 768.24        | Ord.     |      |
| McKeesport, P. F. Elliott, Jr. | 150              | 40                 | 2                    | 5                | ...               | 1                  | 7                     | 5                    | 325                    | 272                    | 597                  | 85                   | ...                    | 20                    | ...      | 7                 | 5         | 5        | 75                 | ...            | 4                     | 1,590.00               | 75.00                  | 357.00              | 2,022.00      | Ord.     |      |
| New Castle, Clifford Duncan    | 62               | 28                 | 1                    | 58               | 12                | 4                  | 15                    | ...                  | 27                     | 102                    | 129                  | 23                   | ...                    | 6                     | 3        | ...               | ...       | 8        | ...                | ...            | ...                   | 227.50                 | 21.77                  | 5.00                | 254.27        | Lie.     |      |
| Pittsburgh, Chas. A. Brown     | 80               | 46                 | 4                    | 25               | 4                 | ...                | 12                    | 6                    | 56                     | 166                    | 222                  | 20                   | 5                      | ...                   | ...      | 1                 | 2         | 4        | 51                 | 17             | 13                    | 1,322.00               | ...                    | ...                 | 1,322.00      | Ord.     |      |
| Richeyville, E. A. Patmore     | 127              | 76                 | 1                    | 203              | ...               | ...                | 3                     | ...                  | ...                    | ...                    | 150                  | ...                  | ...                    | 10                    | ...      | 2                 | 1         | 1        | 30                 | ...            | 2                     | 711.01                 | ...                    | 100.00              | 811.01        | Ord.     |      |
| Shaner, Earl Rutherford        | 39               | 15                 | ...                  | 36               | 2                 | 1                  | 1                     | ...                  | ...                    | ...                    | ...                  | ...                  | ...                    | ...                   | ...      | 1                 | ...       | 1        | ...                | 7              | ...                   | 69.37                  | ...                    | 3.31                | 72.68         | Lie.     |      |
| Strattonville, Andrew Jalosky  | 156              | ...                | ...                  | ...              | ...               | ...                | ...                   | ...                  | ...                    | ...                    | 587                  | 39                   | ...                    | ...                   | ...      | ...               | ...       | ...      | ...                | ...            | ...                   | 320.00                 | ...                    | 275.50              | 595.50        | Lie.     |      |
| Warren, Leonard Drury          | 123              | 82                 | 3                    | 134              | ...               | ...                | 11                    | ...                  | 300                    | 428                    | 728                  | 40                   | 55                     | 16                    | 3        | 3                 | 5         | ...      | 16                 | 13             | 5                     | 1,187.00               | 85.00                  | 103.40              | 1,375.40      | Ord.     |      |
| W. Newton, Earl Rutherford     | 62               | 37                 | 1                    | 49               | 7                 | ...                | 14                    | 5                    | 110                    | 120                    | 230                  | 11                   | 4                      | 9                     | 2        | ...               | 2         | 13       | ...                | ...            | 7                     | 440.23                 | 1.00                   | 77.10               | 518.33        | Lie.     |      |
| Unstationed Ministers          | 250              | 123                | 3                    | 144              | 30                | 9                  | ...                   | ...                  | ...                    | ...                    | 200                  | 200                  | 15                     | 35                    | ...      | 1                 | ...       | 20       | 10                 | ...            | ...                   | 420.91                 | ...                    | 10.00               | 430.91        | ...      |      |
| TOTALS                         | 2109             | 1167               | 49                   | 1499             | 227               | 23                 | 160                   | 47                   | ...                    | ...                    | 6606                 | 534                  | 151                    | 299                   | 34       | 18                | 26        | 39       | 340                | 138            | ...                   | 13,167.73              | 656.43                 | 1,540.41            | 15,364.57     |          |      |

# Statistical Report

22

|                                 | Membership Last Year | Mem. Last Report | No. Dropped | Trans. by Letter | No. Deaths | Total Removals | Add. by Prof. of F. | Add. by Letter | Total Add. | Present Mem. | Active Mem. Enrolled | Cradle Roll | Home Dept. | Total Enrollment | Average Attendance | Active Associate | Honorary | Average Attend. | Avg. Attend. Last Yr. | Preach. Serv., Pastor | Preach. Serv., Others | Ch. Prayer Services | Cottage Prayer Serv. | Bible Studies | S. S. Sessions | Y. P. S. Services | Other Services | Total Services | Individuals Regen. | Seeking Sanctification | Number Revivals |     |
|---------------------------------|----------------------|------------------|-------------|------------------|------------|----------------|---------------------|----------------|------------|--------------|----------------------|-------------|------------|------------------|--------------------|------------------|----------|-----------------|-----------------------|-----------------------|-----------------------|---------------------|----------------------|---------------|----------------|-------------------|----------------|----------------|--------------------|------------------------|-----------------|-----|
| Armbrust, Given T. Kutz         | 36                   | 36               | 0           | 0                | 0          | 0              | 0                   | 0              | 0          | 36           | 125                  | 9           | 2          | 134              | 90                 | 8                | 18       | 5               | 29                    | 22                    | 113                   | 3                   | 26                   | 0             | 24             | 52                | 44             | 1              | 263                | 4                      | 1               | 3   |
| Belle Bridge, Elmer D. Joy      | 22                   | 22               | ...         | ...              | ...        | ...            | ...                 | ...            | ...        | 22           | 69                   | 11          | 2          | 82               | 57                 | ...              | ...      | ...             | ...                   | ...                   | 55                    | 85                  | 48                   | 30            | ...            | 52                | ...            | 3              | 273                | 17                     | 10              | 3   |
| Bentleyville, E. A. Patmore     | 21                   | 22               | ...         | ...              | ...        | 0              | 8                   | ...            | ...        | 29           | 56                   | ...         | ...        | 56               | 40                 | ...              | ...      | ...             | ...                   | ...                   | 66                    | 56                  | 45                   | ...           | ...            | 52                | 21             | ...            | 292                | 20                     | 11              | 2   |
| Byrnedale, Ira Brown Holland    | 50                   | 48               | 2           | 2                | 2          | 6              | 2                   | 2              | 2          | 46           | ...                  | ...         | ...        | ...              | ...                | 13               | 7        | 3               | 11                    | 16                    | 91                    | 23                  | 52                   | 79            | ...            | 48                | 3              | 296            | 30                 | 25                     | 1               |     |
| Clinton, Marshal Brown          | 45                   | 45               | ...         | 2                | ...        | 2              | ...                 | 2              | 2          | 45           | 64                   | 11          | ...        | 75               | 47                 | ...              | ...      | ...             | ...                   | ...                   | 86                    | 33                  | 74                   | 18            | ...            | 49                | 50             | ...            | 310                | 15                     | 8               | 1   |
| Clymer, R. C. Dettmer           | 10                   | ...              | ...         | ...              | ...        | 0              | 2                   | 1              | 3          | 13           | 49                   | 3           | ...        | 52               | 28                 | ...              | ...      | ...             | ...                   | ...                   | 50                    | 15                  | 20                   | 28            | ...            | 52                | 28             | 6              | 199                | 4                      | 6               | 1   |
| Donora, Samuel Byers            | 43                   | 39               | ...         | 2                | 2          | 4              | ...                 | 0              | 39         | 88           | 17                   | ...         | ...        | 105              | 72                 | 21               | 8        | 10              | 36                    | 36                    | 97                    | 41                  | 47                   | ...           | ...            | 52                | 53             | 6              | 296                | ...                    | 2               | 2   |
| Elizabeth, M. H. Bowman         | 47                   | 51               | 2           | 0                | 0          | 2              | 6                   | ...            | 6          | 51           | 139                  | 17          | 3          | 159              | 93                 | 21               | 14       | 12              | 36                    | 30                    | 81                    | 43                  | 43                   | 14            | ...            | 52                | 49             | 6              | 288                | 74                     | 27              | 2   |
| Geneva, Forrest B. Gray         | 29                   | 29               | 0           | 0                | ...        | ...            | ...                 | ...            | 29         | 60           | 15                   | ...         | ...        | 75               | 36                 | 14               | 5        | 3               | 15                    | 9                     | 97                    | 29                  | 47                   | 39            | ...            | 52                | 52             | 2              | 283                | 5                      | 12              | 1   |
| Gipsy, R. C. Dettmer            | 17                   | 17               | ...         | ...              | ...        | ...            | ...                 | 2              | 2          | 19           | 28                   | 8           | ...        | 36               | 22                 | 9                | 9        | 10              | ***                   | 17                    | 49                    | 12                  | 82                   | 39            | 12             | 52                | 31             | 8              | 280                | 4                      | 2               | 2   |
| Hampton, Elizabeth Copeland     | ...                  | ...              | ...         | ...              | ...        | ...            | ...                 | ...            | ...        | ...          | ...                  | ...         | ...        | ...              | ...                | ...              | ...      | ...             | ...                   | ...                   | ...                   | ...                 | ...                  | ...           | ...            | ...               | ...            | ...            | ...                | ...                    | ...             | ... |
| H'm's'ud Pk., Wilfred Hallam    | 7                    | 7                | 1           | ...              | 1          | ...            | ...                 | ...            | ...        | 6            | 40                   | ...         | ...        | 40               | 23                 | ...              | ...      | ...             | ...                   | ...                   | 69                    | 26                  | 50                   | ...           | ...            | 50                | ...            | ...            | 195                | ...                    | ...             | ... |
| Josephine, Clarence Wert        | 34                   | 34               | ...         | ...              | ...        | ...            | ...                 | ...            | 34         | 117          | 30                   | ...         | ...        | 147              | 83                 | ...              | ...      | ...             | ...                   | ...                   | 85                    | 25                  | 46                   | ...           | 44             | 52                | 9              | ...            | 271                | 36                     | 14              | 2   |
| McKeesport, P. F. Elliott       | 110                  | 106              | ...         | 7                | 1          | 8              | 1                   | 3              | 4          | 106          | 220                  | 12          | ...        | 232              | 143                | ...              | ...      | ...             | ...                   | ...                   | 80                    | 60                  | 40                   | ...           | ...            | 50                | 48             | ...            | 278                | 150*                   | ...             | 2   |
| New Castle, Clifford Duncan     | 10                   | 10               | ...         | ...              | ...        | 1              | ...                 | 1              | 11         | 43           | 8                    | ...         | ...        | 51               | 39                 | ...              | ...      | ...             | ...                   | ...                   | 62                    | 76                  | 28                   | 9             | ...            | 42                | ...            | 3              | 178                | 23*                    | ...             | 4   |
| Pittsburgh, Charles A. Brown    | 78                   | 71               | 7           | ...              | 1          | 9              | 3                   | ...            | 3          | 72           | 79                   | 9           | 10         | 98               | 67                 | 13               | 6        | 9               | 13                    | 20                    | 86                    | 31                  | 51                   | 3             | 3              | 52                | 52             | 52             | 330                | 20                     | 5               | 2   |
| Richeyville, E. A. Patmore      | 32                   | 24               | 9           | ...              | 9          | ...            | ...                 | ...            | 23         | 72           | 27                   | ...         | ...        | 99               | 29                 | ...              | ...      | ...             | ...                   | ...                   | 61                    | 31                  | 32                   | 7             | ...            | 51                | 30             | ...            | 212                | 41                     | 25              | 2   |
| Shaner, Earl Rutherford         | 19                   | ...              | ...         | ...              | ...        | ...            | ...                 | ...            | 19         | ...          | ...                  | ...         | ...        | ...              | ...                | ...              | ...      | ...             | ...                   | ...                   | 78                    | 59                  | 46                   | 46            | ...            | 52                | 39             | 25             | 345                | 40                     | 55              | 3   |
| **Strattonville, Andrew Jalosky | ...                  | ...              | ...         | ...              | ...        | 9              | ...                 | 9              | 9          | 88           | 3                    | ...         | ...        | 91               | 70                 | 15               | 3        | 20              | 30                    | 20                    | 73                    | 76                  | 59                   | 41            | ...            | 52                | 33             | 5              | 339                | ...                    | ...             | 3   |
| Warren, Leonard Drury           | 32                   | ...              | 1           | ...              | 1          | 4              | ...                 | 4              | 35         | 75           | 8                    | ...         | ...        | 83               | 54                 | 18               | 1        | ...             | 30                    | ...                   | ...                   | ...                 | ...                  | ...           | ...            | ...               | ...            | ...            | ...                | ...                    | ...             | ... |
| West Newton, Earl Rutherford    | 20                   | 23               | ...         | ...              | 0          | 3              | ...                 | 3              | 23         | ...          | ...                  | ...         | ...        | ...              | ...                | ...              | ...      | ...             | ...                   | ...                   | ...                   | ...                 | ...                  | ...           | ...            | ...               | ...            | ...            | ...                | ...                    | ...             | ... |

TOTALS

662 | 42 | 39 | 8 | 47 | 667 | 1412 | 188 | 15 | 1615 | 1083 | 132 | 71 | 72 | 178 | 200 | 1379 | 724 | 836 | 353 | 83 | 866 | 587 | 120 | 4928 | 483 | 200 | 34

\*\*Just Organized.

\*\*\*No Report.

\*Includes Individuals Seeking Sanctification.

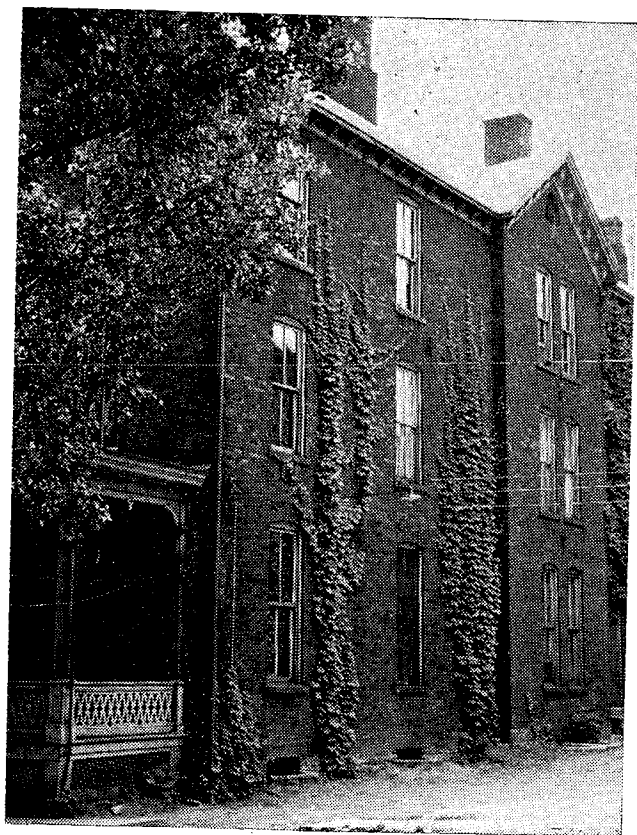


# Financial Report

|                         | Cash Forwarded<br>All Depts. | Cash Forwarded<br>By Church | Cash Forwarded<br>By Sunday School | Cash Forwarded<br>By Y. P. S. | Total Cash Receipts | Pastor's Cash Support | Evangelists' Offerings | Rents    | Interest | Fuel and Light | Janitor | Improvements | Prop. or Indebtedness | S. S. Supplies | Incidentals | Special Interests |
|-------------------------|------------------------------|-----------------------------|------------------------------------|-------------------------------|---------------------|-----------------------|------------------------|----------|----------|----------------|---------|--------------|-----------------------|----------------|-------------|-------------------|
|                         | RECEIPTS                     |                             |                                    |                               | EXPENDITURES        |                       |                        |          |          |                |         |              |                       |                |             |                   |
| Armbrust                | 246.98                       | 2,217.45                    | 459.72                             | 108.78                        | 3,032.93            | 1,224.00              | 70.00                  | .....    | .....    | 14.70          | 95.00   | 525.00       | .....                 | 33.07          | 182.04      | 10.00             |
| Belle Bridge            | 180.59                       | 1,366.37                    | 648.01                             | 15.15                         | 2,210.12            | 601.00                | 170.00                 | 106.63   | .....    | 31.92          | 78.00   | 135.72       | .....                 | 81.41          | 111.95      | 11.00             |
| Bentleyville            | .39                          | 750.75                      | .....                              | .....                         | 751.14              | 332.90                | 93.64                  | 150.00   | .....    | 40.28          | 4.75    | .....        | .....                 | .....          | 10.80       | 8.83              |
| Byrnedale               | .....                        | 1,167.27                    | .....                              | .....                         | 1,167.27            | 694.79                | 100.00                 | .....    | .....    | 49.70          | .....   | 26.00        | .....                 | .....          | 7.00        | .....             |
| Clinton                 | 11.79                        | 1,503.61                    | 86.00                              | 38.69                         | 1,656.94            | 870.31                | 80.00                  | .....    | .....    | 90.92          | .....   | 115.47       | .....                 | 70.91          | 117.08      | 9.19              |
| Clymer                  | 34.39                        | 500.00                      | 94.31                              | .....                         | 678.70              | 79.02                 | .....                  | 169.00   | 18.00    | 17.48          | .....   | .....        | 245.00                | 32.10          | 9.52        | 8.15              |
| Donora                  | 12.98                        | 2,125.53                    | 637.05                             | 22.82                         | 2,798.38            | 742.50                | 253.00                 | 180.00   | .....    | 59.99          | .....   | .....        | .....                 | 28.65          | 263.92      | 617.49            |
| Elizabeth               | 128.26                       | 2,797.54                    | 397.03                             | 40.08                         | 3,362.91            | 1,187.50              | 250.00                 | 287.50   | .....    | 140.72         | .....   | 150.42       | 100.00                | 89.82          | 451.73      | 12.00             |
| Geneva                  | 12.98                        | 1,458.31                    | 86.05                              | 10.38                         | 1,567.72            | 795.00                | 100.00                 | 93.00    | .....    | 58.40          | 41.60   | .....        | .....                 | 56.63          | 143.67      | .....             |
| Gipsy                   | 146.28                       | 586.11                      | 67.57                              | .....                         | 799.96              | 233.54                | 33.10                  | 60.00    | .....    | 25.35          | .....   | .....        | 49.50                 | 38.32          | 132.66      | 35.50             |
| Homestead Pk.           | 7.23                         | 492.49                      | 49.81                              | .....                         | 549.53              | .....                 | .....                  | .....    | .....    | .....          | .....   | .....        | .....                 | 27.45          | 308.17      | 3.00              |
| Josephine               | 52.95                        | 1,650.69                    | 139.69                             | .....                         | 1,843.33            | 693.24                | 204.81                 | 122.50   | 13.50    | .....          | .....   | .....        | 358.73                | 86.12          | 37.73       | 25.00             |
| McKeesport              | 933.35                       | 7,271.81                    | 706.85                             | 50.00                         | 8,962.01            | 1,590.00              | 565.00                 | .....    | 335.48   | 134.73         | 232.00  | 529.22       | 2,689.72              | 156.58         | 895.22      | .....             |
| New Castle              | 10.23                        | 1,355.47                    | 130.04                             | .....                         | 1,495.74            | 277.50                | 252.56                 | 305.00   | .....    | 65.94          | 30.50   | .....        | .....                 | 110.41         | 151.06      | 38.91             |
| Pittsburgh              | 106.68                       | 3,302.32                    | 424.01                             | 82.31                         | 3,916.32            | 1,322.30              | 133.10                 | 552.06   | 35.00    | 53.72          | 120.00  | 171.87       | 400.00                | 108.08         | 266.84      | 26.16             |
| Richeyville             | 22.38                        | 747.19                      | 45.83                              | .....                         | 815.40              | 378.11                | 102.00                 | 36.00    | 6.71     | 53.39          | .....   | .....        | 130.79                | .....          | 12.63       | 9.35              |
| Shaner                  | 23.85                        | 70.31                       | 52.50                              | .....                         | 146.66              | 65.82                 | 3.75                   | .....    | .....    | .....          | .....   | .....        | .....                 | 35.87          | 18.10       | .....             |
| Warren                  | 38.79                        | 3,011.24                    | 348.28                             | 35.81                         | 3,434.12            | 1,187.00              | 364.00                 | .....    | .....    | 107.83         | .....   | 81.99        | 260.00                | 89.55          | 277.53      | 256.91            |
| West Newton             | 25.22                        | 1,158.34                    | 191.32                             | 67.53                         | 1,442.41            | 570.95                | 204.25                 | .....    | .....    | 46.93          | .....   | 42.84        | 30.82                 | 45.41          | 104.78      | 27.79             |
| District Camp Valuation | .....                        | .....                       | .....                              | .....                         | .....               | .....                 | .....                  | .....    | .....    | .....          | .....   | .....        | .....                 | .....          | .....       | .....             |
| TOTALS                  | 1,995.32                     | 33,532.80                   | 4,564.07                           | 472.55                        | 40,591.59           | 13,446.48             | 2,909.21               | 2,061.69 | 408.69   | 992.00         | 601.85  | 1,778.53     | 4,264.56              | 1,090.38       | 3,502.43    | 1,099.28          |

# Financial Report --- Concluded

|                | Supt. by Pastor        | Supt. by Church | District Budget | A. B. L. | Assembly Minutes | General Budget | Special Interests | Total Expenditures | Balance on Hand In Church | Balance on Hand In Sunday School | Balance on Hand In Y. P. S. | Total Bal. on Hand. | Bal. in Building Fund | Valuation Church | Valuation Parsonage | Inlebedness Church | Indebtedness Parsonage |
|----------------|------------------------|-----------------|-----------------|----------|------------------|----------------|-------------------|--------------------|---------------------------|----------------------------------|-----------------------------|---------------------|-----------------------|------------------|---------------------|--------------------|------------------------|
|                | EXPENDITURES CONTINUED |                 |                 |          |                  |                |                   |                    | BALANCE                   |                                  |                             |                     |                       |                  |                     |                    |                        |
| Armbrust       | 104.60                 | 6.25            | 139.02          | 33.00    | .....            | 292.99         | 208.89            | 2,938.56           | 21.25                     | 50.63                            | 22.49                       | 94.37               | .....                 | 2,000.00         | 3,000.00            | .....              | ...                    |
| Belle Bridge   | 61.43                  | 33.10           | 63.89           | 30.68    | .....            | 125.04         | 322.96            | 1,964.73           | 161.47                    | 15.21                            | 68.71                       | 245.39              | 2.23                  | .....            | .....               | .....              | ...                    |
| Bentleyville   | 20.00                  | 3.43            | 40.33           | .....    | .....            | 36.03          | .....             | 740.99             | 10.15                     | .....                            | .....                       | .....               | .....                 | .....            | .....               | .....              | ...                    |
| Byrnedale      | 72.42                  | .....           | 38.39           | 36.40    | .....            | 32.09          | 110.48            | 1,167.27           | .....                     | .....                            | .....                       | .....               | .....                 | .....            | .....               | .....              | ...                    |
| Clinton        | 74.17                  | .....           | 104.91          | .....    | .....            | 96.34          | 26.62             | 1,645.41           | 1.02                      | 2.34                             | 8.17                        | 11.53               | .....                 | 2,000.00         | 1,800.00            | .....              | ...                    |
| Clymer         | 7.70                   | 2.60            | .....           | .....    | .....            | 24.87          | .....             | 613.44             | .....                     | 15.26                            | .....                       | 15.26               | .....                 | 2,000.00         | .....               | .....              | ...                    |
| Donora         | 58.50                  | 5.00            | 200.50          | 48.00    | .....            | 151.49         | 173.98            | 2,783.11           | 5.34                      | .....                            | .....                       | .....               | .....                 | 7,500.00         | .....               | .....              | ...                    |
| Elizabeth      | 101.25                 | 8.54            | 244.51          | 37.19    | 5.25             | 154.03         | 63.78             | 3,318.83           | 31.19                     | 8.41                             | 4.48                        | 44.08               | 29.11                 | 6,100.00         | .....               | 383.22             | ...                    |
| Geneva         | 75.86                  | 12.51           | 92.38           | 17.70    | .....            | .....          | .....             | 1,397.28           | 51.05                     | 29.42                            | .50                         | 80.97               | 170.00                | 1,500.00         | .....               | .....              | ...                    |
| Gipsy          | 23.45                  | 2.00            | 36.51           | 1.00     | 1.00             | 33.30          | 18.34             | 722.57             | 10.25                     | 22.22                            | 5.47                        | 37.94               | 39.45                 | .....            | .....               | .....              | ...                    |
| Homestead Park | 50.00                  | .....           | 40.40           | 11.70    | .....            | 21.90          | 71.67             | 534.29             | 12.19                     | 3.05                             | .....                       | 15.24               | 252.81                | 8,000.00         | .....               | 1,271.06           | ...                    |
| Josephine      | 52.09                  | 2.90            | 76.00           | 7.95     | 1.25             | 44.99          | 52.60             | 1,771.41           | 67.96                     | 3.96                             | .....                       | 71.92               | 51.50                 | 2,500.00         | .....               | 180.00             | ...                    |
| McKeesport     | 120.00                 | 30.00           | 236.48          | 42.52    | .....            | 269.30         | 195.85            | 8,229.61           | 615.40                    | 102.00                           | 15.00                       | 732.40              | 189.00                | 25,000.00        | 7,000.00            | 5,808.75           | ...                    |
| New Castle     | 19.27                  | .....           | 74.60           | .....    | .....            | 80.60          | .....             | 1,406.35           | 59.53                     | 29.86                            | .....                       | 89.37               | .....                 | .....            | .....               | .....              | ...                    |
| Pittsburgh     | 99.05                  | 3.65            | 145.00          | .....    | 2.50             | 193.16         | 171.68            | 3,806.17           | 54.06                     | 52.99                            | 3.10                        | 110.15              | .....                 | 6,000.00         | .....               | 500.00             | ...                    |
| Richeyville    | 24.75                  | .....           | 3.80            | .....    | .....            | 25.21          | .....             | 811.99             | .....                     | 3.41                             | .....                       | .....               | .....                 | 2,000.00         | .....               | 650.00             | ...                    |
| Shaner         | .....                  | .....           | .....           | .....    | 1.00             | .....          | .....             | 124.54             | 4.49                      | 16.63                            | .....                       | 22.12               | .....                 | .....            | .....               | .....              | ...                    |
| Warren         | 91.90                  | 10.00           | 136.45          | 9.00     | 5.00             | 198.31         | 313.48            | 3,388.95           | 29.88                     | 9.33                             | 5.96                        | 45.17               | .....                 | 5,000.00         | 2,000.00            | 395.00             | ...                    |
| West Newton    | 41.98                  | 16.67           | 35.84           | 7.05     | 2.50             | 35.47          | 8.46              | 1,266.24           | 155.07                    | 11.17                            | 7.55                        | 174.98              | .....                 | 1,500.00         | .....               | .....              | ...                    |
| District Camp  | .....                  | .....           | .....           | .....    | .....            | .....          | .....             | .....              | .....                     | .....                            | .....                       | .....               | .....                 | 30,000.00        | .....               | 1,800.00           | ...                    |
| TOTALS         | 1,098.42               | 136.65          | 1,709.01        | 282.19   | 18.50            | 1,815.12       | 1,738.79          | 38,631.74          | 1,290.30                  | 375.89                           | 141.43                      | 1,804.30            | 581.10                | 102,600.00       | 15,300.00           | 10,988.03          | 00                     |



---

## **Ministerial Convention**

**March 23, 24, 25, 1943**

---

## **District Camp Meeting**

**June 24 - July 4, 1943**

**Mt. Pleasant, Pennsylvania**

---

## **District Conference**

**July 5, 1943**

**Mt. Pleasant, Pennsylvania**

---