

MINUTES  
OF THE  
**19th ANNUAL SESSION**  
**INDIANA CONFERENCE**  
OF THE  
**HOLINESS CHRISTIAN CHURCH**  
HELD AT  
**FRANKFORT, INDIANA**  
**August 31, to September 4, 1914**

---

Editors

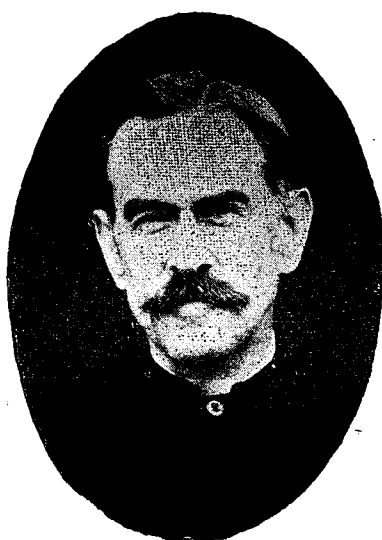
CLYDE SHEARER, Conference Secretary.

FRANK N. MYERS, Assistant Secretary.

CARLINVILLE, ILL.

VOICE PUBLISHING COMPANY.

1914



E. J. N. Bradshaw, P. E.,  
KANS., & OKLA. DISTRICT



Albert M. Ewing, P. E.  
NORTHERN INDIANA DIST.



W. G. Bogue, P. E.  
SOUTHERN INDIANA DIST.



M. F. Pratt, P. E.,  
ILLINOIS & MISSOURI DIST.

1876  
HEADQUARTERS LIBRARY  
PILGRIM HOLINESS CHURCH  
4

## OFFICIAL RECORD

---

### OFFICERS OF THE CONFERENCE.

#### Chairmen—

W. G. BOGUE, Presiding Elder, Northern Indiana District.

A. M. EWING, Presiding Elder, Southern Indiana District.

M. F. PRATT, Presiding Elder, Illinois and Missouri District.

N. BRADSHAW, Presiding Elder, Kansas and Oklahoma District.

Secretary—CLYDE SHEARER, 537 W. Main St. Carlinville, Ill.

Assistant—FRANK MYERS, Collinsville, Ill.

Treasurer—WASHINGTON SHERMAN, Frankfort, Ind.

Conference Evangelist—JOHN W. CLARK, 1258 First St., Frankfort, Ind.

Trustees—CLYDE SHEARER. Term expires 1917.

ALBERT M. EWING. Term expires 1916.

MELVIN PRATT. Term expires 1915.

#### FOREIGN MISSIONARY BOARD.

M. F. Pratt, 3103 Bell Ave., St. Louis, Mo.

C. C. Brown, Box 27 Carlinville, Ill.

J. H. Julian, Elwood, Ind.

A. M. Ewing, Frankfort, Ind.

N. Bradshaw, Olathe, Kans.

BENEFICIARY BOARD.

D. L. Sailors, treasurer, Rushville, Ind.  
Clyde Shearer, A. D. Canary.

HOLINESS BIBLE SCHOOL AND FAITH  
MISSIONARY TRAINING HOME, CARLINVILLE, ILL.

Trustees—C. C. Brown. Term expires 1919.  
Standly Naden. Term expires 1918.  
Chas. A. Donoho. Term expires 1917.  
Clyde Shearer. Term expires 1916.  
W. G. Bogue. Term expires 1915.  
Superintendent—C. C. Brown.  
Assistant Supt.—Myrtle Brown.

“A VOICE FROM CANAAN” PUBLISHING COMPANY.  
CARLINVILLE, ILLINOIS.

Editor and Publisher—C. C. Brown.  
Assistant Editor—Flo Gookins Andrews.  
Publishing Committee—W. G. Bogue.  
A. M. Ewing.  
Melvin Pratt.  
N. Bradshaw.  
J. W. Clark.  
Clyde Shearer.

BETHEL HOLINESS ORPHANAGE, CARLINVILLE, ILLINOIS.  
(Incorporated.)

Superintendent—C. C. Brown.  
Matron—Eda Swenson.  
Trustees—M. F. Pratt. Term expires 1919.  
C. H. Andrews. Term expires 1918.  
B. F. Watts. Term expires 1917.  
Clyde Shearer. Term expires 1916.  
C. C. Brown. Term expires 1915.

BEULAH RESCUE HOME.

3103 BELL AVE., ST. LOUIS, MO.

Superintendent—Melvin F. Pratt.  
Matron—Julia Pratt.

Trustees—Melvin F. Pratt. Term expires 1921.  
W. G. Bogue. Term expires 1920.  
Deborah Wharton. Term expires 1919.  
Julia Pratt. Term expires 1918.  
C. C. Brown. Term expires 1917.  
Chas. E. Culberson. Term expires 1916.  
Wm. J. Webster. Term expires 1915.

## STANDING COMMITTEES

### EXAMINING COMMITTEE.

First year—J. H. Julian. B. H. Hines.  
E. C. Rhoades.  
Second year—C. C. Brown. J. W. Ross.  
J. J. Summerill.

### WAYS AND MEANS COMMITTEE.

G. C. Middleton. J. J. McIntosh.  
H. G. Solomon. Alice Hart.  
Grace Daugherty.

### STATISTICAL COMMITTEE.

Ed. Schoeff. W. C. Canary.  
Albert Holcomb. J. J. McIntosh.  
D. L. Sailors.

### AUDITING COMMITTEE.

A. H. Plunkett. A. D. Canary.  
John Higinbotham.

### RESOLUTION COMMITTEE.

Flo Gookins Andrews. Mary V. Myers.  
Katie Dunkelburger.

### CAMP MEETING COMMITTEE.

A. M. Ewing. J. H. Julian.  
M. F. Pratt. N. Bradshaw.  
J. W. Clark. W. G. Bogue.  
Chas. Donoho.

EDUCATIONAL BOARD.

W. G. Bogue.

J. W. Clark.

N. Bradshaw.

COMMITTEES FOR ANNUAL SESSION 1915

EXAMINING COMMITTEE.

First year—J. H. Julian. *W. H. Full* H. G. Solomon.  
G. C. Middleton. *W. H. Full*

Second year—J. W. Trout. *W. H. Full* C. C. Brown.  
*W. H. Full* B. H. Hines.

STATISTICAL COMMITTEE. *Bradshaw*

Ed. Schoeff. *J. J. McIntosh* Arthur Plunkett.

WAYS AND MEANS COMMITTEE.

J. W. Trout. *J. J. McIntosh* E. C. Rhoades. *D. L. Sailors*.

AUDITING COMMITTEE.

John Higinbotham. A. D. Canary.

EDUCATIONAL BOARD. *John Higinbotham*

J. W. Clark. Washington Sherman. N. Bradshaw.

CAMP MEETING COMMITTEE.

W. G. Bogue. M. F. Pratt.

N. Bradshaw. A. M. Ewing.

J. H. Julian. John Higinbotham.

J. W. Clark camp secretary.

## JOURNAL OF THE SESSION

---

The Nineteenth Indiana Annual Conference of the Holiness Christian Church convened at Frankfort, Indiana, August 31, 1914.

The opening address was given by Rev. J. H. Julian, P. E. Northern District, after which Conference was called to order with P. E., J. H. Julian in the chair.

Rules governing Conference.

Conference Bar—First six rows of seats in the two center rows.

The time of Conference from 8:30 A. M., to 12, and from 1:30 P. M., to 5:00. Each session preceded by fifteen minutes devotional services.

All speeches limited to ten minutes.

No member leave the Conference bar without permission from the chairman.

Reports be read without comment.

All members tardy at roll call give reasonable excuse for their absence.

E. W. Wright was appointed reporter for city papers.

Moved and carried that all Conference members give their address to the secretary before leaving the grounds.

The following were referred to the Examining Committee: Clarence Dye, U. T. Hollenback, Thomas

Brenton, Samuel Bland. Walter M. Hall, Elmer J. Clem, Alfred R. Higgs. E. H. Farris, Jessie Whitecotton, C. A. Fouts, Lizzy Jones, W. C. McClain, Iva Myers, A. J. Sampson, Bertha DeCroes, Lillie Rodgers, I. J. Snyder, Oscar Coffman, Chas. Eddy, J. G. Williams, Nora Gehres.

The following new classes and missions were received: Casey, Ill., Robinson, Ill., Springfield, Mo., Seelyville, Ind., Gognac, Kans., Elmdale, Okla., Lone Star, Okla. Missions: Collinsville, Ill., Paris, Ill., Aurora, Ind., Michigan City, Ind.

Adjournment: Benediction by Washington Sherman.

---

#### AFTERNOON SESSION—AUGUST 31, 1914.

After roll call and the reading of the minutes, the pastor's reports were taken up. (See tables.)

Adjournment: Benediction by H. G. Solomon.

---

#### MORNING SESSION—SEPTEMBER 1, 1914.

After devotional service the Conference was called to order with N. Bradshaw in the chair.

After roll call the minutes of the previous session were read and accepted.

Pastors' reports continued. (See tables.)

Carried that Jefferson Church be stricken from the roll.

Carried that the Conference trustees make an effort to ascertain the value of our vacated churches.

Evangelists' reports taken up. (See tables.)

Adjournment.

---

#### AFTERNOON SESSION—SEPTEMBER 1, 1914.

After devotional service, Conference was called to order with M. F. Pratt, P. E., in the chair.

After roll call the minutes of the previous session were read and accepted.

Pastors' reports continued. (See tables.)

Evangelists' reports continued. (See tables.)

The Presiding Elders' reports were read and accepted. (See tables.)

John W. Clark gave report concerning the printing of the minutes. Report referred to auditing committee.

The secretary read the reports of Rev. K. H. Jackson, Mrs. Rosa Hunter, and Prof. Walter Henschen, our Missionaries in Central America. These reports were received. (See tables.)

Also a letter and report from Lydia Abplanalp, our Japanese Missionary. The report was read and accepted. (See tables.)

The report of Carlinville Camp Meeting was read and referred to Auditing Committee.

M. F. Pratt gave financial report of Beulah Rescue Home. Report referred to Auditing Committee.

The financial report of "A Voice from Canaan" was read and referred to Auditing Committee.

The financial report of the Orphanage School Building was read and referred to Auditing Committee.

The financial report of Bible School was read and referred to Committee on minutes.

The financial report of Orphanage was read and referred to Auditing Committee.

The financial report of Beneficiary Board was read by W. G. Bogue, treasurer. The report was referred to Auditing Committee.

A letter of greeting from Brother Earl Benjamin of Argonia, Kansas, was read. Carried that we receive Brother Benjamin's letter with a rising vote and the secretary be instructed to reply with a letter of greeting.

Adjournment: Benediction by W. G. Bogue.

MORNING SESSION—SEPTEMBER 2, 1914.

After devotional service Conference was called to order with P. E., J. H. Julian in the chair.

After roll call the minutes of the previous session were read and accepted.

M. F. Pratt gave financial report for Foreign Missionary Board. The report was referred to Auditing Committee.

After a season of prayer the Conference entered into the election of officers for the coming year.

Adjournment: Benediction by B. H. Hines.

---

AFTERNOON SESSION—SEPTEMBER 2, 1914.

Conference was called to order with P. E., W. G. Bogue in the chair.

After roll call the minutes of the previous session were read and accepted.

The election of officers was continued. J. W. Clark was elected as solicitor in Indiana districts for Home Missions. He is authorized to visit our churches in Indiana, speak on the subject of Home Missions and take an offering for the same.

A. M. Ewing, Chas. Donoho and J. W. Clark were elected, for a term of three years, as property managers of Emmanuel Holiness Christian Camp Ground.

D. L. Sailors, Conference Treasurer, read his report. The report was referred to Auditing Committee.

An offering of \$5.06 was taken for J. W. Clark the retiring secretary, and \$5.15 for D. L. Sailors the retiring treasurer.

Adjournment: Benediction by J. H. Julian.

---

MORNING SESSION—SEPTEMBER 3, 1914.

Morning session was called to order with A. M. Ewing in the chair.

A. M. Ewing was elected as "Attorney in Fact" of the property managers of Emmanuel Camp Ground.

Carried that each class furnish the Conference with at least two comforters.

Carried that the secretaries edit five hundred copies of minutes.

D. C. Shearer, C. C. Brown, and M. F. Pratt were appointed to print church blanks.

M. F. Pratt and A. M. Ewing were elected delegates to the International Holiness Convention to be held in Cincinnati, Ohio, October 27, 1914.

Moved and carried that the Kansas and Oklahoma district be formed into an Annual Conference; and Rev. C. C. Brown be sent to organize the same at such time as the district requests. Carried that Rev. N. Bradshaw remain Presiding Elder until organized.

Adjournment: Benediction by C. C. Brown.

---

#### AFTERNOON SESSION—SEPTEMBER 3, 1914.

After roll call and reading of the minutes, Conference was called to order with M. F. Pratt in the chair.

The reports of the Ways and Means and Statistical Committees were accepted.

Carried that the traveling expenses of the Presiding Elders be paid from the Conference treasury.

Moved and carried that the duration of next Annual Camp Meeting be fifteen days.

Moved and carried that the date of the Camp Meeting and securing of evangelist be left to the discretion of the Camp Meeting Committee.

---

#### EVENING SESSION—SEPTEMBER 3, 1914.

After song and prayer, an Ordination Service was held in which the following were duly ordained: Lee Pratt, Frank Myers, Lillian Rodgers, Grace Daugherty, Anna Hines, Lizzie Jones, Sarah Plunkett and E. H. Farris.

A splendid sermon was then preached by Rev. I. J. Snyder of Springfield, Ohio, after which Conference was called to order by N. Bradshaw.

Carried that each class meet as soon as possible after this annual Conference and decide upon the minimum to be paid the pastor this year.

Carried that each ministerial member who fails to report either in person or by letter at next annual Conference be suspended.

Carried that each pastor raise five cents per member this year for the general Conference treasury.

After the Stationing Committee's report was accepted the Conference adjourned at 1:20 A. M., September 4.

Benediction by E. C. Rhoades.

Clyde Shearer, Secretary.

Frank Myers, Assistant Secretary.

## FINANCIAL AND NUMERICAL REPORTS

---

### REPORT OF BENEFICIARY TREASURER.

Amount brought forward	\$7.60
Amount received	201.10
Total	<u>\$208.70</u>
Amount paid out	82.65
Balance in treasury	<u>126.05</u>

W. G. Bogue, Treasurer.

### IVA MAY INFANT HOME.

Number of children cared for	18
Total income, donations and wages	\$1,164.00
Expenditures—	
House rent	\$355.00
House hold goods	52.00
Food, clothing and fuel	748.65
Total expenditures	<u>\$1,155.65</u>
Balance in treasury	8.00

Josephine Watts, Treasurer.

### CONFERENCE MINUTE REPORT.

#### Receipts—

From sale of Minutes	\$29.05
Borrowed from Camp Meeting Treasurer	38.25
Total receipts	<u>\$67.30</u>

#### Expenditures—

Printing 500 copies	\$55.00
Postage sending Minutes	1.33

Car fare	1.05
Express	2.92
To Camp Treasurer	38.25
Total expenditures	<u>\$98.75</u>
Deficit	31.45

Faithfully submitted John W. Clark, Editor.

## CONFERENCE TREASURER'S REPORT.

### Receipts—

Balance from last year	\$67.45
Apportionment	400.03
Conference collections	31.56
From minutes	55.03
From dining hall and lunch stand	52.79
Miscellaneous	10.20
Total receipts	<u>\$617.06</u>

### Expenditures—

Presiding Elders' car fare	\$310.38
Dining hall and stand expenses	125.83
Retiring Secretary and Treasurer	11.07
Car fare Brothers Bogue and Ruth	7.80
Miscellaneous	13.47
Minutes	55.00
Expense acc't	40.86
Loan from Camp Fund	38.25
Total expenditures	<u>\$602.66</u>
Balance in treasury	14.40

D. L. Sailors, Treasurer.

## A VOICE FROM CANAAN FINANCIAL REPORT

### Receipts—

To total amount of receipts	\$1,028.96
-----------------------------	------------

### Expenditures—

By cash paid out for Editor	\$297.72
By cash paid out for office help	193.46
By cash paid out for table	102.90
By cash paid out for general expenses	<u>434.96</u>

Total expenditures	\$1,028.98
Subscriptions dropped during the year	3,611
Subscriptions received during the year	1,185
Total subscription list at present	2,158

C. C. Brown, Editor and Publisher.

# REPORT OF CASH AND SUBSCRIPTION ON THE NEW SCHOOL HOUSE, BETHEL HOLINESS OR- PHANAGE.

## Receipts—

Cash received up-to-date (Aug. 20, 1914)	\$107.40
Subscriptions (unpaid)	159.25

## Expenditures—

For Presbyterian Parsonage	\$25.00
For taking down and moving of parsonage	18.45
For tools	2.00
For repairing of wagon	1.50
For sewer tile	30.70
For sewer work	23.00
Total expenditures	<u>\$100.65</u>
Balance on hands	6.67

C. C. Brown.

# FINANCIAL REPORT OF THE BETHEL HOLI- NESS ORPHANAGE.

## Receipts—

By cash	\$614.01
By sale of asparagus	13.48
By sale of strawberries	64.35
By sale of chickens	4.99
By sale of eggs	5.29
Total receipts	<u>\$702.12</u>
Total expenditures	702.12

C. C. Brown, Superintendent.

# BEULAH HOME, ST. LOUIS, MISSOURI.

## Receipts—

Stable receipts	\$56. 00
-----------------	----------

Workers and girls	798.94
Donations	2,035.62
Taxes donated	185.15
Fruit, vegetables, groceries, ice, stationary, Clothing, furniture. Plumbing, paint, Carpenter work and painting	1,618.50
Total receipts	<u>\$4,694.21</u>
Expenditures—	
Groceries	\$440.19
Stamps, stationary and printing	33.17
Paid out for workers and girls	15.68
Stable expenses	123.70
Car fare in the interest of the work	79.04
Gas light, and electric power for laundry	107.89
Telephone	47.76
Coal	155.32
Plumbing	50.25
Paid on principal	1,000.00
Interest paid on principal	510.00
Interest paid on loan	42.00
Sundries	285.42
Balance on hand	.14
Taxes paid	185.15
Donations of fruit etc.	1,618.50
Total expenditures	<u>\$4,694.21</u>
Inmates—	
Missionaries and young workers	31
Girls cared for during the year	31
Children cared for during the year	26
Visitors one night or more	104
Total	192

M. F. Pratt, Superintendent.

## FOREIGN MISSIONARY REPORT.

CENTRAL AMERICA PER M. F. PRATT.

### Receipts—

Brought forward from Aug. 31, 1913	\$403. 60
------------------------------------	-----------

Received for building fund in C. A.	133.50
Received for C. A. work	474.97
Total receipts for C. A. work	<u>\$1,012.07</u>
Africa per James Hundley	13.44
Expenditures—	
James Taylor	\$215.17
Car fare	40.10
Walter Henschen	78.50
K. H. Jackson	10.00
Postage and cheque exchange	2.50
Total expenditures	<u>\$346.27</u>
Balance on hand for C. A.	665.80
Paid out to James Hundley	13.44

CENTRAL AMERICA WORK PER JAMES TAYLOR.

Receipts—	
Received for building fund	\$153.50
Received for C. A. work	1,184.47
Total receipts	<u>\$1,337.97</u>
Debt due James Taylor	301.53
Expenditures—	
Paid out	\$1,639.50

JAPANESE WORK.

Receipts	\$280.20
Camp Meeting collection	28.00
Received from S. A. Blanton	10.00
Total receipts	<u>\$318.20</u>
Expenditures—	
Car fare	\$73.17
Tithes paid to Holiness Christian Church	26.11
Postage and stationary	3.88
Room and board—maps etc.	4.13
	<u>\$107.29</u>
Cash on hand by Sister Abplanalp	\$172.91
Paid Brother Ishi	10.00
Cash on hand by M. F. Pratt	28.00
	<u>\$38.00</u>

Sister Abplanalp	\$172.91
M. F. Pratt	28.00
Total on hand for Japanese work	<u>\$200.91</u>

#### SUMMARY.

##### Receipts—

Central America per M. F. Pratt	\$1,012.07
Africa per M. F. Pratt	13.44
Central America per James Taylor	1,337.97
Japan	318.20
Total receipts	<u>\$2,681.68</u>
Debt due James Taylor	301.53
Total	<u>\$2,983.21</u>
Expenditures	\$2,116.50
Total cash balances	866.71
Grand total	<u>\$2,983.21</u>

#### FINANCIAL REPORT OF THE CARLINVILLE CAMP MEETING.

##### Receipts—

By collections	\$104.91
Board and room rent	19.30
By special offering to Foreign Missions	15.90
By special offerings to Bible School	40.10
Total receipts	<u>\$180.21</u>

##### Expenditures—

For Evangelistic service	\$18.65
Singers	10.00
Electric lights	5.44
Dining hall expense	72.96
For cook	6.35
Incidental expense	10.81
To Foreign Missions	15.90
To Bible School	40.10
Total expenditures	<u>\$180.21</u>

Chas. H. Andrews, Treasurer.

## BIBLE SCHOOL.

Received for needs	\$403.52
Expended for needs	\$403.52

C. C. Brown, Superintendent.

## FRANKFORT CAMP MEETING REPORT

### Receipts—

Brought forward	\$55.72
Collections	330.67
Lodging	46.05
Tents and bunks	69.35
Dining hall	155.45
Lunch stand	151.77
Loan returned	19.45
Sheet's donation	5.00
Small pictures	2.05
Total on receipt	<u>\$835.51</u>

### Expenditures—

Lunch stand and Hall	\$338.24
Light, wire, labor	36.99
Rent on large tent	40.00
Freight	10.56
Drayage	6.28
Incidentals	178.44
Lunch stand clerk	20.00
Mahres sisters	50.00
Cook	50.00
Evangelist	100.00
Total	<u>\$830.51</u>
Balance in treas. Sept. 16th	5.00

### Special offerings—

Rescue Home Cash	\$103.14
Subscription	291.00
Total	<u>\$394.14</u>
Bible School Cash	\$37.12
Subscription	12.00
Total	<u>\$49.12</u>

Orphanage cash	\$44.65
Subscription	73.50
Total	<u>\$118.15</u>
Voice from Canaan cash	\$17.00
Camp ground cash	\$6.60
Subscription	174.00
Total	<u>\$180.60</u>
Foreign Mission cash	\$94.53
Subscription	51.00
Total	<u>\$145.53</u>
Total cash for all	\$1,138.55
Total raised in subscription	\$601.50
Grand total in cash and subscription	\$1,740.05
W. G. Bogue, Camp treasurer.	

### FOREIGN MISSIONARY REPORTS

ANNUAL REPORT OF K. H. JACKSON, MISSIONARY IN  
CENTRAL AMERICA. ENDING AUGUST 1st 1914.

Funeral	1
Number of miles traveled	6,507
On mule back (miles)	150
On small boats "	300
Lectured on missions	17
Times preached	99
Homes visited	65
Services attended	150
Saved and sanctified (Definitely)	44
Books sold	150
Bibles	10
Papers distributed (Spanish and English)	1,385
Tracts	5,000
New mission opened	1
Two Sunday schools, average attendance each	15

ANNUAL REPORT OF MRS. ROSEMMA B. HUNTER,  
MISSIONARY IN CENTRAL AMERICA.  
FROM JANUARY 20th TO AUGUST 1st.

Music pupils	6
English lessons	3

Services attended (asst. at organ etc)	100
Day scholars	20
Homes visited	85
“Band of Hope,” for children every Sunday evening at four o’clock. Number enrolled	
	31
Mrs. Hunter has also had many of the household duties to look after which has kept her very busy indeed.	

ANNUAL REPORT OF WALTER G. HENSCHEN,  
SUPERINTENDENT OF HOLINESS CHRISTIAN MISSIONARY SCHOOLS OF CENTRAL AMERICA.

I. Schools opened one	II. Times preached	55
(1.) Departments	Prayer meetings held	12
a. English	Funerals held	2
b. Spanish	Homes visited	24
(2.) Grades	Number saved or sanctified	6
a. Elementary	Sick prayed with	10
(1.) Primer	Places visited for gospel	[work 1
(2.) First		
(3.) Second	Books and Bibles sold	135
(4.) Third	Tracts and papers distributed	5,000
b. Intermediate	Services attended	90
(1.) Fourth		
(2.) Fifth		
(3.) Sixth		
(3.) Teachers, two		
(4.) Enrollment		
a. At opening, eight		
b. To-date, thirty-one		

REPORT OF LYDIA B. ABPLANALP.

I beg to submit herewith a report of my laborers as missionary for the year ending August 28, 1914.

In accordance with the recommendation of our Missionary Board, I have endeavored to present our Japanese Missionary work in as many of our local

churches during this past Conference year as time, strength, means and circumstances have permitted. I have held missionary services in thirty-four of our churches and missions and in school-houses, tents and homes where our people gather for worship. Some of these were places where we have no organized class.

God also opened doors in 17 other churches and missions, and in three holiness schools besides our own at Carlinville, Illinois. Have had the privilege of helping in a number of revivals and camp meetings.

Altogether I have conducted during the year about 108 services, distributed over the states of Kentucky, Ohio, Indiana, Illinois, Missouri, Kansas, and Oklahoma, and have traveled a little more than 4,000 miles.

I have now gone over our Conference and am about to proceed on to California, where, with God's help and guidance, I expect to establish a Holiness Christian Church for the Japanese.

In conclusion I would say that almost all of our pastors heartily co-operated with me in this missionary effort. Many of God's children have promised to pray for us individually and for the missionary work to which we are called. The churches of Kansas and Oklahoma especially have been very enthusiastic, not only being immediately and deeply interested in the spiritual condition and need of the Japanese people, but, consistent therewith, doing something practical in sending them the gospel. They have given the largest offerings and in addition at least 15 people have pledged to give some amount regularly every month to the support of the Japanese work. I am encouraged and purpose to press on and prove God's promises faithful and true in the salvation of the Japanese. For several months Mrs. Ena C. Grubb of Ohio has accompanied me as my helper, and I trust all the saints will continue to remember us in prayer.

## Reports of Committees

### EXAMINING COMMITTEE

We recommend that:-

Clarence Dye be granted first year itinerant license and that he finish the local preachers reading course.

Samuel Bland be granted first year itinerant license

A. J. Sampson be granted first year itinerant license.

Chas. Fouts be granted second year itinerant license

Ural Hollenback be granted first year evangelistic license.

Gussie Trower, Walter Poole, Katie Nehmeyer, Lutie Kells, be granted renewal of Evangelistic license.

I. M. Lathrop join one of our local churches inasmuch as he hold local license.

E. H. Farris from United Brethren Church. be duly ordained.

I. J. Snyder be received on his credentials as an ordained elder and granted evangelistic license.

J. G. Williams, Nora Gehres, Chas. Eddy, and Oscar Coffman, be dropped from the Conference roll.

J. M. Bundy be dropped since he has united with another church.

A. R. Higgs be received on his credentials as an ordained elder.

George S. Baldwin join one of our local churches inasmuch as he holds local license.

Lee Pratt be duly ordained.

Elmer J. Clem be received on his credentials as a

preacher on trial according to Art, 77 of discipline and that he bring up the reading course.

G. W. Chamberlain, John Wallace, Paul Brichetto, John Shue, W. E. Bradley, John Coffin, John Teiffel. Oliver Barker, Samuel Moore be granted renewal of itinerant license.

Mrs. Lizzie Jones be received on credentials and be duly ordained.

Eliza Adams, Iva Myers, Elijah Fulkerson, J. O. Eacret, W. H. Hook, Grover Colter, Wayne Minton. Albert Harmon, S. P. Vanmeter, Jesse Whitecotton, and Thomas Brenton be referred to their Presiding Elder for examination and if he deems them worthy they be granted their respective license.

Frank Myers be duly ordained. Lillie F. Rodgers be duly ordained.

Bertha Decroes be granted evangelistic license.

Walter M. Hall from United Brethren Church be received and granted second year itinerant license.

#### WAYS AND MEANS COMMITTEE

I. We recommend that each member be assessed ten cents per month to help our worthy needy and bury our dead; said amount to be paid monthly to a beneficiary steward appointed by the pastor who shall make his report quarterly to a board of beneficiary trustees appointed or elected by the annual conference who shall have power to dispense said money at their discretion.

II. Inasmuch as tithing is scriptural, and according to the discipline of our church, we recommend that each pastor preach, practice and urge his members to tithe and with pencil and paper keep account with God. Said money to be deposited in the local church treasury.

III. We recommend that the pastors on their respective charges confer with the classes and decide on

a minimum amount to be paid to the Presiding Elder; said amount to be collected by the steward previous to quarterly meeting.

IV. We recommend that this conference in session appoint the standing committees who shall serve at the conference of 1915.

V. We recommend that our ministers and workers solicit and report subscriptions of a stated amount for the different needs of the foreign field.

VI. We recommend that these recommendations as accepted by this conference be read by the pastors at as early a date as possible before their classes and any explanation necessary be made and an exhortation to their strict observance be made.

VII. We recommend that each class hold at least one service for each of our institutions, and a special offering be taken for the same. We further recommend that the following dates be observed as nearly as possible for these special services:

Orphanage . . . . . third Sunday in November.

Rescue Work . . . . . first Sunday in January.

Bible School . . . . . first Sunday in March.

Iva May Infants Home . . . first Sunday in May.

Foreign Missions . . . . . first Sunday in July.

J. J. Mc Intosh,

Grace Daugherty,

H. G. Solomon,

Alice M. Hart, Committee.

#### AUDITING COMMITTEE

We, the Auditing Committee have examined the following reports and find them correct:

Conference minute report, Beneficiary treasurer's report, financial report of Bethel Holiness Orphanage, treasurer's report of Carlinville Camp Meeting, financial report of Beulah Rescue Home, Voice from Canaan, Bible School, Japanese Work, Foreign Mis-

sionary treasurer's report, and Conference treasurer's report.

Arthur Plunkett,  
John Higinbotham,  
A. D. Canary, Committee.

#### RESOLUTION COMMITTEE

1. Inasmuch as we have not been called on to mourn the loss by death of any of our official body, during the past year, be it therefore resolved that we extend our heartfelt thanks to our kind heavenly Father for His preserving care.

2. Whereas the clash of arms is resounding through the nations of the East and bringing destruction to the fathers and sons, and disturbing the peace and quietude of home and church, and whereas our own nation has realized the unreasonableness of such butchery without just cause, and that we have not been plunged into such conditions by a cry of war by our own nation, be it therefore resolved that we extend our appreciation to Almighty God and to our beloved nation for our peaceful condition, and our liberties to labor on for lost souls, undisturbed.

3. Inasmuch as the blessings of God has attended our labors and extended our borders to the raising up of foreign work in Central America, California and Japan, and supplying the same with earnest and efficient workers for the advancement of our work, be it therefore resolved that we stand by them with our earnest prayers and hearty support, and that the Secretary be instructed to send letters of greetings from this Conference to those representing the different foreign work.

Washington Sherman,  
Mary V. Myers,  
Flo G. Andrews, Committee.

# STATIONING COMMITTEE

## APPOINTMENTS—PASTORAL

### SOUTHERN INDIANA DISTRICT.

A. M. Ewing, Presiding Elder.

Anderson, Ind.

Hartsville,

Hope,

Thorntown,

Lebanon,

Shelton supplied

Frankfort,

Indianapolis,

Sullivan,

Carlisle,

Merom,

Kennard,

Benham,

Lawrenceburg,

Gaynorsville,

Noblesville,

Linton,

Midland,

Island City,

Flatrock,

Greensburg,

Antioch,

Sherman, Ky.

Frankton, Ind,

Harmony,

Seelyville,

Aurora,

North,

O. W. Barnes.

E. H. Farris.

E. H. Farris.

Paul Brichetto.

Paul Brichetto.

L. B. McKain.

Washington Sherman.

Lizzie Jones.

Geo. Huff.

Geo. Huff.

Geo. Huff.

Frank Hackleman.

To be supplied.

John Wallace.

John Wallace.

Edw. Bingaman.

A. D. Canary.

A. D. Canary.

A. D. Canary.

To be supplied.

Elmer Clem.

Elmer Clem.

To be supplied.

C. A. Fouts.

E. W. Wright.

E. W. Wright.

Albert Holcomb.

Albert Holcomb.

### NORTHERN INDIANA DISTRICT

W. G. Bogue, Presiding Elder.

Andrews,

Wabash,

Samuel Moore.

Lee Goins.

Three Oaks, Mich.  
 Bass Lake.  
 Elwood,  
 Logansport,  
 Tipton,  
 New London,  
 Michigantown,  
 Forest,  
 Kokomo,  
 Leisure,  
 Cambria,  
 New Carlisle,  
 Tyner,  
 Michigan City,

J. J. Summerhill.  
 To be supplied.  
 Edw. Schoeff.  
 Roscoe Earlywine.  
 Edw. Bingaman.  
 Sarah Plunkett.  
 John Higinbotham.  
 John Higinbotham.  
 J. W. Trout.  
 To be supplied.  
 E. A. Davis.  
 To be supplied.  
 E. C. Rhoades.  
 E. C. Rhoades

#### ILLINOIS AND MISSOURI DISTRICT

M. F. Pratt, Presiding Elder.  
 St. Louis, Mo.  
 East St. Louis, Ill.  
 Jerseyville, Ill.  
 Dow, Ill.  
 Effingham,  
 Robinson,  
 Onarga,  
 Charleston,  
 Paris,  
 Carlinville, Ill.  
 Springfield, Mo.,  
 Collinsville,  
 Casey,

M. F. Pratt.  
 Mary V. Myers.  
 Elmer Hanna.  
 Elmer Hanna.  
 B. S. Cole.  
 To be supplied.  
 A. R. Higgs.  
 Walter M. Hall.  
 Walter M. Hall.  
 Clyde Shearer and wife.  
 Harry Hosman.  
 Frank Myers.  
 To be supplied.

#### KANSAS AND OKLAHOMA DISTRICT

N. Bradshaw, Presiding Elder.  
 S. P. Vanmeter, District Evangelist.  
 Freeport, Kans.  
 Osawatomie "  
 El Dorado,  
 Gognac,

Earl Benjamin.  
 S. T. Vanmeter.  
 To be supplied.  
 J. L. Hipple.

Pleasantview, Okla.  
Lone Star, "  
Elmdale, "

Grace Daugherty.  
Thomas Willis.  
Thomas Willis.

## APPOINTMENTS—ADDITIONAL

### MISSIONARY

Superintendent of Missions in Central America,  
K. H. Jackson.

Superintendent of Schools in Central America,  
Professor Walter G. Henschen.

Evangelistic Instructor,  
Mrs. Rosemma B. Hunter.

Japanese Missionary,  
Lydia B. Abplanalp.

Holiness Bible School and Missionary Training Home,  
Carlinville, Ill.

Bible Teachers. Clyde Shearer, Martha Noggle.

High School and grades. William Pratt, May Smith.

Spanish, L. C. Trujillo.

Music, Lucy Halpin.

## APPORTIONMENT

The following amounts Conference asks the churches to raise for Apportionment this year.

Anderson, Ind.,	\$10.00	Leisure, Ind.,	\$9.00
Antioch, Ind.,	5.00	Logansport, Ind.,	9.00
Aurora, Ind.,	5.00	Michigantown, Ind.,	15.00
Benham, Ind.,	7.00	Michigan City, Ind.,	4.00
Carlisle, Ind.,	5.00	New Carlisle, Ind.,	8.00
Flatrock, Ind.,	3.00	New London, Ind.,	12.00
Frankfort, Ind.,	38.00	Tyner, Ind.,	8.00
Frankton, Ind.,	8.00	Tipton, Ind.,	10.00
Gaynorsville, Ind.,	8.00	Three Oaks, Mich.	7.00
Greensburg, Ind.,	8.00	Wabash, Ind.,	8.00
Hartsville, Ind.	20.00	Athens, Ill.,	2.00
Hope, Ind.,	5.00	Carlinville, Ill.,	20.00
Indianapolis, Ind.,	6.00	Charleston, Ill.,	5.00
Kennard, Ind.,	3.00	Effingham, Ill.,	3.00
Lawrenceburg, Ind.,	8.00	East St. Louis, Ill.,	15.00
Lebanon, Ind.,	5.00	Jerseyville, Ill.,	5.00
Linton, Ind.,	8.00	Onarga, Ill.,	5.00
Merom, Ind.,	5.00	St. Louis, Mo.,	25.00
Noblesville, Ind.,	8.00	Dow, Ill.,	5.00
North, Ind.,	4.00	Casey, Ill.,	5.00
Sullivan, Ind.,	10.00	Robinson, Ill.,	10.00
Seeleyville, Ind.,	4.00	Springfield, Mo.,	5.00
Sherman, Ky.,	6.00	Collinsville, Ill.,	5.00
Thorntown, Ind.,	5.00	Paris, Ill.	3.00
Andrews, Ind.,	5.00	Osawatomie, Kans.,	20.00
Bass Lake,	4.00	Eldorado, Kans.,	15.00
Cambria, Ind.,	4.00	Freeport, Kans.,	20.00
Elwood, Ind.,	37.00	Gognac, Kans.,	8.00
Forest, Ind.,	7.00	Pleasant View, Okla.	35.00
Kokomo	30.00	Elmdale, Okla.,	5.00
Lone Star, Okla.,	6.00		

This report was received and referred to Committee on Minutes.

## Members of Conference

### ORDAINED.

1895	Chas. C. Brown	Carlinville, Illinois
1896	Wm. G. Bogue	Frankfort, Indiana
1896	J. J. McIntosh	Tipton, Indiana
1898	J. W. Trout	Elwood, Indiana
1898	N. Bradshaw	Winfield, Kansas
1899	G. C. Middleton	Olivet, Illinois
1900	E. C. Rhoades	Tyner, Indiana
1901	H. G. Solomon	Hope, Indiana
1902	C. E. Ellsworth	Charlottesville, Indiana
1902	M. F. Pratt	St. Louis, Missouri
1903	J. R. Ogle	Sheridan, Indiana
1904	John W. Clark	Frankfort, Indiana
1904	W. J. Webster	Richards, Colorado
1904	D. C. Shearer	Carlinville, Illinois
1906	Earl Benjamin	Argonia, Kansas
1907	B. H. Hines	Anderson, Indiana
1908	Edward Schoeff	Elwood, Indiana
1908	A. M. Ewing	Frankfort, Indiana
1908	W. S. Jewell	Sullivan, Indiana
1909	W. E. Ketchum	Greensburg, Indiana
1909	A. D. Canary	Linton, Indiana
1909	Thos. Willis	Carmen, Oklahoma
1910	E. A. Davis	Sharpsville, Indiana
1910	J. H. Julian	Elwood, Indiana
1910	L. C. Force	Monterey, Indiana
1910	Jacob Crusier	Linton, Indiana
1910	D. L. Sailors	Lawrenceburg, Indiana

1911	E. C. Burroughs	Sullivan, Indiana
1911	John Higinbotham	Frankfort, Indiana
1911	E. L. Pendry	Georgetown, Illinois
1911	A. H. Plunkett	Elwood, Indiana
1911	Walter Spray	Frankfort, Indiana
1911	Elmer Tishner	Noblesville, Indiana
1912	Samuel E. Lacy	St. Louis, Missouri
1912	Samuel T. Van Meter	Olivet, Illinois
1912	J. J. Summerill	Watervliet, Michigan
1912	Ora C. Myers	East St. Louis, Illinois
1912	John W. Ross	Alva, Oklahoma
1912	J. E. Barrow	Sullivan, Indiana
1912	K. H. Jackson	Livingston Guatemala, C. A.
1912	Oliver Toney	Frankfort, Indiana
1912	C. E. Culberson	St. Louis, Missouri
1913	Perry Runnels	New Carlisle, Indiana
1913	Lee Goins	Elwood, Indiana
1913	Edward Bingaman	Noblesville, Indiana
1913	Hattie Dunkelberger	Three Oaks, Michigan
1913	Katie Dunkelberger	Three Oaks, Michigan
1913	Ross Earlywine	Logansport, Indiana
1913	Maggie Hull	Alva, Oklahoma
1913	Alma Shearer	Carlinville, Illinois
1913	Lucinda Rhoads	Tyner, Indiana
1913	Alice M. Hart	Carlisle, Indiana
1913	Mary V. Myers	East St. Louis, Illinois
1913	Lillie Oliver	St. Louis, Missouri
1913	Henry F. Roberts	Elwood, Indiana
1913	Lillian Roberts	Elwood, Indiana
1913	B. S. Cole	Effingham, Illinois
1913	Washington Sherman	Frankfort, Indiana
1913	J. A. Akers	Harmony, Indiana
1913	George Huff	Sullivan, Indiana
1913	Lydia Abplanalp	Spades, Indiana
1914	Elmer J. Clem	Greensburg, Indiana
1914	Lizzie Jones	Greenwood, Indiana
1914	Lee Pratt	Oskaloosa, Iowa

1914	A. R. Higgs	Onarga, Illinois
1914	Lillian F. Rodgers	Crittenden, Kentucky
1914	I. J. Snider	Springfield, Ohio
Ex 1914	E. H. Farris	Hartsville, Indiana
1914	Jessie Whitecotton	Anderson, Indiana
1914	Frank Myers	Collinsville, Illinois
1914	Anna Hines	Anderson, Indiana
1914	Grace Daugherty	Dacoma, Oklahoma
1914	Sarah Plunkett	New London, Indiana
1914	Richard McNew*	Alva, Oklahoma
1914	Harry Vander Veen*	Alva, Oklahoma

\*Received as ordained on trial for one year.

### ITINERANTS.

1909	Oliver Barker	
1910	J. A. Michael	Alva Oklahoma
1910	John Baxter	Dacoma, Oklahoma
1911	C. M. Clements	Clarinda, Iowa
1912	John Coffin	Carlinville, Illinois
1912	John Teiffel	Effingham, Illinois
1912	W. E. Bradley	Grand Rapids, Michigan
1913	G. W. Chamberlain	Kokomo, Indiana
1913	Grover Colter	Kokomo, Indiana
1913	J. O. Eacret	Indianapolis, Indiana
1913	John Wallace	Lawrenceburg, Indiana
1913	Wayne Minton	Linton, Indiana
1913	Albert Harmon	St. Louis, Missouri
1913	S. P. Van Meter	Zelma, Oklahoma
1913	Elijah Burge	Perth, Kansas
1913	Paul Brichetto	Indianapolis, Indiana
1913	W. A. Sexton	St. Louis, Missouri
1913	Samuel Moore	Wabash, Indiana
1913	J. H. Overmeyer	Tipton, Indiana
1914	Clarence Dye	Bicknel, Indiana
1914	A. J. Sampson	
1914	Samuel Bland	Hamlin, Arkansas
1914	Chas. Fouts*	Elwood, Indiana

1914	Walter M. Hall•	Charleston, Illinois
1914	Thomas Brenton	Seelyville, Indiana
1914	L. Hipple	New Ulysses, Kansas

•Received this year but into second year itinerancy.

#### EVANGELISTS.

1900	Flora Harney•	Carlisle, Kentucky
1902	Phoebe Ellsworth•	Charlottesville, Indiana
1903	Adda Scott•	Elwood, Indiana
1909	Jennie Lee	Chicago, Illinois
1909	Leona Van Meter•	Olivet, Illinois
1911	Birdie Canary•	Linton, Illinois
1911	Deborah Wharton•	St. Louis, Missouri
1912	Ethel Lee	St. Louis, Missouri
1912	Walter Poole	Carlinsville, Illinois
1913	Flo Gookins Andrews	Carlinsville, Illinois
1913	W. H. Hook	Hope, Indiana
1913	Katie Nehmeyer	Wabash, Indiana
1913	Lutie Kells	Crittenden, Kentucky •
1913	Gussie Trower	St. Louis, Missouri
1913	Elijah Fulkerson	Linton, Indiana
1913	Francis Spain	St. Louis, Missouri
1913	Iva Mahres	Sullivan, Indiana
1913	Clara Mahres	Sullivan, Indiana
1913	Flora Mahres	Sullivan, Indiana
1913	Edward Cornelius	Dow, Illinois
1913	Eliza Burge	Hopeton, Oklahoma
1913	Bertha De Croes	Indianapolis, Indiana
1914	Ural Hollenback	Indianapolis, Indiana
1914	Iva Myers	Collinsville, Illinois

•Perpetual evangelistic license.

## **STATISTICAL REPORTS**



# NUMERICAL REPORT

Class	Pastor	Members on roll	Last Conference	Increase	Decrease
Athens, Ill.	John Coffin	14	8	6	
Anderson, Ind.	B. W. Barns	28	31		3
Antioch,	W. E. Ketchum	16	18		2
Andrews,	A. D. Canary	8	5	3	36
Benham,	Bert Halcomb	19	20	1	
Bass Lake,	L. C. Force	10	14		4
Carlisle,	George Huff	20	28		8
Cambria,	J. H. Kelley	8	23		15
Carlinville, Ill.	Alma Shearer	52	55		3
Collinsville,	Frank Myers	24		24	
Charleston,	S. T. Van Meter	26			10
Casey,	John C. Teifel	26		26	
Dow,	Elmer Hanna	20	11	9	
Effingham,	John C. Tiefel	28	23	5	
East St. Louis	Mary V. Myers	53	22	31	
Elwood, Ind.	Adda Scott	77	82		11
Forest,	Roscoe Earlvwine	20	23		3
Frankton,	Lee Goins	22	20	2	
Flat Rock,	Bert Halcomb	10	10		
Frankfort,	W. G. Bogue	100	115		15
Greensburg,	D. L. Sailors	34	20	14	
Gaynorsville,	D. L. Sailors	18	21		3
Hope,	W. Ketchum	16	34		18
Hartsville,		51	52		1
Indianapolis,	J. O. Eacret	38	29	9	
Kokomo,	J. W. Trout	90	45	45	
Kennard,	George Lee	8	11		3
Harmony,	J. A. Akers	20	24		4
Logansport,	Edward Schoeff	27	26	1	

Revivals conducted	Assisted in	Converted or sanctified	Prayed with for healing	Baptised	Pastoral calls
1		8	3		50
2	2	20	8		36
1	2	3			60
1		13	4		40
1		5	1		25
2		2	2		40
1		18			60
					10
1		30	21		50
2	6	125	25		38
2	6	26	7	4	55
	2	16			52
9			2	11	60
2	2	9	7		104
1	3	108	35	7	68
3		20	23		223
3	2	25	8		62
1	1	13	11		45
1		8	1		6
3	3	57	20		200
2		31	8	6	79
2		6	4		60
1	2	9	3	2	70
1	1	6	8		72
3		54	25		168
2		200	2	13	100
1		7		1	35
	1	6	4	1	25
3		50	8	6	370

Class	Pastor	Weddings	Funerals	Books read
Athens, Ill.	John Coffin			3
Anderson, Ind.	B. W. Barns	1		2
Antioch,	W. E. Ketchum			
Andrews,	A. D. Canary		1	
Benham,	Bert Halcomb			4
Bass Lake,	L. C. Force			
Carlisle,	George Huff			
Cambria,	J. H. Kelley			5
Carlinville, Ill.	Alma Shearer		2	5
Collinsville,	Frank Myers		2	3
Charleston,	S. T. Van Meter			3
Casey,	John C. Tiefel			
Dow,	Elmer Hanna			
Effingham,	John C. Tiefel	2		9
East St. Louis,	Mary V. Myers		9	
Elwood, Ind.	Adda Scott	1	1	
Forest,	Roscoe Earlywine	1	1	10
Frankton,	Lee Goins			5
Flat Rock	Bert Halcomb			6
Frankfort,	W. G. Bogue	4	8	6
Greensburs,	D. L. Sailors	1		5
Gaynorsville,	D. L. Sailors		1	
Hope,	W. Ketchum		1	4
Hartsville,				
Indianapolis,	J. O. Eacret	3	3	5
Kokomo,	J. W. Trout		1	
Kennard,	George Lee			1
Harmony,	J. A. Akers	1	4	
Logansport,	Edward Schoeff			7

Number of pages read	Subscriptions for VOICE	Number local preachers	Number home missionaries	Sunday School	Average attendance
400	4	2	1	42	26
600				23	18
				17	10
1,000				20	18
				75	60
				34	35
1,030	1	5	2	68	65
500				125	75
500	26	3	4	65	46
				25	25
	5	1		26	23
2,248				21	21
		5	5	90	35
		2		100	90
1,510	1			25	20
1,500				35	30
1,300				16	12
900				90	75
1,000	6	1	5	34	16
		1	1	25	20
892			1	54	26
	2	3	2	50	35
1,302	5	5	3	56	30
		6	2	125	75
300				21	15
	1				
947	6	1	1	90	75

Class	Pastor	Members on roll	Last Conference	Increase	Decrease
Linton, Ind.	J. H. Cruser	43	31	12	
Leisure,	Lee Goins	18	22		3
Lebanon,	Paul Brichetto	9	10		1
Lawrenceburg,	John Wallace	29	23	6	
Merôm,	George Huff	25	24	1	
Michigan City,	K. Dunkelberger	20	7	13	
Michigantown,	J. Higinbotham	52	28	24	
New Carlisle,	E. C. Rhoades	19	19		
Noblesville,	Ed. Bingaman	21	19	2	
New London,	J. Higinbotham	30	59		29
Onarga, Ill.	A. R. Higgs	17	10	7	
Paris,	M. M. Hall	15		15	
Robinson,	Edward Cornelius	78		78	
Sullivan, Ind.	George Huff	35	38		3
St. Louis, Mo.	M. F. Pratt	123	111	12	
Springfield, Mo.	Harvey Hosman	33		33	
Sherman, Ky.	D. L. Sailors	20	22		2
Tipton, Ind.	Ed. Bingaman	21	23		2
Thorntown,	Lula Bowman	9	8	1	
Tyner,	E. C. Rhoades	23	26		3
Three Oaks, Mich.	J. J. Summerill	17	20		3
Wabash, Ind.	A. D. Canary	24	24		
Eldorado, Kans.	Isaac Smith	23	22	3	2
Elmdale, Okla.	W. A. Quinn	21			
Freeport, Kans.	Earl Benjamin	43	40	3	
Gognac, Kans.	J. L. Hipple	21			
Hopeton, Okla.	Grace Daugherty	72	57	25	11
Lone Star, Okla.	Thos. Willis	11			
Osawatomie,	N. Bradshaw, P. E.	57	28	39	10

Revivals Conducted	Revivals Assisted In	Converted or Sanctified	Prayed with for healing.	Baptised	Pastoral calls
4		65	14	4	361
2	1	34	1		18
1	1	28	2		97
1		3	6	5	175
2	1	20	6		30
1		60	5		30
1			12	15	216
3	3	12	24	4	60
1		5			79
1	1	15	8		54
2	3	40	18		128
1	1	170			101
2	4	20	1	31	16
3	4	220	150	14	60
1	2	86	9	3	437
1		6	3	8	65
		16	9		69
	2	9			69
1		40	14	2	
1	2	9	2		85
2		10	20		105
1					150
	1	1			
		10	1		11
	2	8			19
3	2	137	8		75
					201
1		50			3

Class	Pastor	Weddings	Funerals	Books read
Linton, Ind.	J. H. Cruser		8	5
Leisure,	Lee Goins			5
Lebanon,	Paul Brichetto			7
Lawrenceburg,	John Wallace	1	2	8
Merom,	George Huff			
Michigan City,	K. Dunkelberger			
Michigantown,	J. Higinbotham	4	6	8
New Carlisle,	E. C. Rhoades			5
Noblesville,	Ed. Bingaman		3	
New London,	J. Higinbotham			5
Onarga, Ill.	A. R. Higgs			8
Paris,	W. M. Hall	2	1	1
Robinson,	Ed. Cornelius			
Sullivan, Ind.	George Huff	2	2	4
St. Louis, Mo.	M. F. Pratt	6	4	16
Springfield,	Harry Hosman		2	1
Sherman, Ky.	D. L. Sailors			
Tipton, Ind.	Ed. Bingaman			11
Thorntown,	Lula Bowman		1	
Tyner,	E. C. Rhoades		1	
Three Oaks, Mich.	J. J. Summerill			4
Wabash, Ind.	A. D. Canary			6
Eldorado, Kans.	Isaac Smith			
Freeport,	Earl Benjamin	1	3	
Gognac,	J. L. Hipple		1	5
Osawatomie,	N. Bradshaw, P. E.			
Elmdale, Okla.	W. A. Quinn			4
Hopeton,	Grace Daugherty		2	4
Lone Star,	Thos. Willis			

Number of pages read	Subscriptions for Voice	Number local preachers	Number Home Missionaries	Sunday school scholars	Average attendance
1,000	6	1		70	50
1,500				40	30
1,250	1		1	12	15
1,920	4	2		24	16
		2	2		
		1	1	24	18
6,000	3			50	30
987					
				25	14
2,000		1		25	17
3,167	5			28	19
300	5	1		22	15
				88	
800	1		1	30	20
1,421	69	9	11	80	50
250		2	3	40	30
	2	3		33	20
1,396				36	12
	10			20	17
	13	1		49	26
5,000				20	14
1,500		2	1	25	20
				28	20
600				30	20
				49	28
650				35	28
	1	4		100	82
			1	88	28
				35	20

# NUMERICAL TOTALS

	Members on roll	Last conference	Increase	Decrease	Revivals conducted	Assisted In	Converted or sanctified
This year	1,812				88	67	1,955
Last year	1,588				35	81	1,418
Increase	224				53		542
Decrease						14	

Prayed with for healing	Baptised	Pastoral calls	Weddings	Funerals	Books read	Pages read
535	138	4,006	30	74	190	49,670
511	77	4,068	19	63	245	48,768
44	61	338	1	11		
					55	2,098

	Subscriptions for Voice	Local preachers	Home missionaries	Sunday school	Average attendance
This year	178	64	45	2,415	1,635
Last year	290	62	33	2,008	1,388
Increase		2	16	410	247
Decrease	112				

# FINANCIAL STATISTICS

Class	Pastor	Money raised for Sunday School	Money raised for Apportionment	Foreign Missions
Athens, Ill.	John Coffin			
Anderson, Ind.	O. W. Barnes	\$22.79	\$5.00	23.04
Andrews,	A. D. Canary	5.62	4.00	4.16
Antioch,	W. E. Ketchum	9.80	4.00	12.00
Benham,	Bert Holcomb	4.95	4.75	10.00
Bass Lake,	L. C. Force	4.00	3.00	1.82
Charleston, Ill.	S. T. Van Meter	3.08	5.00	.65
Carlisle, Ind.	George Huff		3.00	18.77
Calvary,	A. M. Ewing			
Cambria,	J. N. Kelly	39.25	2.00	
Carlinville, Ill.	Alma Shearer.	21.51	20.00	181.17
Casey,	John C. Teifel	9.00		5.20
Collinsville,	Frank Myers	75.00		.85
Dow,	Elmer Hanna	42.07		12.19
Elwood, Ind.	Adda Scott	57.60	37.50	48.14
East St. Louis, Ill.	Mary Myers	52.92	10.00	28.28
Effingham,	John Teifel	15.00	2.00	4.00
Frankton, Ind.	Lee Goins	11.36	5.50	5.00
Forest,	Roscow Earlywine	4.81	2.75	5.27
Flat Rock,	Bert Holcombe	5.25		
Frankfort,	W. G. Bogue	82.61	34.25	20.00
Gaynorsville,	D. L. Sailors	4.84	4.50	
Greensburg,	D. L. Sailors	12.90	1.75	2.51
Hartsville,	Earnest E. Spaugh	16.43	15.25	100.00
Hope,	W. E. Ketchum	24.00	3.50	10.00
Hillisburg,	J. H. Julian			
Indianapolis,	J. O. Eacret	20.60	6.00	17.00
Jerseyville, Ill.	Elmer Hanna	24.54		.80
Jefferson, Ind.	J. N. Kelley			
Kennard,	George Lee	5.83	1.00	

Home Missions	Orphanage	Bible School	Rescue Work	Beneficiary	Camp Meeting Fund	P. F.	Pastor
							\$52.00
	2.41			2.00		20.16	129.86
				4.40		9.75	64.66
	3.00			3.30		19.45	52.61
		25.00	21.25	3.50		17.18	47.83
	16.95	2.10				20.00	16.35
	1.00	.90	1.00			20.00	254.84
1.00	6.00	6.00	12.50	3.25	7.00	21.00	145.50
						9.21	42.27
	18.47	29.94	19.46	12.04	5.00	60.00	429.15
	.10	.03				20.00	40.00
						4.00	200.00
	3.01	.75	4.00			21.80	226.20
25.67	8.65	3.42	11.42	6.00		53.0	419.02
			9.05			31.6	503.05
6.16	1.00	1.00				9.00	133.40
3.22						21.31	91.29
				7.63		18.80	177.45
						9.15	21.15
	9.77	5.63	6.90	11.70		57.15	695.38
				2.20		24.07	139.26
	2.69	2.28	2.56	4.25		17.75	105.02
22.30	10.00	12.50	4.00	2.20		39.25	200.00
		1.00		3.80		16.69	57.58
	3.00		2.00	12.50		23.72	87.93
	10.00	.25	1.17	.20		14.46	153.42
						1.75	37.50
						2.05	40.62

Class	Pastor	Evangelist	Improvement	General Expenses
Athens, Ill.	John Coffin,	\$12.52		5.08
Anderson, Ind.	O. W. Barnes	14.25	63.00	146.86
Andrews,	A D. Canary	14.56	16.30	12.66
Antioch,	W. E Ketchum	8.05		15.65
Benham.	Bert Holcomb		5.00	2.50
Bass Lake,	L. C. Force	33.00		
Charleston, Ill.	S. T. Vanmeter	5.00		4.08
Carlisle, Ind.	George Huff	42.12		17.45
Calvary,	A. M. Ewing			
Cambria,	J. N. Kelly	8.14	25.00	
Carlinville, Ill.	Alma Shearer	76.54		65.59
Casey,	John C. Teifel	27.00		
Collinsville,	Frank Myers	27.02	57.61	272.00
Dow.	Elmer Hanna			13.40
Elwood, Ind.	Adda Scott	190.79	59.82	152.47
East St. Louis Ill.	Mary Myers	73.83	113.70	414.54
Effingham	John Teifel	4.16		100.00
Frankton, Ind.	Lee Goins	59.55		3.40
Forest,	Roscoe Earlywine	29.00	66.00	22.00
Flat Rock,	Bert Holcombe	27.00		
Frankfort,	W. G. Bogue	212.34	70.40	225.03
Gaynorsville,	D. L. Sailors	46.65	23.00	8.00
Greensburg,	D. L. Sailors	42.00	50.50	25.65
Hartsville,	Earnest E. Spaugh	64.24		85.00
Hope,	W. E. Ketchum	34.64	18.70	29.45
Hillisburg,	J. H. Julian			
Indianapolis,	J. O. Eacret	30.24		174.33
Jerseyville, Ill.	Elmer Hanna	17.77	28.69	
Jefferson, Ind.	J. N. Kelley	15.00		
Kenard,	George Lee			47.58

Iva May Home	Total receipts for year	Value church property	Value increase	Decrease	Indebtedness last Conference	Indebtedness now
	569.60					
	279.94	1700.00	10.00			
	136.01	1500.00	16.30			
	119.93					
	132.40	500.00		150.00		
	97.22	1000.00				
	366.15	88.00	18.30		25.00	
	282.53	1100.00				
		300.00				
	125.87	1000.00				
4.33	943.20	25.00		125.00		
	101.90					
	636.40	50.00				
	323.40	150.00				
	1073.55	1500.00			24.00	
	1242.65	155.00				
1.00	273.78	1500.00			4.38	3.50
	200.24	200.00				
	333.71	650.00	60.00			
	62.55	400.00				
	1439.06	1850.00	100.00		25.00	160.00
	250.52	1200.00				
	200.02	800.00				2.60
2.15	533.03					
	199.38	1670.70	18.70			
		500.00	150.00		208.00	300.00
	378.21				10.00	
	207.49					
	54.31	250.00				75.00
	97.08					

Class	Pastor	Money raised for Sunday School	Money raised for Apportionment	Foreign Missions
Kokomo, Ind.	J. W. Trout	\$61.02	10.00	37.60
Kensal,	No Pastor			
Lawrenceburg,	John Wallace	16.88	8.00	127.16
Leisure,	Lee Goins	15.83	5.40	11.25
Lebanon,	Paul Brichetto	10.27	5.00	8.16
Linton,	J. H. Cruser	10.73		14.89
Logansport,	Edward Schoeff	46.87	5.75	24.17
Michigantown,	J. F. Higinbotham	19.70	11.00	14.98
Mich. City,	K. & H. Dunkelberger	14.00	2.00	
Merom,	George Huff		5.00	4.30
New Carlisle,	E. C. Rhoades		8.00	13.86
Noblesville,	Ed Bingaman	14.60	2.60	3.70
New London,	J. F. Higinbotham	21.30	9.60	6.44
Onarga, Ill.	A. R. Higgs	4.30	1.40	.85
Paris,	W. M. Hall	6.00		
Spring, Mo.	Harry Hosman			
St. Louis,	Melvin Pratt	46.08	25.00	204.59
Sullivan, Ind.	George Huff	13.05	4.00	3.00
Tipton,	Ed Bingaman	9.95	.50	3.00
Thorntown,	Mrs. Lulu Bowman	40.20	6.00	10.00
Tyner,	E. C. Rhoades	19.41	6.00	14.26
Harmony,	J. A. Akers			
Wabash,	A. B. Canary	13.97	4.50	1.65
Three Oaks, Mich.	J. J. Summerill	28.34	7.00	3.00
Eldorado, Kans.	Isaac Smith	16.58	16.00	1.31
Elmdale, Okla.	W. A. Quinn	13.00	1.00	7.83
Freeport, Kans.	Earl Benjamin	39.47	10.00	41.00
Gognac, Kans.	J. L. Hipple	10.00		1.50
Hopeton, Okla.	Grace Daugherty	37.14	25.00	96.30
Lone Star, Okla.	Thos. Willis	4.92		2.66
Osaw., Kans.	N. Bradshaw, P. E.	32.23	10.00	12.30

Home Missions	Orphanage	Bible School	Rescue Work	Beneficiary	Camp Meeting Fund	P. E.	Pastor
			88.00	32.15	2.50	36.00	459.70
6.25	3.89	2.15	8.77	2.70		36.81	530.00
	5.00			5.00		17.45	168.91
			.55	2.40	1.00	11.55	65.43
	10.60		7.70	4.75		27.50	267.83
	3.00			3.50		26.00	469.90
1.00	18.50	5.20	1.50	5.50	4.50	26.10	300.00
				.30		14.91	52.31
				2.40		9.91	61.50
	56.71	73.71	5.00			20.00	157.36
	1.00	.35	.10	6.35	1.00	15.60	157.25
		5.00			2.00	29.75	113.17
	1.20	1.26	.37	.60		11.15	125.90
							15.00
						34.20	9.00
20.75	34.00	11.10	129.48	17.60	4.00	40.00	385.00
			5.00			29.10	223.00
	1.20	.50	5.40	3.17		22.00	162.67
				2.40		10.67	48.08
	5.30	1.50	1.75	17.65		21.41	158.32
						26.75	
2.20	.65	.65	2.50	.60		17.26	232.95
	4.50	1.50	2.00	6.30		33.60	100.00
	2.50	15.00	35.00	27.00		36.00	
						7.51	7.50
	7.00		3.00			38.00	207.18
						17.41	27.46
	25.20	18.00	20.00	31.20		40.73	237.92
					2.50	1.91	8.10
	5.00		9.40			40.00	

Class	Paster	Evangelist	Improvement	General Expenses
Kokomo, Ind.	J. W. Trout	166.00	25.00	107.37
Kensal, Ind	No Pastor			
Lawrenceburg	John Wallace	49.96	41.68	84.80
Leisure, Ind.	Lee Goins		135.02	
Lebanon,	Paul Brichetto	60.25	3.45	23.07
Linton,	J. H. Cruser			62.12
Logansport,	Edward Schoeff	129.94		147.18
Michigantown,	J. F. Higinbotham	133.00	9.00	48.52
Mich. City, K. & H. Dunkelberger				120.00
Merom Ind.	George Huff	2.15		89.70
New Carlisle, E. C. Rhoades				13.50
Noblesville, Ed. Bingaman		12.50	42.50	10.25
New London, J. F. Higinbotham		45.62	31.35	55.77
Onarga, Ill. A. R. Higgs				30.00
Paris, Ill. W. M. Hall				
Springfield, Mo. Harry Hosman		100.00		50.00
St. Louis, Mo. Melvin Pratt		165.21	90.00	559.63
Sullivan, Ind. George Huff		80.00		17.40
Tipton,	Ed Bingaman	67.00	2.50	15.00
Thorntown,	Mrs. Lulu Bowman	43.76	23.00	
Tyner,	E. C. Rhoades	25.12	10.30	71.71
Harmony,	J. A. Akers			
Wabash,	A. D. Canary	12.00	29.50	16.50
III Oaks, Mich. J. J. Summerill		20.25	20.00	256.46
Eldorado, Kans. Isaac Smith		40.00		10.00
Elmdale, Okla. W. A. Quinn		9.74	30.00	9.18
Freeport, Kans. Earl Benjamin		92.44	25.00	15.00
Gognac, Kans. J. L. Hipple		60.00		10.00
Hopeton, Okla. Grace Daugherty		287.00	20.00	48.00
Lone Star, Okla. Thos. Willis				
Osawatomie, Kans. N. Bradshaw,		147.75		247.36

Iva May Home	Total receipts for year	Value church property	Value increase	Decrease	Indebtedness last Conference	Indebtedness now
	942.43	1650.00			889.93	680.12
		300.00				
	612.50	1000.00			271.88	241.80
	367.11	1200.00				
	191.13	500.00				
	414.22	600.00				200.00
	856.08	80.00				
1.50	600.00	800.00				
	203.55					
	165.96					9.00
	348.14	1000.00				
.26	267.09	1000.00			300.00	300.00
	320.50	1200.00	31.35			
.46	183.58	1000.00				
	21.00					
	193.20	9.00	6.00			
4.00	1744.44	200.00	150.00			
	374.55	1400.00			208.00	208.00
.10	292.99	900.00		100.00		
	232.85					
	664.70	1000.00			300.00	196.00
	26.75					
	233.93	500.00				135.00
2.00	494.04	650.00	50.00		136.00	25.00
	199.39	1000.00				
	91.79	36.00	36.00			
	587.09	800.00			205.00	97.00
	126.37					
	886.54	1935.00	20.00			
	20.13					
5.00	516.06					

## FINANCIAL TOTALS

	Amount raised for Sunday School	apportionment	Foreign Missions	Home Missions	Orphanage	Bible School
This year	1168.54	364.50	1224.61	55.57	281.30	226.72
Last year	957.54	410.40	519.65	87.33	407.41	112.34
Increase	211.00		704.96			114.38
Decrease		45.90		31.76	126.11	126.11

Rescue Work	Beneficiary	Camp Meeting Fund	P. E.	Pastor	Evangelist	Improvement
340.83	254.64	29.50	1281.86	9036.58	2373.10	1198.02
375.80	213.55	233.26	1270.45	8170.39	2253.26	1669.38
	41.09		11.41	866.19	1619.90	
34.97		203.79				471.36

## FINANCIAL TOTALS

	General Expenses	Iva May Home	Total receipts for year
This year	4188.26	20.86	21907.30
Last year	4040.50	35.75	20977.90
Increase	147.76		929.40
Decrease		14.96	

Value church property	Value increase	Decrease	Indebtedness last Conference	Indebtedness now
38928.70			3717.98	2652.92
40250.76				
1322.06				1065.06

## EVANGELISTIC REPORT

	Meetings conducted	Meetings assisted in	Sermons preached	Converted or sanctified	Prayed with for healing
W. A. Sexton,		14	94	151	60
John W. Clark,	3	2	50	110	18
Hattie Dunkelberger,	1	1	22	4	4
Katie Dunkelberger,	1	1	52	6	4
B. H. Hines,		3	55	20	9
Mrs. Anna Hines,		3	49	20	8
John Wallace,	3	3	70	70	14
Lucinda Rhoades,		2	35		
John W. Ross,	12	3	355	222	40
W. E. Bradley,	7		178	48	
C. E. Ellsworth,	2	4	35	20	6
A. L. Pratt,	3		99	60	
F. N. Myers,		6	92	125	25
Walter Poole,	5		100	35	6
R. E. Tishner,		2	40	10	3
W. S. Jewell,	2		128	15	23
S T. VanMeter,	4	6	183	235	6
W. C. Canary,	6	1	112	53	4
Oliver Toney,	2	1	65	15	2
H. G. Solomon,	9	2	159		
Mary V. Myers,		3	175	45	38
Gussie Trower,		3	23	11	9
J. R. Ogle,		3	20		
Albert Harmon,		3	55	46	5
C. C. Brown,			50	115	10
John H. Julian,	3		64	61	
Sarah Plunkett,		5	15	20	
Arthur Plunkett,	8		130	25	8
G. C. Middleton,	2	2	65	15	4

Baptised	Classes organized	Subscriptions for VOICE	Marriages	Funerals	Books read	Number of pages
				1	2	625
				3	10	2,231
		9	1		8	1,430
		1			6	810
					4	3,703
			1		4	2,077
	1					
			1		3	800
32						
					5	800
				1	10	4,000
				2	3	500
	1					
					4	525
			6	8		
4		30				700
		9		3	3	125
	1			9		250
					28	2,800
						500
		5			3	500
					2	250
			1	2	3	1,063
					4	830

	Miles traveled	Missions	Rescue work	Orphanage work
W. A. Sexton,	510			
John W. Clark,	1,261	\$11.25		
Hattie Dunkelberger,	60			
Katie Dunkelberger,	60			
B. H. Hines,	697			
Mrs. Anna Hines,	697			
John Wallace,	1,400			
Lucinda Rhoades,	300			
John W. Ross,	1,200			
W. E. Bradley,				
C. E. Ellsworth,	1,032			
A. L. Pratt,	3,000		\$13.60	
F. N. Myers,	2,000	.85		
Walter Poole,	950			
R. E. Tishner,	165			
W. S. Jewell,	600			
S. T. VanMeter,	900			
W. C. Canary,	1,520			
Oliver Toney,	850			
H. G. Solomon,				
Mary V. Myers,	1,000			
Gussie Trower,	390	\$25.85		
J. R. Ogle,	700			
Albert Harman,	805			
C. C. Brown,	2,000			
John H. Julian,	300			
Sarah Plunkett,	300			
Arthur Plunkett,	500			
G. C. Middleton,	756			

	Meetings conducted	Meetings assisted in	Sermons preached	Converted or sanctified	Prayed with for healing
Francis Spain	2	2	65	15	4
Alice M. Hart		2	19		3
Deborah Wharton		1	35	20	50
Katie Nemyer			10	2	12
Sam Moore			33	6	13
Charles Culbertson			97	30	
S. E. Lacy	2	5	33	45	2
Edward Cornelius		9	92	223	
E. A. Davis	2		48	44	2
H. F. Roberts	5		108	67	12
Lillian Roberts	3		20	21	7
G. W. Chamberlin		3	30	28	6
Mahres Sisters		25		115	18
Eliza Burge			7		
Maggie Hull		2	80	20	
R. J. McNew	3	1	150	50	7
W. J. Webster	6	2	210	165	5
Thos. Willis	2		50	18	1
S. P. VanMeter	2	4	65	36	4

Baptized	Classes organized	Subscriptions for Voice	Marriages	Funerals	Books read	Number of pages read
9	1	24	1		4	250
31	1	2			2	900
2		3			1	200
15					3	800
					5	900
					2	1,500
				2		
				6		
		1	1		3	
				10	13	2,340
					2	600
			2	2	6	1,110
5			2		4	300
14	1	50		3	5	875
8	1				1	300
8	1				5	1,200

	Miles traveled	Missions	Rescue work	Orphanage
Francis Spain	489		\$39.00	
Alice M. Hart				
Deborah Wharton	750		\$209.00	\$2.00
Katie Neymer	100		\$7.00	
Sam Moore	282			
Charles Culbertson	600			
S. E. Lacy	1,176			
Edward Cornelius	1,800			
E. A. Davis	1,193			
H. F. Roberts			\$4.00	
Lillian Roberts			\$4.75	
G. W. Camberlin	1,131	\$15.00		
Mahres Sisters	2,680			
Eliza Burge	800			\$10 00
Maggie Hull	500		\$5.00	\$4.00
R. J. McNew	450			
W. J. Webster	1,300			
Thos. Willis	500			
S. P. VanMeter	1,000			

## EVANGELISTIC TOTALS

This year	96	127	3,668	2,470	427
Last year	72	84	3,534	1,841	364
Increase	24	43	134	629	63
Decrease					

128	8	137	16	52	173	35,731
101	1	218	7	28	130	31,303
27	7		9	24	43	4,428
		81				

This year	38,710	\$76.90	\$282.35	\$16.00
Last year	41,503	116.77	124.83	2.48
Increase			157.52	13.52
Decrease	2,793	39.87		

## PRESIDING ELDERS' REPORTS

Names	District	Quarterly meetings held	Quarterly meetings absent	Total meetings for year
A. M. Ewing	S. District, Ind.	94	6	100
J. H. Julian	N. District, Ind.	66	2	68
M. F. Pratt	Ill. & Missouri.	48	1	49
N. Bradshaw	Okla. and Kans.	19	3	22
This year		227	12	239
Last year		220	11	229
Increase		7	1	10
Decrease				

Number on times preached	Other meet ings held	Meetings assisted in	Number of miles traveled	Baptized	Anointed for Healing	Converted or sanctified
202			5150		20	56
133			4194	5	70	52
297	3	3	5684		150	225
135	23	8	4110		10	14
772	31	11	19138	5	250	347
966	13	8	18589	4	130	193
	18	3	549	1	120	154
194						

Marriage ceremonies	Churches dedicated	New classes formed	P. E. Support	Traveling expenses	Received on same
			\$517.63	\$94.45	\$94.45
1			389.31	74.60	74.90
3		5	291.26	79.20	79.20
	3		198.10	62.04	62.04
4	3	5	1396.30	310.29	310.29
4	1	3	1395.64	286.21	277.01
	2	2	.66	24.08	33.28