



*Rev. Albert M. Ewing*  
*State Superintendent*



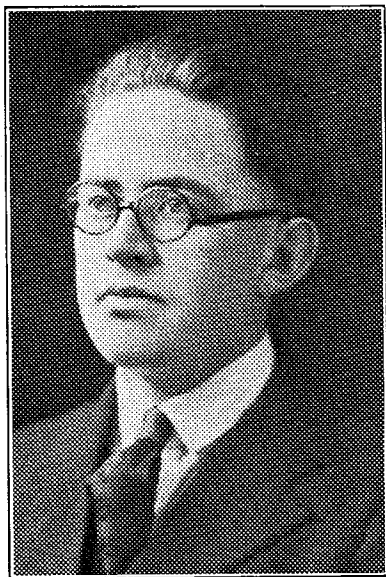
*Rev. Winfred R. Cox*  
*General Superintendent*



*Rev. E. J. Clem*  
*State Secretary*



*Rev. R. W. Chatfield*  
*State Treasurer*



*Rev. D. E. Snow*  
*Home Mission Secretary-Treasurer*

**ADDRESS MADE BY REV. W. R. COX, AUGUST 17, 1925,  
FRANKFORT, INDIANA**

Judging from the very apparent necessities which we have in our District Assemblies, it appears to me that my strength and time would prohibit me from doing the situation justice in making the speech which you evidently desire of me.

Having attended so many District Assemblies and presiding for the last three years, I am necessarily acquainted with not only how we do business, but also, how, according to my judgment, it ought to be done. If there is any work or business which should receive our very best ability and most systematic organization, it is the Lord's cause which we have espoused and profess to belong to. Too frequently we are disposed to grant that almost anything will do to take care of the work of the church while we engage our most earnest efforts in connection with our personal affairs.

I have noticed for over twenty years we have had as matters of consideration at our annual assemblies, some plan to properly finance the Lord's work, trying to get pastors to properly report, prompt and regular attendance at the Assemblies, living up to the requirements of the Assembly after we return home and many other similar subjects. Does it not appear, friends, that we have been long enough about this matter to have some things settled and be showing loyalty to our denominational obligation?

We have a few men who do what they are called upon to do promptly and in good business style. When that occurs, I feel like saying "Amen." But it is too frequently the case that we come to the Assembly unprepared and uninformed concerning the duties which we are sent to discharge. I have heard many delegates undertake to read their reports and so stumble along that it was very evident they had not examined the paper, not informed themselves concerning the business which the report represented. They could not read the writing, they could not pronounce the words and evidently was not acquainted with what the paper meant.

It is often the case we come to the Assemblies and there find out the meaning of the report blanks and time is spent explaining these simple things, which ought to be used in carrying forward the business of the convention. Too few are careful enough in making out their report to be able to submit one which is correct, and time is taken in making the corrections at the Assembly when the local church officials should have done it. Your church should have the credit for all that it has done during the past year. The district should have the credit for all that has been done in it, for the past year, and the District Superintendent cannot make out his annual report with precision unless the pastor and delegate report correctly. His report is no more correct than yours and the biennial report of the General Superintendent is no more correct than that of the District Superintendents.

I have been working on the matter of obtaining accurate statistics concerning our church for about three years and even yet, I have not been able to secure a total summary to which I would be willing to qualify. I would even yet be unwilling to go before a Notary Public and affirm to even the best report I could submit. It is time, brethren, we were getting a conscience along this line of duty. A church should prepare a report which would be to its credit and the delegate should be able to so read it that the church would not have reason to be ashamed of its delegate. It is necessary to have accurate statistics so we will know whether we are backsliding or frontsliding.

# Official Record

## OFFICIAL REPORT

### District Secretary

Rev. E. J. Clem, 1137 S. Waugh St., Kokomo, Ind.

### District Treasurer

Rev. R. W. Chatfield, 15 Tate St., Lawrenceburg, Ind.

### District Council—(Official Members)

Rev. Albert M. Ewing, Frankfort, Ind.

Rev. W. J. Crider, 2004 Hulman St., Terre Haute, Ind.

Rev. E. J. Clem, 1137 S. Waugh St., Kokomo, Ind.

Rev. R. W. Chatfield, 15 Tate St., Lawrenceburg, Ind.

### District Council—(Advisory Members)

Rev. W. A. Frye, 2871 N. Gale St., Indianapolis, Ind.

Rev. Geo. E. Huff, 2501 S. A St., Elwood, Ind.

Rev. Edward Schoeff, 501 S. 8th St., West Terre Haute, Ind.

### District Foreign Mission Board

Rev. Alice Hart, Treasurer, 217 Oak St., Terre Haute, Ind.

Rev. Beryle Weismantle, Frankfort, Ind.

Rev. E. E. Davis, Delphi, Ind.

### Home Mission Secretary-Treasurer

Rev. D. E. Snow, 123 W. 24th St., Anderson, Ind.

### Board of Education

Rev. W. E. Bradley, 607 Olive St., Sullivan, Ind.

Rev. Alice Hart, Terre Haute, Ind.

Rev. Cora A. White, Box 133, Bloomington, Ind.

### Burial Association Board

Rev. W. P. Senn, 2822 5th Ave., Evansville, Ind.

Rev. E. J. Clem, Vice-President, Kokomo, Ind.

Rev. Edward Schoeff, General Treasurer, West Terre Haute, Ind.

Rev. E. W. Wright, General Secretary, 1561 S. 20th St., Terre Haute, Ind.

Rev. Aaron Hayhurst, 1736 S. 9th St., Terre Haute, Ind.

### Ways and Means Committee

Rev. Aaron Hayhurst, 1736 S. 9th St., Terre Haute, Ind.

Rev. Area Montgomery, 814 Grove St., Evansville, Ind.

Rev. P. D. Guyer, Indianapolis, Ind.

Rev. Harry Shepherd, R. R. 9, Greenfield, Ind.

Rev. Geo. E. Huff, Elwood, Ind.

Rev. Angus Jeffers, Evansville, Ind.

### Statistical Committee

Rev. W. P. Senn, 2822 5th Ave., Evansville, Ind.

Rev. Hattie Dunkelburger, 201 Maple St., Three Oaks, Mich.

Rev. Pearl Dean, 1714 S. 10th St., Terre Haute, Ind.

Rev. C. D. Jester, 1506 W. 21st St., Indianapolis, Ind.

Rev. E. V. Halt, 300 S. Third St., Terre Haute, Ind.

#### **Examining Committee**

Rev. W. S. Dean, 1714 W. 10th St., Terre Haute, Ind.  
Rev. Edward Schoeff, W. Terre Haute, Ind.  
Rev. Area Montgomery, 814 Grove St., Evansville, Ind.

#### **Auditing Committee**

Rev. Harry A. Shepherd, R. R. 9, Greenfield, Ind.  
Rev. E. V. Halt, 300 S. Third St., Terre Haute, Ind.  
Rev. J. F. Rogers, 1516 E. 7th St., Muncie, Ind.

#### **Resolution Committee**

Rev. Cora White.  
Rev. Alice Hart, Terre Haute, Ind.  
Rev. Martha Nogle, Andrews, Ind.

#### **Camp Meeting Committee**

Rev. Geo. Huff, Elwood, Ind.  
Rev. R. H. Smith, 815 N. 11th St., Richmond, Ind.  
Rev. Elmer Klopfenstein, West Ash St., Lebanon, Ind.  
Rev. W. A. Frye, Indianapolis, Ind.  
Rev. W. J. Crider, 2004 Hulman St., Terre Haute, Ind.  
Rev. D. E. Snow, Secretary, Anderson, Ind.  
Rev. R. W. Chatfield, 15 Tate St., Lawrenceburg, Ind.  
Rev. A. M. Ewing, Treasurer, Frankfort, Ind.

#### **Reception Committee**

Rev. W. A. Frye, Indianapolis, Ind.  
Glenn Newton, 1162 S. First St., Frankfort, Ind.

#### **Ordination Council**

Rev. A. M. Ewing, Frankfort, Ind.  
Rev. W. S. Dean, 1714 W. 10th St., Terre Haute, Ind.  
Rev. George E. Huff, Elwood, Ind.  
Rev. Edward Schoeff, West Terre Haute, Ind.  
Rev. W. A. Frye, Indianapolis, Ind.

#### **Pilgrims Home Board**

Rev. A. M. Ewing, Superintendent, Frankfort, Ind.  
O. S. Sheets, Secretary-Treasurer, R. R. 1, Frankfort, Ind.  
John A. Payton, Lafayette, Ind.  
George Hershey, Elwood, Ind.  
Rev. Elmer Klopfenstein, Lebanon, Ind.  
Rev. W. A. Frye, Indianapolis, Ind.  
Rev. George Huff, Elwood, Ind.  
Rev. Frank Edwards, 113 North First St., Marion, Ind.

#### **Ministerial Benefit Association Board**

Rev. E. W. Wright, 1561 S. 20th St., Terre Haute, Ind.  
Rev. Pearl Dean, 1714 W. 10th St., Terre Haute, Ind.  
Rev. Edward Schoeff, 501 S. 8th St., West Terre Haute, Ind.

### **JOURNAL OF PROCEEDINGS OF THE INDIANA STATE ASSEMBLY, AUGUST 17-19, 1925**

#### **Monday Morning Session, August 17**

The third annual session of the Indiana district assembly of the Pilgrim Holiness church met at Frankfort, Ind., August 17, 1925, for the purpose of promoting our work for the coming year.

8.30 P. 11:30 A. 2.30 P. 2.30 A.

The Assembly was called to order at 8:30 in the tabernacle on the camp ground by Rev. A. M. Ewing, State Superintendent, in chair. After a song prayer was offered and scripture read by Bro. Ewing, found in 2nd chapter of Titus, after which he spoke of the duty of parents to their children and our duty as examples relative to others.

Moved and seconded that we excuse Bro. Morris from conference on account of work carried.

Moved and supported we grant the churches who have no present delegate that such church has the right to substitute a lay member. Motion carried.

Moved and supported we use platform as conference bar. Carried.

Moved and supported that W. J. Cryder, Harry Adams and including South American returned missionaries, also other pastors who have come from other districts acting as pastors in Indiana, be admitted into the bar. Carried.

Moved and supported that the following names be admitted into conference bar as advisory members: E. F. Stewart, Lawrence Williams, Dora Upp, Emma Irby, C. R. Madison and wife, E. I. Faidley.

Moved and supported that R. W. Smith come to conference. Carried.

Moved and supported that Dora Upp appear before examining board before being accepted in bar.

Moved and supported that we use rules as recorded in manual. (Page 93, Article 223.) Carried.

Moved and seconded that reports be read without comment. Carried.

Moved and supported that pastors read only the large blank before assembly. Carried.

Moved and supported that we adjourn. Motion carried.

#### Afternoon Session, August 17, 1925

After devotional services conducted by Rev. M. F. Pratt, we entered into our regular business. Minutes of last Assembly were read and accepted.

Moved and supported we rescind the former motion in regard to the conference bar. Carried.

Moved and supported we use the first four tiers of seats back to the second post from front. Carried.

Rev. E. V. Halt was appointed to serve on the Ways and Means Committee in Brother Fouts's place.

Rev. C. D. Jester was appointed to substitute on the Statistical Committee in Sister Innman's place.

Brother W. S. Dean was appointed as substitute on the Examining Committee in Bro. Fouts's place.

Rev. W. J. Crider was appointed to fill the vacancy of Sister Titus on the Resolution Committee.

Rev. G. C. Middleton is to serve on the Ordination Council in the place of Bro. Fouts, whose health would not permit him to act on these boards.

Next in order was the reading of reports. Anderson First Church report was read and referred back for correction. First Church at Frankfort was referred for correction. The report from Lawrenceburg was accepted with corrections.

Rev. W. R. Cox, General Superintendent, arrived and was welcomed by a standing of the assembly after which he gave a talk to the assembly relative to the duty of our preachers.

Moved and supported we convene at 7:30 p. m. and adjourn at 9:30 p. m.

Moved and supported that we adjourn. Benediction by Bro. Ewing.

#### Evening Session, August 17, 1925

After devotional services the assembly was called to order by Rev. R. W. Cox in chair.

Moved and supported that we dispense with the roll call. Motion carried.

Next in order was the reading of the minutes of last session and they were accepted.

Moved and supported that all churches which have a membership that en-

titles them to more than one delegate be given the right to place in the bar additional delegate. Carried.

Moved and supported that we fill out blanks as usual in regard to preaching services and move on. Carried.

Moved and supported that we adjourn. Carried. Benediction by Rev. M. F. Pratt.

#### **Tuesday Morning Session, August 18, 1925**

The morning session was opened with devotional services conducted by Rev. W. R. Cox, with singing song entitled, "Marching On," and prayer offered by Rev. G. C. Middleton, after which we entered into business.

First in order was reading of roll and taking names of preachers who were to be licensed or ordained.

Next in order was a motion that we have a ten minutes recess. Carried.

After recess we proceeded to read reports.

Motion in order to adjourn for dinner. Carried. Benediction by Rev. Edwards.

#### **Tuesday Afternoon Session, August 18, 1925**

After devotional service, which was conducted by Rev. A. M. Ewing in chair, we proceeded with the business. Prayer by Rev. R. H. Smith.

Next in order was the singing of a song, "In the Service of the King," and an offering was taken at this time.

Moved and supported that we dispense with the reading of reports. Carried.

Moved and supported that we rescind the motion in regard to the time of the beginning of night session. Motion carried.

Moved and supported that the evening services begin at 7:00 and that this session be given to the General Superintendent, for a speech to the assembly, and the election of officers. Carried.

Next in order was a report that was read from the Resolution Committee.

After the reading of the Resolution Committee we heard the report of the Burial Association and it was accepted.

Sister Hart, the Secretary-Treasurer of Foreign Missions, read her report and it was accepted.

Next in order was report of the Ways and Means Committee by the Chairman, Rev. Area Montgomery.

Moved and supported that we refer the article read by Chairman of Ways and Means Committee in regard to the printing of seven hundred minutes and add to this a clause governing the disposal of same. Motion carried.

Moved and supported that the article, in regard to the pastor's two weeks vacation, that the article be redrafted with an amendment to make arrangements for their pulpit to be filled. Motion lost.

Moved and supported that the Ways and Means Committee bring before this Assembly some plans to solve the problem in regard to the time we shall make out our reports at the year end. Carried.

Moved and supported that we refer the matter of the Presiding Elder's salary to the Ways and Means Committee.

Next in order was report of District Treasurer by Rev. R. W. Chatfield. Accepted.

Moved and supported that we excuse Bro. Deckard from Assembly on account of sickness. Motion carried.

State Superintendent's report was read and accepted.

Moved and supported that we refer the matter that was submitted to us by our State Superintendent to the Ways and Means Committee.

Next was the report of the Secretary-Treasurer of Home Missions, Rev. D. E. Snow.

Moved and supported that we act upon new churches to be accepted. Carried.

They are as follows: English church, with 40 members at English, Ind.; Kempton church, with 17 members at Kempton, Ind.; Frankfort Second church at Frankfort, Ind., with 9 members. North Side church at Indianapolis organized with ten members.



Resolutions Committee brought in more resolutions read by Bro. W. J. Cryder.

Moved and supported that we have in the district a Ministerial Convention the second week in April. Carried.

Moved and supported that the Ministerial Convention be held at the Pilgrim Holiness church at Lafayette, Ind.

Moved and supported that the chairman appoint a committee of three to draft by-laws relating to the Ministerial Benefit Association. Carried. Appointment was made by Rev. A. M. Ewing which is as follows: Pearl Dean, E. W. Wright and Sister Wright.

Moved and supported that we launch at this Assembly a Ministerial Benefit Association composed of conference preachers who desire to affiliate and are members of the Pilgrim Holiness Church, the officers of which shall be elected at this Assembly to serve one year without pay.

Moved and supported that we adjourn. Motion carried. Benediction by Rev. Frank Edwards.

#### **Tuesday Evening Session, August 18, 1925**

After devotional services the Assembly was brought to order with Rev. W. R. Cox in chair. Song service was conducted by Rev. D. E. Snow with song entitled, "Since Jesus Came Into My Heart." Prayer by Rev. A. M. Ewing.

Moved and supported we dispense with the roll call and reading of the minutes. Motion carried.

Next in order was an address given the Assembly by Rev. W. R. Cox, the General Superintendent, which was very powerful and effective in regard to the duty of the ministry. After the address, prayer was offered by Rev. M. F. Pratt and an altar service closed the evening session.

#### **Wednesday Morning Session, August 19, 1925**

The Assembly Wednesday morning was called to order by Rev. A. M. Ewing, State Superintendent in chair, by singing song and prayer by Bro. Frye.

Next in order was revising of roll.

Next in order was reading of minutes of the last session. Carried.

We move that we rescind the former motion in regard to the election of officers. Carried.

Moved and supported that we elect officers at 1:30 Wednesday afternoon. Carried.

Sister Lewis read the report of the Auditing Committee and it was accepted.

While waiting on reports from various committees, a song was sung, entitled, "All Hail the Power of Jesus Name."

Next in order was a recess of ten minutes.

Rev. Montgomery read a partial report of the Ways and Means Committee.

Next in order was a matter concerning the Old Peoples Home.

Moved and supported that we refer to the Ways and Means the business in regard to preparation for the General Assembly.

A request was made that each church give to the camp one set of knives and forks, one set of teaspoons, one sheet, two pillow cases, one dish towel and that we urge all persons to save chicken feathers for pillows.

Next in order was the taking of subscriptions for the Pilgrim Holiness Advocate, at which time there were 530 subscriptions promises in the next three months.

Moved and supported that we refer the name of Rush Moore to the Examining Committee. Motion carried.

Moved and supported that our Indiana district go on record for the support of our editor, Bro. Stone for one month. Carried.

Moved and supported that each preacher send to our State Treasury \$1.00 for the purpose of defraying the expense of our editor's salary for one month.

Moved and supported that the President of our Educational Board be

given the authority by this Assembly to purchase two sets of the study course books and send bill to the State Treasurer. Carried.

Moved and supported that all preachers who borrow books from the State Board of Education get a recommendation from State Superintendent and they pay postage. Motion carried.

Moved and supported that we adjourn. Carried. Benediction by Rev. C. A. Fouts.

#### Afternoon Session, August 19, 1925

The afternoon session opened with Rev. W. R. Cox in chair, and song service conducted by Rev. D. E. Snow. Song entitled, "Are You Washed in the Blood?" was followed with prayer by Rev. B. H. Colen.

Moved and supported that we dispense with the roll call.

Minutes were read and accepted.

Rev. C. C. McNall of the Ohio district was introduced to the Indiana district.

Moved and supported that we suspend the present order of the day and receive the ministers that have been before the Examining Board.

Bro. Montgomery read a partial report from the Examining Committee. (See report following.)

Moved and seconded that we accept this report as a whole. Carried.

Moved and supported that we accept this report for second year license ministers as a whole. Carried.

Moved and seconded that we accept this report for third year license ministers as a whole. Motion carried.

We recommend that the following names be ordained:

Elmer Klopfenstein, Lebanon, Ind.

Ernest Crowder, French Lick, Ind.

Ruby Parr, Coalmont, Ind.

Elmer I. Faidley, 1831 Walker St., Cincinnati.

B. H. Colen, East Enterprise, Ind.

Moved and supported that we accept as a whole, the report as recommended by the Examining Board. Motion carried.

After all the ministers were brought forward that were to be licensed or ordained, Bro. Cox gave them an address concerning the duty of the ministry.

Moved and supported that we suspend the order of the day and proceed with the Ordination Service. Carried.

The preceding ones were ordained by the Council after an address by Rev. W. R. Cox.

The next in order was the election of officers, which was preceded by a few moments of prayer, asking God to direct us through this election.

Tellers were appointed by General Superintendent. They were as follows: B. H. Colen, A. H. Plunket, Fred Myers, E. V. Halt, Will P. Rice and Lawrence Williams.

Moved and supported we adjourn. Carried. Benediction by Rev. W. A. Frye.

Election as follows:

State Superintendent—Rev. Albert M. Ewing, 758 South Columbia St., Frankfort, Ind.

Bro. Dean was elected assistant State Superintendent and he offered his resignation which was accepted and Rev. W. J. Crider was elected in his place.

#### Evening Session, Wednesday, August 19, 1925

After supper the evening session was called to order with Bro. A. M. Ewing in chair. Bro. Lawrence Williams conducted the song service by singing song, "I Have Settled the Question," after which Rev. W. J. Crider lead in prayer.

Moved and supported that we dispense with the roll call. Carried.

Minutes read and accepted.

A report was read by Sister Hart from Bro. and Sister Rassman in India.

Moved and supported that we suspend rules and elect the Foreign Missionary Board by acclamation. Carried.

Moved and supported that we elect the same board for next year. Board as follows: (Foreign Missionary)

Rev. Alice Hart, Treasurer, 317 Oak St., Terre Haute, Ind.

Rev. Beryle Weismantle, Frankfort, Ind.

Rev. E. E. Davis, Delphi, Ind.

Moved and supported that we suspend rules and elect the Home Mission-Secretary-Treasurer by acclamation. Carried.

Election is as follows: Rev. D. E. Snow, Lafayette, Ind.

Moved and supported we elect the Board of Education by suspending rules and elect by acclamation. Motion carried.

Moved and supported that the chair nominate this Board. Carried. This was referred to our State Superintendent for appointment and the following were nominated:

Rev. W. E. Bradley, Sullivan, Ind.

Rev. Alice Hart, Terre Haute, Ind.

Rev. Cora White, Bloomington, Ind.

Moved and supported that this board be cut down from five to three members. Carried.

Moved and supported that we elect the three that were named on board.

Moved and supported that we suspend the rules and elect the Burial Association Board by acclamation.

Moved and supported that the same board of this association be re-elected.

This motion was recalled by Bro. Shrock, who offered the motion.

Moved and supported that we rescind action relative to electing this board by acclamation. Motion lost.

Moved and supported that Chair nominate the ones to serve on this board.

Carried. District Superintendent, A. M. Ewing, nominated as follows:

Rev. W. P. Senn

Rev. Edward Schoeff

Rev. E. W. Wright

Rev. E. J. Clem

Rev. Aaron Hayhurst

Moved and seconded that they all be elected together by acclamation. Motion carried and they were elected.

Next in order was a motion that the appointing of the Ways and Means Committee be left to the chair. Carried. Committee is as follows:

#### Ways and Means Committee

President, Rev. Arca Montgomery.

Rev. P. D. Guyer, Kokomo, Ind.

Rev. Harry A. Shepherd, Orleans, Ind.

Rev. Angus B. Jeffers, Evansville, Ind.

Rev. George E. Huff, Elwood, Ind.

#### Statistical Committee

Committee was appointed by chair. While chair was arranging the appointment we elected the Examining Board.

Moved and supported that we elect the Examining Board by ballot, the highest number of votes being the one to serve three years, the next highest two years and the third highest shall serve one year. The election is as follows:

Brother Montgomery read a partial report of the Ways and Means Committee.

We recommend that each church take a special offering to defray the expense of the General Assembly. This money is to be forwarded to the State Treasurer.

Moved and supported that this resolution be accepted. Carried.

We recommend that each church send in one dollar a month to our State Treasurer for support of Old Peoples Home.

Moved and supported that we accept this recommendation. Carried.

Reading of appointment of Statistical Committee.

W. P. Senn, Hattie Dunkleberger, C. D. Jester, E. V. Halt.

Auditing Committee appointed by chair. Harry Shepherd, E. V. Halt, J. F. Rogers.

Resolution Committee appointed by Bro. Ewing was Alice Hart, Martha Nogle and Cory White.

Moved and supported that Bro. Ewing appoint Camp Meeting Committee Board which is as follows: Rev. George Huff, Rev. R. H. Smith, Rev. Elmer Klopfenstein, Rev. W. J. Crider, Rev. D. E. Snow, Rev. R. W. Chatfield, Rev. A. M. Ewing.

#### **Reception Committee**

Glen Newton, Rev. W. A. Frye.

#### **Ordination Council**

Rev. A. M. Ewing, Rev. W. S. Dean, Rev. George Huff, Rev. Edward Schoeff and Rev. W. A. Frye.

Moved and supported that Bro. Ewing nominate board for Old Peoples Home. Carried

The Examining Board that was elected was as follows:

Rev. W. S. Dean, three years.

Rev. Edward Schoeff, two years.

Rev. Area Montgomery, one year.

Report of Superintendent on Board of Old Peoples Home is as follows:

Moved and supported that we elect these nominated by acclamation. Board as follows:

O. S. Sheets, Frankfort, Ind.

John A. Payton, Lafayette, Ind.

George Hershey, Elwood, Ind.

Elmer Klopfenstein, Lebanon, Ind.

W. A. Frye, Indianapolis, Ind.

Rev. George Huff, Elwood, Ind.

Rev. Frank Edwards, Marion, Ind.

Articles of the Ministerial Benefit Association was read by Bro. Wright, Secretary of the association.

Moved and supported that we accept the rules as read. Carried.

By-Laws are as follows:

#### **By-Laws of the Ministerial Benefit Association**

##### **Article 1.—Name**

The name of this Board shall be the Ministerial Benefit Association of the Pilgrim Holiness Church.

##### **Article 2.—Object**

The object of the Association shall be to provide a fund for the relief of the family of our deceased ministers.

##### **Article 3.—Government**

The Indiana District Assembly shall be the governing body of this Association unless it be adopted by the General Assembly of our churches.

##### **Article 4.—Officers**

The officers of said Association shall be elected annually by the Indiana District Assembly.

The officers of this Association shall consist of an executive board of three or four members to be elected from among its members; who shall serve until their successors are elected.

A Secretary-Treasurer or a Secretary and Treasurer shall be appointed by the chairman of said Board.

It shall be the duty of the Secretary to keep a record of the membership of said association. It shall also be the duty of said Secretary upon the death of a member to levy an assessment of \$1.10 upon each member. All postage, equipment and material expense to be paid from the Association treasury.

It shall be the duty of the treasurer to hold all money of the Association and disburse the same.

#### Article 5.—Membership

The following classifications of our ministry shall be eligible for membership in the Ministerial Benefit Association: Ordained ministers, licensed ministers, ordained deaconesses and licensed deaconesses.

Any one desiring membership in the Ministerial Benefit Association shall make their application upon the blank supplied by the Secretary of said Association.

A membership fee of \$1.10 shall accompany each application, same to be sent to the Secretary who shall issue a certificate of membership.

If for any reason a member of this Association be dropped from our ministry their membership in the Association shall thereupon cease.

#### Article 6.—Assessment

Upon the death of a member of this Association an assessment of \$1.10 shall be made upon each member and said assessment to be paid within thirty (30) days after the receipt of said notice.

If a member of this Association shall fail to pay their assessment within thirty (30) days after the receipt of the notice of same their membership in said Association shall thereupon cease and they shall not be entitled to receive any benefit from the Association.

#### Article 7.—Benefit

The membership certificate shall contain the name of the beneficiary with space for change of beneficiary.

Upon the death of a member of this Association the membership certificate of the deceased member, together with the notice of death, shall be sent to the Secretary of said Association.

Upon the satisfactory evidence of the justice of a claim, the Treasurer of said Association shall issue a check for the payment of such claim.

The amount of benefits paid by this Association shall be equal to one dollar for each member in good standing.

Moved and supported that the Board that is now serving on the Burial Association Board be the same for the Ministerial Benefit Association with a substitution made that E. W. Wright, Pearl Dean and Edward Schoeff make up the Board. Motion carried.

Moved and supported that we adjourn. Motion lost.

Moved and supported that we extend time on account of rain. Carried.

Moved and supported that we grant the Board that was elected to take off the word all off of the article in the By-Laws, Article 5, paragraph 1. Carried.

Requested by Bro. Wright to be given the privilege of purchasing a desk to be used for the Burial Association. Granted.

Moved and supported that the District Council be allowed to take steps toward the launching of a district school. Carried.

Next was a discussion in regard to the purchasing of the field west of the Camp Ground.

Moved and supported that we adjourn. Motion withdrawn.

Moved and supported that we refer this matter concerning the ground west of Camp Ground to the District Council.

Motion was withdrawn and it was moved and supported that we refer this matter to handle according to their best judgment. Carried.

Moved and seconded that the Secretary of the Burial Association be permitted to borrow \$10.00 out of the Burial Association Treasury to defray expenses of Ministerial Benefit Association. Motion carried.

Moved and supported that we adjourn. Carried. Benediction by Rev. Glispy.

#### Thursday Afternoon Session, August 20, 1925

The Assembly was called to order with District Superintendent in chair. The calling of the roll was dispensed with and minutes were read.

Moved and supported that State Superintendent appoint zone presidents to fill vacancies. Motion carried.

Moved and supported that the Camp Meeting Treasurer make a report and place in minutes. Carried.

Moved and seconded that we hear the report of the Statistical Committee. Carried.

The statistical and financial report was read by Bro. Senn and accepted.

The numerical report was read by Rev. Jester and accepted.

Deaconess's report was read and accepted.

Evangelists report was read and accepted.

Moved and supported that we preachers and delegates come to conference next year prepared to stay four days. Motion carried.

Next in order was the reading of the report of the Old Peoples Home by Bro. Sheets, Secretary.

Moved and supported that O. S. Sheets act as Secretary-Treasurer of the Old Peoples Home. Carried.

A. M. Ewing act as General Superintendent of Old Peoples Home. Carried.

Moved and supported that A. M. Ewing, O. S. Sheets, Elmer Klopfenstein act as Executive Committee. Motion carried.

Moved and supported that all reports from pastors be prepared for the Assembly not later than the first Monday. Carried.

Moved and supported that we amend the motion by reading and using the new blanks purchased by general church. Motion carried.

Next in order was the reading of the Stationery Committee. Read by Rev. D. E. Snow.

Moved and seconded that this report be received. Carried.

Moved and seconded that this assembly grant Rev. A. H. Plunket a letter of standing to the church of his choice. Carried.

Moved and supported that this Assembly consider the matter of zone work and that they secure an evangelist to work in their respective churches and zone work. Motion lost.

Rev. Glen Newton was appointed on the Reception Committee made vacant by the resignation of Rev. A. H. Plunkett.

Moved and supported that we adjourn. Benediction by Rev. A. M. Ewing.

### REPORT OF THE RESOLUTION COMMITTEE

Resolution 1—Inasmuch as God has poured out His spirit and given another good Camp Meeting, be it

Resolved, That we show our gratitude for the same by rising and singing the Doxology.

Resolution 2—Inasmuch as God has again favored us with the presence of our General Superintendent, Rev. W. R. Cox, therefore, be it

Resolved, That we express our appreciation of the same by a rising vote

Resolution 3—Inasmuch as our District Superintendent, Rev. A. M. Ewing, and District Officers have so ably and faithfully taken care of our state work, be it

Resolved, That we by a rising vote pledge our co-operation and prayers.

Resolution 4—Whereas the angel of Death has visited us and borne from our midst one of our faithful and self-sacrificing workers, in the death of Julia Pratt, matron of Beulah Rescue Home, who died December 30, 1924; and, whereas the Indiana District feels keenly the loss of dear "Mother" Pratt, who so faithfully dealt with the souls of the erring girls, and so lovingly mothered those who came under her care in the Home, be it

Resolved, That the Assembly stand with bowed heads for one minute in silent tribute to the memory of this departed saint.

Resolution 5—Inasmuch as God has seen fit to call from our midst Rev. Tillie Morris, therefore, be it

Resolved, That we express our sympathy to the bereaved husband by a rising vote.

Resolution 6—Whereas, Mr. John M. Fitzgerald, attorney at law, 715 Terre Haute Trust Building, Terre Haute, Indiana, has for three years tendered his legal service, counsel and services for the Burial Association, and has declined to accept any remuneration for his services, but has declared that

he was willing and glad to be of service to our church in this worthy cause; therefore, be it

Resolved, That this Assembly extend to Mr. Fitzgerald our sincere thanks in appreciation for his kindness and services. Furthermore, be it resolved that a copy of these resolutions, bearing our church seal, be sent to Mr. Fitzgerald by our Indiana District Secretary.

Resolution 7—Whereas, the city papers and especially the Morning Times which has so liberally contributed to the success of our Camp Meeting and Assembly, in that they have given preferred columns on the front pages of their paper at a great sacrifice to themselves, besides paying a handsome salary to one of the very best journalists that can be had to thus serve the Camp; we feel we are greatly indebted to them for what they have contributed to the success of our great Camp Meeting and Assembly of 1925. Therefore, be it

Resolved, That this Assembly show their appreciation by a rising vote of thanks and that our State Superintendent convey to them our thanks.

Resolution 8—Whereas, our beloved brothers, Jacob Shoemaker and John Wharton, and Sister Elizabeth Slinn have by their very liberal donations made it possible for us to supply a greatly felt need in our church, namely, the opening of an Old Peoples Home, be it resolved that we show our appreciation of their offering of love to the Lord and our church by a rising vote of thanks.

## WAYS AND MEANS

1

We recommend that our pastors do not forsake their own appointments to hold evangelistic services in other places with this provision. That said church of which they are pastor is supporting them.

2

We recommend that the workers in the camp meeting and assembly be appointed by the Camp Meeting Committee and no pastor or church have the authority to send persons for such purposes unless duly authorized by the Camp Committee.

3

We recommend that the budget consist of 10 per cent of all money raised by the church and Sunday school except that raised for building purposes.

4

We recommend that the District Secretary be paid \$30.00 for editing the Assembly Minutes.

5

We recommend that churches calling other preachers for trial sermons or other occasions at least pay their car fare.

6

We recommend that each church pay into our State Treasury 10 per cent of all gross offerings; 65 per cent to go for state expense, 60 per cent of remainder for Old Peoples Home, 40 per cent for home missions and that each church pay into our state treasury the equivalent of 25 cents per member for the General Superintendent.

7

We recommend that each church give their pastor a two weeks vacation with pay.

8

Inasmuch that the local churches are holding in question in regard to the expiration of the conference year we recommend that the conference year shall close including the last Sunday of the State Camp. We also recommend that our pastors be paid accordingly.

9

We recommend that this Assembly make some provision to provide for our coming General Assembly.

10

We recommend that the District Secretary have seven hundred copies of the minutes published, to be paid for out of the State Treasury and be distributed free to our churches, according to its membership.

11

We recommend a board of seven members be elected for the Old Peoples Home and that they elect the Superintendent.

12

We recommend that the business year of our churches end at the last quarterly meeting.

13

We recommend that our Burial Association General Secretary be paid \$20 for single death and \$35 for double deaths.

14

We recommend that the District Superintendent be paid \$2500.00 for his labor this year and this amount to include his traveling expenses.

15

We recommend that each church take a special offering to defray the expense of the General Assembly. This money is to be forwarded to the State Treasurer.

16

We recommend that each church send in one dollar a month to our State Treasurer for support of Old Peoples Home.

#### **REPORT OF THE AUDITING COMMITTEE**

We, your auditing committee, have audited the different reports and found them correct. Reports are as follows:

R. W. Chatfield, Treasurer.

E. W. Wright, B. A. Secretary.

Edward Schoeff, B. A. Treasurer.

Alice Hart, Foreign Mission Secretary-Treasurer.

D. E. Snow, Home Mission Secretary-Treasurer.

#### **STATE SUPERINTENDENT'S REPORT, 1925**

In the goodness and providence of God we are spared to meet in another Annual Assembly, only one of our number answered "The Final Call." Another page of life's history has been made. The unalterable law of time has indelibly marked all our doings. I would not want to feel that I ever had a more satisfactory year. Speaking as a whole—the gracious meeting God has given has splendidly compensated us for the little service we have rendered. I have made many visits where my trip was of a business nature. I am happy to say we have had very little trouble. Of course, in any district, the size of the Indiana District, there will come a few unpleasant things, but God has in the most part helped us, "Praise His Name." We have preached three funerals and had two marriages. Several have claimed definite victory and are given in the pastor's report.

We visited several of the Zone Tent Meetings and notwithstanding the stormy season where severe wind and hail and rain and lightning were encountered—yet God so wonderfully protected us that only one tent was damaged, although 46 tent meetings were conducted during the year. We have spent many days on the Camp Ground, not only in managing the remodeling of the Tabernacle, but labored day after day. Also under the providence of God we were able to build the Old Peoples Home, a home



worth at least \$12,000, practically not only taking the management but laboring also, saving the churches several hundred dollars this year. I have done by best where there are no doubts many could have done better.

REV. ALBERT M. EWING,

District Superintendent.

Number Times Preached .....	110
Number Churches Organized .....	4
Churches Dedicated .....	6
Salary .....	\$2200
Traveling Expenses .....	\$300
Number of Marriages .....	2
Number of Funerals .....	3

### TREASURER'S REPORT

Balance on hands beginning of year .....	\$ 361.67
Amount received during year .....	5110.48
Total amount for the year .....	5472.15
Expenditures for the year .....	4942.41
Balance in treasury .....	529.74

### Itemized Statement of Treasurer's Report

Paid out to	
A. M. Ewing, salary for year .....	\$2500.00
Donald Snow, for Home Missions .....	618.85
M. F. Pratt, for Rescue Home .....	222.76
Alice Hart, for Foreign Missions .....	218.27
Ira Shelton, for Orphanage .....	227.28
A. M. Ewing, Old Peoples Home .....	226.26
C. G. Taylor, for Kingswood College .....	19.98
Harold Anderson, for Pasadena College .....	14.12
D. F. Silor, for Greensboro College .....	14.12
Printing Minutes .....	108.50
Editing .....	30.00
J. L. Kennett, for Report Blanks .....	23.13
Printing Letters .....	3.00
General Superintendent's Salary .....	283.18
Delegates expenses to General Conference .....	186.39
R. W. Chatfield, for services rendered in 1924 and 1925 .....	200.00
Incidentals .....	46.57
Total Expenditures .....	\$4942.41

R. W. CHATFIELD, Treasurer.

## ANNUAL REPORT OF BURIAL ASSOCIATION

### Receipts

Amount brought forward from last year .....	\$ 4047.42
Amount received during year .....	11215.29
Total receipts .....	\$15262.71

### Expenditures

Thirty-one (31) deaths at \$300.00 each .....	\$ 9300.00
Total expenses for year .....	1146.73
Total expenditures .....	\$10446.73
Total receipts for year .....	\$15262.71
Total expenditures for year .....	10446.73
Balance in treasury .....	\$4815.98

### Membership

Members reported last year .....	1912
Members received during year .....	276
Total .....	2188
Members dropped for all causes during year .....	391
Total membership now enrolled .....	1797

EDWARD SCHOEFF, Treasurer.  
EMRA W. WRIGHT, General Secretary.

## Unstationed Preachers' Report

NAMES	Services Held	Times Preached	Calls Made	Prayer Meetings	Prayed with for Healing	Regeneration	Sanctification	Marriages	Funerals	Subscriptions for Church Paper	Books Read	Pages	Amount Paid Bethel Orphanage	Amount Paid to State Work
Ida Franklin -----	11	10	58								2	500	\$6.00	\$1.30
Elsie A. Bradley -----	6	3	120		15						4	1000		1.30
Estella Henderson -----		10	100		20	1								
Chas. M. Slusser -----		96	165	52	41				6		4	1714		1.00
Lucinda Rhodes -----		4	50	40	6	10					2	210		
Charles Kendall -----		22	20		14	2		2						
J. F. Morris -----			554		44			1	1	3				
C. J. Wilson -----		30	10	40	5	5		2			6	1300		
Chas. Rutherford -----	15	10	36											
Frank Wheeler -----		10	6	6	12	1			1	1	2	1898		
John Payton -----	50	20	30		10	6		3			15	3500		
W. F. Hinds -----		9							1	1				
Owen DeBaum -----		20				14		3						
Charles Eddy -----		20	5	5	2	10		2		1				
Samuel Moore -----		5		3	9			1			2	221		
	82	269	1154	146	127	90	16	4	15	1	37	10343	\$6.00	\$3.60

### HOME MISSION SECRETARY-TREASURER'S REPORT

Amount brought forward .....	\$ 264.31
Amount received .....	753.93
Total amount .....	\$1018.24
Amount paid out .....	385.77
Balance on hand .....	\$632.47

D. E. SNOW, Home Mission Secretary-Treasurer.

### FOREIGN MISSION TREASURER'S REPORT

Brought Forward .....	\$ 412.73
Received during year .....	6092.14
Total .....	\$6504.87
Paid out during year .....	5754.40
Balance on hand .....	\$750.47

ALICE M. HART, Secretary-Treasurer.

### CAMP MEETING REPORT FOR AUGUST, 1925

Total receipts from Aug. 16, 1924, to Aug. 5, 1925 .....	\$3975.28
Total expenditures, Aug. 16, 1924, to Aug. 5, 1925 .....	3173.42
Total balance Aug. 5, 1925 .....	801.86
The cash balance Aug. 5, 1925 .....	\$294.86
Money loaned out .....	507.00
Total balance .....	\$801.86
Total receipts for the 1925 Camp, including cash balance of \$294.86, was .....	\$5266.25
Paid out for expense of Camp .....	2815.05
Balance on August 28, 1925, is .....	\$2451.20

This amount includes the subscriptions paid in for the new Dormitory.

A. M. EWING, Treasurer.

### STATIONING COMMITTEE REPORT

Anderson (First), Donald E. now, 123 W 24th St., Anderson, Ind.  
Anderson (Second), David Stewart.  
Aurora, Milbern Raund, Laurenceburg, Ind.  
Andrews, To be supplied.  
Bicknell, J. H. Cruser, Bicknell, Ind.  
Bass Lake, Fred Thornburg, Walkerton, Ind.  
Brown's Chapel, Harry A. Shepherd, Greenfield, Ind., R. R. 9.  
Brownstown, J. T. Linton, Grantsburg, Ind.  
Cory, Crawford Hass, Seeleyville, Ind.  
Connersville, James Hoover, Richmond, Ind.  
Coalmont, Myrtle Coleman, Coalmont, Ind.  
College Corner, A. B. Grubb, College Corner, Ohio.  
Concord, Frank Wheeler, Lawrenceburg, Ind.  
Cambria, W. G. Bogue, 755 So. Jackson St., Frankfort, Ind.  
Dupont, W. C. McHenry, Dupont, Ind., R. R. 1.  
Delphi, E. E. Davis, Delphi, Ind.  
Evansville (First), W. P. Senn, 2822 5th Ave., Evansville, Ind.  
East Columbus, B. H. Colen, East Columbus, Ind.  
East Enterprise, Adam Schwing, Rising Sun, Ind.  
Elwood, George Huff, 2501 So. A St., Elwood, Ind.  
Evansville (Second), Angus Jeffreys, care 814 Grove St., Evansville, Ind.  
Edinburg, Nora Allen, Edinburg, Ind.  
English, Wilbur Moore, English, Ind.  
French Lick, E. Crowder, 131 Washington St., French Lick, Ind.  
Frankfort (First), Glen Newton, 1162 So. First St., Frankfort, Ind.  
Frankfort (Second), W. G. Bogue, 755 So. Jackson St.  
Frankton, Frank Eakins, Elwood, Ind., R. R.  
Forest Howard Goins, Kokomo, Ind., Gen. Del.  
Ferguson, Chapel, J. H. Carroll, Plainville, Ind., R. R. 1.  
Gray's Ridge, Rudolph Callison, Oaktown, Ind.  
Greenwood, Oscar Deckard, Greenwood, Ind.  
Greensburg, W. E. Ketchem, 379 Sheridan St.

Huntington, C. A. Foust, 1364 Superion St.  
 Hope, To be supplied.  
 Hartsville, S. L. Baker, Hartsville, Ind.  
 Indianapolis (First), W. A. Frye, 2871 No. Gale St., Indianapolis.  
 Indianapolis (Second), J. H. Sibrel, 2305 Lungley Ave., Indianapolis, Ind.  
 Indianapolis (Third), P. D. Guyer, 2042 Sugar Grove St., Indianapolis, Ind.  
 Indianapolis (Fourth), Wilbur McGinnis.  
 Jasonville, Augusta Lewis, Jasonville, Ind.  
 Jackson Hollow, E. W. Wright, 1561 So. 20th St., Terre Haute, Ind.  
 Kokomo, E. J. Clem, 1137 So. Waugh St., Kokomo, Ind.  
 Lafayette, C. C. McNall, 1822 Purdue St., Lafayette, Ind.  
 Leisure, Albert Holcomb, Elwood, Ind., R. R.  
 Linton, Mary Friend, 379 N. E. E St., Linton, Ind.  
 Logansport, Clarence Snow, 1317 Liberty St., Logansport, Ind.  
 Lawrenceburg, R. W. Chatfield, 15 Tate St., Lawrenceburg, Ind.  
 Lebanon, Elmer Klopfenstein, 504 W. Ash St., Lebanon, Ind.  
 Marion Tabernacle, Frank Edwards, 113 No. F St., Marion, Ind.  
 Madison, D. D. Fortner, Madison, Ind.  
 Michigantown, Frank Cox, Michigantown, Ind.  
 Medora, Luther Majors, Oolitic, Ind.  
 Mitchell, Thomas Steinings, Mitchell Ind.  
 Muncie (First), J. Frank Rodgers, 1516 E. T. Whitely, Muncie, Ind.  
 Muncie Tabernacle, Wilbur McCrory, R. R. 10, Box 217, Muncie, Ind.  
 Middletown, Pearl Dean, 1714 So. 10th St., Terre Haute, Ind.  
 Marble Corner, W C McHenry Dupont, Ind., R. R. 1.  
 Merom, To be supplied.  
 New London, Howard Goins, Kokomo, Ind., Gen. Del.  
 North Vernon, Arthur McQueen, Greensburg, Ind.  
 New Carlisle, F. I. Faidley, New Carlisle, Ind.  
 Noblesville, Elwood Dodge, Noblesville, Ind.  
 North Landing, John Doll, 1810 Young St., Cincinnati, Ohio.  
 Newcastle, E. P. Schrock, 1327 N. Avenue, Newcastle, Ind.  
 Orleans, To be supplied.  
 Richmond, Ray Smith, 815 N. 11th St., Richmond, Ind.  
 Rising Sun, Adam Schwing, Rising Sun, Ind.  
 Terre Haute, Hulman St., W. J. Crider, 2004 Hulman St., Terre Haute, Ind.  
 Terre Haute, Main St., E. V. Halt, 300 3rd St., Terre Haute, Ind.  
 Terre Haute, Greenwood St., Jesse Hayhurst, 2518 Jefferson St., Terre Haute, Ind.  
 Terre Haute, West, Edward Schoeff, 501 So. 8th St., West Terre Haute.  
 Tipton, Floyd Goins.  
 Tyner, E. V. Wade, Tyner, Ind.  
 Thorntown, Dorsey Schenck, Thorntown, Ind.  
 Sullivan, W. E. Bradley, 607 N. Olive St., Sullivan, Ind.  
 Seymour, W. P. Rice, 418 E. Second St., Seymour, Ind.  
 Sanford, Albert E. Lowe, Terre Haute, Ind.  
 Shoals, Ida Stewart, Shoals, Ind.  
 Scott City, Pearl Dean, 1714 So. 10th St., Terre Haute, Ind.  
 Versailles, To be supplied.  
 Wabash, W. B. Fugett, Wabash, Ind.  
 Westport, Arthur McQueen, Greensburg, Ind.  
 Walkerton, E. V. Wade, Tyner, Ind.  
 Weisbaugh, To be supplied by Ida Stewart.  
 Woodlawn, To be supplied.  
 Winchester, Fred Myers, 606 Short St., Winchester, Ind.  
 Kempton, Clyde McCombs, No. 13th St., Elwood, Ind.

#### ORDAINED MINISTERS

Akers, Joe, Reelsville, Ind.	Bradley, W. E., 627 N. Olive St.,
Auxier, Miriam, Carlinsville, Ill.	Sullivan, Ind.
Allen, Nora, Alexander, Ind.	Bradley, Elsie, 627 N. Olive St.,
Adams, W. S. Seelyville, Ind.	Sullivan, Ind.
Bevers, H. C., East Columbus, Ind.	Baughman, Retta, 1341 W. 13th St.,
Beitzel, Chas., Africa.	Muncie, Ind.

Beitzel, Mary E., Africa.  
 Barnes, O. W., Kingswood, Ky.  
 Bennett, Robert.  
 Bowman, Lula, Thorntown, Ind.  
 Bogue, W. G., 755 S. Jackson St.,  
 Frankfort, Ind.  
 Cruser, J. H., 301 Murlin St., Bick-  
 nell, Ind.  
 Crider, W. J., 2004 Hulman St., Ter-  
 re Haute, Ind.  
 Crowder, Ernest, 131 Washington  
 St., French Lick, Ind.  
 Colen, B. H., East Enterprise, Ind.  
 Clem, E. J., 1147 S. Waugh St., Ko-  
 komo, Ind.  
 Chatfield, R. W., 15 Tate St., Law-  
 renceburg, Ind.  
 Carroll, John, Plainville, Ind., R. 2.  
 Chamberlin, G. W., 1732 S. Market  
 St., Kokomo, Ind.  
 Davis, E. E., Delphi, Ind.  
 Davis, Gertrude, Delphi, Ind.  
 Davis, G. A., Barryton, Mich., Box  
 73.  
 Dunkleburger, Hattie, 201 Maple St.,  
 Three Oaks, Mich.  
 Donovan, Jack, 633 W. Main St.,  
 Thorntown, Ind.  
 Dye, J. C., Cass, Ind.  
 Dean, W. S., 1714 S. 10th St., Terre  
 Haute, Ind.  
 Dean, Pearl, 1714 S. 10th St., Terre  
 Haute, Ind.  
 Douglas, James, West Terre Haute,  
 Ind.  
 Eacret, J. O., 1432 Cruft St., Indi-  
 anapolis, Ind.  
 Ewing, A. M., 758 S. Columbia St.,  
 Frankfort, Ind.  
 Edwards, Frank, 113 N. F St.,  
 Marion, Ind.  
 Friend, Mary, 370 N. 1. 6th St., Lin-  
 ton, Ind.  
 Faidley, Elmer I., New Carlisle, Ind.  
 Fortner, D. D. 908 W. 2nd St., Mad-  
 ison, Ind.  
 French, Marion, South Bend, Ind.  
 Franklin, Ida, 2417 S. 1st St., She-  
 boygan, Wis.  
 Frye, W. A., 2871 No. Gale St., In-  
 dianapolis, Ind.  
 Fouts, C. A., 1364 Superior St.,  
 Huntington, Ind.  
 Fouts, Lilly, 1364 Superior St., Hunt-  
 ington, Ind.  
 Fugett, W. B., Wabash, Ind.  
 Force, L. C., Amboy, Ind.  
 Goins, Howard, Kokomo, Gen. Del.  
 Goins, Lee, Elwood, Ind., R. 5.  
 Groshart, G. W., Loogootee, Ind.,  
 R. 4.  
 Guyer, P. D., 2042 Sugar Grove St.,  
 Indianapolis, Ind.  
 Glispy, Joseph, 2247 N. Gale St., In-  
 dianapolis, Ind.  
 Glispy, Kate, 2247 N. Gale St., Indi-  
 anapolis, Ind.  
 Harrington, Lyda, 1595 N. Hill Ave.,  
 Pasadena, Calif.  
 Huff, Geo., 2501 S. A St., Elwood,  
 Ind.  
 Halt, E. V., 300 S. 3rd St., Terre  
 Haute, Ind.  
 Hayhurst, Jessie, 2518 Jefferson St.,  
 Terre Haute, Ind.  
 Hayhurst, Aaron, 1736 S. 9th St.,  
 Terre Haute, Ind.  
 Haines, Welhelmina, Dayton, Ohio.  
 Hinds, W. F., Swayzee, Ind., R. R.  
 Hart, Alice, 317 Oak St., Terre  
 Haute, Ind.  
 Innman, Katherine, 2532 Wabash  
 Ave., Terre Haute, Ind.  
 Jester, Clarence, 1506 W. 21st St.,  
 Indianapolis, Ind.  
 Jackson, H. B., Chatsworth, Ontario,  
 Canada, R. 1.  
 Jewell, W. S., 602 N. State St., Sul-  
 livan, Ind.  
 Johnson, Fred, 15 Keller St., Evans-  
 ville, Ind.  
 Ketchum, W. E., 379 Sheridan St.,  
 Greensburg, Ind.  
 Kendall, Charles, Wabash, Ind.  
 Klopfenstein, Elmer, 501 Washing-  
 ton St., Lebanon, Ind.  
 Lewis, Augusta, Jasonville, Ind.  
 McQueen, Arthur, 715 W. Main St.,  
 Greensburg, Ind.  
 Morris, J. F., Marion, Ind.  
 Middleton, G. C., 756 S. 1st St.,  
 Frankfort, Ind.  
 Montgomery, Area, 814 Grove St.,  
 Evansville, Ind.  
 McCrory, Wilbert, R. 10, Box 217,  
 Muncie, Ind.  
 Moore, Rush, Oaktown, Ind.  
 Moore, Sam, Wabash, Ind.  
 Newton, Glenn, 1162 S. 1st St.,  
 Frankfort, Ind.  
 Pound, Jean, Korea.  
 Parr, Ruby, Coalmont, Ind.  
 Pratt, M. F., R. R. F, Box 86, Terre  
 Haute, Ind.  
 Pursley, James, 2616 Central Ave.,  
 Anderson, Ind.  
 Rogers, Frank, 1516 E. Butler St.,  
 Muncie, Ind.  
 Rassman, A. E., Bosti, India.  
 Rassman, Distina, Bosti, India.  
 Runnela, Perry, New Carlisle, Ind.  
 Rice, Will P., 418 E. 2nd St., Sey-  
 mour, Ind.  
 Rhoades, E. C., N. Maple St., Tip-  
 ton, Ind.  
 Rhoades, Lucinda, N. Maple St.,  
 Tipton, Ind.  
 Reese, O. W., West Indies.  
 Reese, Ida, West Indies.  
 Stern, Edith, India.

Senn, W. P., 2822 5th Ave., Evansville, Ind.  
 Sibera, J. H., 305 Langly St., Indianapolis, Ind.  
 Smith, R. H., 815 N. 11th St., Richmond, Ind.  
 Schoeff, Edw., 501 S. 8th St., Terre Haute, Ind.  
 Snow, D. E., 123 W. 24th St., Anderson, Ind.  
 Stewart, Ida, Dupont, Ind., R. 1.  
 Snider, I. J., 404 S. Belle St., Sullivan, Ind.  
 Shepherd, Harry, R. R. 9, Greenfield, Ind.  
 Schooly, E. A., 2910, N. Talbert Ave., Indianapolis, Ind.  
 Spears, Charles, New Carlisle, Ind.  
 Shrock, E. P., 1327 N. Ave., New Castle, Ind.  
 Slusser Charles 2036 N. 10th St., Terre Haute, Ind.  
 Thomas, Belle, R. 5, Madison, Ind.  
 Theobolt, Theodore, Shelbyville, Ind.  
 Thornton, J. L., Ogleville, Ind., R. 1.  
 Wheeler, Frank, Lawrenceburg, Ind.  
 White, Cora, Box 133, Bloomington, Ind.  
 Williams, John, R. 9, Greenfield, Ind.  
 Weismantle, Byrle, Frankfort, Ind.  
 Wade, E. V., Tyner, Ind.  
 Wright, E. W., 1561 S. 20th St., Terre Haute, Ind.  
 Wharton, Deborah, 1058 S. 5th St., Frankfort, Ind.

### LICENSED MINISTERS

Eddy, Chas., Indianapolis, Ind.  
 Ellis, Roy, Delphi, Ind.  
 Harvey, O. S., R. R. B, West Terre Haute, Ind.  
 Jewell, Garnett, Columbus, Ind.  
 Myers, Fred, 606 Short St., Winchester, Ind.  
 Moore, W. A., English, Ind.  
 McNeal, Aaron, 2462 Bond St., Indianapolis, Ind.  
 Williams, Lawrence, Ashland, Ky.

### LICENSED MINISTERS

#### Recommended for Advancement not appearing before Board

Baker, L. S., Hartsville, Ind.  
 Baker, Iva, S. Jay St., Kokomo, Ind.  
 Carter, Hascue, 1309 13th St., Lafayette, Ind.  
 Cox, Frank, Michigantown, Ind.  
 Graham, John, Kokomo, Ind.  
 Harris, Arthur, Indianapolis, Ind.  
 Hass, Crawford, Seelyville, Ind.  
 Lounsbury, Viola, Terre Haute, Ind.  
 Scott, Ada, R. R., Elwood, Ind.  
 Shaw, Maude, 1189 W. Adams St., Los Angeles, Calif.  
 Spears, Virginia, New Carlisle, Ind.  
 Schwing, Adam, Rising Sun, Ind.  
 Steward, David F., Anderson, Ind.  
 Schenck, Dorsey, Thorntown, Ind.  
 Trotzke, Edith, R. R. B., Terre Haute, Ind.  
 Wilson, Chas., R. R. 1, Plainville, Ind.

#### Licensed Ministers—Third Year

Briles, Nineveh Rush.  
 Briles, Eula.  
 Coleman, Myrtle, Coalmont, Ind.  
 Holcomb, Albert, R. R. Elwood, Ind.  
 Snow, Clarence, Logansport, Ind.

#### Licensed Ministers—Second Year

Deckard, Oscar, Greenwood, Ind.  
 DeBaun, Owen, Bicknell, Ind.  
 Eakins, Frank, R. 4, Elwodo, Ind.  
 Goins, Floyd, 356 N. E St., Tipton, Ind.  
 Hoover, James, Spring Grove R. R., Box 9, Richmond, Ind.  
 Henderson, Estella, Sheboygan, Wis.  
 Jeffers, Angus, Evansville, Ind.  
 Payton, John, Lafayette, Ind.  
 Porter, Francis, R. 4, Loogootee, Ind.  
 Schoeff, Bertha, 501 S. 8th St., Terre Haute, Ind.

#### Licensed Ministers—First Year

Burress, Ray, R. 4, Loogootee, Ind.  
 Clymer, Pearl, Elwood, Ind.  
 Collins, Myrtle, Oden, Ind.  
 Dodge, Elwood, Noblesville, Ind.  
 Hall, Stephen M., Shelburn, Ind.  
 Holt, Ellis, Shoals, Ind.  
 Holt, E. V., Shoals, Ind.  
 Hibbard, Thos., Indianapolis, Ind.  
 McCombs, Clyde, Elwood, Ind.  
 McHenry, Charles, R. 1., Dupont, Ind.  
 McGinnis, Wilbur, 1746 E. 46th St.,

Indianapolis, Ind.  
 Shipley, Lula, 1315 W. 9th St., Muncie, Ind.  
 Simmons, Mable L., R. 9, Box 11A, Kokomo, Ind.  
 Stennings, Thos., Mitchell, Ind.  
 Thornburg, Geo., Walkerton, Ind.  
 Williams, William F., Kokomo, Ind.  
 Williams, Amah, Kokomo, Ind.  
 Walters, Paul, 1339 Jefferson St., Marion, Ind.  
 Whiteaker, Ulus, 2414 Butler St., Lafayette, Ind.

#### ORDAINED DEACONESSES

Allen, Cora, India.  
 Hibler, Emma, 2703 Boots St., Marion, Ind.  
 Nogle, Martha, Andrews, Ind.  
 Titus, Miss Clyde, 205 Citizens Bank Bldg., Evansville, Ind.

#### LICENSED DEACONESES

Brady, Alice, 2311 Fulton Ave., Evansville, Ind.  
 Moser, Alma, R. 1, Berne, Ind.  
 Moser, Rachel, R. 1, Berne, Ind.  
 Moser, Bertha, R. 1, Berne, Ind.

## CHURCH

## NAME

## Pastor Support

## Cash

## Donation

## Church Budget

## Gen. Supt. Support

## Evangelist Support

## Old Peoples Homes

## Paid on Indebtedness

## Paid on Improvement

## On hand for New Churches

## Church Extension Work

## Paid on Home Missions

## Paid on Foreign Missions

## Paid on Bible School

## Paid on Rescue Homes

## Paid on Orphanages

Greenwood	Oscar Deckard	\$342.70	\$331.35	\$11.35	\$31.10	\$3.25	\$140.00	\$2.00	\$10.00	\$75.00	\$22.00	\$4.00	\$1.00	\$18.77	\$20.00	\$7.00	\$106.00
Calmont	Ruby Parr	64.86	58.86	6.00	25.89	7.00	49.25	3.25	1,700.00	104.50	202.00	5.00	3.00	10.02	50.00	22.50	15.00
Lafayette	D. E. Snow	1,740.00	1,300.00	440.00	66.33	107.70	126.78	5.25	165.00	125.00	2.10	300.00	1,700.00	207.17	20.00	7.00	15.00
Anderson, 2nd Church	C. E. Snow	412.39	346.06	66.33	107.70	102.00	126.78	5.25	165.00	125.00	2.10	300.00	1,700.00	207.17	20.00	7.00	15.00
Lebanon	E. Klopfenstein	871.95	780.00	91.95	107.70	102.00	126.78	5.25	165.00	125.00	2.10	300.00	1,700.00	207.17	20.00	7.00	15.00
East Enterprise	B. H. Colen	295.91	257.71	38.20	27.93	12.55	393.35	2.60	250.00	393.35	2.60	4.00	81.30	20.25	33.73	8.00	107.51
Leisure	Thomas Stineing	394.17	331.67	62.50	25.00	17.50	208.50	1.00	100.00	208.50	1.00	3.00	148.46	4.00	25.00	14.48	2.77
Muncie	J. F. Rogers	1,036.45	961.45	75.00	118.12	5.00	73.02	5.60	130.00	91.71	72.00	50.00	3.00	4.00	25.00	14.48	2.77
Memph	E. W. Wright	16.97	8.82	8.15	75.12	4.34	129.24	1.50	23.00	91.71	72.00	50.00	3.00	4.00	25.00	14.48	2.77
Michigan	V. E. Wade	734.12	538.82	3.62	7.48	35.00	185.00	2.00	23.00	24.00	24.00	24.00	3.00	4.00	25.00	14.48	2.77
Madison	E. J. Clem	1,944.63	1,300.00	296.45	171.70	20.00	143.43	23.50	786.84	28.98	28.98	28.98	3.00	4.00	25.00	14.48	2.77
Anderson	F. N. Edwards	1,340.00	1,300.00	40.00	199.18	1.50	310.00	10.00	130.00	28.00	28.00	28.00	3.00	4.00	25.00	14.48	2.77
Marion Tabernacle	Geo. E. Huff	1,576.00	1,560.00	16.00	55.35	1.50	230.00	10.00	130.00	28.00	28.00	28.00	3.00	4.00	25.00	14.48	2.77
Elwood	Clairdon Haas	260.00	260.00	16.10	68.82	5.00	37.00	2.00	88.87	22.83	57.87	36.57	1.00	3.00	16.50	10.00	38.80
Cory	Auguste Lewis	146.35	142.48	92.00	68.82	2.50	75.00	4.35	88.87	22.83	57.87	36.57	1.00	3.00	16.50	10.00	38.80
Jasonville	Mary Friend	569.47	425.39	122.67	83.50	15.00	243.13	6.00	217.26	202.00	47.00	3.27	160.69	40.25	145.50	33.20	45.48
Union	A. B. Grubbe	569.47	425.39	122.67	83.50	15.00	243.13	6.00	217.26	202.00	47.00	3.27	160.69	40.25	145.50	33.20	45.48
College Corner	E. P. Schrock	559.54	425.39	122.67	83.50	15.00	243.13	6.00	217.26	202.00	47.00	3.27	160.69	40.25	145.50	33.20	45.48
New Castle	Pearl Dean	781.82	750.00	131.82	84.54	16.00	88.64	2.40	10.50	9.91	9.91	15.00	54.53	11.00	20.00	31.30	10.00
Middletown	W. T. McCrory	1,069.26	1,248.00	152.74	108.13	4.25	161.35	2.50	1,000.00	238.63	33.15	85.00	2.16	202.64	73.77	5.00	31.30
Muncie, 2nd Church	R. W. Chatfield	1,400.79	1,248.00	152.74	108.13	4.25	161.35	2.50	1,000.00	238.63	33.15	85.00	2.16	202.64	73.77	5.00	31.30
Lawrenceburg	H. A. Shepherd	428.59	384.00	44.59	13.26	7.00	164.96	3.75	80.00	3.25	8.75	15.00	3.04	62.86	30.00	8.00	35.00
Orleans	I. J. Snider	360.76	338.00	22.76	50.45	7.00	164.96	3.75	80.00	3.25	8.75	15.00	3.04	62.86	30.00	8.00	35.00
Terre Haute, Greenwood St.	Jesse Hayhurst	667.45	617.00	50.45	10.00	44.50	164.96	3.75	80.00	3.25	8.75	15.00	3.04	62.86	30.00	8.00	35.00
Hulman St., Terre Haute	W. J. Crider	639.70	629.70	9.00	44.50	7.00	164.96	3.75	80.00	3.25	8.75	15.00	3.04	62.86	30.00	8.00	35.00
Richmond	R. H. Smith	353.40	353.40	24.11	27.60	15.00	10.00	5.00	60.00	30.00	30.00	27.50	1.56	123.24	4.06	99.05	11.09
Stamford	Adam Schwinn	91.07	85.72	5.35	76.53	12.00	128.42	5.00	112.00	27.50	1.56	123.24	4.06	99.05	11.09	11.09	11.09
St. Zion	Katherine Innan	253.08	176.50	76.53	24.11	15.00	10.00	5.00	60.00	30.00	30.00	27.50	1.56	123.24	4.06	99.05	11.09
East Columbus	G. W. Grosbart	771.92	771.92	6.50	44.67	10.00	166.00	91.95	26.83	47.94	5.80	3.80	2.50	2,000.00	45.00	30.00	35.00
Sullivan	John Kennedy	471.26	464.76	6.50	44.67	10.00	166.00	91.95	26.83	47.94	5.80	3.80	2.50	2,000.00	45.00	30.00	35.00
Aurora	John E. Bradley	68.84	48.00	20.00	38.36	9.66	91.95	26.83	47.94	5.80	3.80	2.50	2,000.00	45.00	30.00	35.00	7.26
North Vernon	Arthur Plunkett	506.00	486.00	20.00	38.36	9.66	91.95	26.83	47.94	5.80	3.80	2.50	2,000.00	45.00	30.00	35.00	7.26
Medora	L. E. Major	49.17	49.17	25.04	3.44	9.00	108.62	5.80	3.80	2.50	2,000.00	45.00	30.00	35.00	7.26	3.68	22.00
New Carlisle	Chas. R. Spear	426.91	401.91	25.04	3.44	9.00	108.62	5.80	3.80	2.50	2,000.00	45.00	30.00	35.00	7.26	3.68	22.00
Seymour	W. P. Rice	321.20	321.20	31.95	15.89	8.50	63.72	3.60	112.00	27.50	1.56	123.24	4.06	99.05	11.09	11.09	11.09
Delphi	Etta Harvey	539.11	488.11	51.06	108.28	8.50	174.00	3.80	25.00	2,000.00	45.00	30.00	35.00	7.26	3.68	22.00	11.09
Jackson Hollow	Howard Beecher	539.11	488.11	51.06	108.28	8.50	174.00	3.80	25.00	2,000.00	45.00	30.00	35.00	7.26	3.68	22.00	11.09
Terre Haute, Main St.	E. V. Halt	554.00	520.00	34.06	205.00	6.75	91.25	3.00	229.00	15.00	43.30	115.00	6.00	20.00	10.00	18.00	2.00
Evansville, 2nd Church	Augus Jeffers	906.08	875.56	30.52	218.34	3.15	91.25	3.00	229.00	15.00	43.30	115.00	6.00	20.00	10.00	18.00	2.00
New London	W. G. Bogue	420.25	416.00	4.25	47.11	3.15	91.25	3.00	229.00	15.00	43.30	115.00	6.00	20.00	10.00	18.00	2.00
Marble Corner	Chas. W. McHenry	780.00	772.00	8.00	53.12	7.00	91.25	3.00	229.00	15.00	43.30	115.00	6.00	20.00	10.00	18.00	2.00
Brown Chapel	J. H. Cruser	647.74	624.74	23.00	63.88	2.50	93.28	2.60	39.00	15.00	43.30	115.00	6.00	20.00	10.00	18.00	2.00
Richmond	Floyd J. Gons	453.90	403.90	180.55	52.98	2.25	33.92	2.60	39.00	15.00	43.30	115.00	6.00	20.00	10.00	18.00	2.00
Tippecanoe	Frank Cox	131.50	128.00	3.50	5.80	2.25	33.92	2.60	39.00	15.00	43.30	115.00	6.00	20.00	10.00	18.00	2.00
Frankfort, 2nd Church	Supplied	78.45	26.00	10.00	56.18	5.00	24.22	13.00	50.88	7.50	10.00	19.00	22.07	651.46	17.50	10.00	10.00
Grays Ridge	Sarah Plunkett	1,196.00	1,196.00	14.73	14.16	3.00	392.25	2.10	1.20	218.00	1.76	8.24	80.26	2.70	39.52	30.00	19.00
Indianapolis, 1st and 3rd Ch., Indianapolis	J. H. Sibrel	1,196.00	1,196.00	14.73	14.16	3.00	392.25	2.10	1.20	218.00	1.76	8.24	80.26	2.70	39.52	30.00	19.00
Hartsville	B. H. Colen	139.74	116.69	24.05	12.29	3.00	162.44	2.00	63.00	30.00	25.00	200.00	1.10	475.24	49.56	25.00	32.00
North Landing	Fred Myers	325.00	280.00	65.00	12.29	3.00	162.44	2.00	63.00	30.00	25.00	200.00	1.10	475.24	49.56	25.00	32.00
West Terre Haute	Ed Schoel	1,068.50	929.20	85.51	44.94	1.50	203.94	2.00	63.00	30.00	25.00	200.00	1.10	475.24	49.56	25.00	32.00
Wabash	W. A. Fugett	954.20	829.20	162.44	18.30	1.50	203.94	2.00	63.00	30.00	25.00	200.00	1.10	475.24	49.56	25.00	32.00
Huntington	C. A. Fouts	647.38	484.94	162.44	18.30	1.50	203.94	2.00	63.00	30.00	25.00	200.00	1.10	475.24	49.56	25.00	32.00
Shoals	J. B. Douglass	183.00	204.00	50.00	6.75	1.50	203.94	2.00	63.00	30.00	25.00	200.00	1.10	475.24	49.56	25.00	32.00
Weisbaugh	W. A. Moore	210.75	204.00	6.75	15.00	1.50	203.94	2.00	63.00	30.00	25.00	200.00	1.10	475.24	49.56	25.00	32.00
Granitsburg	Chas. W. McHenry	95.33	44.50	3.00	12.00	5.75	64.50	11.00	312.34	98.50	200.00	1.10	475.24	49.56	25.00	32.00	7.00
New Concord	Marion French	167.40	167.40	12.00	5.00	5.75	64.50	11.00	312.34	98.50	200.00	1.10	475.24	49.56	25.00		



Yrs. Mos.	How Long on Charge	Total Indebtedness	Valuation of Church Property	Balance on Hand	Total Paid Out	Total Amount Received	By Church	Young Peoples Society	In Special Offering	In Birthday Offering	In Regular Offering	Amount Received by Sun. School	Sunday School Expenses	Paid on Incidentals	Paid on Rent	Paid on Gen. Pub. Interest
2	2	25.00	4,500.00	69.97	674.87	675.56	253.20	234.18	1.12	4.60	71.22	116.90	10.44	84.96	300.00	5.00
4	4	3,500.00	6,000.00	27.05	4,622.78	4,636.83	2,412.20	1,318.20	16.54	3.70	13.85	242.20	17.20	198.81	198.81	3.25
4	4	1,700.00	2,000.00	18.75	1,498.78	1,498.78	1,459.38	23.06	24.04	23.30	14.25	256.41	18.23	198.81	198.81	3.25
1	1	327.00	3,500.00	78.73	1,324.27	1,403.20	1,459.38	23.06	54.12	7.32	89.98	247.48	77.34	206.61	128.00	7.60
1	1	327.00	3,500.00	6.95	1,543.38	1,623.38	1,459.38	23.06	6.63	3.02	69.06	27.48	58.86	179.61	150.00	2.50
1	1	1,400.00	2,000.00	39.53	4,747.18	4,747.18	4,421.16	23.06	6.63	3.02	22.28	49.03	22.84	134.51	60.00	5.00
1	1	1,400.00	3,500.00	42.82	2,125.74	2,168.56	1,920.19	123.28	123.28	9.69	35.70	83.07	83.07	232.86	216.00	5.15
8	8	622.00	3,000.00	19.18	1,052.11	1,071.24	1,08.89	68.03	14.28	14.28	7.01	116.90	82.55	15.00	1.00	1.00
2	2	5,500.00	4,500.00	35.85	1,18.67	1,18.67	2,731.72	107.68	180.54	18.41	242.20	256.41	77.00	658.40	5.00	5.00
2	2	5,500.00	4,500.00	9.10	2,487.38	2,496.48	1,645.49	107.68	180.54	18.41	343.17	256.41	247.48	228.03	5.00	5.00
2	2	1,500.00	4,000.00	78.85	3,088.76	3,166.91	2,638.93	382.36	92.02	17.77	146.62	49.03	57.50	32.63	1.00	1.00
2	2	1,750.00	1,500.00	8.60	631.20	661.04	553.64	13.32	6.14	6.14	76.86	83.00	61.07	22.63	1.00	1.00
1	1	175.00	1,500.00	5.97	270.48	270.48	279.08	13.32	6.14	6.14	66.07	141.94	9.45	37.43	1.00	1.00
1	1	2,450.00	2,450.00	2.82	727.78	727.75	585.81	13.32	6.14	6.14	14.27	70.78	9.45	167.27	1.00	1.00
7	7	585.65	3,000.00	35.43	1,614.82	1,663.12	1,369.74	21.91	73.49	11.52	178.47	238.38	195.55	167.27	1.00	1.00
1	1	5,000.00	5,000.00	3.82	1,460.97	1,506.40	1,480.86	1,480.86	11.52	14.00	51.54	238.38	195.55	167.27	1.00	1.00
1	1	5,000.00	5,000.00	14.79	1,693.50	1,702.32	1,730.94	21.91	55.94	5.60	33.00	188.34	161.25	124.09	1.00	1.00
2	2	1,400.00	3,500.00	1.38	1,831.50	1,846.29	835.62	4.68	5.60	5.60	60.88	83.21	76.13	124.09	1.00	1.00
3	3	1,800.00	3,500.00	14.96	593.52	610.48	599.38	4.68	5.60	5.60	60.88	83.21	76.13	124.09	1.00	1.00
6	6	1,800.00	3,500.00	8.35	1,943.80	1,957.15	802.27	4.68	5.60	5.60	60.88	83.21	76.13	124.09	1.00	1.00
5	5	1,300.00	7,000.00	12.36	2,403.54	2,567.89	2,303.14	7.00	65.16	4.18	70.14	74.32	70.88	56.00	9.00	9.00
6	6	600.00	4,000.00	6.92	1,183.76	1,183.76	1,104.84	1.104.84	2.78	3.27	20.83	26.88	25.00	42.11	8.50	8.50
1	1	2,000.00	2,000.00	9.80	933.38	933.38	933.38	933.38	2.78	3.27	20.83	26.88	25.00	42.11	8.50	8.50
7	7	800.00	3,000.00	2.17	189.69	191.86	189.69	189.69	2.78	3.27	20.83	26.88	25.00	42.11	8.50	8.50
1	1	51.00	3,000.00	10.50	546.10	556.10	556.10	556.10	2.78	3.27	20.83	26.88	25.00	42.11	8.50	8.50
1	1	2,500.00	2,500.00	12.71	1,193.81	1,202.31	925.57	925.57	2.78	3.27	20.83	26.88	25.00	42.11	8.50	8.50
1	1	2,500.00	2,500.00	4.62	1,958.56	1,958.56	722.40	722.40	2.78	3.27	20.83	26.88	25.00	42.11	8.50	8.50
3	3	666.00	7,000.00	37.15	798.31	835.46	1,108.58	1,108.58	2.78	3.27	20.83	26.88	25.00	42.11	8.50	8.50
4	4	55.00	2,500.00	2.87	1,108.58	1,239.08	38.00	38.00	2.78	3.27	20.83	26.88	25.00	42.11	8.50	8.50
1	1	2,500.00	2,500.00	2.60	737.30	739.90	679.54	679.54	2.78	3.27	20.83	26.88	25.00	42.11	8.50	8.50
1	1	2,000.00	4,500.00	38.21	234.30	237.90	237.97	237.97	2.78	3.27	20.83	26.88	25.00	42.11	8.50	8.50
4	4	600.00	5,000.00	23.54	1,228.40	1,320.26	601.41	601.41	2.78	3.27	20.83	26.88	25.00	42.11	8.50	8.50
1	1	600.00	4,000.00	29.50	1,352.02	1,352.56	1,129.91	1,129.91	2.78	3.27	20.83	26.88	25.00	42.11	8.50	8.50
2	2	3,000.00	3,000.00	25.50	1,611.15	1,611.15	1,611.15	1,611.15	2.78	3.27	20.83	26.88	25.00	42.11	8.50	8.50
1	1	600.00	6,000.00	.25	800.66	800.66	237.84	237.84	2.78	3.27	20.83	26.88	25.00	42.11	8.50	8.50
2	2	3,000.00	3,000.00	4.83	2,378.44	2,378.44	1,540.11	1,540.11	2.78	3.27	20.83	26.88	25.00	42.11	8.50	8.50
2	2	3,000.00	3,000.00	9.80	1,164.61	1,164.61	1,083.58	1,083.58	2.78	3.27	20.83	26.88	25.00	42.11	8.50	8.50
3	3	3,000.00	6,500.00	9.80	1,193.37	1,193.37	1,083.58	1,083.58	2.78	3.27	20.83	26.88	25.00	42.11	8.50	8.50
2	2	3,000.00	1,000.00	7.68	1,080.82	1,090.60	991.99	991.99	2.78	3.27	20.83	26.88	25.00	42.11	8.50	8.50
2	2	3,000.00	2,000.00	4.67	684.84	692.52	652.97	652.97	2.78	3.27	20.83	26.88	25.00	42.11	8.50	8.50
9	9	33.00	1,800.00	7.61	230.69	235.36	201.15	201.15	2.78	3.27	20.83	26.88	25.00	42.11	8.50	8.50
1	1	1,200.00	2,000.00	14.476	150.37	150.37	399.00	399.00	2.78	3.27	20.83	26.88	25.00	42.11	8.50	8.50
1	1	617.11	7,000.00	10.00	399.00	399.00	3,201.70	3,201.70	2.78	3.27	20.83	26.88	25.00	42.11	8.50	8.50
3	3	1,400.00	4,200.00	4.30	3,191.70	3,191.70	1,471.1	1,471.1	2.78	3.27	20.83	26.88	25.00	42.11	8.50	8.50
1	1	500.00	2,000.00	6.47	365.51	365.51	426.04	426.04	2.78	3.27	20.83	26.88	25.00	42.11	8.50	8.50
2	2	2,000.00	4,200.00	4.30	341.21	341.21	162.04	162.04	2.78	3.27	20.83	26.88	25.00	42.11	8.50	8.50
1	1	200.00	2,000.00	36.90	674.01	674.01	609.91	609.91	2.78	3.27	20.83	26.88	25.00	42.11	8.50	8.50
1	1	2,000.00	2,000.00	2.16	1,487.09	1,487.09	1,355.45	1,355.45	2.78	3.27	20.83	26.88	25.00	42.11	8.50	8.50
1	1	10.00	3,000.00	51.17	1,487.09	1,487.09	1,087.45	1,087.45	2.78	3.27	20.83	26.88	25.00	42.11	8.50	8.50
2	2	723.56	2,100.00	9.54	1,493.26	1,493.26	241.12	241.12	2.78	3.27	20.83	26.88	25.00	42.11	8.50	8.50
1	1	500.00	400.00	223.31	275.54	287.45	223.31	223.31	2.78	3.27	20.83	26.88	25.00	42.11	8.50	8.50
10	10	617.11	400.00	9.54	275.54	287.45	223.31	223.31	2.78	3.27	20.83	26.88	25.00	42.11	8.50	8.50
7	7	1,400.00	500.00	2.54	223.31	223.31	1,001.82	1,001.82	2.78	3.27	20.83	26.88	25.00	42.11	8.50	8.50
2	2	1,245.00	3,150.00	13.10	988.87	1,001.82	590.98	590.98	2.78	3.27	20.83	26.88	25.00	42.11	8.50	8.50
2	2	2,000.00	2,000.00	2.84	354.53	354.53	322.15	322.15	2.78	3.27	20.83	26.88	25.00	42.11	8.50	8.50
2	2	2,000.00	2,000.00	2.54	284.95	284.95	197.05	197.05	2.78	3.27	20.83	26.88	25.00	42.11	8.50	8.50
2	2	3,000.00	3,000.00	87.08	3,811.31	3,908.39	3,213.69	3,213.69	2.78	3.27	20.83	26.88	25.00	42.11	8.50	8.50
2	2	3,000.00	3,000.00	35.69	1,647.62	1,682.41	1,481.31	1,481.31	2.78	3.27	20.83	26.88	25.00	42.11	8.50	8.50
2	2	1,200.00	1,200.00	13.08	785.32	785.32	712.00	712.00	2.78	3.27	20.83	26.88	25.00	42.11	8.50	8.50
1	1	2,000.00	2,000.00	2.92	474.66	474.66	1,126.77	1,126.77	2.78	3.27	20.83	26.88	25.00	42.11	8.50	8.50
1	1	30.00	5,500.00	.80	1,126.77	1,126.77	1,007.97	1,007.97	2.78	3.27	20.83	26.88	25.00	42.11	8.50	8.50
7	7	460.00	4,000.00	54.0	1,982.73	2,087.33	2,087.33	2,087.33	2.78	3.27	20.83	26.88	25.00	42.11	8.50	8.50
2	2	2,500.00	2,500.00	1.99	274.44	284.43	157.80	157.80	2.78	3.27	20.83	26.88	25.00	42.11	8.50	8.50
9	9	280.00	1,500.00	8.99	186.65	195.64	251.73	251.73	2.78	3.27	20.83	26.88	25.00	42.11	8.50	8.50
1	1	280.00	1,500.00	2.21	260.00	282.21	251.73	251.73	2.78	3.27	20.83	26.88	25.00	42.11	8.50	8.50
1	1	280.00	1,500.00	2.21	260.00	282.21	251.73	251.73	2.78	3.27	20.83	26.88	25.00	42.11	8.50	8.50
1	1	280.00	1,500.00	2.21	260.00	282.21	251.73	251.73	2.78	3.27	20.83	26.88	25.00	42.11	8.50	8.50
1	1	280.00	1,500.00	2.21	260.00	282.21	251.73	251.73	2.78	3.27	20.83	26.88	25.00	42.11	8.50	8.50
1	1	280.00	1,500.00	2.21	260.00	282.21	251.73	251.73	2.78	3.27	20.83	26.88	25.00	42.11	8.50	8.50
1	1	280.00	1,500.00	2.21	260.00	282.21	251.73	251.73	2.78	3.27	20.83	26.88	25.00	42.11	8.50	8.50
1	1	280.00														

# *Evangelistic Report*

NAMES	No. Sermons Preached	No. Revivals Held in P. H. C.	No. Revivals Held Elsewhere	No Revivals Assisted in	Total No. Revivals Held	No. Professed Regeneration	No. Professed Sanctification	No. Baptisms	No Children Dedicated	No. Prayed with or Anointed for Healing	Marriages	Funerals	No Books Read	Pages Read	No. Subscriptions for Advocate	No. Churches Organized	Money Raised for Home Missions	Money Raised for Foreign Missions	Money Raised for Bethel Orphanage	Amount Raised for Support	Amount Gifts and Donations	Total Support	No. Miles Traveled	Are You a Subscriber to Advocate	Do You Tithe	Do you place Tithe in P. H. C.
Hattie Dunkelberger	12	1	1		2	6	19			1	1	3	4	1087	5								1000	Yes	Yes	Yes
Edith Trotzke	120	4	2		6	29	19			2	3	3	4	1127						284.00	5.00	289.00	2440	Yes	Yes	Part
Wm. S. Dean	244	13			13	187	108		1	25	1	1	3	1127						1,007.00			2440	Yes	Yes	Yes
Garner Jewell	60		5		3	35	30			15	1	3	8	1500						360.00			500	Yes	Yes	Yes
Joseph Glispy	20	2		1	3	20				6										8.00	6.00	14.00	100	Yes	Yes	Yes
Kate Glispy	21			2	2	25	3			6			2	100						8.00	10.00	18.00	200	Yes	Yes	Yes
Mrs. E. A. Schooley	75	1	1		2	28	75			50		1				1	6.00	5.00		8.00		125.00	400	Yes	Yes	Yes
Gilbert Goins	125	4	6		10	76	30			17		1	6	1500								125.00	2300	Yes	Yes	Yes
J. A. Akers	21	3	3		3	18		4	1	3			3	3500									350	Yes	Yes	Yes
Viola Lounsbury	25	1			1	40	10				1	7								20.00		20.00		Yes	Yes	Yes
Cora White	77	4			4	43							1	800						116.00		116.00		Yes	Yes	Yes
Alice M. Hart	23					4				4			1											Yes	Yes	Yes
Melvin Pratt	189	6	3		9	86	34		3	90		1	11	2816	12					414.80		414.80	14900	Yes	Yes	Yes
G. C. Middleton	155	8			8	50	25		1	50			31	6377									1944	Yes	Yes	Yes
Beryl Weismantel	20	1				17	2			2			35	6075									490			
J. W. Anderson	205	4	1		5	45	10			100			5	1050	1					379.00		379.00	2050	Yes	Yes	Yes
Aaron Hayhurst	255	13			13	190	90			75			12							900.00				Yes	Yes	Yes
Francis Porter	32	2			2	11	7			9		2								25.00				Yes	Yes	Yes
J. H. Carroll	183	8	2		10	100	42	4		22		4			15	1				645.55				Yes	Yes	Yes
James Hoover	63	3			3	24	16	12		38		2	4	1000						40.00			2218	Yes	Yes	Yes
J. L. Thornton	118	7	2		9	58	49			15			6	1089						458.94			1500	Yes	Yes	Part
Retta Baughman	61	1	3		4	80	40	2		10			12	3578						93.00	5.00	98.00		Yes	Yes	Yes
Mattie Shelton	78	1			1	13	7			36		2	5	691			1	2.50		15.13	7.00	22.30		Yes	Yes	Yes
Ida Stewart	30					40	24			8			4	850						142.74				Yes	Yes	Yes
E. V. Holt	109	1	8		9	73	10			12			3	650										Yes	Yes	Yes
Arthur Harris	13					3																				
*C. D. Jester, Song Evangelist	10	5	2	1																518.00			1952	Yes	Yes	Yes
* Services Conducted, 92.	2444	89	40	30	106	1274	601	36	6	615	6	27	155	33,790	33	2	1	\$8.50	\$5.00	\$5,560.16	\$33.00	\$1,496.10	34,255			

## Deaconesses' Reports

	Homes Visited	Sick Visited	Poor Helped	Prayer Meetings Conducted	Regenerated No. of Professions	Sanctified	Anointed for Healing	Garment Distributed	Money for Poor	Books Read	Pages	Subscriptions for Church Paper	Books Given Out	Pages Distributed	Taking Church Paper	Ordained	Licensed
Miss Clyde Titus ----	2894						15	355	\$ 9.13				22	11,112	Yes	Yes	
Mrs. Alice Brady ----	86	16	126	41		1	6	40	11.30					446	Yes	Yes	
Martha Noggle ----	16	8			1		1			11	1004				Yes	Yes	
Emma Hibler ----	267	83	38	13	2	1	18	46		5	1112				Yes	Yes	
Bertha Moser ----	77	34					44	6	60.00	3	700	2			Yes	Yes	Yes
Alma Moser ----	77	35		1			44	1	40.00	3	400	1			Yes	Yes	Yes
Rachel Moser ----	79	35		2			44	1	50.00	3	1204	4			Yes	Yes	Yes
	3486	211	164	59	3	2	172	449	\$170.43	31	4420	7	22	11,558			

# PASTORS' CHURCHES

CHURCHES	PASTORS	Churches	Church Buildings	Under Construction	Organized This Year	Parsonages	No. Preaching Services	No. Church Prayer Meetings	No. Cottage Prayer Meetings	Total No Services	No. Members Dropped	No. Transf. by Letter	No. of Deaths	Total No. Removals	Adds. by Prof. of Faith	Additions by Letter	Net Gain Since Last Rept.	Net Loss Since Last Rept.	Total Membership	Sermons Preached	Pastoral Calls Among Members	Among Others
Greenwood	Rev. Oscar Deckard	1	3			1	232	50	21	272	6	1		6	4	1	1	1	19	13	71	41
Coalmont	Mrs. Ruby Parr	1	1			1	138	78	46	184	5			5	2	3	2	2	13	70	30	16
Linton	Mary Friend	1	2			1	137	46	40	177	1			1	2			2	51	70	29	54
Lafayette	D. E. Snow	1	1			1	122	58	180	180				4	23	18	18	101	74	179	119	
Jacksonville	Augusta Lewis	1	1			1	92	51	26	118	6			7	7	1	1	20	71	45	38	
Logansport	C. E. Snow	1	1			1	176	39	30	206	1			12	12	7	12	42	89	225	106	
Cory	Crawford Hass	1	1			1	180	143	173	173				2	5			20	60	20		
Edwood	George Huff	1	1			1	134	45	6	197	12			16	13			3	108	55	439	
Leisure	L. B. Scanland	1	1			1	140	35	35	210	18			2	18			18	16	52	98	75
Anderson, 2nd Church	A. B. Grubbe	1	1			1	151	52	56	243	4			6	8	7	12	4	32	76	146	
College Corner	Elmer Klopstein	1	1			1	151	50	15	158				2	11	4	16	17	17	115	60	
Lebanon	B. H. Colon	1	1			1	144	52	42	238	32			6	11	19	12	36	103	130	25	
East Enterprise	Frank Edwards	1	1			1	143	46	31	236	10			8	22	6	2	32	97	97	230	80
Marion	E. J. Clem	1	1			1	133	52	42	238	6			6	11	4	16	30	82	236	18	
Anderson	D. J. Fortner	1	1			1	138	46	31	236	10			8	22	6	2	32	97	97	230	80
Madison	E. W. Wade	1	1			1	140	44	48	227	6			8	2	2		4	10	10	13	2
Michigan	J. Frank Rogers	1	1			1	134	44	48	186	14			16	4			12	55	128	131	57
Muncie	Pearl Dean	1	1			1	104	70	35	186	14			16	4			12	55	128	131	57
Middleton	E. P. Shrock	1	1			1	151	44	48	230	14			14	25	1	1	13	60	69	162	119
New Castle	Wilbert McCrooy	1	1			1	173	30	37	237	14			14	59	2	27	13	56	127	274	67
Muncie Tabernacle	H. A. Shepherd	1	1			1	134	50	41	245	4			15	14			4	20	84	147	134
Orleans	R. W. Chatfield	1	1			1	138	52	52	242	13			2	16	14	7	2	61	119	279	
Lawrenceburg	L. J. Snyder	1	1			1	88	73	161	161				1	17	7	7	32	37	46	70	10
Scott City	Jesse Hayhurst	1	1			1	136	62	13	201	6			1	13			12	32	78	93	97
Terre Haute, Greenwood St.	W. J. Crider	1	1			1	150	90	33	283	7			1	15	3	11	12	42	50	326	
Terre Haute, Hulman St.	E. V. Halt	1	1			1	138	52	210	210				1	9	5	11	9	92	75	81	
Terre Haute, Main St. Mts.	R. K. Smith	1	1			1	136	38	38	202	11			12	3			3	22	58	36	
Richmond	Adam Schwing	1	1			1	115	52	38	167				1	1	1		1	14	73	31	28
Richmond Sun	G. W. Chamberland	1	1			1	99	51	150	150				1	1			2	29	78	8	0
Noblesville	Marian French	1	1			1	48	100	38	148	2			19	1			1	25	40	21	
Rochester	Catherine Humm	1	1			1	151	52	6	178	10			10	3	1		16	18	70	45	14
Sanford	G. W. Braden	1	1			1	102	32	6	160	9			2	10			1	25	40	21	
Mt. Zion	W. E. Jewell	1	1			1	166	49	125	125				2	1			2	34	73	50	94
Sullivan	Chas. Spear	1	1			1	104	58	3	168	9			11	1			13	31	114	100	
East Columbus	J. H. Plunkett	1	1			1	113	52	7	150	6			1	1			5	32	115	71	11
New Carlisle	John Kennedy	1	1			1	113	52	3	238	2			1	1			5	32	115	71	11
North Vernon	Elta Harvey	1	1			1	91	52	25	125	1			1	2			3	18	100	20	10
Aurora	Luther Mager	1	1			1	100	68	32	238	2			1	2			3	20	192	98	85
Jackson Hollow	Will Rice	1	1			1	126	88	10	229	3			4	9			3	21	72	66	24
Medora	Howard Beecher	1	1			1	133	86	78	277	5			1	3	1		12	48	86	53	38
Seymour	Angus Jeffers	1	1			1	133	86	78	277	5			1	3	1		12	48	86	53	38
Delphi	Mr. & Mrs. Edw. Schoeff	1	1			1	20	51	156	156	1			5	7			1	11	30	10	107
Evansville, 2nd Church	D. D. Fortner	1	1			1	105	51	50	94				1	29	14		1	11	30	10	107
New Concord	J. H. Carroll	1	1			1	39	5	50	94				1	7			3	23	34	43	
DuPont	Geo. Thronburg	1	1			1	178	42	42	262	7			11	7			4	64	151	224	15
Reguon's Chapel	J. H. Crusier	1	1			1	104	47	90	1				1	10			4	45	65	160	150
Bas Lake	W. F. Semm	1	1			1	80	60	1	111	1			1	6			24	73	5	10	
Bicknell	Charles McHenry	1	1			1	50	25	5	80				1	1			1	19	50	30	16
Brown's Chapel	W. A. Moore	1	1			1	51	46	97	1				1	1			1	19	50	30	16
Mabel Corner	James Douglas	1	1			1	102	52	5	153	1			1	1			3	33	129	130	9
New London	C. A. Fouts	1	1			1	100	40	39	179	7			1	12			54	72	55	106	
Grantsburg	W. B. Fugett	1	1			1	143	46	40	229	30			1	1			40	88	129	130	9
Shoals	Dorcy Schenck	1	1			1	130	41	41	236	12			1	18			52	52	168	274	
Huntington	Floyd Goins	1	1			1	143	47	2	192	1			1	5			34	86	67	83	
Wabash	Harry Adams	1	1			1	109	40	15	164	1			9	31			36	79	103	16	
Thomtown	B. H. Colen	1	1			1	156	20	31	107				1	1			12	49	25	17	
Walkerston	J. H. Sibrel	1	1			1	160	60	31	229	5			1	6			88	58	221	33	
Winchester	Scrph Plunkett	1	1			1	113	52	12	177	6			1	17			50	65	29	13	
Indianapolis, 1st & 3rd Ch.	W. A. Faye	1	1			1	75	100	42	312	1			6	5	11		22	33	35	20	
Indianapolis, 2nd Church	Frank Cox	1	1			1	113	62	27	204				1	9			9	61	31	15	
Frankfort, 1st Church	S. L. Baker	1	1			1	83	31	63	63				1	1			20	32	36	30	
Frankfort, 2nd Church	Frank Cox	1	1			1	83	31	63	63				1	1			20	32	36	30	
Hartsville	Frank Cox	1	1			1	83	31	63	63				1	1			20	32	36	30	
Frankton	Frank Cox	1	1			1	83	31	63	63				1	1			20	32	36	30	
Evansville, 1st Church	Frank Cox	1	1			1	83	31	63	63				1	1			20	32	36	30	
West Port	Ernest Crowder	1	1			1	135	52	47	241				4	5			71	89	198	95	
Greensburg	Arthur McQueen	1	1			1	104	52	156	104				1	1			42	42	95	50	
Tyner	E. C. Rhoads	1	1			1	104	52	156	104				1	1			42	42	95	50	
Kokomo	P. D. Guyer	1	1			1	185	49	30	264	4			4	15			1	35	100	30	
Edinburg	Supplied	1	1			1	50	23	6	79				4	15			66	185	233	25	
Concord	Supplied	1	1			1	50	23	6	79				4	15			66	185	233	25	
Forest	Supplied	1	1			1	50	23	6	79				4	15			66	185	233	25	
Hope	S. L. Baker	1	1			1	8	24	30	30				4	8			4	31	36	15	
Mitchell	S. L. Baker	1	1			1	8	24	30	30				4	8			4	31	36	15	
Versailles	S. L. Baker	1	1			1	8	24	30	30				4	8			4	31	36	15	
Woodstock	S. L. Baker	1	1			1	8	24	30	30				4	8			4	31	36	15	
Woodlawn	S. L. Baker	1	1			1	8	24	30	30				4	8			4	31	36	15	
Versailles	S. L. Baker	1	1			1	8	24	30	30				4	8			4	31	36	15	
Forest	S. L. Baker	1	1			1	8	24	30	30				4	8			4	31	36	15	
Howard Goins	S. L. Baker	1	1			1	8	24	30	30				4	8			4	31	36	15	
Howard Goins	S. L. Baker	1	1			1	8	24	30	30				4	8			4	31	36	15	

27a

# STATISTICAL REPORT

[illegible]