

Shelf

MINUTES
of the
Thirty-Eighth Annual
ASSEMBLY

of

INDIANA
PILGRIM HOLINESS
CHURCH

Wesleyan Church
ARCHIVES

FRANKFORT, INDIANA

August 18, 19, 1941

Journal of Proceedings

OF THE

THIRTY-EIGHTH ANNUAL ASSEMBLY

INDIANA DISTRICT

PILGRIM HOLINESS CHURCH

Frankfort, Indiana

AUGUST 18, 19, 1941

Editors: F. B. Dunn, Icie Ashby

**Wesleyan Church
ARCHIVES**

CONTENTS

	Page
Official Directory	3
Journal of Proceedings	5
Delegates to General Assembly	8
Rules Concerning Reports	9
Zone Arrangement and Zone Leadership	9
Reports of Officers, Boards, and Committees	11
District Superintendent's Report	11
Assistant District Superintendent's Report	12
Auditing Committee's Report	12
District Treasurer's Report	12
Camp Meeting Treasurer's Report	14
Bible School Financial Report	15
Educational Board's Report	16
Ways and Means Committee's Report	17
Resolutions Committee's Report	22
Examining Board's Report	24
Ordained Ministers	24
Licensed Ministers	27
Evangelists and Evangelistic Singers	29, 30
Deaconesses, Missionaries, etc.	30
Stationing Committee's Report	31
District Statistician's Report	33
Deaconesses' Report	33
Church Reports	33
Evangelists' and Unstationed Ministers' Report	64

OFFICIAL DIRECTORY

OFFICERS

District Superintendent Rev. Area Montgomery
2915 N. Station St., Indianapolis, Ind.
Assistant Superintendent Rev. Floyd Goins
509 W. South St., Frankfort, Ind.
District Secretary Rev. F. B. Dunn
450 Douglas St., Tipton, Ind.
District Treasurer Rev. E. V. Halt
1609 N. Delaware St., Indianapolis, Ind.

Advisory Members

Rev. Aaron Hayhurst 2518 E. Thirtieth St., Indianapolis, Ind.
Rev. Edward Schoeff 222 E. Pennsylvania St., Shelbyville, Ind.
Rev. C. G. Taylor 655 W. Freeman St., Frankfort, Ind.
Rev. George Huff 1442 Cruft St., Indianapolis, Ind.
Rev. L. L. Waddell 2406 Delaware St., Anderson, Ind.

District Statistician

Rev. Mark Storey 1112 S. Hackley St., Muncie, Ind.

Trustees of the Indiana District

Rev. George Huff Rev. Area Montgomery Rev. Edward Schoeff
Rev. E. V. Halt Rev. C. G. Taylor

BOARDS AND COMMITTEES

Ways and Means Committee

Rev. William McFarlin Rev. E. W. Wright Rev. C. D. Jester
Rev. Ralph McCrory Rev. Melvin Snyder

Resolutions Committee

Rev. Hattie Dunkleberger Rev. Beulah Arnett Rev. Eula Kennedy

Home Missionary Committee

District Council

Ordination Committee

Rev. Area Montgomery Rev. George Huff Rev. Edward Schoeff
Rev. C. G. Taylor Rev. W. A. Frye

Auditing Committee

Rev. Dennis Barber Rev. Lillian Marley Mrs. Gertrude Leslie
Rev. E. E. Crowder

Reception Committee

Rev. E. J. Clem Rev. Loyd Montgomery Rev. Gilbert Noel

Examining Board

Rev. W. S. Dean, Rev. W. A. Frye Each to serve three years
Rev. Aaron Hayhurst, Rev. Thurman Preusz Each to serve two years
Rev. Edward Schoeff, Rev. Jesse Hayhurst Each to serve one year

Educational Board

Rev. C. G. Taylor, Rev. Alice Hart Each to serve three years
Rev. Lester Henry, Rev. Harry Shepherd Each to serve two years
Rev. Imogene McFarlin, Mrs. Ruth Storey Each to serve one year

Frankfort School Board

Rev. Area Montgomery Rev. Carl Reed Rev. Floyd Goins
Rev. F. B. Dunn Rev. Mark Storey

Camp Meeting Board

Rev. W. A. Frye Rev. O. W. Barnes Rev. Ray Smith
Rev. Angus Jeffers Rev. C. D. Jester Rev. Lester Mayhew
Rev. Virgil Camp Rev. Thurman Preusz Rev. Jesse Hayhurst
Rev. James Pursley Rev. Clarence Morrison Rev. Aaron Hayhurst
Rev. Melvin Snyder

Shoemaker Memorial Old People's Home Board

District Council

Committee to Arrange District Young People's Rally

Rev. Virgil Camp Rev. Ralph Nibarger
Zone Young People's Chairmen

Committee to Arrange District Ministerial Convention

Rev. Loyd Montgomery Rev. E. W. Hall Rev. Virgil Camp

JOURNAL OF PROCEEDINGS

FIRST SITTING

The Thirty-eighth Annual Assembly of the Indiana District convened in the tabernacle at Frankfort, Indiana, August 18, 1941 at 9:00 A. M.

The Assembly was opened with a devotional service in charge of Rev. Lindley Arnett. Rev. Vard Van Briggles read the first chapter of I Corinthians. Rev. E. W. Hall led in prayer.

Rev. W. L. Surbrook was introduced to the Assembly. He addressed the Assembly, giving a timely and inspirational exhortation.

The Secretary called the ministerial roll.

A motion prevailed that the Assembly bar be set to include the four main sections of the tabernacle back to the third post, exclusive of the wings and including the platform.

A motion prevailed that the hours of session be as follows: 8:30 A. M. to 11:30 A. M., 1:30 P. M. to 4:30 P. M., and 7:00 P. M. to 9:00 P. M.

The District Superintendent's report was read and accepted. (Printed in Reports of Officers, Boards, and Committees.)

A motion prevailed that the new churches, Paoli, and Indianapolis, Virginia Avenue, be received in the Assembly.

The report of the District Statistician was read and accepted. (Printed in Reports of Officers, Boards, and Committees.)

A motion prevailed that the names of the ministers not sending in reports on time to the District Statistician be referred to the Examining Board.

A motion prevailed to recess until 1:30 P. M. Rev. Area Montgomery dismissed the Assembly with prayer.

The session reconvened by singing, "Leaning on the Everlasting Arms." Rev. Walter Daugherty led in prayer after which Rev. Billman read the third chapter of I John, with comment.

The Assistant Superintendent's report was read and accepted. (Printed in Reports of Officers, Boards, and Committees.)

A motion prevailed to recess until 7:00 P. M. Rev. Area Montgomery dismissed with prayer.

The session reconvened by singing a verse of song. Rev. Clarence Hamilton led in prayer after which Rev. E. W. Hall read the scripture.

The Ways and Means Committee gave a partial report. (Printed in Reports of Officers, Boards, and Committees.)

The Examining Board gave a partial report. (Printed in Reports of Officers, Boards, and Committees.)

The reports of the Auditing Committee and District Treasurer were read and accepted. (Printed in Reports of Officers, Boards, and Committees.)

Rev. and Mrs. H. T. Mills of Owosso, Michigan, were introduced to the Assembly.

The Camp Meeting Treasurer's report was read and accepted. (Printed in Reports of Officers, Boards, and Committees.)

A motion prevailed to extend the time long enough to hear the report of the Resolutions' Committee. This report was read and accepted. (Printed in Reports of Officers, Boards, and Committees.)

A motion prevailed to adjourn. Rev. H. T. Mills dismissed the Assembly.

SECOND SITTING

The second sitting opened with a memorial service in memory of Rev. W. C. Stone and Rev. Kate Glispy. Rev. Arnett let the Assembly

in singing, "The Haven of Rest." Rev. George Huff led in prayer. Rev. Surbrook and Rev. Area Montgomery gave brief talks. The devotional service was closed by singing, "What a Friend We Have in Jesus."

The Secretary called the roll of the delegates. The Secretary called the roll of the churches and the pastors responded with the number of Advocate subscriptions they would endeavor to get this coming year. The total number promised was 2,039.

The minutes of the last sitting were read and accepted.

Mrs. Shearer was introduced to the Assembly. A motion prevailed that she be granted an honorary seat within the Conference bar.

A motion prevailed that immediately after noon the order of the day be the election of officers.

A motion prevailed to recess for ten minutes.

The session reconvened by singing, "Amazing Grace."

The Ways and Means Committee gave a partial report. (Printed in Report of Officers, Boards, and Committees.)

A motion prevailed that Rev. Gilbert Pegg, a local preacher pastoring a church, be granted a seat within the Conference bar.

A motion prevailed that our District Secretary be authorized to obtain extra help, this to be paid in proportion to the amount paid to the district stenographer.

A motion prevailed to recess until 1:30 P. M. Rev. Area Montgomery dismissed with prayer.

The session reconvened by singing, "His Way with Thee." Rev. Ralph Nibarger led in prayer. Rev. William McFarlin read the 84th Psalm.

A motion prevailed to postpone the order of the day until after a partial report of the Ways and Means Committee.

Dr. Moran, evangelist from the Ohio District, was introduced to the Assembly.

A motion prevailed that the District Superintendent appoint six tellers. They were appointed.

Rev. Area Montgomery was re-elected as District Superintendent.

Rev. George Huff was re-elected Assistant District Superintendent by acclamation.

Ballots were cast for District Secretary. Rev. F. B. Dunn was re-elected.

Rev. E. V. Halt was re-elected for District Treasurer.

A motion prevailed that the people be requested to lay their District Minutes aside and not refer to them while casting ballots for the Advisory Board.

A motion prevailed that five names be placed on the ballots for the members of the Advisory Board.

A motion prevailed that the counting of the ballots cast for the members of the Advisory Board be postponed and the election proceed.

A motion prevailed that the matter of alternates to the General Assembly be left to the discretion of the Council.

The evangelists were introduced to the Assembly.

The Ways and Means Committee gave a partial report. (Printed in Reports of Officers, Boards, and Committees.)

A motion prevailed to extend the time until 5:00 P. M.

A motion prevailed to refer to the District Council the recommendation with regards to the caretaker for the campgrounds.

A motion prevailed that the District Superintendent appoint a nominating committee to bring in names for members of the other committees.

The tellers reported the count of the ballots cast for the Advisory Board. Rev. Floyd Goins, Rev. L. L. Waddell, and Rev. Edward Schoeff were elected. A motion prevailed that ballots be cast for the two remaining members of the Advisory Board, voting for two of the next three highest, Rev. W. A. Frye, Rev. C. G. Taylor, and Rev. Aaron Hayhurst.

The session adjourned by the expiration of time. Rev. Jack Donovan dismissed with prayer.

THIRD SITTING

The third sitting was opened by singing, "When We All Get to Heaven." Rev. Hertle read the scripture, with comment. Rev. Loyd Montgomery led in prayer. The Assembly was favored with a song by the Hamilton trio and also with a song by the Preachers' Daughters' Quartette.

A motion prevailed to dispense with the roll call for the remainder of the Assembly.

A motion prevailed that the reading of the minutes of the second sitting be dispensed with.

The tellers reported the count of the ballots cast for the two remaining members of the Advisory Board. Rev. C. G. Taylor and Rev. Aaron Hayhurst were elected.

The District Secretary read the resignation of Rev. George Huff, Assistant District Superintendent, who resigned because of ill health.

Ballots were cast for Assistant District Superintendent.

A motion prevailed that the present trustees be re-elected by acclamation.

The District Council reported their nominations for the Examining Board and Educational Board.

A motion prevailed that Rev. W. S. Dean and Rev. W. A. Frye be re-elected to serve on the Examining Board by acclamation.

A motion prevailed to re-elect by acclamation Rev. C. G. Taylor and Rev. Alice Hart to serve on the Educational Board.

The Nominating Committee nominated Rev. Carl Reed, Floyd Goins, Aaron Hayhurst, Floyd B. Dunn, Lindley Arnett, and Mark Storey to serve on the School Board.

A motion prevailed that the four receiving the largest number of votes be declared elected to serve on the School Board.

The tellers reported the count of the ballots cast for Assistant District Superintendents. Rev. Waddell, Rev. Floyd Goins, and Rev. Edward Schoeff received the highest number of votes.

Rev. Waddell withdrew his name as Assistant District Superintendent.

A motion prevailed to accept the name of Rev. Floyd Goins as Assistant District Superintendent.

A motion prevailed to elect Rev. George Huff to fill the vacancy created on the Council by Rev. Goins being elected as Assistant Superintendent.

The Nominating Committee reported nominations for members to serve on the Camp Meeting Board.

A motion prevailed that W. A. Frye, Angus Jeffers, Virgil Camp, Ray Smith, James Pursley, C. W. Barnes, C. D. Jester, Lester Mayhew, Thurman Preusz, Clarence Morrison, Jesse Hayhurst, Melvin Snyder, and Aaron Hayhurst be re-elected by acclamation to serve on the Camp Meeting Board.

The Nominating Committee read the report of nominations for members to serve on the Ways and Means Committee, Resolutions Committee, Auditing Committee, Reception Committee, and Devotional Committee. This report was accepted. (See Official Directory.)

Rev. A. M. Ewing was introduced to the Assembly.

The Nominating Committee presented the names of Rev. Loyd Montgomery, Rev. E. W. Hall, and Rev. Virgil Camp to serve on a committee to arrange for the Ministerial Convention. This committee was elected by acclamation.

The District Secretary read the names submitted by the District Council of the Ministerial and Lay Delegates to the General Assembly. This report was ratified by the Assembly.

A motion prevailed that in case of an emergency where some of the delegates and alternates elected by the Assembly could not go to the General Assembly, the District Council be delegated to fill the vacancies.

A motion prevailed to extend the time until 10:00 P. M.

The final report of the Examining Board was read and accepted.

The tellers reported the count of the ballots cast for members to serve on the School Board. Rev. Floyd B. Dunn, Rev. Carl Reed, Rev. Floyd Goins, and Rev. Mark Storey were elected.

The Ways and Means Committee gave a final report which was accepted.

The Resolutions Committee presented another resolution which was accepted. (Printed in Reports of Officers, Boards, and Committees.)

Rev. Edward Schoeff read the recommendation from the Examining Board with reference to the new report blank. This was ratified by the Assembly.

A motion prevailed that the Committee on Memorials to the General Assembly meet with the District Council to prepare the Memorials to the General Assembly.

The motion prevailed that the names of all churches, whose first, second, or third quarterly reports are thirty days overdue, be submitted to the District Superintendent for investigation.

French Lick, Indianapolis, First, and Muncie invited the Ministerial Convention. The invitation from French Lick was accepted.

A motion prevailed that the District Secretary send an expression of appreciation to the City of Frankfort for their engineering council and the work done to improve the appearance of the streets and walks surrounding the campgrounds.

Rev. Crouse, of the Virginia District, was introduced to the Assembly and granted an honorary seat within the Assembly bar.

The Financial report of the Frankfort Pilgrim College was read and accepted. (Printed in Reports of Officers, Boards, and Committees.)

The report of the Educational Board was read and accepted. (Printed in Reports of Officers, Boards, and Committees.)

The report of the Stationing Committee was read. (Printed in Reports of Officers, Boards, and Committees.)

A motion prevailed that the reading and approving of the minutes of the last sitting and any other matters that may have been overlooked, be taken care of by the District Council.

The last session of the Thirty-eighth Annual Assembly of the Indiana District of the Pilgrim Holiness Church was closed with a very impressive ordination service opened by singing, "A Charge To Keep I Have." Rev. George Huff led in prayer. Rev. Edward Schoeff, Rev. C. G. Taylor, and Rev. Area Montgomery read some of the duties and qualifications of the ordained minister as recorded in the Bible. Rev. Surbrook gave a timely address to the candidates for ordination after which Revs. Paul W. Ragsdale, Francis Ragsdale, Ellen Roark, Dale Williams, E. W. Grossman, Hascue Carter, and W. O. Toombs were ordained. The service was closed by singing "Rock of Ages." Rev. W. L. Surbrook dismissed the Assembly with prayer.

Note: Due to the fact that Rev. W. O. Toombs was unable to attend the final session of the Assembly, he was ordained in a subsequent service.

DELEGATES TO 1942 GENERAL ASSEMBLY

Ministerial Delegates

Melvin Snyder	Mark Storey	O. W. Barnes
Aaron Hayhurst	C. D. Jester	Clarence Morrison
Jesse Hayhurst	Edward Schoeff	George Huff
Carl Reed	Lester Mayhew	Ralph Nibarger
Angus Jeffers	William S. Dean	Ralph McCrory
W. A. Frye	E. W. Hall	E. W. Wright

Alternates

James Pursley
Gilbert Noel

Virgil Camp
E. I. Faidley

Ray Smith
Lester Henry

Lay Delegates

Clella King
Mrs. A. L. Crider
Perry Shumaker
Edith Hunsucker

Seth Denbo
Mrs. Don Davis
Pearl Neimeir
Miss Glenn Jackson

Gertrude Leslie
Walter Preusz
Gladys Haskin
V. E. Halt

Alternates

Roy Williams
Mrs. Russel Rector

Loren Stoop

Pauline Watson
Sadie Hopper

RULES CONCERNING REPORTS

Quarterly Reports from Churches

One copy to be sent each quarter to the District Superintendent, and one copy to be sent each quarter to the District Statistician.

Annual Reports

1. One copy of the annual report is to be sent to the District Statistician. This report is to be made on the same blank as the quarterly reports.

2. Each unstationed preacher, evangelist, licensed or ordained deaconess shall send an annual report to District Statistician.

3. A special summarized annual report is to be mailed to the District Secretary for publication in the Minutes. This blank is sent out by the Secretary.

Note: See also section under "Reports" in report of Ways and Means Committee.

ZONE ARRANGEMENT AND ZONE LEADERSHIP

Zone 1

Zone Chairman Rev. Virgil Camp
Y. P. Chairman Rev. Darwin Cromer

South Bend
New Carlisle
Walkerton
Tyner

Bass Lake
Fulton
Monon
Wabash

Andrews
Huntington
Logansport

Zone 2

Zone Chairman Rev. Clarence Morrison
Y. P. Chairman Don Ratliff

Frankfort, First
Frankfort, Second
Clark's Hill

Lafayette
Michigantown
Forest
Kokomo

Delphi
Norway
Tipton

Zone 3

Zone Chairman Rev. Melvin Snyder
Y. P. Chairman Rev. Dennis Barber

Anderson, First
Anderson, Missionary
Howard's Chapel
LaFountaine

Marion
Windfall
Leisure
Elwood

Frankton
Jonesboro
Fairmount
Chesterfield

Zone 4

Zone Chairman Rev. O. W. Barnes
Y. P. Chairman Rev. V. A. Leonard

Muncie
Winchester
New Castle

Milton
Centerville
Richmond
Connersville

Rushville
College Corner
Ogden

Zone 5

Zone Chairman	Rev. Ralph McCrory	
Y. P. Chairman	Rev. Dale Williams	
Indianapolis, First	Lebanon	Indianapolis, Third
Indianapolis, Valley View		Indianapolis, Virginia Ave.
Beech Grove	Sheridan	
Greenwood	Noblesville	Indianapolis, Fourth
	Greenfield	Indianapolis, Brookside

Zone 6

Zone Chairman	Rev. Edward Schoeff	
Y. P. Chairman	Rev. Ernest Carroll	
Columbus	Greensburg	Morgantown
Westport	Edinburg	Shelbyville
Hartsville	Spearsville	Clarksburg
Hope		Indianapolis, Second

Zone 7

Zone Chairman	Rev. C. I. Wilson	
Y. P. Chairman	Rev. Eula Kennedy	
Lawrenceburg	Dupont	Versailles
Aurora	Marble Corner	Rising Sun
East Enterprise	North Vernon	Madison
	Concord	

Zone 8

Zone Chairman	Rev. Angus Jeffers	
Y. P. Chairman	Paul Wright	
Terre Haute, Twelve Points		
Terre Haute, Hulman	Merom	Sullivan
Terre Haute, Greenwood St.		
Terre Haute, Beulah Mission		
Terre Haute, West	Shelburn	Sanford
Middletown	Seeleyville	Linton
Scott City	Coalmont	Jasonville

Zone 9

Zone Chairman	Rev. E. W. Hall	
Y. P. Chairman	Marguerite Miller	
Shoals	Elnora	Mitchell
Loogootee	English	Medora
French Lick	Epson	Orleans
Davis School House	Paoli	Burns City

Zone 10

Zone Chairman	Rev. E. I. Faidley	
Y. P. Chairman	Rev. J. M. Burcham	
Evansville, First	Wheatland	Twin Oaks
Evansville, Second	Oaktown	Washington
Vincennes	Somerville	Bicknell
Boonville		

REPORTS OF OFFICERS, BOARDS AND COMMITTEES

DISTRICT SUPERINTENDENT'S REPORT

To the Thirty-eighth Annual Assembly of the Indiana District of the Pilgrim Holiness Church convening at Frankfort, Indiana, August 18, 1941, I beg to submit the following report:

Another conference year is on record. We shall meet it at the judgment. Have we done our best?

This has been a good year. God has been with our churches and has blessed our ministers. I cannot remember a year when we have had so many pastors called back to their churches by a unanimous vote from both the official board and the church. For this we are glad. The nearer we get to God the more we will become of one accord.

HOME MISSIONS—We have organized two churches this year. They are at Paoli and Indianapolis. The church at Paoli was organized with seventeen members and now has twenty-two members. They are paying their pastor from twelve to fourteen dollars a week. The church in Indianapolis is located on Virginia Avenue and was organized with fifteen members.

We have paid the initial payment on churches at Kokomo, Sunshine Gardens, and Alexandria. The church at Kokomo is fully equipped with a full basement. We are having regular services and are praying that we will soon have an organized church here. The church at Sunshine Gardens, a suburb of Indianapolis, is a basement church. Our people at Alexandria are making needed repairs on their church and have moved in. Rev. Spears, who is responsible for the new work at Bedford, informs me that this church will be ready to organize soon after conference. Our church located on Prospect Street in Indianapolis could have been organized by now had we known in time that they were ready to organize. We also have a work started at Summitville and Scottsburg.

CHURCHES DEDICATED—This year we have had the privilege of dedicating six churches. They are Andrews, Windfall, Frankfort First, Somerville, Jonesboro, and Shelbyville. The people at Andrews have purchased a building that is adequate for both church and parsonage. They have remodeled and have a splendid building. At Windfall, we have a beautiful building that could be arranged to accommodate the pastor and his family. The Frankfort First Church has purchased the tabernacle and parsonage formerly belonging to Rev. A. M. Ewing. This is a splendid tabernacle and parsonage. We are happy to inform you that they are twenty-four months ahead on their payments. Somerville has built a nice tile church. Shelbyville has built a splendid edifice with a full basement.

Middletown has built a new church and Winchester has purchased a splendid church and has placed it over a full basement. New Albany is in the process of building a church of concrete block and tile construction with a full basement.

LOCAL INDEBTEDNESS—The Lord has blessed all of our churches financially. Indianapolis First and Anderson First Church have paid off their entire indebtedness this year. Rushville liquidated the debt on their church. Evansville Forest Hill paid off the debt on their church and have purchased and paid for a lot next to the church. Frankton liquidated their debt this year. Bicknell, French Lick, and Frankfort Second churches liquidated the debt on their churches this year. Muncie paid the debt on their church and lots.

FRANKFORT PILGRIM COLLEGE—The school has moved along nicely this year under the efficient guidance of Rev. C. G. Taylor, President. We have with the help of God operated free of debt. We do appreciate the splendid response to our call for canned goods. Six thousand cans have been filled for the school and home.

OLD PEOPLE'S HOME—We have indeed been fortunate in that the home is entirely free of debt this year. God is providing for the home in a wonderful way. We appreciate your loyalty to this interest. May God bless you abundantly.

OLD PEOPLE'S HOME FARM—We have no complaints to make about the farm. God is helping us and the report of the farm will show money on the right side of the ledger. The \$1800.00 indebtedness on thirty acres of land purchased for the farm last year has been reduced to \$500.00.

CAMPGROUNDS—You will notice that there has been considerable improvement made on the campgrounds. The State Board of Health inspected our campgrounds and school buildings and recommended these improvements. It will be necessary to continue improving our camp. With all the accommodations we have made for sleeping our campers, we need more room.

Manholes have been placed every ninety feet in our sewer system. The rooms in the boys' and girls' dormitories have been given two coats of paint. The restrooms in the administration building have been completely remodeled. The dormitory roofs have been coated with asphalt. Screens have been made for the administration building, boys' and girls' dormitories, chapel, and the new tile dormitory. A new floor has been placed in the Sherman Hotel.

We have appreciated the privilege of laboring among you. God has been with us as a District and we are happy in Him. We have made 271 visits and have preached 304 times. We have witnessed a number of souls finding God and being sanctified. We have held council meetings, school board meetings, and have attended zone meetings. We have traveled approximately 30,000 miles and our salary and traveling expenses have been paid in full.

Faithfully submitted,

(Signed) Area Montgomery.

ASSISTANT DISTRICT SUPERINTENDENT'S REPORT

I beg to submit a report of my labors as Assistant District Superintendent, for the year 1940-1941.

Visits made, 50; on business, 13; times preached, 37; churches organized, 1; miles traveled, 3,184; salary, \$184.00; expenses, \$63.68.

My salary and expenses have been paid in full.

Faithfully submitted,

(Signed) George Huff.

REPORT OF AUDITING COMMITTEE

We, the Auditing Committee, have examined the books of the District Treasurer, Frankfort Pilgrim College, and the Camp Meeting Treasurer, and believe them to be correct.

(Signed) Dennis H. Barber,

E. E. Crowder,

Pearl Dean,

Gertrude Leslie.

REPORT OF DISTRICT TREASURER FOR YEAR ENDING

JULY 31, 1941

Receipts

Balance on hand August 1st, 1940	\$ 2,269.88
----------------------------------------	-------------

District Funds:

Budget	\$5,499.36
Assembly offerings	53.57
Dining Room	18.25
Lunch Stand	11.23
Miscellaneous	16.00
Home Missions	300.00

Total	\$ 5,898.41
-------------	-------------

Old People's Home:	
Budget	733.23
Specified	2,534.54
Total	3,267.77
Home Missions:	
Budget	916.56
Specified	1,252.23
Total	2,168.79
District Indebtedness:	
Budget	916.57
Specified	14.00
Farmer's Bank (Loan)	1,534.35
Camp Treasurer	276.89
Total	2,741.81
Frankfort Pilgrim College:	
Budget	458.27
Specified	1,325.83
Total	1,784.10
Old People's Home Farm	2,743.43
1942 General Assembly	458.27
Miscellaneous	8.60
Camp Meeting Treasurer	298.87
General Budget	2,984.40
Foreign Missions	10,363.49
Rescue Home	696.17
Money Transfer	366.75
Minutes	310.84
Burial Association	183.33
Ministerial Papers	21.50
Total	34,296.53
Grand Total	\$36,566.41

Disbursements

District Funds:	
Assembly Stenographer	\$ 15.00
Supplies for Lunch Stand and Dining Room	73.92
Insurance	128.72
Paint	37.50
Typewriter	30.00
Malleable Steel Range	100.00
Old Light Bill	57.36
Material, Labor, etc., on Campground	349.55
Total	\$ 792.05
District Indebtedness:	
Payment on Old People's Home Farm	120.05
Balance on Pump	438.32
Abstract Expense	14.00
Shoemaker Note and Interest	1,040.00
Chattel Mortgage and Interest	1,546.94
Lumber for Camp Dormitory	751.52
Total	3,910.83
Home Missions:	
Zone No. 1	22.10
Zone No. 8	13.00

Rodney	84.11	
Alexandria	334.00	
Dupont	35.00	
Summitville	113.15	
Windfall	50.00	
Patriot	6.35	
Church Seats	40.00	
Edinburg	95.00	
Traveling Expense	21.81	
Terre Haute (12 Points)	131.60	
Indianapolis, Third	62.50	
Near Sheridan	20.00	
Paoli	50.00	
New Albany	35.00	
Sunshine Gardens	75.00	
Booneville	300.00	
Frankfort, Second	79.05	
Kokomo, Second	431.00	
<hr/>		
Total	1,998.67	
Old People's Home Farm	1,824.60	
Old People's Home	2,538.39	
District Superintendent's Salary	2,100.00	
District Superintendent's Expense	550.96	
Assistant District Superintendent's Salary	172.00	
Assistant District Superintendent's Expense	58.98	
District Secretary's Salary	60.00	
District Treasurer's Salary	110.00	
District Statistician's Salary	30.00	
Miscellaneous Expense	454.44	
Camp Meeting Treasurer	1,081.30	
General Budget	2,887.60	
Foreign Missions	10,189.62	
Rescue Home	695.97	
Money Transfer	466.70	
Minutes	318.10	
District Superintendent's Cottage	20.94	
Frankfort Pilgrim College	1,677.65	
Burial Association	315.99	
Ministerial Papers	120.00	
<hr/>		
Total	32,374.79	
<hr/>		
Balance on hand August 1, 1941	\$ 4,191.62	
(Signed) E. V. Halt, District Treasurer.		

CAMP MEETING TREASURER'S REPORT

Receipts

Balance on hand August 1, 1940		\$ 25.91
Payment on Cottages	\$ 120.00	
Camp Meeting Dues	143.75	
Camp Meeting Expense	783.10	
Home Missionary Offering	11.88	
Tabernacle Offerings	676.76	
Meat	16.70	
Meals	81.33	
Lunch Stand	191.00	
Song Books	75.45	
Electricity	12.90	
Rooms	613.88	

Worker's Tickets	47.80	
Food Commodities	15.25	
State Indebtedness	12.00	
Miscellaneous	7.50	
Total Receipts		2,809.30
Grand Total		\$2,835.21

Disbursements		
Food Commodities	\$ 344.32	
Camp Equipment	141.02	
Building Material	783.28	
Hardware	113.04	
Water Works Co.	15.00	
City Light & Power Co.	57.41	
Public Service Co.	6.43	
Telephone	18.84	
Bakery	25.29	
Meat	290.12	
Coal and Ice	52.30	
Electrical Supplies	50.00	
Labor on Grounds	74.49	
Drilling of Well	317.44	
Home Missions	11.88	
Printing	22.75	
Camp Cooks	60.00	
Traveling Expenses	29.82	
Evangelists	314.50	
Miscellaneous	23.77	
Total Disbursements		\$2,751.76

Balance on hand August 1, 1941 \$ 83.45
(Signed) **Angus R. Jeffers**, Camp Meeting Treasurer.

FINANCIAL REPORT FRANKFORT PILGRIM HOLINESS COLLEGE

1940-1941

Receipts

On hand, August 4, 1940	\$ 51.14	
Students	3,572.88	
Donations	30.49	
District Treasurer	465.23	
Labor	85.95	
Books	316.69	
Electricity and other sources	92.70	
Total Receipts		\$4,615.08

Disbursements		
Provisions	\$ 822.48	
Hardware and Lumber	242.28	
Teaching	1,130.00	
Fuel and Electricity	887.09	
Piano	10.00	
Paint and Plumbing	399.67	
Books	277.58	
Printing, Phone. Dup. Stamps	254.83	
Bad Checks—Refunds	122.90	
Labor	114.88	
Rock Wool	44.95	
Piano Tuning and Dishes	9.30	
Typewriter and Supplies	37.85	

Washing Machine	30.00
Chairs and Desks	95.00
Checks—Traveling	27.30
Miscellaneous	6.29
Total Disbursements	<u>\$4,512.40</u>
Balance on hand August 1, 1941	\$ 102.68

REPORT OF THE BOARD OF EDUCATION

We, the Educational Board, have conscientiously tried to perform our duties under the Manual, giving every consideration we felt we could under God to those coming before us.

We have examined 133 candidates.

We desire to emphasize the content and meaning of section 142, Paragraph 1 of the Manual which reads as follows:

"All licensed ministers failing to complete and report on at least two subjects a year in their required Course of Study, for two consecutive years, will automatically forfeit their license, unless in the judgment of the Educational Board an exception shall be made."

We as a Board believe this section should only be invoked and used in extreme cases and under very exceptional conditions.

In Christian love we submit this report.

(Signed) Educational Board.

Study Course for the Year 1941-1942

(Students are requested to write to the following persons in charge of the subjects in which they are interested):

First Year

1. Bible (Pentateuch and Historical Books) with Sell's "Bible Study by Books." (Pages 1-72.)
2. Lessons in English Composition, by Center and Holmes.
Rev. Harry Shepherd, Frankfort, Ind.
3. Guide to the Study of the Old Testament, by Huffman.
4. Bible Doctrines.—Smith.
5. Manual of Pilgrim Holiness Church.
Rev. Mrs. Imogene McFarlin, Gen. Delivery, West Terre Haute, Ind.

(To Be Read):

1. Plain Account of Christian Perfection Smith
2. Psychology for Bible Teachers Annet
3. Outline of Missionary History Mason or other Standard Text
4. Preacher and Prayer Bounds
5. Impressions Knapp
6. Pilgrim Holiness Advocate.

Second Year

1. Bible (Poetical and Prophetical Books) with Sell's "Bible Study by Books." (Pages 72-159.)
2. Effective English Expression.—Webster.
Mrs. Ruth Storey, 1112 S. Hackley St., Muncie, Ind.
3. Manual of Biblical History.—Blaikie.
4. Homiletics and Pastoral Theology.—Hogue. (Part 1.)
Rev. C. G. Taylor, 655 Freeman St., Frankfort, Ind.
5. Elements of Divinity, (Part 1, omitting section on page 504 and chapter 41.)
Rev. Alice Hart, 702 Conwell St., Aurora, Ind.

(To Be Read):

1. Perfect Love Wood
2. Life of Christ Stalker
3. The Preacher, His Life and Work Jowett
4. Bible History of World Government Smith

- 5.
6. Pilgrim Holiness Advocate.

Third Year

1. Bible (New Testament) with Sell's "Bible Study by Books." (Pages 160-273.)
2. Practical Lessons in Parliamentary Procedure.—Plummer.
3. Homiletics and Pastoral Theology.—Hogue. (Part 2.)
Rev. Lester Henry, 301 Frank St., Mitchell, Ind.
4. All About the Bible.—Collet.
5. Elements of Divinity.—Ralston. (Part 2.)
Rev. Alice Hart, 702 Conwell St., Aurora, Ind.

(To Be Read):

1. Church History Zenos
2. God's Eagles Watson
3. Typology (Christ in all the Scriptures).
- 4.
5. The Sunday School in Action Benson
6. Pilgrim Holiness Advocate.
Local Preacher's Course.
Rev. Mrs. Imogene McFarlin, Gen. Delivery, West Terre Haute, Ind.

NOTICE

All ministers who have not been ordained shall appear first each year before the Educational Board, bringing recommendations from local church, whether notified or not, at each annual Assembly.

The Examining Board is the second board before whom all licensed ministers must appear, and not the first.

All ministers appearing before the Educational Board shall bring their recommendations with them.

All students taking the Study Course shall neither use nor refer to any helps of any nature on any line when taking their examinations.

Examinations should be taken before a preacher or competent person.

REPORT OF THE WAYS AND MEANS COMMITTEE FOR 1941 CHURCH FINANCIAL

1

We recommend that each church of the District send in an offering of at least \$3.00 for the expense and entertainment of the pastors during camp.

2

We recommend that each church help support the Frankfort Bible School by sending to the District Treasurer each month an amount equal to 1% of the gross receipts of the local church treasury for the current month.

3

We recommend that each church raise three cents per member each month for District Home Missionary work and church extension, money to be paid to the District Treasurer.

4

We recommend that all money raised by representatives of General Home and Foreign Missionary interests be applied according to the Manual as provided in paragraph 12, section 127.

5

We recommend that the District Budget consist of 10% of all money raised by the local church, Sunday School and Young People's Societies, except that raised for missions, general budget, building funds, and all funds raised for specified District interests. Building fund purposes shall be interpreted to include rent on parsonages and churches and money paid on contracts of the same.

We recommend that each church raise the equivalent of four cents for each of its members per month for the Old People's Home and send this money to the District Treasurer the first of each month.
(Note: See also recommendation number 29 under District Financial in 1941 Minutes.)

CHURCH GOVERNMENT

7

Inasmuch as it is sometimes impossible for the local church to send district funds to the District Treasurer by July 31, we recommend that the District Treasurer hold his books open until August 10.

8

We recommend that each church provide a parsonage with telephone.

9

We recommend that the annual business of the local church be closed on July 31 of each year, but that pastors shall continue in service until and including the Sunday after the District Assembly, the local church to report the extra time in the next year.

10

We recommend that where parsonages are not equipped with heating device that provisions be made for same by local church.

11

We recommend that where churches are located in cities, that the location of the church appear in our Minutes.

12

We recommend that the deacons or deaconesses arrange for a monthly donation for pastor, such donation to be announced publicly.

13

We recommend that no pastor or local church board shall sell any real estate belonging to local church without the consent of the District Superintendent.

14

We recommend that each church give to the Old People's Home a donation of groceries, canned fruit and vegetables, the same to be credited as a gift by the church.

PASTORAL

15

We recommend each pastor take a two-weeks' vacation with salary.

16

Whereas, each year there is a difficulty in securing the correct ministerial list, we recommend that each pastor bring to Assembly a list of names of all unstationed ministers that are members of his church, respectively, with correct addresses.

17

We recommend that no pastor call an evangelist outside of our church without the approval of the District Superintendent.

REPORTS

18

We recommend that each preacher fill out two copies of each quarterly report and send one copy to the District Superintendent and one to the District Statistician.

19

We recommend that the District Statistician be empowered to return reports which are inaccurate for correction, corrected reports to be returned within ten days. We further recommend that mailing expense be met by the District.

20

We recommend that all pastors, evangelists and unstationed ministers failing to send in their reports to the District Statistician by the tenth of the month following the end of the conference year be denied a seat within the conference bar for that year.

21

We recommend that in the Summarized Report Blanks for the Minutes space be provided for our pastors to report the number of books together with the number of pages read during the year.

DISTRICT FINANCIAL

22

We recommend that the regular Assembly stenographer be paid \$15 and her entertainment during the Assembly.

23

We recommend that our District Superintendent be paid a salary of \$2,100.00 and expenses.

24

We recommend that the District Secretary be paid \$50.00 for his services for the year of 1941-1942.

25

We recommend that the District Statistician be paid \$30.00 for his services.

26

We recommend that the District Treasurer be paid \$110.00 for his services.

27

We recommend that the standard mileage rate which has been set by the District Council apply to all District Officials and those called for committee work and for work on the Campground.

28

Whereas our District has grown to such large proportions that it is impossible for any one man to look after its interests adequately, we recommend that we elect a full time Assistant District Superintendent whose salary shall be \$1800.00 a year.

29

We recommend that where a church can pay its pastor \$7.00 or more per week that the District pay an additional amount necessary to make the pastor's salary \$10.00 per week, provided that such pastor shall not engage regularly in secular employment and shall devote his entire time to his church.

We further recommend that all licensed and ordained ministers receiving from any and all sources, a salary of \$18.00 per week or more contribute not less than fifty cents per month to the District Treasurer to apply on above said ministerial support.

We further recommend that each church shall be required to meet its District and General obligations.

We further recommend that said ministerial support be mailed monthly to pastors by the District Treasurer and that said ministerial assessment shall be sent in to the District Treasurer monthly by said assessed pastors.

30

We recommend that the District Budget be pro-rated as follows: District funds, 70%; Old People's Home, 5%; Frankfort Bible School, 5%; District Indebtedness, 10% Burial Association, 5%; Home Missions, 5%.

YOUNG PEOPLE'S WORK

31

We recommend that each Young People's Society be requested to send an offering for the Young People's Rally to the District Young

People's Treasurer; also that churches without organized societies be invited to send an offering for the same.

32

We recommend that in order to finance the work of the District Young People's organization during the year each society send in an amount equal to two cents per member each month. This amount to be sent regularly to the Young People's District Treasurer.

33

We recommend that the District Young People's Convention be held the first two days of Camp Meeting (Friday and Saturday) and that the convention be under the direction of a committee composed of the Young People's Executive Secretary, the Young People's District Treasurer, and the Young People's Zone Chairmen.

This Committee shall arrange for the program, speakers, and the time of the opening of the Convention.

ZONE WORK

34

Inasmuch as Sunday school work is greatly neglected in many places, we recommend that each zone have a Sunday School Convention every six months. We further recommend that a Sunday school leader be appointed for each zone by the District Superintendent and respective zone presidents.

35

Inasmuch as the Zone meetings have been beneficial in advancing the spiritual, educational, and doctrinal interests of the District, we recommend they be continued.

We further recommend the zone chairman be elected by the preachers and lay delegates.

36

We recommend that the matter of whether young people's zone rallies be held jointly with or separately from the church zone rallies be left to the discretion of each zone, and that this matter be decided at a joint group meeting of the zone.

EDUCATIONAL AND EXAMINING BOARDS

37

We recommend that all persons taking the preacher's study course shall have their examinations in the hands of their instructors by July 16 of each conference year.

We recommend that at each annual Camp Meeting, on the last Thursday, Friday and Saturday, there shall be one daily session of the Educational and Examining Boards for the purpose of the examination of ministers. All ministers knowing themselves due to appear before these boards are urged to be present.

We further recommend that the time of such sessions shall be announced from the platform.

38

We recommend that those pursuing the study courses send for their home study questions early in the year, forwarding a large stamped envelope with each request to cover cost of mailing questions, etc.

39

We recommend that we have two Examining Boards of three members each. Each board is to work independently of the other; the work of these boards to be equally divided. Matters necessitating counsel may be brought before a joint session of the boards.

40

Whereas the present recommendation blanks for preachers provide for the placing of several names on the blanks, and whereas this has been a source of confusion to both the Educational and Examining Boards; we recommend that an individual blank be provided each

preacher recommended and this recommendation be carried by him to the Educational and Examining Boards.

We further recommend that these boards in joint session formulate a suitable recommendation blank.

41

We recommend that the District furnish the Educational Board such copies of sets of questions as may be needed this year.

(Note: See note at close of the Report of the Educational Board.)

CAMP MEETING AND ASSEMBLY

42

We recommend that all those desiring to pay for their board by serving as a worker during the Camp Meeting be required to pay a registration fee of \$1.00 when accepted as a worker by the Camp Meeting Committee.

43

We recommend that the ordained, licensed and honorary ministers of the Pilgrim Holiness Church, their wives and dependent children, and also ordained ministers and their wives of other churches be given meals during Camp Meeting.

44

We recommend that needed repair be made to our Tabernacle and buildings, and that no new buildings or changes be made upon our State Campgrounds unless authorized by this Assembly or two-thirds majority vote of the District Council and the Camp Meeting Board.

45

We recommend that no delegate to the District Assembly be given free entertainment during Camp Meeting.

46

We recommend that our District Camp Meeting begin on the second Friday of August each year.

47

We recommend that the heads of departments of the Camp Meeting Board and Stand Manager be authorized to make purchases for their respective departments. We further recommend that all bills for said purchases be placed in the Camp Meeting Treasurer's hands before the close of the Camp Meeting.

48

We recommend that all who rent rooms during Camp be advised to bring their own bedding.

49

We recommend that the Camp Meeting Board employ a caretaker for the Campgrounds and buildings; said caretaker to be paid a salary of \$520.00 a year plus board and room for himself and family.

We further recommend his cash salary be paid by the Camp Meeting Treasurer and that board and room be provided by the School Board.

We further recommend that said caretaker's duties be outlined by the Camp Meeting Board and that he be amenable to the District Superintendent.

50

We recommend that in case the Assembly considers changing or increasing the amounts in financial recommendations by the Ways and Means Committee that the Ways and Means Committee may appeal to the Assembly for a committee to investigate the financial balance of the treasury before voting on the change, this investigating committee to consist of one member from the District Council, one member from Ways and Means Committee, and one member chosen from the Assembly.

51

We recommend that only ministers, their wives and unmarried dependent children and lay delegates be given entertainment during Assembly. All entitled to this entertainment shall be duly registered and given cards of recognition. For all other entertainment the same rate shall prevail as during Camp Meeting.

52

We recommend that the Nominating Committee present seven names to this Assembly, from which five shall be elected as Board of Directors for Frankfort Bible School.

53

We recommend that all future buildings constructed for dormitory and Assembly purposes be made to conform to the state code governing the same.

54

We recommend that the District Council appoint the ministerial and lay delegates to the General Assembly and that said appointments be ratified by this Assembly.

55

We recommend that there be a Publishing Committee composed of the District Secretary and two appointee members. It shall be the duty of this committee to publish the Assembly Minutes.

MISCELLANEOUS

56

We recommend that the office of Superintendent of the Old People's Home and farms be under the administration of the District Council.

57

We recommend that immediately following the District Assembly the Secretary mail to each pastor an itemized postal notice of the financial requirements of the church for the year.

58

We recommend that the Ways and Means Committee meet at the call of the chairman prior to the next District Assembly. Their expenses and entertainment to be paid by the District Treasurer.

59

We recommend that 1,000 copies of the Assembly Minutes be published within thirty days after the Assembly adjourns, and that all orders for same be sent directly to the District Secretary.

60

We recommend that the District Council be given the privilege of forming small churches into circuits.

61

We recommend that the District School be known as Frankfort Pilgrim Bible School.

62

We recommend that the following recommendations of the 1940 Minutes be dropped from the Minutes of 1941: numbers 9, 11, 16, 20, 47, and 54.

REPORT OF THE RESOLUTIONS' COMMITTEE

1

Remembering the untimely closing of the 1940 camp which seemed such a tragedy, yet bowing in submission to God's will and realizing that "All things work together for good to them that love God," our hearts have been made glad by the faithfulness of our evangelists, Rev. P. F. Elliott and Rev. L. L. Waddell, our song evangelist, Rev. C. D. Jester, our children's worker, Miss Georgia Toney, the platform workers, the groans of the saints, the tears of penitent sinners, the shouts of

newborn babes, the mighty outpouring of the spirit on believers, and the healing of the sick, in the gracious camp which God has given us this year. Therefore, be it resolved that we express our appreciation to God by standing and singing a verse of "All Hail the Power of Jesus' Name."

2

Whereas, we are again blessed and favored by the presence of our General Superintendent, Rev. W. L. Surbrook, who seems to be much improved in health this year; therefore, be it resolved that we show our appreciation to him and our gratitude to God by saying a warm "God bless you."

3

Whereas, our District Superintendent, Rev. Area Montgomery, has so loyally labored with us another year; therefore, be it resolved we show our appreciation by saying a cheery "Amen!"

4

Whereas, God has been with and prospered our Shoemaker Memorial Home and has protected every member from the hand of death; therefore, be it resolved, that we show our gratitude to God and our appreciation to the faithful Superintendent and workers of the Home by standing and singing the "Doxology" and praying for God's continued blessings on our Old People's Home.

5

Whereas, God has kept our fair nation from the horrible ravages of Pilgrim College, which has been not only growing and operating free of debt, but has prospects for a greater year this year; therefore, be it resolved that we show our appreciation to the sacrificing faculty, and president by pledging our loyalty and prayers, and urging our pastors to arrange for school meetings in their churches.

6

Whereas, God has kept our fair nation from the horrible ravages of this war; therefore, be it resolved that we show our gratitude to God by rising and singing the last verse of "My Country, 'Tis of Thee."

Our Father's God to Thee
Author of liberty
To Thee we sing
Long may our land be bright
With freedom's holy light
Protect us by Thy might
Great God our king.

7

Whereas, the dark clouds of war and tribulation are constantly advancing upon us and already hundreds of our young men have been taken from our homes and churches; therefore, be it resolved that we implore the Lord to anoint us afresh, and renew our vision that we may go back to our fields of labor to redouble our efforts in snatching souls as brands from the burning.

8

Whereas, God has blessed our nation with a period of prosperity in which many of our people have shared; therefore, be it resolved that we show our appreciation to God by doing our best to free ourselves from the bondage of debt, and urge all our people to do likewise, lest we be a reproach to the cause of Christ and miss the Rapture.

9

Since God has seen fit to call home two of our precious ministers, Rev. W. C. Stone, who for many years was the editor of the Pilgrim Holiness Advocate, and Rev. Kate Glispy; therefore, be it resolved that we hold a memorial service at the devotional hour on Tuesday morning.

10

Whereas, the State Board of Health and the State Fire Marshal have made requirements for improvements on our school and camp

buildings for the safety and health of our people, which have been profitable to us; therefore, be it resolved that we show our appreciation for these improvements to the state officials and our district workers by a rising vote of thanks and that our Secretary be instructed to send a copy of this resolution to the respective state officials.

(Signed) **Bertha Schoeff,**
Eula Kennedy,
Beulah J. Arnett.

REPORT OF EXAMINING BOARD

Ministerial Directory—Ordained Ministers

Adams, W. S.	Seeleyville, Ind.
Andrews, Flo	Osgood, Ind.
Arnett, Beulah	Shoals, Ind.
Arnett, Lindley	Shoals, Ind.
Baldwin, Vern	R. R. 1, Lynn, Ind.
Bates, Fred	Allison, Iowa
Barber, Dennis	Box 36, Jonesboro, Ind.
Barnes, Edna	1402 S. 19th St., New Castle, Ind.
Barnes, Omer	1402 S. 19th St., New Castle, Ind.
Baughman, Retta	2419 Lincoln St., Anderson, Ind.
Benjamin, Ralph	So. Columbia St., Frankfort, Ind.
Bogue, W. G.	R. R., Frankfort, Ind.
Bowman, Lula	Thorntown, Ind.
Bradley, Elsie	2332 Lake Shore Drive, Sheboygan, Wis.
Bradley, W. E.	2332 Lake Shore Drive, Sheboygan, Wis.
Bradfield, Bonnie B.	R. R., Petersburg, Ind.
Bryan, Joseph C.	1004 Lincoln Ave., Connersville, Ind.
Brown, Frank	Tabor, Iowa
Camp, Virgil	830 Jackson St., Huntington, Ind.
Canary, Ivan	New Albany, Ind.
Carlson, Florence	1625 N. Delaware St., Indianapolis, Ind.
Carter, Hascue	North Vernon, Indiana
Cheneworth, Laura	916 S. Home, Ave., Kokomo, Ind.
Clark, Leota	Colfax, Ind.
Clark, W. E.	Colfax, Ind.
Clem, E. J.	507 Hinman St., East Columbus, Ind.
Clevenger, Fred	Simms, Ind.
Clevenger, Naomi	Simms, Ind.
Clevenger, Samuel	1033 Eastern Ave., Connersville, Ind.
Cole, Lonnie	Michigantown, Ind.
Cole, Maurice	327 W. Pennsylvania, Shelbyville, Ind.
Coleman, Myrtle	Coalmont, Ind.
Cotton, J. W.	Centerville, Ind.
Crowder, E. E.	22 Vine St., Greenfield, Ind.
Croy, J. W.	518 S. Barclay St., Fairmount Ind.
Crute, L. T.	Dupont, Ind.
Daugherty, Walter	383 W. Jackson St., Orleans, Ind.
Dean, Pearl	R. R. 2, Shelburn, Ind.
Dean, W. S.	R. R. 2, Shelburn, Ind.
Dillon, Viola	R. R. 5, Frankfort, Ind.
Dorby, Emery	R. R. 2, La Fontaine, Ind.
Donovan, Jack	1259 S. First St., Frankfort, Ind.
Dotson, Herbert	434 Union St., Delphi, Ind.
Douglas, James	Monon, Ind.
Dunkelberger, Hattie	R. R. 2, Box 179, Terre Haute, Ind.
Dunn, F. B.	450 Douglas St., Tipton, Ind.
Dunn, F. E.	Madison, Ind.
Dunn, William T.	R. R. 9, Rushville, Ind.
Faidley, E. I.	301 Murlin St., Bicknell, Ind.
Faidley, Verna	301 Murlin St., Bicknell, Ind.
Fletcher, Leonard	Beech Grove, Ind.

Franklin, Ida	2614 E. Eighth St., Elwood, Ind.
Frye, W. A.	1534 Fulton Ave., Evansville, Ind.
Frye, Mrs. W. A.	1534 Fulton Ave., Evansville, Ind.
Fugett, W. R.	New Castle, Ind.
Gatecliff, Mrs. George	315 W. Emerson, Princeton, Ind.
Gasaway, Bessie	307 Lafayette St., South Bend, Ind.
Gick, Carrie	E. 717 Roman Ave., Spokane, Wash.
Goins, Christina	R. R. 5, Elwood, Ind.
Goins, Floyd	509 W. South St., Frankfort, Ind.
Goins, Howard	1106 E. Monroe St., Kokomo, Ind.
Goins, Lee	R. R. 5, Elwood, Ind.
Good, Mary	S. Fifth St., Frankfort, Ind.
Groshart, G. W.	R. R. 5, Frankfort, Ind.
Grossman, Mrs. E. W.	R. R. 1, Howell, Ind.
Grossman, E. W.	R. R. 1, Howell, Ind.
Guyer, P. D.	455 W. Armstrong, Frankfort, Ind.
Hall, E. W.	417 Indiana Ave., French Lick, Ind.
Hall, Mrs. E. W.	417 Indiana Ave., French Lick, Ind.
Halt, E. V.	1609 N. Delaware St., Indianapolis, Ind.
Hamer, Helen	2430 Chase St., Anderson, Ind.
Hamilton, Clarence	621 W. Hendricks St., Greensburg, Ind.
Hamilton, Ruth Bake	1810 Young St., Cincinnati, Ohio
Hankins, Mrs. Raymond	2115 Brookside Ave., Indianapolis, Ind.
Hart, Alice	702 Conwell, Aurora, Ind.
Hayhurst, Aaron	2518 E. Thirtieth St., Indianapolis, Ind.
Hayhurst Jesse	2518 Jefferson St., Terre Haute, Ind.
Heard, Harold	319 Cottage Ave., Anderson, Ind.
Henry, Lester	301 Frank St., Mitchell, Ind.
Hertle, James	Lebanon, Ind.
Hinds, Frank	Elwood, Ind.
Hines, Anna	427 W. Twenty-second St., Anderson, Ind.
Holcomb, Albert	Franklin, Ind.
Hotle, Della	1836½ Gent St., Indianapolis, Ind.
Hotle, Frank	1836½ Gent St., Indianapolis, Ind.
Huff, Geo.	1442 Cruft, Indianapolis, Ind.
Hughes, C. A.	R. R., Jonesboro, Ind.
Hunt, Margaret	R. R. 5, Frankfort, Ind.
Husseton, Parker	Forest, Ind.
Inman, Katherine	R. R. 2, Box 179, Terre Haute, Ind.
Jacobs, Pearly	R. R., Trafalgar, Ind.
Jeffers, Angus	2004 Hulman St., Terre Haute, Ind.
Jeffers, Lela	2004 Hulman St., Terre Haute, Ind.
Jester, C. D.	1118 Ridge St., Richmond, Ind.
Jewell, Garnet	East Columbus, Ind.
Johnson, Fred	Anderson, Ind.
Jones, E. C.	Petersburg, Ind.
Keeney, Walter	Oaktown, Ind.
Kennedy, John	15 Tate St., Lawrenceburg, Ind.
Kennedy, Eula	15 Tate St., Lawrenceburg, Ind.
Ketchum, W. E.	929 W. Sheridan St., Greensburg, Ind.
Kerby, James E.	R. R., Fulton, Ind.
King, Freeda	Marble Corner, Ind.
King, Irvin	Marble Corner, Ind.
Klopfenstein, Clarence	Hartsville, Ind.
Klopfenstein, Ruth	Huntington, Ind.
Knowles, Willard	155 S. Third St., Lafayette, Ind.
Leonard, Vern	500 N. East St., Winchester, Ind.
Locke, Katie	Milton, Ind.
Lockman, Augusta	Marion, Ind.
Marley, Albert	Ind.
Marley, Lillian	Ind.
Mayhew, Lester	Shoals, Ind.

McCrory, Grace	College Corner, Ohio
McCrory, James	College Corner, Ohio
McCrory, Ralph	533 N. Jefferson St., Indianapolis, Ind.
McCrory, Wilbert	216 S. 16th St., Lafayette, Ind.
McFarlin, Imogene	Gen. Delivery, West Terre Haute, Ind.
McFarlin, William	Gen. Delivery, West Terre Haute, Ind.
McHenry, Chas.	804 So. Clark St., Lebanon, Ind.
McQueen, Arthur	Westport, Ind.
Mendenhall, Alta	R. R. 1, Bogstown, Ind.
Middleton, G. C.	R. R. 5, Frankfort, Ind.
Mitchell, L. R.	Upland, Ind.
Montgomery, Area	2915 Station St., Indianapolis, Ind.
Montgomery, Loyd	400 S. 3rd St., Frankfort, Ind.
Moore, Lillie	65 West Canal, Wabash, Ind.
Moore, Samuel	65 West Canal, Wabash, Ind.
Morrison, Clarence	1119 S. Bell St., Kokomo, Ind.
Newton, Elsie	1124 7th Ave., Terre Haute, Ind.
Newton, Glenn	1124 7th Ave., Terre Haute, Ind.
Murphey, Edna	35 Alton Ave., Indianapolis, Ind.
Nibarger, Ralph	2727 Claremont St., Evansville, Ind.
Noel, Gilbert	1111 E. Indiana, South Bend, Ind.
Parr, Ruby	Odon, Ind.
Phares, George V.	734 Fair Ave., Shelbyville, Ind.
Plunkett, Arthur	37 Wisconsin St., Indianapolis, Ind.
Plunkett, Sarah	37 Wisconsin St., Indianapolis, Ind.
Preusz, Thurman	2836 S. First St., Terre Haute, Ind.
Pursley, James	1312 Union, Lafayette, Ind.
Rand, Milburn	R. R. 1, Lawrenceburg, Ind.
Ragsdale, Frances	1609 N. Delaware, Indianapolis, Ind.
Ragsdale, Paul	1609 N. Delaware, Indianapolis, Ind.
Reed, Carl	1025 Pleasant Hill, Logansport, Ind.
Rees, Hazel	R. R. 1, Zelma, Ind.
Reprogle, Stewart	Wheatland, Ind.
Roark, Carl	Rising Sun, Ind.
-Roark, Ellen	2215 Jackson St., Anderson, Ind.
Robinson, Verlin	Box 285, Ladoga, Ind.
Royer, Daniel	Sullivan, Ind.
Runnels, Perry	New Carlisle, Ind.
Russell, M. H.	Kingswood, Ky.
Sailer, D. L.	2422 S. Jefferson St., Muncie, Ind.
Saunders, Lawrence	2213 S. Mulberry St., Muncie, Ind.
Schoeff, Bertha	222 E. Pennsylvania, Shelbyville, Ind.
Schoeff, Edward	222 E. Pennsylvania, Shelbyville, Ind.
Schwing, Adam	Ind.
Scott, Ada	Elwood, Ind.
Sewell, Lydia Harrington	585 N. Hill St., Pasadena, Calif.
Shelton, Mattie	R. R., Oaktown, Ind.
Shephard, Harry	Frankfort, Ind.
Shroyer, Wm. G.	1045 Harris St., Huntington, Ind.
Shumaker, Naomi	R. 2, Brazil, Ind.
Siberal, J. H.	2304 Langley Ave., Indianapolis, Ind.
Slusser, Charles	2970 S. 13th St., Terre Haute, Ind.
Smith, Plen	1232 S. Harding Ave., Terre Haute, Ind.
Smith, Ray	104 S. 23rd St., Elwood, Ind.
Snyder, Melvin	1211 S. Adams St., Marion, Ind.
Speck, Walter	4631 Caroline St., Indianapolis, Ind.
Storey, Mark	1112 S. Hackley St., Muncie, Ind.
Storey, R. K.	Missionary to Philippines
Street, Raymond	Medora, Ind.
Taylor, C. G.	655 W. Freeman St., Frankfort, Ind.
Thebold, R. T.	Shelbyville, Ind.
Thornburg, George F.	Fulton, Ind.

Toombs, Mary	1520 Noble St., Anderson, Ind.
Toombs, W. O.	1520 Noble St., Anderson, Ind.
Vance, D. E.	University Park, Ia.
Van Briggie, Vard	2504 Jackson St., Anderson, Ind.
Waddell, L. L.	2406 Delaware St., Anderson, Ind.
Wade, Lawrence	Alton Ave., Indianapolis, Ind.
Wade, V. E.	R. R. 3, Knox, Ind.
Walker, Pearl	Tyner, Ind.
White, Dudley	Spencer, Ind.
White, Esther	Milton, Ind.
White, Robert	R. R. 1, Fairbanks, Ind.
Williams Dale	1715 E. 67th St., Indianapolis, Ind.
Williams, John	Indianapolis, Ind.
Wilson, C. I.	R. R. 2, Vevay, Ind.
Wilson, Ermal	Missionary to Africa
Wilson, Madge	Missionary to Africa
Wise, Abraham	Westfield, Ind.
Wright, E. W.	1304 S. 21st St., Terre Haute, Ind.
Wright, Grant	Madison, Ind.
Youngman, Frank	R. R. 3, Columbus, Ind.
Zeits, Dale G.	758 S. Sixth St., Frankfort, Ind.

Third Year License

Carr, John Paul	2212 S. Adams St., Marion, Ind.
Corts, Harold	2304 Garfield Ave., Terre Haute, Ind.
Coy, John Allen	Florence, Ind.
Crowder, Lorene	R. R., Greenfield, Ind.
Driscoll, Frances	1207 Baldwin Ave., Anderson, Ind.
Earlywine, George	R. R., Trafalgar, Ind.
Etchison, Juanita	Lebanon, Ind.
Hamilton, Wilbur	309 E. Jackson St., Shelbyville, Ind.
Henderson, Stella	218 W. Ave., Waukesha, Wis.
Jackson, Clarence	Walkerton, Ind.
Kable, Jennie	Oaktown, Ind.
Poe, Edgar A.	710 Indiana Ave., Shelbyville, Ind.
Pottenger, J. W.	485 E. Hill St., Wabash, Ind.
Robbins, Marshall	New Carlisle, Ind.
Scarbaugh, Lillian	Terre Haute, Ind.
Smeltzley, Thelma	Huntington, Ind.
Smith, Edith	Holton, Ind.
Smith, Lester	Holton, Ind.
Whitlock, Arthur	Clinton, Ind.
Yundt, Moreland	R. R. 4, Paoli, Ind.

Second Year

Bateman, G. R.	English, Ind.
Billman, Edgar	R. 2, Winchester, Ind.
Briggs, O. J.	207 East Dewald St., Fort Wayne, Ind.
Brown, Pleasant	Canaan, Ind.
Burcham, J. M.	Boonville, Ind.
Call, Elton	2311 Main St., Elwood, Ind.
Cardier, John	2203 Leer St., South Bend, Ind.
Carpenter, Thomas	739 Ninth St., Linton, Ind.
Carrol, Ernest	Clarksburg, Ind.
Cheesman, Willis	1101 South St., Lafayette, Ind.
Clark, Charles O.	1159 S. Columbia, Frankfort, Ind.
Cooley, Lawrence	
Denny, Earl	102 Cotton St., New Albany, Ind.
Eakins, Frank	Elwood, Ind.
Gookins, Floyd	825 N. Lincoln, Greensburg, Ind.
Hamilton, Grace	621 W. Hendricks, Greensburg, Ind.
Hill, Wayne	849 Birch Ave., Indianapolis, Ind.

Hines, Roy	Chesterfield, Ind.
Hotle, Elvin	1839 Centennial St., Indianapolis, Ind.
Howe, Howard	1201 E. Illinois St., Evansville, Ind.
Jackson, E. L.	Osgood, Ind.
Jewell, Marvin	Morgantown, Ind.
Johnson, Stanley	1248 John St., Evansville, Ind.
Kizzie, Elmer	1624 Norman Ave., Indianapolis, Ind.
Knight, Paul	Morgantown, Ind.
Leab, Luna	Centerville, Ind.
May, Clarence	Hope, Ind.
McGinnis, Wilbur	1517 Rembrandt St., Indianapolis, Ind.
Morgan, Harold	Holton, Ind.
Morgan, Rose	Holton, Ind.
Pownell, Donald	2013 W. 9th St., Marion, Ind.
Porter, Frances	R. R., Loogootee, Ind.
Ribke, Mable	1284 Christian Ave., Noblesville, Ind.
Ribke, William,	1284 Christian Ave., Noblesville, Ind.
Rogers, Robert	Dupont, Ind.
Scudder, Howard	Elnora, Ind.
Shoemaker, Harold	1025 E. 5th St., Anderson, Ind.
Sloan, Andrew	Elnora, Ind.
Smith, Orval	Somerville, Ind.
Steger, Irene	Westport, Ind.
Tanksley, V. E.	1709 N. 13th St., Vincennes, Ind.
Tomey, Georgie	Elnora, Ind.
Wagoner, Roscoe	Burns City, Ind.
Wilkerson, Walter	824 Bates St., Indianapolis, Ind.
Whitaker, Jess R.	Mishawaka, Ind.

First Year

Ahleman, Alva	Somerville, Ind.
Addington, Robert	Muncie, Ind.
Baker, L. S.	1909 La Fountain St., Kokomo, Ind.
Bate, Lena	Greensburg, Ind.
Benjamin, Myrtle	1254 Oak St., Frankfort, Ind.
Boothe, Murray	West Terre Haute, Ind.
Brown, Lena	Lebanon, Ind.
Brown, Roy	627 Olivet St., Sullivan, Ind.
Burcham, Juanita	Boonville, Ind.
Burres, Ray	1100 Vantree St., Washington, Ind.
Clark, Floyd	R. R. 1, Monticello, Ind.
Connard, Clifford	Summitville, Ind.
Crecelius, William	
Cromer, Darwin	1011 Vine St., Logansport, Ind.
Davis, Harold	3102 Lancaster St., Indianapolis, Ind.
Fairy, George	Lebanon, Ind.
Fraze, Ronald	Andrews, Ind.
Funkhauser, Ross	924 S. Reddick St., Mishawaka, Ind.
Glenn, Joseph	Clarksburg, Ind.
Grummons, Norrine	665 Greenlawn Ave., Fort Wayne, Ind.
Grubbs, A. B.	Lynn, Ind.
Halt, Otto	R. R., Terre Haute, Ind.
Hamilton, Ralph	R. R. 2, Windfall, Ind.
Harding Madge	Elwood, Ind.
Hill, Roy	1609 Delaware St., Indianapolis, Ind.
Hobbs, Lillian Northup	Nashville, Ind.
Hughes, Virginia Young	1124 7th Ave., Terre Haute, Ind.
Hughes, Hershel	1020 S. Washington St., Owosso, Mich.
Hunter, Nannie	Lawrenceburg, Ind.
Kelley, Virgil	Linton, Ind.
King, Mack A.	821 W. 12th St., Marion, Ind.
Malone, Robert	2119 N. 26th St., Terre Haute, Ind.

Mason, Harold	Greensburg, Ind.
McNeeley, Paul	1810 Young St., Cincinnati, Ohio
Monroe, Harold	Vevay, Ind.
Moore, W. A.	English, Ind.
Moorman, Charles	2126 N. E. St., Elwood, Ind.
Mosier, John	Osgood, Ind.
Mowery, Guy	Bicknell, Ind.
Napier, Ralph	Trafalgar, Ind.
Newland, Chester C.	2962 N. Chester St., Indianapolis, Ind.
Penington, Ira	Centerville, Ind.
Porter, Homer	801 S. 10th St., W. Terre Haute, Ind.
Porter, Thomas	505 Lockport Road, Terre Haute, Ind.
Posey, Joseph	Lawrenceburg, Ind.
Ragsdale, Wilkes	Somerville, Ind.
Ramer, J. H.	946 Emerson Ave., South Bend, Ind.
Riden, Carl	Richmond, Ind.
Ruddick, Robert	1327 Cruft St., Indianapolis, Ind.
Salters, Ernest	R. R. 1, Box 618, Indianapolis, Ind.
Scantland, L. L.	1607 W. 19th St., Anderson, Ind.
Shipley, Lula	Muncie, Ind.
Skinner, Arthur	Box 55, Michigantown, Ind.
Smith, Edith	Holton, Ind.
Smith, Lester	Holton, Ind.
Snediker, Vera	Oxford, Ohio
Spencer, Oran W.	Scotts City, Ind.
Steger, Irene	Westport, Ind.
Stroud, Louis	R. R., Elwood, Ind.
Stunkle, Robert	Westport, Ind.
Summer, Ben	1121 S. Purdum St., Kokomo, Ind.
Taylor, Raymond	Lexington, Ind.
Thomas, Bessie	Jonesboro, Ind.
Thomas, Joseph T.	601 N. Indiana St., Delphi, Ind.
Weekly, E. R.	2208 California St., Columbus, Ind.
West, Ester	540 W. Monument St., Colorado Springs, Col.
Wilder, Harvey	Columbus, Ind.
Wilhoit, Josephine	527 W. Washington St., Greensburg, Ind.

Evangelists

Benjamin, Ralph	S. Columbia St., Frankfort, Ind.
Clevenger, Fred	Simms, Ind.
Corts, Harold	2304 Garfield Ave., Terre Haute, Ind.
Coy, John A.	Florence, Ind.
Dean, W. S.	R. R. 2, Shelburn, Ind.
Donovan, Jack	1259 S. First St., Frankfort, Ind.
Dunn, F. E.	Madison, Ind.
Dunkelberger, Hattie	R. R. 2, Box 179, Terre Haute, Ind.
Grossman, Mrs. E. W.	Howell, Ind.
Hertle, James	R. R. 1, Lebanon, Ind.
Hill, Roy	
Holcomb, Albert	Westport, Ind.
Jewell, Garnet	East Columbus, Ind.
McCrary, Wilbert	Lafayette, Ind.
McFarlin, Imogene Snyder	Gen. Delivery, West Terre Haute, Ind.
McFarlin, William	Gen. Delivery, West Terre Haute, Ind.
Montgomery Loyd	319 Cottage Ave., Anderson, Ind.
Scantland, L. L.	1607 W. 19th St., Anderson, Ind.
Shroyer, Wm. G.	1045 Harris St., Huntington, Ind.
Smith, Plenn	1232 S. Harding St., Terre Haute, Ind.
Stewart, David	407 N. Warman Ave., Indianapolis, Ind.
Van Briggles, Vard	2504 Jackson St., Anderson, Ind.

Wade, Lawrence 101 Alton Ave., Indianapolis, Ind.
 Zeits, Dale 758 S. 6th St., Frankfort, Ind.

Evangelistic Singers

Ashby, Geneva Anderson, Ind.
 Ashby, Kenneth Anderson, Ind.
 Bate, Lena Greensburg, Ind.
 Bate, Mary Greensburg, Ind.
 Canary, Imogene New Albany, Ind.
 Chitman, Dorothy Muncie, Ind.
 Garlitch, Ray Shelbyville, Ind.
 Hamilton, May Greensburg, Ind.
 Hamilton, Mildred Greensburg, Ind.
 Hamilton, Ruth Cincinnati, Ohio
 Myers, Edith Frankfort, Ind.
 Parr, Geraldine Fairbanks, Ind.
 Reed, Lillian Frankfort, Ind.
 Salvadore, Mr. and Mrs. Frank Evansville, Ind.
 Sappington, Ruth Fulk New Albany, Ind.
 Scarbrough, Lillian Terre Haute, Ind.
 Steger, Mary Irene Westport, Ind.
 Strader Pilgrim Trio Anderson, Ind.
 Wilkins, Fern Indianapolis, Ind.
 Wright, Mamie Frankfort, Ind.
 Zeits, Dessie Frankfort, Ind.
 Zeits, Edith Frankfort, Ind.

Deaconesses

Dressler, Lillian 442 W. Main St., Greensburg, Ind.
 Smith, Mary Albuquerque, New Mexico
 Titus, Clyde 207 S. First St., Evansville, Ind.

Licensed Deaconesses

Donovan, Rose 1259 S. First St., Frankfort, Ind.
 Hanner, Zetta
 Lewis, Mrs. Elizabeth Loogootee, Ind.
 Snyder, Elizabeth Greenwood, Ind.

Missionaries

Ragsdale, Paul W. Sailing to Philippine Islands
 Ragsdale, Frances Sailing to Philippine Islands
 Reynolds, Cora Care of God's Bible School, Cincinnati, Ohio
 Solter, Edith India
 Storey, R. K. Philippine Islands
 Wilson, Ermal Africa
 Wilson, Madge Africa

Coming from Other Churches or Districts

Howe, Howard Trinity Gospel Tabernacle Association
 Johnson, Stanley Trinity Gospel Tabernacle Association
 Smith, Mrs. Edith Methodist Church
 Sloan, Andrew Trinity Gospel Tabernacle Association
 Klopfenstein, Ruth Free Methodist Church
 Denny, Earl M. E. Church
 Grubbs, Ancil Friends Church
 Dillon, Viola Southern District

Names Transferred

Riggs, Charles
 Wire, Moses
 Speck, Dale Whittinghill, Hobart
 Whittinghill, Emma Zeits, J. B.

Names Dropped

Leslie Carmen

STATIONING COMMITTEE'S REPORT

Alexandria—Lawrence Saunders	2213 S. Mulberry St., Muncie, Ind.
Anderson, First—L. L. Waddell	2406 Delaware St., Anderson, Ind.
Anderson, Missionary—W. O. Toombs	1520 Noble St., Anderson, Ind.
Andrews—Gilbert Pegg	Andrews, Ind.
Aurora—Milburn Rand	R. R. 1, Lawrenceburg, Ind.
Bass Lake—Victor Wade	R. R. 3, Knox, Ind.
Beech Grove—Leonard Fletcher	Beech Grove, Ind.
Bicknell—E. I. Faidley	301 Murlin St., Bicknell, Ind.
Boonville—J. M. Burcham	Boonville, Ind.
Brown's Chapel—Ernest Crowder	R. R., Greenfield, Ind.
Burns City—Roscoe Wagoner	Burns City, Ind.
Centerville—J. W. Cotton	Centerville, Ind.
Chesterfield—Roy Hines	Box 274, Chesterfield, Ind.
Clarksburg—Ernest Carrol	Clarksburg, Ind.
Clarks Hill—Willard Knowles	155 S. Third St., Lafayette, Ind.
Coalmont—Myrtle Coleman	Coalmont, Ind.
College Corner—James and Grace McCrory	College Corner, O.
Concord—Irwin and Frieda King	R. R., Osgood, Ind.
Connersville—Joseph Bryan	1004 Lincoln Ave., Connersville, Ind.
Davis School House—Ernest Holt	Shoals, Ind.
Delphi—Joseph Thomas	601 N. Indiana, Delphi, Ind.
Dupont—L. T. Crute	R. R., Dupont, Ind.
East Columbus—E. J. Clem	507 Hinman St., E. Columbus, Ind.
East Enterprise—C. I. Wilson	R. R. 2, Vevay, Ind.
Edinburg—Abraham Wise	Edinburg, Ind.
Elwood—Ray Smith	104 S. 23rd., Elwood, Ind.
English—Robert Bateman	English, Ind.
Epson—Elnora—Howard Scudder	Elnora, Ind.
Evansville, First—W. A. Frye	1534 Fulton Ave., Evansville, Ind.
Evansville, Forest Hill—Ralph Nibarger	2727 Claremont St., Evansville, Ind.
Fairmount—J. W. Croy	518 S. Barclay, Fairmount, Ind.
Forest—Parker Hussleton	Forest, Ind.
Fort Wayne—O. J. Briggs	207 E. DeWald St., Fort Wayne, Ind.
Frankfort, First—Lloyd Montgomery	400 S. 3rd St., Frankfort, Ind.
Frankfort, Second—Owen Clark	1159 S. Columbia St., Frankfort, Ind.
Frankton—Elton Call	2311 Main St., Elwood, Ind.
French Lick—E. W. Hall	417 Indiana Ave., French Lick, Ind.
Fulton—Elmer Kerby	Fulton, Ind.
Greensburg—Clarence Hamilton	621 W. Hendricks St., Greensburg, Ind.
Greenwood—Wilbur McGinnis	1517 Rembrandt St., Indianapolis, Ind.
Hartsville—Clarence Klopfenstein	Hartsville, Ind.
Harvey Flats—Lester and Edith Smith	Holton, Ind.
Hope—Clarence May	Hope, Ind.
Howard Chapel—Ralph Hamilton	R. R. 2, Windfall, Ind.
Huntington—Virgil Camp	830 Jackson St., Huntington, Ind.
Indianapolis, First—Aaron Hayhurst	3618 E. 30th St., Indianapolis, Ind.
Indianapolis, Second—George Huff	1442 Cruft St., Indianapolis, Ind.
Indianapolis, Third—Elvin Hotle	1201 W. 21st St., Indianapolis, Ind.
Indianapolis, Fourth—Walter Speck	4631 Caroline Ave., Indianapolis, Ind.
Indianapolis, Brookside—Ralph McCrory	1533 N. Jefferson St., Indianapolis, Ind.
Indianapolis, Valley View—Dale Williams	1715 E. 67th St., Indianapolis, Ind.
Indianapolis, Virginia Ave.—Elmer Kizzee	1624 Norman Ave., Indianapolis, Ind.
Jasonville—To be supplied	
Jonesboro—Dennis Barber	Box 36, Jonesboro, Ind.

Kokomo—Clarence Morrison	1119 S. Bell St., Kokomo, Ind.
Lafayette—James Pursley	1312 Union St., Lafayette, Ind.
La Fountaine—John Paul Carr	2212 S. Adams St., Marion, Ind.
Lawrenceburg—Eula Kennedy	15 Tate St., Lawrenceburg, Ind.
Lebanon—Charles McHenry	804 S. Clark St., Lebanon, Ind.
Leisure—Howard Goins	1906 Coulter Ave., Kokomo, Ind.
Linton—Virgil Kelley	Linton, Ind.
Logansport—Carl Reed	1025 Pleasant Hill, Logansport, Ind.
Loogootee—Francis Porter	R. R., Loogootee, Ind.
Madison—Floyd E. Dunn	Madison, Ind.
Marion—Melvin Snyder	1211 S. Adams St., Marion, Ind.
Medora—Raymond Street	Medora, Ind.
Merom—Pearl Dean	R. R. 2, Shelburn, Ind.
Middletown—E. V. Halt	1609 N. Delaware St., Indianapolis, Ind.
Michigantown—Lonnie Cole	Michigantown, Ind.
Milton—Katie Locke and Esther White	Milton, Ind.
Mitchell—Lester Henry	301 Frank St., Mitchell, Ind.
Monon—James Douglass	Monon, Ind.
Morgantown—Marvin Jewell	Morgantown, Ind.
Muncie—Mark Storey	1112 S. Hackley St., Muncie, Ind.
New Albany—Ivan Canary	New Albany, Ind.
New Carlisle—Marshall Robbins	New Carlisle, Ind.
New Castle—O. W. Barnes	1402 S. 19th St., New Castle, Ind.
Noblesville—Mable Ribkee	1284 Christian Ave., Noblesville, Ind.
North Vernon—Hascue Carter	107 Jennings St., North Vernon, Ind.
Norway—Floyd Clark	R. R. 1, Monticello, Ind.
Oaktown—Walter Keeney	Oaktown, Ind.
Ogden—Glen Warren	R. R., Knightstown, Ind.
Ohio Ridge—Ray Weekly	2208 California St., Columbus, Ind.
Orleans—Walter Daugherty	383 W. Jackson St., Orleans, Ind.
Paoli—Moreland Yundt	Box 44, Paoli, Ind.
Richmond—Clarence Jester	118 Ridge St., Richmond, Ind.
Rising Sun—Carl Roark	Rising Sun, Ind.
Rodney—Robert Stunkel	Westport, Ind.
Rushville—George Phares	734 Fair St., Shelbyville, Ind.
Sanford—E. W. Wright	1304 S. 21st St., Terre Haute, Ind.
Scott City—Oran Spencer	R. R., Fairbanks Ind.
Seeleyville—Naomi Shumaker	R. R. 2, Brazil, Ind.
Shelburn—Murray Boothe	West Terre Haute, Ind.
Shelbyville—Edward and Bertha Schoeff	222 E. Pennsylvania St., Shelbyville, Ind.
Sheridan—Wayne Hill	R. R. 2, Royal Center, Ind.
Shoals—Lester Mayhew	Shoals, Ind.
Somerville—Wilkes Ragsdale	Somerville, Ind.
Spearsville—To be supplied	
South Bend—Gilbert Noel	1111 E. Indiana St., South Bend, Ind.
Sullivan—Roy Brown	627 Olivet St., Sullivan, Ind.
Terre Haute, Greenwood St.—Thurman Preusz	2836 S. First St., Terre Haute, Ind.
Terre Haute, Hulman St.—Angus Jeffers	2004 Hulman St., Terre Haute, Ind.
Terre Haute, Sixth Ave.—Glen Newton	1124 Seventh Ave., Terre Haute, Ind.
Terre Haute, Twelve Points—Harold Cortis	2304 Garfield Ave., Terre Haute, Ind.
Terre Haute, West—Jesse Hayhurst	2518 Jefferson St., Terre Haute, Ind.
Tipton—Floyd B. Dunn	450 Douglass St., Tipton, Ind.
Twin Oaks—Cleo Jones	R. R., Petersburg, Ind.
Tyner—Elza and Pearl Walker	Tyner, Ind.
Versailles—Harold Mason	Greensburg, Ind.
Vincennes—V. E. Tanksley	1709 Thirteenth St., Vincennes, Ind.

Wabash—Lindley and Beulah Arnett	431 Indiana St., Wabash, Ind.
Walkerton—Clarence Jackson	606 Michigan St., Walkerton, Ind.
Washington—Stewart Reprogie	Wheatland, Ind.
Westport—Irene Steger	Westport, Ind.
Wheatland—Stewart Reprogie	Wheatland, Ind.
Winchester—V. A. Leonard	447 Carl St., Winchester, Ind.
Windfall—Lee Goins	R. R. 5, Elwood, Ind.

REPORT OF DISTRICT STATISTICIAN

Pastors' Report—number of churches, 118; organized this year, 2; parsonages, 49; sermons preached, 9,399; prayer services conducted, 5,051; pastoral calls, 36,663; revivals conducted, 246; number seeking regeneration, 4,675; number seeking sanctification, 2,648; souls dealt with, 3,568; prayed with for healing, 4,418; baptisms, 331; communion services conducted, 233; children dedicated, 103; marriages, 181; funerals, 228; cash support, \$58,866.91; donations, \$8,139.84; gifts, \$4,297.00; total support, \$73,877.77.

Statistical Report—Members on roll, 4,495; names dropped, 231; transferred by letter, 118; number of deaths, 41; total removals, 404; additions by profession of faith, 513; additions by letter, 126; total additions, 573; ordained ministers, 186; licensed ministers, 109; local ministers, 94; deaconesses, 25; probationary members, 154; lay members, 4,268; total membership, 4,716; preaching services, 11,328; open-air services, 174; jail or prison services, 54; church prayer services, 4,762; cottage meetings, 2,100; other services, 742; total services, 20,769; number of tithers, 2,754; number subscribers to Advocate, 1,177.

Sunday School Report—Number of teachers and officers, 904; pupils enrolled, 7,748; total enrollment, 9,257; average attendance, 7,271; number on cradle roll, 2,735; number of sessions, 5,404; number of scholars converted during year, 379; number joined church, 252; cash brought forward, \$1,938.33; regular offerings, \$10,846.41; birthday offerings, \$869.29; special offerings, \$3,200.38; total receipts, \$17,634.10; literature, \$4,658.99; equipment, \$5,421.47; total expenditures, \$18,741.28; cash on hand, \$2,488.90.

Financial Statement—Cash brought forward, \$7,975.23; regular offerings, \$133,356.90; special offerings, \$23,972.21; total receipts, \$168,458.01; pastor's support, \$58,926.78; rents, \$5,251.53; interest, \$1,452.01; improvements, \$6,116.53; indebtedness, \$19,004.25; evangelists, \$4,398.71; Rescue Home, \$457.98; Old People's Home, \$904.64; district budget, \$9,157.04; district home missions, \$1,291.05; foreign missions, \$8,729.67; general home missions, \$940.88; general administration expense, \$2,465.31; Bible school, \$1,381.72; incidentals, \$18,369.20; total expenditures, \$159,688.36; cash on hand, \$7,623.95.

Property Statement—Church value, \$331,685.13; parsonage value, \$91,790.13; total property value, \$442,965.26; total debt on property, \$46,431.92; total equity in property, \$297,155.81.

Young People's Report—Number of meetings held, 2,274; number of members on roll, 1,056; active, 712; associate, 204; honorary, 323; cash brought forward, \$259.85; offerings received, \$1,980.72; total expenditures, \$2,699.13; cash on hand, \$357.41.

REPORT OF DEACONESSSES

Rose Donovan—Church services conducted, 14; times preached, 14.

Clyde Titus—Prayer services conducted, 1; visits, 1779; homes prayed in, 35; money spent for poor, \$95.93; garments distributed, 556; pages of literature distributed, 16,206.

Lillian Dresslar—Prayer services conducted, 6; cottage prayer services, 9; visits, 722; homes prayed in, 429; persons prayed with in own home, 90.

ANNUAL REPORTS (Summarized)

Alexandria—Pastor, L. M. Sanders. Non-assessable members, 7; assessable members, 19; total additions, 8; present membership, 26; re-

vivals, 2; professed sanctification, 8; professed regeneration, 12; number of tithers, 14; total services, 223; total calls, 169; prayed for healing, 5; total subscribers to Advocate, 1; average Sunday school attendance, 28; Young People's enrollment, unorganized.

Financial Report—Pastor's support, cash, \$255.06; amount of donations, \$65.00; rents, \$140.00; amount paid on local indebtedness, \$410.90; evangelists, \$27.64; district budget, \$21.00; foreign missions, \$15.67; total church offerings, \$360.73; Sunday school offerings, \$70.59; Young People's offerings, \$10.29; miscellaneous, \$559.27; total receipts, \$1,000.88; total expenditures, \$1,000.87; cash on hands \$000.01.

Property Statement—Value of church building, \$1,000.00; local indebtedness, \$556.00.

Anderson, First, 24th and Delaware—Pastor, L. L. Waddell. Non-assessable members, 3; assessable members, 178; total additions, 8; total removals, 7; present membership, 181; revivals, 2; professed sanctification, 110; professed regeneration, 140; number of tithers, 100; total services, 370; total calls, 819; prayed for healing, 75; marriages, 2; funerals, 19; total subscribers to Advocate, 50; average Sunday school attendance, 363; Young People's enrollment, 32.

Financial Report—Pastor's support, cash, \$2,340.00; amount paid on improvements, \$610.00; amount paid on local indebtedness, \$1,753.76; evangelists, \$230.00; district budget, \$413.47; home missions, \$87.35; amount paid to school at Frankfort, \$190.75; foreign missions, \$845.46; Old People's Home, \$91.00; Rescue Home, \$66.69; general budget, \$220.00; incidentals, \$1,149.61; cash brought forward, \$535.10; total church offerings, \$8,243.41; Sunday school offerings, \$1154.22; Young People's offerings, \$208.74; total receipts, \$10,141.47; total expenditures, \$9,067.50; cash on hands, \$1,073.97; camp meeting assessment, \$10.00.

Property Statement—Value of church building, \$8,500.00; value of parsonage, \$3,500.00.

Andrews, Corner Madison and Main—Pastor, R. O. Frazee. Non-assessable members, 1; assessable members, 16; present membership, 17; revivals, 3; professed sanctification, 21; professed regeneration, 45; number of tithers, 14; total services, 290; total calls, 260; prayed for healing, 7; funerals, 4; baptisms, 2; total subscribers to Advocate, 5; average Sunday school attendance, 37; Young People's enrollment, 8.

Financial Report—Pastor's support, cash, \$238.62; amount of donations, \$58.82; rents, \$15.65; amount paid on improvements, \$436.74; amount paid on local indebtedness, \$120.00; evangelists, \$92.77; district budget, \$34.07; home missions, \$1.59; amount paid to school at Frankfort, \$7.10; foreign missions, \$16.50; to other interests, \$60.11; cash brought forward, \$2.90; total church offerings, \$600.54; Sunday school offerings, \$65.06; total receipts, \$1,096.39; total expenditures, \$1,094.79; cash on hands, \$1.57.

Property Statement—Value of church building, \$1000.00; value of parsonage, \$1,000.00; local indebtedness, \$376.11.

Basslake, Knox, Ind. R. R. 3—Pastor, V. E. Wade. Assessable members, 16 total additions, 2; present membership, 16; revivals, 1; professed sanctification, 6; professed regeneration, 9; number of tithers, 8; total services, 231; total calls, 82; prayed for healing, 4; marriages, 1; funerals, 7; baptisms, 1; total subscribers to Advocate, 6; Young People's enrollment, 16.

Financial Report—Pastor's support, cash, \$375.86; amount of donations, \$270.78; evangelists, \$30.80; district budget, \$37.66; home missions, \$2.10; foreign missions, \$20.80; Old People's Home, \$1.05; to other interests, \$5.00; cash brought forward, \$5.00; total church offerings, \$522.02; Young People's offerings, \$13.13; miscellaneous, \$32.27; total receipts, \$535.15; total expenditures, \$524.02; cash on hands, \$11.13; camp meeting assessment, \$2.00.

Property Statement—Value of church building, \$2,500.00.

Beech Grove, 120 S. Fourth Ave.—Pastor, J. B. Douglass. Assessable members, 37; total additions, 7; total removals, 6; professed sanctifica-

tion, 5; professed regeneration, 14; number of tithers, 35; total services, 198; total calls, 246; prayed with for healing, 27; baptisms, 4; total subscribers to Advocate, 9; average Sunday school attendance, 60; Young People's society enrollment, 13.

Financial Report—Pastor's support, cash, \$374.15; donations, \$38.87; rents, \$1.80; amount paid on improvements, \$28.94; amount paid on local indebtedness, \$193.48; evangelists, \$1.24; district budget, \$31.00; home missions, \$6.70; foreign missions, \$41.13; Old People's Home, \$5.87; general budget, \$26.64; to other interests, \$26.25; amount of cash brought forward, \$45.30; total church offerings, \$1,017.86; Sunday school offerings, \$146.12; Young People's offerings, \$28.34; total receipts, \$1,133.84; total expenditures, \$990.22; cash on hands, \$59.30; camp meeting assessment, \$3.00.

Property Statement—Value of church building, \$2,500.00; value of parsonage, \$1,500.00; local indebtedness, \$457.00.

Bicknell, 301 Murlin St.—Pastor E. I. Faidley. Non-assessable members, 8; assessable members, 59; total additions, 18; total removals, 7; present membership, 67; revivals, 3; professed sanctification, 89; professed regeneration, 110; number of tithers, 39; total services, 298; total calls, 508; prayed for healing, 76; marriages, 3; funerals, 3; baptisms, 2; total subscribers to Advocate, 20; average Sunday school attendance, 97; Young People's enrollment, 40.

Financial Report—Pastor's support, cash, \$1,164.84; amount of donations, \$283.05; rents, \$120.00; amount paid on improvements, \$55.34; amount paid on local indebtedness, \$67.50; evangelists, \$175.23; district budget, \$148.74; home missions, \$8.90; amount paid to school at Frankfort, \$10.50; foreign missions, \$114.82; Old People's Home, \$11.97; general budget, \$11.90; cash brought forward, \$00.21; total church offerings, \$1,936.48; Sunday school offerings, \$202.02; Young People's offerings, \$3.52; miscellaneous, \$124.75; total receipts, \$2,142.02; total expenditures, \$2,071.23; cash on hands, \$70.79.

Property Statement—Value of church building, \$1,800.00; value of parsonage, \$1,200.00.

Brown's Chapel, Greenfield—Pastor, E. E. Crowder. Assessable members, 44; total additions, 6; total removals, 3; present membership, 44; revivals, 2; professed sanctification, 4; professed regeneration, 25; total services, 170; total calls, 220; prayed for healing, 11; marriages, 1; total subscribers to Advocate, 11; average Sunday school attendance, 49 plus.

Financial Report—Pastor's support, cash, \$700.74; amount of donations, \$406.44; rents, \$175.00; amount paid on improvements, \$224.55; district budget, \$81.40; home missions, \$21.81; amount paid to school at Frankfort, \$6.50; foreign missions, \$40.93; Old People's Home, \$23.57; Rescue Home, \$4.81; general budget, \$13.82; to other interests, \$242.49; cash brought forward, \$0.94; total church offerings, \$1,479.45; Sunday school offerings, \$111.93; total receipts, \$1,591.38; total expenditures, \$1,570.75; cash on hands, \$20.63; camp meeting assessment, \$3.00.

Property Statement—Value of church building, \$2,000.00.

Burns City—Pastor, Roscoe Wagoner; Non-assessable members, 1; assessable members, 22; total additions, 1; present membership, 22; revivals, 2; professed sanctification, 8; professed regeneration, 10; number of tithers, 11; total services, 172; total calls, 112; prayed for healing, 5; marriages, 1; baptisms, 3; total subscribers to Advocate, 3; average Sunday school attendance, 27.

Financial Report—Pastor's support, cash, \$345.41; amount of donations, \$93.85; amount paid on improvements, \$33.32; evangelists, \$82.00; district budget, \$43.10; home missions, \$7.20; amount paid to school at Frankfort, \$4.55; foreign missions, \$20.37; Old People's Home, \$7.00; Rescue Home, \$2.00; general budget, \$7.00; cash brought forward, \$13.86; total church offerings, \$613.18; Sunday School offerings, \$18.33; total receipts, \$645.36; total expenditures, \$591.03; cash on hands, \$54.33; camp meeting assessment, \$3.00.

MEMBERS AND DELEGATES



OF THE 1941 ASSEMBLY



Property Statement—Value of church building, \$1,000.00; value of parsonage, \$600.00.

Centerville, N. Morton Ave.—Pastor, J. F. Cotton. Assessable members, 27; total additions, 3; total removals, 9; present membership, 27; revivals, 2; professed sanctification, 6; professed regeneration, 13; number of tithers, 24; total services, 208; total calls, 480; prayed for healing, 37; marriages, 1; funerals, 3; baptisms, 5; total subscribers to Advocate, 3; average Sunday school attendance, 45.

Financial Report—Pastor's support, cash, \$669.69; amount of donations, \$111.41; rents, \$73.40; evangelists, \$40.00; district budget, \$56.53; home missions, \$22.13; amount paid to school at Frankfort, \$8.46; foreign missions, \$51.76; Old People's Home, \$9.93; general budget, \$20.13; cash brought forward, \$38.67; total church offerings, \$951.48; Sunday School offerings, \$73.01; miscellaneous, \$25.07; total receipts, \$990.15; total expenditures, \$951.04; cash on hands, \$39.11.

Chesterfield—Pastor, R. C. Hines. Assessable members, 36; total additions, 6; present membership, 36; revivals, 4; professed sanctification, 14; professed regeneration, 31; number of tithers, all; total services, 206; total calls, 270; prayed for healing, 28; marriages, 4; funerals, 5; baptisms, 5; total subscribers to Advocate, 8; average Sunday School attendance, 67; Young People's enrollment, 16.

Financial Report—Pastor's support, cash, \$430.00; amount paid on improvements, \$203.82; amount paid on local indebtedness, \$180.00; evangelists, \$200.00; district budget, \$10.50; home missions, \$10.14; foreign missions, \$57.30; cash brought forward, \$43.97; total church offerings, \$1,325.95; Sunday School offerings, \$222.19; Young People's offerings, \$20.87; total receipts, \$1612.98; total expenditures, \$1,236.48; cash on hands, \$376.50; camp meeting assessment, \$11.14.

Clarksburg—Pastor, Ernest Carroll. Non-assessable members, 8; assessable members, 40; total additions, 14; total removals, 2; present membership, 48; revivals, 2; professed sanctification, 44; professed regeneration, 63; number of tithers, 36; total services, 221; total calls, 285; prayed for healing, 26; marriages, 1; funerals, 1; total subscribers to Advocate, 20; average Sunday School attendance, 49; Young People's enrollment, 25.

Financial Report—Pastor's support, cash, \$312.51; amount of donations, \$142.79; amount paid on improvements, \$15.00; amount paid on local indebtedness, \$122.60; evangelists, \$64.00; district budget, \$31.53; home missions, \$7.42; amount paid to school at Frankfort, \$3.83; foreign missions, \$28.08; Rescue Home, \$3.83; general budget, \$9.50; cash brought forward, \$13.24; total church offerings, \$722.15; Sunday School offerings, \$89.76; Young People's offerings, \$11.00; total receipts, \$830.98; total expenditures, \$751.19; cash on hands, \$79.79.

Property Statement—Value of church building, \$650.00; value of parsonage, \$475.00; local indebtedness, \$487.50.

Clarks Hill—Pastor, Willard E. Knowles. Non-assessable members, 1; assessable members, 11; total additions, 2; total removals, 2; present membership, 11; revivals, 1; professed sanctification, 5; professed regeneration, 2; number of tithers, 9; total services, 147; total calls, 92; prayed for healing, 27; marriages, 3; funerals, 2; total subscribers to Advocate, 7; average Sunday school attendance, 18.

Financial Report—Pastor's support, cash, \$339.08; amount paid on state indebtedness, \$2.00; evangelists, \$48.00; district budget, \$12.50; home missions, \$4.15; amount paid to school at Frankfort, \$6.50; foreign missions, \$5.15; Old People's Home, \$0.55; Rescue Home, \$0.50; general budget, \$3.11; to other interests, \$125.04; total church offerings, \$551.31; Sunday school offerings, \$33.48; total receipts, \$584.79; total expenditures, \$573.22; cash on hands, \$11.57; camp meeting assessment, \$1.00.

Property Statement—Value of church building, \$800.00.

Coalmont—Pastor, Myrtle Coleman. Revivals, 1; professed sanctification, 1; professed regeneration, 6; number of tithers, 3; total services,

190; total calls, 169; prayed for healing, 12; baptisms, 1; total subscribers to Advocate, 1; average Sunday school attendance, 9.

Financial Report—Pastor's support, cash, \$1.20; amount of donations, \$3.00; amount paid on improvements, \$3.60; evangelists, \$6.00; district budget, \$2.48; home missions, \$1.53; amount paid to school at Frankfort, \$0.46; foreign missions, \$5.60; Old People's Home, \$0.50; Rescue Home, \$1.00; to other interests, \$16.21; total church offerings, \$35.05; Sunday school offerings, \$14.14; total receipts, \$51.19; total expenditures, \$48.19; cash on hands, \$2.28.

Property Statement—Value of church building, \$100.00.

College Corner—Pastors, Pearl and Elza Walker. Non-assessable members, 3; assessable members, 25; total additions, 6; present membership, 28; revivals, 3; professed sanctification, 17; professed regeneration, 61; number of tithers, 20; total services, 180; total calls, 525; prayed for healing, 38; funerals, 2; total subscribers to Advocate, 4; average Sunday school attendance, 58.

Financial Report—Pastor's support, cash, \$503.88; amount of donations, \$40.75; amount paid on improvements, \$21.50; evangelists, \$210.92; district budget, \$55.03; home missions, \$6.90; amount paid to school at Frankfort, \$10.17; foreign missions, \$25.14; Old People's Home, \$3.70; Rescue Home, \$2.72; general budget, \$4.15; total church offerings, \$828.92; Sunday school offerings, \$24.92; miscellaneous, \$50.00; total expenditures, \$878.92.

Property Statement—Value of church building, \$2,000.00; value of parsonage, \$800.00.

Concord—Pastors, Rev. Irvin and Freeda King. Assessable members, 51; total additions, 8; total removals, 3; present membership, 51; revivals, 1; professed sanctification, 10; professed regeneration, 14; number of tithers, 25; total services, 239; total calls, 86; prayed for healing, 10; average Sunday school attendance, 60.

Financial Report—Pastor's support, cash, \$189.68; amount of donations, \$13.62; rents, \$30.00; evangelists, \$156.23; district budget, \$35.69; home missions, \$3.22; amount paid to school at Frankfort, \$9.03; foreign missions, \$30.35; Old People's Home, \$1.46; Rescue Home, \$2.50; total church offerings, \$477.77; Sunday school offerings, \$33.91; total receipts, \$511.68; total expenditures, \$501.46; cash on hands, \$10.02.

Property Statement—Value of church building, \$1,000.00.

Connersville, Georgia Ave.—Pastor, Joseph Bryan. Non-assessable members, 5; assessable members, 18; total additions, 5; total removals, 5; present membership, 28; revivals, 4; professed sanctification, 25; professed regeneration, 96; number of tithers, 12; total services, 213; total calls, 135; prayed for healing, 15; marriages, 1; funerals, 2; baptisms, 2; total subscribers to Advocate, 4; average Sunday school attendance, 59.

Financial Report—Pastor's support, cash, \$436.65; amount of donations, \$112.36; amount paid on improvements, \$21.94; amount paid on local indebtedness, \$28.70; evangelists, \$247.47; district budget, \$48.82; home missions, \$5.50; amount paid to school at Frankfort, \$8.00; foreign missions, \$60.85; Rescue Home, \$1.10; cash brought forward, \$0.39; total church offerings, \$1,044.42; miscellaneous, \$72.64; total receipts, \$1,082.53; total expenditures, \$1,075.39; cash on hands, \$7.14.

Property Statement—Value of church building, \$1,000.00.

Davis School House—Pastor, Mattie Shelton. Assessable members, 14; present membership, 14; revivals, 2; professed sanctification, 28; professed regeneration, 26; number of tithers, 5; total services, 138; total calls, 150; prayed for healing, 36; funerals, 1; total subscribers to Advocate, 4; average Sunday school attendance, 15.

Financial Report—Pastor's support, cash, \$36.91; evangelists, \$38.50; district budget, \$3.07; home missions, \$1.00; amount paid to school at Frankfort, \$1.25; foreign missions, \$10.25; Rescue Home, \$1.00; general budget, \$1.00; to other interests, \$2.75; total church offerings, \$97.60; Sunday School offerings, \$5.68; total receipts, \$103.58; total expenditures, \$101.15; cash on hands, \$2.41; camp meeting assessment, \$3.00.

Delphi, Harrison and Union Sts.—Pastor, Joseph T. Thomas. Non-assessable members, 5; assessable members, 43; total removals, 3; present membership, 48; revivals, 2; professed sanctification, 9; professed regeneration, 110; number of tithers, 24; total services, 224; total calls, 367; prayed for healing, 13; marriages, 1; funerals, 2; total subscribers to Advocate, 22; average Sunday school attendance, 83 plus.

Financial Report—Pastor's support, cash, \$590.75; amount of donations, \$916.80; rents, \$159.00; amount paid on improvements, \$10.10; amount paid on local indebtedness, \$123.75; evangelists, \$161.37; district budget, \$88.46; home missions, \$14.61; amount paid to school at Frankfort, \$16.58; foreign missions, \$81.22; Old People's Home, \$4.00; Rescue Home, \$4.00; general budget, \$109.03; to other interests, \$171.53; cash brought forward, \$41.13; total church offerings, \$1,424.87; Sunday school offerings, \$239.34; total receipts, \$1,705.34; total expenditures, \$1,647.35; cash on hands, \$57.99; camp meeting assessment, \$3.00.

Property Statement—Value of church building, \$1,700.00; local indebtedness, \$1,200.00.

Dupont—Pastor, L. T. Crute. Assessable members, 11; present membership, 11; number of tithers, 5; total services, 157; prayed for healing, 3; funerals, 1; total subscribers to Advocate, 3; average Sunday school attendance, 11; Young People's enrollment, 10; (S. S. avg. for 30 Sun.)

Financial Report—Pastor's support, cash, \$176.71; amount of donations, \$28.17; rents, \$60.00; amount paid on improvements, \$106.31; amount paid on local indebtedness, \$3.50; district budget, \$2.60; home missions, \$2.00; foreign missions, \$6.40; Old People's Home, \$2.00; cash brought forward, \$3.79; total church offerings, \$176.71; Sunday school offerings, \$18.23; Young People's offerings, \$1.62; total receipts, \$289.81; total expenditures, \$255.01; cash on hands, \$34.80; camp meeting assessment, \$1.00.

Property Statement—Value of church building, \$1,000.00.

East Columbus, 423 Hinman St.—Pastor, E. J. Clem. Non-assessable members, 4; assessable members, 75; total additions, 18; present membership, 79; revivals, 2; professed sanctification, 39; professed regeneration, 65; total services, 273; total calls, 465; prayed for healing, 130; marriages, 1; funerals, 4; total subscribers to Advocate, 20; average Sunday school attendance, 106; Young People's enrollment, 38.

Financial Report—Pastor's support, cash, \$986.00; amount of donations, \$89.05; amount paid on improvements, \$78.96; amount paid on local indebtedness, \$320.91; evangelists, \$270.00; district budget, \$227.21; home missions, \$20.12; amount paid to school at Frankfort, \$22.95; foreign missions, \$141.24; Old People's Home, \$26.84; general budget, \$73.38; cash brought forward, \$25.92; total church offerings, \$2,616.39; Sunday school offerings, \$285.31; Young People's offerings, \$35.23; total receipts, \$2,936.93; total expenditures, \$2,687.96; cash on hands, \$248.97.

Property Statement—Value of church building, \$2,500.00; value of parsonage, \$2,000.00; local indebtedness, \$1,370.00.

East Enterprise—Pastor, Chas. I. Wilson. Assessable members, 45; total additions, 9; total removals, 1; present membership, 45; revivals, 3; professed sanctification, 25; professed regeneration, 39; number of tithers, 40; total services, 178; total calls, 191; prayed for healing, 27; marriages, 1; total subscribers to Advocate, 16; average Sunday school attendance, 55.

Financial Report—Pastor's support, cash, \$554.86; amount of donations, \$270.46; amount paid on improvements, \$40.40; amount paid on local indebtedness, \$220.00; evangelists, \$78.73; district budget, \$66.16; home missions, \$2.89; amount paid to school at Frankfort, \$14.25; foreign missions, \$99.72; Old People's Home, \$11.98; Rescue Home, \$5.42; general budget, \$6.13; to other interests, \$88.00; cash brought forward, \$2.50; total church offerings, \$1,191.10; Sunday School offerings, \$92.65; total receipts, \$1,283.75; total expenditures, \$1,263.60; cash on hands, \$17.15; camp meeting assessment, \$3.00.

Property Statement—Value of church building, \$3,000.00; value of parsonage, \$1,000.00; local indebtedness, \$160.00.

Elwood, 23rd and Main Sts.—Pastor, Geo. Huff. Assessable members, 115; total additions, 5; total removals, 7; present membership, 115; revivals, 3; professed sanctification, 26; professed regeneration, 119; number of tithers, 40; total services, 132; total calls, 657; prayed for healing, 60; marriages, 3; funerals, 6; children dedicated, 5; total subscribers to Advocate, 60; average Sunday school attendance, 142; Young People's enrollment, 25.

Financial Report—Pastor's support, cash, \$1,211.00; amount of donations, \$77.45; amount paid on improvements, \$586.16; evangelists, \$443.00; district budget, \$310.52; home missions, \$47.70; amount paid to school at Frankfort, \$44.60; foreign missions, \$270.81; Old People's Home, \$60.09; Rescue Home, \$33.90; general budget, \$136.77; to other interests, \$594.45; cash brought forward, \$88.01; total church offerings, \$3,848.76; Sunday School offerings, \$606.73; Young People's offerings, \$57.65; Total receipts, \$3,848.76; total expenditures, \$3,739.00; cash on hands, \$109.76; camp meeting assessment, \$7.00.

Property Statement—Value of church building, \$3,000.00; value of parsonage, \$2,500.00.

English—Pastor, G. R. Bateman. Non-assessable members, 16; Assessable members, 60; total additions, 21; total removals, 2; present membership, 76; revivals, 3; professed sanctification, 42; professed regeneration, 65; number of tithers, 52; total services, 239; total calls, 360; prayed for healing, 66; marriages, 2; funerals, 2; baptisms, 10; total subscribers to Advocate, 20; average Sunday school attendance, 106; Young People's enrollment, 26.

Financial Report—Pastor's support, cash, \$1,107.07; amount of donations, \$300.50; rents, \$127.50; amount paid on improvements, \$15.00; amount paid on local indebtedness, \$425.00; evangelists, \$340.70; district budget, \$159.61; home missions, \$17.41; amount paid to school at Frankfort, \$26.94; foreign missions, \$153.33; Old People's Home, \$27.23; Rescue Home, \$8.28; general budget, \$10.37; to other interests, \$94.62; total church offerings, \$2,664.73; Sunday school offerings, \$172.06; Young People's offerings, \$16.26; miscellaneous, \$147.77; total receipts, \$2,852.05; total expenditures, \$2,852.05; camp meeting assessment, \$3.90.

Property Statement—Value of church building, \$1,500; value of parsonage, \$2,500.

Elnora—Pastor, H. D. Scudder. Total additions, 3; total removals, 2; present membership, 41; revivals, 2; professed sanctification, 5; professed regeneration, 5; number of tithers, 22; total services, 185; total calls, 169; prayed for healing, 7; funerals, 1; total subscribers to Advocate, 13; average Sunday school attendance, 58.

Financial Report—Pastor's support, cash, \$449.39; amount of donations, \$148.50; rents, \$43.00; amount paid on improvements, \$129.80; evangelists, \$123.94; district budget, \$57.01; home missions, \$9.22; amount paid to school at Frankfort, \$7.54; foreign missions, \$46.14; Old People's Home, \$16.27; to other interests, \$33.09; total church offerings, \$922.72; Sunday school offerings, \$48.07; total receipts, \$970.79; total expenditures, \$963.47; cash on hands, \$7.32; camp meeting assessment, \$1.50.

Property Statement—Value of church building, \$2,000.00; value of parsonage, \$500.00.

Epson—Pastor, H. D. Scudder. Present membership, 20; revivals, 2; professed sanctification, 5; professed regeneration, 7; number of tithers, 7; total services, 142; total calls, 69; prayed for healing, 4; total subscribers to Advocate, 4; average Sunday school attendance, 27.

Financial Report—Pastor's support, cash, \$269.92; amount of donations, \$54.80; rents, \$37.50; amount paid on improvements, \$85.00; evangelists, \$44.00; district budget, \$29.36; home missions, \$4.59; amount paid to school at Frankfort, \$4.21; foreign missions, \$22.02; Old People's Home, \$9.60; general budget, \$1.90; total church offerings, \$508.10; Sun-

day school offerings, \$16.07; total receipts, \$524.17; total expenditures, \$524.17; camp meeting assessment, \$1.50.

Property Statement—Value of church building, \$800.00; value of parsonage, \$500.00.

Evansville, First, 1634 N. Sutton Ave.—Pastor, W. A. Frye. Non-assessable members, 19; assessable members, 61; total removals, 19; present membership, 61; revivals, 2; professed sanctification, 132; professed regeneration, 186; number of tithers, 40; total services, 178; total calls, 1,239; prayed for healing, 444; marriages, 2; funerals, 13; total subscribers to Advocate, 15; average Sunday school attendance, 155 plus; Young People's enrollment, 18.

Financial Report—Pastor's support, cash, \$936.00; amount of donations, \$87.39; amount paid on local indebtedness, \$350.00; evangelists, \$334.00; district budget, \$241.37; home missions, \$43.83; amount paid to school at Frankfort, \$27.06; foreign missions, \$179.46; Old People's Home, \$42.75; Rescue Home, \$16.78; general budget, \$86.83; to other interests, \$18.00; cash brought forward, \$82.17; total church offerings, \$2,669.70; Sunday school offerings, \$383.99; Young People's offerings, \$93.23; miscellaneous, \$367.29; total receipts, \$3,146.92; total expenditures, \$3,013.63; cash on hands, \$133.29; camp meeting assessment, \$3.00.

Property Statement—Value of church building, \$6,000; value of parsonage, \$6,000.00; local indebtedness, \$1,657.00.

Evansville, Forest Hills, 2745 Claremont, Ave.—Pastor, R. E. Nibarger. Non-assessable members, 3; assessable members, 95; total additions, 16; total removals, 5; present membership, 98; revivals, 3; professed sanctification, 132; professed regeneration, 109; number of tithers, 85; total services, 367; total calls, 448; prayed for healing, 37; marriages, 4; funerals, 5; baptisms, 11; total subscribers to Advocate, 25; average Sunday school attendance, 168; Young People's enrollment, 36.

Financial Report—Pastor's support, cash, \$1,204.00; amount of donations, \$100.80; amount paid on improvements, \$670.74; amount paid on local indebtedness, \$534.72; evangelists, \$535.00; district budget, \$246.94; home missions, \$29.16; amount paid to school at Frankfort, \$61.75; foreign missions, \$423.75; Old People's Home, \$39.98; Rescue Home, \$30.05; general budget, \$111.08; to other interests, \$727.25; cash brought forward, \$250.97; total church offerings, \$4,907.81; Sunday school offerings, \$417.47; Young People's offerings, \$223.81; total receipts, \$5,549.09; total expenditures, \$5,226.64; cash on hands, \$322.45; camp meeting assessment, \$3.00.

Property Statement—Value of church building, \$4,800.00; value of parsonage, \$4,000.00; local indebtedness, (parsonage) \$2,000.00.

Fairmount, Walnut and Madison—Pastor, J. W. Croy. Non-assessable members, 1; assessable members, 20; total additions, 3; total removals, 2; present membership, 21; revivals, 3; professed sanctification, 15; professed regeneration, 17; number of tithers, 10; total services, 197; total calls, 341; prayed for healing, 28; funerals, 5; total subscribers to Advocate, 12; average Sunday school attendance, 44.

Financial Report—Pastor's support, cash, \$328.06; amount of donations, \$103.84; evangelists, \$174.64; district budget, \$46.80; home missions, \$6.12; amount paid to school at Frankfort, \$4.96; foreign missions, \$46.87; Old People's Home, \$8.16; general budget, \$71.95; to other interests, \$24.19; cash brought forward, \$16.89; total church offerings, \$679.68; Sunday school offerings, \$119.97; total receipts, \$146.86; total expenditures, \$746.44; cash on hands, \$80.10.

Property Statement—Value of church building, \$1,200.00.

Forest—Pastor, Leonard Fletcher. Assessable members, 34; total removals, 3; present membership, 34; revivals, 3; professed sanctification, 18; professed regeneration, 39; number of tithers, 19; total services, 210; total calls, 227; prayed for healing, 8; funerals, 1; total subscribers to Advocate, 7; average Sunday school attendance, 53.

Financial report—Pastor's support, cash, \$464.02; amount of donations, \$18.50; amount paid on improvements, \$2.39; amount paid on local

indebtedness, \$97.75; evangelists, \$172.50; district budget, \$69.89; home missions, \$7.05; amount paid to school at Frankfort, \$2.88; foreign missions, \$66.03; Old People's Home, \$10.99; Rescue Home, \$2.00; general budget, \$18.87; to other interests, \$65.10; cash brought forward, \$28.00; total church offerings, \$923.69; Sunday school offerings, \$27.78; total receipts, \$979.47; total expenditures, \$979.47.

Property Statement—Value of church building, \$1,500.00; value of parsonage, \$680.00; local indebtedness, \$250.00.

Fort Wayne, 1704 S. Calhoun St.—Pastor, O. J. Briggs. Assessable members, 20; total addition, 1; total removals, 2; present membership, 20; revivals 2; professed sanctification, 12; professed regeneration, 28; number of tithers, 18; total services, 266; total calls, 115; prayed for healing, 55; total subscribers to Advocate, 10; Average Sunday school attendance, 32.

Financial Report—Pastor's support, cash, \$277.41; amount of donations, \$23.80; rents, \$450.00; amount paid on local indebtedness, \$40.00; evangelists, \$66.37; district budget, \$21.54; home district missions, \$6.00; amount paid to school at Frankfort, \$5.00; foreign missions, \$23.80; Old People's Home, \$4.00; Rescue Home, \$3.00; general budget, \$6.00; to home missions, \$7.20; cash brought forward, \$0.03; total church offerings, \$1,040.47; Sunday school offerings, \$80.30; total receipts, \$1,120.80; total expenditures, \$1,120.80; camp meeting assessment, \$5.00.

Frankfort, First, Indiana and Second Sts.—Pastor, F. J. Goins. Assessable members, 149; total additions, 20; total removals, 12; present membership, 149; revivals, 3; professed sanctification, 150; professed regeneration, 160; number of tithers, 55; total services, 181; total calls, 1,058; prayed for healing, 152; funerals, 8; total subscribers to Advocate, 12; average Sunday school attendance, 206; Young people's enrollment, 30.

Financial Report—Pastor's support, cash, \$1339.00; amount of donations, \$115.00; amount paid on improvements, \$75.84; amount paid on local indebtedness, \$2,925.00; evangelists, \$417.00; district budget, \$365.30; home missions, \$37.67; amount paid to school at Frankfort, \$57.63; foreign missions, \$450.00; Old People's Home, \$58.83; Rescue Home, \$40.94; general budget, \$145.45; to other interests, \$599.69; cash brought forward, \$406.09; total church offerings, \$6,753.76; Sunday school offerings, \$510.94; Young People's offerings, \$24.09; total receipts, \$535.03; total expenditures, \$354.65; cash on hands, \$189.38.

Property Statement—Value of church building, \$12,500.00; value of parsonage, \$2,000.00; local indebtedness, \$4,500.00.

Frankfort, Second, Washington and Kelly Sts.—Pastor, Owen Clark. Revivals, 2; professed sanctification, 4; professed regeneration, 19; total services, 107; total calls, 93; prayed for healing, 4; funerals, 1; total subscribers to Advocate, 1; average Sunday school attendance, 17.

Financial Report—Pastor's support, cash, \$25.38; evangelists, \$25.51; district budget, \$9.17; amount paid to school at Frankfort, \$1.78; foreign missions, \$2.70; Rescue Home, \$1.00; to other interests, \$35.37; total church offerings, \$83.40; Sunday School offerings, \$24.82; total receipts, \$108.22; total expenditures, \$100.91; cash on hands, \$7.31; camp meeting assessment, \$4.00.

Property Statement—Value of church building, \$1,000.00.

Frankton—Pastor, W. O. Toombs. Present membership, 31; revivals, 2; professed sanctification, 9; professed regeneration, 14; number of tithers, 10; total services, 206; total calls, 153; prayed for healing, 3; marriages, 3; funerals, 2; total subscribers to Advocate, 5; average Sunday school attendance, 39; Young People's enrollment, 15.

Financial Report—Pastor's support, cash, \$218.18; amount of donations, \$3.80; amount paid on improvements, \$518.18; evangelists, \$62.30; district budget, \$42.34; home missions, \$6.07; amount paid to school at Frankfort, \$7.00; foreign missions, \$141.65; general budget, \$21.60; to other interests, \$243.51; total church offerings, \$1,119.25; Sunday school offerings, \$144.06; Young People's offerings, \$18.11; total receipts, \$1,-

281.42; total expenditures, \$1,260.83; cash on hands, \$20.59; camp meeting assessment, \$5.00.

Property Statement—Value of church building, \$2,500.00.

French Lick, Indiana Ave.—Pastors, E. W. Hall and wife. Non-assessable members, 6; assessable members, 88; total additions, 24; total removals, 9; present membership, 94; revivals, 2; professed sanctification, 46; professed regeneration, 91; total services, 275; total calls, 1,006; prayed for healing, 62; marriages, 3; funerals, 9; baptisms, 14; total subscribers to Advocate, 35; average Sunday school attendance, 138.

Financial Report—Pastor's support, cash, \$1,095.15; amount of donations, \$95.15; amount paid on improvements, \$67.69; amount paid on local indebtedness, \$767.40; evangelists, \$163.61; district budget, \$150.50; home missions, \$30.00; amount paid to school at Frankfort, \$37.75; foreign missions, \$219.92; Old People's Home, \$35.00; Rescue Home, \$5.00; general budget, \$98.34; cash brought forward, \$250.65; total church offerings, \$3,021.73; Sunday school offerings, \$546.49; total receipts, \$3,568.22; total expenditures, \$3,436.89; cash on hands, \$131.33; camp meeting assessment, \$5.00.

Property Statement—Value of church building, \$2,500.00; value of parsonage, \$2,500.00.

Fulton—Pastor, James E. Kerby. Assessable members, 41; total additions, 2; total removals, 5; present membership, 41; revivals, 3; number of tithers, 41; total services, 129; total calls, 195; prayed for healing, 26; marriages, 1; funerals, 1; total subscribers to Advocate, 12; average Sunday school attendance, 37; Young People's enrollment, 19.

Financial Report—Pastor's support, cash, \$669.58; amount of donations, \$77.75; rents, \$120.00; amount paid on improvements, \$77.66; amount paid on local indebtedness, \$85.00; evangelists, \$117.22; district budget, \$98.34; home missions, district, \$15.90; amount paid to school at Frankfort, \$10.67; Old People's Home, \$21.12; general budget, \$151.28; cash brought forward, \$41.73; total church offerings, \$1,251.46; Sunday school offerings, \$81.71; Young People's offerings, \$105.92; total receipts, \$1,480.82; total expenditures, \$1,435.52; cash on hands, \$45.30.

Property Statement—value of church building, \$1,500; value of parsonage, \$1,000; local indebtedness, \$515.00.

Greensburg, W. Central Ave.—Pastor, Clarence Hamilton. Non-assessable members, 3; assessable members, 55; total additions, 8; total removals, 4; present membership, 55; revivals, 3; professed sanctification, 61; professed regeneration, 116; number of tithers, 32; total services, 220; total calls, 387; prayed for healing, 53; marriages, 1; funerals, 2; baptisms, 6; total subscribers to Advocate, 10; average Sunday school attendance, 71.

Financial Report—Pastor's support, cash, \$830.00; amount of donations, \$127.30; amount paid on improvements, \$1.90; amount paid on local indebtedness, \$94.38; evangelists, \$279.62; district budget, \$144.21; home missions, \$14.60; amount paid to school at Frankfort, \$24.40; foreign missions, \$67.54; Old People's Home, \$15.78; Rescue Home, \$26.72; general budget, \$11.47; to other interests, \$10.00; cash brought forward, \$133.65; total church offerings, \$1,970.02; Sunday school offerings, \$182.62; miscellaneous, \$307.88; total receipts, \$2,286.29; total expenditures, \$2,030.34; cash on hands, \$255.95; camp meeting assessment, \$15.00.

Property Statement—Value of church building, \$1,700; value of parsonage, \$1,000; local indebtedness, \$490.53.

Greenwood, E. Main St.—Pastor, W. E. McGinnis. Non-assessable members, 1; assessable members, 16; total removals, 1; present membership, 17; revivals, 2; professed regeneration, 9; total services, 256; total calls, about 800; prayed for healing, 10; funerals, 3; total subscribers to Advocate, 3; average Sunday school attendance, 39.

Financial Report—Pastor's support, cash, \$254.60; amount of donations, \$191.20; amount paid on improvements, \$47.52; amount paid on local indebtedness, \$114.88; evangelists, \$109.25; district budget, \$22.69; home missions, \$3.00; foreign missions, \$29.47; general budget, \$2.65;

cash brought forward, \$9.50; total church offerings, \$914.77; Sunday school offerings, \$98.27; Young People's offerings, \$27.43; miscellaneous, \$20.42; total receipts, \$1,040.47; total expenditures, \$995.14; cash on hands, \$45.33.

Property Statement—Value of church building, \$2,000.00; value of parsonage, \$2,500.00; local indebtedness, \$360.00; rental, \$750.00.

Hartsville—Pastor, Clarence Klopfenstein. Non-assessable members, 3; assessable members, 26; total additions, 3; total removals, 2; present membership, 24; revivals, 2; professed sanctification, 3; professed regeneration, 6; total services, 174; total calls, 391; prayed for healing, 7; funerals, 4; total subscribers to Advocate, 3; average Sunday school attendance, 20.

Financial Report—Pastor's support, cash, \$186.10; amount of donations, \$148.75; rents, \$72.00; amount paid on improvements, \$35.41; evangelists, \$60.78; district budget, \$33.60; amount paid to school at Frankfort, \$1.00; foreign missions, \$27.10; Old People's Home, \$4.14; Rescue Home, \$2.55; general budget, \$8.28; cash brought forward, \$1.00; total church offerings, \$465.63; Sunday school offerings, \$36.03; total receipts, \$506.73; total expenditures, \$484.56; cash on hands, \$22.17.

Property Statement—Value of church building, \$800.00; value of parsonage, \$1,000.

Harvey Flat, Alton, Ind.—Pastor, G. R. Bateman. Non-assessable members, 8; assessable members, 12; total additions, 8; total removals, 5; present membership, 20; revivals, 2; professed sanctification, 6; professed regeneration, 10; number of tithers, 12; total services, 163; total calls, 18; marriages, 1; funerals, 1; baptisms, 6; total subscribers to Advocate, 3; average Sunday school attendance, 26.

Financial Report—Pastor's support, cash, \$112.00; amount of donations, \$26.00; amount paid on improvements, \$25.00; evangelists, \$73.00; district budget, \$11.09; foreign missions, \$10.50; total church offerings, \$196.50; Sunday school offerings, \$8.40; total receipts, \$196.50; total expenditures, \$196.50.

Hope—Pastor, Clarence May. Non-assessable members, 2; assessable members, 40; total additions, 15; total removals, 2; present membership, 42; revivals, 2; professed sanctification, 58; professed regeneration, 73; number of tithers, 34; total services, 198; total calls, 244; prayed for healing, 40; marriages, 1; funerals, 6; baptisms, 14; total subscribers to Advocate, 12; average Sunday school attendance, 59.

Financial Report—Pastor's support, cash, \$353.88; amount of donations, \$144.10; amount paid on improvements, \$52.83; amount paid on local indebtedness, \$62.40; evangelists, \$115.00; district budget, \$48.67; amount paid to school at Frankfort, \$3.62; foreign missions, \$19.04; Old People's Home, \$2.71; Rescue Home, \$2.50; general budget, \$8.56; total church offerings, \$761.32; Sunday school offerings, \$53.86; total receipts, \$815.18; total expenditures, \$751.45; cash on hands, \$45.95; camp meeting assessment, \$3.00.

Property Statement—Value of church building, \$800.00; value of parsonage, \$600.00; local indebtedness, \$282.28.

Howard Chapel—Pastor, Ralph Hamilton. Assessable members, 5; total removals, 5; present membership, 5; revivals, 1; professed sanctification, 2; professed regeneration, 4; number of tithers, 5; total services, 93; total calls, 40; prayed for healing, 70; marriages, 1; total subscribers to Advocate, 1.

Financial Report—Pastor's support, cash, \$7.75; amount of donations, \$3.00; evangelists, \$25.00; home missions, \$3.00; foreign missions, \$16.55; general budget, \$2.50; miscellaneous, \$6.06; cash on hands, \$21.94.

Property Statement—Value of church building, \$600.00.

Huntington, 830 Jackson St.—Pastor, Virgil H. Camp. Non-assessable members, 3; assessable members, 47; total additions, 4; present membership, 50; revivals, 3; professed sanctification, 36; professed regeneration, 61; number of tithers, 20; total services, 159; total calls, 318; prayed for healing, 78; marriages, 5; funerals, 11; total subscribers to

Advocate, 16; average Sunday school attendance, 74; Young People's enrollment, 26.

Financial Report—Pastor's support, cash, \$655.23; amount of donations, \$125.45; rents, \$96.00; amount paid on local indebtedness, \$192.08; evangelists, \$92.45; district budget, \$104.67; home missions, \$16.49; amount paid to school at Frankfort, \$15.88; foreign missions, \$52.26; Old People's Home, \$7.95; Rescue Home, \$4.31; general budget, \$82.49; cash brought forward, \$40.91; total church offerings, \$1,462.09; Sunday school offerings, \$161.89; Young People's offerings, \$61.85; total receipts, \$1,685.83; total expenditures, \$1,614.30; cash on hands, \$71.53.

Property Statement—Value of church building, \$1,000.00; local indebtedness, \$396.00.

Indianapolis, First, 30th and Gale Sts.—Pastor, Aaron Hayhurst. Non-assessable members, 2; assessable members, 147; total additions, 4; total removals, 8; present membership, 149; revivals, 3; seeking sanctification, 115; seeking regeneration, 170; total services, 240; total calls, 1, 105; prayed for healing, 110; marriages, 7; funerals, 10; baptisms, 1; average Sunday school attendance, 278; Young People's enrollment, 59.

Financial Report—Pastor's support, cash, \$2,060.00; amount of donations, \$196.41; amount paid on improvements, \$379.71; amount paid on local indebtedness, \$876.25; evangelists, \$613.62; district budget, \$596.06; home missions, \$54.00; amount paid to school at Frankfort, \$75.50; foreign missions, \$311.59; Old People's Home, \$72.00; Rescue Home, \$55.00; general budget, \$165.00; to other interests, \$793.04; cash brought forward, \$505.81; total church offerings, \$7,549.38; Sunday school offerings, \$736.42; Young People's offerings, \$19.75; total receipts, \$8,305.55; total expenditures, \$7,038.98; cash on hands, \$1,772.38; camp meeting assessment, \$25.50.

Property Statement—Value of church building, \$7,000.00; value of parsonage, \$5,000.00.

Indianapolis, Second, 1415 Cruft St.—Pastor, Lester Mayhew. Non-assessable members, 20; assessable members, 85; total additions, 18; total removals, 3; present membership, 103; revivals, 5; professed sanctification, 34; professed regeneration, 91; number of tithers, 85; total services, 221; total calls, 473; prayed for healing, 131; marriages, 6; funerals, 9; total subscribers to Advocate, 45; average Sunday school attendance, 97; Young People's enrollment, 25.

Financial Report—Pastor's support, cash, \$1,326.00; amount of donations, \$322.19; amount paid on improvements, \$596.87; amount paid on local indebtedness, \$214.86; evangelists, \$260.00; district budget, \$159.20; home missions, \$29.58; amount paid to school at Frankfort, \$35.00; foreign missions, \$200.05; Old People's Home, \$38.13; Rescue Home, \$36.70; general budget, \$99.97; to other interests, \$526.35; cash brought forward, \$482.77; total church offerings, \$3,303.87; Sunday school offerings, \$252.99; Young People's offerings, \$52.09; miscellaneous, \$429.13; total receipts, \$4,618.07; total expenditures, \$3,862.24; cash on hands, \$267.91; camp meeting assessment, \$3.00.

Property Statement—Value of church building, \$2,500.00; value of parsonage, \$2,500.00; local indebtedness, \$1,400.00.

Indianapolis, Third, 21st and Gent Sts.—Pastor, Elvin F. Hotle. Assessable members, 22; total additions, 18; total removals, 5; present membership, 22; revivals, 2; professed sanctification, 52; professed regeneration, 157; total services, 253; total calls, 242; prayed for healing, 43; marriages, 1; funerals, 2; total subscribers to Advocate, 25; average Sunday school attendance, 60 plus.

Financial Report—Pastor's support, cash, \$325.52; amount of donations, \$106.17; rents, \$155.00; amount paid on improvements, \$162.78; amount paid on local indebtedness, \$119.53; evangelists, \$262.35; district budget, \$4.59; home missions, \$12.75; amount paid to school at Frankfort, \$12.10; foreign missions, \$39.95; Old People's Home, \$8.75; Rescue Home, \$1.00; general budget, \$28.65; total church offerings, \$1,013.74; Sunday school offerings, \$146.20; miscellaneous, \$51.35; total receipts,

\$1,211.29; total expenditures, \$1,207.58; cash on hands, \$3.71; camp meeting assessment, \$3.00.

Property Statement—Value of church building, \$5,000.00; local indebtedness, \$3,477.47.

Indianapolis, Fourth, 1733 E. 46th St.—Pastor, Walter Speck. Assessable members, 59; total additions, 6; total removals, 9; present membership, 59; revivals, 3; total services, 156; total calls, 420; prayed for healing, 12; marriages, 2; funerals, 5; total subscribers to Advocate, 32; average Sunday School attendance, 82; Young People's enrollment, 29.

Financial Report—Pastor's support, cash, \$1,300.00; amount of donations, \$50.00; amount paid on improvements, \$120.00; amount paid on local indebtedness, \$192.00; evangelists, \$277.25; district budget, \$60.00; home missions, \$6.30; amount paid to school at Frankfort, \$4.00; foreign missions, \$225.53; Old People's Home, \$18.59; general budget, \$63.00; to other interests, \$425.64; cash brought forward, \$92.00; total church offerings, \$2,521.57; Sunday school offerings, \$178.16; Young People's offerings, \$67.97; total receipts, \$2,767.70; total expenditures, \$2,692.31; cash on hands, \$75.39.

Property Statement—Value of church building, \$7,000.00; local indebtedness, \$1,300.00.

Indianapolis, Brookside, Brookside and Jefferson Sts.—Pastor, Ralph McCrory. Non-assessable members, 6; assessable members, 51; total additions, 14; total removals, 12; present membership, 57; revivals, 2; professed sanctification, 34; professed regeneration, 89; total services, 153; total calls, 612; prayed for healing, 40; marriages, 6; funerals, 7; total subscribers to Advocate, 23; average Sunday school attendance, 82; Young People's enrollment, 11.

Financial Report—Pastor's support, cash, \$1,109.00; amount of donations, \$28.25; amount paid on improvements, \$309.00; amount paid on local indebtedness, \$480.00; evangelists, \$163.00; district budget, \$156.45; home missions, \$16.20; foreign missions, \$100.00; Old People's Home, \$14.82; Rescue Home, \$5.80; general budget, \$25.46; to other interests, \$338.13; cash brought forward, \$51.61; total church offerings, \$2,858.39; Sunday school offerings, \$125.72; Young People's offerings, \$24.69; total receipts, \$3,008.80; total expenditures, \$2,874.96; cash on hands, \$133.84; camp meeting assessment, \$3.00.

Property Statement—Value of church building, \$2,000.00; value of parsonage, \$2,000.00; local indebtedness, \$3,000.00.

Indianapolis, Valley View, 69th and Evanston Sts.—Pastor, Dale Williams. Non-assessable members, 5; assessable members, 20; total additions, 5; total removals, 3; present membership, 25; revivals, 2; professed sanctification, 25; professed regeneration, 37; number of tithers, 8; total services, 206; total calls, 144; prayed for healing, 8; marriages, 2; funerals, 1 (assistant); total subscribers to Advocate, 10; average Sunday school attendance, 57; Young People's enrollment, 16.

Financial Report—Pastor's support, cash, \$21.08; amount of donations, \$62.20; rents, \$192.00; amount paid on local indebtedness, \$8.00; evangelists, \$195.00; district budget, \$9.63; home missions, \$6.07; amount paid to school at Frankfort, \$2.50; foreign missions, \$39.34; Old People's Home, \$11.00; Rescue Home, \$2.22; cash brought forward, \$6.35; total church offerings, \$670.62; Sunday school offerings, \$215.30; Young People's offerings, \$26.39; total receipts, \$912.31; total expenditures, \$891.30; cash on hands, \$21.01.

Property Statement—Value of church building, \$1,800.00; local indebtedness, \$41.00.

Indianapolis, Virginia Avenue, 634 Virginia Ave.—Pastor, Elmer Kizsee. Assessable members, 16; total additions, 16; present membership, 16; revivals, 2; funerals, 7; baptisms, 2.

Financial Report—Total receipts, \$460.15; total expenditures, \$456.46; cash on hands, \$3.69.

Jasonville, 407 E. Main St.—Pastor, R. W. Brown. Non-assessable members, 6; assessable members, 8; total additions, 1; total removals, 1;

present membership, 14; professed sanctification, 2; number of tithers, 3; total services, 166; total calls, 322; prayed for healing, 15; baptisms, 1; total subscribers to Advocate, 2; average Sunday school attendance, 18.

Financial Report—Pastor's support, cash, \$159.46; amount of donations, \$59.23; rents, \$60.00; home missions, \$5.25; foreign missions, \$3.00; Old People's Home, \$4.45; cash brought forward, \$3.07; total church offerings, \$306.78; Sunday school offerings, \$15.39; total receipts, \$309.85; total expenditures, \$306.34; cash on hands, \$3.51.

Property Statement—Value of church building, \$500.00.

Jonesboro—Pastor, Dennis Barber. Non-assessable members, 4; assessable members, 41; total additions, 10; total removals, 1; present membership, 45; revivals, 3; professed sanctification, 39; professed regeneration, 90; number of tithers, 15; total services, 220; total calls, 400; prayed for healing, 26; marriages, 3; funerals, 4; baptisms, 5; total subscribers to Advocate, 5; average Sunday school attendance, 73; Young People's enrollment, 25.

Financial Report—Pastor's support, cash, \$427.60; amount of donations, \$47.00; rents, \$180.00; amount paid on improvements, \$32.93; amount paid on local indebtedness, \$906.49; evangelists, \$529.01; district budget, \$147.10; home missions, \$7.90; amount paid to school at Frankfort, \$25.27; foreign missions, \$49.26; Old People's Home, \$4.93; Rescue Home, \$3.33; general budget, \$15.00; cash brought forward, \$128.99; total church offerings, \$2,594.74; Sunday school offerings, \$239.81; miscellaneous, \$450.58; total receipts, \$2,834.55; total expenditures, \$2,766.22; cash on hands, \$68.33; camp meeting assessment, \$3.00.

Property Statement—Value of church building, \$12,500.00; value of parsonage, \$1,500.00; local indebtedness, \$821.00.

Kokomo, 1128 S. Purdum St.—Pastor, Carl R. Reed. Assessable members, 102; total additions, 10; total removals, 1; present membership, 102; revivals, 2; professed sanctification, 18; professed regeneration, 66; number of tithers, 67; total services, 196; total calls, 731; prayed for healing, 49; marriages, 2; funerals, 3; baptisms, 3; total subscribers to Advocate, 22; average Sunday school attendance, 196.

Financial Report—Pastor's support, cash, \$1,150.00; amount of donations, \$40.60; rents, \$12.00; amount paid on improvements, \$380.74; amount paid on local indebtedness, \$280.40; evangelists, \$172.13; district budget, \$190.85; home missions, \$32.40; amount paid to school at Frankfort, \$43.04; foreign missions, \$317.22; Old People's Home, \$43.20; Rescue Home, \$31.45; general budget, \$110.00; to other interests, \$570.73; cash brought forward, \$233.58; total church offerings, \$3,481.73; Sunday school offerings, \$850.65; Young People's offerings, \$190.01; total receipts, \$4,522.39; total expenditures, \$4,266.74; cash on hands, \$255.65; camp meeting assessment, \$14.78.

Property Statement—Value of church building, \$4,700.00; value of parsonage, \$2,500.00; local indebtedness, \$700.00.

Lafayette, 19th and Adams Sts.—Pastor, J. L. Pursley. Present membership, 33; total additions, 2; total removals, 2; revivals, 1; professed regeneration, 65; professed sanctification, 14; number of tithers, 10; total services, 190; total calls, 400; prayed with for healing, 29; marriages, 1; funerals, 1; total subscribers to Advocate, 4; average Sunday school attendance, 62.

Financial Report—Pastor's support, cash, \$724.20; donations, \$149.87; rents, \$20.00; amount paid on improvements, \$50.00; amount paid on local indebtedness, \$270.00; evangelists, \$50.00; district budget, \$70.40; foreign missions, \$60.48; general budget, \$3.00; amount of cash brought forward, \$151.72; total church offerings, \$1,326.11; Sunday school offerings, \$216.33; total receipts, \$1,602.92; total expenditures, \$1,551.54; cash on hands, \$51.38.

Property Statement—Value of church building, \$7,000.00; value of church parsonage, \$2,000.00; local indebtedness, \$1,730.

LaFontaine—Pastor, C. Gilbert Pegg. Present membership, 11; revivals, 1; professed regeneration, 4; number of tithers, 5; total services,

158; total calls, 211; prayed with for healing, 7; total subscribers to Advocate, 3.

Financial Report—Pastor's support, cash, \$205.23; donations, \$19.26; evangelists, \$40.13; district budget, \$43.14; foreign missions, \$5.02; Rescue Home, \$0.60; amount of cash brought forward, \$23.69; total church offerings, \$363.37; Sunday school offerings, \$47.31; total receipts, \$434.37; total expenditures, \$431.74; cash on hands, \$2.63.

Property Statement—Value of church building, \$500.00.

Lawrenceburg, Tate and Walnut Sts.—Pastor, Eula Kennedy. Assessable members, 48; total additions, 11; present membership, 48; revivals, 3; professed sanctification, 18; professed regeneration, 51; number of tithers, 26; total services, 311; total calls, 376; prayed for healing, 22; marriages, 6; funerals, 6; baptisms, 12; total subscribers to Advocate, 31; average Sunday school attendance, 57; Young People's enrollment, 20.

Financial Report—Pastor's support, cash, \$787.70; amount of donations, \$37.87; cash donations, \$99.99; amount paid on improvements, \$80.58; amount paid on local indebtedness, \$332.80; evangelists, \$135.00; district budget, \$86.49; home missions, \$11.07; amount paid to school at Frankfort, \$11.69; foreign missions, \$93.16; Old People's Home, \$7.25; Rescue Home, \$14.25; general budget, \$8.00; to other interests, \$226.77; total church offerings, \$1,836.56; Sunday school offerings, \$150.65; Young People's offerings, \$19.23; total receipts, \$2,006.44; total expenditures, \$1,925.37; cash on hands, \$81.07; camp meeting assessment, \$3.00.

Property Statement—Value of church building, \$5,000.00; value of parsonage, \$3,000.00; local indebtedness, \$1,632.07.

Lebanon, West and Ash Sts.—Pastor, C. Morrison. Non-assessable members, 20; assessable members, 57; total additions, 4; total removals, 2; present membership, 75; revivals, 2; professed sanctification, 19; professed regeneration, 62; number of tithers, 45; total services, 220; total calls, 621; prayed for healing, 81; marriages, 3; funerals, 7; total subscribers to Advocate, 15; average Sunday school attendance, 129; Young People's enrollment, 44.

Financial Report—Pastor's support, cash, \$1,092.00; amount of donations, \$67.00; rents, \$141.00; amount paid on improvements, \$227.12; amount paid on local indebtedness, \$120.00; evangelists, \$177.96; district budget, \$174.02; home missions, \$20.28; amount paid to school at Frankfort, \$25.91; foreign missions, \$181.13; Old People's Home, \$26.52; Rescue Home, \$7.87; general budget, \$55.12; cash brought forward, \$42.09; total church offerings, \$2,624.51; Young People's offerings, \$5.82; miscellaneous, \$394.45; total receipts, \$2,635.33; total expenditures, \$2,538.43; cash on hands, \$96.90; camp meeting assessment, \$3.00.

Property Statement—Value of church building, \$5,366.13; value of parsonage, \$1,360.00; local indebtedness, \$741.50.

Leisure—Pastor, Howard Goins. Non-assessable members, 10; assessable members, 7; total removals, 1; present membership, 17; professed sanctification, 1; number of tithers, 6; total services, 125; total calls, 260; prayed for healing, 25; funerals, 2; average Sunday school attendance, 10.

Financial Report—Pastor's support, cash, \$172.75; amount of donations, \$6.55; amount paid on improvements, \$40.00; district budget, \$12.00; home missions, \$10.00; foreign missions, \$41.95; Old People's Home, \$4.00; cash brought forward, \$14.24; total church offerings, \$352.09; Sunday school offerings, \$28.74; miscellaneous, \$1.05; total receipts, \$381.88; total expenditures, \$371.63; cash on hands, \$10.25; camp meeting assessment, \$3.00.

Property Statement—Value of church building, \$2,500.00.

Linton—Pastor, Albert Marley. Non-assessable members, 6; assessable members, 30; total additions, 1; total removals, 1; present membership, 37; revivals, 2; professed sanctification, 20; professed regeneration, 36; number of tithers, 10; total services, 219; total calls, 150; prayed for healing, 15; funerals, 4; total subscribers to Advocate, 7; average Sunday school attendance, 40; Young People's enrollment, 21.

Financial Report—Pastor's support, cash, \$373.17; amount of donations, \$51.01; amount paid on improvements, \$32.20; evangelists, \$102.28; district budget, \$41.98; home missions, \$3.05; amount paid to school at Frankfort, \$5.41; foreign missions, \$99.84; Old People's Home, \$8.32; Rescue Home, \$0.65; general budget, \$6.81; to other interests, \$5.05; total church offerings, \$674.42; Sunday school offerings, \$47.86; Young People's offerings, \$14.32; miscellaneous, \$24.58; total receipts, \$738.16; total expenditures, \$720.46; cash on hands, \$17.70; camp meeting assessment, \$4.00.

Property Statement—Value of church building, \$1,000.00; value of parsonage, \$800.00.

Logansport, 301 E. Linden—Pastor, C. D. Jester. Revivals, 3; professed sanctification, 6; professed regeneration, 20; total calls, 273; prayed for healing, 28; marriages, 1; funerals, 4; total subscribers to Advocate, 8; average Sunday school attendance, 90½; Young People's enrollment, 22.

Financial Report—Pastor's support, cash, \$1,083.75; amount paid on improvements, \$155.46; amount paid on local indebtedness, \$242.00; evangelists, \$85.00; district budget, \$149.92; home missions, \$20.30; amount paid to school at Frankfort, \$29.93; foreign missions, \$92.43; Old People's Home, \$23.76; Rescue Home, \$11.55; general budget, \$61.82; cash brought forward, \$24.25; total church offerings, \$2,472.00; Sunday school offerings, \$219.37; Young People's offerings, \$19.60; miscellaneous, \$564.82; total receipts, \$2,735.25; total expenditures, \$2,500.81; cash on hands, \$234.44; camp meeting assessment, \$3.00.

Property Statement—Value of church building, \$4,500.00; value of parsonage, \$2,500.00; local indebtedness, \$1,077.71.

Loogootee, Mt. Zion, R. R. 4, Loogootee—Pastor, Louis Stroud. Non-assessable members, 14; assessable members, 49; total additions, 37; total removals, 11; Present membership, 61; revivals, 3; professed sanctification, 74; professed regeneration, 122; number of tithers, 20; total services, 230; total calls, 638; prayed for healing, 57; marriages, 1; funerals, 2; baptisms, 29; total subscribers to Advocate, 8; average Sunday school attendance, 69; Young People's enrollment, 58.

Financial Report—Pastor's support, cash, \$306.00; amount of donations, \$50.84; rents, \$60.00; amount paid on improvements, \$194.37; evangelists, \$107.61; district budget, \$31.49; home missions, \$2.12; amount paid to school at Frankfort, \$3.00; foreign missions, \$13.61; Old People's Home, \$6.13; Rescue Home, \$3.20; general budget, \$3.15; to other interests, \$3.96; cash brought forward, \$0.07; total church offerings, \$818.38; Sunday school offerings, \$36.68; Young People's offerings, \$36.45; miscellaneous, \$134.88; total receipts, \$1,002.35; total expenditures, \$995.06; cash on hands, \$7.29; camp meeting assessment, \$3.90.

Property Statement—Value of church building, \$2,500.00; value of parsonage, \$1,500.00; local indebtedness, \$108.00.

Madison, 312 E. Fifth St.—Pastor, Floyd E. Dunn. Present membership, 38; total additions, 8; total removals, 4; revivals, 2; professed regeneration, 39; professed sanctification, 21; number of tithers, 16; total services, 204; total calls, 460; prayed with for healing, 37; funerals, 1; total subscribers to Advocate, 24; average Sunday school attendance, 69.

Financial Report—Pastor's support, cash, \$492.82; donations, \$112.00; rents, \$150.00; amount paid on improvements, \$77.49; evangelists, \$231.25; district budget, \$62.99; home missions, \$4.20; foreign missions, \$37.36; Old People's Home, \$4.66; Rescue Home, \$8.57; general budget, \$21.89; total church offerings, \$1,138.69; Sunday school offerings, \$75.43; miscellaneous, \$76.03; total receipts, \$1,138.96; total expenditures, \$1,128.81; cash on hands, \$10.15.

Property Statement—Value of church building, \$2,000.00.

Marion, 10th and "E" Sts.—Pastor, Melvin H. Snyder. Non-assessable members, 9; assessable members, 97; total additions, 16; total removals, 16; present membership, 106; revivals, 2; professed sanctification, 41; professed regeneration, 160; total services, 257; total calls, 439;

prayed for healing, 37; marriages, 5; funerals, 17; baptisms, 2; average Sunday school attendance, 202; Young People's enrollment, 69.

Financial Report—Pastor's support, cash, \$1,609.34; amount of donations, \$31.55; rents, \$264.00; amount paid on improvements, \$688.99; evangelists, \$200.00; district budget, \$262.56; home missions, \$49.62; amount paid to school at Frankfort, \$50.97; foreign missions, \$563.30; Old People's Home, \$52.00; Rescue Home, \$68.80; general budget, \$440.76; cash brought forward, \$41.07; total church offerings, \$5,016.95; Sunday school offerings, \$774.26; Young People's offerings, \$175.45; miscellaneous, \$1,032.56; total receipts, \$5,693.18; total expenditures, \$5,450.40; cash on hands, \$242.78.

Property Statement—Value of church building, \$20,000.00; value of parsonage, \$2,000.00.

Medora, Washington and David Sts.—Pastor, Raymond H. Street. Non-assessable members, 11; assessable members, 16; total additions, 11; total removals, 3; present membership, 27; revivals, 3; professed sanctification, 34; professed regeneration, 54; number of tithers, 10; total services, 213; total calls, 206; prayed for healing, 9; funerals, 14; total subscribers to Advocate, 16; average Sunday school attendance, 85; Young People's enrollment, 17.

Financial Report—Pastor's support, cash, \$400.98; amount of donations, \$174.58; rents, \$96.00; amount paid on improvements, \$155.50; amount paid on local indebtedness, 109; evangelists, \$169.22; district budget, \$59.84; home missions, \$4.09; amount paid to school at Frankfort, \$10.00; foreign missions, \$28.90; Old People's Home, \$5.70; Rescue Home, \$1.60; general budget, \$3.00; cash brought forward, \$21.71; total church offerings, \$979.24; Sunday school offerings, \$105.76; Young People's offerings, \$19.54; total receipts, \$1,104.54; total expenditures, \$1,086.79; cash on hands, \$17.75.

Property Statement—Value of church building, \$300.00; Value of parsonage, \$450.00; local indebtedness, \$203.00.

Merom—Pastor, E. W. Wright. Assessable members, 17; present membership, 17; revivals, 3; professed sanctification, 2; professed regeneration, 2; number of tithers, 16; total services, 86; total calls, 31; prayed for healing, 5; marriages, 2; total subscribers to Advocate, 7; average Sunday school attendance, 18.

Financial Report—Pastor's support, cash, \$271.75; amount of donations, \$8.00; evangelists, \$140.00; district budget, \$55.03; home missions, \$6.12; amount paid to school at Frankfort, \$8.17; foreign missions, \$9.36; Old People's Home, \$8.16; Rescue Home, \$2.00; general budget, \$51.01; to other interests, \$58.00; cash brought forward, \$1.87; total church offerings, \$615.15; Sunday School offerings, \$59.37; total receipts, \$676.39; total expenditures, \$660.22; cash on hands, \$16.17; camp meeting assessment, \$3.00.

Property Statement—Value of church building, \$275.00.

Middletown, 2 miles north of Prairie Creek—Pastor, E. V. Halt. Assessable members, 18; present membership, 54; revivals, 1; professed sanctification, 1; professed regeneration, 1; total services, 126; total calls, 21; prayed for healing, 2; marriages, 2; baptisms, 10; average Sunday school attendance, 39.

Financial Report—Pastor's support, cash, \$583.85; amount paid on improvements, \$2,209.32; evangelists, \$70.00; district budget, \$77.27; home missions, \$14.40; amount paid to school at Frankfort, \$7.70; foreign missions, \$131.13; Old People's Home, \$19.20; general budget, \$46.00; to other interests, \$31.65; amount of cash brought forward, \$9.00; total church offerings, \$3,209.47; Sunday school offerings, \$281.05; total receipts, \$3,490.52; total expenditures, \$3,426.39; cash on hand, \$15.95; camp meeting assessment, \$3.00.

Property Statement—Value of church building, \$3,000.00; local indebtedness, \$900.00.

Michigantown—Pastor, Lonnie Cole. Non-assessable members, 7; assessable members, 41; total additions, 3; total removals, 2; present mem-

bership, 48; revivals, 2; professed sanctification, 14; professed regeneration, 23; total services, 151; total calls, 424; prayed for healing, 18; marriages, 1; funerals, 3; total subscribers to Advocate 11; average Sunday school attendance, 29.

Financial Report—Pastor's support, cash, \$312.48; amount of donations, \$114.50; evangelists, \$78; district budget, \$35.98; home missions, \$7.98; amount paid to school at Frankfort, \$3.19; foreign missions, \$55.43; Old People's Home, \$11.60; Rescue Home, \$8.86; general budget, \$23.64; cash brought forward, \$12.00; total church offerings, \$579.09; Sunday school offerings, \$105.32; miscellaneous, \$21.94; total receipts, \$706.35; total expenditures, \$706.35; cash on hands, \$12.00; camp meeting assessment, \$3.19.

Property Statement—Value of church building, \$1,000.00; value of parsonage, \$2,000.00.

Milton—Pastors, Katie Locke and Esther White. Non-assessable members, 5; assessable members, 15; present membership, 20; revivals, 1; professed sanctification, 10; professed regeneration, 20; total services, 195; total calls, 295; prayed for healing, 15; marriages, 2; funerals, 3; baptisms, 5; total subscribers to Advocate, 4; average Sunday school attendance, 40.

Financial Report—Amount paid on improvements, \$20.00; district budget, \$11.00; Home missions, \$0.50; foreign missions, \$3.50; Old People's Home, \$2.00; Rescue Home, \$0.50; general budget, \$2.50; total church offerings, \$135.00; Sunday School offerings, \$39.25; miscellaneous, \$95.00; total receipts, \$174.25; total expenditures, \$174.25.

Property Statement—Value of church building, \$2,000.00.

Mitchell, 2nd and Frank Sts.—Pastor, Lester L. Henry. Assessable members, 44; total additions, 6; total removals, 6; present membership, 44; revivals, 1; professed sanctification, 11; professed regeneration, 44; number of tithers, 25; total services, 216; total calls, 305; prayed for healing, 77; marriages, 4; funerals, 2; total subscribers to Advocate, 7; average Sunday school attendance, 85.

Financial Report—Pastor's support, cash, \$624.00; amount of donations, \$98.88; rents, \$96.00; amount paid on improvements, \$23.91; evangelists, \$78.25; district budget, \$74.93; home missions, \$14.88; amount paid to school at Frankfort, \$11.15; foreign missions, \$32.57; Old People's Home, \$19.90; Rescue Home, \$0.70; general budget, \$43.59; cash brought forward, \$17.19; total church offerings, \$1,182.38; Sunday school offerings, \$110.29; miscellaneous, \$162.22; total receipts, \$1,292.67; total expenditures, \$1,274.53; cash on hands, \$18.14; camp meeting assessment, \$3.00.

Property Statement—Value of church building, \$2,000.00.

Monon—Pastor, Hascue B. Carter. Non-assessable members, 23; assessable members, 14; total additions, 22; total removals, 9; present membership, 37; revivals, 2; professed sanctification, 12; professed regeneration, 23; number of tithers, 10; total services, 297; total calls, 166; prayed for healing, 19; marriages, 2; total subscribers to Advocate, 7; average Sunday school attendance, 34.

Financial Report—Pastor's support, cash, \$115.67; amount of donations, \$121.46; rents, \$218.50; evangelists, \$121.68; district budget, \$15.30; home missions, \$4.65; amount paid to school at Frankfort, \$2.40; foreign missions, \$31.47; Old People's Home, \$1.41; Rescue Home, \$2.00; general budget, \$13.00; cash brought forward, \$30.94; total church offerings, \$648.45; Sunday school offerings, \$96.31; total receipts, \$775.60; total expenditures, \$773.97; cash on hands, \$1.73; camp meeting assessment, \$1.00.

Morgantown—Pastor, Marvin Jewell. Assessable members, 52; total additions, 4; total removals, 11; present membership, 52; revivals, 3; professed sanctification, 3; professed regeneration, 9; number of tithers, 16; total services, 247; total calls, 226; prayed for healing, 10; marriages, 2; funerals, 2; total subscribers to Advocate, 4; average Sunday school attendance, 56 4/5; Young People's enrollment, 17.

Financial Report—Pastor's support, cash, \$530.49; amount of dona-

tions, \$158.32; rents, \$120.00; amount paid on improvements, \$100.00; evangelists, \$151.22; district budget, \$63.53; home missions, \$24.44; amount paid to school at Frankfort, \$13.28; foreign missions, \$80.94; Old People's Home, \$9.60; Rescue Home, \$5.20; general budget, \$28.52; total church offerings, \$1,230.17; Sunday school offerings, \$110.41; total receipts, \$1,340.58; total expenditures, \$1,278.72; cash on hands, \$61.86; camp meeting assessment, \$3.00.

Property Statement—Value of church building, \$800.00; value of parsonage, \$1,000.00.

Muncie, Fifth and Hackley Sts.—Pastor, Mark Storey. Non-assessable members, 3; assessable members, 83; total additions, 6; total removals, 34; present membership, 86; revivals, 2; professed sanctification, 45; professed regeneration, 34; number of tithers, 50; total services, 247; total calls, 499; prayed for healing, 155; marriages, 10; funerals, 13; total subscribers to Advocate, 14; Young People's enrollment, 28.

Financial Report—Pastor's support, cash, \$1,329.00; amount of donations, \$80.00; amount paid on improvements, \$533.39; amount paid on local indebtedness, \$1,515.00; evangelists, \$201.05; district budget, \$121.26; home missions, \$178.80; amount paid to school at Frankfort, \$19.50; foreign missions, \$178.80; Rescue Home, \$11.00; general budget, \$40.00; cash brought forward, \$32.60; total church offerings, \$2,058.48; Sunday school offerings, \$33.23; Young People's offerings, \$24.49; miscellaneous, \$561.35; total receipts, \$4,781.18; total expenditures, \$4,781.18.

Property Statement—Value of church building, \$5,000.00; value of parsonage, \$7,200.00; local indebtedness, \$3,700.00.

New Albany, 302 Cherry St.—Pastor, I. G. Canary. Non-assessable members, 6; assessable members, 42; total additions, 37; total removals, 3; present membership, 48; revivals, 3; professed sanctification, 54; professed regeneration, 96; number of tithers, 40; total services, 186; total calls, 537; prayed for healing 37; marriages, 1; baptisms, 8; total subscribers to Advocate, 25; average Sunday school attendance, 45; Young People's enrollment, 23.

Financial Report—Pastor's support, cash, \$588.84; amount of donations, \$141.16; rents, \$98.00; amount paid on improvements, \$106.38; evangelists, \$216.72; district budget, \$48.84; home missions, \$8.72; amount paid to school at Frankfort, \$9.97; foreign missions, \$15.31; Old People's Home, \$2.70; Rescue Home, \$3.00; general budget, \$5.00; to other interests, \$164.21; cash brought forward, \$6.15; total church offerings, \$1,113.74; Sunday school offerings, \$127.61; Young People's offerings, \$49.91; miscellaneous, \$166.15; total receipts, \$1,536.07; total expenditures, \$1,354.83; cash on hands, \$181.24; camp meeting assessment, \$3.00.

Property Statement—Value of church building, \$600.00.

New Carlisle—Pastor, Marshall Robbins. Assessable members, 19; total additions, 1; total removals, 3; present membership, 19; revivals, 1; professed sanctification, 5; professed regeneration, 17; number of tithers, 10; total services, 156; total calls, 437; marriages, 1; funerals, 5; average Sunday school attendance, 31.

Financial Report—Pastor's support, cash, \$434.19; amount of donations, \$30.00; rents, \$60.00; evangelists, \$50.00; district budget, \$61.46; home missions, \$10.28; amount paid to school at Frankfort, \$8.50; foreign missions, \$76.45; Old People's Home, \$7.44; general budget, \$15.19; cash brought forward, \$1.37; total church offerings, \$849.92; Sunday School offerings, \$77.89; total receipts, \$927.71; total expenditures, \$887.43; cash on hands, \$40.38; camp meeting assessment, \$5.25.

Property Statement—Value of church building, \$1,000.00.

New Castle—Pastor, O. W. Barnes. Non-assessable members, 2; assessable members, 49; total additions, 13; total removals, 8; present membership, 51; revivals, 2; professed sanctification, 81; professed regeneration, 109; number of tithers, 40; total services, 205; total calls, 436; prayed for healing, 86; marriages, 2; funerals, 2; baptisms, 9; total sub-

scribers to Advocate, 15; average Sunday school attendance, 85 14/32; Young People's enrollment, 48.

Financial Report—Pastor's support, cash, \$688.00; amount of donations, \$358.78; rents, \$278.78; amount paid on improvements, \$410.00; amount paid on local indebtedness, \$470.85; evangelists, \$232.00; district budget, \$175.88; home missions, \$7.56; amount paid to school at Frankfort, \$19.00; foreign missions, \$153.30; Old People's Home, \$10.10; Rescue Home, \$6.70; general budget, \$23.00; to other interests, \$455.82; cash brought forward, \$6.16; total church offerings, \$1,853.61; Sunday school offerings, \$111.34; Young People's offerings, \$12.40; miscellaneous, \$166.04; total receipts, \$2,790.77; total expenditures, \$2,728.38; cash on hands, \$62.39.

Property Statement—Value of church building, \$5,000.00; value of parsonage, \$2,500.00; local indebtedness, \$3,175.45.

Noblesville, 13th and Wayne Sts.—Pastor, Mabel Ribkee. Non-assessable members, 5; assessable members, 22; total additions, 1; present membership, 26; revivals, 2; professed sanctification, 10; professed regeneration, 59; number of tithers, 14; total services, 198; total calls, 300, prayed for healing, 36; marriages, 1; funerals, 1; total subscribers to Advocate, 3; average Sunday school attendance, 45; Young People's enrollment, 15.

Financial Report—Pastor's support, cash, \$413.40; amount of donations, \$124.30; rents, \$1.40; amount paid on improvements, \$1.00; evangelists, \$81.77; district budget, \$60.03; home missions, \$12.40; amount paid to school at Frankfort, \$3.38; foreign missions, \$50.09; Old People's Home, \$7.75; Rescue Home, \$4.76; general budget, \$5.90; to other interests, \$115.44; cash brought forward, \$36.06; total church offerings, \$944.89; Sunday school offerings, \$71.49; Young People's offerings, \$2.89; total receipts, \$1,019.27; total expenditures, \$992.61; cash on hands, \$23.38; camp meeting assessment, \$3.00.

Property Statement—Value of church building, \$2,000.00.

North Vernon, Poplar and Jennings Sts.—Pastor, W. L. Daugherty. Non-assessable members, 2; assessable members, 55; total additions, 19; total removals, 2; present membership, 57; revivals, 3; professed sanctification, 21; professed regeneration, 41; number of tithers, 45; total services, 205; total calls, 418; prayed for healing, 12; marriages, 4; funerals, 2; total subscribers to Advocate, 10; average Sunday school attendance, 71; Young People's enrollment, 34.

Financial Report—Pastor's support, cash, \$464.75; amount of donations, \$106.95; rents, \$120.00; amount paid on improvements, \$10.30; amount paid on local indebtedness, \$169.52; evangelists, \$123.00; district budget, \$49.65; home missions, \$11.38; amount paid to school at Frankfort, \$10.00; foreign missions, \$70.73; Old People's Home, \$9.60; general budget, \$26.08; cash brought forward, \$11.05; total church offerings, \$1,077.22; Sunday school offerings, \$220.40; Young People's offerings, \$20.23; miscellaneous, \$107.38; total receipts, \$1,317.85; total expenditures, \$1,277.21; cash on hands, \$40.64.

Property Statement—Value of church building, \$3,000; value of parsonage, \$1,300.00; local indebtedness, \$880.00.

Norway, R. R. 1, Monticello—Pastor, Wayne Hill. Assessable members, 32; total additions, 9; total removals, 6; present membership, 32; revivals, 2; professed sanctification, 39; professed regeneration, 47; number of tithers, 12; total services, 187; total calls, 51; prayed for healing, 15; funerals, 1; baptisms, 6; total subscribers to Advocate, 12; average Sunday school attendance, 43; Young People's enrollment, 23.

Financial Report—Pastor's support, cash, \$262.70; amount of donations, \$17.30; rents, \$5.00; amount paid on improvements, \$16.58; evangelists, \$98.88; district budget, \$27.98; home missions, \$4.20; amount paid to school at Frankfort, \$9.18; foreign missions, \$48.50; Old People's Home, \$5.90; Rescue Home, \$3.95; general budget, \$0.50; cash brought forward, \$5.50; total church offerings, \$628.98; Sunday school offerings, \$55.66; Young People's offerings, \$15.27; miscellaneous, \$86.41; total re-

ceipts, \$718.06; total expenditures, \$632.02; cash on hands, \$74.94; camp meeting assessment, \$5.00.

Property Statement—Value of church building, \$800.00.

Oaktown—Pastor, Walter Keeney. Non-assessable members, 1; assessable members, 27; total additions, 1; present membership, 28; revivals, 2; professed sanctification, 9; professed regeneration, 38; number of tithers, 14; total services, 309; total calls, 488; prayed for healing, 17; funerals, 4; total subscribers to Advocate, 12; average Sunday school attendance, 47; Young People's enrollment, 28.

Financial Report—Pastor's support, cash, \$434.45; amount of donations, \$115.09; rents, \$112.00; evangelists, \$96.42; district budget, \$59.64; home missions, \$7.12; amount paid to school at Frankfort, \$5.62; foreign missions, \$28.82; Old People's Home, \$2.34; Rescue Home, \$3.10; general budget, \$25.22; to other interests, \$52.74; total church offerings, \$1,070.21; Sunday school offerings, \$94.19; Young People's offerings, \$1.00; total receipts, \$1,070.21; total expenditures, \$1,060.81; cash on hands, \$9.40; camp meeting assessment, \$3.00.

Property Statement—value of church building, \$1,600.00.

Ohio Ridge, R. R., Columbus—Pastor, E. R. Weekly. Assessable members, 20; total additions, 1; present membership, 20; revivals, 1; professed sanctification, 26; professed regeneration, 49; total services, 168; total calls, 210; prayed for healing, 12; marriages, 1; funerals, 3.

Financial Report—Pastor's support, cash, \$324.73; amount of donations, \$23.55; evangelists, \$107.00; district budget, \$62.23; home missions, \$3.00; amount paid to school at Frankfort, \$5.00; Old People's Home, \$3.00; Rescue Home, \$3.00; cash brought forward, \$11.81; total church offerings, \$630.76; camp meeting assessment, \$3.00.

Orleans—Pastor, Moreland Yundt. Assessable members, 23; total removals, 6; present membership, 23; revivals, 1; professed sanctification, 13; professed regeneration, 31; number of tithers, 20; total services, 166; total calls, 196; prayed for healing, 6; marriages, 1; funerals, 3; total subscribers to Advocate, 6; average Sunday school attendance, 43.

Financial Report—Pastor's support, cash, \$544.99; amount of donations, \$34.10; rents, \$96.00; amount paid on improvements, \$200.57; evangelists, \$58.50; district budget, \$59.80; home missions, \$8.10; amount paid to school at Frankfort, \$7.57; foreign missions, \$55.67; Old People's Home, \$10.80; general budget, \$20.85; to other interests, \$72.00; cash brought forward, \$14.45; total church offerings, \$1,052.80; Sunday school offerings, \$50.24; total receipts, \$1,103.04; total expenditures, \$1,094.75; cash on hands, \$8.29.

Paoli—Pastor, Moreland Yundt (six months' report). Non-assessable members, 4; assessable members, 18; total additions, 3; present membership, 22; revivals, 2; professed sanctification, 5; professed regeneration, 19; number of tithers, 22; total services, 89; total calls, 44; prayed for healing, 4; total subscribers to Advocate, 24; average Sunday school attendance, 39.

Financial Report—Pastor's support, cash, \$270.35; amount of donations, \$21.80; amount paid on improvements, \$27.92; evangelists, \$68.80; district budget, \$25.66; home missions, \$10.00; amount paid to school at Frankfort, \$2.00; foreign missions, \$10.28; total church offerings, \$564.85; Sunday school offerings, \$30.44; total receipts, \$564.85; total expenditures, \$525.27; cash on hands, \$39.58.

Richmond, N. W. L. and Ratliff Sts.—Pastors, Edward and Bertha Schoeff. Non-assessable members, 20; assessable members, 30; total additions, 5; total removals, 4; present membership, 50; revivals, 4; professed sanctification, 25; professed regeneration, 71; number of tithers, 25; total services, 226; total calls, 666; prayed for healing, 60; marriages, 1; total subscribers to Advocate, 8; average Sunday school attendance, 62.

Financial Report—Pastor's support, cash, \$954.00; amount of donations, \$165.12; rents, \$303.15; amount paid on improvements, \$205.08; amount paid on local indebtedness, \$82.43; evangelists, \$466.16; district

budget, \$124.57; amount paid to school at Frankfort, \$9.50; foreign missions, \$62.25; Rescue Home, \$11.25; total church offerings, \$2,610.44; Sunday school offerings, \$157.09; miscellaneous, \$388.42; total receipts, \$2,767.53; total expenditures, \$2,765.15; cash on hands, \$2.38.

Property Statement—Value of church building, \$2,500.00; local indebtedness, \$350.00.

Rising Sun, 4th Street—Pastor, Carl Roark. Non-assessable members, 3; assessable members, 20; present membership, 23; revivals, 1; professed sanctification, 3; professed regeneration, 10; number of tithers, 10; total services, 173; total calls, 224; prayed for healing, 10; funerals, 1; baptisms, 2; total subscribers to Advocate, 5; average Sunday school attendance, 30 plus.

Financial Report—Pastor's support, cash, \$336.00; amount of donations, \$30.00; rents, \$147.50; evangelists, \$41.56; district budget, \$62.66; home missions, \$14.50; amount paid to school at Frankfort, \$6.85; foreign missions, \$53.52; Old People's Home, \$10.50; Rescue Home, \$1.05; cash brought forward, \$0.25; total church offerings, \$584.51; Sunday School offerings, \$128.27; miscellaneous, \$379.20; total receipts, \$1,092.23; total expenditures, \$1,078.28; cash on hands, \$13.95; camp meeting assessment, \$3.00.

Property Statement—Value of church building, \$1,000.00.

Rodney, R. R. 1, Westport—Pastor, Robert Stunkel. Total additions, 2; present membership, 18; revivals, 2; professed sanctification, 11; professed regeneration, 25; total services, 244; total calls, 27; prayed for healing, 17; baptisms, 2; average Sunday school attendance, 30.

Financial Report—Pastor's support, cash, \$101.39; amount of donations, \$11.93; amount paid on local indebtedness, \$80.12; total church offerings, \$200.59; Sunday school offerings, \$33.53; total receipts, \$234.02; total expenditures, \$226.41; cash on hands, \$7.71.

Property Statement—Value of church building, \$1,000.00; local indebtedness, \$100.00.

Rushville, Ninth and Oliver Sts.—Pastor, George V. Phares. Non-assessable members, 2; assessable members, 27; total removals, 2; present membership, 29; revivals, 1; professed sanctification, 1; professed regeneration, 7; number of tithers, 10; total services, 112; total calls, 185; prayed for healing, 11; funerals, 2; total subscribers to Advocate, 4; average Sunday school attendance, 31.

Financial Report—Pastor's support, cash, \$259.17; amount of donations, \$45.00; amount paid on local indebtedness, \$242.59; evangelists, \$30.00; district budget, \$36.16; home missions, \$1.58; foreign missions, \$14.83; Old People's Home, \$4.04; Rescue Home, \$1.10; general budget, \$8.03; cash brought forward, \$26.51; total church offerings, \$600.03; Sunday school offerings, \$42.05; total receipts, \$600.03; total expenditures, \$603.04; cash on hands, \$3.01.

Property Statement—Value of church building, \$1000.00.

Sandford—Pastor, Murry Boothe. Assessable members, 15; present membership, 16; revivals, 2; professed sanctification, 10; professed regeneration, 18; number of tithers, 14; total calls, 113; prayed for healing, 27; marriages, 2; baptisms, 4; total subscribers to Advocate, 3; average Sunday school attendance, 33; Young People's enrollment, 10.

Financial Report—Pastor's support, cash, \$289.27; amount of donations, \$72.70; amount paid on improvements, \$30.46; evangelists, \$67.00; district budget, \$47.26; home missions, \$1.80; foreign missions, \$36.74; Old People's Home, \$2.92; Rescue Home, \$2.70; general budget, \$15.00; cash brought forward, \$1.50; total church offerings, \$521.96; Sunday school offerings, \$41.36; Young People's offerings, \$2.26; total receipts, \$563.32; total expenditures, \$563.00; cash on hands, \$0.32.

Property Statement—Value of church building, \$2,000.00.

Scott City, R. R. 1, Fairbanks—Pastor, Robert White. Non-assessable members, 6; assessable members, 40; total additions, 3; present membership, 46; revivals, 2; professed sanctification, 12; professed regeneration 15; number of tithers, 10; total calls, 165; prayed for healing,

10; marriages, 1; funerals, 3; total subscribers to Advocate, 6; average Sunday school attendance, 43.

Financial Report—Pastor's support, cash, \$464.90; amount of donations, \$27.40; interest, \$27.84; amount paid on local indebtedness, \$116.91; evangelists, \$102.53; district budget, \$63.80; home missions, \$7.12; foreign missions, \$43.80; Old People's Home, \$9.41; Rescue Home, \$2.10; general budget, \$15.60; cash brought forward, \$17.07; total church offerings, \$970.30; Sunday school offerings, \$43.69; total receipts, \$1,031.06; total expenditures, \$993.10; cash on hands, \$38.01; camp meeting assessment, \$3.00.

Property Statement—Value of church building, \$1,000.00; value of parsonage, \$500.00; local indebtedness, \$343.09.

Seelyville—Pastor, Naomi F. Shumaker. Non-assessable members, 28; assessable members, 15; total additions, 2; present membership, 33; revivals, 1; professed sanctification, 6; professed regeneration, 7; number of tithers, 12; total services, 115; total calls, 454; prayed for healing, 54; funerals, 3; total subscribers to Advocate, 3; average Sunday school attendance, 33.

Financial Report—Pastor's support, cash, \$332.55; amount of donations, \$79.11; amount paid on improvements, \$89.21; amount paid on local indebtedness, \$1.35; evangelists, \$50.00; district budget, \$44.40; home missions, \$12.50; amount paid to school at Frankfort, \$6.66; foreign missions, \$48.36; Old People's Home, \$7.50; Rescue Home, \$2.77; general budget, \$15.00; cash brought forward, \$7.51; total church offerings, \$747.34; Sunday school offerings, \$61.59; miscellaneous, \$137.06; total receipts, \$808.93; total expenditures, \$761.79; cash on hands, \$9.63; camp meeting assessment, \$3.00.

Property Statement—Value of church building, \$1,500.00.

Shelburn—Pastor, Pearl Dean. Non-assessable members, 17; assessable members, 19; total removals, 1; present membership, 37; revivals 2; professed sanctification, 5; professed regeneration, 20; number of tithers, 15; total services, 230; total calls, 203; prayed for healing, 10; marriages, 1; funerals, 4; baptisms, 1; total subscribers to Advocate, 5; average Sunday school attendance, 62.

Financial Report—Pastor's support, cash, \$335.00; amount of donations, \$49.70; rents, \$100.00; evangelists, \$79.07; district budget, \$22.30; home missions, \$8.00; amount paid to school at Frankfort, \$7.50; foreign missions, \$24.06; Old People's Home, \$7.68; Rescue Home, \$2.00; general budget, \$6.00; to other interests, \$150.20; cash brought forward, \$10.87; total church offerings, \$640.77; Sunday school offerings, \$133.50; total receipts, \$774.27; total expenditures, \$741.81; cash on hands, \$32.46.

Shelbyville, 224 E. Pennsylvania St.—Pastor, Rev. C. W. McHenry. Assessable members, 53; total additions, 2; total removals, 20; present membership, 53; revivals, 3; professed sanctification, 52; professed regeneration, 75; number of tithers, 43; total services, 229; total calls, 423; prayed for healing, 61; marriages, 1; funerals, 7; total subscribers to Advocate, 6; average Sunday school attendance, 78; Young People's enrollment, 39.

Financial Report—Pastor's support, cash, \$780.00; amount of donations, \$36.50; rents, \$150.00; amount paid on improvements, \$856.50; amount paid on local indebtedness, \$123.00; evangelists, \$165.00; district budget, \$136.11; home missions, \$4.41; amount paid to school at Frankfort, \$1.00; foreign missions, \$41.00; Old People's Home, \$10.48; Rescue Home, \$10.40; general budget, \$50.87; to other interests, \$212.49; cash brought forward, \$30.99; total church offerings, \$1,548.86; Sunday school offerings, \$95.29; Young People's offerings, \$14.73; total receipts, \$1,659.88; total expenditures, \$1,603.82; cash on hands, \$56.06; camp meeting assessment, \$3.00.

Property Statement—Value of church building \$5,000.00; local indebtedness, \$344.75.

Sheridan—Pastor, A. V. Skinner. Non-assessable members, 8; revivals, 3; professed sanctification, 4; professed regeneration, 6; total

services, 122; total calls, 72; prayed for healing, 6; total subscribers to Advocate, 2; average Sunday school attendance, 16.

Financial Report—Pastor's support, cash, \$20.00; amount of donations, \$2.00; amount paid on improvements, \$12.00; evangelists, \$35.33; amount paid to school at Frankfort (donation), \$4.50; foreign missions, \$4.10; total church offerings, \$71.43; Sunday school offerings, \$25.43; total receipts, \$25.43; total expenditures, \$24.73; cash on hands, \$1.10.

Property Statement—Value of church building, \$500.00.

Shoals—Pastors, Lindley and Beulah Arnett. Non-assessable members, 15; assessable members, 32; total additions, 6; total removals, 6; present membership, 47; revivals, 2; professed sanctification, 20; professed regeneration, 59; number of tithers, 26; total services, 166; total calls, 355; marriages, 10; funerals, 2; total subscribers to Advocate, 5; average Sunday school attendance, 84 plus; Young People's enrollment, 16.

Financial Report—Pastor's support, cash, \$624.00; amount of donations, \$100.00; amount paid on improvements, \$107.38; amount paid on local indebtedness, \$90.00; evangelists, \$112.75; district budget, \$125.58; home missions, \$2.70; amount paid to school at Frankfort, \$16.58; foreign missions, \$60.29; Old People's Home, \$20.63; general budget, \$61.19; cash brought forward, \$85.59; total church offerings, \$1,542.96; Sunday school offerings, \$99.78; Young People's offerings, \$77.30; miscellaneous, \$215.41; total receipts, \$1,805.63; total expenditures, \$1,600.19; cash on hands, \$205.44; camp meeting assessment, \$3.00.

Property Statement—Value of church building, \$2,000.00; value of parsonage, \$2,000.00; local indebtedness, \$225.00.

Somerville—Pastor, Bonnie B. Bradfield. Non-assessable members, 5; assessable members, 13; total additions, 7; total removals, 11; present membership, 18; revivals, 2; professed sanctification, 18; professed regeneration, 33; number of tithers, 10; total services, 285; total calls, 163; prayed for healing, 25; baptisms, 1; total subscribers, to Advocate, 8; average Sunday school attendance, 60; Young People's enrollment, 13.

Financial Report—Pastor's support cash, \$80.47; amount of donations, \$37.35; amount paid on improvements, \$407.05; amount paid on local indebtedness, \$70.00; evangelists, \$52.06; district budget, \$20.14; home missions, \$6.83; amount paid to school at Frankfort, \$5.30; foreign missions, \$27.34; Old People's Home, \$6.86; general budget, \$1.96; to other interests, \$105.19; cash brought forward, \$117.05; total church offerings, \$356.35; Sunday school offerings, \$312.91; Young People's offerings, \$38.00; total receipts, \$823.31; total expenditures, \$820.55; cash on hands, \$2.76.

Property Statement—Value of church building, \$2,700.00; local indebtedness, \$750.00.

Spearsville—Pastor, Ralph Napier. Total additions, 1; present membership, 11; revivals, 1; professed sanctification, 9; professed regeneration, 7; number of tithers, 7; total services, 198; total calls, 15; prayed for healing, 10; funerals, 1; average Sunday school attendance, 40.

Financial Report—Pastor's support, cash, \$92.04; amount of donations, \$78.32; evangelists, \$77.89; district budget, \$16.21; home missions, \$1.00; foreign missions, \$4.17; Old People's Home, \$1.00; cash brought forward, \$1.60; total church offerings, \$245.78; miscellaneous, \$129.30; total receipts, \$321.48; total expenditures, \$292.28; cash on hands, \$29.20.

South Bend, 1111 E. Indiana Ave.—Pastor, Gilbert Noel. Assessable members, 38; total additions, 6; total removals, 8; present membership, 38; professed sanctification, 17; professed regeneration, 50; number of tithers, 32; total services, 185; total calls, 437; prayed for healing, 30; marriages, 1; total subscribers to Advocate, 10; average Sunday school attendance, 101; Young People's enrollment, 31.

Financial Report—Pastor's support, cash, \$1,120.00; amount of donations, \$185.71; rents, \$240.00; amount paid on improvements, \$296.80; amount paid on local indebtedness, \$216.27; evangelists, \$172.23; district budget, \$199.79; home missions, \$21.23; amount paid to school at Frank-

fort, \$32.01; foreign missions, \$87.44; Old People's Home, \$15.84; Rescue Home, \$3.46; general budget, \$35.28; cash brought forward, \$13.84; total church offerings, \$2,680.78; Sunday school offerings, \$329.85; Young People's offerings, \$43.86; miscellaneous, \$404.91; total receipts, \$3,068.33; total expenditures, \$2,964.70; cash on hands, \$103.63; camp meeting assessment, \$3.00.

Property Statement—Value of church building, \$4,000.00; value of parsonage, \$1,500.00; local indebtedness, \$1,600.00.

Sullivan—Pastor, D. M. Royer. Present membership, 20; revivals, 2; professed sanctification, 8; professed regeneration, 10; number of tithers, 6; total services, 205; total calls, 248; prayed for healing, 10; total subscribers to Advocate, 6; average Sunday school attendance, 30.

Financial Report—Pastor's support, cash, \$165.18; amount of donations, \$20.00; rents, \$84.00; amount paid on improvements, \$10.00; evangelists, \$59.28; district budget, \$16.85; home missions, \$15.00; amount paid to school at Frankfort, \$4.00; foreign missions, \$20.07; Old People's Home, \$5.63; cash brought forward, \$2.00; total church offerings, \$402.01; Sunday school offerings, \$55.44; total receipts, \$457.45; total expenditures, \$440.69; cash on hands, \$16.76; camp meeting assessment, \$8.50.

Property Statement—Value of church building, \$1,500.00; value of parsonage, \$700.00.

Terre Haute, Greenwood St., 2500 Greenwood St.—Pastor, J. W. Preusz. Present membership, 36; revivals, 2; professed sanctification, 11; professed regeneration, 22; number of tithers, 18; total services, 188; total calls, 400; funerals, 4; average Sunday school attendance, 82.

Financial Report—Pastor's support, cash, \$806.00; amount of donations, \$53.59; rents, \$132.00; amount paid on improvements, \$38.88; evangelists, \$126.91; district budget, \$91.18; home missions, \$13.64; amount paid to school at Frankfort, \$13.21; foreign missions, \$39.30; Old People's Home, \$13.58; cash brought forward, \$0.06; total church offerings, \$1,516.59; Sunday school offerings, \$201.31; miscellaneous, \$116.99; total receipts, \$1,719.90; total expenditures, \$1,627.60; cash on hands, \$92.29.

Property Statement—Value of church building, \$2,000.00.

Terre Haute, Hulman St., 2000 Hulman St.—Pastor, Angus R. Jeffers. Non-assessable members, 12; assessable members, 86; total additions, 9; total removals, 4; present membership, 98; revivals, 2; professed sanctification, 23; professed regeneration, 56; number of tithers, 32; total services, 407; total calls, 550; prayed for healing, 170; marriages, 9; funerals, 6; baptisms, 2; total subscribers to Advocate, 30; average Sunday school attendance, 125; Young People's enrollment, 32.

Financial Report—Pastor's support, cash, \$1,430.00; amount of donations, \$33.25; amount paid on improvements, \$47.45; evangelists, \$208.00; district budget, \$264.54; home missions, \$35.00; foreign missions, \$253.71; Old People's Home, \$45.13; Rescue Home, \$10.00; general budget, \$108.27; cash brought forward, \$147.51; total church offerings, \$3,014.03; Sunday school offerings, \$486.39; Young People's offerings, \$26.92; miscellaneous, \$97.42; total receipts, \$3,712.07; total expenditures, \$3,432.29; cash on hands, \$339.78; camp meeting assessment, \$3.00.

Property Statement—Value of church building, \$4,500.00; value of parsonage, \$4,000.00.

Terre Haute, Sixth Ave., 1120 Sixth Ave.—Pastor, G. N. Newton. Assessable members, 45; total additions, 8; total removals, 13; present membership, 45; revivals, 2; professed sanctification, 24; professed regeneration, 40; number of tithers, 30; total services, 216; total calls, 641; prayed for healing, 28; marriages, 3; funerals, 1; total subscribers to Advocate, 3; average Sunday school attendance, 50; Young People's enrollment, 24.

Financial Report—Pastor's support, cash, \$805.00; amount of donations, \$40.00; amount paid on local indebtedness, \$267.00; evangelists, \$78.23; district budget, \$8.00; home missions, \$1.55; foreign missions, \$93.19; Old People's Home, \$8.80; cash brought forward, \$5.37; total church offerings, \$1,653.97; Sunday school offerings, \$84.56; Young Peo-

ple's offerings, \$39.71; miscellaneous, \$276.31; total receipts, \$1,778.24; total expenditures, \$1,677.50; cash on hands, \$100.74.

Property Statement—Value of church building, \$1,500.00; value of parsonage, \$1,000.00; local indebtedness, \$850.00.

Terre Haute, Twelve Points, 2439 N. 14½ St.—Pastor, L. I. Cooley. Non-assessable members, 6; assessable members, 15; total additions, 2; total removals, 3; present membership, 21; revivals, 3; professed sanctification, 24; professed regeneration, 76; number of tithers, 5; total services, 239; total calls, 1,133; prayed for healing, 278; funerals, 5; total subscribers to Advocate, 11; average Sunday school attendance, 39; Young People's enrollment, average attendance, 22.

Financial Report—Pastor's support, cash, \$142.49; amount of donations, \$26.00; gifts, \$325.00; amount paid on improvements, \$90.79; evangelists, \$93.16; amount paid to school at Frankfort, \$0.50; foreign missions, \$29.04; Rescue Home, \$1.10; to other interests, \$79.77; total church offerings, \$436.65; Sunday school offerings, \$69.45; Young People's offerings, \$4.05; total receipts, \$510.15; total expenditures, \$507.30; cash on hands, \$2.85.

Terre Haute, West, 15 S. 8th St.—Pastor, Jesse Hayhurst. Non-assessable members, 17; assessable members, 71; total additions, 24; total removals, 6; present membership, 91; revivals, 2; professed sanctification, 17; professed regeneration, 34; number of tithers, 50; total services, 235; total calls, 700; prayed for healing, 146; funerals, 5; average Sunday school attendance, 115.

Financial Report—Pastor's support, cash, \$1,060.00; amount of donations, \$128.14; rents, \$123.50; amount paid on improvements, \$493.34; evangelists, \$80.00; district budget, \$186.98; home missions, \$14.83; amount paid to school at Frankfort, \$1.70; foreign missions, \$79.60; Old People's Home, \$10.02; Rescue Home, \$3.85; general budget, \$112.59; cash brought forward, \$0.22; total church offerings, \$2,817.38; Sunday school offerings, \$250.80; miscellaneous, \$290.74; total receipts, \$2,817.38 total expenditures, \$2,696.56; cash on hands, \$120.82; camp meeting assessment, \$3.00.

Property Statement—Value of church building, \$2,500.00.

Tipton, 430 Douglas St.—Pastor, F. B. Dunn. Total additions, 5; total removals, 8; present membership, 63; revivals, 2; professed sanctification, 25; professed regeneration, 86; number of tithers, 45; total services, 138; total calls, 575; prayed for healing, 23; marriages, 4; funerals, 6; total subscribers to Advocate, 25; average Sunday school attendance, 161; Young People's enrollment, 35.

Financial Report—Pastor's support, cash, \$884.63; amount of donations, \$140.57; rents, \$211.00; amount paid on improvements, \$252.14; amount paid on local indebtedness, \$332.37; evangelists, \$210.00; district budget, \$129.22; home missions, \$22.92; amount paid to school at Frankfort, \$31.63; foreign missions, \$140.17; Old People's Home, \$30.56; Rescue Home, \$14.62; general budget, \$67.76; to other interests, \$197.50; cash brought forward, \$38.27; total church offerings, \$2,473.72; Sunday school offerings, \$176.85; Young People's offerings, \$25.65; total receipts, \$2,714.49; total expenditures, \$2,501.25; cash on hands, \$213.44; camp meeting assessment, \$3.00.

Property Statement—Value of church building, \$6,000.00; value of parsonage, \$3,000.00; local indebtedness, \$1,181.00.

Twin Oaks, 3½ miles N. E. of Petersburg—Pastor, E. C. Jones. Non-assessable members, 1; assessable members, 40; total additions, 5; total removals, 3; present membership, 41; revivals, 2; professed sanctification, 13; professed regeneration, 22; number of tithers, 13; total services, 188; total calls, 307; prayed for healing, 13; marriages, 1; funerals, 2; total subscribers to Advocate, 14; average Sunday school attendance, 90; Young People's enrollment, 12.

Financial Report—Pastor's support, cash, \$314.48; amount of donations, \$120.06; amount paid on improvements, \$11.95; amount paid on local indebtedness, \$35.70; evangelists, \$52.20; district budget, \$36.99;

home missions, \$18.74; amount paid to school at Frankfort, \$2.57; foreign missions, \$36.63; Old People's Home, \$10.73; general budget, \$8.10; to other interests, \$56.84; cash brought forward, \$1.69; total church offerings, \$584.57; Sunday school offerings, \$153.25; total receipts, \$737.82; total expenditures, \$737.31; cash on hands, \$0.51.

Property Statement—Value of church building, \$1,600.00; value of parsonage, \$1,000.00; local indebtedness, \$130.00.

Tyner—Pastors, James and Grace McCrory. Non-assessable members, 8; assessable members, 33; total additions, 1; total removals, 3; present membership, 41; revivals, 3; professed sanctification, 11; professed regeneration, 34; number of tithers, 16; total services, 201; total calls, 584; prayed for healing, 26; funerals, 1; total subscribers to Advocate, 9; average Sunday school attendance, 32; Young People's enrollment, 11.

Financial Report—Pastor's support, cash, \$600.00; amount of donations, \$74.70; amount paid on improvements, \$8.86; evangelists, \$73.89; district budget, \$58.70; home missions, \$3.36; amount paid to school at Frankfort, \$6.15; foreign missions, \$22.48; Old People's Home, \$2.25; Rescue Home, \$1.00; general budget, \$11.00; total church offerings, \$946.79; Sunday school offerings, \$71.60; Young People's offerings, \$17.54; total receipts, \$975.93; total expenditures, \$939.00; cash on hands, \$36.93; camp meeting assessment, \$2.00.

Property Statement—Value of church building, \$1,500.00; value of parsonage, \$1,000.00.

Versailles—Pastor, Harold Mason. Non-assessable members, 6; assessable members, 24; total additions, 9; total removals, 5; present membership, 30; revivals, 1; professed sanctification, 14; professed regeneration, 36; number of tithers, 20; total services, 78; total calls, 82; prayed for healing, 12; total subscribers to Advocate, 5; average Sunday school attendance, 25.

Financial Report—Pastor's support, cash, \$395.60; amount of donations, \$49.29; rents, \$15.00; amount paid on improvements, \$25.00; evangelists, \$44.50; district budget, \$44.26; home missions, \$4.88; amount paid to school at Frankfort, \$9.00; foreign missions, \$28.18; Old People's Home, \$3.96; Rescue Home, \$1.35; general budget, \$3.80; Sunday school offerings, \$29.51; total expenditures, \$651.93.

Property Statement—Value of church building, \$600.00.

Vincennes—Pastor, V. E. Tanksley. Assessable members, 27; total removals, 6; present membership, 27; revivals, 3; professed sanctification, 19; professed regeneration, 60; number of tithers, 11; total services, 134; total calls, 330; prayed for healing, 39; marriages, 5; funerals, 2; total subscribers to Advocate, 11; average Sunday school attendance, 63; Young People's enrollment, 20;

Financial Report—Pastor's support, cash, \$466.44; amount of donations, \$80.00; amount paid on improvements, \$50.00; amount paid on local indebtedness, \$252.13; evangelists, \$76.58; district budget, \$5.00; home missions, \$6.00; amount paid to school at Frankfort, \$1.50; foreign missions, \$6.00; general budget, \$18.50; total church offerings, \$677.94; Sunday school offerings, \$64.16; Young People's offerings, \$4.60; miscellaneous, \$76.58; total receipts, \$823.02; total expenditures, \$823.02.

Property Statement—Value of church building, \$1,000.00; value of parsonage, \$800.00; local indebtedness, \$1,320.57.

Wabash, Washington and Indiana Sts.—Pastor, R. H. Smith. Non-assessable members, 13; assessable members, 33; total additions, 6; total removals, 2; present membership, 46; revivals, 3; professed sanctification, 87; professed regeneration, 178; number of tithers, 33; total services, 292; total calls, 1,169; prayed with for healing, 208; marriages, 1; funerals, 5; total subscribers to Advocate, 31; average Sunday school attendance, 105; Young People's Society enrollment, 27.

Financial Report—Pastor's support, cash, \$864.00; donations, \$177.18; rents, \$110.00; amount paid on improvements, \$60.00; amount paid on local indebtedness, \$134.00; evangelists, \$333.92; district budget, \$71.76;

home missions, \$6.00; foreign missions, \$39.41; Old People's Home, \$10.00; amount of cash brought forward, \$16.79; total church offerings, \$1,746.06; Sunday school offerings, \$248.34; Young People's offerings, \$66.44; miscellaneous, \$206.11; total receipts, \$2,060.84; total expenditures, \$2,039.62; cash on hands, \$21.22; camp meeting assessment, \$3.00.

Property Statement—Value of church building, \$2,000.00; value of parsonage, \$2,500.00; local indebtedness, \$300.00.

Walkerton—Pastor, Clarence Jackson. Assessable members, 20; present membership, 20; revivals, 2; professed sanctification, 12; professed regeneration, 23; number of tithers, 7; total services, 163; total calls, 123; prayed for healing, 6; marriages, 4; funerals, 1; total subscribers to Advocate, 7; average Sunday school attendance, 39.

Financial Report—Pastor's support, cash, \$274.66; amount of donations, \$29.21; rents, \$58.51; amount paid on improvements, \$20.13; amount paid on local indebtedness, \$290.00; evangelists, \$84.07; district budget, \$45.59; home missions, \$19.80; amount paid to school at Frankfort, \$8.24; foreign missions, \$40.42; Old People's Home, \$2.03; Rescue Home, \$0.20; general budget, \$0.46; to other interests, \$36.64; cash brought forward, \$99.02; total church offerings, \$922.57; Sunday school offerings, \$44.23; total receipts, \$1,065.82; total expenditures, \$1,014.53; cash on hands, \$51.29; camp meeting assessment, 3.

Property Statement—Value of church building, \$2,200.00; local indebtedness, \$766.00.

Washington—Pastor, Wilkes Ragsdale. Assessable members, 22; total additions, 2; total removals, 3; present membership, 22; revivals, 3; professed sanctification, 21; professed regeneration, 36; number of tithers, 10; total services, 221; total calls, 249; prayed for healing, 8; marriages, 1; total subscribers to Advocate, 17; average Sunday school attendance, 41.

Financial Report—Pastor's support, cash, \$304.51; amount of donations, \$114.65; rents, \$108.00; evangelists, \$119.39; district budget, \$31.16; home missions, \$14.00; amount paid to school at Frankfort, \$11.00; foreign missions, \$51.68; Old People's Home, \$7.00; Rescue Home, \$4.00; general budget, \$7.00; cash brought forward, \$2.45; total church offerings \$627.89; Sunday school offerings, \$69.25; total receipts, \$97.14; total expenditures, \$691.83; cash on hands, \$5.31.

Westport—Pastor, Irene Steger. Non-assessable members, 16; assessable members, 83; total additions, 4; total removals, 7; present membership, 99; revivals, 1; professed sanctification, 40; professed regeneration, 35; total services, 176; prayed for healing, 40; total subscribers to Advocate, 16; average Sunday school attendance, 69.

Financial Report—Pastor's support, cash, \$703.37; amount of donations, \$142.20; rents, \$69.00; amount paid on improvements, \$314.15; amount paid on local indebtedness, \$66.00; evangelists, \$95.12; district budget, \$69.00; home missions, \$90.00; amount paid to school at Frankfort, \$17.40; foreign missions, \$69.15; Old People's Home, \$11.00; general budget, \$3.00; cash brought forward, \$5.96; total church offerings, \$1,807.05; Sunday school offerings, \$133.26; miscellaneous, \$247.63; total receipts, \$1,920.31; total expenditures, \$1,897.02; cash on hands, \$23.00.

Property Statement—Value of church building, \$1,000.00; value of parsonage, \$700.00; local indebtedness, \$218.00.

Winchester, E. Short St.—Pastor, Vern A. Leonard. Assessable members, 24; total additions, 5; present membership, 24; revivals, 1; professed sanctification, 8; professed regeneration, 20; number of tithers, 17; total services, 173; total calls, 86; prayed for healing, 26; funerals, 2; baptisms, 5; total subscribers to Advocate, 31; average Sunday school attendance, 51; Young People's enrollment, 25.

Financial Report—Pastor's support, cash, \$424.00; amount of donations, \$82.55; rents, \$191.21; amount paid on improvements, \$1,308.49; amount paid on local indebtedness, \$825.00; evangelists, \$108.83; district budget, \$89.33; home missions, \$6.33; amount paid to school at Frankfort, \$14.60; foreign missions, \$91.74; Old People's Home \$8.45; Rescue

Home, \$5.73; general budget, \$18.85; to other interests, \$8.52; cash brought forward, \$0.01; total church offerings, \$1,093.30; Sunday school offerings, \$134.26; Young People's offerings, \$57.33; miscellaneous, \$130.60; total receipts, \$4,116.22; total expenditures, \$3,385.25; cash on hands, \$730.97; camp meeting assessment, \$5.21.

Property Statement—Value of church building, \$10,000.00; local indebtedness, \$2,600.00.

Windfall—Pastor, Lee Goins. Non-assessable members, 5; assessable members, 24; total additions, 8; present membership, 29; revivals, 3; professed sanctification, 16; professed regeneration, 20; number of tithers, 5; total services, 160; total calls, 255; prayed for healing, 65; funerals, 1; baptisms, 1; total subscribers to Advocate, 5; average Sunday school attendance, 35.

Financial Report—Pastor's support, cash, \$84.85; amount of donations, \$3.12; amount paid on improvements, \$220.00; amount paid on local indebtedness, \$375.00; evangelists, \$216.00; home missions, \$5.68; amount paid to school at Frankfort, \$6.00; foreign missions, \$42.28; cash brought forward, \$13.63; total church offerings, \$1,022.62; Sunday school offerings, \$60.88; miscellaneous, \$60.90; total receipts, \$1,083.50; total expenditures, \$1,058.05; cash on hands, \$25.45.

Property Statement—Value of church building, \$2,500.00; local indebtedness, \$365.00.

Wheatland—Pastor, S. V. Repogle. Assessable members, 17; total additions, 1; total removals, 1; present membership, 17; revivals, 2; professed sanctification, 7; professed regeneration, 11; number of tithers, 17; total services, 215; total calls, 489; prayed for healing, 12; total subscribers to Advocate, 11; average Sunday school attendance, 45.

Financial Report—Pastor's support, cash, \$284.00; amount of donations, \$373.90; rents, \$70.00; amount paid on improvements, \$60.07; amount paid on local indebtedness, \$120.00; evangelists, \$86.31; district budget, \$18.54; home missions, \$5.40; amount paid to school at Frankfort, \$5.50; foreign missions, \$34.38; Old People's Home, \$2.30; Rescue Home, \$1.20; general budget, \$5.00; total church offerings, \$582.34; Sunday school offerings, \$282.70; total receipts, \$750.47; total expenditures, \$724.35; cash on hands, \$26.12; camp meeting assessment, \$3.00.

Property Statement—Value of parsonage, \$500.00; local indebtedness, \$3.30.

	Sermons Preached	Calls	Revivals in P. H. Church	Total Revivals	Seeking Regeneration	Seeking Sanctification	Children Dedicated	Anointed for Healing	Marriages	Funerals	Advocate Subscriptions	\$ Support	Miles Traveled
Ross H. Funkhouser	12	25	23	2	5	\$ 2.00
Lorene E. Crowder	9	12	7	24.35	1,020
Virginia Hughes Young	13	10	2	3	15.05
J. M. Burcham and wife	109	213	2	3	124	28	1	16	518.51	1,548
Willis Cheesman	10	5	25.00
C. G. Taylor	375	1	2	50.00
Paul W. Ragsdale	14	63	10	1	1	15.50
Vard Van Briggie	55	3	3	21	38	5	1	861.88	868
Alice M. Hart	16	1
W. E. Clark	20	250	1	86	70	100	2,200.00	30,000
Leota Clark	150	250	1	300	200	125	3	2,200.00	30,000
Oye Butler	3	77	1	19
Raph E. Benjamin	2	16	1	9	2.00	325
Anna Hines	23	38	2	2	12	4	18	1	2.00
Hazel Rees	21	28	1	5.00	250
Jennie M. Kable	5	15	6	1
David Stewart	25	75	24	30	80	1
C. H. Corts	143	40	1	70	57	18	4	1	304.00	9,890
Ray Burrress	14	50	2	5
H. A. Shepherd	15	2	10	5	1	108.00	280
Paul R. McNeely	3	6030	30
Virginia Kelley	4	11	2	4	1.00	30
Georgia Tomey	18	30	4	5	16	1	2	122.00	1,278
Adam Schwing	9	30	1	5	1,500
W. T. Dunn	5	6	2

Laura Chenoweth	9	20							2	1				
Robert P. Malone	12	9			3	1		2	1				3.90	
Fred Clevenger	147	145	6	8	81	41		28					441.45	2,000
Joseph Glenn	7	4			1			2						
Will Rice	220	186	2	5	86	12	2	46	1	1	3		32.90	11,960
Elsie Bradley	1	5												
C. A. Hughes	19	20	1	1	2	2		4					10.00	520
Dudley White	1	40						10						
Hattie A. Dunkelberger	7	13												
Katherine Inman	4	15												
Vern M. Baldwin	3	17									1			
Ellen D. Roark	12	50		1	1	3		2					5.00	
Helen Hammer	2	50						3			11			
Frank Youngman	12	14			1			3						
Joseph T. Thomas	30	25	2	2	21	10		3					117.10	1,089
Homer Porter	49	83	1	2	28	20		33		6			23.00	
Mrs. W. A. Frye	3	829						183	1					
Robert Ruddick	8	33						40	1				.75	262
Loretta Baughman	16				3	2		8						
Wm. E. Bradley	5	5			2				1				13.00	
Wilbur Hamilton	23	22						11						
Oran W. Spencer	20	100			20	10	4	25			2		5.00	1,500
Mary Good	2										1			
Howard B. Howl	22	47		1	6	3		10					7.31	1,500
Frank Brown	6	8						4						
Ralph Hamilton	40	60			13	2		75						3,000
E. L. Jackson	60	33		2	4	3	10	2					107.28	
Edgar Poe	84	60	1	3	28	12		22						
Maurice G. Cole	27	17	1	1	2	2		6	2					800
J. W. Pottenger	10	26			3	1		4						
Mrs. Edna Murphy		243						50						
Wm. and Imogene McFarlin	290	40	14	14	295	133		15					768.83	5,172
Thomas Porter	120	40	4	6	450	126		78					276.00	2,500
Lillie E. Moore	9				2			6	1				2.20	

Sam Moore	14	2	2	1	1.29
Pearly Jacobs	45	333	1	1	13	3	1	12	1	50.00	11,988
James Hertel	361	13	20	163	107	18	2	1,299.72	9,460
Loyd Montgomery	251	14	14	281	852.56	3,000
Raymond G. Taylor	63	41	9	6	7	21.50	900
Francis Porter	50	40	2	25	10	8	1	29.50
Jack Donovan	325	10	16	737	1	115	25	1,398.62	7,138
W. G. Bogue	1	5	1	1	500
Floyd W. Clark	33	8	1	2	35	2	5	18.81	330
Orval Smith	18	45	5	3	5
Donald Pownell	8	3	4	3
Carl Riden	11	14	4	5
J. H. Sibrel	25	58	53	85.33
Carrie G. Gick	82	150	2	2	12	1	270.00	3,235
Lena Bate	8	10	20	622.16	13,000
William G. Shroyer	61	76	2	2	29	11	11	1	1	106.25	1,176
E. L. Jackson	59	33	2	4	3	10	2	107.28
Roy L. Hill	220	70	6	11	170	70	60	8	620.00	8,000
Samuel E. Clevenger	80	50	1	25	10	5	2	2	125.00	3,500
John W. Williams	15	4	1	1
Grant Wright	110	10	1	1	2	1	2	100
Margaret Hunt	4
Flora Jones	89	20	10	94.64	2,007
Fred Bates	17	10	10	6	100
Wilbert T. McCrory	173	5	10	145	94	41	5	4	520.00	3,420
John Kennedy	8	37	40	4
Luna Leab	47	88	5	33	15	329.60
Grace Hamilton	8	140	3	3	30
Floyd M. Gookins	9	81	1	1	20	2.65
E. W. Ketchum	2	27	6	1
Flo E. Andrews	3	17	31	12	14
Augusta Lockman	1	12	2
Lela Jeffers	5	100	25
Edna Barnes	13	122	11	2	1	25	15.00

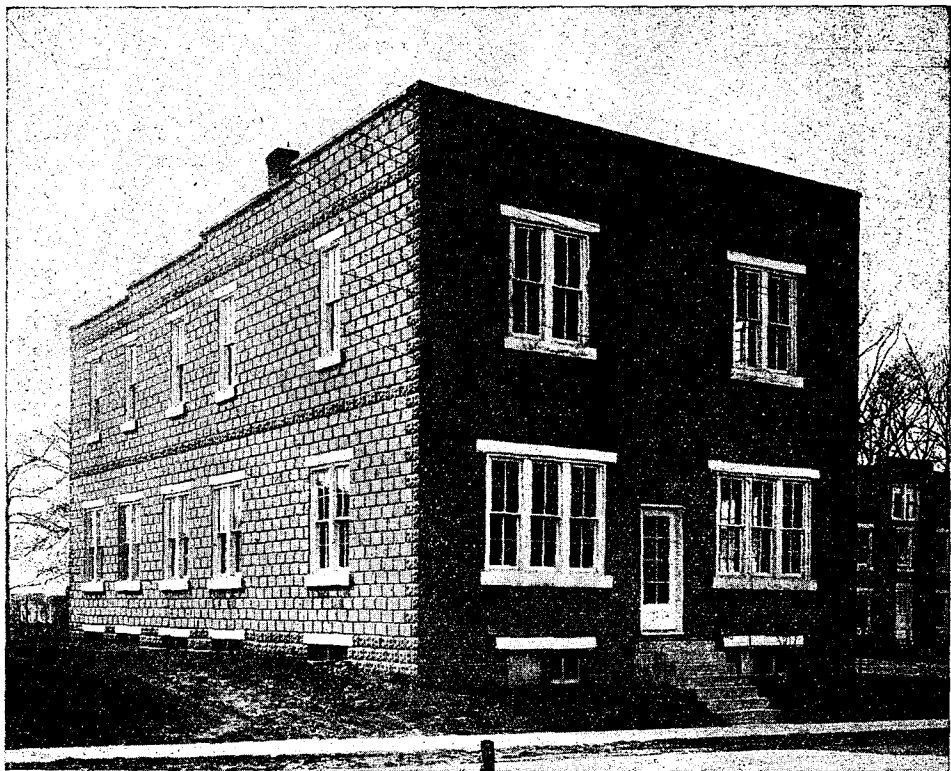
Wm. S. Dean	148		4	7	136	54		11				455.75	2,190
Naomi Clevenger	197		3	8	61	33	2	15				525.00	4,471
Garnet Jewell	25	30	2	3	15	10	2	20	3	5		175.00	500
Herschel Hughes	22				6	4		4				80.00	
Albert Holcomb	12				3	1			3			27.00	
Nannie Hunter	105	19			8	3						220.94	
Lawrence Wade	280			15	290							1,222.75	16,000
Elmer W. Grossman	7	2			1	2		1					600
Herbert C. Dotson	1	2							1	1			
Ruby Parr	9	7						2					
Totals	5361	5196	120	205	3798	1287	34	1717	27	36	60	\$17,546.66	200,737
Darwin Cromer	29	12								1		31.35	760
Elton V. Call	25	10	2	2	17	6						42.84	1,086
J. E. Billman	191		5	9	140	40	13	45		2		498.56	5,602
Plen Smith	31			1	22	20		10	2	1		500.00	
Frank Eakins	2	6						20		1			
Cecil Kline	4	15											114
Estella Henderson	6	30			6			4					

Note: The last seven reports were not included in the above totals.

FRANKFORT PILGRIM COLLEGE

FRANKFORT, INDIANA

A Bible School of high educational standards and deep spirituality



ADMINISTRATION BUILDING

Contains 12 classrooms, offices, laboratory, and fruit room.

HISTORICAL

The history of any institution begins long before that institution takes any outward form. It begins in the hearts of those who first recognize the needs and catch the vision and what to do to accomplish the full fruition of that need and vision.

The history is not full and complete until the thoughts and feelings of the founders and promoters of such a work are unfolded in the lives of those for whom the burdens are borne.

And so the history and success of Frankfort Pilgrim College is being written, day by day, as the thoughts and feelings, the desires and

aspirations, the prayers and labors of its founders, its patrons, its promoters, its teachers are revealed in the lives and activities of its students, and its friends.

Frankfort Pilgrim College was called into existence by the needs of so many young people who wanted to attend school, that while providing an excellent grade of scholarship, at the same time protected them in the "faith of our fathers"—the "faith once delivered to the saints." The vision of the school demanded that there be no compromising of the truth as it is in the Bible and in Christ Jesus; that the school should be deeply spiritual and should insist upon an experience of regeneration and sanctification for all, whereby we are made alive to God and spiritual things and cleansed from sin, filled with the Spirit, and empowered for Christian service.

For years, a number of God's chosen people had waited on the

Our Teaching Staff

Our Bible and theology teachers are well-known with many years of experience in this line of work. Not only have they had broad experience in the schoolroom, but have also been successful in evangelistic, pastoral, and mission work. Thus their interpretations of Scripture are outstanding and they are able to enlarge it with practical applications invaluable to the student.

Our college work is taught by teachers who have had many years of experience in this line of work.

Our High School teachers have taught in public schools where they have met with success. They also hold teacher's license for teaching their subjects in the high school. Most of them also hold degrees from accredited colleges, having stood high in their respective courses of study.

Our music teacher has excellent qualifications for her work. She finished a course in music and has had a number of years of experience in music instruction.

Twenty-five years' experience as President of Bible Schools and Colleges; Teacher in Public Schools and Teacher's Normal; a successful Bible and Theology teacher of years of experience.



Rev. C. G. Taylor, President

Lord in prayer and burden, for a school centrally located in Indiana. Some planned for a school, while pleading with the Lord to direct them. At last, after months and years, it seemed clear to those immediately interested that it was time to establish the school. The providences of the Lord opened the way and pointed definitely to the time—the fall of 1927.

The District Council of Indiana took the initiative and decided to open the school at Frankfort, Indiana, in September, 1927. Members of the General Board of Education were consulted as well as many others who know the Lord.

The demands that have already been made upon the school require Bible, Music, Expression, the Upper Elementary Grades, High School, a full two-year College course and a Bible and Theological course.

With the Lord's smile upon the school and His Spirit leading, the spiritual tide of the school has been high and the success in the work of Christian education assured.

COURSES OF STUDY

"Instruction enlarges the Natural Powers of the mind."

Bible and Literary:

Grades—6, 7, and 8

High School—4 years

College—2 years

Christian Workers and

English Bible—3 years

Theological—4 years

Music:

Voice and Singing

Piano, Guitar,

Accordion, etc.

Expression, Public

Speaking

Nursing and Missionary

Business, Shorthand, Bookkeeping, Typing, etc.

Orchestra - Chorus

Bible in Every Class

"All scripture is given by inspiration of God, and is profitable for doctrine, for reproof, for correction, for instruction in righteousness; that the man of God may be perfect, thoroughly furnished unto all good works."—BIBLE.



THE DORMITORY

Consists of two ells, one 80 feet, the other 100 feet long. Contains drawing room, and rooms for 134 students.



LIBRARY, CHAPEL, AND DINING HALL

The library contains 12,000 books ready for the use of students.

Centrally Located—Easy To Reach

The school is almost ideally located in a beautiful grove just within the city limits of Frankfort, Indiana. This grove of stately oaks, hickories, and elms, carpeted with beautiful green, often brings forth exclamations from visitors, "What a beautiful place for a school!" It is in the heart of the Holiness Churches of the central states and near the center of population of the United States. It is near the center of Indiana District—the strongest district in number of churches and membership of the Pilgrim Holiness Church.

The largest camp meeting in the Pilgrim Holiness Church and one of the largest in the holiness movement is held each year in August on the beautiful grounds where the school is located. The opportunities to come in touch with the holiness people and holiness work are almost unlimited here.

The Right School

"Much depends on the school one selects in his search for the best place to go to secure an education for the work of the Lord. Too many young people, who really wanted to serve the Lord, have been sidetracked by some school that sent them home with the Bible a discounted book. They believed the Bible in its entirety when they started to school, but they came home believing it only in parts. There are schools that talk about a guarded Christian education. Their charter calls for it, and the plans of the originators were made with that end in view, but present management has diverted the purpose of the school to some other end. Attend a school that teaches the Bible as the authoritative revelation of God."

For further information and application blanks write to,

REV. C. G. TAYLOR

Frankfort

Indiana

CAMP MEETING, 1942

AUGUST 14-23, 1942

ASSEMBLY

AUGUST 24-26, 1942

MINISTERIAL CONVENTION

APRIL 14, 15, 16, 1942

Price 25c each