

Pilgrim Holiness Church

INDIANA CONFERENCE



Fifty-fifth Annual Conference Journal



1948

PICTORIAL EDITION

Journal of Proceedings

FORTY-FIFTH
ANNUAL SESSION

of the

Indiana Conference

Pilgrim Holiness Church
Frankfort, Indiana



August 23, 24, 25, 1948

CONTENTS

Official Directory	4
Journal of Proceedings	6
Rules	14
Zone Arrangements and Zone Leadership	14
Reports of Officers, Boards and Committees—	
District Superintendent's Report (Northern District).....	16
District Superintendent's Report (Central District).....	18
District Superintendent's Report (Southern District).....	19
Auditing Committee's Report	20
Conference Treasurer's Report	21
Camp Meeting Treasurer's Report	23
Statement of Income and Expenses of the Frankfort Pilgrim College.....	24
Statement of Assets of the Frankfort Pilgrim College.....	25
Educational Board's Report	26
Resolution Committee's Report	30
Ways and Means Committee's Report	36
Report of the Memorial Committee	38
Report of the Conference Sunday School Committee	40
Report of the Conference Young People's Treasurer.....	41
Ministerial Directory—	
Ordained Ministers	41
Licensed Ministers	46
Deaconesses, Missionaries	47
Coming From Other Districts or Churches	48
Conference Evangelists	48
Evangelistic Singers	48
In Memorium	49
Council Report on Placement of Pastors.....	50
Report of the Conference Statistician	54
Evangelists' and Unstationed Ministers' Report.....	87
Evangelistic Singers' Report	89
Church Reports	56

DIRECTORY

OFFICERS

District Superintendent (Northern District).....	Rev. Floyd Goins
504 W. Walnut St., Frankfort, Ind., Phone 1936-M	
District Superintendent (Southern District).....	Rev. Melvin Snyder
105 S. 17th St., Terre Haute, Ind., Phone Harrison 9138	
District Superintendent (Central District).....	Rev. Ralph Nibarger
3558 Graceland Ave., Indianapolis, Ind., Phone Hi. 2613	
Assistant District Superintendent (Southern District).....	Rev. Mark Storey
2727 Claremont St., Evansville, Ind., Phone 2-8725	
Assistant District Superintendent Central District).....	Rev. T. J. Preusz
1725 East 46th St., Indianapolis, Ind., Phone Br. 8208	
Assistant District Superintendent (Northern District).....	Rev. Gilbert Noel
1005 West 10th St., Marion, Ind., Phone 2846	
Conference Secretary.....	Rev. Carl Reed
1025 Pleasant Hill, Logansport, Ind., Phone 9372	
Conference Treasurer.....	Rev. E. V. Halt
226 E. Ohio St., Indianapolis, Ind., Phone Mk. 6481	

Advisory Members

Rev. James Hertel.....	English, Indiana
Rev. Ernest Carroll, 1115 East Indiana St.....	South Bend, Indiana
Rev. C. D. Jester, 1422 Cruft St.....	Indianapolis, Indiana
Rev. Virgil Camp, 379 N. E. 6th St.....	Linton, Indiana
Rev. Area Montgomery, 706 S. Fifth St.....	Frankfort, Indiana

Conference Statistician

Rev. Leonard Fletcher.....	Fulton, Indiana
----------------------------	-----------------

Conference Young People's Officers

Rev. Herschel Hughes.....	Executive Secretary
Rev. Clarence Klopfenstein.....	Treasurer

BOARDS AND COMMITTEES

Resolutions Committee

Gilbert Noel, E. E. Crowder, E. I. Faidley, G. R. Bateman, James Hertel.

Ways and Means Committee

Ernest Carroll, J. W. Pottenger, J. M. Burcham, T. J. Preusz, Ray Smith.

Memorial Committee

Beulah Arnett, Ruth Storey, Eula Kennedy.

Auditing Committee

Edgar Poe, Willis Clock, Clarence Jackson.

Reception Committee

Ralph McCrory, Carl Roark, M. G. Cole.

Devotional Committee

Dale Emery, Walter Keeney, Wm. Pratt.

Examining Board

Rev. Virgil Kelley, Rev. Virgil Camp—each for three years.
Rev. Lonnie Cole, Rev. Walter Speck—each for two years.
Rev. Aaron Hayhurst, Rev. George Huff—each for one year.

Educational Board

Rev. Carrie Gick, Rev. Walter Keeney—each for three years.
Rev. Flo Andrews, Rev. Walter Daugherty—each for two years.
Rev. Lester Henry, Rev. Harry Shepherd—each for one year.

Trustees of the Indiana Conference

Revs. M. H. Snyder, F. J. Goins, R. E. Nibarger, E. V. Halt, Area Montgomery.

Conference Sunday School Committee

Revs. Ralph McCrory, Moreland Yundt, Kenneth Greves.

Committee to Arrange Ministerial Convention

Revs. O. D. Williams, Virgil Kelley, Walter Daugherty.

Camp Meeting Board

Rev. Mark Storey	Rev. T. J. Preusz
Rev. James Pursley	Rev. Clarence Jackson
Rev. C. D. Lester	Rev. Wilbur Pottenger
Rev. Herschel Hughes	Rev. Virgil Camp
Rev. Floyd Gookins	Rev. Walter Speck
Rev. Angus Jeffers	Rev. Kenneth Greves
Rev. Raymond Street	Rev. Ray Smith

Rev. Aaron Hayhurst

Indiana Conference Members of Board of Directors Frankfort Pilgrim College

Rev. Floyd Goins	Rev. Ralph Nibarger
Rev. C. D. Jester	Rev. Carl R. Reed
Rev. Melvin Snyder	Rev. Area Montgomery
Rev. E. W. Wright	Rev. Ralph McCrory

JOURNAL OF PROCEEDINGS

FIRST SITTING

The Forty-fifth Annual Session of the Indiana Conference of the Pilgrim Holiness Church convened at Frankfort, Indiana, August 23, 1948 at nine-thirty a. m.

The Conference opened with devotions in charge of Rev. Elton Call, who led the conference in singing "I Feel Like Traveling On". Rev. Wilbur Pottenger led in prayer. Rev. Marvin Jewel read the third chapter of Second Thessalonians as the scripture lesson.

A motion prevailed that Rev. Melvin Snyder preside as chairman.

The Secretary called the roll.

Motion prevailed that Miss Helen Jones be seated as delegate from the Brookside Church, Indianapolis.

Motion prevailed that Mrs. Marcella Swan be seated as delegate from the Epsom Church.

Motion prevailed that Wayne Wright be seated as delegate from Hulman Street Church, Terre Haute.

Motion prevailed that Mrs. Ruth Royer be seated as delegate from the Spearsville Church.

Motion prevailed that Mrs. Goldie Mason be seated as delegate from the Brazil Church.

Motion prevailed that the south wing of the tabernacle be included in the conference bar.

Motion prevailed that the chairman appoint three pages to handle the microphones on the floor. They were appointed as follows: Rev. Roy Wilson, Rev. Oscar Miller, and Rev. Moreland Yundt.

A motion prevailed that the hours of the Conference session be the same as last year: 8:30 a.m. to 11:30 a.m.; 1:30 p.m. to 4:30 p.m. and from 7:00 p.m. to 9:00 p.m.

Mrs. Alma Shearer, Mrs. F. H. Tormohlen, Rev. and Mrs. C. E. Pendry, Rev. Paul Ragsdale, Rev. Edward Purcell, Rev. and Mrs. C. H. Rutherford, Rev. R. S. Wheeldon and Lloyd Pendry were introduced to the Conference. Each gave a brief testimony.

A motion prevailed that they be given honorary seats within the Conference Bar.

A motion prevailed that the three District Superintendents speak to the conference at least twenty minutes each.

The report of the Auditing Committee was read and accepted.
The report of the Statistician was read and accepted.

A motion prevailed to extend the time until 12:00 noon.

A motion prevailed that the Resolutions Committee be asked to submit the resolutions concerning the reports of the unorganized churches.

The conference recessed by expiration of time. Dismissed with prayer by Rev. Carl Reed.

Conference reconvened with Rev. Carl Roark in charge of the devotions. Rev. J. M. Burcham led the conference in singing "Tis So Sweet To Trust In Jesus". Rev. Moreland Yundt led in prayer. Rev. R. H. Smith read the eighth Psalm as the scripture lesson.

Rev. Floyd Goins then took the chair.

The secretary called the roll of those who failed to answer during the reading of the first roll call.

Motion prevailed that Mrs. Gilbert Noel be seated as delegate from the Marion Church until the delegate arrives.

Motion prevailed that Eddie Opliger be seated as delegate from the Fort Wayne Church.

Rev. Earl Stewart was introduced to the conference and gave a brief testimony.

The Sunday School Committee's report was read and accepted.

The Examining Committee gave a partial report, which was accepted.

The Resolutions Committee gave a partial report.

Motion prevailed to recess long enough for a Conference picture to be made.

The conference reconvened at the call of the bell and all joined in singing "Blest Be the Tie That Binds". Rev. Floyd Goins led in prayer.

The Resolutions Committee continued the partial report.

The conference recessed by expiration of time. Rev. Clarence Keith dismissed with prayer.

The Conference reconvened with Rev. Ralph McCrory in charge of the Memorial Service. Jack McCullough led in singing "Sweet By and By". Rev. E. W. Wright spoke briefly concerning the lives of Rev. Samuel Moore, Rev. Vernon Webb, Rev. James McCrory, Rev. David Stewart, Mrs. F. B. Dunn, the wife of a minister, and Rev. Harvey Raines, a local preacher.

Rev. Everett Shelhamer sang "The Last Mile of the Way". Rev. W. H. Pratt gave a brief message on the subject "The Third Installment", using as a basis Romans 8:19.

Rev. Ralph McCrory led in prayer.

Rev. Ralph Nibarger took the chair.

A motion prevailed that the General Treasurer, Rev. E. V. Halt, be seated on the platform.

Motion prevailed that Rev. R. K. Storey be seated on the platform.

Motion prevailed that the order of the day immediately following the noon meal Tuesday, be the election of officers.

Rev. K. W. Phipps was introduced to the Conference, and gave a brief testimony.

The Resolutions Committee continued report.

Motions prevailed to delete numbers 9, 10, and 11 under Church Government.

Motion prevailed to delete number 14 under Church Government.

Motion prevailed to delete numbers 6, 13, and 22 under Camp Meeting and Conference.

Motion prevailed that a resolution be submitted by this Conference to the City Council concerning the sewerage and electric service of the grounds.

Motion prevailed to delete numbers 24 and 28 under Camp Meeting and Conference.

The Ways and Means Committee gave a partial report.

Motion prevailed to change the words "general budget" in #1 under Local Church Finance, to read "General Administration, Foreign Missions, and Home Missions".

Motion prevailed that number 2 under District Finance be referred to the committee for redrafting.

Motion prevailed that number 2 under Camp Meeting and Conference be amended to read "possibility and cost of hospitalization insurance".

Motion was made to extend the time until 10:00 o'clock.

Motion prevailed to amend said motion to provide for an extension of 30 minutes. The motion as amended carried.

Motion prevailed to table number 3 under Camp Meeting and Conference.

Resolutions Committee presented resolution to delete #6 under Miscellaneous.

Motion made to refer this resolution to the committee.

Motion prevailed to extend the time until vote on this resolution be made.

Motion prevailed to refer number 6 to the committee.

Conference adjourned by expiration of time.

Dismissed with prayer by Rev. Melvin Snyder.

SECOND SITTING

The second sitting opened with Rev. Elton Call leading in singing "The Lily of the Valley". Rev. G. R. Bateman led in prayer, after which Rev. Vernal Mowrey read the scripture lesson from Second Corinthians, chapter 13. Rev. F. J. Goins presented our General Superintendent, the Rev. L. W. Sturk, to the Conference who gave a brief and encouraging report on the work of our General Church, before his inspirational message, "Let The Church Roll On"; emphasizing the thought, "If Jesus leads this army we shall outshine the sun". Rev. Sturk led the Conference in singing, "If Jesus Goes With Me I'll Go".

The minutes of the first sitting were read and accepted.

Report of Rev. F. J. Goins, Superintendent of the Northern District, was read and accepted.

Report of Rev. R. E. Nibarger, Superintendent of the Central District, was read and accepted.

Report of Rev. Melvin Snyder, Superintendent of the Southern District, was read and accepted.

The report of the conference treasurer, Rev. E. V. Halt, was read and accepted.

Upon request of Rev. Melvin Snyder, the Conference stood and sang the Doxology, in appreciation of the splendid report of the Conference treasurer.

Motion prevailed to postpone the order of the day so that the business necessary to precede the election could be transacted.

Motion prevailed that Brother Yundt refer his proposal to the resolutions committee.

Motion prevailed that the time of this sitting be extended until the new churches be received into the Conference.

Rev. F. J. Goins presented Rev. Cecil Kline, pastor of the church at Sharon; Rev. Dale Emery, pastor of the South Side Church at Marion and the delegate, Miss Andrews; and Rev. Purcell, pastor at Thornhope and Mrs. Martha Hines, delegate.

Motion prevailed to receive these churches in the Conference.

Rev. Melvin Snyder presented two churches to the Conference, the church at Austin and Brother and Sister Keith, the pastors, and the church delegate, John Keith; also the church at Cannelton, whose pastor and delegate were unable to be present. Rev. Grace Marshall, an ordained deaconess in the Methodist Church, who is joining the Conference, was introduced and gave her testimony.

Motion prevailed to accept these churches into the Conference.

Motion prevailed to extend the time of this sitting until the report of the Zoning Committee be read.

Report of the Zoning Committee was read and accepted.

Rev. Paul Isgrigg was appointed by Rev. F. J. Goins as the temporary chairman of Zone No. 2.

Due to the expiration of time the Conference stood and sang the chorus of "When We All Get To Heaven".

The Conference reconvened with Rev. Roy Wilson leading the singing of "Whosoever Meaneth Me", after which Rev. Fay Locke led the Conference in prayer. Rev. Willis Clock read the scripture lesson from I Timothy 3.

Rev. L. W. Sturk, General Superintendent, spoke to the Conference on "The Death Bird of Barbados".

A partial report of the Ways and Means Committee was read by Rev. Walter Speck.

A motion was made to amend resolution number 2 to read that the salaries of the District Superintendents be increased to \$70.00, and their full time be devoted to the duties of superintendency.

A motion was made to amend the amendment to read that the Superintendents be permitted to hold one revival a year, according to their own choosing, aside from their district duties.

The amendment to the amendment was lost.

The amendment was lost.

The original resolution was accepted as read by the Committee, granting the superintendents a salary of \$65.00 per week plus mileage.

Report of the Examining Board was read by Rev. Virgil Kelley and was accepted.

Report of the Educational Board was read by Rev. Lester Henry and accepted.

Rev. Carl Reed read a letter to the Conference from the Executive Council of the General Board concerning the division of the Indiana Conference.

The three District Superintendents appointed twelve tellers. Rev. F. J. Goins appointed Revs. Guy Mowery, Leonard Fletcher, R. G. Bateman, and William McFarlin. Rev. R. E. Nibarger appointed Revs. Herschel Hughes,

Clarence Jackson, Walter Daugherty, and Vernal Mowery. Rev. Melvin Snyder appointed Virgil Halt, Revs. Hershel Hamm, Raymond Street, and J. M. Burcham.

A partial report of the Resolutions Committee was read by Rev. James Hertel.

The members of the Conference were re-seated according to their respective districts for the purpose of voting for their superintendents.

Rev. L. W. Sturk led the Conference in a few moments of prayer, invoking Divine guidance in the elections.

The ballots were cast.

The report of the tellers showed that for the Northern District F. J. Goins was elected Superintendent, and Gilbert Noel was elected as Assistant; for the Central District, R. E. Nibarger was elected Superintendent, and T. J. Preusz was selected as Assistant; for the Southern District, Melvin H. Snyder was elected Superintendent, and Mark Storey was elected as Assistant.

Each of the three District Superintendents spoke briefly accepting the office.

Ballots were cast for Conference Secretary.

Report of the Indiana Conference Young People's Treasurer was read and accepted.

Report of the tellers showed that Carl R. Reed was elected Conference Secretary.

Motion prevailed that the time of adjournment be postponed until the nominations for Conference Treasurer be submitted by the Council.

Report of Frankfort Pilgrim College was read by Rev. R. K. Story, President, and accepted.

The following nominations for Conference Treasurer were made by the district council: Rev. E. V. Halt, and Rev. Angus Jeffers.

Ballots were cast for office of Conference Treasurer.

Report of the tellers showed that Rev. E. V. Halt was elected as Conference Treasurer.

Due to the expiration of time the Conference recessed until the evening sitting. Rev. L. W. Sturk dismissed with prayer.

The Conference reconvened with Rev. Floyd Gookins leading in the singing of "The Lily of the Valley".

The motion prevailed to accept the recommendation to ordain Rev. Blanche Tedrow by proxy.

Names of the candidates for ordination were read by the Conference Secretary: J. R. Mickschl, Dorothy Williams, Walter H. Johnson, Arthur V. Skinner, Walter Wells, Samuel D. Webb, Brose Bond, Carl Sager, Earl Fuller, and Blanche Tedrow. They were seated in front of the platform.

The Ordination Service opened with Rev. F. J. Goins leading in singing "A Charge to Keep I Have", after which Rev. W. S. Dean led in prayer. Scripture lessons were read by Rev. Melvin Snyder, I Timothy 3:1-4; and by Rev. F. J. Goins, II Timothy 4:1-8.

Rev. L. W. Sturk delivered an encouraging ordination message based on Acts 26:19. His subject was "The Minister; His Responsibility, His Resources, and His Reward."

Sister Keith was ordained by proxy for Rev. Blanche Tedrow.

Motion prevailed to allow the Northern District to elect one council member, the Central District one council member, the Southern District, two council members, and one member to be elected at large.

Ballots were cast for council members.

Motion prevailed to extend the time for 20 minutes.

Report of the tellers showed that in the Northern District Area Montgomery was elected; in the Central District C. D. Jester was elected; in the Southern District James Hertel and Virgil Camp were elected.

Motion prevailed that while the tellers are working on the balloting for the district council member at large, that we hear from Rev. P. F. Elliott concerning his work with the Sunday School, Young People, and Pension Plan. He presented the "Pilgrim You News", the newest publication of the Pilgrim Holiness Church, also the new highway signs. He gave a few details concerning the pension plan for ministers.

Report of the tellers showed that there was no election on the first ballot for council member.

Motion prevailed that we vote on the three highest names: Ernest Carroll, W. H. Pratt, and Ralph McCrory.

Ballots were cast.

Report of the tellers showed that Ernest Carroll was elected.

The Conference adjourned by expiration of time.

Dismissed with prayer by Rev. Jack Donovan.

THIRD SITTING

The third sitting opened with Rev. F. J. Goins leading in singing "He Brought Me Out", after which the entire Conference united in prayer. Rev. L. W. Sturk spoke briefly on "How to Get Along With Pilgrims".

The Conference was favored by a song from our General Superintendent, Rev. L. W. Sturk.

The minutes of the second sitting were read, corrected, and approved.

A partial report of the Resolutions Committee was read by Rev. James Hertel.

A partial report of the Ways and Means Committee was read by Rev. Walter Speck.

A motion to amend the resolution to read that the students be assessed only \$5.00 and the camp meeting treasurer pay \$5.00, instead of \$10.00.

Resolution as amended carried.

Motion was made and seconded to substitute a 4% increase in the distribution of the school budget, instead of accepting a \$1,000.00 gift from the Conference as set forth by the Resolutions Committee.

The substitute motion was withdrawn by consent of the Conference.

A partial report of the Resolutions Committee was read by Rev. James Hertel.

Request was made by Rev. Goins for 25 men to aid in the planting of some trees on the campus.

Motion prevailed to amend the resolution concerning the time of the Annual Young People's Convention to read the third Thursday of June.

Motion prevailed to amend the resolution concerning the number of the copies of the minutes to be printed to read, "1500 copies or more."

Motion prevailed that Bro. Yundt's recommendation be read to the Conference.

Motion prevailed to refer this recommendation to the Resolutions Committee for further discussion, and present it to the Conference next year.

Motion prevailed to extend the time until 12:00 noon.

A revised report of the Zoning Committee was read and accepted.

Report of the Memorial Committee was read by Rev. Eula Kennedy, and accepted.

Conference recessed by expiration of time.

Dismissed with prayer by Rev. Area Montgomery.

Conference reconvened with Rev. O. D. Emery leading in singing "At The Cross", after which Rev. G. R. Bateman led in prayer.

The Conference was re-seated according to their Districts to elect the members of the School Board.

Ballots were cast.

Reports of the tellers show that in the Central District Rev. C. D. Jester was elected; in the Southern District Rev. E. W. Wright was elected; in the Northern District Rev. Carl R. Reed was elected.

Conference assembled to elect two members at large for the School Board.

Nominations for Examining Board as made by the council were read by the Secretary: Virgil Kelley, and Virgil Camp.

Motion prevailed to ratify these nominations of the council.

Nominations for Educational Board as made by the council were read by the Secretary: Carrie Gick, and Walter Keeney.

Motion prevailed to ratify these nominations of the council.

Motion made and seconded to retain the same trustees for another year: Rev. Melvin Snyder, Rev. F. J. Goins, Rev. R. E. Nibarger, Rev. E. V. Halt, and Rev. Area Montgomery. Motion carried.

Members of the Campmeeting Board were read by the Secretary: Revs. Mark Storey, Angus Jeffers, Virgil Camp, James Pursley, Raymond Street, Walter Speck, C. D. Jester, Thurman Preusz, Kenneth Greeves, Herschel Hughes, Clarence Jackson, Ray Smith, Foyd Gookins, Wilbur Pottenger, Aaron Hayhurst.

The following invitations were given for the Ministerial Convention: Frankfort First Church, and Anderson First Church.

The invitation to Frankfort First Church was accepted.

Recommendation was presented by Rev. Virgil Kelley that Clement Dilk be issued first year conference license.

Motion prevailed to vote on the four highest names for school board member at large: Area Montgomery, Mark Storey, Robert Hine, and Ralph McCrory.

Motion prevailed that the council appoint the Sunday School Committee.

Report of the tellers showed that Area Montgomery and Mark Storey were elected at large on the School Board.

Due to the fact that Mark Storey is already on two major committees, his resignation was accepted.

Ballots were cast for the next two highest names: Ralph McCrory, and Robert Hine.

A partial report of the Resolutions Committee was read and accepted.

Report of the tellers showed that Ralph McCrory was elected as member of the School Board.

The following evangelists and song evangelists of the Northern District were introduced and recommended to the Conference: Rev. James Pursley, Rev. Wm. McFarlin, Rev. Area Montgomery, Rev. Albert Ewing, Rev. Howard Goins, Rev. Dennis Barber, Gilbert Watson, and Miss Bettylou Morris.

The following evangelists of the Central District were introduced and recommended to the Conference: Rev. Dorsey Schenck, Rev. Wm. Slater, Rev. Katie Locke, Rev. Mamie Yaryan.

The following evangelists of the Southern District were introduced and recommended to the Conference: Rev. Lee Kearby, Rev. Wilkes Ragsdale, Rev. W. S. Dean, Rev. Velma Hertel, and Miss Pauline Watson, singing evangelist.

Council report on placement of pastors for the Northern District was read by Rev. F. J. Goins.

Council report on placement of pastors for the Central District was read by Rev. R. E. Nibarger.

Council report on placement of pastors for the Southern District was read by Rev. Melvin Snyder.

Report of the Campmeeting Treasurer was read by Rev. Angus Jeffers, and accepted.

Motion prevailed that the council appoint a committee for memorials to the General Conference.

Members of the various committees appointed by the District Superintendents were read by the Secretary:

RESOLUTIONS: Revs. Gilbert Noel, E. E. Crowder, E. I. Faidley, James Hertel, and G. R. Bateman.

WAYS AND MEANS: Revs. J. W. Pottenger, J. M. Burcham, T. J. Preusz, Ray Smith.

MEMORIAL COMMITTEE: Beulah Arnett, Ruth Storey, Eula Kennedy.

AUDITING COMMITTEE: Revs. Edgar Poe, Willis Clock, Clarence Jackson.

RECEPTION COMMITTEE: Revs. Ralph McCrory, Carl Roark, M. G. Cole.

DEVOTIONAL COMMITTEE: Revs. Dale Emery, Walter Keeney, Wm. Pratt.

SUNDAY SCHOOL: Revs. Ralph McCrory, Moreland Yundt, Kenneth Greeves.

MINISTERIAL: Revs. O. D. Williams, Virgil Kelley, Walter Daugherty.

Motion prevailed that the minutes of this third sitting be read as approved by Conference council.

Motion prevailed that the council be authorized to care for all unfinished business.

Motion prevailed that the 45th Annual Conference of the Indiana District be adjourned by standing and singing "I Feel Like Traveling On".

Rev. L. W. Sturk dismissed with prayer.

(Minutes of Third Sitting read and approved by Conference Council.)

STANDING RULES

1

The conference bar is to include the four main sections of the tabernacle back to the third post including the platform and the south wing.

2

The District Superintendents are to appoint and fill vacancies on all committees.

RULES CONCERNING REPORTS

Quarterly Report from Churches

One copy is to be sent each quarter to the Conference Statistician.

Annual Reports

1. One copy of the annual report is to be sent to the Statistician. This report is to be made on the same blank as the quarterly reports.

2. Each unstationed preacher, evangelist, licensed or ordained deaconess shall send an annual report to Statistician.

3. All report blanks to be secured from the Statistician.
All annual reports must be in by July 31.

Conference Statistician

Rev. Leonard Fletcher
Fulton, Indiana

ZONE ARRANGEMENT AND ZONE LEADERSHIP

Zone 1

Zone Chairman.....Rev. Ernest Carroll
Zone Y. P. Chairman.....Rev. Marvin Jewell

Bass Lake	Logansport	South Bend
Churubusco	Nappanee	Thornhope
Fulton	New Carlisle	Tyner
Lagrange	Sharon	Walkerton

Zone 2

Zone Chairman.....Rev. Paul N. Isgrigg
Zone Y. P. Chairman.....Rev. O. D. Emery

Andrews	Huntington	Marion, South Side
Fairmount	Jonesboro	Wabash
Fort Wayne	Marion, Grant St.	
Gas City	Marion, First	

Zone 3

Zone Chairman.....Rev. Fay Locke
Zone Y. P. Chairman.....Rev. Ralph McCrory

Delphi	Howard Chapel	Lebanon
Forest	Kokomo, North Side	Michigantown
Frankfort, East Side	Kokomo, S. Purdum St.	Monon
Frankfort, First	Lafayette	Norway

Zone 4

Zone Chairman.....Rev. G. R. Bateman
Zone Y. P. Chairman.....Rev. Lincoln Lehue

Alexandria	Frankton	Swayzee
Anderson	Leisure	Tipton
Chesterfield	Muncie	Winchester
Elwood	Noblesville	Windfall

Zone 5

Zone Chairman.....Rev. O. W. Barnes
 Zone Y. P. Chairman.....Rev. Clarence May

Browns Chapel	Greenfield	New Castle
Centerville	Knightstown	Richmond, First
College Corner	Milton	Richmond, East Side
Connersville		

Zone 6

Zone Chairman.....Rev. T. J. Preusz
 Zone Y. P. Chairman.....Rev. Clarence Jackson

Beech Grove	Indianapolis, Fourth	Indianapolis, Prospect
Greenwood	Indianapolis, Bate St.	Indianapolis, Valley View
Indianapolis, First	Indianapolis, Brookside	Indianapolis, West
Indianapolis, Second	Indianapolis, Central	Lawrence
Indianapolis, Third	Indianapolis, McCarty St.	

Zone 7

Zone Chairman.....Rev. R. H. Smith
 Zone Y. P. Chairman.....Rev. Vernal Mowery

Bethel	Hartsville	Shelbyville
Clarksburg	Hope	Spearsville
Columbus	Morgantown	Westport
Edinburg	Rodney	
Greensburg	Rushville	

Zone 8

Zone Chairman.....Rev. Eula Kennedy
 Zone Y. P. Chairman.....Rev. Cecil Bowker

Aurora	Lawrenceburg	Seymour
Concord	Madison	Sycamore
Deputy	North Vernon	Versailles
East Enterprise	Rising Sun	Vevay

Zone 9

Zone Chairman.....Rev. Willis Clock
 Zone Y. P. Chairman.....Rev. Elton Call.....

Brazil	New Goshen	Sullivan
Coalmont	Prairie Creek	Terre Haute, Greenwood St.
Jasonville	Sandford	Terre Haute, Hulman St.
Linton	Scott City	Terre Haute, North Side
Mecca	Seeleyville	Terre Haute, West
Merom	Shelburn	Terre Haute, Sixth Ave.

Zone 10

Zone Chairman.....Rev. James Hertel
 Zone Y. P. Chairman.....Rev. Velma Sarles

Austin	Loogootee	Poplar Grove
Bedford	Marengo	Scottsburg
Burns City	Medora	Shoals
English	Mitchell	Orleans
French Lick	New Albany	
Harvey Flats	Paoli	

Zone 11

Zone Chairman.....Rev. J. M. Burcham
 Zone Y. P. Chairman.....Rev. Carl Roark

Bicknell	Evansville, First	Somerville
Boonville	Evansville, Forest Hills	Twin Oaks
Cannelton	Fort Branch	Vincennes
Elnora	Oaktown	Washington
Epsom	Petersburg	Wheatland

REPORTS OF OFFICERS, BOARDS AND COMMITTEES

DISTRICT SUPERINTENDENT'S REPORT

Northern District

August 23, 1948

To the Annual Indiana Conference of the Pilgrim Holiness Church now in session. My Fellow-Pilgrims:

Another year has come and gone and I am herewith reporting my activities as a District Superintendent.

My heart is filled with deep gratitude to God and keen appreciation for the Godly Co-Superintendents, Assistant Superintendent, Ministers and laymen with whom I have labored. From the standpoint of activities and responsibilities I feel this has been the most strenuous year of my ministry. However, God has given me unusual strength for the battle and a measure of victory has been enjoyed. To God be the praise.

Since the Conference Council has charged me with the oversight of the Old People Home, I shall make a few general statements concerning the same. Three of our aged members went to Heaven this year, Mrs. Lura Culley, Mrs. Amanda Neal and Mrs. Anna Webb. There has been considerable sickness among the old folk. At this time Mrs. Clark, a member of the home is critically ill in the Hospital. God has given us a splendid matron in the person of Mrs. Mobley who is loved by all the old folk. Mrs. Martha Shoemaker, the wife of the late Jacob Shoemaker, for a cash consideration, has relieved us of any further responsibility for her welfare.

NEW CHURCHES. Through the faithfulness of certain brethren we have three new churches to present to this Conference.

South Marion: This church is the product of Rev. Dale Emery's faithful and sacrificial ministry. While a student in Marion College he became interested in a Pilgrim Holiness Church in South Marion and as a result we have the church with 12 charter members. They have purchased a small brick church building which had been used as a sign shop. This is our third church in Marion.

Thornhope: Rev. E. K. Purcell, one of our Ohio Pilgrim Ministers and a student of Frankfort Pilgrim College was called to pastor the Thornhope Community Holiness Church. It seems he made them hungry to be Pilgrims and as a result we organized with thirteen charter members and several others are expected to unite with us. They have a nice church building with some indebtedness. The property will be turned over to the Pilgrim Holiness Church.

Sharon: Sharon is a country church some nine miles west of Rochester. This too was a community church. Rev. Cecil Kline, one of our ministers, has pastored the church for several years. The building was deeded to the Pilgrim Holiness Church and we organized with seven members.

We are indebted to these three Godly young men for the part they had in bringing these new churches into the Conference. It was my privilege to hold a revival at Sharon, also in South Marion.

NEW CHURCH BUILDINGS. **Nappanee:** Here, the Pilgrims, under the leadership of Rev. Marvin Jewell have completed a beautiful new Church Building. This is known as the Crider Memorial Pilgrim Holiness Church in honor of the late Rev. W. J. Crider who closed his earthly ministry while pastoring the Nappanee Church.

Gas City: The Pilgrims at Gas City are still on the march. They too, have erected a splendid church building and are having blessed times therein. Rev. C. E. Carroll is the aggressive pastor.

Lagrange: At Lagrange, under the direction of Rev. Ray Martin, a splendid basement church has been completed and the attendance is increasing.

Andrews: At Andrews a new church building is under construction. They also have much of the material for a new parsonage.

NEW PARSONAGES. The Committee charged with the responsibility of securing a home for the District Superintendent has purchased a beautiful modern home at a cost of \$8000.00. The property is well located, being two blocks from Frankfort First Church, one block from grade school and four blocks from downtown Frankfort. In response to the financial appeal the churches of the Northern District have sent in over \$4000.00 on the parsonage.

Anderson: To make room for their growing Sunday School, the Anderson Pilgrims have converted their parsonage into a Sunday School Annex and have purchased a wonderful eight room home which is now occupied by the Pastor.

Windfall: Under the leadership of Hascue Carter, the Windfall Pilgrims have paid off all indebtedness on their church and parsonage as well as making many improvements.

EVANGELISTS. I feel a word of appreciation is due our sacrificing and God fearing Evangelists. God has put them in the church, their ministry is essential, their labors have been faithful. Let us hold them up in prayer, keep them busy and pay them well.

A beautiful spirit of co-operation has prevailed throughout the District. Sixteen pastors were recalled without an opposing vote and many received all but one vote. I feel our pastors have carried the burden and have exemplified before their people sanctified character. The churches are to be commended for the substantial increases in salary they have given the pastors.

ACTIVITIES: In attempting to discharge my duties, I have made 175 visits to churches, preached 286 times, held 18 annual meetings, 37 Board meetings, attended 13 Zone meetings, made 37 business trips, held two week-end meetings, three Home Missionary revivals, assisted the church at Foresr in a revival, held two Camp meetings and one Ministerial meeting, conducted two funerals, assisted in three, attended all Camp Board, Council and School Board and two General Board meetings, one District Superintendent's Conference and spent six weeks working on our building project. I traveled approximately 25,000 miles.

PROGRESS. As a whole I feel this has been a good year. Revival fires have burned in a number of churches. Sunday School attendance has increased and due to crowded conditions several churches are planning extensive building programs. The church at Michigantown has just completed a splendid full size basement. Brother Locke had the direct oversight of the work.

PROSPECTS. Our prospects are as great as our obedience and Faith. God hath given us an unusual land grant, "Every place that the sole of your foot shall tread upon, that have I given unto you, as I said unto Moses."—Joshua 1:3.

With the memories of our 1948 Camp Meeting with its awakening messages and salvation victories fresh on our hearts and minds, I feel our ministers and people can and will return to their churches with a Holy Zeal born of the Spirit and cultivated by obedience to God. Motivated by this zeal we should expect great victories and definite spiritual, numerical and financial progress.

May our motto be "On to Victory".

Respectfully submitted,

F. J. GOINS

DISTRICT SUPERINTENDENT'S REPORT

Central District

To the Forty-fifth annual meeting of the Indiana Conference of the Pilgrim Holiness Church. Greetings to one and all in the name of our Lord and Saviour Jesus Christ:

This has been a year blessed of the Lord and appreciated by your humble servant for the many blessings I have received from fellowship with our good Pastors, evangelists, special workers, and laity of the Central District. No greater blessing and inspiration could be received than that enjoyed by the fellowship and close association with my fellow-workmen and Superintendents of the other two districts of this great Conference, Rev. F. J. Goins and Rev. M. H. Snyder. May God richly anoint these co-workers and also my able assistant, Rev. T. J. Preusz, and the many others who have contributed to whatever success and blessing we may have been to you throughout the year by the Precious Presence and help of the Holy Spirit.

I am certainly glad and thankful unto the Lord for the desire and vision which has been found among our people for the deeper and more spiritual things of the Lord. May there ever be an increasing desire along this line among our many Pilgrims.

We also rejoice in the interest shown in the various departments of the local churches, especially in our Sunday Schools. Many have enlarged their facilities to train the youth of our church by buying buses and other equipment for the various departments of their Schools. We also wish to thank the Conference Sunday School Committee for their hard labor and interest in this great work.

Some material reverses have been encountered, namely, at Rising Sun and Connersville, Indiana. The Rising Sun brick church was completely destroyed by storm. However, our faithful Pastor, Rev. J. R. Mickschl, has pushed ahead worshipping in the Town Library. They now have around \$3500.00 for rebuilding. We trust that a new building may be completed soon. The church at Connersville had just completed the basement and was worshipping in it when a flash flood and faulty city sewer caused two of the walls to be destroyed. However, our faithful pastor, Rev. Clarence May and his faithful members have rebuilt the walls and are again worshipping the Lord in their new place.

God has led us towards two new places of worship which we are hoping and praying by God's help to gain as new churches for the district in the near future.

Again we appreciate the vision manifested by several of our local churches which have been handicapped by inadequate places of worship by making advancements towards new locations and buildings. Centerville church, pastored by Rev. Best, after worshipping for years in store buildings and halls, has bought a lot in the new division of town and now have the frame work constructed for a new church. Also Deputy, a new church, has been worshipping in a store building. They have bought a lot and are now building the basement. Rev. Cleona Wright is the pastor. Versailles Church, pastored by Rev. Cecil Bowker, has built a new seven room home and by God's help, it is nearly paid for. Several other churches are in the midst of rebuilding and remodeling. Let us pray that God will richly bless one and all in their advancements for the Lord.

Regarding my personal report since the beginning of the fiscal year, I have made 222 visits to our churches, preached 171 times, made 14 business trips, conducted 38 board meetings and annual elections, attended 18 zone meetings, visited many revivals and conventions, held one camp meeting, five week-end revivals, attended all Council, Camp, and school board meetings. Also, did my best as chairman of the Building Committee to carry out the desires of the Committee, and gave a large part of seven weeks toward the

work both at Fort Wayne and Frankfort, traveled 15,264 miles, preached two funerals, and best of all witnessed many souls seeking and finding God.

May God help each of us to be ready for the coming of our Lord and Saviour Jesus Christ by being loyal and sincere to our Master and church, constantly exalting Christ and Holiness to a lost world.

Faithfully submitted,

R. E. NIBARGER

DISTRICT SUPERINTENDENT'S REPORT Southern District

To the Forty-fifth Annual Conference of the Pilgrim Holiness Churches of Indiana, Greetings:

"Grace unto you and peace from God our Father and the Lord Jesus Christ. We are bound to thank God always for you, Brethren, as it is meet, because that your faith groweth exceedingly and the love of everyone of you all toward each other aboundeth."

This has been the busiest year of my life, but I am indeed grateful to God that I can report present personal victory and that the peace that passeth knowledge is my happy possession. It is with deep gratefulness to God for these manifest favors that I present this report of the work which God and the church has intrusted to my oversight during the past year.

REVIVALS: The Pilgrim Holiness Church was born in the atmosphere of spiritual awakening and it is only as we maintain this revival spirit that we may hope to please God and win souls. We are indeed happy to report that many of the churches of the Southern District have enjoyed real revival seasons during the past year and that a number of new people have been brought into the church, as well as the members revived and blessed. We must have an ever increasing revival spirit in our churches if we are to survive the spirit of this wicked age.

NEW CHURCH BUILDINGS: The Bedford and Sullivan churches have both completed well constructed basement churches in choice locations. Thank God neither is near a railroad track. Evansville, Forest Hills, and Petersburg churches are in the process of constructing new church buildings that will do credit to the cause we love.

NEW PARSONAGES: Seeleyville church has completed a nice four room parsonage; Epsom church has purchased a well constructed house and moved it next to the church; the Prairie Creek church will soon have a new parsonage completed. The pastors of these churches as well as the ones who are building new churches are men of sacrifice and vision. In every case they are taking the lead in these projects and in some cases are doing practically all the work. God bless these precious men who love the cause of God and the church above all else.

IMPROVEMENTS: West Terre Haute and Terre Haute, Sixth Avenue churches have put new basements under their church buildings this year. Evansville, First has partitioned its basement into Sunday School rooms and French Lick church has new pews, new floors, and a beautiful redecoration job completed. Washington church has taken another step toward its goal by finishing the interior of their large basement church. The Scotts City church has refinished floors and redecorated. Sister Dean did much of this work herself.

HOME MISSIONARY PROJECTS: The Southern District has had five Home Missionary projects this year, namely: Austin, Cannelton, Orrville, Valeene, and Birdseye. Austin and Cannelton are now organized and will be presented to the Conference. Large crowds attend the services at Orrville sometimes numbering 140 and the Sunday School averages 70 or better. Rev.

Robert Martin has moved on the field and a new church is now in the process of being constructed. At Valeene we purchased a barn and converted it into a lovely church. Under the direction of Rev. James Hertel the preachers of Zone 9 did this work at a minimum of cost. God has used Rev. Stella Critchfield in a marvelous way in this place. At Bidseye a Tabernacle has been turned to us and we hope to have a strong church in this community within the near future. Rev. Estel Eckart has been caring for the flock in this place.

THE BROADCAST: Throughout the year we have maintained a weekly broadcast over Station WSUA, Bloomington, Indiana. It is heard at 10:10 a.m Central Standard Time each Saturday morning and is 1010 on the dial. We have heard from many friends outside our church as well as our own people. We believe this ministry will not only bless our own people but will be a great help in future home missionary work.

GENERAL CHURCH INTERESTS: During the year it was my honored privilege to visit a number of our churches in company with our beloved General Superintendent. The meetings were announced to all the churches and many drove in to hear the General Superintendent for the first time. Not only were local churches visited but profitable preacher's meetings held in each of the three Districts.

It was also my privilege to visit strategically located churches in company with our General Secretary of Home Missions. These meetings also were well attended and blessed of God. We deeply appreciate all our General Leaders.

OUR SCHOOL: Having been elected President of the School Board it became my duty this year to devote some time to the School interestss. We are happy to tell you that we have received word that the G. I. Trailer Court is to be given to Frankfort Pilgrim College. This represents a gift of some \$28,000 from our Government.

OUR SUNDAY SCHOOLS: It was our privilege to visit all but one of the Sunday School Institutes on our District, and we felt they were a great blessing. We commend the committee on their good work.

OUR CAMP MEETING: Many believe our recent camp to have been the greatest ever held on these grounds. The prayers of the saints together with willing workers account for the blessings of God upon us. The cooperation of my fellow-superintendents, as always, made my work as chairman of this great Camp the easiest and most enjoyable possible. We praise God for this beautiful spirit of unity.

PERSONAL ACTIVITIES: In my work of caring for the churches I have made 160 visits, preached 200 times, attended 11 zone meetings, held 5 revivals, 4 week-end meetings, conducted 52 radio broadcasts, dedicated two church buildings, attended 4 School Board and Executive Committee meetings, 2 General Board meetings, 2 Pension Board meetings, made 30 business trips, and attended all Council Meetings and all but one Camp Board Meeting.

Faithfully submitted,

MELVIN H. SNYDER

AUDITING COMMITTEE'S REPORT

We, the Auditing Committee for 1948, have examined the books of the Conference Treasurer, Camp Meeting Treasurer and the Young People's Treasurer and believe them to be correct.

We also accept the report of the auditor of the books of the Treasurer of Frankfort Pilgrim College.

Signed:

Rev. J. M. Burcham
Rev. E. A. Poe
Rev. O. Miller

REPORT OF INDIANA CONFERENCE TREASURER

For Year Ending June 30, 1948

Receipts

Balance on hand July 1, 1947.....\$ 14,007.75

Conference Funds:

Budget\$ 18,424.45
 Melvin H. Snyder for Services
 at Ky. Camp 150.00
 Dining Room 50.05

Total.....\$ 18,624.50

Old Peoples Home:

Budget\$ 1,984.17
 Specified 4,310.33

Total.....6,294.50

Frankfort Pilgrim Bible College:

Budget\$ 4,535.28
 Specified 6,967.63

Total.....11,502.91

Conference Home Missions:

Budget\$ 2,834.52
 Specified 4,798.65
 Loans 360.70

Total.....\$ 7,993.87

Old People's Home Farm\$ 4,377.14

1950 General Conference 566.91

Camp Meeting Treasurer 76.25

General Budget 3,650.49

Foreign Missions 32,037.44

General Home Missions 6,488.04

General Headquarters Building Fund 2,141.30

General Sunday School Dept. 306.71

Home Missionary Church Fund 1.00

Conference Sunday School Comm. 291.45

Ministerial Retirement Fund 31.67

Minutes 348.75

Money Transfers 8,196.89

Parsonage—Central District 859.26

Parsonage—Northern District 4,194.41

Parsonage—Southern District 1,272.25

Pilgrim Pension Plan 327.60

Soldiers Fellowship 25.00

Sunshine Gardens 1.10

Young People's Treasurer 54.88

Frankfort School Building Fund 1,648.27

Total\$ 111,312.49

TOTAL RECEIPTS\$ 125,320.34

Disbursements

Conference Funds:

Conference Cooks\$ 65.00
 Conference Secretary Help 45.00
 R. E. Nibarger to Apply on New Auto..... 300.00
 Insurance 22.33
 Miscellaneous 11.99

Total\$ 443.62

Conference Home Missions:

Yeddo	\$ 6.90
Darlington	292.21
Nappanee	600.00
Burns City	70.00
Scottsburg	267.40
Monon	8.50
Swayzee	301.50
Rent on Tent	50.00
Hartsville	25.00
Wire Recorder	190.00
Vevay	25.00
Workers	114.61
Kokomo Second	100.00
Austin	400.00
William Hartley	75.00
New Goshen	15.00
Norway	279.00
Zone No. 6	113.81
Lagrange	150.00
Seelyville Parsonage	615.00
Indianapolis Third	242.80
Sunshine Gardens	220.27
Gas City	315.00
Bedford	200.00
Jasonville	153.71
Spearsville	25.00
Edinburg	65.00
Rising Sun	25.00
Versailles Parsonage	100.00
Sunday School Bus	150.00
Fort Wayne	87.10
Sharon	11.78
Valeene	240.32
Birdseye	200.00
Deputy	75.00
Indianapolis Bates Street	51.71
Orrville	133.50
Cannelton	107.00
Marion South Side	550.00
Connersville	300.00
Centerville	300.00
LaFontaine	35.00
Seymour	20.00
Argos	25.00
Miscellaneous	92.26

Total..... \$ 7,424.38

Old People's Home Farm.....	\$ 3,782.60
Old People's Home	6,537.65
Frankfort Pilgrim Bible College	10,542.17
F. J. Goins, Salary	3,105.00
F. J. Goins, Expense	737.51
R. E. Nibarger, Salary	3,105.00
R. E. Nibarger, Expense	615.73
M. H. Snyder, Salary	3,105.00
M. H. Snyder, Expense	869.14
Asst. Dist. Superintendent's Expense.....	93.38
Carl R. Reed, Conference Secretary, Salary	300.00
E. V. Halt, Conference Treasurer, Salary	200.00
Leonard Fletcher, Statistician, Salary	100.00
District Supt. Telephone Expense	451.43

District Council Expense	152.67	
District Supts. Auto Insurance	252.64	
Miscellaneous	365.09	
Camp Meeting Treasurer	815.26	
General Administration	3,184.58	
Foreign Missions	30,822.56	
General Home Missions	6,458.97	
General Headquarters Building Fund	2,141.30	
General Sunday School Dept.	344.48	
Home Missionary Church Building Fund		
to Home Missions	477.35	
Conference Sunday School Comm.	485.77	
Ministerial Assistance Fund	67.92	
Minutes	466.50	
Money Transfers	9,806.27	
Central District Parsonage	518.89	
Northern District Parsonage	5,158.44	
Southern District Parsonage	815.30	
Pilgrim Pension Plan	175.28	
Soldier's Fellowship	30.59	
Conference Y. P. Treasurer	94.73	
Frankfort School Building Fund	1,353.69	
Total	\$ 97,532.89	
TOTAL DISBURSEMENTS		\$105,400.89
Balance on hand July 1, 1948		\$ 19,919.45
The above cash balance is divided as follows:		
Cash on Hand (Indiana National Bank)	\$ 19,919.45	
Cash Specified on Various Accounts	10,902.17	
Actual District Funds on Hand		\$ 9,017.28
District Funds	\$ 15,983.14	
Accounts Not Satisfied	6,965.86	
Actual District Funds on Hand		\$ 9,017.28
(Signed) E. V. HALT,		
Conference Treasurer		

REPORT OF CAMP MEETING TREASURER **For Year Ending June 30, 1948**

Receipts

Balance on hand July 1, 1947		\$ 10,007.41
Payment on Cottages	\$ 630.00	
Camp Meeting Dues	191.00	
Home Missions	140.06	
Foreign Missions	467.77	
Tabernacle Offerings	3,367.80	
New Dormitory	268.41	
Song Books	117.55	
Meals	919.58	
Lunch Stand	1,101.33	
Rooms	968.17	
Workers' Tickets	49.50	
Electricity	72.25	
District Treasurer—District Parsonage	2,000.00	
Miscellaneous	37.89	
Total Receipts		\$ 10,331.31
Grand Total		\$ 20,338.72

Disbursements	
Home Missions	\$ 140.06
Foreign Missions	467.77
Evangelists	925.00
Food Commodities	2,752.00
Ice Cream for Lunch Stand	896.55
Camp Cooks	235.00
Camp Ground Expense	883.86
Song Books	112.50
Traveling Expense	437.99
Building Material and Hardware	2,319.49
Insurance	234.61
Light and Power	119.93
District Parsonage	4,000.00
District Treasurer, School Buildings	4,000.00
Miscellaneous	234.96
Total Disbursements	\$ 17,759.72
Balance on Hand July 1, 1948	\$ 2,579.00

ANGUS R. JEFFERS,
Camp Meeting Treasurer

FRANKFORT PILGRIM COLLEGE CORPORATION
Frankfort, Indiana

STATEMENT OF INCOME AND EXPENSES
August 1, 1947, to July 31, 1948

INCOME:

Income from Tuition and Fees	\$ 16,518.62
Income from Board and Room	19,156.72
Total Income from Tuition and Lodging.....	\$ 35,675.34
Less: Discounts	1,100.25

NET INCOME FROM TUITION
AND LODGING

\$ 34,575.09

Income from Books and Supplies	\$ 7,202.56
Purchases of Books and Supplies	6,365.68
Income from Utilities	\$ 836.88
Accrued to Students for Work to be Performed	1,719.52
Income from Gifts	6,463.00
Income from Farm	13,500.13
Bad Debts Recovered	6,084.34
Income from Bus Purchase Donations	55.70
Income from Equipment Purchase Donations	938.50
Income from Miscellaneous Sales and Services	828.42
Income from Senior Class for Movie Projector	212.22
Miscellaneous Income	167.67
Increase in Inventory of Groceries and Supplies.....	230.32
	2,802.92
TOTAL INCOME	\$ 68,414.71

EXPENSES:

Decrease in Farm Inventory	\$ 333.59
Repairs	961.68
Lights, Water, Telephone, Fuel, Gas	6,483.97
Salaries of Officers and Teachers	25,442.90
Student Wages in Excess of Charges	9,625.04
Traveling Expenses	540.13

Farm Expenses	3,732.00
Lumber for Barn on District School Farm	210.75
Groceries and Supplies	6,899.61
Office Supplies	452.42
Advertising	290.00
Bus Maintenance	177.46
Classroom Supplies and Typewriter Rentals	485.35
Gasoline for Farm and School	827.39
Insurance	375.40
Janitor Supplies	393.33
Jeep Maintenance and Operation	367.52
Kitchen Supplies	69.05
Postage	115.26
Library Expense	92.04
Rent Expense	155.12
Miscellaneous Expenses	195.76
Interest Expense	152.67
School Annual and Paper	185.00
Bad Debt Expense	1,321.66
TOTAL EXPENSES	\$ 59,885.10
NET INCOME FOR YEAR	\$ 8,529.61

In addition to the above expenses, there were also cash expenditures for:

Farm Equipment	\$ 392.80
General College Equipment	4,927.65
Improvements to Shepherd Hall	119.10
Mortgage Payable on Shepherd Hall	267.33

FRANKFORT PILGRIM COLLEGE CORPORATION
Frankfort, Indiana
July 31, 1948

BALANCE SHEET
Assets

Current Assets:

Cash on Hand	\$ 127.59
Cash in The Farmers Bank	2,289.94
Accounts Receivable	6,582.30
Inventory of Groceries and Supplies	3,859.61
Inventory of Farm Produce and Animals	4,318.41
Total Current Assets	\$ 17,177.85

Fixed Assets: (NOTE QUALIFICATIONS OF EXAMINER)

Farm Equipment	\$ 2,390.62
General Equipment:	
Cement Block Machine	\$ 1,038.06
Dormitories and Kitchen	2,710.29
Music Hall	835.00
Shepherd Hall	200.00
Library	5,020.48
Administration Building	1,200.00
Office	953.61
Laboratory and Shop	294.60
Chicken Brooder	50.00
Miscellaneous	715.99
Bus	1,560.00
Classrooms	1,083.12
Dining Room	332.66
Grounds	134.50
Stoker and Installation	790.53
	16,918.84

Real Estate entrusted to the use of the College but titles are held by other organizations:

Shepherd Hall (cost) College is paying	\$ 5,878.11
Two Teachers Cottages (College paid this)	4,200.00
Improvements in 1947 (College paid)	350.00

Following buildings are listed as appraised in District Minutes for 1945:

Administration Building	\$ 20,000.00
Dormitories	28,000.00
Chapel and Buildings	15,000.00
Shops and Cottages	8,000.00
Real Estate	7,000.00
Increase in value by repairs and rise in values as shown by 1945 minutes	10,920.00
	\$ 99,348.11

Total Fixed Assets	\$118,657.57
--------------------------	--------------

TOTAL ASSETS	\$135,835.42
--------------------	--------------

Liabilities

Current Liabilities:

Accounts Payable	\$ 1,934.46	
Bus Repair Fund	188.97	2,123.43

Fixed Liabilities:

Mortgage Payable	\$ 2,799.60	
Real Estate Entrusted to Use of College	99,348.11	102,147.71

TOTAL LIABILITIES	\$104,271.14
-------------------------	--------------

CAPITAL OF FRANKFORT

PILGRIM COLLEGE	31,564.28
-----------------------	-----------

TOTAL LIABILITIES AND CAPITAL

\$135,835.42

NOTE: The college has verbal claims to the first \$10,428.11 of the Real Estate items. These claims are not substantiated in written legal form.

REPORT OF THE EDUCATIONAL BOARD

We, the members of the Educational Board, under the leadership of the Holy Spirit; have prayerfully, carefully, and impartially to the best of our judgment endeavored to perform our duties according to the Manual of the Pilgrim Holiness Church.

We have given due consideration to the educational qualifications of 123 candidates.

Signed) LESTER L. HENRY, Chairman
CARRIE S. GICK, Secretary

Special Sections from the Manual

Section 210, paragraphs 2, 3, and 4:

Those entering a ministerial office shall immediately enter upon the prescribed course of study and pursue same until completed. To this end they shall place themselves under the direction of the District Educational Board, which has charge of this work, unless the same course, or its equivalent, is taken in school.

Examinations required by the District Educational Board shall be submitted in writing and shall be conducted at the time and place of the annual conference or during the year upon completion of a book or subject, either personally or through the mails.

The passing grade of any study shall not be less than an average of 70 per cent.

Section 154:

No person shall be eligible for ordination until first having served at least two years in active ministry.

Section 155:

The licentiate who has held his license at least three years and has successfully completed the required course of study, shall be eligible for ordination as a minister of the Gospel, unless the district council will have deemed it wise to have ordained before the expiration of the three year period.

Section 149, paragraph 1:

All licensed ministers failing to complete and report on at least two subjects a year in their required Course of Study, for two consecutive years, will automatically forfeit their licenses, unless in the judgment of the educational board an exception shall be made. The district council shall have power to review and pass upon such action when it deems advisable. (Section 109, paragraph 2).

Study Course for the Year 1948-1949

(Students are requested to write to the following persons in charge of the subjects in which they are interested.)

LOCAL PREACHER'S COURSE

First Year

Books to be studied:

1. Guide to the Study of the Old and New Testaments.—Huffman.
2. New Training for Service.—Sharp.
Write to Rev. Carrie Gick, 230 E. Ohio St., Indianapolis, Indiana.
3. All About the Bible.—Collett.
Write to Rev. Lester L. Henry, 651 E. Boone St., Frankfort, Indiana.
4. Elements of English Composition.—Center and Holmes.
Write to Rev. Harry Shepherd, 851 S. Third St., Frankfort, Indiana.
5. Galilean Fisherman.—Witmer.
Write to Rev. Walter Daugherty, 507 Hinman St., Columbus, Indiana.

Books to be read:

1. Bible.—Genesis to Isaiah.
2. Entire Sanctification.—Ruth.
3. Story of the Christian Church.—Hurlbut.
4. Increasing Church School Attendance.—Gage.

Second Year

Books to be studied:

1. The Bible Basis of Missions.—Glover.
Write to Rev. Carrie Gick, 230 E. Ohio St., Indianapolis, Indiana.
2. Scriptural Holiness.—Compiled by Rev. R. G. Flexon.
Write to Rev. Flo Andrews, Osgood, Indiana.
3. Jesus is Coming.—Blackstone.
Write to Rev. Carrie Gick, 230 E. Ohio St., Indianapolis, Indiana.
4. Binney's Theological Compend.
Write to Rev. Flo Andrews, Osgood, Indiana.
5. Holy Spirit.—Huffman.
Write to Rev. Carrie Gick, 230 E. Ohio St., Indianapolis, Indiana.

Books to be read:

1. Bible.—Isaiah to Revelation.
2. Redemption Completed.—Huffman.
3. Life of Christ.—Stalker.
4. Life of Paul.—Stalker.
5. Christian Purity, Abridged.—Foster.

LICENSED MINISTER'S COURSE

First Year

Books to be studied:

1. Bible Study by Books.—Sells.
2. Pilgrim Holiness Manual.
Write to Rev. Walter Daugherty, 507 Hinman St., Columbus, Indiana.
3. Christ's Life and Ministry.—Winchester.
4. Bible Doctrines.—Smith.
Write to Rev. Flo Andrews, Osgood, Indiana.
5. English in Action, Book I.—Tressler.
Write to Rev. Harry Shepherd, 851 S. Third St., Frankfort, Indiana.

Books to be read:

1. Living Messages of the Books of the Bible.—Morgan.
2. The Crisis of the Christ.—Morgan.
3. Foundations of Doctrine.—Jessop.
4. Impressions.—Knapp.
5. Preacher and Prayer.—Bounds.

Second Year

Books to be studied:

1. Ruth's Romance of Redemption.—Boone.
2. Teacher's Training Lessons.—Hurlbut.
Write to Rev. Walter Daugherty, 507 Hinman St., Columbus, Indiana.
3. Binney's Theological Compend.
Write to Rev. Flo Andrews, Osgood, Indiana.
4. A System of Christian Evidence.—Keyser.
Write to Rev. Walter Keeney, 1534 Fulton Ave., Evansville, Indiana.
5. Jesus is Coming.—Blackstone.
Write to Rev. Carrie Gick, 230 E. Ohio St., Indianapolis, Indiana.

Books to be read:

1. The Tongue of Fire.—Arthur.
2. Perfect Love, Abridged.—Wood.
3. General Biblical Introduction.—Miller.
4. The Messianic Hope in Both Testaments.—Huffman.
5. My Message to Sunday School Workers.—Lawrence.

Third Year

Books to be studied:

1. Bible History.—Blaikie and Matthews.
2. Elements of Divinity.—Ralston.
Write to Rev. Walter Keeney, 1534 Fulton Ave., Evansville, Indiana.
3. Homiletics and Pastoral Theology.—Hogue.
4. Lessons in Parliamentary Procedure.—Plummer.
Write to Rev. Lester L. Henry, 651 E. Boone St., Frankfort, Indiana.
5. Bible Atlas.—Hurlbut.
Write to Rev. Harry Shepherd, 851 S. Third St., Frankfort, Indiana.

Books to be read:

1. Progress of World-Wide Missions.—Glover.
2. The Preacher, His Life and Work.—Jowett.
3. Faith Papers.—Keene.
4. The Way to Pentecost.—Chadwick.
5. Ministerial Ethics and Etiquette.—Harmon.

Fourth Year

Books to be studied:

1. Voices from Rocks and Dust Heaps of Bible Lands.—Huffman.
2. Psychology.—Ruch.
Write to Rev. Lester L. Henry, 651 E. Boone St., Frankfort, Indiana.
3. Church History.—Zenos.
Write to Rev. Flo Andrews, Osgood, Indiana.
4. Problems of a Changing Social Order.—Gillette and Reinhardt.
Write to Rev. Harry Shepherd, 851 S. Third St., Frankfort, Indiana.

5. A System of General Ethics.—Keyser.

Write to Rev. Walter Keeney, 1534 Fulton Ave., Evansville, Ind.

Books to be read:

1. The Harmony of Science and Scripture.—Rimmer.
2. Beacon Lights of Faith.—Wimberly.
3. From Chaos to Character.—Marston.
4. American Social Problems.—Odum.
5. A Manual of Christian Ethics.—Wimberly.

LICENSED DEACONESS' COURSE

First Year

Books to be studied:

1. Bible Study by Books.—Sell.
2. Teacher Training Lessons.—Hurlbut.
Write to Rev. Walter Daugherty, 507 Hinman St., Columbus, Indiana.
3. Bible Doctrines.—Smith.
Write to Rev. Flo Andrews, Osgood, Indiana.
4. Progress of World-Wide Missions.—Glover.
Write to Rev. Walter Keeney, 1534 Fulton Ave., Evansville, Indiana.

Books to be read:

1. A Story of the Christian Church.—Hurlbut.
2. Plain Account of Christian Perfection.—Wesley.
3. Building the Home Christian.—Huffman.
4. Deeper Experiences of Famous Christians.—Lawson.

Second Year

Books to be studied:

1. Foundations of Doctrine.—Jessop.
Write to Rev. Harry Shepherd, 851 S. Third St., Frankfort, Indiana.
2. All About the Bible.—Collett.
Write to Rev. Lester L. Henry, 651 E. Boone St., Frankfort, Indiana.
3. Galilean Fisherman.—Witmer.
Write to Rev. Walter Daugherty, 507 Hinman St., Columbus, Indiana.
4. Bible History.—Blaikie and Matthews.
Write to Rev. Walter Keeney, 1534 Fulton Ave., Evansville, Indiana.

Books to be read:

1. Perfect Love, Abridged.—Wood.
2. Bible History of World Government.—Smith.
3. Impressions.—Knapp.
4. Life of Christ.—Stalker.

Please note: There are some changes in the Study Course from that listed in the Manual or General Conference Minutes. Please write to the instructors as listed above for information.

The following recommendations were brought in by the Resolutions Committee:

1

We recommend that all persons taking the preacher's study course shall have their examinations in the hands of their instructors by July 16th of each Conference Year. No teacher will be expected to grade examinations after this time.

2

We recommend that at each annual Camp Meeting on the last Thursday, Friday, and Saturday, there shall be one daily session of the Educational and Examining Boards for the purpose of the examination of ministers. All ministers knowing themselves due to appear before these boards are urged to be present.

We further recommend that the time of each session shall be announced from the platform.

3

Each minister pursuing our course of study shall mail 25 cents with each request for questions on each subject. Those failing to comply with this recommendation will not receive their questions.

We recommend that the following paragraph be inserted in our Minutes at the end of the Educational Committee's report.

"Inasmuch as the teachers of the Ministerial Study Course are doing their work gratis and in the midst of other pressing duties, it is requested that each applicant apply for questions as early in the year as possible, and that a reasonable length of time be allowed for the questions to be returned to the applicant."

REPORT OF THE RESOLUTIONS COMMITTEE

Church Government

1.

We recommend that the annual business of the church be closed on June 30 of each year.

2.

Inasmuch as it is impossible for the local church to send Conference funds to the Conference Treasurer by June 30, we recommend that the Treasurer hold his books open until July 15.

3.

We recommend that each church provide a parsonage with telephone, and if possible, other utilities also be furnished as recommended by the Local Church Board.

4.

We recommend that where parsonages are not equipped with heating device, window shades, kitchen and bathroom floor coverings that provision be made for the same by the local Church.

5.

We recommend that where churches and parsonages are located in cities that the location of the church and parsonage appear in our Minutes. We further recommend if possible, that where parsonages are equipped with phones, that the name of the pastor and Pilgrim Holiness Church be listed in the phone book.

6.

We recommend that no Local Church Board endorse for Conference license anyone who is not willing to give full time to the ministry of God's Word. We further recommend that the Examining Board pass no candidates for Conference license who fails to give evidence of a Divine Call to the ministry or a willingness to give full time to the same.

7.

Whereas, we have many able-bodied licensed and ordained ministers, who are employed in other than ministerial work, and seldom if ever preach, we recommend that the Examining Board be instructed to draw the lines closer on such individuals and that no one who is not active in the ministry be recommended for ordination.

8.

We recommend that the Sacrament of the Lord's Supper be observed at least once each quarter by our local churches.

9.

We recommend that each District elect a full time Superintendent and an Assistant.

10.

We recommend that the Assistant Superintendents be selected from the pastors of their respective Districts. We further recommend that the District Council nominate three men from each District from which the Assistant Superintendents shall be elected.

11.

We recommend that the District Superintendents with their Assistants together with the Zone Chairmen in their respective Districts shall be responsible for the promotion of Home Missionary Work.

12.

We recommend that there be District Parsonage Committees composed of the District Superintendent, Assistant Superintendent, and Zone Chairmen, whose duty it shall be to supervise the liquidation of their parsonage debt, and also be responsible for the maintenance of the parsonage.

13.

We recommend that the Conference Council consist of 13 members comprised of the three District Superintendents, their Assistants, the Conference Secretary, the Conference Treasurer, one Advisory member from each District, and two additional members from the District or Districts which are unequally represented.

14.

We recommend that the District Superintendents alternate in presiding at Council Meetings unless otherwise required by emergency.

15.

We recommend that the District Superintendents be members of the Camp Meeting Board by virtue of their office.

16.

Whereas many of the ministerial and lay delegates leave immediately after the election of officers and whereas there is important unfinished business which is left to a small number of the delegates of the Conference, therefore

Be it resolved that the election of officers be held just preceeding the Council Report on Placement of Pastors.

17.

Whereas in many of our building projects there seems to be poorly formulated plans due to incompetent committees which has resulted in some poorly constructed buildings, therefore

Be it resolved that before constructing church buildings or parsonages that plans and specifications be approved by the conference council or by a committee appointed by same.

18.

We recommend that the following recommendations in our 1947 Minutes be deleted:

Church Government Nos. 9, 10, 11, 14, 18. 19.

Educational and Examining Board Nos. 3, 5.

Camp Meeting and Conference Nos. 6, 13, 14, 22, 24, 28.

Sunday School

1.

The duties of the Conference Sunday School Board in harmony with the manual of the Pilgrim Holiness Church shall be as follows:

1. The Conference Sunday School Board, together with Zone Presidents, shall arrange for Sunday School Conventions to be held in the respective Zones during the year.

2. To promote and encourage the Sunday School work throughout the Conference.

3. To present an annual report to the Conference which shall include the following:

- a. A statement of the work accomplished during the year.
 - b. A statement of the general condition of the Sunday School work in the Conference.
4. The Council shall direct the Conference Treasurer to take care of all finance incurred by the Conference Sunday School Board.
 5. The Conference Sunday School Board shall be amendable to the Council.
 6. The Council shall have the right to remove, or cause to be removed, any member of the Conference Sunday School Board who, in the judgment of such Council, is not in harmony with the teaching of the Manual of the Pilgrim Holiness Church.
 6. If for any reason there is a vacancy on the Conference Sunday School Board, the Council, by a majority vote, may fill the vacancy.
 7. The Conference Sunday School Board shall work in conjunction with the General Sunday School Secretary in promoting the annual Rally Day, etc.
 8. To have published each quarter a Conference Sunday School sheet showing the attendance of each Sunday School in the Conference for the quarter, this sheet to be sent to each pastor and Sunday School Superintendent in the Conference.
 9. We recommend that where possible each local church conduct a summer Vacation Bible School.

Camp Meeting and Conference

1.
We recommend that all those desiring to pay for their board by serving as a worker during the Camp Meeting be required to pay a registration fee of \$1.00 when accepted as a worker by the Camp Meeting Committee.

2.
We recommend that Conference Ministers and their wives and dependent children be granted workers tickets for their meals during the Camp Meeting.

We further recommend that those physically able be assigned to their respective duties and all failing to fill their assignment shall have their workers tickets forfeited.

3.
We recommend that the Camp Meeting Secretary issue no workers tickets to Laymen except as he is authorized by the Superintendents of the various departments.

4.
We recommend that all proposed building programs or all major changes on the State Camp Ground be endorsed by a two-thirds vote of the Council, Camp Meeting Board, and the School Board.

We further recommend that all future constructions be made to conform to State and Local codes.

5.
We recommend that the Camp Meeting Board pass upon all improvements or construction not entailing an expense of more than \$1,000.00.

6.
We recommend that our Camp Meeting begin on the second Friday of August each year.

7.
We recommend that there be a Camp Meeting Purchasing Committee consisting of the three District Superintendents, one advisory member, who

shall be appointed by the Camp Meeting Board, and the Superintendent of the department for which purchase is made.

We further recommend that all bills for said purchase be placed in the Camp Meeting Treasurer's hands at the close of the Camp Meeting.

8.

We recommend that all who rent rooms during Camp be advised to bring their own bedding.

9.

We recommend that in case the Conference considers changing or increasing the amounts in financial recommendations by the Ways and Means Committee that Ways and Means Committee may appeal to the Conference for a Committee to investigate the financial balance of the treasury before voting on the change, this investigation committee to consist of one member from the Conference Council, one member from the Ways and Means Committee, and one member chosen from the Conference.

10.

We recommend that only ministers, their wives and unmarried dependent children and lay delegates be given entertainment during Conference. All entitled to this entertainment shall be duly registered and given cards of recognition. For all other entertainment the same rate shall prevail as during Camp Meeting.

11.

We recommend that there be a Publishing Committee composed of the Conference Secretary and two appointee members. It shall be the duty of this committee to publish the Conference Minutes.

12.

We recommend that each church give the purchase price of one cot pad and one sheet for each 50 members or major fraction thereof.

13.

We recommend that the Conference Council be responsible for providing needed help for the kitchen and dining room during Conference.

14.

Whereas some of our pastors and families have found it difficult if not impossible to secure a room on the Camp grounds during Camp, therefore, we recommend that our ministers be given more consideration in the rental of rooms, applying only to the new dormitory.

15.

We recommend that the water and sewer service be installed under the directions of the Camp Meeting Board.

16.

We recommend that there be one Conference Statistician.

17.

We recommend that the Conference Council in conjunction with the School Board formulate a plan for the maintenance of the buildings and equipment, for all Conference property.

18.

We recommend that the Camp Meeting Board provide and post signs on the Camp ground that they deem advisable such as "No Smoking," "No Parking", etc.

19.

We recommend that caution be taken to not over-estimate the values of Church property in our Annual Reports.

20.

We recommend that the Conference go on record as interpreting I Peter 3:3, where it speaks of the wearing of gold, to mean all rings including wedding and class rings.

21.

We recommend that where a man is inadvertently placed on more Boards and Committees that he can well serve that the Conference Council be authorized to make proper adjustment in such Committees.

22.

We recommend that the camp meeting board appoint a committee to see that there are two blueprints made; one showing the plumbing and sewerage system, and the other showing the wiring of the camp grounds, and buildings.

23.

We recommend that no District levy any assessments, other than Conference assessments, without the consent of the Conference Council.

24.

Whereas our deceased Ministers are only honored by a brief memorial service during conference and

Whereas it seems that there should be something of a more permanent nature, therefore be it resolved that we provide for a Memorial section in our Minutes and publish a brief history of the life work of those of our Ministers who have died during the year.

Be it further resolved that the Conference Secretary gather the needed information of each of our Ministers by sending out a questionnaire. This information is to be kept on file and kept up to date by making the needed additions at the close of each conference.

25.

We recommend that the Memorial Service be held at the beginning of the evening session of the first day of Conference.

26.

We recommend that a committee of three composed of our electrician, Rev. Virgil Camp, our plumber, Rev. Walter Speck, and our conference secretary, Rev. Carl Reed formulate a set of rules governing remodeling and construction of cottages, plumbing, and wiring. In remodeling or building cottages a permit from the plumber and the electrician must be secured before construction is started.

We further recommend that anyone failing to meet these requirements after being inspected by this committee shall be required to make the necessary changes or their lease forfeited.

27.

We recommend that there be a fee for each house car, car or trailer which is on the camp ground for three months or more during the year for the purpose of maintaining the roads.

28.

We recommend that the camp meeting board appoint an inspector for camp grounds and buildings who shall make periodic inspections and shall have the authority to enforce such regulations that shall be delegated him by the camp meeting board.

29.

Whereas there is a growing number of cottages being constructed upon the camp grounds and whereas these cottages and buildings are helping to meet the housing needs of the school and whereas our properties are part of a non-profit organization, and whereas there is the possibility that some are not aware of the limitations of such an organization, and hereby may make charges for use of cottages which are out of harmony with our organization, therefore

Be it resolved that an appraisal committee be appointed by the Camp Meeting Board for the purpose of appraising the camp cottages and trailers

to determine the maximum amount of remuneration to be received from the same during the school year.

30

We recommend that the Camp Meeting Board take immediate steps to prepare the west side of our conference ground for future camp meeting purposes.

31

We recommend that upon the death of a Conference Minister or his wife, that the conference secretary be notified at once, who shall notify all conference pastors by telephone or telegraph.

32

Whereas the Conference Council has considerable business to care for between conferences, and such business is important and more or less unknown to the members of the Conference, therefore

Be it resolved that the Conference Secretary read in review to the assembled Conference the major actions of the Council during the preceeding year.

Zone Work

1

Inasmuch as the Zone Meetings have been beneficial in advancing the spiritual, educational, and doctrinal interests of the Conference, we recommend they be continued.

We further recommend the Zone Chairmen be elected by the preachers and lay delegates.

2.

Whereas as the need arises for a district to change its zone boundaries because of receiving new churches and distance, therefore be it resolved that there be a committee appointed by the District Superintendent to work out the rezoning of that district to be ratified by the Conference.

Educational and Examining Board

The recommendations brought in regarding this work are printed under the report of the Educational Board at its request.

Pastoral

1.

We recommend that each pastor be granted a two weeks vacation with pay.

2.

We recommend that no pastor call an evangelist outside of our church without the approval of the District Superintendent.

3.

We recommend that pastors of deceased members of our District Conference bring to the Memorial Committee a copy of the obituary of the deceased and any other information that is available, this information to be used in our Annual Memorial Service.

Young People

1.

We recommend that the Young People's Committee consisting of the Conference Young People's Secretary, Treasurer, and zone chairman make plans for a young people's convention.

We further recommend that this convention be held the third Thursday of June each year.

2.

We recommend that there be District Young People's conventions and zone rallies.

Miscellaneous

1.

We recommend that the Conference farm be under supervision of the Conference Council.

2.

We recommend that immediately following the Conference the Secretary mail to each pastor an itemized postal notice of the financial requirements of the church for the year.

3.

We recommend that the Ways and Means Committee and the Resolutions Committee meet at the call of the District Superintendents, who may also meet with the Committee, prior to the next Conference.

4.

We recommend that 1500 copies or more of the Conference Minutes be provided within 30 days after the Conference adjourns. Each church must send in the money with its order.

5.

We recommend that we have a Thanksgiving Harvest Day for the School. Such day shall be set aside for the various zones to bring in their canned goods and produce of all kinds for the School.

6.

Whereas example is more powerful than precept and

Whereas our Officials and Ministers are looked upon as examples of standards for our Church, therefore

Be it resolved that the Indiana Conference call attention to Sec. 65, page 49 of our Manual and urge our Ministers and Officials and their families to exemplify these standards.

We further recommend that petition be made to the General Executive Committee to consider the advisability of our publishing house stocking hosiery.

7.

We recommend that the three District Superintendents be members of the School Board by virtue of their office.

We further recommend that they form a committee to nominate two men from each district from which one shall be elected by the Conference.

We further recommend that the Conference elect two members at large, which shall comprise the School Board.

8.

Whereas there was lack of time to give proper consideration to Rev. Moreland Yundt's recommendation

Be it resolved that this recommendation be turned over to the chairman of the Resolutions Committee for consideration at the next Conference.

REPORT OF THE WAYS AND MEANS COMMITTEE

Local Church Financial

1.

We recommend that the Conference budget consist of 10% of all money raised by the local church, Sunday School, and 5% from the Young People's

Society; except that raised for Missions, general budget, building funds, and all funds raised for specified Conference interests. Building fund purposes shall be interpreted to include rent on parsonages and churches and money paid on contracts of the same.

2.

We recommend that the Conference Budget be prorated as follows: Conference fund, 65%; Old People's Home, 7%; Frankfort Pilgrim College, 16%; Home Missions, 10%; and General Conference, 2%.

3.

We recommend that each church raise five cents per member per month for Home Missionary Work and Church Extension, money to be paid to the Conference Treasurer.

4.

We recommend that each church help the Frankfort Pilgrim College by sending to the Conference Treasurer each month an amount equal to 1% of the gross receipts of the local church treasury for the current month for each church which has an annual income up to and including \$3,000.00 and 2% for all churches with an annual income over \$3,000.00.

District Financial

1.

We recommend that our regular Conference stenographer be paid \$30.00 and that the Secretary be authorized to secure additional helpers at the rate of \$20.00 per person.

2.

We recommend that our District Superintendents be paid a salary at the rate of sixty-five (65.00) per week plus mileage.

3.

We recommend that our Assistant District Superintendents be paid at the rate of \$7.50 per day plus mileage for each day's service.

4.

We recommend that the Conference Secretary be paid one hundred twenty-five dollars (\$125.00) for his service for the year.

5.

We recommend that the Conference Treasurer be paid \$400.00 for his services for the year.

6.

We recommend that the Conference Statistician be paid \$100.00 for his services for the year.

7.

We recommend the school be authorized to launch a drive to help finance the new buildings now under construction.

8.

We recommend that the standard mileage rate be fixed at 4 cents per mile.

9.

We recommend that each church raise fifty cents per member per year for the operating expense of the Old People's Home.

10.

Inasmuch as the Pension Plan would entail considerable expense to make it fully operative in our District, we recommend that our District go on record as favoring the Plan: We further recommend that the matter be left on a voluntary basis, both as to ministers becoming participating members and churches desiring to participate in the Pension Plan.

11.

Whereas our school has been running on a close margin financially this past year, we recommend this Conference authorize the treasurer to make a gift of \$1,000.00 to the school.

Young People's Work

1.

We recommend that each young People's Society be requested to send an offering for the Young People's Rally to the Conference Young People's Treasurer; also that churches without organized societies be invited to send an offering for the same.

2.

We recommend that each Young People's Society send six per cent of all money raised in the regular offering to the State Young People's Treasurer to finance the work of the Conference Young People's Organization.

Camp Meeting and Conference

1.

We recommend that the Camp Meeting Chairman investigate the possibility of having liability insurance on our Camp Ground and if the Camp Board deems it advisable, to secure the same.

2.

We recommend our Conference Secretary investigate the possibility of securing ministerial group hospitalization insurance at reasonable cost.

3.

Whereas there is a need of improved roads on our camp ground, we recommend a fee of \$5.00 be collected from all persons owning a car who live on the grounds for a period of three months or more out of each conference year. This money to be used exclusively for improving necessary roads.

We further recommend an equal amount be paid by the camp meeting treasurer for this purpose.

4.

We recommend where repairs are necessary on the buildings used by the school, the material be furnished by the camp meeting and the labor by the School.

REPORT OF MEMORIAL COMMITTEE OF INDIANA CONFERENCE OF PILGRIM HOLINESS CHURCH, 1948

1.

Another camp is history, but the memory lingers long in the hearts of all who were privileged to attend, for who could forget the God-annointed ministry of Revs. R. G. Flexon and R. W. Wolfe, who poured on the truth in language easily understood; the Spirit-filled ministry of our children's worker, Miss Deborah Hoover, the shouts of praise and victory, the wonderful altar services, and everything else that goes to make this camp meeting the best we've ever had;

Therefore, in deep and humble appreciation to Jesus, Our Savior, be it resolved that we stand with uplifted hands and sing "My Jesus I Love Thee".

2.

Fortunate indeed is the Indiana Conference in having the venerable and able song evangelist, Rev. C. D. Jester as well as the youthful Walter Goins, to lead the inspirational singing of this great camp and since God has blessed us with such splendid talented young people and older ones as well, who have given their talents to the Lord, we feel that a word of commendation is due the members of the orchestra who have worked together so well, and cooperated with our song evangelists, giving us one of the best orchestras we have ever had. Let us pray that they may never hang their harps upon the willows.

3.

Since God has blessed our Conference with men so well qualified to serve on the Camp Meeting Board in each of the various Departments, who with their helpers have labored untiringly to make possible this great Camp Meeting; therefore, be it resolved that we show our appreciation by saying "God Bless Them".

4.

Feeling that a word of appreciation should be given the Frankfort Morning Times and the Lafayette Courier Journal for their courtesy to our Camp Meeting and Conference we recommend that our Conference Secretary be authorized to send them a note of thanks.

5.

Since, in these the closing days of the dispensation, God has honored the Pilgrim Holiness Church with a great leader in the person of Rev. L. W. Sturk, who stresses quality rather than quantity, spiritual freedom in these times of formality and lukewarmness, and, who carries a burden for the spiritual needs of our camps and conferences, therefore, be it resolved, that we as a conference hold up his hands in prayer, that we like the children of Israel under the leadership of Moses, go forward in the Name of the Lord.

6.

We are thankful for the splendid leadership of our District Superintendents, the Rev. Ralph Nibarger, the Rev. Floyd Goins, and the Rev. Melvin Snyder, who so harmoniously labored together in the advancing of the Kingdom of God in our Districts. For their cooperation and untiring efforts let us express our sincere appreciation by a hearty "Amen".

7.

We are indeed grateful to God for the standards of our school, Frankfort Pilgrim College, and for the Godly leadership of our beloved President, Rev. R. K. Story, his faculty and workers and for the progress and growth it has shown both spiritually and numerically; Therefore be it resolved that to show our appreciation let us not only pray and give but urge our young people to attend.

8.

Whereas God in His Providence has called to their eternal reward four of the members of our Old People's Home: Sister Amanda Neal, Sister Anna Webb, Sister Lura Culley, and Sister Margaret Clark, therefore be it resolved that we stand for a moment of silent prayer in honor of these departed ones followed by a prayer by Brother Goins.

9.

Since the Alcoholic Beverage Industry, the greatest blight on mankind today is as evil in its plans and purposes as ever before and since the Beverage Industries are working night and day to counteract and destroy all Christian actions of the church and home and to put a bottle in the hands of every young man and woman to wreck their lives and destroy their souls, and since many steps are being taken to again dry up this fair country of ours, and since Indiana is the only state east of the Mississippi that has no form of Prohibition or Local Option; be it resolved that we as The Indiana Conference of the Pilgrim Holiness Church go on record to not only pray and preach and live prohibition but put legs on our prayers and sermons by taking advantage of every opportunity to strike a death blow to the Wet Forces at the place where it counts most, "The Polls".

10.

Deeply appreciating the very efficient work done by Miss Clyde Titus, a State registered nurse, who not only gives her services, but also dispenses gratis a considerable amount of medicine, let us show our appreciation by a hearty "Thank you".

(Signed) MRS. BEULAH J. ARNETT
MRS. MARK STOREY
EULA E. KENNEDY

REPORT OF THE SUNDAY SCHOOL COMMITTEE

We, the Sunday School Committee of the Forty-fifth Annual Indiana Conference, report the following activities and findings in the Sunday Schools of the Indiana Conference of the Pilgrim Holiness Church.

Taking our responsibilities seriously we set out to fulfill the obligations required of us. Our concern was to arouse every pastor and local Sunday School worker to see the important part a spiritual, interesting and growing Sunday School plays in the future growth of the Pilgrim Holiness Church.

Our Program was two-fold in its objectives. First, we wanted to better the quality of the schools as an inducement to the unsaved to become regular attendants. Second, we wanted to increase the attendance, not as many suppose to count numbers, but to reach all the unevangelized who will not attend our church services but will attend our Sunday Schools.

In the three districts comprising our Conference we now have one hundred forty-two schools divided among the three districts as follows: forty-four schools in the Northern District, forty-nine in the Central District and forty-nine in the Southern District.

One hundred ten church schools in the Conference responded to the Committee's request for a report of their fourth quarter's and year's attendances. Thirty-five Northern schools reported, thirty-eight Central schools mailed their reports and thirty-seven from the Southern were on time for the final report.

The Northern District reopened two schools that had been closed and started one new school. The Central District had one new school and closed one. The Southern District brought in four new schools for the year.

The 110 schools reporting, reported a total average of 7986 per Sunday in attendance with an average per church of 72.6 in attendance.

Last year, 108, of these 110, reported a total average, weekly, of 7528 with a weekly church average of 69.7 per church.

The gain for the year per church was 2.9 pupils.

Sixty-seven of the one hundred ten churches reporting, reported a gain in attendance.

The committee purchased and paid for a Mimeograph to facilitate the printing of the reports required by the conference.

The response to the request for attendance reports of attendances to the General Sunday School Rally last Fall was so poor we are unable to give a report of it.

A bi-monthly newsheet was printed to convey the Conference Sunday School news to the various churches of the Conference.

Twenty-one Sunday School Institutes were conducted by the Committee in the Conference. Each Institute was geographically located so that no church would have much farther than twenty-five miles to drive to attend. Four to seven churches attended each Institute. The Committee wrote and mimeographed twelve hundred booklets as aids to building better schools and these were distributed among the pastors and local workers at the Institutes. There were displays of books and helpful materials that aid in conducting a thriving Sunday School. The total attendance to these Institutes far exceeded the attendances to the daytime Conventions previously held.

Several postal surveys for information were made and revealed many things. Statistical surveys revealed that over fifty per cent of our attendance are children under fourteen years of age. We discovered that there are about fifty Sunday School Buses in operation in the Conference.

The Committee appreciates the complete cooperation of the Three District Superintendents, and the faithful labours of the many pastors who have realized that "as the Sunday schools grow, so grows the Church."

MORELAND YUNDT,
Promotional Secretary
LINDLEY ARNETT
MILFORD BURCHAM

REPORT OF INDIANA CONFERENCE YOUNG PEOPLE'S TREASURER

(For year ending June 30, 1948)

Receipts:

Cash brought forward, July 31, 1947.....	\$ 612.76
Offerings from Churches	182.19
Offerings on Mixer	174.29
Offerings from District Rallies	162.86
Offerings from State Convention	377.29
Registration	179.85
Lunch Stand	70.22
Special offering for Wire Recorder for Ermal Wilson	123.68
Total Receipts	\$1,883.14

Expenditures:

Printing, stationery, and postage	\$ 136.30
Mixer	213.15
Wire Recorder for Ermal Wilson	123.68
Travel	137.92
District Rally Workers	116.80
Convention Supplies	279.71
Convention Evangelist	100.00
Convention Chorister	25.00
Mower	50.00
Lights	40.00
Cooks	65.00
Bank Charges	1.58
Total Expenditures	\$1,289.14
Cash on Hand, July 1, 1948	\$ 594.00

Signed:

CLARENCE KLOPFENSTEIN
Indiana Conference Y. P. Treasurer

MINISTERIAL DIRECTORY

Ordained

Abel, Dorothy	Philippine Island
Adams, W. S.	Seelyville, Ind.
Addington, Robert	
Andrews, Flo	Osgood, Ind.
Arnett, Beulah	437 Indiana St., Wabash, Ind.
Arnett, Lindley	437 Indiana St., Wabash, Ind.
Baldwin, Vern	R. R. 1, Linn, Ind.
Bates, Fred	
Bateman, G. R.	2403 Jackson St., Anderson, Ind.
Barber, Dennis H.	113 Vine St., Gas City, Ind.
Barnes, George C.	7024 W. 73rd St., Chicago 38, Ill.
Barnes, Edna	1323 S. 19th St., New Castle, Ind.
Barnes, O. W.	1323 S. 19th St., New Castle, Ind.
Baughman, Retta	2719 Lincoln St., Anderson, Ind.
Bennett, Bessie	
Billman, J. Edgar	R. R. 2, Winchester, Ind.
Bond, Brose	Hartsville, Ind.
Bowman, Ruth	Frankfort Pilgrim College, Frankfort, Ind.
Bowman, Lula	Thorntown, Ind.
Bowden, Delmont	
Bradley, Elsie	2332 Lake Shore Dr., Sheboygen, Wis.

Bradfield, Bonnie	Petersburg, Ind.
Brown, C. C.	135 Oakland Ave., Mishawaka, Ind.
Brown, Myrtle	135 Oakland Ave., Mishawaka, Ind.
Brown, Frank	Frankfort, Ind.
Brown, Lena	R. R. 2, Lebanon, Ind.
Brown, R. W.	2002 Winstel Road, Tuscon, Ariz.
Bryan, Joseph C.	Indianapolis, Ind.
Burcham, J. M.	1805 Vincennes Ave., Washington, Ind.
Burke, Stephen Cole	R. R. 4, Greencastle, Ind.
Call, Elton V.	Box 233, Shelburn, Ind.
Calvin, Omer	R. R. 3, Argos, Ind.
Camp, Virgil	379 N. E. Sixth St., Linton, Ind.
Carlson, Florence	5609 Thompsons Ave., Cincinnati 27, Ohio
Carroll, Ernest	1115 E. Indiana St., South Bend 14, Ind.
Carter, Hascue	R. F. D., Plainville, Ind.
Clark, Owen	1159 S. Columbia St., Frankfort, Ind.
Clark, Leota	Colfax, Ind.
Clark, Elmer	Colfax, Ind.
Clem, E. J.	619 West Morgan St., Kokomo, Ind.
Clymer, Pearl	406 S. "A" St., Elwood, Ind.
Cole, Lonnie	430 N. Union St., Winchester, Ind.
Cole, Maurice G.	632 W. Main St., Greensburg, Ind.
Coleman, Myrtle	Coalmont, Ind.
Cooley, Ethel	R. R. 3, Greenfield, Ind.
Cooley, Lawrence	R. R. 3, Greenfield, Ind.
Corts, C. H.	522 N. Sixth St., Terre Haute, Ind.
Cormican, Milo E.	Argos, Ind.
Cotton, J. F.	Green's Fork, Ind.
Critchfield, Stella	R. R. 1, West Baden Springs, Ind.
Cox, Carmen	Winchester, Ind.
Crowder, E. E.	R. R. 1, Green's Fork, Ind.
Crowder, Lorene	411½ Broadway, Greenfield, Ind.
Day, Beulah	435 W. High St., Montpelier, Ind.
Daugherty, Walter	507 Hinman St., Columbus, Ind.
Deal, Broadus H.	1135 N. Keystone St., Indianapolis, Ind.
Dean, Pearl	R. R. 2, Shelburn, Ind.
Dean, W. S.	R. R. 2, Shelburn, Ind.
Donovan, Jack	1259 S. First St., Frankfort, Ind.
Dooley, Gladys	954 E. Minnesota St., Indianapolis 3, Ind.
Dunkelberger, Hattie	2606 Washington Ave., Terre Haute, Ind.
Dunn, F. B.	355 South Third St., Frankfort, Ind.
Dunn, Wm. T.	R. R. 8, Rushville, Ind.
Eacret, J. O.	2114 Olive St., Indianapolis 3, Ind.
Elliott, Paul F.	230 E. Ohio St., Indianapolis 4, Ind.
Evans, Ronald E.	Indianapolis, Ind.
Ewing, A. M.	408 W. Armstrong St., Frankfort, Ind.
Faidley, E. I.	217 E. Third St., Madison, Ind.
Faidley, Verna	217 E. Third St., Madison, Ind.
Felsburg, Oscar	707 Ohio St., Walkerton, Ind.
Fletcher, Leonard	Fulton, Ind.
Flexon, R. G.	3851 Ruckle St., Indianapolis, Ind.
Franklin, Ida	2614 S. 8th St., Sheboygan, Wis.
Frye, Eva Grace	417 Indiana Ave., French Lick, Ind.
Frye, W. A.	417 Indiana Ave., French Lick, Ind.
Fugett, W. B.	205 N. 29th St., New Castle, Ind.
Fuller, Earl	301 Murlin St., Bicknell, Ind.
Gick, Carrie S.	230 E. Ohio St., Indianapolis 4, Ind.
Goins, Floyd J.	504 W. Walnut St., Frankfort, Ind.
Goins, Howard	903 S. Locke, Kokomo, Ind.
Goins, Lee	2020 South "B" St., Elwood, Ind.
Good, Mary	South Fifth St., Frankfort, Ind.
Gookins, Floyd	Forest, Ind.
Groshart, G. W.	Old People's Home, Frankfort, Ind.

Grossman, E. W. R. R. 1, Howell, Ind.
 Guyer, P. D. 661 Caterlin St., Frankfort, Ind.
 Halt, E. V. 226 East Ohio St., Indianapolis 4, Ind.
 Hammer, Helen
 Hamilton, Clarence 104 S. 23rd St., Elwood, Ind.
 Hamilton, Grace 104 S. 23rd St., Elwood, Ind.
 Hankins, Mrs. Margaret 26 N. Grant St., Indianapolis 1, Ind.
 Hardin, Robert P. R. R. 4, Madison, Ind.
 Hart, Alice 1621 S. Ninth St., Terre Haute, Ind.
 Hartley, Wilbur R. R. 1, Monticello, Ind.
 Hastings, Augusta F. R. R. 1, Cambridge City, Ind.
 Hayhurst, Aaron 215 Greenwood St., Terre Haute, Ind.
 Hayhurst, Jesse 2518 Jefferson St., Terre Haute, Ind.
 Helvie, William R. R. 4, Anderson, Ind.
 Henry, Lester 651 E. Boone St., Frankfort, Ind.
 Hertel, James English, Ind.
 Hertel, Velma H. 100½ N. 4th St., Terre Haute, Ind.
 Hines, Anna 427 W. 22nd St., Anderson, Ind.
 Hinds, Frank Elwood, Ind.
 Higgenbotham, John 751 S. Third St., Frankfort, Ind.
 Hodson, Ada Scott R. R. 1, Greensburg, Ind.
 Holcomb, Albert Westport, Ind.
 Holden, H. L. 614 National Ave., Brazil, Ind.
 Hotle, Della 1922 Winton St., Indianapolis, Ind.
 Howell, E. O. 1050 S. 5th St., Frankfort, Ind.
 Howell, Rachel 1050 S. 5th St., Frankfort, Ind.
 Huff, George 2004 Hulman St., Terre Haute, Ind.
 Hughes, Hershel 1533 Jefferson St., Indianapolis, Ind.
 Hunt, Margaret R. R. 5, Frankfort, Ind.
 Inman, Katherine 2606 Washington Ave., Terre Haute, Ind.
 Isaacs, W. H. Hope, Ind.
 Isgrigg, Paul 830 Jackson St., Huntington, Ind.
 Isgrigg, Leah 830 Jackson St., Huntington, Ind.
 Jackson, Clarence 6902 Evanston St., Indianapolis, Ind.
 Jacobs, Pearly Morgantown, Ind.
 James, M. D. Medora, Ind.
 Jeffers, Angus 1112 S. Hackley St., Muncie, Ind.
 Jeffers, Lela 1112 S. Hackley St., Muncie, Ind.
 Jester, Clarence D. 1422 Cruft St., Indianapolis, Ind.
 Jewell, Garnet R. R. 2, Columbus, Ind.
 Jewell, Marvin 356 S. Locke St., Nappanee, Ind.
 Johnson, Fred
 Johnson, Stanley 509 E. Walnut St., Boonville, Ind.
 Johnson, Walter Hope, Ind.
 Jones, C. M. Box 431, Frankton, Ind.
 Jones, E. C. 634 W. Ninth St., Rushville, Ind.
 Jump, Allen 314 F. Fourth St., Madison, Ind.
 Kearby, Lee R. R. 3, Paoli, Ind.
 Keeney, Walter 1534 N. Fulton Ave., Evansville 10, Ind.
 Keith, Clarence N. Church St., Austin, Ind.
 Keith, Roberta N. Church St., Austin, Ind.
 Kelly, Virgil 507 N. Gospel St., Paoli, Ind.
 Kennedy, Eula 15 Tate St., Lawrenceburg, Ind.
 Kennedy, John 15 Tate St., Lawrenceburg, Ind.
 Kerby, James E. 141 Lincoln St., Aurora, Ind.
 Ketchum, W. E. 929 W. Sheridan St., Greensburg, Ind.
 King, Freedia Box 41, Morgantown, Ind.
 King, Irvin Box 41, Morgantown, Ind.
 Klopfenstein, Clarence Tyner, Ind.
 Klopfenstein, Ruth 1239 Elm St., Huntington, Ind.
 Locke, Fay Box 76, Michigantown, Ind.
 Locke, Katie Wayne Co., Box 80, Milton, Ind.
 May, Clarence 1841 Grand Ave., Connersville, Ind.

Mason, Crittendon	215 N. Noble St., Lebanon, Ind.
Martin, Ray B.	106 West Seymour St., Lagrange, Ind.
Marshall, Grace	Austin, Ind.
Mayhew, Lester	R. R. 1, Westport, Ind.
McCrary, Grace	R. R. 1, Walkerton, Ind.
McCrary, Ralph	5 E. Meredith St., Frankfort, Ind.
McCrary, Wilbert	Seelyville, Ind.
McFarlin, Imogene	General Delivery, West Terre Haute, Ind.
McFarlin, William	General Delivery, West Terre Haute, Ind.
McHenry, Charles	138 S. Fourth Ave., Beech Grove, Ind.
McQueen, Arthur	
Mendenhall, Alta	Jonesboro, Ind.
Mickschl, J. R.	College Corner, Ohio
Middleton, G. C.	R. R. 5, Frankfort, Ind.
Mitchell, L. R.	Upland, Ind.
Miers, Edith	411½ Broadway, Greenfield, Ind.
Montoya, Mabel Jeffries	Bernillio, New Mexico
Montgomery, Area	706 S. Fifth St., Frankfort, Ind.
Montgomery, Darrel W.	R. R. 8, North Bend Dr., Fort Wayne, Ind.
Montgomery, Loyd	1112 S. Hacklet St., Muncie, Ind.
Montgomery, Orla	4548 W. River Rd., Comstock Park, Mich.
Moore, Lillie	R. R. 2, Box 149, Wabash, Ind.
Moore, Wilbur	English, Ind.
Morrison, Clarence	Swayzee, Ind.
Mowery, Guy	111 W. 8th St., Jonesboro, Ind.
Neal, George	Shoals, Ind.
Neal, Ruth	Shoals, Ind.
Newton, Elsie	R. R. 1, Fairmount, Ind.
Nibarger, Ralph	3558 Graceland Ave., Indianapolis, Ind.
Nichols, Louise	2030 11th St., Huntington, West Va.
Noel, Gilbert	1005 West 10th St., Marion, Ind.
Parks, Jesse	1616 Norman Ave., Indianapolis, Ind.
Parr, Ruby	757 S. Third St., Frankfort, Ind.
Pratt, Wm. H.	3618 E. 30th St., Indianapolis, Ind.
Peisker, Armor D.	226 E. Ohio St., Indianapolis, Ind.
Pendry, C. E.	768 N. W. 49th St., Miami, Florida
Perry, R. D.	S. Fifth St., Frankfort, Ind.
Phares, George V.	734 Fair Ave., Shelbyville, Ind.
Plunkett, Arthur	37 Wisconsin St., Indianapolis, Ind.
Plunkett, Sarah	37 Wisconsin St., Indianapolis, Ind.
Poe, Edgar A.	1138 N. 18th St., Lafayette, Ind.
Posey, C. E.	5136 Rosslyn Ave., Indianapolis 5, Ind.
Pottenger, J. W.	Box 91, Prairie Creek, Ind.
Pownell, Donald	Pilgrim Bible College, Kernersville, N. C.
Preusz, T. J.	1725 E. 46th St., Indianapolis, Ind.
Pursley, James	2616 Central Ave., Anderson, Ind.
Ragsdale, Frances	(On Furlough) West Indies
Ragsdale, Paul	(On Furlough) West Indies
Reed, Carl R.	1025 Pleasant Hill St., Logansport, Ind.
Reprogle, Stewart	Magnolia Springs, Ala.
Rice, J. A.	565 Wilson Ave., Muncie, Ind.
Rice, Will	1833 Centennial Ave., Indianapolis 22, Ind.
Roark, Carl	Elnora, Ind.
Rogers, Robert	R. R. 6, Rushville, Ind.
Royer, Daniel	657 Delphi Ave., Frankfort, Ind.
Runnels, Perry	New Carlisle, Ind.
Sager, Carl	
Sailer, D. L.	West 7th St., Rushville, Ind.
Sarles, Velma	805 E. Oak St., New Albany, Ind.
Schenck, Dorsey	2239 Parker Ave., Indianapolis 1, Ind.
Schoeff, Bertha	Box 3, Clarksburg, Ind.
Schwing, Adam	R. R. 1, Lawrenceburg, Ind.
Sewell, Lydia Harrington	Spades, Ind.

Shelhamer, Everett R. R. 1, Churubusco, Ind.
 Shelton, Mattie R. R., Oaktown, Ind.
 Shepherd, Harry 851 S. Third St., Frankfort, Ind.
 Shroyer, William G. 1105 Harris St., Huntington, Ind.
 Schumaker, Naomi 2439 N. 14½ St., Terre Haute, Ind.
 Sibalal I. H. 2304 Langley Ave., Indianapolis, Ind.
 Sloan, Andrew Elnora, Ind.
 Skinner, Arthur V. Michigantown, Ind.
 Slusser, Charles 1108 7th Ave., Terre Haute, Ind.
 Smith, Albert J.
 Smith, Edith 404 Kerton St., Scottsburg, Ind.
 Smith, Lester 404 Kerton St., Scottsburg, Ind.
 Smith, Herman Box 595, Wheatland, Ind.
 Smith, Plen 1232 S. Harding St., Terre Haute, Ind.
 Smith, Ray P. O. Box 701, Westport, Ind.
 Snider, I. J. R. R. 6, Springfield, O.
 Speer, Grant R. R. 3, Mitchell, Ind.
 Snyder, Melvin 105 S. 17th St., Terre Haute, Ind.
 Speck, Walter 1119 S. Bell St., Kokomo, Ind.
 Storey, Mark 2727 Claremont Ave., Evansville, Ind.
 Storey, R. K. Frankfort Pilgrim College, Frankfort, Ind.
 Street, R. H. Abigal & White River Ave., Petersburg, Ind.
 Taylor, C. G. New London, Ind.
 Tedrow, Blanche Chomo, N. Rhodesia, Africa
 Thomas, Joseph T. 717 Elm St., Indianapolis, Ind.
 Thornburg, George F. 310 G. St., LaPorte, Ind.
 Trotzky, Edith R. R. 1, West Terre Haute, Ind.
 Tousley, Don E. 402 E. Third St., Seymour, Ind.
 Vampner, Blanche 1645 W. 14th St., Muncie, Ind.
 Vampner, DeFoe 1645 W. 14th St., Muncie, Ind.
 Vaught, Henry Boggstown, Indiana
 Voshell, W. P. Aurora, Ind.
 Waddell, L. L. 450 Douglas St., Box 184, Tipton, Ind.
 Wade, Lawrence 230 E. Ohio St., Indianapolis, Ind.
 Wade, V. E. R. R. 3, Knox, Ind.
 Wagoner, Roscoe Shoals, Ind.
 Waldron, Alice L. 201 Baker St., Mitchell, Ind.
 Waldron, Edward 201 Baker St., Mitchell, Ind.
 Walker, Pearl R. R. 1, College Corner, Ohio
 Webb, Samuel D. 414 Tyler St., LaPorte, Ind.
 Weekly, E. R. 2125 Newton St., Columbus, Ind.
 Wells, Walter L. 1929 Ohio Ave., Connersville, Ind.
 White, Dudley Spencer, Ind.
 White, Esther Wayne Co., Box 80, Milton, Ind.
 White, Robert R. R. 2, Westport, Ind.
 Williams, John W. 417 E. Main St., Greenfield, Ind.
 Williams, O. D. 312 N. Wilson St., Delphi, Ind.
 Williams, Ray L. R. R. 7, Columbus, Ind.
 Williams, Dorothy R. R. 7, Columbus, Ind.
 Wilson, C. I. 627 Olive St., Sullivan, Ind.
 Wilson, Ermal Africa
 Wilson, Madge Africa
 Wolfe, R. W. 5134 Rosslyn Ave., Indianapolis, Ind.
 Wood, Emery 501 Gum St., North Vernon, Ind.
 Wooten, Russel West Indies
 Wright, Cleona Box 52, Deputy, Ind.
 Wright, E. W. Box 122, Oaktown, Ind.
 Young, Marvin J. 859 W. Armstrong St., Frankfort, Ind.
 Yundt, Moreland 539 Bell St., Indianapolis, Ind.

LICENSED MINISTERS

First Year

Adams, Jack C.	834 Park St., Indianapolis, Ind.
Beasley, Eugene	1029 E. Virginia St., Evansville, Ind.
Best, Walter	R. R. 1, Centerville, Ind.
Bodine, William C.	2524 Manford St., Fort Wayne, Ind.
Boothe, Murry	335 S. 4th St., West Terre Haute, Ind.
Bowen, Pleasant	1861 N. 24th St., Terre Haute, Ind.
Brown, Cecil	R. R. 3, Milton, Ky.
Burress, Ray	Washington, Ind.
Butler, Oye	R. R. 5, Sullivan, Ind.
Butts, Lawrence	Frankfort, Ind.
Carroll, Charles E.	518 E. 3rd St., Gas City, Ind.
Colter, James F.	412 Jefferson St., Fairmont, Ind.
Connor, Ralph	1551 Comer St., Indianapolis 3, Ind.
Coston, Russell	Wolf River, Tenn.
Eckart, Estel Owen	355 S. Third St., Frankfort, Ind.
Eldridge, Robert	New Castle, Ind.
Fair, Paul	Frankfort Pilgrim College, Frankfort, Ind.
Fletcher, Delbert	1050 S. Fifth St., Frankfort, Ind.
Gardner, Lee	Elwood, Ind.
Greves, Kenneth	701 W. Jackson St., Brazil, Ind.
Hamilton, Ralph	R. R. 2, Windfall, Ind.
Hamm, H. T.	R. R. 1, Box 518, Marengo, Ind.
Hines, LeRoy	Box 96, Chesterfield, Ind.
Huff, Harold	406 Haugh, Indianapolis, Ind.
Hunter, Nannie	12 Tate St., Lawrenceburg, Ind.
Keith, John P.	Austin, Ind.
Leavell, Gerald	Swayzee, Ind.
McCallie, Roy	R. R. 1, Canaan, Ind.
Mahoney, Lucien	R. R. 2, Milton, Ky.
Malone, Robert N.	R. R. 2, Vevay, Ind.
Manship, Emmitt	R. R. 1, Hardinsburg, Ind.
Metcalf, Leroy	654 E. Grant St., Marion, Ind.
Moreillon, Clyde O.	R. R., Paris, Ill.
Porter, Eva	505 Lockport Road, Terre Haute, Ind.
Porter, Homer	South 10th St., West Terre Haute, Ind.
Porter, Thomas	505 Lockport Road, Terre Haute, Ind.
Ragsdale, Wilkes	5E George St., Washington, Ind.
Reed, Frank	106 E. Poplar St., Fort Branch, Ind.
Smith, Carl	832 Park Ave., Indianapolis, Ind.
Stewart, Earl	R. R. 1, Glezen, Ind.
Strunkle, Robert	Box 71, Orleans, Ind.
Taylor, Noel D.	7321 Ideal Ave., Fort Wayne, Ind.
Waddell, Mark E.	Box 184, Tipton, Ind.
Watkins, Duane	Frankfort Pilgrim College, Frankfort, Ind.
Willis, Orace Wayne	Frankfort Pilgrim College, Frankfort, Ind.
Winters, Delbert T.	Frankfort Pilgrim College, Frankfort, Ind.

Second Year

Bunting, D. W.	Wheatland, Ind.
Bunting, Helen	Wheatland, Ind.
Burcham, Juanita	1802 Vincennes Ave., Washington, Ind.
Carter, Paul D.	1050 S. 5th St., Frankfort, Ind.
Clark, Olive	R. R. 1, West Terre Haute, Ind.
Cromer, Darwin	1336 N. Third St., Logansport, Ind.
Dearinger, Eva	R. R. 2, Versailles, Ind.
Earlywine, Lillian	R. R. 1, Trafalgar, Ind.
Emery, O. D.	816 E. 30th St., Marion, Ind.
Lehue, Lincoln	Windfall, Ind.
McGinnis, W. E.	1004 S. Meridian St., Lebanon, Ind.
McLemore, Robert	c/o Frankfort Pilgrim College, Frankfort, Ind.

Martin, Robert	R. R. 1, Decker, Ind.
Mason, Harold	464 Concord St., Indianapolis, Ind.
Miller, Oscar, Jr.	Box 1293, New Carlisle, Ind.
Mowery, Vernal N.	222 E. Pennsylvania St., Shelbyville, Ind.
Murphy, Boone M.	c/o Frankfort Pilgrim College, Frankfort, Ind.
Pegg, Gilbert C.	Andrews, Ind.
Ribkee, Mable	R. R. 3, Noblesville, Ind.
Ribkee, Wm.	R. R. 3, Noblesville, Ind.
Rohner, Donald	811 N. 3rd Ave., Evansville, Ind.
Russel, Wilber	832 Manhattan Ave., Indianapolis, Ind.
Scantland, L. L.	112 W. Monroe St., Alexandria, Ind.
Smith, Lewis G.	1050 S. Fifth St., Frankfort, Ind.
Umfleet, Harold	c/o Frankfort Pilgrim College, Frankfort, Ind.
Walker, Elza	R. R. 1, College Corner, Ohio
Warren, Glenn	R. R. 2, Knightstown, Ind.
Winters, Delbert	R. R. 2, Jeffersonville, Ind.
Young, Lorenzo	704 S. 6th St., Frankfort, Ind.
Young, Virginia	704 S. 6th St., Frankfort, Ind.

Third Year

Andrews, Beulah L.	
Andrews, Clayburn M.	
Bowker, C. E.	Versailles, Ind.
Carpenter, Thomas	809 N. E. 10th St., Linton, Ind.
Davis, Harold A.	3102 N. Drexel Ave., Indianapolis, Ind.
Harbert, Violet L.	R. R. 3, Box 602, Greensboro, N. C.
Kable, Jennie M.	P. O. Box 51, Oaktown, Ind.
Kline, Cecil	1213 Elm St., Rochester, Ind.
Knight, Paul	42 E. Main St., Greenwood, Ind.
Leab, Luna	c/o Herman Verano, 65 N. Lafayette St., Peru, Ind.
Malone, Robert P.	R. R. 2, Vevay, Ind.
Manuel, Thomas	Forest, Ind.
Spencer, O. W.	R. R. 1, Petersburg, Ind.
Steger, Irene	1855 N. Harding St., Indianapolis, Ind.
Wilson, Roy	R. R. 4, Loogootee, Ind.
Yaryan, Mamie	1760 E. 66th St., Indianapolis, Ind.

Fourth Year

Bradfield, Landis	R. R. 1, Petersburg, Ind.
Butts, George A.	Frankfort, Ind.
Cheesman, Willis	Frankfort Pilgrim College, Frankfort, Ind.
Clock, Willis	2154 8th Ave., Terre Haute, Ind.
Gibbs, Fredrick	758 S. 6th St., Frankfort, Ind.
Hunter, Oscar	R. R. 3, Greenwood, Ind.
Lashbrook, Lee	Merom, Ind.
Locher, Roy	901 S. 3rd St., Frankfort, Ind.
McCullough, Jack V.	P. O. Box 715, Westport, Ind.
Meckes, Theodore	Frankfort Pilgrim College, Frankfort, Ind.
Mosier, John P.	1104 North "I" St., Richmond, Ind.
Nicoson, Verval	Coalmont, Ind.
Sheckells, Nettie	Alton, Ind.
Slater, William	R. R. 2, Knightstown, Ind.
Stewart, John J.	Frankfort Pilgrim College, Frankfort, Ind.
Stroud, Wayne	Somerville, Ind.

ORDAINED DEACONESS

Titus, Clyde	207 East First St., Evansville, Ind.
--------------------	--------------------------------------

LICENSED DEACONESSSES

Butts, Susie	1050 South Fifth St., Frankfort, Ind.
Tincher, Nora	1240 Naghel St., New Albany, Ind.

MISSIONARIES

Abel, Dorothy	Philippine Islands
Ragsdale, Paul W. (on furlough)	West Indies
Ragsdale, Frances (on furlough)	West Indies
Reynolds, Cora	c/o God's Bible School, Cincinnati, Ohio
Solter, Edith	West Indies
Tedrow, Blanche	Africa
Wilson, Ermal	Africa
Wilson, Madge	Africa
Wooten, Russel	West Indies

COMING FROM OTHER CHURCHES OR DISTRICTS

Brown, C. C.	Gulf States District
Brown, Myrtle	Gulf States District
Bodine, William C.	Missionary Church
Harbert Violet L.	Alabama District
Marshall, Grace	Methodist
Manship, Emmitt	Missionary Workers
McCallie, Roy	Free Methodist
Pendry, C. E.	Gulf States District
Phipps, K. W.	Michigan District

CONFERENCE EVANGELISTS

Barber, Dennis H.	113 Vine St., Gas City, Ind.
Billman, J. E.	R. R. 2, Winchester, Ind.
Clymer, Pearl	406 South A St., Elwood, Ind.
Clem, E. J.	619 W. Morgan St., Kokomo, Ind.
Dean, Wm. S.	R. R. 2, Shelburn, Ind.
Donovan, Jack	1259 South First St., Frankfort, Ind.
Ewing, Albert M.	408 W. Armstrong St., Frankfort, Ind.
Goins, Howard	903 South Locke St., Kokomo, Ind.
Goins, Lee	2020 S. B St., Elwood, Ind.
Hayhurst, Jesse	2518 Jefferson St., Terre Haute, Ind.
Hertel, Velma	100½ N. Fourth St., Terre Haute, Ind.
Kearby, Lee	R. R. 3, Paoli, Ind.
Locke, Katie and Esther White	Box 80, Milton, Ind.
Montgomery, Area	706 S. Fifth St., Frankfort, Ind.
Montgomery, Loyd	1112 S. Hockley St., Marion, Ind.
Montgomery, Orla	4548 W. River Road, Comstock Park, Mich.
McFarlin, Wm. and wife	General Delivery, West Terre Haute, Ind.
Nickols, Louise	2030 11th Ave., Huntington, W. Va.
Posey, C. E.	5136 Rosslyn Ave., Indianapolis, Ind.
Pursley, James	2616 Central Ave., Anderson, Ind.
Rice, Will	1833 Centennial Ave., Indianapolis, Ind.
Ragsdale, Wilkes	5 E. George St., Washington, Ind.
Schenck, Dorsey	2239 Parker Ave., Indianapolis, Ind.
Slater, Wm.	Knightstown, Ind.
Vampner, Defoe and wife	1645 W. 14th St., Muncie, Ind.
Wade, Lawrence and wife	230 E. Ohio St., Indianapolis, Ind.
Williams, Ray L. and wife	R. R. 7, Columbus, Ind.
Wolfe, R. W.	5134 Rosslyn Ave., Indianapolis, Ind.
Yaryan, Mamie	1760 E. 66th St., Indianapolis, Ind.

SONG EVANGELISTS

Ashby, Kenneth and Geneva	R. R. 7, Greensburg 3, Ind.
Bate, May and Jessie	R. R. 7, Greensburg 3, Ind.
Beasley, Eugene	1029 E. Virginia St., Evansville, Ind.
Borders, Viola	Versailles, Ind.

Cleaver, Lois E.	R. R. 2, West Baden Springs, Ind.
Ficklin, Pansy	R. R. 1, Petersburg, Ind.
Grummons, Norine	665 Greenlawn Ave., Fort Wayne 7, Ind.
Hamilton, Max and Barbara	104 S. 23rd St., Elwood, Ind.
Hamilton, Mildred	104 S. 23rd St., Elwood, Ind.
Hamilton, Paul	104 S. 23rd St., Elwood, Ind.
Hamilton, Violet Mae	104 S. 23rd St., Elwood, Ind.
Heugel, Helen	R. R. 1, Box 680, Evansville, Ind.
Jester, Paul and Mary	R. R. 7, Greensburg 3, Ind.
Kelley, Helen	Box 254, Bicknell, Ind.
McCullough, Jack V. and Farene	P. O. Box 715, Westport, Ind.
McHenry, Fern	138 S. Fourth Ave., Beech Grove, Ind.
Mann, Orville and Estella	R. R. 5, Madison, Ind.
(Send mail c/o Rev. Cleona Wright, Deputy, Ind.)	
Miller, Barbara	Elnora, Ind.
Miller, Ruth Donn	Grantsburg, Ind.
Morris, Betty Lou	1501 Home Ave., Kokomo, Ind.
Parr, Gareldine	R. R., Fairbanks, Ind.
Pavey, Junior and Jaunita	English, Ind.
Poe, Elsie	1138 N. 18th St., Lafayette, Ind.
Powers, Irene	R. R. 4, Winchester, Ind.
Skinner, M. Jean	Box 123, Michigantown, Ind.
Strahley, Dora	Box 254, Bicknell, Ind.
Waddell, Mark E.	450 Douglas St., Tipton, Ind.
Watson, Gilbert and Meria	Box 206, Parker, Ind.
Watson, Pauline	R. R. 2, Shelburn, Ind.
Williams, Dorothy	R. R. 7, Columbus, Ind.

IN MEMORIAM

JAMES McCrORY

James McCrory was born May 30, 1881 and finished his labors on November, 1947. He was converted in 1921 at Anderson, Indiana and preached his first sermon at Elwood in a street meeting which was being conducted by Rev. George Huff. He united with the Pilgrim Holiness Church at Anderson while Rev. Wm. S. Dean was the pastor. His first conference ministers' license was granted in 1934 and he was ordained in 1938.

He served as pastor of the following churches: Clarks Hill, Rushville, Hartsville, Tyner, College Corner, Connersville, Concord and Noblesville. While at Connersville a parsonage was purchased and paid for and the church remodelled. Prior to his uniting with the Pilgrim Holiness Church he spent two years with an evangelistic party as song leader.

SAMUEL MOORE

Samuel Moore was born January 13, 1864. He was converted in 1888 at Urbana, Indiana. His first sermon was preached at Laketon in 1898. He united with the Pilgrim Holiness Church in 1905 and was sanctified in 1907. He was ordained to the ministry in 1919. He served as pastor of the Church at Andrews. He opened a mission in Huntington, Indiana which was after organized into a Pilgrim Holiness Church. He was superintendent of a mission at Lagro for several years and served the City Mission in Wabash for three years.

VERNON R. WEBB

Vernon R. Webb was born November 2, 1908. He was converted in 1931 at Bass Lake and preached his first sermon at Ora, Ind. He received his A. B. at Manchester College and spent three years teaching in Knox before coming to Frankfort Pilgrim College to teach in the high school department. He was just beginning his second year as teacher when death came in December, 1947. He was ordained as a minister in 1946.

DAVID STEWART

David Stewart united with the Pilgrim Holiness Church in 1936 and was ordained to the ministry in 1938. For years he had served with the Salvation Army and was active in relief work in Indianapolis after his union with the Pilgrim Holiness Church. Since only the closing years of his ministry were spent with the Pilgrim Holiness Church our records of his activities are meagre.

COUNCIL REPORT ON PLACEMENT OF PASTORS

Northern District

Alexandria—L. L. Scantland.....	112 W. Monroe St., Alexandria, Ind.
	Phone 446-R
Andrews—Gilbert Pegg	Andrews, Ind.
	Church Address, Corner Madison and Main Sts., Phone 70
Anderson First—G. R. Bateman.....	2403 Jackson St., Anderson, Ind.
	Church Address, 2400 Delaware St., Phone 9561
Bass Lake—Victor Wade	R. R. 3, Knox, Ind.
	Church Address, Bass Lake, Ind., Phone 5163
Chesterfield—LeRoy Hines	Box 96, Chesterfield, Ind.
Delphi—Dale Williams	312 N. Wilson St., Delphi, Ind.
	Church Address, North Union Street, Phone 426
Elwood—Clarence Hamilton	104 S. 23rd St., Elwood, Ind.
	Church Address, 23rd and Main Sts., Phone 403
Fairmount—James Coulter	412 E. Jefferson, Fairmount, Ind.
	Church Address, Corner Walnut and Madison Sts., Phone 71-L
Forest—Floyd Gookins	Forest, Ind.
Fort Wayne—Noel Taylor	7321 Ideal St., Waynedale, Ind.
Frankfort First—Ralph McCrory.....	5 Meredith St., Frankfort, Ind.
	Church Address, Corner Third and South Sts., Phone 1886
Frankfort Second—John Stewart.....	Frankfort Pilgrim College, Frankfort Ind.
Frankton—C. M. Jones.....	Box 431, Frankton, Ind.
	Phone 107F3
Fulton—Leonard Fletcher	Fulton, Ind.
	Phone 84
Gas City—C. E. Carroll	518 S. Third St., Gas City, Ind.
Green Township—Everett Shelhamer	R. R., Churubusco, Ind.
Howard Chapel—Ralph Hamilton	R. R., Windfall, Ind.
Huntington—Paul and Leah Isgrigg	830 Jackson St., Huntington, Ind.
Jonesboro—Guy Mowery	111 W. Eighth St., Jonesboro, Ind.
	Church Address, West Eighth St., Phone 6821
Kokomo First—Walter Speck	1119 S. Bell St., Kokomo, Ind.
	Church Address, 1128 S. Purdum St., Phone 3711
Kokomo North Side—Floyd Clark.....	823 N. Webster St., Kokomo, Ind.
	Church Address, North Armstrong St.
Lafayette—Edgar A. Poe	1138 N. 18th St., Lafayette, Ind.
	Church Address, 901 S. 19th St., Phone 7842
LaGrange—Ray B. Martin	106 W. Seymour St., LaGrange, Ind.
Lebanon—Wilbur McGinnis	1004 S. Meridian St., Lebanon, Ind.
	Church Address, Ash and Lebanon Sts., Phone 1116W
Leisure—Waldo Hosier	R. R. 4, Elwood, Ind.
Logansport—Carl R. Reed	1025 Pleasant Hill, Logansport, Ind.
	Church Address, Linden Ave. and Sixth Street, Phone 9372
Marion First—Gilbert Noel	1005 W. Tenth St., Marion, Ind.
	Church Address, 1001 W. Tenth St., Phone 2846
Marion Grant Street—Roy Metcalfe.....	654 E. Grant St., Marion, Ind.
	Church Address, 654 E. Grant St.
Marion South—O. D. Emery	816 E. 30th St., Marion, Ind.
	Church Address, 3730 S. Boots, Phone 7061-M
Michigantown—Faye Locke	Michigantown, Ind.

Muncie—Angus Jeffers1112 Hackley St., Muncie, Ind.
 Phone 8747
 Monon—Estel Eckart Frankfort Pilgrim College, Frankfort, Ind.
 New Carlisle—Oscar Miller New Carlisle, Ind.
 Noblesville—Mable Ribkee R. R. 4, Noblesville, Ind.
 Church Address, 13th and Wayne Sts., Phone 1494-R
 Norway—Wilbur Hartley R. R. 1, Monticello, Ind.
 Phone 602-J1
 Nappanee—Marvin Jewell356 S. Locke St., Nappanee, Ind.
 Phone 5183
 Sharon—Cecil Kline1213 Elm St., Rochester, Ind.
 Phone 201M
 South Bend—Ernest Carroll.....1115 E. Indiana Ave., South Bend 14, Ind.
 Church Address, 1111 E. Indiana Ave., Phone 43740
 Swayzee—Gerald LeavellSwayzee, Ind.
 Phone 35F3
 Tipton—L. L. Waddell 450 Douglas St., Tipton, Ind.
 Church Address, Mill and Douglas Sts., Parsonage Phone 1762
 Church Phone 762
 Tyner—Clarence Klopfenstein Tyner, Ind.
 Thornhope—E. K. Purcell.....Frankfort Pilgrim College, Frankfort, Ind.
 Wabash—Lindley and Beulah Arnett.....437 Indiana St., Wabash, Ind.
 Church Address, Washington and Indiana Sts., Phone 735-R
 Walkerton—Oscar Felsburg 707 Ohio St., Walkerton, Ind.
 Phone 234-M
 Winchester—Lonnie Cole430 Union Sts., Winchester, Ind.
 Church Address, Union and Short Sts., Phone Blue 536
 Windfall—Lincoln Lehue Box 174, Windfall, Ind.
 Phone 112

Central District

Aurora—James Kerby 141 Lincoln St., Aurora, Ind.
 Phone 304-J
 Beech Grove—C. W. McHenry.....138 S. Fourth Ave., Beech Grove, Ind.
 Church Address, 120 S. Fourth Ave.
 Bethel—E. R. Weekly2125 Newton St., Columbus, Ind.
 Phone 7472
 Brown's Chapel—Lawrence CooleyR. R. 3, Greenfield, Ind.
 Church Address, R. R. 3, Greenfield, Ind.
 Centerville—Walter BestR. R. 1, Centerville, Ind.
 Church Address, North Morton Ave., Phone 2538
 College Corner—J. R. MickschlCollege Corner, Ohio
 Concord—Robert Hardin R. R. 4, Madison, Ind.
 Church Address, Cross Plains, Ind.
 Connersville—Clarence May1841 Grand Ave., Connersville, Ind.
 Phone 1699-W
 Clarksburg—Bertha SchoeffBox 3, Clarksburg, Ind.
 Phone 231
 Deputy—Cleona Wright Deputy, Ind.
 East Columbus—Walter Daugherty.....507 Hinman St., Columbus, Ind.
 Church Address, New York and Hinman Sts., Phone 5891
 East Enterprise—Robert Malone.....R. R. 2, Vevay, Ind.
 Phone 50C—East Enterprise Exchange
 Edinburg—Wilbur Russell308 N. Grant St., Edinburg, Ind.
 Greensburg—M. G. Cole.....632 W. Main St., Greensburg, Ind.
 Church Address, West Central Ave., Phone 8702
 Greenfield—John Higgenbothom751 S. Third St., Frankfort, Ind.
 Greenwood—Paul Knight 42 E. Main St., Greenwood, Ind.
 Phone 275
 Hartsville—Brose Bond Hartsville, Ind.
 Hope—Wayne Isaac Hope, Ind.
 Church Address, Market Street, Phone 1893

Epsom—Hascue Carter.....R. R., Plainville, Ind.
 Evansville, First—Walter Keeney.....1534 Fulton Ave., Evansville, Ind.
 Church Address, 1500 Fulton Ave., Phone 3-1600
 Evansville, Forest Hills—Mark Storey.....2727 Claremont Ave., Evansville, Ind.
 Church Address, 2700 Claremont Ave., Phone 2-8725
 French Lick—W. A. Frye.....417 Indiana Ave., French Lick, Ind.
 Church Address, Indiana Ave., Phone 116
 Fort Branch—Frank Reed 196 E. Poplar St., Fort Branch, Ind.
 Harvey Flats—Nettie Sheckells Alton, Ind.
 Jasonville—Basil Hayes
 Linton—Virgil Camp379 N. E. 6th St., Linton, Ind.
 Church Address, Sixth and D Sts., Phone 656-M
 Loogootee—Roy Wilson R. R. 4, Loogootee, Ind.
 Contact by Phone 3903
 Marengo—Herschell Hamm Marengo, Ind.
 Mecca—Steven C. Burke R. R. 4, Greencastle, Ind.
 Medora—M. D. James Medora, Ind.
 Merom—Lee Lashbrook Merom, Ind.
 Mitchell—Edward and Alice Waldron.....201 Baker St., Mitchell, Ind.
 Church Address, Second and Frank Sts.
 New Albany—Velma Sarles805 E. Oak St., New Albany, Ind.
 Phone 5-7530
 New Goshen—Murry Boothe 335 S. Fourth St., West Terre Haute, Ind.
 Oaktown—E. W. WrightBox 122, Oaktown, Ind.
 Phone 75
 Orleans—Robert Stunkel Box 71, Orleans, Ind.
 Paoli—Virgil Kelley507 N. Gospel St., Paoli, Ind.
 Church Address, North Gospel St., Phone 2901
 Petersburg—Raymond Street Petersburg, Ind.
 Phone 341-X
 Poplar Grove—Ray Burress 1100 W. Vantrees St., Washington, Ind.
 Prairie Creek—Wilbur Pottenger Box 91, Prairie Creek, Ind.
 Sandford—Clyde Moreillon..... R. R., Paris, Ill.
 Scott City—Pearl Dean R. R. 2, Shelburn, Ind.
 Scottsburg—Lester Smith 404 Kerton St., Scottsburg, Ind.
 Phone 4202
 Seeleyville—Wilbert McCrory Seeleyville, Ind.
 Shelburn—Elton CallBox 233, Shelburn, Ind.
 Phone 34H
 18—PILGRIM
 Shoals—George Neal Shoals, Ind.
 Somerville—Wayne Stroud Somerville, Ind.
 Sullivan—C. I. Wilson627 Olive St., Sullivan, Ind.
 Phone 312
 Terre Haute, Greenwood St., Aaron Hayhurst.....215 Greenwood St.,
 Terre Haute, Ind., Church Address, Greenwood and Thompson Sts.
 Terre Haute, Hulman St.—George Huff.....2004 Hulman St., Terre Haute, Ind.
 Church Address, 20th and Hulman Sts., Phone Crawford 4700
 Terre Haute, Sixth Ave.—Willis Clock.....2154 8th Ave., Terre Haute, Ind.
 Terre Haute, Northside—Naomi Shumaker.....2439 N. 14½ St., Terre Haute
 Phone Harrison 8088
 Terre Haute, West—R. S. Wheeldon.....37 N. 7th St., West Terre Haute, Ind.
 Twin Oaks—Oran SpencerR. R., Petersburg, Ind.
 Vincennes—Herman SmithBox 595, Wheatland, Ind.
 Washington—Milford Burcham.....1805 Vincennes Ave., Washington, Ind.
 Wheatland—D. W. Bunting.....Wheatland, Ind.

REPORT OF CONFERENCE STATISTICIAN

Pastor's Report

Number of Sermons Preached	10,837
Number of Prayer Services Conducted	4,682
Pastoral Calls to Members	17,535
Pastoral Calls to Non Members	16,491
Total Pastoral Calls	40,583
Revivals Conducted	234
Number Seeking Regeneration	4,774
Number Seeking Sanctification	2,228
Number Dealt With in Personal Work	3,226
Number Prayed with for Healing	2,691
Number Baptized	208
Number Communion Services	264
Number of Children Dedicated	148
Number of Marriages	189
Number of Funerals	367

Pastor's Support

Cash Support from Church	\$187,710.51
Estimated Donations	12,516.77
Gifts	11,596.26
Total Support	\$209,151.71

Local Church Financial Report

Receipts

Cash Brought Forward	\$ 60,520.33
Regular Offerings	352,475.05
Special Offerings	112,628.69
Total Receipts	\$551,092.12

Expenditures

Pastor's Support	\$186,401.15
Rents	5,920.82
Interest	1,585.21
Improvements	56,310.47
Indebtedness	19,084.25
Evangelists	42,456.85
District Indebtedness	2,923.94
O. P. H.	1,273.12
District Budget	27,598.51
District Home Missions	2,700.48
{ Foreign Missions	29,724.59
General { Home Missions	6,339.46
{ General Administration Expense	4,295.85
Bible Schools	6,898.81
Incidentals	76,054.90
Total Expenditures	\$481,841.87
Cash on Hand	67,057.79

Local Church Statistical Report

Members on Roll Last Report	4,848
Names Dropped from Roll	321
Transferred by Letter	134
Number of Deaths	65
Total Removals	515
Additions by Profession of Faith	430
Additions by Letter	121
Total Additions	513
Present Membership:	
Ordained Ministers	216
Licensed Ministers	99
Local Ministers	64
Deaconesses	13
Probationary	84

Members in Full Standing (Beside Ministerial)	3,582
Total Membership	4,955
Members of Voting Age Now on Roll	3,130
Number of Preaching Services	13,490
Open Air Services	156
Jail or Prison Services	249
Church Prayer Services	5,601
Cottage Meetings	1,787
Total Services	20,922
Number of Tithers	1,828
Number of Subscribers to Pilgrim Holiness Advocate	10,717

Sunday School Statistical Report

Number of Teachers and Officers	1,061
Net Enrollment	8,180
Total Enrollment	9,070
Average Weekly Attendance	8,280
Average Weekly Attendance—last report	6,854
Number on Cradle Roll	1,622
Net Gain	1,426
Number of Sessions	5,526
Number of Scholars Converted	411
Number Joined Church	103
Number of Books in Library	897

Sunday School Financial Report

Receipts	
Cash Brought Forward	\$ 7,876.88
Regular Offerings	36,718.78
Birthday Offerings	1,494.99
Special Offerings	11,650.43
Total Receipts	\$60,184.45
Expenditures	
Literature	\$12,143.42
Equipment	20,559.50
Total Expenditures	\$41,708.19
Cash on Hand	7,078.62

YOUNG PEOPLE'S SOCIETY REPORT

Statistical

Number of Meetings Held	1,646
Number of Members Last Report	849
Present Membership:	
Active	644
Associate	120
Honorary	306
Net Gain or Loss	
Average Attendance	1,011

Financial

Receipts	
Cash Brought Forward	\$ 1,145.33
Offerings Received	4,242.86
Total Receipts	\$ 5,345.50
Expenditures	
Total Expenditures	\$ 4,417.46
Cash on Hand	1,306.33

PROPERTY STATEMENT

	Value	Debt	Equity
Church	\$359,972.00	\$ 17,794.00	\$330,850.00
Parsonage	194,850.00	27,521.00	169,167.00
Total	\$595,022.00	\$ 40,313.00	\$538,025.00

(60 Churches gave no report on Property Statement.)

PASTOR'S REPORT
Numbers Refer to Treasurer's Report

	CHURCH	PASTOR	No. Sermons Preached	Prayer Services Conducted	Pastoral Calls to Members	Pastoral Calls to Non-Members	Total Calls	Revivals on Charge	No. Seeking Regeneration	No. Seeking Sanctification	Souls Dealt With In Personal Work	No. Prayed With For Healing	Baptisms	No. of Commu- nion Services	Children Dedicated	Marriages	Funerals	Cash	Donations	Parsonage Supplied Yes or No	Gifts	Total Support
1	Alexandria	L. L. Scantland	85	10	104	85	189		86	90		50		1		5	4	925.00				925.00
2	Anderson	G. R. Bateman	68	4	751	391	1142	2	47	31		31		2		10	7	3380.00	297.00			3677.00
3	Andrews	Gilbert Pegg	79	21	138	183	322	2	29	17		13		4	10	2	2	1300.00	175.65		136.28	1611.93
4	Aurora	Fred Johnson	74	38	130	140	270	4	21	20	90	14		4			4	2080.00			132.21	2212.21
5	Bass Lake	W. E. Wade	95	51			152	1	7							3	6	702.11	11.95		405.30	1119.36
6	Bedford	Grant Speer	70	46	45	25	70	3	73	41	30	10	9	3		1		780.00	60.00		96.50	876.50
7	Beech Grove	Elmer Kizzee	132	68			365	4						4		4	2	886.00	30.00			916.00
8	Bethel	E. R. Weekly	94	42	96	111	207	1	44	12	37	5		4	3		1	1190.83	87.00			1277.83
9	Bicknell	C. I. Wilson	117	97	145	5	150	4	68	35		32		1		3	1	2274.63	112.38		94.75	2481.76
10	Boonville	Stanley Johnson	104	52				2								3	3	901.90				
11	Brazil	K. H. Greves	83	45	185	87	272	3	82	29	17	23		1		2	10	1465.98	100.00			1565.98
12	Brown's Chapel	L. J. Cooley	98	50			1308	1	35	23			4	2	4	2	5	2459.69	332.00		246.50	3038.19
13	Burns City	Carrie Gick																				
14	Centerville	Walter Best	104	74	60	36	96		11	2	24	6		1			2	451.43	226.45			677.88
15	Chesterfield	Elton Call	114	52	90	40	130	2	10	6		15		4		1	2	1710.90	45.00			1786.90
16	Clark's Hill	Lincoln Lehue																				
17	Clarksburg	Bertha Schoeff	72	12	229	89	318	4	121	69	62	41		3	2		1	1560.00	84.05		101.65	1745.70
18	Coalmont	Myrtle Coleman	76	53			108	2	16	7		14						227.90				227.90
19	College Corner	John Mosier	83	45	183	145	328	2	19	15	28	27		4	4		2	1426.95	32.09		28.73	1487.77
20	Concord	C. M. Jones	91	43	211	92	303	3	42	9	114	53	10	3	6		2	1225.00	127.05		71.00	1423.05
21	Connorsville	Clarence May	66	45	93	70	163		60	26		20		1		2	1	1807.96	100.00		178.72	2086.86
22	Delphi	William McFarlin	102	63	77	617	694	4	81	40	139	58		3	5	2	4	1862.00	124.55		238.10	2224.65
23	Deputy	Cleona Wright	156	75	53	81	134	3	46	20	30	22	3	4			4	1164.00	123.00		51.00	1338.20
24	East Columbus	W. L. Daugherty	77	21			1025	3	135	58		34	24	4			3	2340.00	151.85		87.02	2578.87
25	East Enterprise	Harold Mason	69	62	125	80	205	2	18	14		6		4			2	1904.83	72.00		245.00	2221.83
26	Edinburgh	Delmont Bowden																				
27	Elnora	Carl Roark	116	15	237	113	350	2	14	17		15					1	1373.25	150.00		300.00	1823.25
28	Elwood	Clarence Hamilton	90	83	310	156	466	3	99	68	91	38	5	2	2	1	5	2650.00	85.60		59.00	2794.60

PASTOR'S REPORT
Numbers Refer to Treasurer's Report

	CHURCH	PASTOR	No. Sermons Preached	Prayer Services Conducted	Pastoral Calls to Members	Pastoral Calls to Non-Members	Total Calls	Revivals on Charge	No. Seeking Regeneration	No. Seeking Sanctification	Souls Dead With In Personal Work	No. Prayed With For Healing	Baptisms	No. of Commu- nion Services	Children Dedicated	Marriages	Funerals	Cash	Donations	Parsonage Supplied Yes or No	Gifts	Total Support
29	English	James Hertel	105	76	246	438	684	4	57	11		15	12	1		2	4	2804.37	80.13		227.08	3111.58
30	Epsom	W. W. Ragsdale	149	30			147	5	78	65		6		1	13		1	932.60	59.30		89.40	1081.30
31	Evansville, First	Walter Keeney	87	77	201	538	740	3	52	11		26	1			5	10	2600.00	86.76		59.50	2746.26
32	Evansville, F.Hill	Mark Storey	72	16	316	392	708	3	151	49	255			4	16	8	15	3120.00	239.00		92.00	3451.00
33	Fairmount	J. E. Kerby	81	25	111	255	366	2	10	7	30	11		1		2	1	845.78	112.95			958.73
34	Forest	Floyd Gookins	78	13	152	150	302				26	8		3	4			1456.00	137.39		235.66	1829.05
35	Frankfort, 1st	Ralph McCrory	104	85			1244	2	76	62		90		4		2	19	2760.00	150.00			2910.00
36	Frankfort, 2nd	R. D. Perry	88	41	9	3	12	1	3	2		5	22	1	2		1	400.00				400.00
37	Frankton	Robert Hardin	101	50	245	140	385	2	3	1	110	12		2		3	2	674.63	75.00			749.63
38	French Lick	W. A. Frye	73	32	528	508	1036	2	109	59	84	182		3		4	14	2080.00	36.52		93.00	2209.52
39	Fort Branch	Frank Reed																				
40	Ft. Wayne	Noel Taylor																				
41	Fulton	Leonard Fletcher	93	52	177	152	329	2	26	6	22			4				2236.33	89.50		62.00	2378.23
42	Gas City	C. E. Carroll	97		115	87	202		40	6		3		1	5	3	1	2470.00	100.00			2570.00
43	Greenfield	Wayne Isaacs	95	47	122	103	225	2	18	3		3					2	505.00	56.18		200.20	861.39
44	Greensburg	Maurice Cole	73	31	153	167	320	2	40	16	48	33		3			2	2080.00	138.18		98.00	2316.18
45	Greenwood	Paul Knight	100	2	58	46	104		12	9		8					4	1134.05	170.61			1304.66
46	Hartsville	Brose Bond	90	83	75	91	166	2	20	8	115	30		1			1	200.39	101.25			302.15
47	Harvey Flats	Nettie Sheckels																				
48	Hope	Vernal Mowery	103	28	150	115	265	2	69	85	18	15					7	1123.00	178.37	100.00	134.35	1535.72
49	Howard Chapel	Ralph Hamilton	77	50	40	125	665	2	15	12	70	32				1	2	234.20				234.20
50	Huntington	Paul Isgrigg	128	68	263	868	1131	4	52	20		49		2	2	2	3	1560.00	80.00		80.00	1720.00
51	Indpls., 1st	W. H. Pratt	92	42	300	304	604		50	25		40		4	2	1		3470.00				3470.00
52	Indpls., 2nd	C. D. Jester	102	48	219	111	330	2	38	6	42	37			1		4	2671.95				2671.95
53	Indpls., Riverside	E. V. Halt	77	37	20	28	48		4	5		8				1		555.00				555.00
54	Indpls., North	T. J. Preusz	76	42	267	96	363	3						1				2762.50	16.45		37.05	2816.00
55	Indpls., Bro'side	Herschel Hughes	111	36	267	251	518	3	23	26		19				5	1	2672.00	45.00		230.00	2947.00
56	Indpls., V. View	Clarence Jackson	109	31	63	85	148	3	15	7	34	6		3			2	1398.00	25.12		181.00	1604.12

PASTOR'S REPORT Numbers Refer to Treasurer's Report

	CHURCH	PASTOR	No. Sermons Preached	Prayer Services Conducted	Pastoral Calls to Members	Pastoral Calls to Non-Members	Total Calls	Revivals on Charge	No. Seeking Regeneration	No. Seeking Sanctification	Souls Dealt With In Personal Work	No. Prayed With For Healing	Baptisms	No. of Commu- nion Services	Children Dedicated	Marriages	Funerals	Cash	Donations	Parsonage Supplied Yes or No	Gifts	Total Support
57	Indpls., Pros. St.	Ernest Salter	44	36	67	28	95	3	57	20	20	20						860.00			41.00	901.00
58	Indpls., Central	J. T. Thomas	70	41	16	3	149	1	6	2	16	2		3	1	1		1320.00	12.00		33.00	1365.00
59	Indpls., Bates	Wilbur Russell	63	33		143	143		10			4	11					98.97				98.97
60	Indpls., McCarty	Broadus Deal	58	43	69	197	266	2	73	4	39	8		2		5		1300.00				1300.00
61	Indpls., Westside	Lester Mayhew	59	42	115	222	337	2	12	7	30	41		3	1	1	3	1870.00	45.80			1915.80
62	Jasonville																					
63	Jonesboro	Guy Mowery	74	47	280	269	549	2	37	6		5		3	3		6	2650.00	285.16		173.54	3108.70
64	Knightstown	William Slater	90	50	100	200	300					25		3				912.50				912.50
65	Kokomo, Purdum	Walter Speck	186	47			757	3				20		2		1	6	2465.00	137.75		78.00	2680.75
66	Kokomo, North	Floyd Clark																				
67	Lafayette	C. M. Andrews	80	46			260		45	7				3		1	2	1264.00	84.70		307.60	1656.30
68	LaGrange	Ray B. Martin	83	18	30	25	55		10	12	10	5	1	11		1		710.00				710.00
69	Lawrence	Harold Davis																				
70	Lawrenceburg	Eula Kennedy	75		241	274	515	3	81	37	28	23	5	3	3	6	18	2284.00	259.04		116.50	2659.54
71	Lebanon	Wilbur McGinnis	87	63	234	235	469	3	17	5	37	20		4	3	3	2	2330.00	27.30		90.00	2447.30
72	Leisure	Waldo Hosier																				
73	Linton	Virgil Camp	79	30	305	88	393	2	22	11		60	6	2	6	1	2	1626.67	96.44		370.75	2273.86
74	Logosotee	Roy E. Wilson	90	50	100	100	200	2	6	5	100	20		2			2	1300.00	137.50		448.71	2050.00
75	Logansport	Carl Reed	100	41	204	137	341		111	49	47	33		2	1	2	9	2860.00	53.65		125.00	3038.65
76	Madison	C. W. McHenry	120	50	325	60	385	2	45	28		28		3	6	5	12	1300.00	30.00			1330.00
77	Marengo	Herschel Hamm	108	2	46	10	56	2	10	6		4		1		1		370.48	81.50		38.00	489.98
78	Marion, 1st	Gilbert Noel	68	42	310	291	601	3	67	26		53		2		5	5	2765.00	23.77		93.64	2882.41
79	Marion, Grant	O. D. Williams	81	48			270	1	18	8	8	10		1		2	1	1479.56	25.00		10.00	1514.56
80	Mecca	Clyde Moreillon	78	45	40	42	82	1	8	2		2				3	1	193.57	77.80		10.00	281.37
81	Medora	Alice Waldron	74	38	110	18	128	2	11	2		45	8		1	1		863.53	83.00		195.00	1141.53
82	Merom	Lee Lashbrook	67	10	137	79	276	2	7	3		15		2		1	1	815.00	84.00			967.00
83	Michigantown	Faye Locke	82	39	125	125	250	2	43	6		19		3	2	2	5	1756.30	185.15		125.00	2066.45
84	Milton	W. B. Fugett	64	32	144	300	444	2	28	4								275.94	68.15			344.09

PASTOR'S REPORT
Numbers Refer to Treasurer's Report

	CHURCH	PASTOR	No. Sermons Preached	Prayer Services Conducted	Pastoral Calls to Members	Pastoral Calls to Non-Members	Total Calls	Revivals on Charge	No. Seeking Regeneration	No. Seeking Sanctification	Souls Dealt With In Personal Work	No. Prayed With For Healing	Baptisms	No. of Commu- nion Services	Children Dedicated	Marriages	Funerals	Cash	Donations	Parsonage Supplied Yes or No	Gifts	Total Support
85	Mitchel	Robert Malone	104	60	120	361	481	2	57	39	100	30	1	3		3	4	1370.00	119.27		349.63	1838.90
86	Monon	George Neal	113	46	73	62	135	3	12	8	15	2	1	3		1	3	1030.00	136.00			1102.75
87	Morgantown	Irvin King	94	39	159	115	274	2	41	24	47	41		4		1	3	1560.00	87.37		70.04	1658.01
88	Muncie	Angus Jeffers	177	53	595	75	670	2	57	15	55	244	3	4	2	7	3	3220.00	50.75		86.00	3356.75
89	New Albany	Velma Sarles	81	20	78	171	249	2	20	21		15		1				1295.00	14.50		30.00	1339.50
90	New Carlisle	Oscar Miller	109	50				3	20	11			5	4	2	1	6	1195.00	350.00			1545.00
91	New Castle	O. W. Barnes	44	96	336	386	722		180	65	150	21	3			6	6	2340.00	499.83			2839.83
92	New Goshen	Edith Trotzky	44	44		14	14	2	4	2	8	6		1	1		2	254.23	15.00		20.00	289.23
93	Noblesville	Mabel Ribkee	61	52			227	1	9	4	63	29		1		1	1	1003.24	40.25			1043.59
94	North Vernon	Moreland Yundt	83	36	85	93	188	1	101			3		1	2	2		1642.50	185.96		200.00	2028.46
95	Norway	Wilbur Hartley	89	10	49	15	64		8	2		3		2				400.00			23.00	423.00
96	Nappanee	Marvin Jewel	81				171		7			22		3		1	2	1185.00	192.93		322.69	1700.62
97	Oaktown	E. W. Wright	70	10	65	50	115	2	3		5	4		2	1	2	4	792.00	97.90		47.50	937.40
98	Orleans	Robert Stunkel	80	100	65	90	155	3	25	18	15	20	9	1		2	6	1290.14	63.14		259.80	1612.08
99	Paoli	Virgil Kelly	80	37	98	192	290	2	13	10		13		3	1	1		1307.17	103.87		128.77	1539.81
100	Petersburg	Raymond Street																				
101	Poplar Grove	Ray Burrese	50	2	50	25	75	3	24	9		13	3	4			1	460.25	76.00			536.25
102	Prairie Creek	J. W. Pottenger	80	40	169	64	233	1	2	1	2	1				1	1	1300.00	97.20		156.45	1553.65
103	Richmond, 1st	E. E. Crowder	56	9	262	162	424	2	90	34	81	23		2		2	2	2480.00	64.94		236.92	2781.86
104	Richmond, E. S.	Emory Wood	110	39	413	100	513	3	50	24	52	70			4		11	1040.00	240.00			1280.00
105	Rising Sun	J. R. Mickschl	86	13	65	125	190		12		41	11						453.95	25.00		239.00	717.95
106	Rodney																					
107	Rushville	E. C. Jones	91	8	124	59	183	2	14	15	9	15		4		1	4	1560.00	265.47		135.83	2119.30
108	Sanford	Murry Boothe	106		138	47	185	3	18	1		10		2		4	2	965.11	124.85		110.17	1200.13
109	Scott City	Pearl Dean	46	4	80	75	155	2	6	16		10		2			3	995.00	98.00			1093.00
110	Scottsburg	Lester & E. Smith	134	50	128	440	568	1	8	4			6	4				359.64	263.27		50.00	672.91
111	Seeleyville	Frank Brown	79	25	60	30	90	1	8	4	20	4		4		1		569.93	47.78			617.31
112	Seymour	Don Tousley	82	44	274	303	577	3	17	3	43	13		3		2	3	950.56	207.51		100.00	1258.07
113	Shelburn	E. R. Brunton																				

PASTOR'S REPORT
Numbers Refer to Treasurer's Report

CHURCH	PASTOR	No. Sermons Preached	Prayer Services Conducted	Pastoral Calls to Members	Pastoral Calls to Non-Members	Total Calls	Revivals on Charge	No. Seeking Regeneration	No. Seeking Sanctification	Souls Dealt With In Personal Work	No. Prayed With For Healing	Baptisms	No. of Commu- nion Services	Children Dedicated	Marriages	Funerals	Cash	Donations	Parsonage Supplied Yes or No	Gifts	Total Support
114 Shelbyville	Clarence Morrison	32	31	110	60	170	2	55	25	4	14		2	1			2575.00	72.00		184.00	2821.00
115 Shoals	George Phares	110	52	155	152	307	1	26	9	10	26		4		7		1560.00	107.16		95.75	1762.91
116 Somerville	Bonnie Bradfield	67		115	100	215	3	40	25		35		2		2	2	1137.00	70.00		60.00	1267.00
117 South Bend	Ernest Carroll	71	4	413	211	624	2	121	19		62	6	2	4	1	2	3065.00	285.25		281.70	3631.95
118 Spearsville	Dan Royer	90	3	40	50	90		2	4	49	10		1				605.99	10.00			615.99
119 Sullivan	Roy Metcalfe	66	33	39	79	118	1	14	7		15					3	727.95	217.68			945.63
120 Swayzee	Gerald Leavell	55	5	59	77	136		21	15		23		2			3	780.00	14.21		34.00	828.21
121 Sycamore	Nannie Hunter	168	52	40	20	60	2	7	5	8	4		3			1	744.50	60.00			804.50
122 Terre H., Gr'w'd.	Aaron Hayhurst	77	7	525	162	687		40	2	33	20		2	2		2	2240.00				2240.00
123 Terre H., Hl mn.	Ray Smith	100	22	375	188	453	1	27	5	84	28		4	3	3	7	2860.00	79.38			2939.38
124 Terre H., 6th Ave	Willis Clock	71	16	176	280	456		26	17	46	13		1		1	1	1385.00	137.07		207.30	1729.37
125 Terre H., N. Side	Naomi Shumaker	104	67	140	160	300	2	15	16	10	15		4	1	2	4	1320.96	36.00		64.00	1420.96
126 Terre H., West	R. S. Wheeldon																				
127 Tipton	L. L. Waddell	138	52			571	2	178	67				2		6	5	2600.00	250.00			2850.00
128 Twin Oaks	O. W. Spencer	76	26	114	31	145	2	11	15	7	2		4	4	2		1186.00	82.94		34.50	1303.44
129 Tyner	C. Klopfenstein	81	15	213	218	431	1	3	2				2		1		1856.69	145.90	180.00		2182.59
130 Versailles	C. E. Bowker	69	52	142	258	400	2	100	63		12		2			1	1924.67	110.00		381.55	2422.22
131 Vevay	Allen Jump	91	39	57	33	90	2	29	14	50	15		1				405.63	149.65			555.28
132 Vincennes	Herman Smith	72	94	369	359	728	3	89	68	47	25	7	4	2	1	3	1170.00	22.30	36.50	585.00	1813.80
133 Wabash	J. L. Arnett	82				300		80	30		20			1	5	11	3120.00	225.00			3345.00
134 Walkerton	Oscar Felsburg	75	45	138	72	210		2		30	6	9	2			2	1029.50	104.50		4.00	1138.00
135 Washington	J. M. Burcham	102	99	120	120	240	3	56	24	21	62	18	3	4	1	1	2120.25	70.00		2.00	2192.25
136 Westport	E. I. Faidley	75	8	153	130	283	3	13	10	33	36	7	2	3		3	1956.20	333.08	180.00	227.37	2696.65
137 Wheatland	D. W. Bunting	97	19	129	139	268	5	49	42	37	15	6	2	2			958.00	73.50		154.90	1186.40
138 Winchester	Lonnie Cole	70	14	150	151	301	2	47	23	160	37	12	4		2	2	1960.00	264.35		161.65	2386.00
139 Windfall	Hascue Carter	62	5			75	2	80			10						1069.09	67.72	44.09		1170.90
140 Birdseye	Estel Eckart	46	6	50	100	150	1			10	6						388.00	40.00		10.00	438.00
141 Cherubusco	Everett Shelhamer	182				50	5										439.00				439.00
142 South Marion	D. D. Emery	73	45	200	150	350	3	20	15		50		4			2	1050.00	50.00		125.00	1225.00

SUNDAY SCHOOL REPORT

Church	No. Teachers and Officers	Net Enrollment	Total Enrollment	Average Weekly Attendance	Average Weekly Attendance Last Report	No. on Cradle Roll	Loss	Gain	No. Sessions	No. Scholars Converted During Yr.	Cash Brought Forward	Regular Offerings	Birthday Offerings	Special Offerings	Total Receipts	Literature	Equipment	Total Expenditures	Cash on Hand
Alexandria	8			64	22	26		42	52	15	92.75	438.22			530.97	402.42		402.42	128.35
Anderson	20	457	508	277	265	35	12		52		174.04	952.32	41.39	278.82	1446.60	434.76	905.95	1340.71	105.89
Andrews	8	74	82	53	50	14		3	52	22	546.95	288.19	17.84	916.26	1769.24	65.06	1401.55	1419.94	299.30
Aurora	12	85	97	84	87	7		3	50		359.85	428.82			788.67	152.80	261.89	414.69	373.98
Bass Lake																			
Bedford	6			37	30	12		4	52	25	14.55	213.48	16.29		244.32	44.00		216.29	28.03
Beech Grove	8			66	70		4		51		14.35	586.92	16.30		617.57	257.89		616.74	.83
Bethel	9			42	39			3	52	4	60.29	161.40	14.16	79.17	629.94	68.80	485.24	554.04	75.90
Bicknell	12	108	120	76	62	27		14	52		36.88	210.23	15.22	173.81	436.14	164.77	123.75	387.28	48.86
Boonville	5		65	33					52		407.76				407.76			407.76	
Brazil	12	126	138	100	106				52	6	20.52	478.08	24.82	125.49	648.96	129.32		432.29	216.67
Brown's Chapel	9	76	85	72	72				52		15.97	290.95	17.08	58.72	382.72	81.40	285.83	367.23	15.49
Burns City																			
Centerville	5			20	22		2		52	1	19.87	112.28			132.15	121.57		121.57	10.58
Chesterfield	8			60					52		8.07	219.95	11.37		239.39			227.69	11.70
Clarks Hill																			
Clarksburg	9	119	128	79	54			25	52	39	36.73	367.27		70.76	474.76	237.42		438.79	35.97
Coalmont	5	22	27	8	8				50	6	3.17	22.49	.61	12.35	38.62	20.37		26.65	11.97
College Corner	7			44	38	24		6	52		4.65	71.70	9.37	33.77	202.66	32.90	42.70	191.10	11.56
Concord	13	84	97	55	53	2		2	52	4	25.00	47.72			72.72	12.50		57.34	15.00
Connorsville	8	72	80	51	76	14					10.08	129.64	11.14	34.06	293.27	53.47		283.18	10.09
Delphi	10	85	95	109	73	14		36	52		117.07	564.98	29.67	20.56	738.48	169.01	467.99	637.00	101.48
Deputy	5		134	24		16			52		2.10	68.65	9.06	39.62	160.28	42.95		203.23	2.10
East Columbus	16	213	229	159	142	23		17	52		78.57	567.53	5.90	546.76	1198.76	566.55		1194.21	4.55
East Enterprise	10	74	84	57	64		7		52		48.89	210.15	5.04	111.98	376.05	84.19	291.86	376.05	
Edinburg																			
Elnora	10	50	60	54	48	13		5	52	5	33.05	141.94		28.60	203.59	65.05	120.76	185.81	17.78
Elwood	15			155	190		35		50		369.03	445.11	39.96	674.74	1628.84	208.62	173.94	1242.40	386.44

SUNDAY SCHOOL REPORT

Church	No. Teachers and Officers	Net Enrollment	Total Enrollment	Average Weekly Attendance	Average Weekly Attendance Last Report	No. on Cradle Roll	Loss	Gain	No. Sessions	No. Scholars Converted During Yr.	Cash Brought Forward	Regular Offerings	Birthday Offerings	Special Offerings	Total Receipts	Literature	Equipment	Total Expenditures	Cash on Hand
English	13	130	143	135	119	42		16	52		22.74	362.00	18.98		403.72	180.11	174.30	354.41	49.31
Epsom	6			36	33			3	52		19.07	105.89	8.56		175.17	44.90	97.97	142.87	32.30
Evansville, 1st	14	248	262	146	148				52		87.00	435.71	201.95	105.45	835.34	166.18		731.66	103.68
Evansville, F. H.	15	268	279	249	217	52		32	52		80.41	1011.95	38.75	936.65	2094.76	219.00		1820.15	274.61
Fairmount	6			31	36	26			52		25.42	161.69	8.72	6.54	202.37	56.03	95.49	202.06	.31
Forest				72	68	21	4		50		36.65	196.54	18.03		417.88			377.21	40.67
Frankfort, 1st	14			235	229			6	50		456.80	698.53	6.27		1830.94	387.26		1777.00	53.94
Frankfort, E. S.	7	33	40	32	27			5	52		44.87	124.73	5.18	2.76	177.54	58.81	26.00	156.80	20.74
Frankton	7			35		3				2	22.10	173.37		10.00	205.47			188.99	16.48
French Lick				93							22.84	271.27	30.34	493.21	1053.29	143.39	125.85	1015.34	37.95
Fort Branch																			
Fort Wayne																			
Fulton	7			58	53	33		5	52	15	43.68	194.27		346.91	584.86	82.57	445.92	528.49	56.37
Gas City	12		100	68		24					10.82	253.42			264.24	246.53			17.71
Greenfield	4			17					52		64.24	2.88			67.12	53.00	12.00	65.00	2.12
Greensburg	8	109	117	63	60	10		3	52		23.35	252.94	18.21	192.10	486.60	215.83	226.41	442.24	44.36
Greenwood	11	91									4.36	301.22	14.38	21.64	341.60	87.53	42.86	335.88	5.72
Hartsville	5	36	41	21	16				52	7	14.67	54.15	6.14	6.70	122.41	41.27	40.31	122.33	.08
Harvey Flats																			
Hope	7	68	68	53	51	30			52		5.93	169.67	7.60		178.79	38.33	125.86	164.19	20.53
Howard Chapel																			
Huntington	9	121	130	76	74	35		2	52	6	21.18	176.88	18.93	97.88	314.87	101.23		308.13	6.74
Indpls., 1st	16			165	171	23			50		21.12	585.37	23.10	90.07	719.66	158.26	490.49	648.75	70.91
Indpls., 2nd	11	76	87	84	76	15		8	52		226.52	349.17		277.61	853.30	94.46	449.08	778.12	75.18
Indpls., Riverside	8			30					52		26.70	206.44			233.14	171.96			61.18
Indpls., N. Side	14			114	112			2	52		1.10	350.78	13.73		365.61	327.28	13.73	341.51	24.60
Indpls., Br'kside	16	80	96	58	81	14	23		50	7	52.86	573.25	6.66	102.52	735.29	123.00	579.89	702.89	32.40
Indpls., Valley V.	8	85	93	62	60	36		1	52		51.74	193.34	12.68	16.49	530.14	102.89	209.26	507.72	22.42

SUNDAY SCHOOL REPORT

Church	No. Teachers and Officers	Net Enrollment	Total Enrollment	Average Weekly Attendance	Average Weekly Attendance Last Report	No. on Cradle Roll	Loss	Gain	No. Sessions	No. Scholars Converted During Yr.	Cash Brought Forward	Regular Offerings	Birthday Offerings	Special Offerings	Total Receipts	Literature	Equipment	Total Expenditures	Cash on Hand
Indpls., Pros. St.	8	70	78	65	54	22		11	52		200.89	353.63	16.29	230.09	800.90	65.26	212.12	277.38	204.52
Indpls., Central	3	38	41	18	24	14						70.35				57.73			22.62
Indpls., Bates St.	6			42	48	8	6		52		6.00	193.87			199.87	50.21		183.31	3.56
Indpls., McCarty	8	57	65	56	42			14	52		68.22	467.05	11.88	19.66	554.93	100.77	365.20	466.03	88.90
Indpls., Westside																			
Jasonville	18	176	194	123	125	47			51		35.64	302.55	9.45	45.24	392.88	195.29	148.65	343.94	48.94
Jonesboro	5			47					52										
Knightstown	17	222	239	165	163			2	52		287.57	480.00	17.89		785.46	414.28	311.41	725.69	59.77
Kokomo, Purdum																			
Kokomo, N. Side																			
Lafayette	8	49	57	38	46	8	8		52	1	63.99	125.67			264.07	91.36	38.96	211.53	52.64
Lagrange	6	64	70	44	47	3	3		52	1	29.75	650.21			679.96			672.26	7.70
Lawrence																			
Lawrenceburg	11	100	111	113	111				52		119.87	557.60	27.12		704.59	139.56	455.82	595.38	109.21
Lebanon	14	173	187	117		96			52										
Leisure																			
Linton	7	53	60	51	47	16		4	52		123.84	114.17	9.52	108.07	355.60	53.46	265.83	331.51	24.19
Logootee	7			52	50				52		6.64	69.32			178.38	29.48	25.89	164.72	13.66
Logansport	13	245	258	192	172			20	52		528.46	1102.58	23.09	1859.84	3513.91	271.38	2284.94	2558.32	955.65
Madison	8	100	108	81	75			6	52		113.76	17.02	25.20	41.06	197.64	75.15	111.41	186.56	11.08
Marengo	4			27	26				52			79.67	3.60	16.39	99.56	79.67		99.56	
Marion, 1st	15	215	230	131	135	47	4		52		.49	475.58	25.69	431.10	932.86	179.06	686.23	865.29	67.57
Marion, Grant St.	11			74	81		7		52		39.27	382.30	10.86	83.00	515.43	206.75	282.31	489.96	25.47
Mecca	4	13	17	15								67.02			67.02	19.02	43.25	62.27	4.75
Medora	7	77	84	53	52				52		16.81	133.62	9.06	3.32	172.81	46.31	119.57	165.88	6.93
Merom	6	30	36	32	40	6	8		52		34.72	112.54	8.92		156.18	43.21	93.84	137.05	19.13
Michigantown											17.35	174.70	198.22	261.68	652.01	119.22	322.59	648.21	3.80
Milton																			

SUNDAY SCHOOL REPORT

Church	No. Teachers and Officers	Net Enrollment	Total Enrollment	Average Weekly Attendance	Average Weekly Attendance Last Report	No. on Cradle Roll	Loss	Gain	No. Sessions	No. Scholars Converted During Yr.	Cash Brought Forward	Regular Offerings	Birthday Offerings	Special Offerings	Total Receipts	Literature	Equipment	Total Expenditures	Cash on Hand
Mitchel	9	101	110	70	76	21			52	6	16.11	169.24	11.71		266.09			233.30	32.79
Monon	6	22	28	23	23		6		47	4									
Morgantown	9	72	81	51	50	14		1	51		35.66	356.49			392.15	373.14		373.14	19.01
Muncie	9	154	163	111	121	55	10		52		132.01	356.45			488.46	269.56	170.71	440.27	48.19
New Albany	6			44	35			9	52		52.97	315.24	14.06		398.27	68.37	240.06	308.43	89.84
New Carlisle	8	32	40	47	57		10		52		55.61	318.90	12.44	162.88	474.14	85.72	353.81	438.53	55.61
New Castle	8			103	114		11		52		68.72	164.92			280.48	106.57	7.55	216.28	64.20
New Goshen	8	32	40	20	18			2	52		4.47	67.77	7.86		186.42	31.51		186.11	.31
Noblesville	7		41	34	23	23		11	52			136.55			136.55			135.60	.95
North Vernon	10	153	163	93	84	24		9	52	2	54.03	376.59	20.69	43.45	494.76	110.61	359.07	469.68	25.08
Norway	5	31	36	26		13			51	4	3.34	157.00			160.34			125.19	35.15
Nappanee	8	56	64	36	30	20		6	52		113.06	1248.43		253.76	1615.25	39.03		1432.08	183.17
Oaktown	7			29						2	24.71	98.69	11.26		134.66	57.72	54.06	111.78	22.88
Orleans	8	80	88	46	40			6	52										
Paoli	6	63	69	60	55	14		5	52		26.77	151.52	4.32	47.00	229.61	58.27	151.84	210.11	19.50
Petersburg																			
Poplar Grove	4	67	71	30	26	24		4	52	14	17.38	52.76	8.07	15.75	93.96	49.36	41.58	90.94	3.02
Prairie Creek	7	40	47	38	42	6	4		50		431.06	576.30			1007.36			557.19	440.17
Richmond, 1st	10	90	100	72	70	25			52	31	51.61	263.03	11.27	35.63	361.54	90.76	45.64	284.73	76.81
Richmond, E. S.	7	98	105	79	82		3		52	38		358.00	12.00	15.00	385.00	84.00	301.00	385.00	
Rising Sun	6	48	54	39	23			16	52	12	119.65	448.00		28.45	152.58			139.58	13.00
Rodney																			
Rushville	7	75	82	48	48	39			52		13.20	97.35			110.55	61.10	43.81	104.91	5.64
Sanford	5	50	55	31	31						96.10	9.91			106.01	48.89	47.22	96.11	9.90
Scott City	5			24		1			52		7.68	45.04	4.31		57.03	30.80	7.17	37.97	19.06
Scottsburg	7			20					52		2.10	61.85		4.67	68.62		64.47		4.15
Seeleyville																			
Seymour	8	32	40	49	24			25	52	12	14.83	171.45	21.60		207.88	40.23		207.88	
Shelburn																			

SUNDAY SCHOOL REPORT

Church	No. Teachers and Officers	Net Enrollment	Total Enrollment	Average Weekly Attendance	Average Weekly Attendance Last Report	No. on Cradle Roll	Loss	Gain	No. Sessions	No. Scholars Con- verted During Yr.	Cash Brought Forward	Regular Offerings	Birthday Offerings	Special Offerings	Total Receipts	Literature	Equipment	Total Expenditures	Cash on Hand
Shelbyville	11	152	163	117	107	42		10	52	2	175.23	547.64	18.88	66.67	808.42	118.39	616.05	734.44	73.98
Shoals	9	116	125	69	71	12			52		3.24	168.37	17.10		322.93	89.84	1.49	306.83	16.10
Somerville	6	94	100	76	58			18	51		16.46	952.25			968.71	54.58	909.26	963.84	4.87
South Bend	17	200	217	125	113	61		12	52		120.09	595.06	29.12	156.24	900.51	245.53	648.50	894.03	6.38
Spearsville	5	36	41	35	40	5			51		10.01	130.84	5.78		136.62	42.55	81.36	123.91	22.72
Sullivan	8	56	64	43	46		3		52		50.48	158.23	11.84	120.45	378.37	171.59		349.70	29.67
Swayzee	9			51	23	17		28	50		119.66	288.91	4.08	17.43	420.08	88.84	127.51	353.73	66.35
Sycamore	6	50	56	30	38			8	48	11	42.49	74.44			117.23	25.91	25.82	51.73	65.50
Terre H., G'n'wd	9		143	86	81	20		5	52		47.32	298.91	23.77	1056.01	1426.01	92.33	1305.18	1397.51	28.50
Terre H., Hul'n	13	290	303	176	167	10			52		73.35	524.18	29.61		1953.67			1899.46	54.21
Terre H., 6th A.	11	44	55	43	31			12	50	9	12.84	227.29	1.55	107.69	349.37			346.14	3.23
Terre H., N. S.	6	33	39	16					52	4	4.16	79.57		31.79	111.36			102.22	9.14
Terre H., West																			
Tipton	17			176	185	83	11		50		627.77	789.61			1417.39	326.35	597.95	1044.26	373.13
Twin Oaks	9	91	100	67	62	14		5	52		91.01	335.72	12.90		439.63	37.65	357.31	414.65	24.98
Tyner				22					52		13.04	107.66	3.32	37.88	161.90			147.05	14.85
Versailles	9			85	70			15	52		91.60	302.48			394.08			354.23	39.85
Vevay	9	31	40	26					52		10.83	55.17	5.95	.84	99.07	20.16		86.20	12.87
Vincennes	9			62					52			212.66	8.45		221.01			186.12	34.87
Wabash	15	347	362	215	191	104		24	52		159.24	1234.60	6.24	327.80	1727.88	283.42		1447.64	280.24
Walkerton	10	100	110	50	44	18		6	52		9.73	192.99	7.67	109.59	319.98	72.08	241.38	313.46	6.52
Washington	20	180	200	98	93	10		5	52	23	923.51	18.52			942.03	73.72		942.03	
Westport	10	87	97	72	78	29	6		52		7.08	270.00	29.02		306.10	129.55	176.55	306.10	
Wheatland																			
Winchester	9			56	60	40			52	9	72.31	351.32			423.63			334.39	89.24
Windfall	9	49	58	43	50	20		7	51		8.16	175.91			184.07	84.44	98.25	182.71	1.35
Birdseye	4	24	28	19								85.23	1.55		87.43	14.75	55.90	70.65	14.58
Churubusco	8	11	19	20							291.59	5.50	3.34		300.43	175.00	23.00	223.00	113.00
South Marion	6	34	40	30					10										

TREASURER

	Cash Brought Forward	Regular Offerings	Special Offerings	Total Receipts	Pastor's Support	Rents	Interest	Improvements	Local Indebtedness	Evangelists' Offerings
1	\$ 260.04	\$ 3338.22	\$ 655.59	\$ 3223.85	\$ 925.00		\$ 15.75	\$ 886.85		\$ 281.00
2	813.26	10642.10	6492.80	20234.30	3380.00			2371.45	6375.00	612.94
3	51.98	1872.43	428.03	2352.44	1300.00	32.21		31.50		185.72
4	882.20	5866.43	89.39	6838.02	2080.00			632.48		600.00
5	25.75	993.57	10.72	1030.04	702.11					135.42
6	63.00	2032.55	395.00	2490.55	720.00		120.00		1024.26	395.00
7	4.66	1393.67	282.68	2184.01	886.00			192.53		375.00
8	157.92	1681.09		1839.01	1190.83					200.00
9	168.57	3743.00	462.78	4374.35	2274.63			133.36		465.00
10		901.90	619.40	1521.30	901.90			43.00		175.00
11	31.15	2282.98	825.37	3139.50	1465.98			137.81	120.00	438.63
12		2459.69	2188.05	4647.74	2459.69					
13		732.56	988.88	1903.98	451.43	126.00		762.74		
14	182.54	2862.87		2924.56	1710.90	348.00			112.22	165.17
15	61.69									
16	244.66	3229.23	1306.75	5206.13	1560.00		24.00	298.66	100.00	553.23
17	31.13	342.32	122.92	496.37	227.90	6.00				121.59
18	2.82	1886.91	260.50	2289.18	1426.95					191.11
19	25.61	1328.91	567.88	1950.79	1225.00				76.80	327.75
20										
21	200.66	2598.96	1070.29	7119.91	1807.96			4010.79		
22	14.87	3781.06	750.60	3795.93	1837.00	196.98		211.85		431.00
23	7.00	1164.00		1914.60	1164.00	127.00				290.00
24	213.46	4603.23	1872.81	6689.90	2340.00			791.96		706.00
25	62.38	2366.10	1241.80	3607.90	1904.83			12.97		615.00
26										
27	206.14	1666.54	929.79	2802.47	1373.25			264.11		370.00
28	775.82	6523.13	2113.66	13413.40	2650.00			526.05		965.00
29	238.40	4905.61	841.69	5985.70	2836.61			534.29		560.00
30		966.61	341.94	1358.95	841.15					150.00
31	981.72	8316.27		9297.99	2600.00			681.12		440.00
32	11635.09	11385.66	5985.31	29006.06	3120.00			178.14		775.00
33	17.89	912.77		1298.42	727.30			615.21		181.47
34	290.00	2960.88	655.87	4080.39	1456.00			1421.42		400.00
35	1323.39	10932.00		12255.39	3203.00	690.00				844.50
36	16.34	744.14	175.48	935.96	446.80					
37	22.55	736.61	381.52	1194.98	674.63					199.78
38	3591.42	5668.67	268.17	9528.26	2080.00			3079.01		799.93
39										
40										
41	77.27	2593.09	1746.77	5105.99	2045.76			82.79		463.74
42	83.00	2167.40	68.36	2628.99	2470.00	135.00				200.00
43	25.00	617.93	304.58	947.51	505.00					256.25
44	244.40	3925.99	1982.13	6295.81	2080.00					532.09
45	3.83	1608.54		1612.47	1134.05		8.63	845.99	459.45	75.00
46	6.64	442.69		921.08	302.15			132.50		161.53
47										
48	33.38	1326.41	927.55	2287.34	1123.00			178.60		509.14
49		1048.53	372.07	1420.60	234.20			750.00		371.30
50	285.42	2313.23	1005.98	3604.63	1570.00					392.00

REPORT

Home	District Indebtedness	District Budget	District Home Missions	Foreign Missions	Home Missions	General Administration Expense	Bible Schools	Incidentals	Special Interest	Total Expenditures	Cash on Hand
\$	\$283.00	\$71.41	\$154.85	\$127.74	\$120.00	\$15.00	\$69.77	\$2978.69	\$275.16		
1.28	689.19	123.75	1592.61	530.07	18.57	621.29	3251.63	19667.93	566.37		
.67	185.16	84.41	84.41	84.41	153.60	27.34	410.32	2318.46	33.98		
	496.32	73.47	404.32	153.60	73.47	114.89	708.82	6512.44	325.58		
	69.36	3.50	17.00	3.25	4.50	4.00	68.36	1027.32	2.72		
	25.00	35.00	13.00	16.29			421.01	2290.55	200.00		
.25	10.00		93.00				220.04	2178.15	5.86		
	374.33		229.08	66.54	10.00	5.00	399.37	1635.07	203.14		
			86.00		54.22	50.00		4106.68	267.67		
	110.09		75.31	53.21			730.31	1521.30			
5.48	252.49		346.00				1537.14	3029.34	110.16		
	74.22		34.55	5.80				4595.32	52.42		
	69.60	4.80				5.00	314.03	1739.90	164.08		
5.89							7.53	2745.80	178.76		
8.50	12.00	375.11	31.00	350.25	96.92	40.50	109.60	1034.31	4620.97	585.16	
		16.68	2.41	17.00	10.21	7.00	4.00	25.31	460.57	35.27	
		326.11	147.52	72.06	55.16		41.00	327.62	2271.79	17.39	
		122.50		61.96			5.00	58.49	1856.49	94.30	
2.60		213.66	108.35	33.16	27.16	27.44	36.38	903.67	7107.57	12.34	
2.25	50.00	193.31	196.07	27.16	20.00	20.00	33.50	320.14	3586.12	209.81	
5.20	6.50	296.50	5.76	80.46	20.00	50.04	9.00	2573.22	2573.22	7.00	
	326.56	54.00	417.35	92.76	50.04	177.36	843.44	6103.16	586.34		
		227.59	8.40	395.45	14.12	5.04	23.65	321.15	3558.20	49.70	
7.12		148.01		36.77	51.46	8.63	253.16	2733.57	68.90		
7.95		695.50		499.01	108.78	196.61	80.00	3342.06	9082.81	4330.59	
7.37	34.00	374.40	71.00	500.29	108.78	62.32	435.28	5853.71	131.95		
2.56		107.06	8.56	107.04	21.42	6.61		1358.95			
0.30	82.85	490.86	58.15	406.30	44.00	222.94	177.91	3919.29	8871.92	426.07	
		1098.52	140.25	2556.26	659.77	136.14	6143.74	15171.09	11834.97		
5.80		55.00	19.75	132.03	31.71		101.47	1297.43			
2.87		238.42	786.45	989.77	48.00	39.75	749.37	3698.04	382.35		
		786.45	400.86	989.77	48.00	186.21	332.77	11223.14	1052.25		
9.60	160.00	61.43	11.84	35.88	10.00	6.14	233.67	907.57	28.39		
				54.60	50.40	243.13		1187.93	7.05		
0.35	74.15	328.21		423.72	182.36	38.93	579.00	8052.77	1475.49		
5.50		282.48	1033.80	173.55	85.00	97.61	355.29	4883.02	222.97		
		36.01	6.89		13.00		240.19	3101.09			
.50	17.00	418.09	35.00	45.99	47.97	113.89	936.58	935.00	12.51		
		108.21	334.52	8.20			69.49	5917.61	378.20		
			109.49					1565.20	47.27		
		32.75	32.05	32.00	20.00	11.00	187.45	919.68	1.40		
		132.63	11.67	27.88	6.60	7.24	251.85	2242.51	44.83		
		22.00	41.00			5.50		1420.60			
		260.71	15.36	100.20		14.00	205.49	3157.76	446.89		

TREASURER'S

	Cash Brought Forward	Regular Offerings	Special Offerings	Total Receipts	Pastor's Support	Rents	Interest	Improvements	Local Indebtedness	Evangelists' Offerings
51	713.22	8384.36	3436.92	12334.50	3470.00			2099.29		907.60
52	1274.05	4512.31	1523.18	7309.54	2671.95			238.15		280.00
53	46.54	2364.28		2410.82	895.42	200.00		114.67	819.56	
54	1490.90	5108.78	2078.51	8750.22	2777.50			229.89	617.34	840.00
55	67.00	3672.44	1160.99	4900.43	2620.00			383.05	363.05	395.00
56	15.88	2290.99		2467.14	1445.00			91.50	154.21	207.06
57	2119.78	3043.20	733.64	5866.62	981.25	168.00		391.64		345.00
58	280.41	2661.98	394.15	3336.54	1440.00	50.00				100.00
59	606.95	144.33		751.28	168.67				206.35	166.40
60	1504.92	450.97		1955.89	1300.00					354.00
61	64.78	4189.43		4254.21	1870.00	341.50	88.00			425.00
62										
63	841.23	4512.10	1680.70	7034.03	2650.00			698.14		530.00
64	219.20	1421.97		2094.07	912.50	565.00		42.89		
65	72.68	5163.82	3140.65	9260.44	2465.00			278.70		559.40
66										
67	151.48	1913.42	345.95	2552.42	1264.00				278.79	250.00
68	20.57	1353.13	228.75	2203.45	710.00	270.00		762.39		228.75
69										
70	1009.27	6121.29	1561.71	8692.27	2284.00			1076.01		634.50
71	47.49	4361.13	2421.15	6829.77	2481.00	157.53	852.39			490.00
72										
73	29.53	1830.72	600.02	2460.27	1626.67					195.10
74		1721.65	1305.78	3027.78	1300.00			240.55		508.55
75	5773.60	10207.29	3200.53	19181.42	2860.00			4686.69		583.98
76		2445.74	291.65	2860.50	1300.00			834.00	457.02	460.00
77		871.13	3.71	874.84	370.48	265.00				225.65
78	253.55	6632.72	5163.72	12049.99	2820.00			517.11		570.00
79	20.37	1969.82	47.10	2037.29	1479.56	120.00				128.54
80	9.37	208.65	291.93	509.95	193.57			65.00		75.00
81	4.30	1237.80	659.49	1901.59	863.53		4.20	174.84	111.00	280.00
82	15.26	894.86	697.77	1607.89	815.00			120.93		403.00
83	60.67	3774.72	996.24	4831.63	1737.80			440.14		555.00
84		370.62	366.51	776.80	275.94			83.62		102.41
85	23.62	2014.22	193.49	2231.33	1370.00			196.47		193.49
86	87.94	1357.01	440.61	1885.56	1030.00	152.25				195.15
87	802.14	2873.90	638.48	4314.52	1560.00			874.80		422.13
88	7386.55	9004.26	2250.17	18640.98	3220.00			194.35		687.21
89	735.83	2254.24	435.43	3425.50	1295.00		18.00	240.15	300.00	366.31
90	420.78	2066.92	1138.02	3625.72	1195.00	170.00		1016.29		311.00
91	2150.90	4658.56	261.94	8419.72	2340.00			141.23		435.54
92		255.37	276.80	532.17	254.23		42.25		383.27	145.00
93	32.54	1431.27	531.96	1995.77	1003.34	237.00				81.00
94	164.58	1839.56	757.21	2761.35	1627.50			194.75	136.89	126.33
95	20.64	1347.20	31.20	1309.04	503.26				197.00	
96	132.92	2047.38	9740.29	11920.59	1145.00	195.00	200.00	4197.10	4925.00	227.91
97	59.61	1498.56	423.00	1981.25	945.00		3.68	52.00	142.60	285.19
98	49.46	2114.38		2163.84	1281.56					
99	111.43	2099.48	855.43	3066.34	1309.11		99.16	206.12	325.00	236.00
100										

P O R T

Home	District Indebtedness	District Budget	District Home Missions	Foreign Missions	Home Missions	General Administration Expense	Bible Schools	Incidentals	Special Interest	Total Expenditures	Cash on Hand
	13.00	790.08 431.44	65.20 32.88	722.04 858.70	521.19 155.30	100.00 147.91	203.10 97.53	1259.73 294.29		8941.50 6273.59	986.12 1035.95
		697.40 179.81		556.79 531.87	8.21 15.88	114.90 72.00	151.10 38.83	2115.13 311.27		8309.14 4887.60	441.08 12.83
		23.65 283.38 233.17	21.00 4.46	87.11 450.64 175.06 20.00	46.92 83.31 101.64	10.00 26.50 22.92	30.40 101.25	252.15 796.25 72.26		2426.38 3190.27 3077.87 695.87	40.76 2800.45 258.67 56.41
		301.22	11.75	367.84	96.00	74.00	41.94	1013.74		4167.15	187.06
8.52		435.01	24.00	364.89	180.59	56.00	105.54	850.88		6260.20	773.83
8.50		28.32	2.55	211.25	2.88	34.00	23.21	16.65		1960.17	133.90
7.44		637.73	111.58	843.29	91.33	87.00	454.73	2449.52		8502.72	757.72
		55.00		111.57	30.00			439.48 108.90		2428.84 2173.44	123.58 30.01
5.00	80.00									7372.45	1319.82
		641.93	65.08	539.62	265.06	72.00	122.42	1221.83		6825.27	4.50
36.00		483.50		706.74	188.08	63.60	87.15	1279.28			
19.75		180.47	14.65	153.27	41.00	41.00	18.83	229.19		2454.64	5.63
20.50	76.00	226.23	24.60	82.00	41.00	41.00	29.82	384.48		3027.43	
58.53		496.20	48.00	1951.44	78.00	78.00	324.17	1950.90		13719.96	5461.46
		198.72	5.00	26.74	293.96	78.00	8.12			2779.69	61.04
		5.00	10.17	11.01	9.25	12.94	17.49	74.60		871.02	
48.00	490.00	602.65	58.00	898.10	94.75	96.00	215.10	5091.92		11501.63	548.36
	4.00	24.10		38.00	8.69	8.00	15.00	261.56		2036.76	.53
10.50	10.00	132.00	3.00	30.93	26.59	12.94	10.00	108.79		509.95	
15.78	40.00	77.61	20.58	72.28	26.59	6.00	8.76	24.22		1607.89	.77
		334.29	2.11	75.20	28.80	41.48	675.40	150.58		4346.73	484.90
		65.39	7.20	82.09	15.75	6.62	449.33	755.25		755.25	21.55
5.40	21.50	75.58	2.00	233.37	108.49	15.11	34.13	231.42		1755.80	129.76
25.50	238.15	12.44	97.80	609.69	51.25		393.43	701.53		4117.36	197.16
	97.30	202.27	35.00	80.28	73.00	750.00	16.52	379.05		9542.50	8998.48
13.44		160.33	10.08	55.76	73.00			379.05		3064.61	360.89
		478.97	44.40	556.10	73.00			375.90		3352.07	273.65
5.65		26.08	105.53	105.53	73.00			1364.99		5999.60	2420.12
		142.96	4.50	98.08	14.07	44.14	22.10	26.58		1750.08	17.73
		101.57	15.70	103.22	13.42		12.18	308.66		2730.48	45.69
		19.93	4.10	4.10	1.00		1.90	348.28		1496.42	30.87
10.00		115.24	7.00	78.13	110.00	8.00	11.53	492.63		11828.51	92.08
2.00	139.82		20.21	91.46	37.32		24.22	452.84		1918.35	62.90
10.30		180.67	4.25	111.44	32.80		7.57	443.84		2010.59	153.25
								542.45		3064.87	1.47

T R E A S U R E R ' s

	Cash Brought Forward	Regular Offerings	Special Offerings	Total Receipts	Pastor's Support	Rents	Interest	Improvements	Local Indebtedness	Evangelists' Offerings
101	4.95	540.65	379.04	924.64	460.25			586.44		270.0
102	155.48	2034.89	254.36	3830.53	1500.00			444.11		178.0
103	244.40	4309.81	1733.35	6287.56	2600.00				50.00	698.8
104	473.51	1850.69		2324.20	1040.00	240.00				240.0
105		861.66	191.50	4491.90	536.63			99.15		
106		2281.01	1487.33	5168.34	1260.00		46.80	2521.34	300.00	374.8
107		2032.04	2285.07	2295.07	965.11			245.50		220.0
108	263.03	1609.72	562.36	2177.08	995.00			267.71		306.8
109	328.27	539.64		539.64	359.64	187.50				
110										
111	40.72	781.60	104.31	928.93	569.53			124.00		210.1
112		950.56	479.11	1429.67	950.56			761.44		580.0
113								199.16		153.7
114	871.51	5380.12	1610.73	7862.36	2375.00			285.55		513.0
115	151.98	2825.09		2977.07	1565.00			1069.51	420.00	820.1
116	103.56	2196.07	466.89	2299.63	1137.00			37.00		75.0
117	736.04	7626.68	201.81	8828.61	3065.28	241.00			300.00	258.4
118	99.90	1152.83	460.00	1454.54	658.28					
119		1538.00	460.00	1998.00	945.95					
120	82.55	1300.22	227.29	1610.06	780.00			59.25		60.0
121	55.16	969.24	61.59	1083.99	744.50			6487.87		295.1
122	513.42	4742.45	4960.86	10216.73	2240.00			909.38		812.7
123	581.51	5292.84	4032.52	9325.36	2860.00		62.35	259.59	125.26	480.0
124	26.00	3166.39	610.10	3802.49	1535.00					252.0
125	18.68	2144.86		2165.54	1320.96					
126										
127	2020.28	6085.99		8106.27	2600.00			770.97		750.0
128	18.45	1747.73	395.29	2175.79	1186.00			212.60		219.2
129	10.08	2584.68		2594.76	1856.69	40.00				16.3
130		2669.09	218.00	2687.09	1924.67					250.0
131	1.09	400.66	220.24	660.89	405.63					194.8
132	155.77	2161.15	2078.61	2316.92	1170.00	585.00				285.0
133	756.78	6391.53	295.92	9226.92	3120.00					840.1
134	52.23	2397.82	295.92	2745.97	1434.11			108.15	433.74	226.4
135		3146.34	814.14	4018.73	2120.25					735.0
136	137.74	4182.54		4320.28	956.20					660.9
137		864.94	657.93	1892.61	1057.20			84.58		313.0
138	579.14	2944.64	1126.88	4650.66	1960.00			41.83		310.0
139	70.37	2484.58	64.92	2614.73	1069.09			60.00	590.00	476.0
140		592.96	37.80	592.96	388.00					110.0
141	64.98	621.35		724.13	439.00			41.90		
142					1050.00					

REPORT

Old People's Home	District Indebtedness	District Budget	District Home Missions	Foreign Missions	Home Missions	General Administration Expense	Bible Schools	Incidentals	Special Interest	Total Expenditures	Cash on Hand
5.39	64.52	46.81	9.03	28.12	63.80	52.00	3.25	18.75		898.04	26.60
26.96	52.01	205.62	25.72	322.00	4.90		20.58	30.51		3049.86	780.67
		413.80	34.43	163.52			75.82	727.24		5602.33	685.23
		230.44						110.78		1861.22	462.98
				17.45				202.32		888.55	3606.35
4.50	31.25	211.28	17.81	37.32	21.09	18.00	22.75	313.71		5168.34	
8.64		183.41	6.51	120.18	9.83	20.04	14.25	291.51		2204.40	89.67
14.58		153.97	6.00	88.22	48.97		22.01	338.18		2241.48	258.87
		25.74		26.90	13.22	12.00					
1.28		78.15	13.40	68.28		6.00	7.81	124.09		926.21	2.72
				9.50				95.50		1389.67	40.00
57.80		575.18	65.50	243.04		58.10	92.48	1783.89		6792.43	1069.93
		228.16	59.44	213.84		84.90	19.34	326.11		2848.65	128.42
5.00	145.50	166.00	54.54	120.33	27.00	7.00	5.00	13.60		2299.48	15
32.28	25.00	531.25	129.30	425.30	67.53	87.90	399.76	848.61		8372.45	408.77
	50.00	108.43	13.76	18.73	4.00	5.49	2.00	357.67		1307.07	147.47
			25.00	17.43				18.50		1998.00	1998.00
										1518.13	91.93
21.89		85.38	30.00	58.12	218.01		47.51	83.91		1034.14	51.85
39.56	76.00	331.36	60.00	1196.55	146.12	218.64	250.08	160.00		9889.87	326.86
	36.06	687.43	12.00	59.39	35.41	20.00	1455.90	1455.90		9470.94	435.93
		215.12	24.98	77.33	39.02		47.78	681.56		3664.76	137.83
		168.72		73.47						2129.12	34.42
39.60	360.00	482.12	95.80	451.08	10.00	87.00	154.70	516.73		7133.21	973.06
14.32		184.39		59.39	12.11		338.10	338.10		2065.76	110.03
		183.35		77.15			21.39	169.19		2557.90	36.86
		232.14		69.42	20.00					2691.58	21.60
5.00	36.00	81.00	10.00	13.10	6.54	5.00	20.00	12.90		633.00	27.89
		586.68	8.00	36.19		210.52	175.25	4.64		2254.33	66.59
		170.17	9.00	330.30		43.85	3206.32	73.95		8477.17	749.75
		393.85	17.25	58.25	22.00		39.39	673.42		2744.61	1.36
10.75		303.57	9.02	137.54	30.00		29.02	851.33		4254.00	66.28
12.00		304.79	14.22	20.76	2.75	27.00	325.33	325.33		1871.69	20.92
	5.30	45.00	5.62	402.28	31.88		66.05	395.80		3730.83	920.33
				10.36	5.00		10.60	238.14		2608.59	5.14
				19.80	18.00			61.05		538.00	54.96
										601.30	131.98

STATISTICAL REPORT

Church	Members on Roll Last Report	Names Dropped	Transferred by Letter	No. of Deaths	Total Removals	Additions by Profession of Faith	Additions by Letter	Total Additions Ordained Ministers	Licensed Ministers	Local Preachers	Deaconesses	Probationary Members	Lay Members in Full Standing	Total Members	Members of Voting Age Now On Roll	Preaching Services	Open-air Services	Jail or Prison Services	Church Prayer Services	Cottage Prayer Services	Other Services	Total Services	No. of Tithers	No. of Subscribers to Advocate
Alexandria	25					14	2	16		1			40	41	30	131			50			181	25	
Anderson	162	7	5	4	16	13	3	16	7	3			152	162	24	134			47	35		228		
Andrews	23		2		2	1	2	3				9	21	24	24	118			37			166	19	15
Aurora	72	2	4	3	9	9	1	10	1	1			71	73	70	139	15		46	44		244	43	
Bass Lake	17		1						1	1	1			16		113			49			162	9	6
Bedford	11					15	5	20	1				30	31	22	112			46			158	27	11
Beech Grove	20								1	1			18	20								10		
Bethel	18					6		6	1				24	25	20	118			42			160	20	10
Bicknell	56		3		3	3		3	2		2		52	56		104			52			208	42	30
Boonville	13												13	13		104			52			156	3	5
Brazil	22				1	12		12	1	1	1	2	12	34	22	103			45			148	25	16
Brown's Chapel	49			1	1	8		8	3	1			57	61		102			44	12		158		
Burns City																								
Centerville	20	4			4				1				15	16		104			51	23		178	8	
Chesterfield				1					2	3	2	2	28	37										
Clarks Hill																								
Clarksburg	53			1	1	18	3	21	1				72	73	64	152			54	22		226	40	15
Coalmont	6					1		1	1	1			5	7	7	114			61	22		199	4	4
College Corner	28								1				27	28	28	122			50	10		176	13	9
Concord	28				2	4	2	6	2	2		1	22	32	31	127			41	4		172	20	4
Connersville	25	1			1	6	2	8	1	1	2		22	31	29	109	2		45			154	26	20
Delphi	29	1		1	2	2		2	2	2			24	28	28	111		10	96	2		219	28	33
Deputy	13					7		7		2			18	20	20	129	4		52	23		248	12	6
East Columbus	79	14			14	22		22	2	1	2		82	87	81	150	3		47	24		224	50	30
East Enterprise	56	8		1	9	5		5		1	1		50	52		99			50	30		179	10	
Edinburg																								
Elnora	36		1	1	2	1		1	1				34	35		123			52	12		187	20	10
Elwood	114	5	3		8	4	1	5	5	1	1	5	99	111	111	151			59	53		267		

STATISTICAL REPORT

Church	Members on Roll Last Report	Names Dropped	Transferred by Letter	No. of Deaths	Total Removals	Additions by Pro- fession of Faith	Additions by Letter	Total Additions	Ordained Ministers	Licensed Ministers	Local Preachers	Deaconesses	Probationary Members	Lay Members in Full Standing	Total Members	Members of Voting Age Now On Roll	Preaching Services	Open-air Services	Jail or Prison Services	Church Prayer Services	Cottage Prayer Services	Other Services	Total Services	No. of Tithers	No. of Subscrib- ers to Advocate
English Epsom	92	17		1	18	6	3	9	4		1			78	83	83	140	20		46			206	75	35
Evansville, 1st	57	2		3	5	5		5	2		1	1			27	57	100			51	50		201		
Evansville, F.Hills	125	2	1	1	4	20		20	3	3	2			123	141	139	124			57	2	116	299	85	42
Fairmount	22	6			6	3		3	1					18	19		118			49			167	12	8
Forest	32	2			2	8		8	1	2	1				38	35	118			46	42		206		
Frankfort, 1st	191		10	8	18	16	24	40	26	5	2	1			213		125		52	45	42		264		36
Frankfort, E. Side	8	1		1	2		2	2	2						8	8	100		50			150	7	2	
Frankton	23	3				1		1	1					19	20	20	130			50			180		
French Lick	80			1	1	2	4	6	3						85	81	159			47	45		251	50	16
Fort Branch																									
Fort Wayne																									
Fulton	36	2			2			2	3		1			32	36	36	126			63	55		244		
Gas City	13													12	13	13	97			104			156	6	4
Greenfield	12								1					11	12		133	50					183	10	5
Greensburg	63	2		1	3	2	2	4	3					64	64	64	128			48	48	46	270	36	10
Greenwood	25								1	2	2	2		21	25										
Hartsville										1				9	11	11	90			43	30			6	2
Harvey Flats																									
Hope	25			1	1	4				2			3	25	28	25	132			52	44		228	13	5
Howard Chapel	9				2			2						11	11	11				51	4			2	
Huntington	39	5			5	3	1	4	3					38	38	38	143		12	45	30			24	14
Indpls., 1st	107	1	8	2	11	5	6	11	6		2				107		112			54	8		164		
Indpls., 2nd.	70	11	4		15				4	2	2			47	55	55	113			47					
Indpls., Riverside	37	28		1	29	4	2	7	2					15	15		104			52			156		
Indpls., Northside	80	7			7	5	1	6	3		2				79		142			50			192		
Indpls., Brookside	74	20	8		28	3		3	9	2	1			37	49	49	148			44	3		195	35	26
Indpls., Valley V.	27	2							1	1				23	25		135			49			184	15	

STATISTICAL REPORT

Church	Members on Roll Last Report	Names Dropped	Transferred by Letter	No. of Deaths	Total Removals	Additions by Pro- fession of Faith	Additions by Letter	Total Additions	Ordained Ministers	Licensed Ministers	Local Preachers	Deaconesses	Probationary Members	Lay Members in Full Standing	Total Members	Members of Voting Age Now On Roll	Preaching Services	Open-air Services	Jail or Prison Services	Church Prayer Services	Cottage Prayer Services	Other Services	Total Services	No. of Tithers	No. of Subscrib- ers to Advocate
Indpls., Prospect	38		1		1			3		1	1	2		20	37	33	139			46			230		10
Indpls., Central															21	20								2	
Indpls., Bates St.	6														6									6	
Indpls., McCarty	17	3	3		6		2	3	1					14	15	14	58			43					
Indpls., Westside	19					2		3	2	1	1			17	21	20	128			46			226		6
Jasonville																									
Jonesboro	57	3			3	3		3	4		2			51	57	55	132			60			244	41	26
Knightstown	17	1			1	1	2	3		2			3	11	16	13	104			52	14			7	
Kokomo, Purdum	96	4	6	1	11	4	2	6	2	1				88	91		136		2	57		52	336		
Kokomo, N. Side																									
Lafayette	45		2		2	3	8	11		2				54	52	52				51			171	10	
LaGrange	24	1				2			1					25	26	18	96			45				14	10
Lawrence																									
Lawrenceburg	92	13			13	1		1	3		1			76	80	75	134		4	17	46	35	246		40
Lebanon	69	1	3	1	5	4		4	2	1			3	63	69		125			50	58		233		31
Leisure																									
Linton	37	2	2	1	5	4		4	1	2			4	29	36	36	130			62	5		197	25	34
Logootee	41	10			10				1	2				26	31	31	134			46	1		252	20	4
Logansport	80	2	2		4	5	3	8	2	1	2			81	84	83	127		12	46			185	50	45
Madison	65	4	5	1	10	3		3	1	3	1			54	59		146		12	52	6		216	37	5
Marengo	13	3			3	4		4		1					13	14	156			52			203		
Marion, 1st	98	13	8	2	23	3	2	5	4	1	1		1	74	80	79	130			84	16		230	2	
Marion, Grant	37	9	2		11	5		5	1					30	31		114			48			162		
Mecca															15		78			45			123		
Medora	17			1	1	1		1	2		1			14	17	17	138			40			178	12	5
Merom	23			1	1					1					22	20	104			53	52		237	15	6
Michigantown																									
Milton	34	5		1	6	5		5		2	1		2		32	32									

STATISTICAL REPORT

Church	Members on Ro ^l Last Report	Names Dropped	Transferred by Letter	No. of Deaths	Total Removals	Additions by Pro- fession of Faith	Additions by Letter	Total Additions	Ordained Ministers	Licensed Ministers	Local Preachers	Deaconesses	Probationary Members	Lay Members in Full Standing	Total Members	Members of Voting Age Now On Roll	Preaching Services	Open-air Services	Jail or Prison Services	Church Prayer Services	Cottage Prayer Services	Other Services	Total Services	No. of Titlers	No. of Subscrib- ers to Advocate
Mitchel	40	14	2	1	17				2	1			7	22	23	23	127			48	7		182	11	15
Monon	11													9	11	11	105			46			151	6	1
Morgantown	48	1			1				2	1	7			37	47	47	126			51	102		279		
Muncie	115	2			2	1	1	2	6	1				108	115	114	209	1	14	49	4		276	70	25
New Albany	33	2			2		2	3	2	2	2	1		27	34	116	53						169		
New Carlisle	29			1	1	1		1	2	1				26	29	28	121			52			173	12	9
New Castle	75	9	1	2	12	10		10	3					70	73		104			96	96		296	50	
New Goshen	9									1				8	9		52			52	1		105	5	2
Noblesville	19			1		3		3		2				19	21	21	106			46			152	12	27
North Vernon	37	3	1		4	5	1	6	1	1	1			35	39		113			46				35	
Norway	27	8	6	1	15		2	2	1					14	15	14	104			52			156		11
Nappanee	19			1	1	1		1	1		2			16	19	19	104			52			156	13	8
Oaktown	31								5	1				25	31	31	96			38			173	9	5
Orleans														29	32	32	115			52	48		215	15	4
Paoli	28	1	3		4	6		6	1				1	28	30	29	132			48	34		214		15
Petersburg																									
Poplar Grove	21				5			5		2	1			23	26		84			49	5		55	14	8
Prairie Creek	49					3									52	52	100			40			140	24	14
Richmond, 1st	45	5	2		7	11	1	12	2					48	50	48	148			43			191	34	29
Richmond, E. Side	15	2			2				2					11	13	13	167		8	52			247	6	4
Rising Sun	12									1				11	12	12	104			52			156	3	9
Rodney																									
Rushville	37	7	1		8	1		1	4					26	30	30	132			46	47		225	24	10
Sanford	19			2	2	1		1						19	19		128								
Scott City	25								2					23	25	25	129			42	2		180	16	7
Scottsburg	10					5		5	2				1	12	15	14					50		15	5	
Seeleyville	21				2				1						20					52					
Seymour	20	2	2		4	5		5	2					19	21	21	134			44			178	15	3
Shelburn																									

STATISTICAL REPORT

Church	Members on Roll Last Report	Names Dropped	Transferred by Letter	No. of Deaths	Total Removals	Additions by Profession of Faith	Additions by Letter	Total Additions	Ordained Ministers	Licensed Ministers	Local Preachers	Deaconesses	Probationary Members	Lay Members in Full Standing	Total Members	Members of Voting Age Now On Roll	Preaching Services	Open-air Services	Jail or Prison Services	Church Prayer Services	Cottage Prayer Services	Other Services	Total Services	No. of Tithers	No. of Subscribers to Advocate
Shelbyville	58	1	1	1	3	3	2	5	2		3		3	53	61	58	120		23	41	40		272	53	20
Shoals	60	1	4	3	8		1	1	2	1	1			49	53	53	120			51	46		217		
Somerville	23	4	1		5	5			1		1		3	18	23	22	130			37	25		195	20	
South Bend	65	1	1	1	3	20		20	3	1			11	82	71	132		2		48		15	197		
Spearsville	18	8			8									10	10	112				52	45		209		2
Sullivan	16									1				16	15	66				33			99	15	5
Swayzee	17					2		2			2		1	15	19	17	144				20		212	10	
Sycamore	28									1				27	28	12	168			52			220	8	1
Terre H., Gr'nw'd	42	3	5	2	10	3	7	10	4	4				34	42	42	118			49	2		169	42	20
Terre H., Hulman	103	25	5	2	32	4	4		3					68	71	100		52	9	48	48		257	12	
Terre H., 6th Ave.	31	5		1	6	4	4			3				26	29	122				55	3		187		
Terre H., N. Side	13						2		1	2		2		8	15		128			52			180	9	8
Terre H., West																									
Tipton	72	8	1		9	4	4		1	1	4			61	67		174			48	17		291		
Twin Oaks	36	2			2	1					2		3	34	31	119				48			167	17	9
Tyner	39			1	1				1					37	38	113				45			177		
Versailles	35	3	2		5	3			3	1	1			32	34	30	133	4		52			189	35	
Vevay	11		4		4	3	1	4	1				1	9	11	11	91			47	17		155	4	2
Vincennes																									
Wabash	72	3		1	4	9		9	4		2		11	58	75	75	144		26	165			362	55	24
Walkerton	39			1	1	1		1	3	1	1			38	34	96				48	12		156		12
Washington	24	1			1	17	4	21	1	1	1			44	40	141				99	102		342	44	15
Westport	95	1	6		8	3	1	4	5	2	5			79	91	140				41	43		224	42	37
Wheatland	25		2		2	2		2		2				23	25		144			65	13		222		
Winchester	26	1		2	3	1		1	3					21	24		131			48			179		
Windfall	16								1	1	2				16		120			48			168	12	
Birdseye																	30			30	12		60	6	
Churubusco	14								1					14	6	104				52			156	4	6
South Marion	12									1	1			10	12	12	26			10			11	1	3

PROPERTY STATEMENT

Church	Church Value	Church Debt	Church Equity	Parsonage Value	Parsonage Debt	Parsonage Equity	Total Value	Total Debt	Total Equity
Alexandria	\$ 15000.00	\$	\$ 15000.00	\$ 15000.00	\$ 9000.00	\$ 6000.00	\$ 30000.00	\$ 9000.00	\$ 21000.00
Anderson	4000.00	1800.00	2200.00				4000.00	1800.00	2200.00
Andrews									
Aurora									
Bass Lake	2500.00		2500.00				2500.00		2500.00
Bedford	3000.00	1800.00	1200.00	1500.00		1500.00	4500.00	1800.00	2700.00
Beech Grove									
Bethel									
Bicknell	1500.00		1500.00	2000.00		2000.00	3500.00		3500.00
Boonville	3500.00		3500.00				3500.00		3500.00
Brazil							3500.00		3500.00
Brown's Chapel	4000.00		4000.00	4500.00		4500.00	8500.00		8500.00
Burns City									
Centerville									
Chesterfield									
Clarks Hill									
Clarksburg	2500.00	300.00	2200.00	600.00		600.00	3100.00	300.00	2800.00
Coalmont	200.00		200.00	300.00		300.00	500.00		500.00
College Corner	1500.00		1500.00	2000.00		2000.00	3500.00		3500.00
Concord	1000.00		1000.00	1000.00		1000.00	2000.00		2000.00
Connersville	4000.00	500.00	3500.00	5000.00	4000.00	1000.00	9000.00	4500.00	4500.00
Delphi	2500.00		2500.00	2500.00	529.00	1971.00	5000.00		4471.00
Deputy									
East Columbus									
East Enterprise	2000.00		2000.00	1000.00		1000.00	3000.00		3000.00
Edinburgh									
Elnora	2000.00		2000.00	2000.00		2000.00	4000.00		4000.00
Elwood	3000.00		3000.00	3000.00		3000.00	6000.00		6000.00

PROPERTY STATEMENT

Church	Church Value	Church Debt	Church Equity	Parsonage Value	Parsonage Debt	Parsonage Equity	Total Value	Total Debt	Total Equity
English	15000.00		15000.00	2500.00		2500.00	17500.00		17500.00
Epsom	1500.00		1500.00	1500.00		1500.00			
Evansville, 1st	10000.00		10000.00	6000.00		6000.00	16000.00		16000.00
Evansville, F. H.	4000.00		4000.00	5000.00		5000.00	9000.00		9000.00
Fairmount	2500.00		2500.00	3000.00		3000.00	5500.00		5500.00
Forest	2500.00		2500.00	2000.00		2000.00	4500.00		4500.00
Frankfort, 1st	20000.00		20000.00	5000.00		5000.00	25000.00		25000.00
Frankfort, E. S.	1000.00		1000.00				1000.00		1000.00
Frankton									
French Lick									
Fort Branch									
Fort Wayne									
Fulton	2000.00	4630.00	2000.00	2000.00		2000.00	4000.00		4000.00
Gas City	12000.00		7370.00				12000.00	4630.00	7370.00
Greenfield	3000.00		3000.00				3000.00		3000.00
Greensburg	1700.00		1700.00	3500.00		3500.00	5200.00		5200.00
Greenwood									
Hartsville	1200.00		1200.00	1800.00		1800.00	3000.00		3000.00
Harvey Flats									
Hope									
Howard Chapel									
Huntington	2000.00		2000.00	2000.00		2000.00	4000.00		4000.00
Indpls., 1st	7000.00	1750.00	7000.00	5000.00		5000.00	12000.00		12000.00
Indpls., 2nd	5000.00		5000.00	4000.00		4000.00	9000.00		9000.00
Indpls., Riverside	15000.00		13250.00				15000.00	1750.00	13250.00
Indpls. Northside	6000.00		6000.00	9750.00	4150.00	5600.00	15750.00	4150.00	11600.00
Indpls. Brookside	3000.00		3000.00	6000.00	500.00	5500.00	9000.00	500.00	8500.00
Indpls., Valley V.									

PROPERTY STATEMENT

Church	Church Value	Church Debt	Church Equity	Parsonage Value	Parsonage Debt	Parsonage Equity	Total Value	Total Debt	Total Equity
Indpls., Prospect									
Indpls., Central									
Indpls., Bates									
Indpls., McCarty	3500.00		3500.00				3500.00		3500.00
Indpls., Westside	4250.00	1244.50	3005.00				4250.00	1244.00	3005.00
Jasonville									
Jonesboro	5000.00		5000.00	3000.00		3000.00	8000.00		8000.00
Knightstown									1571.00
Kokomo, Purdum									
Kokomo, N. Side									
Lafayette	7000.00		7000.00	3500.00	1532.00	1968.00	10500.00	1532.00	8968.00
LaGrange	3000.00	300.00	2700.00				3000.00	300.00	2700.00
Lawrence									
Lawrenceburg	5000.00		5000.00	3000.00		3000.00	8000.00		8000.00
Lebanon	8000.00		8000.00	10000.00		10000.00	18000.00	450.00	17350.00
Leisure									
Linton	2000.00		2000.00	2000.00		2000.00	4000.00		4000.00
Logootee	1500.00		1500.00	1500.00		1500.00	3000.00		3000.00
Logansport	8000.00		8000.00	3500.00		3500.00	11500.00		11500.00
Madison							10000.00		10000.00
Marengo									
Marion, 1st	15000.00		15000.00	6000.00		6000.00	16000.00		16000.00
Marion, Grant St.	3500.00		3500.00				3500.00		3500.00
Mecca									
Medora	800.00		800.00				800.00		800.00
Merom									
Michigantown									
Milton									

PROPERTY STATEMENT

Church	Church Value	Church Debt	Church Equity	Parsonage Value	Parsonage Debt	Parsonage Equity	Total Value	Total Debt	Total Equity
Mitchel									
Monon									
Morgantown	2500.00		2500.00	2500.00		2500.00	5000.00		5000.00
Muncie	6500.00		6500.00	7500.00		7500.00	14000.00		14000.00
New Albany									
New Carlisle	8000.00		8000.00	5000.00		5000.00	13000.00		13000.00
New Castle	5000.00		5000.00	2500.00		2500.00	7500.00		7500.00
New Goshen									
Noblesville									
North Vernon	8000.00		8000.00	3000.00		3000.00	11000.00		11000.00
Norway	4000.00		4000.00	4000.00		4000.00	8000.00		8000.00
Nappanee	9122.10	4925.00	4197.00	3000.00		3000.00	12122.00		7197.00
Oaktown	1500.00		1500.00	1000.00	142.00	858.00	2500.00	1420.00	2358.00
Orleans	1500.00		1500.00	4600.00	1460.00	3140.00	6100.00	1460.00	4640.00
Paoli	2000.00		2000.00	3000.00	1350.00	1650.00	5000.00	1350.00	3650.00
Petersburg									
Poplar Grove									
Prairie Creek	2000.00		2000.00				2000.00		2000.00
Richmond, 1st	8000.00		8000.00				8000.00		8000.00
Richmond, E. S.	2000.00		2000.00				2000.00		2000.00
Rising Sun				2500.00		2500.00	2500.00		2500.00
Rodney									
Rushville	3000.00		3000.00	2500.00	1100.00	1400.00	5500.00	1100.00	4400.00
Sanford									
Scott City									
Scottsburg									
Seeleyville									
Seymour	2200.00		2200.00	2300.00		2300.00	4500.00		4500.00
Shelburn									

PROPERTY STATEMENT

Church	Church Value	Church Debt	Church Equity	Parsonage Value	Parsonage Debt	Parsonage Equity	Total Value	Total Debt	Total Equity
Shelbyville	5000.00		5000.00	3500.00		3500.00	8500.00		8500.00
Shoals									
Somerville	4000.00		4000.00	4000.00		4000.00	8000.00		8000.00
South Bend	8500.00		8500.00	6000.00	2500.00	3500.00	14500.00	2500.00	12000.00
Spearsville	1500.00		1500.00				1500.00		1500.00
Sullivan	3000.00		3000.00	2500.00		2500.00	5500.00		5500.00
Swayzee	5000.00	2295.00	2705.00				5000.00	2295.00	2705.00
Sycamore									
Terre H., G'nw'd	2500.00		2500.00	6000.00		6000.00	8500.00		8500.00
Terre H., Hul'n	4500.00		4500.00	4000.00		4000.00	8500.00		8500.00
Terre H., 6th A.	4000.00		4000.00	5000.00	350.00	1500.00	9000.00	350.00	8650.00
Terre H., N. S.									
Terre H., West									
Tipton	7000.00		7000.00	4500.00		4500.00	11500.00		11500.00
Twin Oaks									
Tyner	3000.00		3000.00	2000.00		2000.00	5000.00		5000.00
Versailles	7000.00		7000.00	7000.00	600.00	6400.00	14000.00	600.00	13400.00
Vevay									
Vincennes									
Wabash	3000.00		3000.00	2000.00		2000.00	5000.00		5000.00
Walkerton	4000.00		4000.00	3000.00	110.00	2890.00	7000.00	110.00	6890.00
Washington									
Westport	2000.00		2000.00	2000.00		2000.00	4000.00		4000.00
Wheatland									
Winchester	4000.00		4000.00	2000.00		2000.00	6000.00		6000.00
Windfall	7500.00		7500.00	3500.00	200.00	3300.00	11000.00	200.00	10800.00
Birdseye									
Churubusco	2000.00		2000.00				2000.00		2000.00
South Marion									

YOUNG PEOPLE'S REPORT

Church	No. Meetings Held	No. Members Last Report	Active	Associate	Honorary	Loss	Gain	Average Attendance	Cash Brought Forward	Offerings Received	Total Receipts	Total Expenditures	Cash on Hand	
Alexandria	11		14					16	\$	69.64	\$	28.00	\$	41.64
Anderson	50	30	21	9	25			42	42.60	284.39	326.99	254.08		72.91
Andrews														
Aurora								20.52		104.30	130.16	54.34		75.82
Bass Lake	48	17	12					9	40.76	17.87	58.63	45.99		12.64
Bedford	6		12					15		23.20	23.20	14.20		9.00
Beech Grove														
Bethel														
Bicknell	51	18	18	2	20			45	20.29	13.54	33.83	7.54		26.29
Booneville														
Brazil	49	31	19	12	5			40	5.68	70.00	75.68	69.39		6.29
Brown's Chapel														
Burns City														
Centerville														
Chesterfield														
Clarks Hill														
Clarksburg	50	38	24	4	12			19	24.69	35.50	60.19	41.58		18.61
Coalmont														
College Corner														
Concord	13	15	10					10	4.41	7.73	12.14			12.14
Connersville														
Delphi														
Deputy	45	10	10	20	10			30			2.00			2.00
East Columbus	41	71	27	11	4			27	15.98	65.73	81.71	45.62		36.09
East Enterprise														
Edinburgh														
Elnora														
Elwood	37	40	15	1	24			50	17.57	150.75	168.32	135.10		33.22

YOUNG PEOPLE'S REPORT

Church	No. Meetings Held	No. Members Last Report	Active	Associate	Honorary	Loss	Gain	Average Attendance	Cash Brought Forward	Offerings Received	Total Receipts	Total Expenditures	Cash on Hand
English Epsom	44	33	13		19			43	34.30	194.24	228.54	191.74	36.80
Evansville, 1st	41	45	15	9	13			45	5.56	148.74	231.05	221.82	9.23
Evansville, F. Hills Fairmount	47	51	43	6	8			35	73.80	232.28	306.08	270.81	35.27
Forest Frankfort, 1st	47	27	25		7				2.80	183.28	186.08	176.51	9.57
Frankfort, E. Side													
Frankton													
French Lick									202.33	198.17		400.50	167.29
Fort Branch													
Fort Wayne													
Fulton	47	10	10	4				18	10.21	232.96	243.17	238.93	4.24
Gas City	26		10					15		16.36	16.36	.25	16.11
Greenfield													
Greensburg	48	18						30	12.06	39.55	55.15	35.91	19.24
Greenwood											32.17		32.17
Hartsville													
Harvey Flats													
Hope													
Howard Chapel													
Huntington													
Indpls., 1st									46.06	38.37	84.43	65.50	18.93
Indpls., 2nd	36	16	8	3				25	21.85	17.66	39.55	23.00	16.55
Indpls., Riverside													
Indpls., Northside									34.60	11.82	46.42	2.75	43.67
Indpls., Brookside	44		14	11	9			13	6.00	63.81	69.81	50.00	19.81
Indpls., Valley V.													

YOUNG PEOPLE'S REPORT

Church	No. Meetings Held	No. Members Last Report	Active	Associate	Honorary	Loss	Gain	Average Attendance	Cash Brought Forward	Offerings Received	Total Receipts	Total Expenditures	Cash on Hand
Indpls., Prospect	52	17	17					35	40.03	301.43	341.46	306.30	35.16
Indpls., Central													
Indpls., Bates St.													
Indpls., McCarty													
Indpls., Westside													
Jasonville													
Jonesboro													
Knightstown													
Kokomo, Purdum	51	55	48	7				25	34.08	56.45	90.53	63.58	26.95
Kokomo, N. Side													
Lafayette	52		13	1	4			17		110.48		101.41	9.07
LaGrange													
Lawrence													
Lawrenceburg	49	42	25		17			26	55.63	60.43	116.06	96.00	20.06
Lebanon	31		20	1	8			35	16.54	50.16	162.40	153.01	9.39
Leisure													
Linton	29		10	1	15					8.29	8.29	.83	7.46
Logootee													
Logansport	94	32	34				2	56	10.25	216.02	226.27	190.02	36.25
Madison													
Marengo													
Marion, 1st	51	45	27		14			23	7.91	189.53	197.44	166.89	30.55
Marion, Grant St.	52							25	22.19	17.23	49.86	42.54	7.32
Mecca													
Medora													
Merom													
Michigantown													
Milton													

YOUNG PEOPLE'S REPORT

Church	No. Meetings Held	No. Members Last Report	Active	Associate	Honorary	Loss	Gain	Average Attendance	Cash Brought Forward	Offerings Received	Total Receipts	Total Expenditures	Cash on Hand
Mitchel Monon Morgantown Muncie New Albany	49	32	20	6	14			38	69.69	84.20	153.89	70.83	83.06
New Carlisle New Castle New Goshen Noblesville North Vernon Norway	52	22			22				9.38	133.80	142.68	119.65	23.03
Nappanee Oaktown Orleans Paoli Petersburg Poplar Grove	51	15	10	1	4			33	9.11	15.90	25.01	15.30	9.71
Prairie Creek Richmond, 1st Richmond, E. Side Rising Sun Rodney Rushville													
Sanford Scott City Scottsburg Seeleyville Seymour Shelburn													

YOUNG PEOPLE'S REPORT

Church	No. Meetings Held	No. Members Last Report	Active	Associate	Honorary	Loss	Gain	Average Attendance	Cash Brought Forward	Offerings Received	Total Receipts	Total Expenditures	Cash on Hand
Shelbyville	31		19	2	25			21	15.07	18.59	33.66	7.36	26.30
Shoals													
Somerville													
South Bend	50	42	24	2	20			30	12.47	187.59	200.06	157.68	42.40
Spearsville	50							12	13.63	112.57	126.20	117.56	8.64
Sullivan													
Swayzee													
Sycamore													
Terre H., Greenw'd													
Terre H., Hulman									16.58	260.79	277.37	262.48	14.89
Terre H., 6th Ave.													
Terre H., N. Side													
Terre H., West	50								135.06	48.20	416.17	325.87	90.30
Tipton	36	20	16		6			49	5.75	20.83	26.58	19.00	7.58
Twin Oaks													
Tyner													
Versailles													
Vevay													
Vincennes													
Wabash	23	30	17	4	5			27	17.81	124.83	142.64	115.99	26.65
Walkerton													
Washington													
Westport	42	27	24	3				32	12.08	15.55	27.63	11.60	16.03
Wheatland													
Winchester													
Windfall													
Birdseye													
Churubusco													
South Marion													

UNSTATIONED MINISTERS' REPORT

NAME	No. Sermons Preached	Prayer Services Conducted	No. Revivals in P.H.C.	No. Revivals Elsewhere	Total Revivals	Total Calls	No. Seeking Regeneration	No. Seeking Sanctification	Souls Dealt With In Personal Work	No. Prayed With For Healing	Children Dedicated	Marriages	Funerals	Miles Traveled	Cash	Donations	Gifts	Total Support
R. D. Addington	321		14	5	19	35	711							15,500	\$2,910.42	\$	\$	\$2,910.42
Vern Baldwin	2	1																
Dennis Barber	214						98	304							1,653.00			1,653.00
Edna Barnes	94		2		2	256	64	45		22					150.00			150.00
Retta Baughman	8									1								
Bessie Bennett	1					45												
Helen Bunting	27	6	2		2	193	20	16	12	6								
Stephen Burk	5	4			4	110			50	12								
E. J. Clem	115						22	12		17			3					
Stella Critchfield	109	60			2	45	24			5	24				200.00	25.00		225.00
Darwin Cromer	6	4				20	2		10					365	10.00			10.00
Clemens Dilk	15	6				12	1		3	2								
Hattie Dunkelberger	9	3				45	4			8		1						
Eva Frye	5	3				433			81	76								
Howard Goins	100	12	4	2	6	94	67	17	77	23			1	2,576	530.00			530.00
Lee Goins	35	10				515	8			161			2					
Melvin Grove	86				1	20	5	1	3	5					344.00	150.00	40.00	534.00
Elmer Grossman	7					52	3			19					10.00			10.00
Grace Hamilton	5																	
Helen Hammer	16			1	1	76	13			8					395.00			395.00
Alice Hart	6																	
Jesse Hayhurst	77		4		4	33	12			6			1	800	400.55			
Anna Hines	8				1	12	5	2		13				65				
Estella Henderson	3					5			25									
Velma Hertel	204				13	55	182	86		22				8,220	1,221.49			1,221.49
Albert Holcomb	4												1	275	20.00			20.00
Della Hotle	12	6				35			25	4								
Pearly Jacobs	5	1				343	9	3		11				2,000				
Katherine Inman		1				48			3	7								
Garnett Jewell	45		1	2	3	48	15	12		19		4	6		330.00			330.00
Jennie Kable	2	4				28												

UNSTATIONED MINISTERS REPORT

NAME	No. Sermons Preached	Prayer Services Conducted	No. Revivals in P.H.C.	No. Revivals Elsewhere	Total Revivals	Total Calls	No. Seeking Regeneration	No. Seeking Sanctification	Souls Dealt With In Personal Work	No. Prayed With For Healing	Children Dedicated	Marriages	Funerals	Miles Traveled	Cash	Donations	Gifts	Total Support
Lee Kearby	55		3		3		14	15						320	339.05			339.05
Cecil Kline	67	47				38	29			3					370.55	69.50		440.00
Orville Mann	25	5	1	4	5		20	5		4				600	200.00	10.00	10.00	220.00
Robert Martin	20					50												
Wilbert McCrory	12		1		1	14								140				
Samuel Moore	2									2		1						
Lillie E. Moore	2																	
Wilbur Moore	10													187	16.00			16.00
Boone Murphy	8					24	1	3						100	31.00			
Jesse Parks	4																	
Ruby Parr		14				25												
C. E. Posey	280		17		17	25	249	123		40	4			11,431	2,171.60			2,170.60
L. F. Rahrar		2				873	1		25	14		1	4		23.50			23.50
Robert Rogers	8	4					3			1								
Dorsey Schenk	56		3		3	9	75	23		12	1	2			663.00			663.00
H. A. Shepperd	16					8			1	3				290	32.00			32.00
Irene Steger	301		8	6	14		372	141		25	2	1	1		2,375.00			2,375.00
Lawrence Wade	310				18		458							20,000	2,577.05	170.55	187.39	2,934.99
Roscoe Wagoner	15					10	7							100	7.00			7.00
Elza and Pearl Walker	47	13				124	17	5		20					206.00	91.00		297.00
Glenn Warren	24	6				42	1		50						27.50			27.50
Edmund Wells	24				1		4					1			25.00			25.00
Walter Wells	12	2					2			3		1		816	31.00			31.00
Ray Williams	310		9	11	20	90	211	77		6				11,000	2,540.00			2,540.00
Mamie Yaryan	19					15								22,020	126.00			126.00
R. W. Wolfe	388		22		22	200	300	125		50	1	1		12,000	3,182.00			3,182.00
R. G. Flexon	266		11	2	13					2				55,000	300.00			300.00
A. M. Ewing	40		2															
Jack Donovan	187		8	7	15	28				56		1		6,102	1,608.81			1,608.81
Katie Locke and Esther White	45		3			173	47			62			2					
John Higgenbotham	157		2	2	4	50	22	21		15			1	400	600.00			600.00

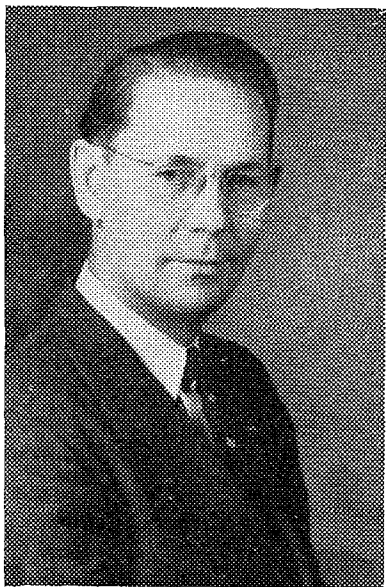
EVANGELISTS SINGERS REPORT

NAME	Special Songs Sung	Week-End Services	Sunday Services	Revivals In P.H.C.	Revivals Elsewhere	Total Revivals	Total Seekers	Homes Prayed In	Prayed With For Healing	Children's Meetings	Miles Traveled	Cash
Viola Borders	325			5	3	8	90	25	15	75	1,200	\$ 450.00
Mildred and Violet Mae Hamilton	731			17	1	18	697			71	7,489	2,196.00
Mr. and Mrs. Max Hamilton	1728	3		28	5	33	1944			71	20,077	3,465.59
Helen Huegel	238			5	2	7	72	4		18	3,137	320.95
Florabelle and Athel McCombs	800	4		14	3	17		100		15	19,360	
Fern McHenry	512			11	4	15	200	25			4,985	638.67
Barbara Miller	512			11	4	15	200	25			4,985	638.67
Robert McClemore	275	30								6	7,500	
Bettylou Morris	237			5	2	7	73	1		18	2,899	320.95
Ada Marie Waddell	600			16	1	17	676				6,105	1,440.00
Mark Waddell	300			9		9	611				2,375	823.00

ORDAINED DEACONESS REPORT

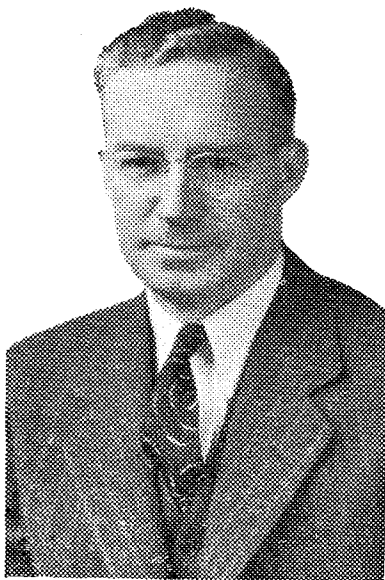
	Prayer Services	Young Peoples' Services	Garments Distributed	Total Calls	Benevolence
Miss Clyde Titus	3	2	228	1218	\$163.76

FRANKFORT PILGRIM COLLEGE



REV. R. K. STOREY
PRESIDENT

The school where you may
send your children for a
guarded Christian
education.



REV. K. W. PHIPPS
DEAN OF COLLEGE



REV. F. B. DUNN
HIGH SCHOOL PRINCIPAL

COURSES OFFERED

Bachelor of Theology
Three Year Ministerial
Christian Workers
Junior College
Accredited High School

DISCOUNTS

A discount of ten per cent on tuition and room is granted all active ordained ministers, or those holding district license, and those wholly dependent on them for support.

CONFERENCE COUNCIL



F. J. GOINS
Supt. Northern District



R. E. NIBARGER
Supt. Central District



M. H. SNYDER
Supt. Southern District



G. W. NOEL
Asst. Supt. Northern District



T. J. PREUSZ
Asst. Supt. Central District



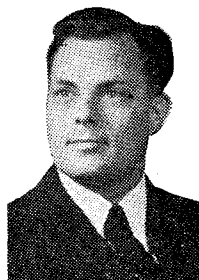
MARK STOREY
Asst. Supt. Southern District



CARL R. REED
Conference Secretary



E. V. HALT
Conference Treasurer



JAMES HERIEL



VIRGIL CAMP



ERNEST CARROLL

(Members not shown: C. D. Jester, Area Montgomery).

PASTORS AND EVANGELISTS



Robert and Louis Addington



G. R. Bateman



Walter Best



Lindley and Beulah Arnett



Clayburn and Beulah Andrews



J. Edgar Billman



O. W. and Edna Barnes



Murry Boothe



Brose Bond



Bonnie Bradfield



Ray Burress



Elton Call



Milford and Juanita Burcham



Hascue Carter



Floyd Clark



Barber Evangelistic Party



E. J. Clem



Willis Clock



Lonnie Cole



Stella Critchfield



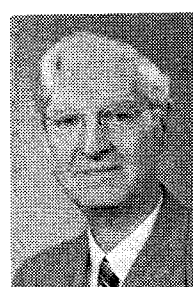
E. E. Crowder



Beulah Day



Walter Daugherty



Jack Donovan



O. D. Emery



A. M. Ewing



Oscar Felsburg



W. A. and Eva Frye



Earl Fuller



Leonard Fletcher



Howard Goins



Lee Goins



Floyd Gookins



Robert Hardin



Clarence and Grace Hamilton



Wilbur Hartley



Aaron Haynurst



Velma Hertel



Hershel Hughes



Nannie Hunter



George Huff



Wayne Isaacs



Clarence Jackson



Paul and Leah Isgrigg



Angus Jeffers



Marvin Jewell



Virgil Kelley



Walter Keeney



Eula Kennedy



J. E. Kerby



Clarence Klopfenstein



Lee Lashbrook



Fay Locke



Gerald Leavell



Clarence May



Lester Mayhew



Robert Malone



Ray Martin



C. W. McHenry



Ralph McCrory



William and Imogene McFarlin



Loyd Montgomery



C. M. Morrison



Clyde Moreillon



John Mosier



Guy Mowery



George Neal



W. H. Pratt



R. D. Perry



Gilbert Pegg



George Phares



E. A. and Elsie Poe



Wilbur Pottenger



James Pursley



Wilkes Ragsdale



Carl Roark



Velma Sarles



Dorsey Schenck



Bertha Schoeff



Nettie Sheckels



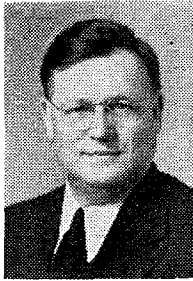
Naomi Shumaker



Lester and Edith Smith



Grant Speer



Ray Smith



Walter Speck



O. W. Spencer



Irene Steger



Robert Stunkel



Noel D. Taylor



Joseph T. Thomas



Don E. Tousley



Edith Trotzke



Defoe and Blanch Vampner



Moreland Yundt



Lawrence and Mrs. Wade



L. L. Waddell



E. R. Weekley



Edward and Alice Waldron



C. I. Wilson



O. D. Williams



Roy E. Wilson



Ermal and Madgel Wilson



Cleona Wright



Ray and Dorothy Williams



Emory Wood



E. W. Wright

EVANGELISTIC SINGERS



Viola Borders



Lois Cleaver and Pansey Ficklin



Walter Goins



Max Hamilton



Paul Hamilton



Mildred and Mae Hamilton



Fern McHenry and Barbara Miller



Athol and Florabelle McCombs



Betty Morris and Helen Heugel



Ada Marie Waddell

CAMP MEETING 1949

August 12-21, 1949

CONFERENCE

Beginning August 22, 1949

MINISTERIAL CONVENTION

April 12-13-14, 1949

FIRST PILGRIM HOLINESS CHURCH

Frankfort, Indiana