

Room 204 Shelf
Please Return

Kansas District
**PILGRIM HOLINESS
CHURCH**



**THIRTY-EIGHTH
ANNUAL CONFERENCE
1951**

CONFERENCE HELD AT HUTCHINSON, KANSAS
AUGUST 6, 1951

710 2-1
150-2

THIRTY-EIGHTH /
ANNUAL CONFERENCE

of the

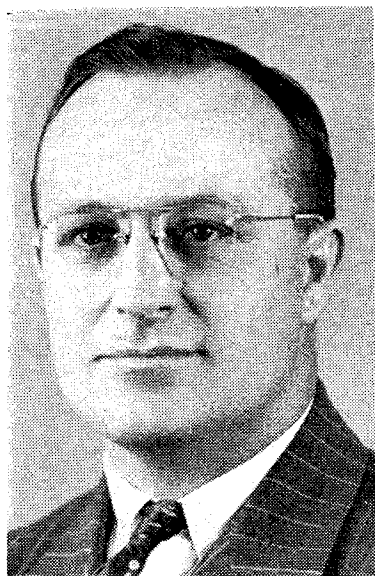
Kansas District

Pilgrim Holiness Church

Conference Held at
Hutchinson, Kansas
August 6, 1951

PRINTED IN U.S.A.

PRINTED BY THE GARDEN CITY DAILY TELEGRAM, GARDEN CITY, KANSAS



REV. ABRAHAM I. WISE
District Superintendent

TABLE OF CONTENTS

| | |
|--|----|
| District Officers | 4 |
| Churches and their Pastors | 5 |
| Ministerial Directory | 6 |
| Churches and their Delegates | 7 |
| Journal of Proceedings | 8 |
| District Superintendent's Report | 10 |
| Treasurer's Report | 12 |
| Committee Reports | |
| Resolutions | 16 |
| Sunday School and Youth | 16 |
| Camp and Conference | 17 |
| Educational | 17 |
| District Work | 18 |
| Special Resolutions | 18 |
| District Sunday School | 19 |
| Foreign Missionary | 19 |
| Statistical Reports | |
| Deaconess | 20 |
| Evangelists and Unstationed Ministers' | 21 |
| Sunday School Statistical | 22 |
| Local Church Statistical | 23 |
| Pastor's | 24 |
| Church Treasurer's | 25 |
| Sunday School Financial | 28 |
| Young People's Society | 29 |
| Summary of Totals by Departments | 30 |
| Property Statement | 31 |

DISTRICT OFFICERS

SUPERINTENDENT

Rev. Abraham I. Wise, Tele. 2653R933 E. 6th, Hutchinson, Kansas

ASSISTANT SUPERINTENDENT

Rev. Ray L. Jellison, Tele. 90Johnson, Kansas

SECRETARY

Rev. J. H. Fortner, Tele. 102825 W. 4th, Colby, Kansas

TREASURER

Rev. M. L. Pottenger, Tele. 181307 E. Main, Lincoln, Kansas

OTHER MEMBERS OF THE COUNCIL

Rev. H. K. Busby, Tele. 7Lamont, Kansas

Rev. Wayne R. Plummer, Tele. 5150 ..217 E. 10th St., Goodland, Kansas

Rev. B. F. Ireland, Tele. 62681107 E. 5th, Hutchinson, Kansas

BIBLE SCHOOL BOARD MEMBER

Rev. Wayne R. PlummerGoodland, Kansas

EDUCATIONAL BOARD MEMBERS

Rev. J. H. Fortner—1950-1953Colby, Kansas

Rev. Herschel Hughes—1950-1953Fredonia, Kansas

Rev. E. W. Burton—1951—1954Fredonia, Kansas

Rev. Henry B. Jones—1951-1952Sabetha, Kansas

EXAMINING BOARD

Rev. H. K. Busby—1951-1954Lamont, Kansas

Rev. Harold Bland—1950-1953Fall River, Kansas

Rev. B. F. Durham—1949-1952Lucas, Kansas

DISTRICT TRUSTEES

Rev. F. N. Griffin—1951-1954Garden City, Kansas

Rev. J. J. Cork—1950-1953Colby, Kansas

Mr. Clarence Berggren—1949-1952Oakley, Kansas

DISTRICT YOUNG PEOPLE'S OFFICERS

Rev. H. Hughes—Executive SecretaryFredonia, Kansas

Rev. Lorren Elliot—TreasurerBird City, Kansas

DISTRICT SUNDAY SCHOOL BOARD

Rev. Charles Colaw—ChairmanSharon Springs, Kansas

Rev. Wayne R. PlummerGoodland, Kansas

Rev. J. H. FortnerColby, Kansas

COMMITTEES FOR 1952

Reception—B. F. Durham, John Keller

Auditing—Mrs. F. N. Griffin, Mrs. Herschel Hughes

Foreign Missions—Rev. H. L. Solter, Rev. F. N. Griffin, Rev. J. E. Isgrigg, Rev. Ralph Armstrong

Ways and Means—Rev. H. K. Busby, Rev. H. L. Bland, Rev. Claude Overholt, Rev. Roy Glendening

Resolutions—Rev. E. W. Burton, Rev. B. F. Ireland, Rev. O. R. Hofen, Rev. Alvin Reissig

Statistical—Rev. J. H. Fortner, Mr. A. L. Kearney, Rev. Henry B. Jones

Memoirs—Mrs. O. R. Hofen, Mrs. H. L. Solter

CHURCHES AND THEIR PASTORS

| | |
|--|--------------------------|
| Argonia—Tele. 68 | Rev. O. R. Hofen |
| Big Bow—53R15, Johnson Exchange | Rev. H. L. Solter |
| Bird City—145J | Rev. Lorren Elliott |
| Brewster—65J | Rev. Ralph Armstrong |
| Colby—Tele. 102 | Rev. J. H. Fortner |
| Fall River—Tele. 38 | Rev. H. L. Bland |
| Fowler—Tele. 22 | Rev. Dean Wade |
| Fredonia—Tele. 709, 902 N. 7th | Rev. Herschel Hughes |
| Garden City—Tele. 3892, 1409 A St. | Rev. F. N. Griffin |
| Goodland—Tele. 5150, 217 E. 10th St. | Rev. W. R. Plummer |
| Humboldt—Tele. 691W | Rev. Wilbur Eichelberger |
| Hutchinson—Tele. 6268, 1107 E. 5th | Rev. B. F. Ireland |
| Johnson—Tele. 90 | Rev. Ray Jellison |
| Kansas City—Tele. Atwater 6837, 4030 Georgia | Rev. H. C. Freetag |
| Lamont—Tele. 21 | Rev. H. K. Busby |
| Lincoln—Tele. 181, 307 E. Main | Rev. M. L. Pottenger |
| Lyndon—Tele. 262 | Rev. H. H. Lyder |
| Natoma—Tele. 17 | Rev. J. V. Hickman |
| Oakley—Tele. 281 | Rev. Geo. W. Farr |
| Osawatomie—Tele. 869, 401 Parker St. | Rev. Alvin Reissig |
| Sabetha—Tele. 79M, 605 Oregon | Rev. Henry B. Jones |
| Scott City—Tele. 373 | Rev. Elmer Jantz |
| Sharon Springs—Tele. 238 | Rev. Chas. Colaw, Jr. |
| St. Francis—Tele. 293 | Rev. A. E. Whittington |
| Syracuse—Tele. 322 | Rev. F. M. Eichelberger |
| Toronto | Rev. Claude Overholt |
| Wichita—Tele. 79822, 1104 W. 2nd | Rev. Roy Glendenning |
| Winona—Tele. 71 | Rev. J. E. Isgrigg |
| Woodlawn | Rev. John Keller |

UNORGANIZED CHURCHES

| | |
|---|-------------------|
| Keystone | Rev. Fred Patton |
| Wichita People's Mission—1221 Ida | Rev. J. John Doll |

MINISTERIAL DIRECTORY

ORDAINED MINISTERS

| | |
|----------------------------|---|
| 1938—Armstrong, Ralph | Brewster, Kansas |
| 1923—Berkgren, Mrs. Velma | Oakley, Kansas |
| 1939—Bland, Harold L. | Fall River, Kansas |
| 1948—Bland, Mrs. Harold L. | Fall River, Kansas |
| 1944—Bogart, Donald | 1010 W. 6th Ave., Denver, Colorado |
| 1936—Burton, E. W. | Box 189, Fredonia, Kansas |
| 1930—Busby, Howard K. | Tele. 7, Lamont, Kansas |
| 1947—Clark, A. H. | R.R. 4, Lawrence, Kansas |
| 1944—Carroll, Granville | 712 N. Cooper, Colorado Springs, Colorado |
| 1923—Conrad, M. M. | 3333 Farmington Road, Hutchinson, Kansas |
| 1942—Conrad, Mrs. M. M. | 3333 Farmington Road, Hutchinson, Kansas |
| 1916—Cork, J. J. | Colby, Kansas |
| 1919—Cork, Mrs. J. J. | Colby, Kansas |
| 1936—Craik, Mrs. J. D. | Oakley, Kansas |
| 1921—Cummins, A. P. | Boyer, Colorado |
| 1926—Doll, J. John | 1221 Ida, Wichita, Kansas |
| 1940—Doll, Mrs. Flossie | 1221 Ida, Wichita, Kansas |
| 1944—Doane, Joye | 540 W. Monument, Colorado Springs, Colorado |
| 1932—Duncan, A. F. | |
| 1932—Duncan, Mrs. A. F. | |
| 1932—Durham, B. F. | Lucas, Kansas |
| 1950—Farr, George | Oakley, Kansas |
| 1908—Freetag, H. C. | 4030 Georgia Ave., Kansas City, Kansas |
| 1945—Eichelberger, F. M. | Syracuse, Kansas |
| 1950—Elliott, Lorren D. | Bird City, Kansas |
| 1926—Fortner, J. H. | Colby, Kansas |
| 1948—Gillum, S. A. | Frankfort, Indiana |
| 1929—Glendening, Roy | Wichita, Kansas |
| 1942—Griffin, F. N. | Garden City, Kansas |
| 1942—Griffin, Mrs. F. N. | Garden City, Kansas |
| 1920—Hamilton, Mrs. Anna | Argonia, Kansas |
| 1929—Hill, Marion | Sharon Springs, Kansas |
| 1948—Hobbs, Francis | Lincoln, Kansas |
| 1949—Hofen, O. R. | Argonia, Kansas |
| 1949—Hofen, Mrs. O. R. | Argonia, Kansas |
| 1942—Hughes, Herschel | Fredonia, Kansas |
| 1925—Hulse, Aaron | Wichita, Kansas |
| 1939—Ireland, B. F. | Hutchinson, Kansas |
| 1942—Isgrigg, J. E. | Winona, Kansas |
| 1950—Jantz, Elmer | Scott City, Kansas |
| 1935—Jellison, Ray L. | Johnson, Kansas |
| 1950—Jones, Henry B. | Sabetha, Kansas |
| 1924—Keller, J. Orvan | Logan, Kansas |
| 1930—Koehler, Mrs. Carrie | McDonald, Kansas |
| 1944—Lyder, H. H. | Lyndon, Kansas |
| 1951—Overholt, Claude | Toronto, Kansas |
| 1930—Philpot, J. H. | 126 N. 13th, Fredonia, Kansas |
| 1935—Plummer, Wayne R. | Goodland, Kansas |
| 1940—Pottenger, M. L. | Lincoln, Kansas |
| 1944—Reissig, Alvin | Osawatimie, Kansas |
| 1944—Sickler, Paul | Saguache, Kansas |
| 1934—Snook, E. R. | Junction City, Colorado |
| 1918—Solter, H. L. | Big Bow, Kansas |
| 1922—Solter, Mrs. H. L. | Big Bow, Kansas |
| 1928—Taylor, B. J. | Winona, Kansas |

1927—Upshaw, L. F.Fredonia, Kansas
1950—Wade, H. DeanFowler, Kansas
1937—Wise, Abraham I.Hutchinson, Kansas
1950—Whittington, Auburn E.St. Francis, Kansas
1940—Wylie, Andrew R. R.R. 1, Humboldt, Kansas

ORDAINED DEACONESES

1950—Carroll, Mrs. Elverda ..712 N. Cooper, Colorado Springs, Colorado
1948—Durham, Mrs. B. F.Lucas, Colorado
1944—Fletcher, RubyIndia
1951—Overholt, DorisToronto, Kansas

LICENSED MINISTERS

Colaw, Chas. Jr.Sharon Springs, Kansas
Eichelberger, WilburHumboldt, Kansas
Gualtney, OrvalLakin, Kansas
Hogarth, Mrs. RuthColorado Springs, Colorado
Keller, JohnWoodlawn, Kansas
Long, RichardColorado Springs, Colorado
Long, Mrs. RichardColorado Springs, Colorado
Lyder, Mrs. H. H.Lyndon, Kansas
McNall, Paul1461 Wesley, Pasadena 7, California
Randall, J. T.540 W. Monument St., Colorado Springs, Colorado
Welch, FrankFall River, Kansas

LICENSED DEACONESES

Martsof, AlmedaSabetha, Kansas
Keller, Mrs. J. O.Logan, Kansas
Sager, Mrs. IsabelleScott City, Kansas

CHURCHES AND THEIR DELEGATES

| | | | |
|------------------|-----------------------|----------------------|---------------------|
| Argonia | Mrs. Jess Hamilton | Lyndon | Mrs. Elmer Jantz |
| Big Bow | Roger Jones | Natoma | Mrs. Rosa Clark |
| Brewster | Clarice Berry | Osawatomie | Ivan Elkinton |
| Colby | Alice Cork | Oakley | Clarence Berkgren |
| Fall River | Mrs. Frank Bogart | Sabetha | Dr. Owen Kimmel |
| Fowler | Mrs. E. W. Frazier | Scott City | Mrs. Isabelle Sager |
| Fredonia | Bliss Doane | Sharon Springs | Frank Slaven |
| Garden City | Mrs. B. F. Ireland | St. Francis | Oscar Whittenberg |
| Goodland | Raymond Frank | Syracuse | Chester Mueller |
| Humboldt | Esther York | Toronto | Mrs. C. A. Overholt |
| Hutchinson | Mrs. Amos Jantz | Wichita | Viola Lockhart |
| Johnson | Mrs. Edgar Carrithers | Winona | Mrs. J. E. Isgrigg |
| Lamont | Mrs. H. K. Busby | Woodlawn | Mrs. Edna Keller |
| Lincoln | Mr. Carl Dillon | | |

JOURNAL OF PROCEEDINGS

The Thirty-eighth Annual Conference of the Kansas District of Pilgrim Holiness Church convened Monday, August Sixth, Nineteen Fifty-one at the Camp Meeting Tabernacle at Hutchinson, Kansas.

FIRST SITTING

The Conference opened with Rev. B. F. Ireland, pastor of Garden City Church, leading a very good song service. Rev. Floyd Eichelberger, pastor of Oakley Pilgrim Holiness Church, led the Conference in a gracious season of prayer.

Rev. Wayne R. Plummer, District Superintendent, introduced to the Conference the second assistant General Superintendent, Rev. A. H. Wilson. Brother Wilson then addressed the Conference from the second chapter of the Acts of the Apostles. He emphasized the necessity of continuing steadfastly in the faith. He stirred our hearts to be faithful to our trust and to keep the sacraments and ordinances instituted of God.

The roll call was read and revised.

It was moved and seconded that Mrs. Elmer Jantz be seated in the Conference bar as delegate from the Lyndon Church. (Carried)

It was moved and duly seconded that Mrs. J. E. Isgrigg be seated as delegate from the Winona Church. (Carried)

A motion prevailed that Mrs. Jess Hamilton be seated as an Ordained Minister. (Carried)

A motion was made and seconded that the three center sections back to the large posts, and the platform constitute the Conference Bar. (Carried)

It was moved and seconded that the Examining Board, the Ways and Means Committee and District Superintendent's report be read, after which the election of officers became the order of the day. (Carried)

The Examining Board's report was read and each minister was voted upon by separate action, which is as follows:

J. T. Randall to be ordained a minister.

Claude Overholt to be ordained a minister.

Mrs. Claude Overholt to be ordained a deaconess.

Richard Long to be granted a third year minister's license.

Mrs. Ruby Long to be granted third year minister's license.

Paul McNall to be granted third year minister's license.

Charles Colaw, Jr. to be granted second year minister's license.

John Keller to be granted first year minister's license.

Wilbur Eichelberger to be granted first year minister's license.

Orval Gwaltney to be granted first year minister's license.

Frank Welch to be granted first year minister's license.

Mrs. H. H. Lyder to be granted first year minister's license.

Mrs. Ruth Hogarth to be granted first year minister's license.

Mrs. J. Orvan Keller to be granted second year deaconess license.

Miss Almeda Martsof to be granted second year deaconess license.

Mrs. Isabelle Sager to be granted second year deaconess license.

The Reception Committee introduced to the Conference the following: Rev. C. C. McNall, Rev. John Keller, Rev. Wilbur Eichelberger, and Orval Gwaltney. Each gave his testimony and they were granted honorary seats in the Conference Bar.

The report of the Ways and Means Committee was read and accepted by the Conference.

The district superintendent read a splendid report of his labors; this report was accepted as read.

ELECTION OF OFFICERS BECAME THE ORDER OF THE DAY

| | |
|---------------------------------------|-----------------|
| District Superintendent | Abraham I. Wise |
| Assistant Superintendent | Ray L. Jellison |
| District Secretary | J. H. Fortner |
| District Treasurer | M. L. Pottenger |
| Advisory Members of the Council | Wayne Plummer |
| | H. K. Busby |
| | B. F. Ireland |

It was moved and seconded that Conference continue until 12 noon. recess for dinner, convene at 1:30 p. m., continue to 5:30 p. m., recess for supper; convene again at 7:00 p. m. and continue until all business is complete. (Carried)

Rev. John Wilson, assistant superintendent of the Oklahoma District, and Rev. Payne of the Wesleyan Methodist Church were introduced to the Conference and were given honorary seats in the Conference Bar.

The Auditing Committee reported and it was moved and seconded that their report be accepted. (Carried)

The District Treasurer read his report and it was accepted by the Conference.

A motion was then entertained and duly seconded that Conference recess for dinner. (Carried)

SECOND SITTING

Conference convened again at 1:30 p. m. with Rev. Henry B. Jones, pastor of Sabetha Church, leading the Conference in song. Prayer was offered by Rev. Bert Durham.

ELECTION OF OFFICERS REMAINED THE ORDER OF THE DAY

Rev. H. K. Busby was elected to the Examining Board. It was moved and seconded that the candidate receiving the most votes would serve the long term on the Educational Board and the one receiving the less votes would serve the short term on the Board. (Carried)

It was moved and seconded that the Resolution Committee report on some new resolutions that might affect the Educational Board.

The Resolutions Committee read their resolution with regard to all ministerial brethren taking study courses offered by our own Church schools by correspondence.

It was moved and seconded that above resolution be referred back to the Resolutions Committee for further study. (Carried)

The Resolutions Committee reported again and the report was accepted by the Conference with the exception of Resolution No. 1 under Examining Committee; by action of the Conference it was tabled.

Reverend E. W. Burton was elected to serve the long term on the Educational Board and Henry B. Jones the short term.

The Statistical Committee read their report. It was accepted by the Conference.

The Missionary Committee read their report. It was moved and seconded that their report be received item by item. They were all accepted with the exception of number three which was moved and duly seconded that it remain as of last year. (Carried)

The Sunday School Committee read a splendid report which was accepted by the Conference.

Reverend Charles Colaw and his Sunday School Superintendent received a certificate of award for the greatest percentage gain in Sunday School attendance last year.

It was moved and seconded that Conference recess for fifteen minutes and then return for the ordination service.

THIRD SITTING

A gracious ordination service was conducted as follows: The song service was led by Rev. A. I. Wise. Rev. Ray Jellison led in prayer. Rev. W. R. Plummer, Rev. H. K. Busby and Rev. J. H. Fortner read the scripture lesson. Second Assistant General Superintendent, Rev. A. H. Wilson, delivered the ordination address, exhorting the candidates and all ministers to be a pattern to the believers in word, in deportment and in divine love.

God blessed as Rev. Claude Overholt was ordained to the ministry and his wife Mrs. Doris Overholt was ordained as a deaconess.

It was moved and seconded that the district council take care of all unfinished business. (Carried)

Minutes of the first sitting were read and accepted as corrected.

DISTRICT SUPERINTENDENT'S REPORT

To our beloved Assistant General Superintendent, Rev. A. H. Wilson, and to the 38th Annual Conference of the Kansas District of the Pilgrim Holiness Church, now in session, grace be unto you, and peace, from God our Father, and from the Lord Jesus Christ, who hath blessed us with all spiritual blessings in heavenly places in Christ; according as He hath chosen us in Him before the foundation of the world, that we should be holy and without blame before Him in love.

Once again in the good providence of God we have been permitted to gather together for our annual camp meeting and conference. We thank God for His watchful care over each of our lives and for the good spirit that prevails over the district.

There has been some change and improvement in church property. Our folk at Wichita outgrew their church, so they sold it and bought larger quarters at a very fine location at Second and Seneca. They now have much better facilities for Sunday School. Also the parsonage is a great improvement over their old one. The Lamont folk suffered the loss of their church by fire, but they rallied to the cause and purchased a school house which they have moved into town on their own land. (This school house is so constructed that it will make them an excellent place of worship.). They also tore down an old barn and built a nice two-car garage. Sabetha has put a new ceiling in part of their church, and purchased a new piano. Bird City has completed the basement floor under the parsonage and built a fine entrance room to the basement. St. Francis has new Venetian blinds in their church which are very attractive and useful. Brewster has two new Sunday School rooms in their basement and all nicely redecorated. Fredonia did some fine remodeling on their parsonage. Argonia has installed rest rooms in the basement of the church. A new house trailer was purchased for our Home Missionary work.

Last fall our portable tabernacle was put up at Lakin. Rev. and Mrs. Conrad moved into the trailer and started working. They did an excellent work. Two revivals were held in the tabernacle. Some souls were definitely saved and some sanctified. The Sunday School reached the forties. When school was out the Conrads, being in not very good health, felt they should quit. We were very fortunate in securing Rev. and Mrs. O. J. Gwaltney to take immediate charge of the work. They fitted into the situation splendidly. The district council voted to build. A 28 x 40 basement has already been built of cement blocks. The cement

floor has been run. After conference it is our hope to complete the building. The upper part will be used for worship, the basement for the present as a parsonage. We would like to see the tabernacle rebuilt and set up in Salina or some other good city.

God has blessed the district with revivals. Some of our Sunday Schools show a loss, but others show a gain. We feel that the interest in Sunday School work has increased throughout the district. Laymen visitation has increased. God gave us a very good Ministerial Convention.

We preached at the opening convention of the Colorado Springs Bible College, and attended the Superintendent's meeting in Indianapolis, and a Bible School board meeting at Colorado Springs, visited most of our churches three times, held all the annual meetings except Sylvan Grove where I cancelled two engagements on account of high water, attended three Sunday School conventions, held one week-end convention, two revivals, one week of a third revival, held three council meetings, one ministerial convention, and helped in a mortgage burning ceremony at Sharon Springs. Their fine property is now free of debt. We preached 112 times, traveled 18,480 miles in district work, 2700 miles for Bible School, besides many other miles in the interest of the Kingdom. My salary is paid in full. I received \$287.68 in revival work and \$394.21 in love offerings from the churches.

I sincerely appreciate the help of my assistant, the very fine spirit and co-operation of the district council, of my ministerial brethren, and of all the laity. We are very thankful for the members of the Pilgrim Holiness Church in the Kansas District, and for the good spirit that prevails among God's saints. Indeed there have been heartaches and burdens but God has given grace. As we come to the close of our second and our last year as your superintendent, we want to thank you from the deep of our heart for your many acts of kindness, your love and forbearance. May God's smile continue to rest upon the Pilgrims of the Kansas District is our prayer.

Respectfully submitted,
Wayne R. Plummer, Dist. Supt.

TREASURER'S REPORT FOR JULY 18, 1950 TO JULY 18, 1951

We, the Auditing Committee of 1951 have examined the District Treasurer's books and believe them to be correct.

Mrs. F. N. Griffin
Mrs. H. A. Hughes

DISTRICT BUDGET

| | |
|--|-------------------|
| Balance on hand July 18, 1950..... | \$ 917.33 |
| Received from ministerial tithes..... | 3,619.94 |
| Received from Churches on District Budget..... | 1,229.02 |
| Received from Churches for District Parsonage | 1,264.00 |
| Received from sale of District property..... | 40.00 |
| Received from Churches for Sunday School Bulletin..... | 25.90 |
| Received from insurance adjustments..... | 245.00 |
| Received for Ministerial Convention..... | 206.91 |
| Received love offering for W. R. Plummer..... | 7.52 |
| Total receipts | \$7,555.62 |

Disbursements:

| | |
|--|-------------------|
| W. R. Plummer salary | \$2,400.00 |
| A. I. Wise salary..... | 50.00 |
| B. F. Ireland salary | 75.00 |
| W. R. Plummer expense account..... | 831.90 |
| Expense account District workers | 52.47 |
| Love offering for superintendent | 7.52 |
| Insurance | 254.85 |
| Printing, postage, report blanks, toll calls, utilities, District minutes, etc. | 729.65 |
| Conference payment on pensions | 433.00 |
| Building material for District parsonage | 757.78 |
| Ministerial convention expense | 217.40 |
| Interest and payment on loans | 954.75 |
| Taxes | 176.02 |
| Flowers | 27.70 |
| Henry Jones for Sunday School bulletins | 20.36 |
| Total expenses | \$6,988.40 |
| Balance on hand July 18, 1951 | 567.22 |

DISTRICT HOME MISSIONS

| | |
|---|-------------------|
| Balance on hand July 18, 1950 | \$1,036.84 |
| Received from Churches and Sunday Schools | 3,324.69 |
| Received and designated for Garden City | 80.00 |
| Received and designated for Lakin | 473.21 |
| Received on loan | 1,500.00 |
| Received from sale of Convention papers | 19.11 |
| Cash from Camp 1950 | 272.82 |
| Gift from Ralph Edson | 50.00 |
| Gift from S. M. Bell: Cash | 25.00 |
| Reimbursed for stove for trailer..... | 48.00 |
| Total receipts | \$6,829.67 |

Disbursements:

| | |
|---|-------------------|
| Salary for workers | \$1,735.52 |
| Building expenses, purchase of lots, rent and utilities for Lakin.. | 2,756.87 |
| Purchase of trailer house | 1,420.00 |
| Paid to Garden City Church | 80.00 |
| Other expenses, meals for workers, tel. calls, mileage for workers | 242.88 |
| Total expenses | \$6,235.27 |
| Balance on hand July 18, 1951 | 594.40 |

CAMP MEETING

| | |
|---------------------------------------|------------|
| Balance on hand July 18, 1950 | \$ 127.90 |
| Received for Camp offering 1950 | 2,044.97 |
| Received from Registration | 1,059.96 |
| Received from Churches | 254.00 |
| Total receipts | \$3,486.83 |

Disbursements:

| | |
|--|------------|
| Camp expenses, workers, rent of equipment and supplies | \$3,089.77 |
| Purchase of equipment and repairs | 116.66 |
| Utilities | 79.46 |
| Taxes | 155.52 |
| Total expenses | \$3,441.41 |
| Balance on hand July 18, 1951 | 45.42 |

GENERAL CONFERENCE

| | |
|---|----------|
| Received and on account from Churches | \$ 74.46 |
|---|----------|

GENERAL HOME MISSIONS

| | |
|--|----------|
| Received from Churches and Camp and paid to Gen. Treas. | 1,421.98 |
|--|----------|

GENERAL ADMINISTRATION

| | |
|---|-----------|
| Received from Churches and paid to Gen. Treas. | \$ 754.08 |
|---|-----------|

GENERAL FOREIGN MISSIONS

| | |
|--|------------|
| Received from Churches and Camp and paid to Gen. Treas. | \$6,944.76 |
|--|------------|

PENSION FUND

| | |
|---|------------|
| Received from Churches Pastor's Fund | \$ 589.98 |
| Received from Churches Church Fund | 753.13 |
| Received from District Budget on Conference payment for evangelists and officers | 433.00 |
| Total receipts | \$1,776.11 |
| Paid to Pilgrim Pension Fund | \$1,776.11 |

SENIOR COLLEGE FUND

| | |
|---|-----------|
| Received from Churches and paid to Gen. Treas. | \$ 258.67 |
|---|-----------|

GENERAL SUNDAY SCHOOL AND YOUTH

| | |
|---|-----------|
| Received from Churches and paid to Gen. Treas. | \$ 248.69 |
|---|-----------|

CHURCH EXTENSION LOAN FUND

| | |
|---|-----------|
| Received from Churches and paid to Gen. Treas. | \$ 187.68 |
|---|-----------|

COLORADO SPRINGS BIBLE COLLEGE

| | |
|-------------------------------|------------|
| Received from Camp 1950 | \$ 46.35 |
| Received from Churches | 4,137.71 |
| Total receipts | \$4,184.06 |
| Paid to school | \$4,184.06 |

SUMMARY

| | |
|--|-------------|
| Balance in all funds July 18, 1950 | \$ 2,082.07 |
| Total received | 31,640.84 |
| Grand total | 33,722.91 |
| Total expenditures | 32,441.11 |
| Balance in all funds July 18, 1951 | 1,281.80 |

Conscientiously and respectfully submitted.

M. L. Pottenger, District Treasurer.

REPORT OF THE WAYS AND MEANS COMMITTEE

1. We recommend that all pastors pay three-fourths ($\frac{3}{4}$) of their ministerial tithe, through their local church treasurer, to the District Budget.

2. We recommend that the Evangelists, District Superintendent, Home Missionary Workers, and Evangelistic Singers pay 60% of their ministerial tithe to the District Budget and be it further resolved that the conference treasurer pay the 4% to the Pilgrim Pension Plan for those who desire to participate, if they pay their 60%.

3. We recommend that our churches be apportioned for the District Budget at the rate of \$2.00 per member in full standing; and at the rate of \$5.50 per member for the General Budget, which apportionment equals the following amounts for each church. The first item is the District Budget.

| | | | | | |
|-------------------|-------|--------|----------------------|-------|--------|
| Argonia | \$120 | \$330 | Lincoln | \$ 56 | \$154 |
| Big Bow | 20 | 55 | Lyndon | 18 | 49.50 |
| Bird City | 44 | 121 | Natoma | 24 | 66 |
| Brewster | 28 | 77 | Osawatomie | 70 | 192.50 |
| Colby | 48 | 132 | Oakley | 68 | 187 |
| Fall River | 56 | 154 | Sabetha | 104 | 286 |
| Fowler | 50 | 137.50 | Scott City | 34 | 93.50 |
| Fredonia | 148 | 407 | Sharon Springs | 34 | 93.50 |
| Garden City | 20 | 55 | St. Francis | 66 | 181.50 |
| Goff | .. | .. | Sylvan Grove | 10 | 55 |
| Goodland | 138 | 379.50 | Syracuse | 110 | 302.50 |
| Humboldt | 30 | 82.50 | Toronto | 40 | 110 |
| Hutchinson | 126 | 348.50 | Wichita | 104 | 286 |
| Johnson | 26 | 71.50 | Winona | 24 | 66 |
| Kansas City | 26 | 71.50 | Woodlawn | 14 | 38.50 |
| Lamont | 30 | 82.50 | | | |

4. We recommend that all churches calling the District Superintendent on trouble calls pay his traveling expenses.

5. We recommend that the District Superintendent have the privilege of conducting one revival meeting off the District, and that he have a two weeks vacation each year.

6. We recommend that all the churches send in all money to the District Treasurer so as to reach him by the tenth of each month.

7. We recommend that we pay our District Superintendent at the rate of \$200.00 per month and his traveling expense, and pay his telephone bill and \$15.00 for utilities.

8. We recommend that each Sunday School be apportioned the following per month for District Home Missions.

| | | | |
|-------------------|--------|----------------------|--------|
| Argonia | \$3.00 | Lincoln | \$3.00 |
| Bird City | 3.00 | Lyndon | 1.00 |
| Brewster | 1.50 | Natoma | 1.00 |
| Big Bow | 3.00 | Osawatomie | 3.00 |
| Colby | 3.00 | Oakley | 3.00 |
| Fall River | 2.00 | Sharon Springs | 2.00 |
| Fowler | 2.00 | Sabetha | 4.00 |
| Fredonia | 4.00 | Scott City | 2.00 |
| Garden City | 1.00 | St. Francis | 2.00 |
| Goodland | 5.00 | Sylvan Grove | 1.00 |
| Humboldt | 1.00 | Syracuse | 5.00 |
| Hutchinson | 4.00 | Toronto | 1.00 |
| Johnson | 3.00 | Wichita | 5.00 |
| Kansas City | 1.00 | Winona | 2.00 |
| Lamont | 2.00 | Woodlawn | 1.00 |

9. We recommend that each church be apportioned at the rate of 15 cents per member each year for the General Conference expense or 60 cents per quadrennium.

10. Whereas the General Board has requested that each district place its zone school in its district budget, be it resolved that each of our churches raise a monthly free will offering for our school.

11. We recommend that all churches take a love offering for the District Superintendent at the time of his visit.

12. We recommend that all money raised by the representatives of the General Church and institutional interests be turned over to the local church treasurer and be used for the purpose for which it was raised.

13. We recommend that our District Secretary be paid \$50.00 per year and that our District Treasurer be paid \$75.00 per year.

14. Be it resolved, that the traveling expense of any minister whose travel is authorized by the District have his traveling expense met on the same basis as the District Superintendent.

15. We recommend that each Sunday School take one special offering during the year for District Sunday School Committee.

16. We recommend that a form copy of the budget apportionments for each church be sent to the local church treasurer immediately after the conference.

M. L. Pottenger
H. K. Busby
H. L. Bland
Roy Glendenning

REPORT OF THE RESOLUTIONS COMMITTEE

LOCAL CHURCH WORK

1. Whereas many of our members are not familiar with the actions of this Conference therefore be it resolved: that each pastor shall at his earliest possible convenience familiarize his church with their responsibilities to the district as outlined by this conference.
2. We recommend that the sacrament of the Lord's Supper be observed in our churches at least once each quarter.
3. We further recommend that opportunity for baptism be given by our churches at least once a year.
4. Resolved that each pastor may hold two revival meetings each year off his charge.
5. Be it resolved that our churches do not open their doors to other churches, organizations, institutions or individuals for financial appeals.
6. Resolved that no pastor employ an evangelist outside the Pilgrim Holiness Church without first consulting the District Superintendent.
7. Inasmuch as some of our churches are quite a distance from our District Camp, be it resolved that each church pay the traveling expense of their delegate to Camp and Conference.
8. Resolved that the first prayer meeting of each month shall be donation night for the pastors of the District. The announcement to be made the Sunday previous by the Sunday School Superintendent.
9. Resolved that each pastor leaving his charge, leave the parsonage and premises clean and a complete calling list with location.
10. We recommend that the churches of the district be encouraged as far as possible to purchase Sunday School and Church supplies through our own Publishing House.
11. Whereas there are many of our churches that are failing to meet their financial requirements, therefore be it resolved that the District Superintendent, as he visits the district shall give this matter careful consideration with each local church board.
12. We recommend that each pastor be granted two weeks vacation with pay.
13. Resolved that each pastor read to his church section 65, page 49. of the manual at regular intervals.

SUNDAY SCHOOL AND YOUTH WORK

The duties of the District Sunday School Committee in harmony with the manual of the Pilgrim Holiness Church shall be as follows:

1. The District Sunday School Committee together with the District Superintendent and the District Young People's Committee shall arrange for Sunday School and Youth Conventions to be held in the District during the year.
2. To promote and encourage the Sunday School work throughout the District.
3. To present an annual report to the Conference which shall include the following:
 - a. A statement of the work accomplished during the year.
 - b. A statement of the general condition of the Sunday School work in the District.
4. To have published each month a District Sunday School sheet showing the attendance of each Sunday School in the District.
5. We recommend that where possible each local church conduct a summer Vacation Bible School and report of that work be sent the District Sunday School Committee.
6. We further recommend that each pastor resolve to make an earnest effort to attend and bring as large a delegation as possible of Sunday School Workers to the Sunday School Conventions.

Be it resolved that we, the District Conference, add our blessings to any of our youth, that may be privileged to attend the National Youth Convention in 1952.

CAMP AND CONFERENCE

1. We recommend that a system of rules and regulations governing our camp and premises be adopted by this conference which shall read as follows:

Whereas the Pilgrim Holiness Camp Grounds at Hutchinson, Kansas has been established and dedicated for the purpose of that fellowship and ministry that will promote and propagate scriptural holiness, it is expected that those attending shall willingly observe the following—

RULES

1. Smoking on grounds prohibited.
2. The wearing of immodest dress will not be tolerated.
3. No dogs or pets are permitted on camp grounds.
4. Those sleeping in dormitories are expected to be in by 10:45 p. m. unless special permission is obtained from those in authority.
5. Unmarried young ladies shall not be permitted to rent tents, except by special permission and that only if properly chaperoned.
6. Loud talking, rowdyism, or behaviour unbecoming a Christian will not be tolerated in the dormitories.
7. It is presumed that those attending the camp have read and are willing to observe the above rules and regulations.
8. Anyone refusing to comply with the above rules and regulations may expect to be asked to leave the camp premises without any refund of registration fee.

2. We further recommend that the above camp rules and regulations be printed on cards for display on camp premises and also that a copy be included in the camp advertisements sent to the churches.

3. We recommend that the first service of camp meeting be conducted on Friday night of the first week and that all pastors make a special effort to come on the day previous to assist in making preparations for the camp.

4. We further recommend that all pastors make a special effort to attend all of camp and conference.

5. Resolved that the District Camp have children's and young people's services; workers to be secured as soon as possible.

6. Resolved that we hold conference at the close of camp.

7. Resolved that each pastor urge his people to bring their musical instruments to camp.

8. Resolved that each church send in one or more blankets or quilts, three or more dish towels, one or more aprons, for use at the District Camp.

9. Resolved that the last Thursday night of the 1952 Camp, be designated as Young People's night and that the services be directed to the interests of our young people.

10. Resolved that those attending Sunday morning service of the Camp Meeting be given credit on the Sunday School attendance at home.

11. Resolved that we, as a Pilgrim Holiness Camp, have men and women's prayer bands and that the leaders be appointed by the District Council.

EDUCATIONAL COMMITTEE

1. We recommend that at each annual Camp Meeting on the last Thursday, Friday and Saturday, there shall be one daily session of the Educational and Examining Boards for the purpose of the examination

of minister. All ministers knowing themselves due to appear before these boards are urged to be present.

We further recommend that the time of each session shall be announced from the platform.

2. We recommend that all ministers pursuing the Conference Ministerial Course take the subjects through the Correspondence and Extension departments of the Pilgrim schools who offer same. The Educational Board will serve only to review standing of the candidates.

Information regarding the courses and enrollment blanks will be furnished by the colleges.

Other questions may be addressed to the corresponding secretary of the Educational Board.

We further recommend that all candidates bring a transcript of their credits received throughout the year when appearing before the Educational Board.

3. We recommend that the conference secretary provide uniform blanks for the pastors who have candidates subject to examination for credentials as provided for in section 148, page 108 in the manual.

DISTRICT WORK

1. Be it resolved that, we as a district join, in the Tri-District Ministerial Convention to be held at Alva, Oklahoma, the date to be announced later.

2. Whereas: It would be of interest to the district and local churches, to know how they stand on payments of district budget, be it resolved that a form sheet be included in the Sunday School bulletin listing churches with amount paid.

3. Whereas the present report blanks are inadequate for need of our district, in headings, size, items, etc., be it resolved that District Council be authorized to print a report blank suitable for district.

4. Resolved that any pastor who is required to be away from his church on any District, local or general business, receive his salary as usual.

5. Resolved that we, as the Kansas District of the Pilgrim Holiness Church, go on record as opposed to members of the Pilgrim Holiness Church, being required to violate their religious convictions and the standards of the Church in physical education classes in the public schools.

6. Resolved that the District Superintendent have charge of the District equipment.

7. Resolved that the committees be appointed by the council, said committees to be appointed before the adjournment of the conference.

8. Resolved that in the event of death of any of pastors' or evangelists' immediate family, the District Secretary shall be immediately wired and in turn each pastor notified by wire by the District Secretary.

9. Be it resolved that the District Superintendent give a financial report along with his annual report to the conference.

10. Be it resolved that no mortgage be placed upon our District Camp Ground, parsonage and equipment pertaining thereto, without two-thirds vote of this conference.

SPECIAL RESOLUTIONS

1. Resolved that we as a Conference show our appreciation to our District Superintendent, Rev. Wayne R. Plummer, by a rising vote of confidence and thanks for his labors of love during the past year.

2. Resolved that we show our appreciation to Brother Carl Dillion for the beef he gave the camp by saying "God Bless You."

3. Resolved that by a rising vote of thanks we express our appreciation to our camp cooks, Sister H. K. Busby and Sister R. L. Jellison, and to the dining room force, who have served so faithfully.

4. Resolved that we as a conference express our appreciation to our Camp Evangelists, Rev. Mrs. Annie Laurie Griener and Rev. O. L. Griener for their scriptural ministry, and to our song evangelists Rev. and Mrs. Mark Waddell by a rising vote of thanks and that the conference secretary be instructed to write them of this conference action.

5. Resolved that we as conference express our appreciation to our Camp Young People's worker, Rev. Herschel Hughes, with a rising vote of thanks.

6. Whereas we are privileged to have as our presiding officer, Rev. A. H. Wilson, 2nd Assistant General Superintendent, for this conference, Be it resolved that we show our appreciation for his Godly leadership and capable supervision by a rising vote of thanks.

DISTRICT SUNDAY SCHOOL COMMITTEE REPORT

Your offerings have made it possible to publish eight bulletins and purchase a mimeograph for district Sunday School work.

Three profitable conventions were held during the year.

The district shows a small gain in average weekly attendance. Sharon Springs with a 56% gain receives the certificate of achievement for the highest percentage gain.

REPORT OF THE FOREIGN MISSIONARY COMMITTEE

1. We recommend that by a rising vote of thanks, we express our appreciation to Rev. U. N. Freeman for his faithful representation of foreign missions to our camp.

2. We recommend that the first Sunday afternoon of the 1952 camp meeting be devoted to the interest of foreign missions.

3. We recommend that the first Sunday of each month be designated as missionary Sunday by our local churches, that prayer be offered and that an offering be taken for foreign missions.

4. Because of the cost of carrying on our foreign missionary work, we recommend that our churches give as much as possible above the regular foreign missionary offering.

5. We recommend that our pastors encourage those who feel the call of God to special service, and the church assist them in their preparation as much as possible.

Rev. H. L. Solter, C. B. Colaw,
Rev. F. N. Griffin, Rev. J. E. Isgrigg.

DEACONESS REPORT

| DEACONESS | | | | | | | | | | | | | | | | | |
|---------------------------------|------|------------|----|-----|----|-----|-----|---------|----------------------|----------------------|------------------------|--|--|--|--|--|----|
| REPORT | | | | | | | | | | | | | | | | | |
| Mrs. B. F. Durham | Ord. | Lucas | 40 | 50 | 25 | Yes | Yes | \$80.00 | Pastored Lucas | | | | | | | | |
| Mrs. Zelma Keller | Lic. | Evan. | 38 | 50 | | Yes | Yes | | Support with husband | | | | | | | | |
| Miss Almada Martzolf | | | | | | | | | | | | | | | | | |
| Mrs. C. A. Overholt | Lic. | Past. | 1 | 14 | 92 | 18 | 8 | Yes | Yes | All studies complete | | | | | | | 13 |
| Mrs. Isabelle Sager | Lic. | Scott City | 6 | 6 | 3 | 54 | 3 | Yes | | | | | | | | | |
| Mrs. Granville Carroll | Ord. | | 54 | | | | | | | 137.50 | With husband in school | | | | | | |
| TOTAL | | | 47 | 112 | 3 | 246 | 46 | 8 | 3 Yes 1 No | Yes | 217.50 | | | | | | |
| Licensed or Ordained | | | | | | | | | | | | | | | | | |
| Present Field of Labor | | | | | | | | | | | | | | | | | |
| Church Services Conducted | | | | | | | | | | | | | | | | | |
| Prayer Services Conducted | | | | | | | | | | | | | | | | | |
| Other Services Conducted | | | | | | | | | | | | | | | | | |
| Times Preached | | | | | | | | | | | | | | | | | |
| Visits | | | | | | | | | | | | | | | | | |
| Homes Prayed in | | | | | | | | | | | | | | | | | |
| Number of Poor Helped | | | | | | | | | | | | | | | | | |
| Souls Dealt With Personally | | | | | | | | | | | | | | | | | |
| Number Professed Regeneration | | | | | | | | | | | | | | | | | |
| Number Professed Sanctification | | | | | | | | | | | | | | | | | |
| Do You Take The Advocate | | | | | | | | | | | | | | | | | |
| Subscriptions for The Advocate | | | | | | | | | | | | | | | | | |
| Do You Tithe? | | | | | | | | | | | | | | | | | |
| Amount of Support Received | | | | | | | | | | | | | | | | | |
| Remarks | | | | | | | | | | | | | | | | | |
| Cottage Prayer Services | | | | | | | | | | | | | | | | | |

EVANGELISTS
and
UNSTATIONED
MINISTERS'
REPORT

| | No. Sermons | No. Songs Sung | No. Calls | Homes Prayed in | Revivals in P.H.C. | Revivals Elsewhere | Total Revivals | Week End Meetings or Prayer Services | No. Seeking Regeneration | No. Seeking Sanctification | Total Seekers | No. Children Dedicated | No. Prayed with for Healing | No. Marriages | No. Funerals | Children's Services | No. Baptized | Amount of Support | Miles Traveled | Do You Tithe | Do You Tithe to P.H.C. | No. Advocate Subscriptions | Do You Subscrib |
|---|-------------|----------------|-----------|-----------------|--------------------|--------------------|----------------|---|-----------------------------|-------------------------------|---------------|---------------------------|--------------------------------|---------------|--------------|---------------------|--------------|----------------------|----------------|--------------|---------------------------|-------------------------------|-----------------|
| Mrs. Velma Berggren | | | | | | | | | | | | | | | | | | | | | | | |
| Mrs. H. L. Bland | 6 | | 546 | | | | | | | | | | | | 1 | | | | | | | | |
| Donald Bogart | | | | | | | | | | | | | | | | | | | | | | | |
| H. K. Busby | 242 | | | | 16 | | 16 | | 15 | 8 | 606 | | | | | | | \$2,570.00 | | Yes | Yes | | Yes |
| A. H. Clark | 88 | | 251 | | | | 3 | | | | 23 | | | | | | | 365.92 | 10,779 | Yes | Yes | None | Yes |
| Granville Carroll | 45 | 20 | | | 2 | | 2 | 1 | 11 | 7 | 18 | | 3 | | | | | 312.00 | 1,400 | Yes | Yes | | Yes |
| M. M. Conrad | 125 | 50 | 100 | | 1 | | 1 | 12 | 12 | 10 | 22 | | | | | | | 1,120.00 | 9,000 | Yes | Yes | 5 | Yes |
| Mrs. M. M. Conrad — This report covers both Rev. and Mrs. M. M. Conrad. | | | | | | | | | | | | | | | | | | | | | | | |
| Mrs. J. J. Cork | | | | | | | | | | | | | | | | | | | | | | | |
| Mrs. J. D. Craik | | | | | | | | | | | | | | | | | | | | | | | |
| A. P. Cummins | | | | | | | | | | | | | | | | | | | | | | | |
| J. John DcII | 94 | | 600 | | 2 | | 2 | 1 | 25 | 15 | 40 | 4 | 20 | 4 | 2 | | | | | Yes | Yes | | Yes |
| Mrs. Flossie Doll | 10 | 20 | 140 | | | | | | | | | | | | | | | | | Yes | | | |
| Joye Doane | | | | | | | | | | | | | | | | | | | | | | | |
| B. F. Durham | 249 | 80 | 40 | | 16 | | 16 | 10 | 200 | 185 | 385 | 2 | 25 | | | | | 1,780.84 | 6,875 | Yes | Yes | 43 | Yes |
| George Farr | | | | | | | | | | | | | | | | | | | | | | | |
| S. A. Gillum | | | | | | | | | | | | | | | | | | | | | | | |
| Mrs. F. N. Griffin | | | | | | | | | | | | | | | | | | | | | | | |
| Marion Hill | 312 | | | 210 | 10 | 7 | 17 | | 160 | 95 | 255 | | 29 | | | | 7 | 3,551.79 | 8,165 | Yes | Yes | 54 | Yes |
| Mrs. O. O. R. Hofen | | | | | | | | | | | | | | | | | | | | | | | |
| J. Orvan Keller | 250 | | 1500 | | 4 | 11 | 15 | | 80 | 30 | 110 | | 25 | | 2 | | | 2,777.47 | 20,000 | Yes | Partly | 5 | Yes |
| Mrs. Carrie Koehler | | | | | | | | | | | | | | | | | | | | | | | |
| J. H. Philpot | 323 | | | 92 | 21 | 2 | 23 | | 449 | 285 | 734 | | 25 | | | | | 3,786.00 | 14,920 | Yes | Yes | 48 | Yes |
| F. M. Patton | 46 | | 5 | | | | | | | | | | | | | | | 338.92 | 2,000 | Yes | Yes | | Yes |
| Paul Sickler | 2 | | | | | | | | | | | | | | 1 | | | | | | | | |
| Mrs. H. L. Solter | | | | | | | | | | | | | | | | | | | | Yes | Yes | | Yes |
| B. J. Taylor | | | | | | | | | | | | | | | | | | | | | | | |
| L. F. Upshaw | 7 | 35 | 276 | 83 | | | | | 13 | | 13 | | | | | | | 10.58 | | Yes | Yes | | Yes |
| H. H. Wclcott | | | | | | | | | | | | | | | | | | | | | | | |
| J. T. Randall | 18 | | 22 | | | | | | | | | | | | 1 | | | 60.00 | 2 880 | Yes | Yes | | Yes |
| Richard Long | | | | | | | | | | | | | | | | | | | | | | | |
| Paul McNall | | | | | | | | | | | | | | | | | | | | | | | |
| Frank Welch | | | | | | | | | | | | | | | | | | | | | | | |
| Mrs. H. H. Lyder | 1 | | 46 | | | | | 5 | | | | | | | | 15 | | | | | | | |
| Ruth Berggren | | | | | | | | | | | | | | | | | | | | | | | |
| Mrs. Richard Long | | | | | | | | | | | | | | | | | | | | | | | |
| TOTALS | 1818 | 205 | 3521 | 385 | 72 | 20 | 167 | 17 | 965 | 635 | 2206 | 6 | 127 | 4 | 7 | 15 | 7 | \$16,673.52 | 75,019 | Yes | Partly | 155 | Yes |

SUNDAY SCHOOL STATISTICAL REPORT

S. S. ENROLLMENT

S. S. ATTENDANCE

S. S. MISCELLANEOUS DEPARTMENTS

| | No. Teachers and Officers | No. Scholars Enrolled | Total Enrollment | Average Weekly Attendance | Average Weekly Attendance Last Report | Gain | Loss | No. on Cradle Roll | No. Sessions | No. Converted | No. Joined Church | Books in Library |
|--------------------------|------------------------------|--------------------------|---------------------|------------------------------|---|------|------|-----------------------|--------------|---------------|----------------------|---------------------|
| Argonia | 9 | 66 | 75 | 61 | 56 | 5 | .. | 6 | 52 | .. | .. | .. |
| Big Bow | 9 | 76 | 85 | 42 | 43 | .. | 1 | 9 | 51 | .. | .. | 96 |
| Bird City | 7 | 30 | 37 | 26 | 27 | .. | 1 | 1 | 52 | .. | 7 | .. |
| Brewster | 9 | 46 | 55 | 38 | 31 | 7 | .. | .. | .. | .. | .. | .. |
| Colby | 9 | 60 | 69 | 43 | 45 | .. | 2 | 11 | 52 | 5 | .. | .. |
| Fall River | 5 | 59 | 64 | 44 | 34 | 10 | .. | 4 | 52 | .. | .. | .. |
| Fowler | 9 | 37 | 46 | 39 | 38 | 1 | .. | 8 | 52 | .. | 5 | 127 |
| Fredonia | 21 | 84 | 105 | 89 | 92 | .. | 3 | 24 | 52 | .. | .. | .. |
| Garden City | 5 | 29 | 34 | 20 | 22 | .. | 2 | .. | .. | .. | .. | .. |
| Goff | .. | .. | .. | .. | .. | .. | .. | .. | .. | .. | .. | .. |
| Goodland | 13 | 169 | 182 | 129 | 115 | 14 | .. | 42 | 52 | .. | .. | .. |
| Humboldt | 5 | 25 | 30 | 19 | 20 | .. | 1 | .. | 51 | .. | .. | .. |
| Hutchinson | 13 | 110 | 123 | 104 | 125 | .. | 21 | 6 | 50 | 7 | 6 | .. |
| Johnson | 9 | 85 | 94 | 65 | 58 | 7 | .. | .. | 51 | .. | .. | .. |
| Kansas City | 6 | 12 | 18 | 18 | 17 | 1 | .. | .. | .. | .. | 2 | .. |
| Lamont | 6 | 30 | 36 | 17 | 14 | 3 | .. | .. | 48 | .. | .. | .. |
| Lincoln | 9 | 53 | 62 | 47 | 40 | 7 | .. | 3 | 52 | 6 | .. | .. |
| Lucas | .. | .. | .. | .. | .. | .. | .. | .. | .. | .. | .. | .. |
| Lyndon | 7 | 28 | 35 | 25 | 19 | 6 | .. | .. | 52 | .. | .. | .. |
| Natoma | 6 | 17 | 24 | 23 | 22 | 1 | .. | .. | 52 | .. | .. | .. |
| Osawatomie | 9 | 51 | 60 | 59 | 53 | 6 | .. | 3 | 52 | .. | .. | .. |
| Oakley | 7 | 35 | 42 | 35 | 39 | .. | 4 | 2 | 52 | .. | .. | .. |
| Sabetha | 10 | 70 | 80 | 62 | 65 | .. | 3 | .. | 51 | .. | .. | .. |
| Scott City | 9 | 60 | 69 | 40 | 46 | .. | 6 | 14 | 52 | 4 | .. | .. |
| Sharon Springs | 9 | 60 | 69 | 42 | 27 | 15 | .. | .. | 52 | 1 | 3 | .. |
| St. Francis | 10 | 100 | 110 | 71 | 85 | .. | 14 | 35 | 52 | .. | .. | .. |
| Sylvan Grove | 6 | 23 | 29 | 16 | 23 | .. | 7 | 6 | 46 | .. | .. | .. |
| Syracuse | 11 | 149 | 160 | 121 | 128 | .. | 7 | .. | 52 | .. | 5 | 6 |
| Toronto | 7 | 14 | 21 | 15 | 16 | .. | 1 | 4 | 52 | .. | 4 | .. |
| Wichita | 12 | 185 | 197 | 160 | 161 | 1 | .. | 12 | 52 | .. | .. | .. |
| Winona | 8 | 37 | 45 | 28 | 29 | .. | 1 | .. | 52 | .. | .. | .. |
| Woodlawn | 5 | 32 | 37 | 26 | 20 | 6 | .. | .. | .. | .. | .. | .. |
| TOTALS | 260 | 1832 | 2092 | 1524 | 1510 | 90 | 74 | 190 | 1330 | 23 | 32 | 229 |
| Unorganized Churches | | | | | | | | | | | | |
| Keystone | 5 | 16 | 21 | 18 | 14 | 4 | .. | .. | 52 | .. | .. | .. |
| Lakin | .. | .. | .. | .. | .. | .. | .. | .. | .. | .. | .. | .. |
| Wichita People's Mission | .. | .. | .. | .. | .. | .. | .. | .. | .. | .. | .. | .. |

MEMBERSHIP

CHURCH SERVICES

| CHURCH STATISTICAL REPORT | Members on Last Report | Names Dropped from Roll | Transferred by Letter | No. Deaths | Total Removals | Additions | | Ordained Ministers | Licensed Ministers | Local Ministers | Deaconesses | Probationary Members | Members in Full Standing Besides Ministerial | Gain | Loss | Total Membership | No. Preaching Services | Church Prayer Services | Open Air Services | Jail or Prison Services | Cottage Services | Other Services | Total Services | No. Advocate Subscriptions |
|---------------------------------|---------------------------|----------------------------|--------------------------|------------|----------------|-----------|-----------|-----------------------|-----------------------|--------------------|-------------|-------------------------|---|------|------|---------------------|---------------------------|---------------------------|----------------------|----------------------------|---------------------|----------------|----------------|-------------------------------|
| | | | | | | Faith | By Letter | | | | | | | | | | | | | | | | | |
| Argonia | 61 | .. | 2 | .. | 2 | 1 | .. | 3 | .. | .. | .. | .. | 57 | .. | 1 | 60 | 103 | 52 | 8 | .. | .. | 2 | 165 | .. |
| Big Bow | 12 | .. | 2 | .. | 2 | .. | .. | 3 | .. | .. | .. | .. | 7 | .. | 2 | 10 | 112 | 47 | .. | .. | .. | .. | 159 | .. |
| Bird City | 16 | .. | 1 | .. | 1 | 7 | .. | 2 | 1 | .. | .. | .. | 19 | 6 | .. | 22 | 116 | 50 | 1 | .. | .. | .. | 167 | 13 |
| Brewster | 18 | 2 | 2 | .. | 4 | .. | 2 | 2 | .. | .. | .. | .. | 14 | .. | 2 | 16 | 124 | 56 | .. | .. | 7 | 187 | .. | |
| Colby | 28 | 1 | 2 | .. | 3 | .. | .. | 1 | .. | .. | .. | 1 | 23 | .. | 3 | 25 | 126 | 48 | .. | .. | .. | 187 | .. | |
| Fall River | 30 | .. | 2 | .. | 2 | .. | .. | 2 | 1 | .. | .. | .. | 25 | .. | 2 | 28 | 94 | 43 | .. | .. | .. | 137 | .. | |
| Fowler | 23 | .. | 3 | .. | 3 | 5 | .. | 1 | .. | .. | .. | .. | 24 | 2 | .. | 25 | 112 | 46 | .. | .. | .. | 158 | .. | |
| Fredonia | 74 | 4 | .. | .. | 4 | 4 | .. | 5 | .. | 1 | .. | .. | 68 | .. | .. | 74 | 128 | 44 | .. | .. | 23 | 195 | 27 | |
| Garden City | 10 | .. | .. | .. | .. | .. | .. | 1 | .. | .. | .. | .. | 9 | .. | .. | 10 | 120 | 52 | .. | .. | 12 | 184 | 6 | |
| Goff | .. | .. | .. | .. | .. | .. | .. | .. | .. | .. | .. | .. | .. | .. | .. | .. | .. | .. | .. | .. | .. | .. | .. | |
| Goodland | 75 | 8 | .. | 1 | 9 | 3 | .. | 1 | .. | .. | .. | .. | 68 | .. | 6 | 69 | 130 | 50 | .. | .. | 70 | 250 | .. | |
| Humboldt | 17 | .. | .. | .. | .. | .. | .. | 2 | .. | .. | .. | .. | 15 | .. | .. | 17 | 107 | 30 | .. | .. | 7 | 144 | 1 | |
| Hutchinson | 57 | 1 | .. | .. | 1 | 7 | .. | 6 | .. | 1 | .. | .. | 56 | 6 | .. | 63 | 124 | 47 | .. | 8 | .. | 179 | .. | |
| Johnson | 11 | .. | .. | .. | .. | 2 | .. | 1 | .. | .. | .. | .. | 12 | 2 | .. | 13 | 142 | 48 | .. | .. | 1 | 191 | .. | |
| Kansas City | 11 | 2 | .. | .. | 2 | 2 | 2 | 1 | .. | 1 | .. | .. | 11 | 2 | .. | 13 | 102 | 46 | .. | .. | 4 | 162 | 3 | |
| Lamont | 16 | 1 | .. | .. | 1 | .. | .. | 2 | .. | .. | .. | .. | 13 | .. | 1 | 15 | 93 | 41 | .. | .. | 16 | 150 | 7 | |
| Lincoln | 30 | 1 | .. | 1 | 2 | .. | .. | 1 | .. | .. | .. | .. | 27 | .. | 2 | 28 | 130 | 68 | .. | .. | 30 | 241 | .. | |
| Lucas | .. | .. | .. | .. | .. | .. | .. | .. | .. | .. | .. | .. | .. | .. | .. | .. | .. | .. | .. | .. | .. | .. | .. | |
| Lyndon | 9 | .. | .. | .. | .. | .. | .. | 1 | .. | .. | .. | .. | 8 | .. | .. | 9 | 74 | 47 | .. | .. | .. | 131 | .. | |
| Natoma | 16 | 4 | .. | .. | 4 | .. | 1 | 1 | .. | .. | .. | .. | 10 | .. | 4 | 12 | 103 | 46 | .. | .. | 10 | 150 | .. | |
| Osawatomie | 36 | .. | 1 | 1 | 2 | 1 | .. | 1 | .. | .. | .. | .. | 34 | .. | 1 | 35 | 143 | 44 | .. | .. | .. | 187 | .. | |
| Oakley | 30 | .. | .. | .. | .. | 4 | .. | 2 | 3 | .. | .. | .. | 29 | 4 | .. | 34 | 113 | 52 | .. | .. | 1 | 166 | 8 | |
| Sabetha | 54 | .. | 1 | 1 | 2 | .. | .. | 2 | .. | 1 | 2 | .. | 47 | .. | 2 | 52 | 128 | 63 | .. | .. | .. | 191 | 18 | |
| Scott City | 19 | 2 | .. | .. | 2 | .. | .. | 3 | .. | 1 | 1 | .. | 12 | .. | 2 | 17 | 102 | 50 | .. | .. | .. | 152 | 9 | |
| Sharon Springs | 14 | .. | .. | .. | .. | 3 | .. | 1 | 1 | 1 | .. | .. | 16 | 3 | .. | 17 | 126 | 41 | .. | .. | 33 | 203 | 11 | |
| St. Francis | 33 | .. | .. | .. | .. | .. | .. | 1 | 2 | .. | .. | .. | 31 | .. | .. | 33 | 98 | 48 | .. | .. | 2 | 148 | 16 | |
| Sylvan Grove | 11 | .. | .. | .. | .. | 1 | 1 | 1 | .. | .. | .. | .. | 11 | 1 | .. | 12 | 96 | 42 | .. | .. | 2 | 140 | 4 | |
| Syracuse | 51 | .. | 2 | .. | 2 | 6 | .. | 1 | .. | .. | .. | .. | 54 | 4 | .. | 55 | 130 | 52 | .. | .. | 93 | 327 | 23 | |
| Toronto | 16 | .. | .. | .. | .. | 4 | .. | 1 | .. | 1 | .. | .. | 18 | 4 | .. | 20 | 120 | 50 | .. | .. | 45 | 215 | 2 | |
| Wichita | 52 | 10 | .. | .. | 10 | 10 | 10 | 1 | 1 | 1 | .. | .. | 49 | .. | .. | 52 | 152 | 50 | .. | .. | 40 | 242 | 35 | |
| Winona | 12 | .. | .. | .. | .. | .. | .. | 2 | .. | .. | .. | .. | 10 | .. | .. | 12 | 104 | 51 | .. | .. | .. | 155 | .. | |
| Woodlawn | 7 | .. | .. | .. | .. | .. | .. | .. | .. | 1 | 2 | .. | 4 | .. | .. | 7 | 31 | 52 | .. | .. | .. | 83 | 5 | |
| TOTALS | 830 | 36 | 18 | 4 | 48 | 60 | 14 | 51 | 11 | 6 | 7 | 1 | 772 | 34 | 28 | 830 | 3383 | 1456 | 9 | 8 | 228 | 262 | 5346 | 188 |
| Unorganized Churches | | | | | | | | | | | | | | | | | | | | | | | | |
| Keystone | .. | .. | .. | .. | .. | .. | .. | .. | .. | .. | .. | .. | .. | .. | .. | .. | 47 | .. | .. | .. | .. | .. | 47 | .. |
| Lakin | .. | .. | .. | .. | .. | .. | .. | .. | .. | .. | .. | .. | .. | .. | .. | .. | .. | .. | .. | .. | .. | .. | .. | .. |
| Wichita People's Mission | .. | .. | .. | .. | .. | .. | .. | .. | .. | .. | .. | .. | .. | .. | .. | .. | .. | .. | .. | .. | .. | .. | .. | .. |

PASTOR'S REPORT

| PASTOR'S REPORT | | | PASTOR'S SUPPORT | | | | | | | | | | | | | | | | | | | | | |
|--------------------------|-----------------------|----------------------|----------------------|---------------------|------------------|----------------------|-------------|-------------------|--------------------|----------------------|------------------------|-----------------------------|--------------------|--------------|------------------------|------------------------|---------------|--------------|-------------------------|-------------------------|--------------------|---------------|----------------|--------------------|
| | | | | | | | | | | | | | | | | | | | | | | | | |
| CHURCHES | Time on Present Field | Licensed or Ordained | No. Sermons Preached | No. Prayer Services | Calls to Members | Calls to Non-Members | Total Calls | Revivals on Field | Revivals Elsewhere | Seeking Regeneration | Seeking Sanctification | Dealt with in Personal Work | Prayed for Healing | No. Baptisms | No. Communion Services | No. Children Dedicated | No. Marriages | No. Funerals | Cash Support for Church | Est. Donation and Gifts | Parsonage Supplied | Total Support | Name of Pastor | |
| Argonia | 4 | 10 | Ord. | 79 | 48 | 154 | 157 | 311 | 2 | | 45 | 19 | 64 | 5 | | | | 1 | | \$1,820.00 | \$169.00 | Yes | \$1,989.00 | O. R. Hofen |
| Big Bow | 4 | 10 | Ord. | 96 | 50 | 32 | 340 | 372 | 2 | | 4 | 2 | 30 | 10 | | 3 | | | | 2,080.00 | 336.99 | Yes | 2,416.99 | H. L. Solter |
| Bird City | 6 | 10 | Ord. | 68 | 8 | 65 | 265 | 330 | 2 | | 2 | 3 | 26 | 11 | | 2 | | | | 2,418.47 | 210.90 | Yes | 2,629.37 | J. J. Cork |
| Brewster | | 10 | Ord. | 74 | 36 | 140 | 371 | 511 | | | 6 | 3 | 85 | 1 | | | | 1 | | 900.00 | 438.28 | Yes | 1,338.28 | Ralph Armstrong |
| Colby | 2 | 10 | Ord. | 95 | 19 | 136 | 257 | 393 | | | 12 | 5 | 16 | 9 | | | 6 | 1 | | 1,820.00 | 358.00 | Yes | 2,178.00 | Harley Fortner |
| Fall River | 1 | 10 | Ord. | 86 | 50 | 292 | 530 | 822 | 1 | | | | 35 | | | | | 2 | | 1,138.05 | 75.00 | Yes | 1,213.05 | Harold Bland |
| Fowler | | 1 | Ord. | | | | | | | | | | | | | | | | | 1,203.50 | | | 1,203.50 | George Farr |
| Fredonia | 1 | 10 | Ord. | 126 | 44 | 330 | 183 | 513 | 2 | 1 | 36 | 21 | | 35 | 13 | 2 | 6 | 3 | 2 | 1,820.00 | 235.00 | Yes | 2,055.00 | Herschel Hughes |
| Garden City | 3 | 10 | Ord. | 101 | 15 | 88 | 417 | 505 | | | 3 | 2 | 15 | 10 | | | | | | 1,014.50 | 76.35 | Yes | 1,090.85 | B. F. Ireland |
| Golf | | | | | | | | | | | | | | | | | | | | | | | | Mickie Maynard |
| Godland | 6 | 10 | Ord. | 92 | 50 | | | 645 | 2 | 1 | 36 | 23 | | | 24 | 2 | 6 | 2 | 5 | 2,600.00 | 250.00 | Yes | 2,850.00 | E. W. Burton |
| Humboldt | 2 | 10 | Ord. | 92 | 37 | 31 | 44 | 75 | | 1 | 4 | 2 | 8 | 3 | | 2 | | | 1 | 734.30 | 76.55 | Yes | 810.85 | Andrew Wylie |
| Hutchinson | 6 | 10 | Ord. | 86 | 30 | 191 | 413 | 604 | 2 | 1 | | | | | | | | | | 2,210.00 | 295.00 | Yes | 2,505.00 | Ray L. Jellison |
| Johnson | 5 | 10 | Ord. | 84 | 35 | 135 | 176 | 311 | | | 3 | | | | | | | 4 | 3 | 1,820.00 | 219.00 | Yes | 2,039.00 | A. E. Whittington |
| Kansas City | 1 | 10 | Ord. | 123 | 50 | 28 | 130 | 158 | 2 | | 3 | 1 | | 1 | | | | | | 48.00 | | Yes | 48.00 | H. C. Freetag |
| Lamont | 2 | 10 | Ord. | 100 | 43 | 72 | 136 | 208 | 1 | 1 | 2 | 2 | | | 1 | | | | | 1,115.00 | 59.20 | Yes | 1,174.20 | Lorren Elliott |
| Lincoln | 2 | | Ord. | 92 | 48 | 90 | 80 | 170 | 2 | | 17 | 10 | 12 | 2 | | 1 | | | 2 | 1,558.35 | 65.00 | Yes | 1,623.35 | M. L. Pottenger |
| Lucas | | | | | | | | | | | | | | | | | | | | | | | | Mrs. B. F. Durham |
| Lyndon | 2 | 10 | Ord. | 74 | 47 | 45 | 214 | 259 | | | 7 | 1 | 31 | 1 | | 2 | | | | 485.38 | 83.00 | Yes | 568.38 | Elmer Jantz |
| Natoma | 1 | 10 | Ord. | 76 | 22 | 21 | 49 | 70 | | | 6 | 1 | 4 | 1 | | | | | | 588.37 | 192.97 | Yes | 781.34 | H. H. Lyder |
| Osawatomie | 2 | 10 | Ord. | 80 | 41 | 171 | 130 | 301 | 2 | | 9 | 14 | 8 | 19 | | 1 | 3 | | 2 | 1,315.00 | 306.70 | Yes | 1,621.70 | Alvin Reissig |
| Oakley | 2 | 10 | Ord. | 86 | 31 | 166 | 40 | 206 | 2 | | 3 | 6 | | | | 1 | | 1 | | 1,900.00 | 612.90 | Yes | 2,512.90 | Floyd Eichelberger |
| Sabetha | 2 | 10 | Ord. | 82 | 52 | 337 | 308 | 645 | 3 | | 16 | 12 | 42 | 18 | 14 | 2 | | 2 | 2 | 1,820.00 | 369.10 | Yes | 2,189.10 | Henry Jones |
| Scott City | 2 | 10 | Ord. | 100 | 32 | 258 | 262 | 520 | | | 5 | | 6 | | 2 | 1 | | | 2 | 1,385.98 | 537.25 | Yes | 1,923.23 | Floyd Griffin |
| Sharon Springs | | 10 | Lic. | 78 | 19 | 59 | 150 | 209 | 2 | | 15 | 17 | 25 | | | 1 | | | | 795.80 | 523.46 | Yes | 1,319.26 | Charles Colaw, Jr. |
| St. Francis | 6 | 7 | Ord. | 98 | 48 | 158 | 221 | 379 | 2 | | 8 | 10 | 11 | 10 | | 2 | | | | 1,428.06 | 1998.00 | Yes | 3,426.06 | E. R. Snook |
| Sylvan Grove | 6 | 10 | Ord. | 86 | 27 | 15 | 15 | 30 | | | 1 | 5 | 8 | 1 | | 3 | | | 1 | 210.81 | 25.00 | | 235.81 | Francis Hobbs |
| Syracuse | 2 | 10 | Ord. | 140 | 52 | | | 600 | 3 | 1 | 20 | 3 | 20 | 6 | 14 | 1 | 7 | 3 | 3 | 2,600.00 | 547.95 | Yes | 3,147.95 | Abraham I. Wise |
| Toronto | 1 | 10 | Ord. | 87 | 46 | 138 | 132 | 270 | 1 | | 1 | 1 | 1 | 12 | | 2 | | 1 | 5 | 690.00 | 199.75 | Yes | 889.75 | Claude Overholt |
| Wichita | 6 | 10 | Ord. | 90 | 50 | 256 | 735 | 991 | 3 | 2 | 25 | 20 | 25 | 20 | | 1 | | 3 | 5 | 2,345.00 | 525.00 | Yes | 2,870.00 | Roy Glendening |
| Winona | 6 | 10 | Ord. | 101 | 52 | 47 | 108 | 155 | 1 | | 1 | | 5 | | | 1 | | | | 1,040.00 | 175.00 | Yes | 1,215.00 | J. E. Isgrigg |
| Woodlawn | | 3 | Local | 31 | 9 | | 132 | 132 | | | | | | | | | | | | 225.00 | 92.95 | Yes | 317.95 | John Keller |
| TOTALS | | | | 2603 | 1091 | 3455 | 5995 | 10,695 | 37 | 8 | 315 | 183 | 480 | 175 | 67 | 31 | 28 | 20 | 37 | 41,129.57 | 9053.30 | | 50,182.87 | |
| Unorganized Churches | | | | | | | | | | | | | | | | | | | | | | | | |
| Keystone | 1 | 2 | Local | 46 | | | | 5 | | | | | | | | | | | | 294.33 | 44.59 | No | 338.92 | Fred Patton |
| Lakin | | 2 | | 16 | 7 | | | 75 | | | | | | | | | | | | 40.00 | 25.00 | | 65.00 | Orval Gwaltney |
| Wichita People's Mission | | | | | | | | | | | | | | | | | | | | | | | | J. John Doll |
| Sub-Total | | | | | | | | | | | | | | | | | | | | 334.33 | 69.59 | | 403.92 | |

CHURCH TREASURER'S REPORT — No. 1

| RECEIPTS | Cash Brought Forward | Regular Offerings | Special Offerings | Building Fund | TOTAL | Transferred from Sunday School | Transferred from Young People's Society |
|--------------------------------|----------------------|-------------------|-------------------|---------------|------------|--------------------------------|---|
| Argonia | \$ 332.09 | \$2,334.91 | \$1,953.95 | \$145.00 | \$4,765.95 | | |
| Big Bow | 312.67 | 1,909.87 | 2,038.74 | | 4,261.28 | \$259.90 | \$7.14 |
| Bird City | 70.96 | 4,008.37 | 199.12 | 2,013.00 | 6,291.45 | 188.38 | |
| Brewster | 300.37 | 2,717.32 | 962.09 | | 3,979.78 | | |
| Colby | 95.93 | 2,096.67 | 1,187.76 | | 3,380.36 | | |
| Fall River | 142.32 | 1,019.28 | 1,093.48 | | 2,255.08 | | |
| Fowler | 106.73 | 1,632.74 | 1,320.02 | | 3,059.49 | 264.04 | |
| Fredonia | .51 | 2,767.36 | 1,585.08 | | 4,352.95 | | |
| Garden City | | 1,177.96 | 407.56 | | 1,585.52 | | |
| Goff | | | | | | | |
| Goodland | 217.74 | 7,699.10 | 2,319.71 | | 10,236.55 | 80.82 | |
| Humboldt | 57.81 | 813.63 | 527.00 | | 1,398.44 | | |
| Hutchinson | 76.05 | 4,739.28 | 512.23 | 258.97 | 5,586.53 | 78.97 | 180.00 |
| Johnson | 236.29 | 2,100.76 | 1,117.53 | | 3,454.58 | | |
| Kansas City | 60.65 | 1,572.05 | 80.55 | | 1,713.25 | 50.17 | |
| Lamont | | 1,071.94 | 455.73 | 1,218.60 | 2,746.67 | | |
| Lincoln | 179.08 | 2,726.86 | 1,457.75 | 284.00 | 4,647.69 | | |
| Lucas | | | | | | | |
| Lyndon | 5.12 | 485.38 | 565.71 | | 1,056.21 | | |
| Natoma | | 771.14 | 825.83 | | 1,596.97 | 96.22 | |
| Osawatomie | 20.67 | 1,885.81 | 1,266.79 | 194.83 | 3,368.10 | 20.33 | 6.53 |
| Oakley | 19.36 | 2,507.87 | 2,053.56 | | 4,580.79 | 89.87 | |
| Sabetha | 255.25 | 3,625.17 | 1,445.59 | | 5,326.01 | | |
| Scott City | 1,631.26 | 516.89 | 31.05 | 505.00 | 2,684.20 | 31.05 | |
| Sharon Springs | 51.25 | 1,650.51 | 2,105.45 | 2,237.26 | 6,044.47 | | |
| St. Francis | 7.45 | 1,842.84 | 2,312.55 | 412.67 | 4,575.51 | | |
| Sylvan Grove | 53.05 | 203.90 | 382.79 | | 639.74 | | |
| Syracuse | 123.63 | 4,391.10 | 4,525.95 | 741.91 | 9,782.59 | 243.17 | 48.00 |
| Toronto | 32.69 | 731.91 | 635.92 | | 1,400.52 | 101.50 | |
| Wichita | 213.32 | 3,959.87 | 1,843.82 | 4,998.00 | 11,015.01 | 575.00 | |
| Winona | | 927.16 | 1,387.31 | | 2,314.47 | 24.00 | |
| Woodlawn | 69.48 | 224.66 | 81.30 | | 375.44 | | |
| TOTALS | 4,671.73 | 64,112.31 | 36,681.92 | 13,009.24 | 118,475.60 | 2,103.42 | 241.16 |
| Unorganized Churches | | | | | | | |
| Keystone | | 383.61 | 48.00 | | 431.61 | | |
| Lakin | | 360.33 | | 500.00 | 860.33 | | |
| Wichita People's Mission | | | | | | | |

CHURCH
TREASURER'S
REPORT

No. 2

EXPENDITURES

LOCAL CHURCH INTERESTS

DISTRICT INTERESTS

| | Pastor's Salary | Interest and Insurance | Improvements | Paid on Local Indebtedness | Evangelists and Singers | Rents | Love Offerings | Miscellaneous | Superintendent | Ministerial Tithe | District Budget | Camp and Conference | Pension Fund | District Home Missions | District Parsonage Fund | Ministerial Mid-Year Conference | Camp Grounds |
|-----------------------------|------------------|------------------------|------------------|----------------------------|-------------------------|---------------|----------------|----------------|----------------|-------------------|-----------------|---------------------|---------------|------------------------|-------------------------|---------------------------------|---------------|
| Argonia | \$1,820.00 | ... | \$384.51 | ... | \$365.62 | ... | \$87.87 | ... | 20.52 | 136.50 | 184.52 | 6.02 | ... | 204.86 | ... | ... | ... |
| Big Bow | 2,230.00 | ... | 142.98 | ... | 314.65 | ... | 26.51 | \$234.51 | 15.57 | 156.00 | 12.00 | ... | 104.00 | 151.00 | 5.00 | 5.00 | 25.00 |
| Bird City | 2,418.47 | \$99.72 | 1,045.51 | \$1052.27 | 425.00 | ... | ... | ... | 13.90 | 162.00 | 47.00 | ... | 141.00 | ... | 160.00 | ... | 25.00 |
| Brewster | 1,022.50 | ... | 1,183.76 | ... | 370.00 | ... | ... | ... | ... | 90.87 | ... | ... | ... | ... | ... | ... | ... |
| Colby | 1,820.00 | ... | 124.63 | ... | 491.89 | ... | ... | ... | 6.60 | 103.50 | 23.33 | ... | ... | 11.00 | 120.00 | ... | ... |
| Fall River | 1,019.28 | ... | 83.95 | ... | 254.99 | ... | ... | ... | 8.33 | 73.50 | 37.85 | 10.00 | ... | 12.00 | 30.00 | ... | ... |
| Fowler | 1,203.50 | 82.00 | 302.90 | ... | 323.50 | ... | ... | ... | ... | 106.27 | 23.00 | ... | 61.50 | 200.00 | 50.00 | ... | 5.00 |
| Fredonia | 1,820.00 | ... | 278.85 | ... | 580.00 | \$299.80 | ... | ... | 22.00 | 54.00 | ... | 72.00 | 82.80 | ... | ... | ... | ... |
| Garden City | 1,014.50 | ... | 59.08 | ... | 106.05 | ... | ... | ... | ... | 84.81 | 10.00 | ... | ... | 12.00 | ... | ... | ... |
| Goff | ... | ... | ... | ... | ... | ... | ... | ... | ... | ... | ... | ... | ... | ... | ... | ... | ... |
| Goodland | 2,600.00 | ... | ... | 3097.50 | 853.00 | ... | ... | ... | 21.00 | 202.50 | 65.00 | ... | ... | 195.00 | 105.00 | ... | ... |
| Humboldt | 734.30 | ... | ... | ... | 75.00 | ... | ... | ... | 1.70 | 55.06 | 15.51 | ... | 44.16 | ... | ... | ... | ... |
| Hutchinson | 2,210.00 | ... | 623.20 | ... | 369.98 | ... | ... | ... | 19.62 | 130.00 | 54.74 | 8.23 | ... | 167.00 | ... | ... | 42.00 |
| Johnson | 1,820.00 | ... | ... | ... | 657.26 | ... | ... | ... | 4.06 | 136.50 | 10.00 | 5.00 | 81.90 | 26.00 | 10.00 | ... | ... |
| Kansas City | 45.00 | 31.09 | 33.04 | 764.99 | 345.59 | ... | ... | ... | 5.00 | ... | ... | ... | ... | ... | ... | ... | ... |
| Lamont | 1,053.00 | ... | 1,114.20 | ... | 100.25 | ... | ... | ... | 5.33 | 78.00 | 14.08 | 5.00 | ... | 49.00 | ... | 3.55 | ... |
| Lincoln | 1,558.35 | ... | 170.61 | 320.34 | 507.39 | ... | ... | 294.87 | 9.25 | 118.13 | 29.00 | 25.00 | 87.45 | 235.00 | 103.00 | ... | ... |
| Lucas | ... | ... | ... | ... | ... | ... | ... | ... | ... | ... | ... | ... | ... | ... | ... | ... | ... |
| Lyndon | 485.38 | ... | 100.00 | ... | 230.69 | ... | ... | ... | 3.20 | 36.42 | ... | 10.00 | ... | ... | ... | ... | ... |
| Natoma | 588.37 | 40.50 | 271.24 | 113.00 | 211.72 | ... | 113.00 | ... | 1.98 | 43.83 | ... | 2.35 | ... | ... | ... | ... | ... |
| Osawatimie | 1,315.00 | ... | 305.56 | ... | 503.87 | ... | ... | ... | 4.33 | 86.25 | 32.00 | 22.00 | ... | 55.00 | ... | ... | ... |
| Oakley | 1,900.00 | ... | 327.60 | ... | 641.18 | ... | 95.25 | ... | ... | 142.50 | ... | ... | ... | 180.00 | 110.00 | 10.00 | ... |
| Sabetha | 1,820.00 | ... | 876.21 | ... | 451.49 | ... | 296.26 | ... | 30.10 | 126.38 | 55.20 | ... | ... | 76.00 | 54.00 | 18.00 | ... |
| Scott City | 1,385.98 | ... | ... | ... | 202.14 | ... | ... | ... | 12.97 | 87.67 | ... | ... | 72.62 | ... | ... | ... | ... |
| Sharon Springs | 885.00 | 652.68 | 775.05 | 2783.50 | 428.35 | ... | ... | ... | 28.07 | 51.75 | 36.00 | ... | ... | ... | ... | ... | ... |
| St. Francis | 1,428.06 | 62.67 | 138.92 | 350.00 | 463.91 | ... | ... | ... | 18.80 | 107.12 | 50.00 | ... | ... | 31.23 | ... | ... | ... |
| Sylvan Grove | 210.81 | ... | 72.44 | ... | 133.80 | ... | ... | ... | 5.40 | 20.50 | ... | ... | ... | ... | ... | ... | ... |
| Syracuse | 2,600.00 | ... | 1,320.65 | 275.00 | 735.37 | ... | 347.95 | 536.10 | 15.35 | 195.00 | 133.00 | 8.00 | 115.50 | 305.00 | 190.00 | ... | 200.00 |
| Toronto | 690.00 | ... | 76.96 | ... | 125.00 | ... | ... | ... | 8.31 | 52.41 | ... | ... | ... | ... | 25.00 | ... | 5.00 |
| Wichita | 2,345.00 | ... | 5,225.40 | 75.50 | 593.00 | ... | ... | ... | ... | 165.00 | 50.00 | ... | ... | 70.00 | 10.00 | ... | ... |
| Winona | 1,040.00 | ... | 324.00 | ... | 125.00 | 31.28 | ... | ... | 13.70 | 65.00 | 12.50 | ... | ... | ... | ... | ... | ... |
| Woodlawn | 225.00 | ... | ... | 50.00 | ... | ... | ... | ... | 6.30 | 14.75 | ... | ... | ... | ... | ... | ... | ... |
| TOTALS | 41,307.50 | 968.66 | 15,361.65 | 8882.10 | 10,985.69 | 331.08 | 966.84 | 1065.48 | 301.39 | 2882.29 | 984.73 | 173.60 | 790.93 | 2006.17 | 972.00 | 36.55 | 302.00 |
| Unorganized Churches | | | | | | | | | | | | | | | | | |
| Keystone | 294.33 | ... | ... | ... | ... | ... | ... | ... | ... | ... | ... | ... | ... | ... | ... | ... | ... |
| Lakin | 40.00 | ... | ... | ... | ... | ... | ... | ... | ... | ... | ... | ... | ... | ... | ... | ... | ... |
| Wichita People's Mission | ... | ... | ... | ... | ... | ... | ... | ... | ... | ... | ... | ... | ... | ... | ... | ... | ... |

27

CHURCH
TREASURER'S
REPORT
No. 3

EXPENDITURES

GENERAL CHURCH INTERESTS

Other Interests

| | Foreign Missions | Home Missions | General Administration | Sunday School Extension and Youth | Senior College | General Conference | Church Extension Loan Fund | Miscellaneous | Bible Schools | Miscellaneous | Total Expenditures | Cash on Hand |
|--------------------------|---------------------|------------------|---------------------------|---|----------------|-----------------------|----------------------------------|---------------|---------------|---------------|-----------------------|--------------|
| Argonia | \$450.74 | \$80.84 | \$122.02 | ... | ... | \$8.92 | ... | ... | \$100.26 | \$616.28 | \$4,589.88 | \$176.07 |
| Big Bow | 303.10 | 95.39 | 66.00 | ... | ... | 2.47 | ... | ... | 301.06 | 59.03 | 4,249.27 | 12.01 |
| Bird City | 55.67 | 38.19 | 95.88 | ... | ... | ... | ... | ... | 152.80 | 270.25 | 6,202.66 | 88.79 |
| Brewster | 128.88 | 17.67 | ... | \$12.00 | ... | 120.70 | ... | ... | 93.44 | 937.56 | 3,977.38 | 2.40 |
| Colby | 317.71 | 39.03 | 23.33 | 4.38 | \$13.13 | 3.51 | \$8.76 | ... | 49.94 | 135.27 | 3,296.01 | 84.35 |
| Fall River | 299.18 | 27.00 | 20.00 | 10.98 | ... | ... | ... | ... | 52.84 | 168.61 | 2,108.58 | 146.50 |
| Fowler | 264.04 | 44.52 | 5.46 | 12.86 | 4.09 | ... | ... | ... | 60.00 | 310.84 | 3,059.48 | .01 |
| Fredonia | 285.00 | 106.00 | 116.50 | ... | ... | 10.80 | ... | ... | 86.33 | 538.83 | 4,352.91 | .04 |
| Garden City | 159.92 | 10.00 | 10.00 | 2.60 | 7.49 | 1.52 | 3.75 | ... | 27.96 | 75.84 | 1,585.52 | ... |
| Goff | ... | ... | ... | ... | ... | ... | ... | ... | ... | ... | ... | ... |
| Goodland | 798.57 | 122.60 | 226.53 | ... | ... | ... | ... | ... | 134.97 | 1,795.41 | 10,217.08 | 19.47 |
| Humboldt | 49.00 | 25.51 | 15.51 | 6.25 | 11.25 | 2.55 | 7.50 | ... | 21.00 | 221.10 | 1,285.40 | 113.04 |
| Hutchinson | 469.69 | 123.23 | 54.74 | ... | ... | ... | ... | ... | 118.10 | 929.14 | 5,319.67 | 266.86 |
| Johnson | 109.40 | 32.85 | 10.00 | ... | ... | 1.50 | ... | ... | 47.00 | 418.95 | 3,370.42 | 84.16 |
| Kansas City | ... | ... | ... | ... | ... | ... | ... | ... | ... | 214.35 | 1,439.06 | 274.19 |
| Lamont | 63.52 | 28.00 | 14.00 | 3.50 | ... | ... | 10.50 | ... | 54.24 | 68.70 | 2,664.87 | 81.80 |
| Lincoln | 257.75 | 73.52 | 29.00 | 7.25 | 21.75 | ... | 14.50 | ... | 56.45 | ... | 3,918.61 | 729.08 |
| Lucas | ... | ... | ... | ... | ... | ... | ... | ... | ... | ... | ... | ... |
| Lyndon | 25.00 | 11.00 | 5.00 | ... | ... | ... | ... | ... | 26.99 | 119.41 | 1,053.09 | 3.12 |
| Natoma | 79.23 | 23.57 | ... | 1.87 | ... | ... | ... | ... | 32.56 | 56.29 | 1,579.51 | 17.46 |
| Osawatomie | 91.05 | 32.00 | 32.00 | 8.00 | 24.00 | 4.80 | 16.00 | ... | 60.06 | 719.70 | 3,311.62 | 56.48 |
| Oakley | 351.27 | 49.73 | 27.00 | 6.75 | 20.25 | ... | 13.50 | ... | 483.79 | 128.33 | 4,487.15 | 93.64 |
| Sabetha | 355.85 | 55.80 | 54.80 | 14.48 | ... | ... | 45.87 | ... | 188.95 | 539.21 | 5,058.60 | 267.41 |
| Scott City | 115.41 | ... | 38.24 | 31.05 | ... | ... | ... | ... | 24.46 | 208.66 | 2,179.20 | 505.00 |
| Sharon Springs | 37.27 | 18.00 | ... | ... | ... | ... | ... | ... | 48.56 | 239.94 | 5,984.17 | 60.30 |
| St. Francis | 255.15 | 34.60 | 15.00 | ... | ... | ... | ... | ... | 54.86 | 1,564.71 | 4,575.03 | .48 |
| Sylvan Grove | 24.01 | 12.00 | 2.00 | ... | ... | 5.00 | ... | ... | 3.00 | 85.94 | 574.90 | 64.84 |
| Syracuse | 728.20 | 106.25 | 24.00 | ... | ... | ... | ... | ... | 1,489.33 | 441.65 | 9,766.35 | 16.24 |
| Toronto | 81.10 | 22.00 | 46.32 | ... | ... | ... | ... | ... | 21.85 | 116.04 | 1,279.99 | 120.53 |
| Wichita | 200.00 | 69.04 | 50.00 | 20.00 | 25.00 | ... | ... | ... | 50.81 | 1,825.53 | 10,774.28 | 240.73 |
| Winona | 78.96 | 5.00 | 1.50 | 5.00 | ... | ... | ... | ... | 65.00 | 479.91 | 2,272.93 | 41.54 |
| Woodlawn | 11.08 | ... | ... | ... | ... | ... | ... | ... | ... | 63.21 | 370.34 | 5.10 |
| TOTALS | 6445.75 | 1303.34 | 1104.83 | 146.97 | 126.96 | 161.77 | 120.38 | 10.00 | 3,906.61 | 13,348.69 | 114,903.96 | 3,571.64 |
| Unorganized Churches | ... | ... | ... | ... | ... | ... | ... | ... | ... | 14.50 | 308.83 | 122.78 |
| Keystone | ... | ... | ... | ... | ... | ... | ... | ... | ... | 718.16 | 758.16 | 102.17 |
| Lakin | ... | ... | ... | ... | ... | ... | ... | ... | ... | ... | ... | ... |
| Wichita People's Mission | ... | ... | ... | ... | ... | ... | ... | ... | ... | ... | ... | ... |

28

| | |
|----------------------|--|
| Cash Brought Forward | |
| Regular Offerings | |
| Birthday Offering | |
| Special Offering | |
| Total Receipts | |

| | | | | |
|------------|-----------------------------------|---------------|--------------------|--------------|
| Literature | Transferred to Church Treasury | Miscellaneous | Total Expenditures | Cash on Hand |
| Equipment | District Budget General Budget | | | |

[illegible]

YOUNG PEOPLE'S SOCIETY REPORT

STATISTICAL REPORT

FINANCIAL REPORT

| | Members Last Report | PRESENT MEMBERSHIP | | | | | | Average Attendance | | RECEIPTS | | | EXPENDITURES | | | | | |
|--------------------------|------------------------|--------------------|-----------|----------|------|------|---------------------|-----------------------|----------------|----------------|-------------------------|----------------------|-------------------|--------------------------------------|---------------------------------------|--------------------------------------|---------------|-----------------|
| | | Active | Associate | Honorary | Gain | Loss | Total Membership | No. Meetings Held | Last Report | This Report | Cash Brought Forward | Offering Received | Total Receipts | Transferred to Church Treasury | Transferred for District Budget | Transferred for General Budget | Miscellaneous | Cash on Hand |
| Argonia | .. | .. | .. | .. | .. | .. | .. | .. | .. | .. | .. | .. | .. | .. | .. | .. | .. | .. |
| Big Bow | .. | .. | .. | .. | .. | .. | .. | .. | .. | .. | .. | .. | .. | .. | .. | .. | .. | .. |
| Bird City | .. | .. | .. | .. | .. | .. | .. | .. | .. | .. | .. | .. | .. | .. | .. | .. | .. | .. |
| Brewster | .. | .. | .. | .. | .. | .. | .. | .. | .. | .. | .. | .. | .. | .. | .. | .. | .. | .. |
| Colby | .. | .. | .. | .. | .. | .. | .. | .. | .. | .. | .. | .. | .. | .. | .. | .. | .. | .. |
| Fall River | .. | .. | .. | .. | .. | .. | .. | .. | .. | .. | .. | .. | .. | .. | .. | .. | .. | .. |
| Fowler | 11 | 9 | 2 | 1 | 1 | .. | 12 | 34 | 8 | 10 | \$21.31 | \$66.63 | \$87.94 | .. | .. | .. | .. | \$27.69 |
| Fredonia | 22 | 14 | 3 | 11 | 6 | .. | 28 | 48 | .. | .. | .28 | 82.10 | 82.38 | .. | .. | .. | \$71.36 | 11.02 |
| Garden City | .. | .. | .. | .. | .. | .. | .. | .. | .. | .. | .. | .. | .. | .. | .. | .. | .. | .. |
| Goff | .. | .. | .. | .. | .. | .. | .. | .. | .. | .. | .. | .. | .. | .. | .. | .. | .. | .. |
| Goodland | 25 | 22 | 3 | 3 | 3 | .. | 28 | 48 | .. | .. | 27.97 | 65.32 | 93.29 | .. | .. | .. | 65.53 | 27.76 |
| Humboldt | .. | .. | .. | .. | .. | .. | .. | .. | .. | .. | .. | .. | .. | .. | .. | .. | .. | .. |
| Hutchinson | 43 | 17 | 2 | 22 | .. | 2 | 41 | 50 | 43 | 48 | 14.17 | 247.32 | 261.49 | .. | .. | .. | 227.58 | 33.91 |
| Johnson | .. | .. | .. | .. | .. | .. | .. | .. | .. | .. | .. | .. | .. | .. | .. | .. | .. | .. |
| Kansas City | .. | .. | .. | .. | .. | .. | .. | .. | .. | .. | .. | .. | .. | .. | .. | .. | .. | .. |
| Lamont | .. | .. | .. | .. | .. | .. | .. | .. | .. | .. | .. | .. | .. | .. | .. | .. | .. | .. |
| Lincoln | .. | .. | .. | .. | .. | .. | .. | .. | .. | .. | .. | .. | .. | .. | .. | .. | .. | .. |
| Lucas | .. | .. | .. | .. | .. | .. | .. | .. | .. | .. | .. | .. | .. | .. | .. | .. | .. | .. |
| Lyndon | .. | .. | .. | .. | .. | .. | .. | .. | .. | .. | .. | .. | .. | .. | .. | .. | .. | .. |
| Natoma | .. | .. | .. | .. | .. | .. | .. | .. | .. | .. | .. | .. | .. | .. | .. | .. | .. | .. |
| Osawatomie | .. | .. | .. | .. | .. | .. | .. | .. | .. | .. | .. | .. | .. | .. | .. | .. | .. | .. |
| Oakley | 18 | 18 | .. | 12 | 12 | .. | 30 | 50 | .. | .. | 15.94 | 81.99 | 97.93 | .. | .. | .. | .. | 97.93 |
| Sabetha | .. | .. | .. | .. | .. | .. | .. | .. | .. | .. | .. | .. | .. | .. | .. | .. | .. | .. |
| Scott City | .. | .. | .. | .. | .. | .. | .. | .. | .. | .. | .. | .. | .. | .. | .. | .. | .. | .. |
| Sharon Springs | .. | .. | .. | .. | .. | .. | .. | .. | .. | .. | .. | .. | .. | .. | .. | .. | .. | .. |
| St. Francis | 38 | 21 | 3 | 17 | 3 | .. | 41 | 30 | .. | 30 | 6.24 | 3.87 | 10.11 | .. | .. | .. | .. | 10.11 |
| Sylvan Grove | 13 | 12 | 2 | 3 | 4 | .. | 17 | .. | 20 | 11 | 16.93 | 22.93 | .. | .. | .. | .. | 17.25 | 5.68 |
| Syracuse | .. | .. | .. | .. | .. | .. | .. | .. | .. | .. | .. | .. | .. | .. | .. | .. | .. | .. |
| Toronto | .. | .. | .. | .. | .. | .. | .. | .. | .. | .. | .. | .. | .. | .. | .. | .. | .. | .. |
| Wichita | 40 | 14 | 10 | 14 | .. | 2 | 38 | .. | 25 | 22 | 24.60 | 45.45 | 70.05 | .. | .. | .. | 12.00 | 58.05 |
| Winona | .. | .. | .. | .. | .. | .. | .. | .. | .. | .. | .. | .. | .. | .. | .. | .. | .. | .. |
| Woodlawn | .. | .. | .. | .. | .. | .. | .. | .. | .. | .. | .. | .. | .. | .. | .. | .. | .. | .. |
| TOTALS | 210 | 127 | 25 | 83 | 29 | 4 | 235 | 260 | 96 | 121 | 116.51 | 609.61 | 726.12 | .. | .. | .. | 166.14 | 272.15 |
| Unorganized Churches | .. | .. | .. | .. | .. | .. | .. | .. | .. | .. | .. | .. | .. | .. | .. | .. | .. | .. |
| Keystone | .. | .. | .. | .. | .. | .. | .. | .. | .. | .. | .. | .. | .. | .. | .. | .. | .. | .. |
| Lakin | .. | .. | .. | .. | .. | .. | .. | .. | .. | .. | .. | .. | .. | .. | .. | .. | .. | .. |
| Wichita People's Mission | .. | .. | .. | .. | .. | .. | .. | .. | .. | .. | .. | .. | .. | .. | .. | .. | .. | .. |

EXPENDITURES

| OF TOTALS BY DEPARTMENTS | | | | | | | | | |
|--------------------------|----------------|---------------|------------------------|-------------|----------------|---------------|------------------------|-------------|---------------------------------|
| | Regular Church | Sunday School | Young People's Society | Grand Total | Regular Church | Sunday School | Young People's Society | Grand Total | Cash on Hand in all Departments |
| Argonia | \$4,765.95 | | | \$4,765.95 | \$4,589.88 | | | \$4,589.88 | \$176.07 |
| Big Bow | 4,261.28 | \$510.60 | | 4,771.88 | 4,249.27 | \$478.23 | | 4,727.50 | 44.38 |
| Bird City | 6,291.45 | 243.39 | | 6,534.84 | 6,202.66 | 237.29 | | 6,439.95 | 94.89 |
| Brewster | 3,979.78 | 203.76 | | 4,183.54 | 3,977.38 | 200.54 | | 4,177.92 | 5.62 |
| Colby | 3,380.36 | 492.99 | | 3,873.35 | 3,296.01 | 211.27 | | 3,507.28 | 366.07 |
| Fall River | 2,255.08 | 221.39 | | 2,476.47 | 2,108.58 | 218.39 | | 2,326.97 | 149.50 |
| Fowler | 3,059.49 | 173.02 | \$87.94 | 3,240.45 | 3,059.48 | 162.26 | \$60.25 | 3,281.99 | 38.46 |
| Fredonia | 4,352.95 | 699.11 | 82.38 | 5,134.44 | 4,352.91 | 648.59 | 71.36 | 5,072.86 | 61.58 |
| Garden City | 1,585.52 | 239.43 | | 1,824.95 | 1,585.52 | 218.22 | | 1,803.74 | 21.21 |
| Goff | | | | | | | | | |
| Goodland | 10,236.55 | 804.11 | 93.29 | 11,133.95 | 10,217.08 | 681.37 | 65.53 | 10,963.98 | 169.97 |
| Humboldt | 1,398.44 | 65.19 | | 1,463.63 | 1,285.40 | 62.20 | | 1,347.60 | 116.03 |
| Hutchinson | 5,586.53 | 576.13 | 261.49 | 6,424.15 | 5,319.67 | 552.96 | 227.58 | 6,100.21 | 323.94 |
| Johnson | 3,454.58 | 409.04 | | 3,863.62 | 3,370.42 | 400.86 | | 3,771.28 | 92.34 |
| Kansas City | 1,713.25 | 86.91 | | 1,800.16 | 1,439.06 | 73.25 | | 1,512.31 | 287.85 |
| Lamont | 2,746.67 | 208.40 | | 2,955.07 | 2,664.87 | 199.14 | | 2,864.01 | 91.06 |
| Lincoln | 4,647.69 | 297.00 | | 4,944.69 | 3,918.61 | 165.20 | | 4,083.81 | 860.88 |
| Lucas | | | | | | | | | |
| Lyndon | 1,056.21 | 140.21 | | 1,196.42 | 1,053.09 | 137.74 | | 1,190.93 | 5.59 |
| Natoma | 1,596.97 | 177.47 | | 1,774.44 | 1,579.51 | 177.47 | | 1,756.98 | 17.46 |
| Osawatimie | 3,368.10 | 305.22 | | 3,673.32 | 3,311.62 | 295.50 | | 3,607.12 | 66.20 |
| Oakley | 4,580.79 | 207.74 | 97.93 | 4,886.46 | 4,487.15 | 199.43 | | 4,686.58 | 199.88 |
| Sabetha | 5,326.01 | 514.75 | | 5,840.76 | 5,058.60 | 441.55 | | 5,500.15 | 340.61 |
| Scott City | 2,684.20 | 267.88 | | 2,952.08 | 2,179.20 | 248.15 | | 2,427.35 | 524.73 |
| Sharon Springs | 6,044.47 | 196.79 | | 6,241.26 | 5,984.17 | 161.51 | | 6,145.68 | 95.58 |
| St. Francis | 4,575.51 | 373.99 | 10.11 | 4,959.61 | 4,575.03 | 363.87 | | 4,938.90 | 20.71 |
| Sylvan Grove | 639.74 | 78.95 | 22.93 | 741.62 | 574.90 | 53.29 | 17.25 | 645.44 | 96.18 |
| Syracuse | 9,782.59 | 777.94 | | 10,560.53 | 9,766.35 | 777.94 | | 10,544.29 | 16.24 |
| Toronto | 1,400.52 | 183.20 | | 1,583.72 | 1,279.99 | 164.73 | | 1,444.72 | 139.00 |
| Wichita | 11,015.01 | 957.91 | 70.05 | 12,042.97 | 10,774.28 | 924.22 | 12.00 | 11,710.50 | 332.47 |
| Winona | 2,314.47 | 129.82 | | 2,444.29 | 2,272.93 | 90.43 | | 2,363.36 | 80.93 |
| Woodlawn | 375.44 | 101.88 | | 477.32 | 370.34 | 81.91 | | 452.25 | 25.07 |
| TOTALS | 118,475.60 | 9,642.42 | 726.12 | 128,845.94 | 114,903.96 | 8,627.51 | 453.97 | 123,985.44 | 4,860.50 |
| Unorganized Churches | | | | | | | | | |
| Keystone | | | | | | | | | |
| Lakin | | | | | | | | | |
| Wichita People's Mission | | | | | | | | | |

**PROPERTY
STATEMENT**
V A L U E
D E B T
E Q U I T Y

| | Church | Parsonage | Total | Church | Parsonage | Total | Church | Parsonage | Total |
|--------------------------------|------------|------------|------------|----------|-----------|----------|------------|------------|------------|
| Argonia | \$3,000.00 | \$2,000.00 | \$5,000.00 | | | | \$3,000.00 | \$2,000.00 | \$5,000.00 |
| Big Bow | 3,000.00 | 15,000.00 | 18,000.00 | | | | 3,000.00 | 15,000.00 | 18,000.00 |
| Bird City | 5,000.00 | 5,000.00 | 10,000.00 | | | | 5,000.00 | 5,000.00 | 10,000.00 |
| Brewster | 1,000.00 | 3,000.00 | 4,000.00 | | | | 1,000.00 | 3,000.00 | 4,000.00 |
| Colby | 2,000.00 | 2,500.00 | 4,500.00 | | | | 2,000.00 | 2,500.00 | 4,500.00 |
| Fall River | 2,000.00 | 1,200.00 | 3,200.00 | | | | 2,000.00 | 1,200.00 | 3,200.00 |
| Fowler | 2,000.00 | 1,200.00 | 3,200.00 | | | | 2,000.00 | 1,200.00 | 3,200.00 |
| Fredonia | 10,000.00 | 5,000.00 | 15,000.00 | | | | 10,000.00 | 5,000.00 | 15,000.00 |
| Garden City | 5,000.00 | 6,000.00 | 11,000.00 | | | | 5,000.00 | 6,000.00 | 11,000.00 |
| Goff | | | | | | | | | |
| Goodland | 20,000.00 | 6,000.00 | 26,000.00 | | | | 20,000.00 | 6,000.00 | 26,000.00 |
| Humboldt | 2,000.00 | 1,500.00 | 3,500.00 | | | | 2,000.00 | 1,500.00 | 3,500.00 |
| Hutchinson | 5,000.00 | 5,000.00 | 10,000.00 | | | | 5,000.00 | 5,000.00 | 10,000.00 |
| Johnson | 3,000.00 | 2,500.00 | 5,500.00 | | | | 3,000.00 | 2,500.00 | 5,500.00 |
| Kansas City | 3,000.00 | | 3,000.00 | \$750.00 | | \$750.00 | 2,250.00 | | 2,250.00 |
| Lamont | 1,000.00 | 3,000.00 | 4,000.00 | | | | 1,000.00 | 3,000.00 | 4,000.00 |
| Lincoln | 3,000.00 | 1,500.00 | 4,500.00 | | | | 3,000.00 | 1,500.00 | 4,500.00 |
| Lucas | | | | | | | | | |
| Lyndon | 3,000.00 | 1,500.00 | 4,500.00 | | | | 3,000.00 | 1,500.00 | 4,500.00 |
| Natoma | 3,000.00 | 4,000.00 | 7,000.00 | | 600.00 | 600.00 | 3,000.00 | 3,400.00 | 6,400.00 |
| Osawatimie | 2,500.00 | 3,500.00 | 6,000.00 | | | | 2,500.00 | 3,500.00 | 6,000.00 |
| Oakley | 3,500.00 | 2,250.00 | 5,750.00 | | | | 3,500.00 | 2,250.00 | 5,750.00 |
| Sabetha | 5,000.00 | 5,000.00 | 10,000.00 | | | | 5,000.00 | 5,000.00 | 10,000.00 |
| Scott City | 2,000.00 | 3,000.00 | 5,000.00 | | | | 2,000.00 | 3,000.00 | 5,000.00 |
| Sharon Springs | 10,000.00 | 15,000.00 | 25,000.00 | | | | 10,000.00 | 15,000.00 | 25,000.00 |
| St. Francis | 4,000.00 | 4,000.00 | 8,000.00 | | 800.00 | 800.00 | 4,000.00 | 3,200.00 | 7,200.00 |
| Sylvan Grove | 2,800.00 | 200.00 | 3,000.00 | | | | 2,800.00 | 200.00 | 3,000.00 |
| Syracuse | 16,500.00 | 8,500.00 | 25,000.00 | | | | 16,500.00 | 8,500.00 | 25,000.00 |
| Toronto | 1,800.00 | 1,800.00 | 3,600.00 | | | | 1,800.00 | 1,800.00 | 3,600.00 |
| Wichita | 8,000.00 | 7,000.00 | 15,000.00 | 2,000.00 | 2,000.00 | 4,000.00 | 6,000.00 | 5,000.00 | 11,000.00 |
| Winona | 3,000.00 | 8,000.00 | 11,000.00 | | | | 3,000.00 | 8,000.00 | 11,000.00 |
| Woodlawn | 2,000.00 | 2,000.00 | 4,000.00 | | 120.00 | 120.00 | 2,000.00 | 1,820.00 | 3,820.00 |
| TOTALS | 137,100.00 | 126,150.00 | 263,250.00 | 2,750.00 | 3,520.00 | 6,270.00 | 134,350.00 | 122,570.00 | 256,920.00 |
| Unorganized Churches | | | | | | | | | |
| Keystone | | | | | | | | | |
| Lakin | | | | | | | | | |
| Wichita People's Mission | | | | | | | | | |

DISTRICT CAMP

HUTCHINSON, KANSAS

JULY 25 TO AUGUST 3, 1952

WORKERS

| | | |
|-------------------|-----------|------------|
| Rev. P. W. Thomas | | Evangelist |
| Rev. Wm. H. Pratt | | Evangelist |
| Mr. Athol McComb | | Singer |

CONFERENCE

HUTCHINSON, KANSAS

AUGUST 4, 1952

Colorado Springs Bible College

Regional School of the Pilgrim Holiness Church

540 West Monument
Colorado Springs, Colorado

HIGH SCHOOL AND JUNIOR COLLEGE
COURSES IN THEOLOGY

ROBERT H. HECKERT, PRESIDENT