

Shelf

Kansas District

PILGRIM HOLINESS CHURCH



**Fifty-Fourth
ANNUAL CONFERENCE**

1967

CONFERENCE HELD AT HUTCHINSON, KANSAS

AUGUST 7, 1967

THERE MUST
BE A REASON

WHY
SO MANY
PILGRIM YOUTH
LOOK TO

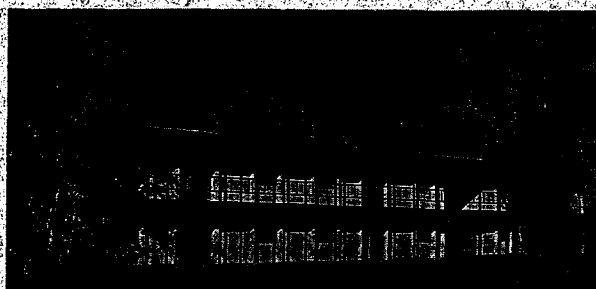
CPC

FOR
CHRISTIAN
EDUCATION

LOCATED
In The  Of The Nation

BARTLESVILLE

OKLAHOMA



NEW WERT MEN'S RESIDENCE HALL

CPC Offers Young People Distinct Advantages

- A Spiritual Atmosphere
- Strong Scholastic Program
- Wide Choice of Courses
- Costs Within The Reach Of All
- Well Located Campus

PREPARING

- Pastors • Missionaries • Evangelists • Teachers

ALSO OFFERING COURSES IN

- Sacred Music • Science and Math • Social Sciences
- Other Liberal Arts Fields

Write For Complete Information
CENTRAL PILGRIM COLLEGE

DIRECTOR OF ADMISSION
BARTLESVILLE OKLAHOMA 74103

FIFTY-FOURTH

ANNUAL CONFERENCE

of the

Kansas District

Pilgrim Holiness Church

CONFERENCE HELD AT

HUTCHINSON, KANSAS

August 7, 1967 — Price 50 cents

DISTRICT BULLETIN BOARD

SEPTEMBER	District Home Missionary Offering
OCTOBER, First Sunday	Rally Day Offering for General Sunday School and Youth Work.
NOVEMBER	Self Denial Offering for World Missions
MARCH 19-21, 1968	Joint Ministerial Convention, Rev. P. W. Thomas, speaker
APRIL 14 - Easter	General Church Extension Offering
MAY	Central Pilgrim College Offering
JUNE 25 - JULY 1	Pilgrim Holiness International Conference and the Merging Conference, Anderson, Ind.
JULY	District Camp Meeting Offering
JULY 26 - AUG. 4	Camp Meeting
AUGUST 5	District Conference of the Wesleyan Church

1967 OFFICIAL DIRECTORY

DISTRICT SUPERINTENDENT

Rev. Howard K. Busby—Ph. 316-427-4131 Lamont, Kansas 66855

ASSISTANT SUPERINTENDENT

L. E. Schendel—Ph. 913-RE 4-2777 Box 282, Bird City, Kansas 67731

SECRETARY

Wayne R. Plummer—Ph. 316-HY 5-3120 Box 66, Big Bow, Kansas 67832

TREASURER

Lorren D. Elliott—Ph. 913-LA 4-4250 Box 273, Lincoln, Kansas 67455

ADVISORY COUNCIL MEMBERS

O. M. Allen—Ph. 913-OR 2-3728 221 Edgerton, Oakley, Kansas 67748

Francis M. Hobbs—Ph. 913-CE 4-6306 300 Roosevelt, Topeka, Kansas 66606

E. W. Burton—Ph. 316-GY 2-2470 Box 457, Johnson, Kansas 67855

MISSIONARY OFFICERS

Mrs. H. L. Solter, President 217 E. 10th, Goodland, Kansas 67735

Mrs. Paul Jones, Secretary-Treasurer Kendall, Kansas 67857

Mrs. Ruth Hogarth 1104 W. 2nd, Wichita, Kansas 67200

Mrs. B. F. Ireland P. O. Box 273, Fowler, Kansas 67844

Mrs. Oliver Leatherman Box 236, Toronto, Kansas 66777

YOUTH OFFICERS

Garry D. Plummer, President—

Ph 913-FE 2-2936 Box 245, St. Francis, Kansas 67756

Wendell Rovenstine, Vice-Pres.—Ph 913-TA 3-4384 Salina, Kansas 67401

O. M. Allen, Secretary—Ph. 913-OR 2-3728 Oakley, Kansas 67748

Daniel D. Busby, Treasurer—Ph. 913 COLfax 2-1447

..... 2404 West 38th St., Kansas City, Kansas 66103

OTHER OFFICES

General Superintendent, J. D. Abbott, 230 East Ohio St., Indianapolis,
..... Indiana 46204

Zone College, Central Pilgrim College, Rev. N. N. Bonner, President,
..... Old Tulsa Road, Bartlesville, Oklahoma 74003

DISTRICT BOARDS AND COMMITTEES

EXAMINING BOARD

Ray Gilbert (67-70) 605 Oregon, Sabetha, Kansas 66534

Claude Overholt (66-69) Secretary 1802 N. Waco, Wichita, Kansas 67203

H. L. Solter (65-68) Chairman 217 E. 10th, Goodland, Kansas 67735

EDUCATIONAL BOARD

Carl Lewis (67-70, 3rd year) Box 381, Lyndon, Kansas 66451

Dean Mitchener (66-69, 1st year) Secy., 2146 S. Market, Wichita, Kansas 67211

J. A. Bushman (65-68, 2nd year) Chairman Argonia, Kansas 67004

TRUSTEES

C. R. Moffett (67-70)—Ph. 913-RE 4-2716 Bird City, Kansas 67731

Calvin Mueller (66-69)—Ph. 316-384-5496 Kendall, Kansas 67857

Roger C. Jones (65-68)—Ph 316-HY 5-3191 R. R. 1, Johnson, Kansas 67855

SUNDAY SCHOOL BOARD

E. K. Purcell, Pro. Sec'y.—316-DR 8-3743, .. 802 N. 7th, Fredonia, Kansas 66736

Virgil Hogarth (67-70)—316-AM 7-9822 .. 1104 W. 2nd St., Wichita, Kansas 67200

John Rovenstine (66-69)—913-674-5411 .. R. R. 1, Box 4, Hill City, Kansas 67642

O. M. Allen (65-68) 913-OR 2-3728 221 Edgerton, Oakley, Kansas 67748

(Continue on next page, please)

DISTRICT PAPER

Howard K. Busby, Editor—Ph. 316-427-4131 Lamont, Kansas 66855
 Carl Lewis, Managing Editor—Ph. 913-828-4937, Box 381, Lyndon, Kansas 66451

1967 COMMITTEE APPOINTMENTS

Ways and Means—Lorren D. Elliott, Chairman, Kenneth Owen, E. K. Purcell, Robert H. Heckart, Chester Mueller.
 Resolutions—E. W. Burton, Chairman, Dean Mitchener, Jerald Bushman, Ray Gilbert, Wendell Rovenstine.
 Auditing—June Mitchener, Ruby Lewis.
 Reception—John Rovenstine, Earl Bell.
 Memoirs—Billie Lou Spellman, Hazel Leatherman.
 Statistical—Wayne R. Plummer, Chairman, Carl Lewis, Daniel D. Busby, Garry D. Plummer.
 Camp Publicity—Francis Aeschliman, Thomas E. Aslin.

MINISTERIAL CONVENTION

Robert H. Heckart, Chairman, Wayne R. Plummer, O. M. Allen.

Camp Meeting Board

The District Council

Ordination

The District Council

Pilgrim Evangelical Leadership Training Director

Ray Gilbert Sabetha, Kansas 66534

Christian Youth Crusade Director

John Rovenstine Hill City, Kansas 67642

DELEGATES TO THE INTERNATIONAL CONFERENCE PILGRIM HOLINESS CHURCH

Ministerial

Howard K. Busby—General Board
 L. E. Schendel—Asst. Dist. Supt.
 Wayne R. Plummer
 Francis M. Hobbs
 Lorren D. Elliott

Ministerial Alternates

O. M. Allen
 Chester Mueller

Laymen

Calvin Mueller
 Roger C. Jones
 C. R. Moffett
 Carl Dillon

Laymen Alternates

Myrl Fox
 Gerald Berggren
 LeRoy John

Equalization of Carfare Committee—Daniel D. Busby

DELEGATES TO THE MERGING CONFERENCE

Ministerial

Howard K. Busby—General Board
 Wayne R. Plummer
 L. E. Schendel
 Francis M. Hobbs

Ministerial Alternates

Lorren D. Elliott
 O. M. Allen
 Chester Mueller

Laymen

Calvin Mueller
 Roger C. Jones
 C. R. Moffett
 Carl Dillon

Laymen Alternates

Myrl Fox
 Gerald Berggren
 LeRoy John

Equalization of carfare Committee—Daniel D. Busby

ORDINATION SERVICE

A very impressive Ordination Service was held in the Pilgrim Holiness Tabernacle in Hutchinson, Kansas Sunday, August 6, 1967 at 9:00 a. m.

The service was opened by singing "A Charge to Keep I Have" led by Rev. H. L. Solter with Rev. J. Orvan Keller at the organ.

Rev. L. E. Schendel led in prayer.

Rev. Solter led in the singing of "Rock of Ages".

Appropriate portions of Scripture were read from First and Second Timothy and Titus by Rev. Wayne R. Plummer, Rev. Lorren D. Elliott, and Rev. Howard K. Busby.

Our District Superintendent, Rev. H. K. Busby presented the candidate for ordination, Rev. Garry D. Plummer, to the Rev. J. D. Abbott, our General Superintendent, who gave a challenging and inspiring message from Acts 20:13-27. Rev. Abbott noted that Paul in this Scripture made reference to—

Humble Service

Tender hearted Service

Conscientious Service

Resigned Service

A self-forgetful Service

A Fearless Service

After the prayer of consecration and the laying on of hands, Rev. J. D. Abbott completed the charge. The ordained was then congratulated and wished the continued blessings of God upon his life and ministry.

CHURCHES AND THEIR PASTORS

Argonia—316-HE 5-6721, Box 154.....	J. A. Bushman
Arlington—Murdock, Kansas.....	John Hirt 67111
Big Bow—316-HY 5-3120.....	Wayne R. Plummer 67832
Bird City—913-RE 4-2777, Box 282.....	L. E. Schendel 67731
Brewster—Winona, Kansas.....	Rev. and Mrs. J. Orvan Keller
Colby—913-HO 2-2188, 650 S. School.....	To be Supplied
El Dorado—316-DA 1-1439, Box 217, 804 S. Summit.....	David Moore 67042
Fall River—Phone 658-2301 Box 128.....	Florence Steward
Fowler—316-MI 6-5227, P. O. Box 273.....	B. F. Ireland 67844
Fredonia—316-DR 8-3743, 802 N. 7th.....	E. K. Purcell 66736
Garden City—316-BR 6-3892, 1409 "A" St.	Thomas E. Aslin 67846
Goodland—913-TW 9-5150, 217 E. 10th.....	Rev. and Mrs. H. L. Solter 67735
Hill City—913-674-5411, R. R. 1, Box 4.....	John Rovenstine 67642
*Howard—	Wayne Ware 67349
Humboldt—316-GR 3-2174, 510 Bridge St.	To be Supplied
Hutchinson—316-MO 3-3602, 126 W. 7th	Francis Aeschliman 67501
Iola—316-EN 5-5269, 521 N. St., Box 43.....	Earl E. Bell 66749
Johnson—316-GY 2-2470, Box 457.....	E. W. Burton 67855
Lakin—316-EL 5-6293, Box 72.....	Chester Mueller 67860
Lamont—801 Cherokee, Bartlesville, Okla.....	Eldon Fry 66855
Lincoln—913-LA 4-4250, 307 E. Lincoln, Box 273.....	L. D. Elliott 67455
Lyndon—913-828-4937, Box 381.....	Carl Lewis 66451
Oakley—913-OR 2-3728, 221 Edgerton.....	O. M. Allen 67748
Osawatomie—913-PL 5-3453, 406 4th St.	O. James Cook 66064
Sabetha—913-AV 4-3345, 605 Oregon.....	Ray Gilbert 66534
Salina—913-TA 3-4384, 1839 Haskett.....	Wendell Rovenstine 67401
Scott City—316-TR 2-3612, 208 W. 3rd.....	Kenneth Owen 67871
Sharon Springs—913-852-4961, Box 428	Thomas Bocox 67758
St. Francis—913-FE 2-2936, 209 N. Quincy, Box 245....	Garry D. Plummer 67756
Syracuse—316-384-5161, 109 E. Ave. C.....	Robert H. Heckart 67878
*Topeka—913-CE 4-6306, 300 Roosevelt.....	Francis M. Hobbs 66606
Toronto—316-637-2724, Box 236.....	Oliver Leatherman 66777
Wichita Bethel—316-WH 2-2416, 742 N. Beebe.....	F. M. Eichelberger 67212
(Church at 5800 W. Central)	
Wichita First—316-AM 7-9822, 1104 W. 2nd St.	Virgil Hogarth 67211
Wichita Grace—316-AM 4-3116, 1802 N. Waco.....	Claude Overholt 67203
Wichita Trinity—316-AM 2-3909, 2146 S. Market	Dean Mitchener 67211
(Church at 2153 S. Market)	
Winona—913-TI 6-3140, Box 241.....	Rev. and Mrs. J. Orvan Keller 67764

* Unorganized

MINISTERIAL CLASSIFICATION

DIRECTORY

ACTIVE ORDAINED MINISTERS

Pastoral Service

	Aeschliman, Francis,	1107 E. 5th, Hutchinson, Kansas
1959	Allen, O. M.—Ph. OR 2-3728	221 Edgerton, Oakley, Kansas
1933	Aslin, Thomas E.—Ph. BR 6-3892	1409 "A" St., Garden City, Kansas
1963	Bell, Earl E.—Ph. EN 5-5269	521 N. St., Box 43, Iola, Kansas
1936	Burton, E. W.—Ph. GY 2-2470	Johnson, Kansas
1956	Bushman, J. A.—Ph. HE 5-6721	Argonia, Kansas
1938	Campbell, Ruth—Ph. GR 3-2174	510 Bridge, Humboldt, Kansas
1946	Cook, O. James—Ph. PL 5-3453	406 Fourth St., Osawatimie, Kansas
1943	Dowty, Naaman—Ph. AM 4-5889	204 N. Martinson, Wichita, Kansas
1945	Eichelberger, F. M.—Ph. WH 2-2416	742 N. Beebe, Wichita, Kansas
1959	Elkinton, William	Box 3-124, Anchorage, Alaska
1950	Elliott, L. D.—Ph. LA 4-4250	307 E. Lincoln, Lincoln, Kansas
1946	Gilbert, Ray—Ph. AV 4-3345	605 Oregon, Sabetha, Kansas
1923	Heckart, Robert H.—Ph. 384-5161	109 E. Ave. C, Syracuse, Kansas
1948	Hobbs, Francis M.—Ph. CE 4-6306	300 Roosevelt, Topeka, Kansas
1954	Hogarth, Virgil L.—Ph. AM 7-9822	1104 W. 2nd St., Wichita, Kansas
1966	Hyde, Daniel M.	Box 693, Georgetown, Guyana
1939	Ireland, B. F.—Ph. MI 6-5227	Fowler, Kansas
1924	Keller, J. Orvan	Winona, Kansas
1942	Keller, Mrs. J. Orvan	Winona, Kansas
1959	Leatherman, Oliver—Ph. 637-2724	Box 236, Toronto, Kansas
1954	Lewis, Carl—Ph. 828-4937	Lyndon, Kansas
1959	Mitchener, Dean—Ph. AM 2-3909	2146 S. Market, Wichita, Kansas
1962	Mueller, Chester—Ph. EL 5-6293	Box 72, Lakin, Kansas
1951	Overholt, Claude—Ph. AM 4-3116	1802 N. Waco, Wichita, Kansas
1967	Plummer, Garry D.—Ph. FE 2-2936	Box 245, St. Francis, Kansas
1935	Plummer, Wayne R.—Ph. HY 5-3120	Big Bow, Kansas
	Purcell, E. K.—Ph. DR 8-3743	802 N. 7th, Fredonia, Kansas
1962	Rovenstine, John—Ph. 674-5411	Hill City, Kansas
1962	Rovenstine, Wendell—Ph. TA 3-4384	1839 Haskett, Salina, Kansas
1933	Schendel, L. E.—Ph. RE 4-2777	Box 282, Bird City, Kansas
1918	Solter, H. L.—Ph. TW 9-5150	Goodland, Kansas
1922	Solter, Mrs. H. L.	Goodland, Kansas
1950	Stewart, Mrs. Florence	Fall River, Kansas

Evangelistic Service

1954	Berry, Morris	Colby, Kansas
1950	Farr, G. W.	Goodland, Kansas
1929	Glendenning, Roy, c/o Louis Jackson	Parker, Kansas
1940	Wyllie, Andrew R.	R. R. 1, Box 4, Humboldt, Kansas

Denominational Service

1930	Busby, Howard K., District Superintendent—Ph. 316-427-4131	Lamont, Kansas
------	--	----------------

Retired

1938	Armstrong, Ralph—Ph. 384-5647	Box 523, Syracuse, Kansas
1936	Craik, Mrs. J. D.	Oakley, Kansas
1952	Gray, L. C.	307 N. St. Paul, Wichita, Kansas
1920	Hamilton, Mrs. Anna	Argonia, Kansas
1942	Isgrigg, J. E.	2356 S. Erie, Wichita, Kansas
1944	Lyder, H. H.	219½ Cedar, Olathe, Kansas
1918	Marvin, Mrs. Victor—Ph. WH 3-4324	439 N. West St., Wichita, Kansas
1945	Miller, Mrs. Ruth	P. O. Box 466, Syracuse, Kansas
1928	Taylor, B. J.	Winona, Kansas

INACTIVE ORDAINED MINISTERS

Released for work outside the denomination

1959	Wood, Miss Letha	818 N. Washington, P. O. Box 385, El Dorado, Kansas
------	------------------	---

All Ordained Ministers not otherwise listed

1950	Whittington, A. E.	Johnson, Kansas
1937	Wise, A. I.	Oakley, Kansas

ACTIVE LICENSED MINISTERS

Pastoral Service

Adams, Melvin	Wichita, Kansas
Andrews, Jess P.	Lincoln, Kansas
Bocox, Thomas	Sharon Springs, Kansas
Hirt, John (1)	Murdock, Kansas
Leatherman, Mrs. Hazel Thomas (3)	Toronto, Kansas
Moore, David (3)	
Owen, Kenneth (3)	Scott City, Kansas
Ware, Wayne	Howard, Kansas

Other Work

Soltero, Mrs. Nellie (World Missions in Mexico), Box 522,	Laredo, Texas
---	---------------

ACTIVE ORDAINED DEACONESSSES

Cook, Mrs. Esta Virginia	Osawatomie, Kansas
1951 Overholt, Mrs. Claude	Lamont, Kansas

LICENSED DEACONESSSES

Lyder, Mrs. H. H.	Olathe, Kansas
Frazier, Mrs. Mary C.	Fowler, Kansas

CHURCHES AND THEIR DELEGATES

Argonia	Lowell Benjamin	Lamont	Daniel D. Busby
Big Bow	Dale Pucket	Lincoln	Juanita Rathbun
Bird City	C. R. Moffett	Lyndon	Richard Lewis
Brewster	None	Oakley	Wayne Englehardt
Colby	Don McGuire	Osawatomie	Mary Lou Gibbons
El Dorado	Wayne Morris	Sabetha	Ralph Fletchall
Fall River	Frank Welch		Chris Aeschliman
Fowler	Erma McDowell	Salina	None
Fredonia	Bliss Doane	Scott City	None
	Harold Finkenbinder	Sharon Springs	Paul Slaven
Garden City	Isabelle Sager	St. Francis	None
Goodland	Mrs. O. L. Elliott	Syracuse	Paul Jones
	Talma Rummel		Vernon Finkenbinder
Hill City	Nellie Dunivan		Dan Buck
Humboldt	Maudie Romime	Toronto	None
Hutchinson	G. John Hirt	Wichita Bethel	Elsie Bennett
Iola	David Wylie	Wichita First	Katie Cooley
Johnson	Kate Carrithers	Wichita Grace	Mary Mason
	Theda Pearce	Wichita Trinity	Dorothy Payner
Lakin	Fred Bontrager	Winona	None

IN MEMORIAM

Mrs. Bessie Aslin, an ordained minister of the Pilgrim Holiness Church was called to her heavenly home on April 24, 1967.

For 35 years she served with her husband ministering at home and on the mission fields.

Her Godly life was an inspiration and blessing to all who knew her. She will be greatly missed by her family and fellow Pilgrims. May God bless her memory.

Mary Lou Gibbons
Billie Lou Spellman

MEMORIAL SERVICE

A Memorial Service was held in our tabernacle on Saturday morning, August 5, 1967 at 9:00 honoring Mrs. Bessie Aslin who served the Lord in her home land and also as a missionary in foreign lands with her husband.

The service began with Rev. J. Orvan Keller softly playing the organ. Rev. Howard K. Busby, the District Superintendent, read some fitting Scriptures. Rev. L. E. Schendel, the Assistant District Superintendent, gave some appropriate remarks about her life of love, devotion, and faithfulness to her Lord and Master. Rev. and Mrs. E. W. Burton sang "Goodnight and Goodmorning". Rev. B. F. Ireland gave the closing prayer.

In times like this we thank God anew for His great salvation and for the Hope we have beyond this veil of tears.

MINISTERIAL INFORMATION

Rev. Mrs. Thomas E. Aslin, deceased.

Rev. Willis Snyder, transferred to the Indiana District.

Rev. Melvin Adams, transferred to the Central District.

Rev. M. L. Pottenger, transferred to the Rocky Mountain District.

JOURNAL OF PROCEEDINGS

The Fifty-fourth Annual Conference of the Kansas District of the Pilgrim Holiness Church convened at 8:00 a.m. Monday, August 7, 1967 in the Camp Meeting Tabernacle at Hutchinson, Kansas.

The Conference was called to order by Rev. H. K. Busby, the District Superintendent. Rev. B. F. Ireland led in singing, "Victory Ahead". Rev. J. Orvan Keller was at the organ. Rev. Dean Mitchener led in prayer.

Rev. Busby introduced Rev. J. D. Abbott, our General Superintendent who presided over the Conference. He read 2 Peter 3: 1-13. Since he had spoken twice the previous day, he refrained from commenting on the Scripture.

The report of the Examining Board was read and adopted.

The Wichita Grace Church represented by Rev. Claude Overholt, the pastor and Mary Mason, the delegate, was received into the Conference.

The report of Rev. H. K. Busby, our faithful and devoted District Superintendent, was given and accepted with appreciation.

The report of the Assistant District Superintendent was read and accepted.

The report of the Auditing Committee was read and accepted.

The report of the Treasurer was read and accepted.

The report of the Sunday School Promotional Secretary was read and accepted.

The report of the District Missionary Society was given by the president, Mrs. H. L. Solter, and gladly accepted.

The report of the Memoir Committee was read honoring Rev. Mrs. Bessie Aslin.

A short verbal report of the Statistical Committee was given and accepted.

The report of the Resolution Committee was heard. It was moved and carried that No. 16 under III Camp and Conference, No. 3 under IV Educational Work, and No. 9 under V Sunday School and Youth Work be deleted. Motion carried that the District Secretary post the nominations made to the various offices by the District Council, at least one day before Conference. Motion prevailed to rescind the above action. The following statement was added to No. 16 (now No. 15) under V Sunday School and Youth Work. "And that when they send it back, they insure the projector and the screen."

A resolution that each church furnish the heating and cook stoves and the drapes, lost.

No. 13 under V. Sunday School and Youth Work, carried.

No. 3 under IV Educational Work carried.

No. 13 under II District Work was adopted.

Report of the Ways and Means Committee was read. Changes were made in No. 2, 6, and 7. No. 16, 17, 18, 19, and 20 were added.

Rev. D. R. Close was introduced, gave his testimony and was given an honorary seat within the Conference bar.

The chairman asked Rev. Busby to appoint tellers for the election. Those appointed were Garry Plummer, chairman of the tellers, Morris Berry, Francis Aeschliman, David Wiley, Wayne Ware, Paul Jones, Richard Lewis, and David Moore.

The election results were:—

Assistant District Superintendent	L. E. Schendel
District Secretary	Wayne R. Plummer
District Treasurer	Lorren D. Elliott
Advisory Board Members	O. M. Allen
	Francis M. Hobbs
	E. W. Burton
Examining Board Member	Ray Gilbert
Educational Board Member	Carl Lewis
District Trustee	C. R. Moffett
District Missionary President	Mrs. H. L. Solter

Rev. Wayne Ware, Rev. Thomas Bocox, and Rev. Francis Aeschliman were introduced to the conference and gave their testimonies.

Motion prevailed that the District Council present a list of names out of which we would elect the lay delegates.

Motion prevailed that if no election on any ballot that we vote on the 6 highest when needing 3 elected, or on the 4 highest when needing 2, or on the 2 highest when needing one.

For the results of the election of the Ministerial and Lay delegates to the Pilgrim Holiness international Conference and to the Merging Conference, please see page 10.

Time 2:45 CDT

Motion carried that the District Council appoint CYC and PELT leaders.

Motion carried that the District Council approve the Conference Minutes and take care of any unfinished business.

Several "Thank You" notes were given, which seen under Special Resolutions.

Rev. J. D. Abbott spoke briefly on the Merging Conference.

Rev. H. K. Busby closed the Conference with prayer.

ANNUAL REPORT OF THE DISTRICT SUPERINTENDENT

To the 54th annual conference of the Kansas District of the Pilgrim Holiness Church now in session at Hutchinson, Kansas—Greetings!

Reality forces us to agree that twelve months have passed, a passing that has carried us swiftly toward a never ending eternity. World conditions are such that long shadows reach us here but I thank God for every ray of light that pierces the gathering gloom.

A survey of our work reveals many things. Slight gains in Sunday School attendance and church membership should cheer us, but we must better apply ourselves to the work of kingdom building.

Last year we reported that new efforts were being made in Topeka, Howard and Wichita. The Topeka work has prospered well under the leadership of Rev. Francis Hobbs. The new property is well located, adequate, and was paid for with funds realized from the sale of our former church property to the city of Topeka. In one year, the church is self-supporting and the Sunday School is growing.

The group at Howard has remained faithful and Rev. Wayne Ware will soon move there and become the full-time pastor.

The Overholt's have ably led a small group of saints in Wichita. This work has been organized.

Neither Topeka or Howard are organized, but each of these works made an estimate of what a reasonable budget payment would be and sent this money to the District Treasurer.

As we look toward another year, there will be little expense attached to these works except for rent and property payments.

We dedicated the church at Brewster and the people are happy in their new home. General Superintendent Abbott came to Hill City for the dedication of the church there.

Sabetha is crowded with an expanding Sunday School and they recently purchased a house adjacent to the church that will fill a need. Lyndon has installed new rest rooms and numbers of other churches have spent and labored to improve their facilities.

Lakin is in a very progressive church building program. When finished, it will serve as a model to all of our people that would rise and build.

Rev. Willis A. Snyder received a call from an Indiana church soon after conference last year. As he left us, the need for a man was critical to serve our

Trinity church. The building at Olivet was in such condition that it seemed wise to merge Olivet and Trinity with Rev. Dean Mitchener serving as pastor. This move was successfully made, only by diligent efforts on the part of Brother Mitchener and the combined groups.

The work of our Youth and Sunday School leaders in the District is due special mention and words of appreciation. The Rock Springs youth camp continues to be a highlight of our Youth work.

The high rate of Advocate subscriptions gives reason for encouragement.

Our people have responded again and again to financial appeals and our giving is well balanced. The United Stewardship Fund is over 93% paid and the District Budget is over 95% paid. We also continue to freely give to christian education.

Rev. Bessie Ruth Aslin was called to her heavenly reward this year from our thinning ranks of gospel workers.

A joint ministerial convention was held this year with the Wesleyan Methodist brethren. This is the beginning of such cooperation with a people with whom we shall soon be bearing the name of The Wesleyan Church.

With the church merger imminent, the matter of colleges, camp meetings, etc., are bound to be much in our thinking. Time will bring many changes, but only time will reveal what they are to be. It seems highly probable that not only will we meet here for another camp meeting, but that a conference will be held here a year hence, as one of the newly formed Wesleyan Church.

As chairman of the College board, I have traveled many miles in the interest of the school. This has been mostly in trips to McPherson, Miltonvale and Bartlesville. General Board and Polity committee work also takes considerable time and travel. Youth camp, funerals, baptisms and dedications have come in to claim a share of our time.

I am reporting 105 sermons preached, 70 parsonage calls and 100 church visits. You have paid me for 24,116 miles of travel and are kind to give me time for two meetings off the district for revivals. I have taken only one and that was the Clarkston Camp in Washington.

Love offerings have amounted to \$641.26. This gives us a real financial lift.

My heaviest burden continues to be the lack of men, good men, God's men to do God's work. Please pray that the Lord will give me strength in the coming year of increasing burden and responsibility.

Respectfully Submitted,

HOWARD K. BUSBY

ASSISTANT DISTRICT SUPERINTENDENT REPORT

To the Fifty-Fourth Annual Conference of the Kansas District:

Because of the faithful labors of our District Superintendent, my official duties have been few. I have attended the District council meetings and been available for any duties that my District Superintendent might require of me.

It has been a pleasure to work with the Brethern of the Kansas District.

Respectfully submitted,

L. E. SCHENDEL

REPORT OF THE DISTRICT SUNDAY SCHOOL PROMOTIONAL SECRETARY

Sunday School work is interesting, fascinating and rewarding work. It has been my pleasure to labor with you in this field for the few months since my predecessor, Rev. Willis Snyder, transferred to the North Indiana Conference.

I trust that every Pastor, Sunday School Superintendent and Teacher will rally behind the leadership of our new Promotional Secretary and boost our Sunday Schools this year.

Fifteen of our Schools showed numerical gains as follows:

Topeka	17	Wichita Grace ..	6	El Dodaro	2
Sabetha	15	Argonia	5	Humbolt	2
Fredonia	14	Hill City	5	Lamont	2
Garden City	9	Osawatomie	4	Toronto	2
Oakley	7	Howard	3	Midian	2

The percentage gains were as follows:

Topeka	94	Hill City	19	Osawatomie ...	10
Wichita Grace	33	Sabetha	18.5	El Dorado	8.6
Garden City	24	Howard	17.7	Argonia	7.8
Humbolt	20	Fredonia	17	Lamont	6
Toronto	20	Oakley	11	Midian	5

Both the highest awards — percentage and numerical — go to our Topeka Sunday School. Congratulations to Rev. Francis M. Hobbs and his fine staff.

The decade of progress ship award goes to the Syracuse Sunday School with 12,717 points. Honorable mention is made of Sabetha's and Fredonia's fine records with 12,140 and 11,662 points respectively.

Since this will be our last year as a Pilgrim Holiness Church, let us put forth every effort possible to make this year our finest year for God, for our "beloved Zion" and for souls.

Respectfully submitted,
ROBERT H. HECKART
Promotional Secretary

REPORT OF THE JOINT SESSIONS OF THE EDUCATIONAL AND EXAMINING BOARDS

WE RECOMMEND THE FOLLOWING:

For Preacher's Conference License —
Wayne Ware; Thomas Bocox

For Renewal of Preacher's Conference License —
Mrs. Nellie Soltero; John E. Hirt

For renewal of Deaconess' License —
Mrs. H. H. Lyder

For Deaconess' License — Changing from Preacher's License.
Mrs. Mary C. Frazier and for Ordination as Deaconess at the
1968 District Conference.

To Be recognized as ordained Conference Evangelists —
G. W. Farr; Andrew R. Wylie; Roy Glendenning; Morris Berry

For Renewal of Conference Preacher's License —
Mrs. Hazel Leatherman and for ordination at 1968 District Conference.
Kenneth Owen and for ordination at the 1968 District Conference on
finishing the course of study prescribed by the Educational Board.
David Moore, and for Ordination at the 1968 District Conference on
finishing the course of study prescribed by the Education Board.

That Jess P. Andrews be received into this Conference from the Rocky Mountain District as a Licensed Minister and have full privileges of the Kansas Conference.

That Francis Aeschliman be received into this Conference from the Idaho-Washington District as an Ordained Minister and have full privileges of the Kansas Conference.

Respectfully submitted,
THE EXAMINING and EDUCATIONAL BOARDS
In Joint Session
RAY GILBERT, Secretary

DISTRICT TREASURER'S REPORT

July 18, 1966 to July 18, 1967

DISTRICT BUDGET

Receipts:

Balance on hand July 18, 1966	\$ 721.13
Tithe to Budget	5402.12
Budget from Churches	2204.54
District paper	255.40
Conference Minutes	83.50
District Sunday School Promotion	55.90
Special Offerings	91.65
1966 camp Sunday School Offerings	42.64
Ministerial Convention Offerings	116.30
Received for Pension Fund	18.00

Total Receipts	\$8991.18
----------------	-----------

Disbursements:

Rev. H. K. Busby, Supt. Salary	\$ 3600.00
Rev. Wayne R. Plummer, Sec. Salary	100.00
Rev. Lorren D. Elliott, Treas. Salary	200.00
Superintendent's Expense Account	1520.51
Other workers expense	343.85
Phone	428.28
Utilities	240.00
Postage, printing, etc.	217.68
Bond for Treasurer	7.50
Deposit box rental	4.00
Printing Conference Minutes	366.65
Printing District Paper	643.15
Conference Payment to Pension	306.00
Conference Payment to Blue Cross	97.38
Ministerial Convention Expense	128.03
C. P. C. Board Mtg. Expense	182.87
Parsonage Insurance	161.00
Flowers	37.67

Total Expenditures	8584.57
--------------------	---------

Balance on hand	\$ 406.61
-----------------	-----------

DISTRICT HOME MISSIONS

Receipts:

Balance on hand July 18, 1966	\$ 1535.07
Received from Churches	3876.38
1966 Camp Offering	79.08
Payments on Kansas City Property	582.00
Payments on Arlington Property	177.39
Berkgren Estate	1500.00
Loans Received	11000.00
Sale of Topeka Property	21,356.10

Total Receipts	\$39906.02
----------------	------------

Disbursements:

Bethel Payments	300.00	
Wichita Grace rent	600.00	
Hobbs Support	490.00	
Moving Expense	76.66	
Mileage and Meals	29.75	
Howard Property Payment	1000.00	
Howard Revival	50.00	
Paid on Topeka Property	14537.00	
Topeka Expense	207.00	
Paid on Loans and Interest	14554.97	
Conference Payment to Blue Cross	125.82	
	<hr/>	
Total Expenditures		31971.09
		<hr/>
Balance on hand		\$7934.93

CAMP MEETING**Receipts:**

Deficit July 18, 1966	\$ 1999.46	
Received from Churches	2730.02	
1966 Camp Offerings	764.03	
Registration	864.00	
Offerings for Meals	156.20	
Received from District Youth	300.00	
	<hr/>	
Total Receipts		\$2814.79

Disbursements:

Salaries for Workers	925.00	
Food and Supplies	1321.46	
Repairs and Equipment	482.01	
Utilities	366.57	
Rooms.	28.84	
Repair on House	1487.29	
Flowers	20.00	
	<hr/>	
Total Expenditures		4631.17
		<hr/>
Deficit		\$1816.38

DISTRICT CHURCH EXTENSION LOAN FUND**Receipts:**

Balance on hand July 18, 1966	\$ 5594.85	
Received from Tithe	1790.24	
Payments on Loans	8040.76	
	<hr/>	
Total Receipts		\$15425.85

Disbursements:

Paid on Loans and Interest	\$ 1371.50	
Loan to Lakin	5000.00	
	<hr/>	
Total Expenditures		6371.50
Balance on hand		\$9054.35

INTERNATIONAL CONFERENCE

Balance on hand July 18, 1966	\$ 64.07	
Received from churches	292.40	
	<hr/>	
Total in fund		\$ 356.47

BLUE CROSS - BLUE SHIELD

Receipts:

Balance on hand July 18, 1966	\$ 513.35	
Received from Churches and Ministers	7931.79	
	<hr/>	
Total Receipts		\$8445.14

Disbursements:

Paid to Blue Cross Blue Shield	\$ 7855.98	
Refund to Bird City	11.40	
	<hr/>	
Total Expenditures		7867.38
Balance on hand		\$ 577.76

BIBLE SCHOOL

Received from Churches	\$ 7154.99	
1966 Camp Offering	53.38	
	<hr/>	
Total received and paid to School		\$7208.37

PILGRIM PENSION PLAN

Received from pastors	\$ 612.70	
Received from Churches	2173.68	
	<hr/>	
Total received and paid to Plan		\$2786.38

GENERAL FUNDS

United Stewardship Fund	\$ 6792.27	
World Missions	14395.18	
Church Extension	1903.87	
Sunday School and Youth	468.11	
	<hr/>	
Total received and paid to General Treasury		\$23559.43

SUMMARY

Balance on hand all Funds July 18, 1966	\$ 6429.01	
Total Receipts	103064.62	
	<hr/>	
Grand Total Receipts		\$109493.63
	<hr/>	
Total Expenditures		92979.89
Balance on hand all funds July 18, 1967		\$ 16513.74
Notes Outstanding		\$ 6100.00

LOANS PAYABLE TO DISTRICT CHURCH EXTENSION LOAN FUND

Wichita Bethel	\$ 1650.00	
El Dorado	400.00	
Colby	470.00	
Iola	975.00	
Hill City	5874.37	
Lakin	5000.00	
	<hr/>	
Total payable to Loan Fund		\$14369.37

Respectfully submitted,
LORREN D. ELLIOTT, District Treasurer

REPORT OF THE WAYS AND MEANS COMMITTEE

1. We recommend that all pastors pay their tithe from their pastoral salary, and that the District Superintendent pay all his tithe from his district superintendent's salary, through the church treasurer to be applied as follows: three-fourths to the District Budget; one-fourth to the District Church Extension Loan Fund.

2. We recommend that the Evangelists pay one-fourth of their Ministerial tithe and all other unstationed licensed and ordained ministers pay three-fourths of their Ministerial tithe to the District Treasurer to be applied to the District Budget. We further recommend that the Conference payment, for all pension plan members of the above groups who comply with the provisions of this recommendation, be paid from the District Budget with the exception of those otherwise covered.

3. We recommend that each church pay the following amount per each assessable member as reported to the last District Conference: District Budget \$3.00; United Stewardship Fund \$9.50; International Conference \$4.00.

The apportionment totals are listed here for your convenience.

Church	Assessable Members	District Budget	United Stewardship Fund	Inter- national Conference
Argonia	46	\$138.00	\$437.00	\$18.40
Big Bow	17	51.00	161.50	6.80
Bird City	18	54	171.00	7.20
Brewster	8	24.00	76.00	3.20
Colby	20	60.00	190.00	8.00
El Dorado	12	36.00	114.00	4.80
Fall River	11	33.00	104.50	4.40
Fowler	24	72.00	228.00	9.60
Fredonia	44	132.00	418.00	17.60
Garden City	9	27.00	85.50	3.60
Goodland	38	114.00	361.00	15.20
Hill City	8	24.00	76.00	3.20
Humboldt	6	18.00	57.00	2.40
Hutchinson	37	111.00	351.50	14.80
Iola	13	39.00	123.50	5.20
Johnson	51	153.00	484.50	20.40
Lakin	17	51.00	161.00	6.80
Lamont	16	48.00	152.00	6.40
Lincoln	18	54.00	171.00	7.20
Lyndon	13	39.00	123.50	5.20
Oakley	36	108.00	342.00	14.40
Osawatomie	21	63.00	199.50	8.40
Sabetha	50	150.00	475.00	20.00
Salina	9	27.00	85.50	3.60
Scott City	7	21.00	66.50	2.80
Sharon Springs	19	57.00	180.50	7.60
St. Francis	21	63.00	199.50	8.40
Syracuse	76	228.00	722.00	30.40
Toronto	7	21.00	66.50	2.80
Wichita Bethel	11	33.00	104.50	4.40
Wichita First	32	96.00	304.00	12.80
Wichita Grace	17	12.75	40.38	1.70
Wichita Trinity	31	93.00	294.50	12.40
Winona	10	30.00	95.00	4.00

4. We recommend that the District Superintendent have the privilege of conducting two revival meetings off the district, and that he have a two weeks vacation each year.

5. We recommend that all the churches send in their remittances to the District Treasurer so as to reach him by the tenth of each month.

6. We recommend that we pay our District Superintendent at the rate of \$300.00 per month. His traveling expenses shall be paid as follows: 5c per

mile when traveling in his personal vehicle, actual expense when traveling by other means, and full reimbursement for meals and lodging. We further recommend that the District pay his telephone bill and \$20 per month for utilities.

7. We recommend that each Sunday School be apportioned the following per month for District Home Missions:

Argonia	\$4.00	Lamont	\$2.00
Arlington	1.00	Lincoln	3.00
Big Bow	4.00	Lyndon	1.00
Bird City	3.00	Oakley	3.00
Brewster	1.50	Osawatomie	2.00
Colby	2.00	Sabetha	4.00
El Dorado	1.00	Salina	1.00
Fall River	1.00	Scott City	2.00
Fowler	2.00	Sharon Springs	2.00
Fredonia	4.00	St. Francis	2.00
Garden City	2.00	Syracuse	6.00
Goodland	4.00	Toronto	1.00
Hill City	1.00	Topeka	2.00
Howard	1.00	Wichita Bethel	1.00
Humboldt	1.00	Wichita First	4.00
Hutchinson	4.00	Wichita Grace	1.00
Iola	1.00	Wichita Trinity	2.00
Johnson	4.00	Winona	1.00
Lakin	2.00		

8. We recommend that each church of the District be apportioned \$5.00 per member in full standing for the financing of our Zone School, Central Pilgrim College, Bartlesville, Oklahoma, as suggested by the Board of Trustees of the College. We further recommend that all offerings received for this school, with the exceptions of Memorial Pledges, and other Building Fund or Property Payment, may be applied on this \$5.00 apportionment.

9. We recommend that all churches take a love offering for the District Superintendent at the time of his regular visits.

10. We recommend that all money raised by the representatives of the General Church and institutional interests be turned over to the local church treasurer and be used for the purpose for which it was raised.

11. We recommend that our District Secretary be paid \$100.00 per year and that our District Treasurer be paid \$200.00 per year.

12. We recommend that any person whose travel is authorized by the District have his traveling expenses met on the same basis as the District Superintendent.

13. We recommend that a form copy of the budget apportionments for each church be sent to the local church treasurer immediately after the conference.

14. We recommend that the month of September be designated as District Church Extension Month and that a special offering be received by each church for this purpose.

15. We recommend that each Sunday School be assessed yearly 10c per scholar on the previous year's Sunday School average attendance to finance a district Sunday School promotion program. Such monies to be sent to the District Treasurer with the regular remittances.

16. We recommend that the attention of the church boards be called to page 45, Section 62, paragraph 6 of the Church Manual, which reads: — "Each local church shall contribute to the Pilgrim Pension Plan fund each month an amount equivalent to 8% of the pastor's salary. This money to be remitted to the General Pension Treasurer. If the pastor of the local church is not a member of the Pilgrim Pension Plan, the above percentage paid by

the church of which he is pastor shall be placed in a fund to assist aged ministers".

17. Resolved that each church take a special offering for camp.

18. Resolved that our Kansas Conference Minutes be sold at 50c each to individuals desiring them. Be it further resolved that each pastor find out how many individuals from his church desire a copy and that he order that amount from the District Secretary not later than September 1st.

19. We recommend that each church help to defray the expense of our District paper by paying five cents per copy for those received.

20. We recommend that a summary of all the church's financial obligations to the district be stated briefly at the end of the 'Ways and Means' report.

LOCAL RESPONSIBILITIES TO THE DISTRICT

District budget	\$3.00 per member
United Stewardship Fund	9.50 per member
International Conference40 per member
Central Pilgrim College	5.00 per member
District Home Missions	Resolution #7
District Home Missions	Special offering - September
Sunday School Promotion10 per scholar
District Minutes50 per copy
Kansas Progress05 per copy
Camp Offering	Special offering before Camp
Blue Cross - Blue Shield	½ payment of premium
Pension Plan	8% of pastor's salary

Respectfully submitted,

Lorren D. Elliott, E. W. Burton,
Robert H. Heckart

REPORT OF THE DISTRICT MISSIONARY COMMITTEE

To The Pilgrim Holiness Church

TO THE 1967 KANSAS DISTRICT CONFERENCE — Greetings.

We can honestly say this has been a good year in our Missionary Society work, and we wish to praise God for the help He has given us to complete some very worthwhile projects.

One of the chief highlights of the past year was the visit of Miss Ruth Meeks, General Missionary Society Director. She gave one day to each zone and most of our local churches were represented in these zone meetings. We shall all remember her anointed messages. The fact that all were inspired to do more for God and Missions than ever before was demonstrated by the good response given our special projects.

Three hundred and thirty-nine dollars and fifty-six cents came in from the call to give Rev. and Mrs. Daniel Hyde a going away Love Gift.

143 dresses were made and are now on their way to Africa for the Chababoma Girl's School. Many of you were thrilled at the picture of united effort, we saw before us, as we looked upon those dresses displayed in the Foreign Mission Meeting on Sunday afternoon July 30, 1967 — The results of all our sacrifice and efforts for others more needy than we.

Seeing what has been done, there is no need for me to say "that we have had wonderful cooperation in every zone". Everywhere we found the spirit of desire to do more to further God's Work. It seemed that all were saying, "Just tell us what more we can do and we will do it". Already plans are made to undertake other projects this coming year.

Respectfully submitted,

Edith Solter, President
District Missionary Society

STANDING RESOLUTIONS

I. Local Church Work

1. We recommend that opportunity for baptism be given by our churches at least once each year.
2. Resolved that each pastor may hold two revival meetings each year off his charge with regular salary.
3. Resolved that our churches do not open their doors to other churches, organizations, institutions, or individuals for financial appeals.
4. Resolved that no pastor employ an evangelist outside the Pilgrim Holiness Church without first consulting the District Superintendent.
5. Resolved that each pastor leaving his charge, prepare and leave for his successor a complete calling list with the location of the homes.
6. We recommend that each pastor be granted two weeks vacation each year with regular salary.

II. District Work

1. Whereas, the Conference has approved the BlueCross - Blue Shield plan, be it resolved that a diognotist x-ray be placed on the Blue Cross - Blue Shield plan and that it be optional with the local churches to pay one-half of the monthly payments.
2. Resolved that the District Council appoint an editor for the district publication.
3. Resolved that any pastor, who is required to be away from his church on district, local, or general business, shall receive his salary as usual.
4. Resolved that we, the Kansas District of the Pilgrim Holiness Church go on record as opposed to members of the Pilgrim Holiness Church being required to violate their religious convictions and the standards of the Church in physical education classes in the public schools.
5. Resolved that the committees be appointed by the council, and the names of those appointed on said committees be printed in the district Minutes.
6. Resolved that in the event of death of any of our pastors' or evangelists' immediate families, the District Secretary shall be immediately wired, and in turn each pastor shall be notified by wire by the District Secretary.
7. Resolved that no mortgage be placed upon our District Camp Grounds, parsonage, and equipment pertaining thereto, without two-thirds vote of the Annual District Conference.
8. Resolved that each church strive for a gain in membership and that each pastor work toward that goal.
9. Resolved that each local church assume the payment of the basic telephone bill each month. This does not include the toll calls which are not made in the interest and direct benefit of the local church.
10. Resolved that each local church pay all parsonage utilities.
11. Resolved that members of the Blue Cross and/or Blue Shield program be dropped if and when they become thirty (30) days delinquent upon notification.
12. Be it resolved that the secretary of the Resolutions Committee post the new and changed resolutions at least one day before Conferenc and that, when possible, a copy of these resolutions be given to each delegate in the Conference.
13. Whereas it seems advisable for the district to provide the organizational framework to study district boundary changes, alignments or adjustments which will be a part of union with the Wesleyan Methodist Church, therefore be it
Resolved, the Kansas District Council shall be or shall name a comity committee to work with such a group of the Wesleyan Methodist Church which shall study district boundary lines for the purpose of making recommendations to the District Conference. It is understood that the committee shall arrange to meet only with their proper area general superintendents for the purpose of coordinated planning. It is further understood that there shall be no merging of districts or conferences prior to the Merging General Conference.

III. Camp and Conference

1. Whereas the Pilgrim Holiness Church Camp Grounds at Hutchinson, Kansas, has been established and dedicated for the purpose of that fellowship and ministry that will promote and propagate scriptural Holiness, it is expected that those attending shall willingly observe the following:

RULES

- (1) Smoking on grounds prohibited.
- (2) The wearing of immodest dress will not be tolerated.
- (3) Those sleeping on camp premises are expected to be in by 10:30 p.m. and lights out and quiet by 11:00 p.m.
- (4) Resolved that the council appoint resident supervisors over the boys' and girls' dormitories, and a committee to see that those staying on the camp premises are in on time and that proper order is maintained.
- (5) Unmarried young persons shall not be permitted to stay in tents unless chaperoned by their parents.
- (6) Loud talking, rowdiness, or behavior unbecoming a Christian will not be tolerated in the dormitories.
- (7) It is presumed that those attending the camp have read and are willing to observe the rules and regulations.
- (8) Anyone refusing to comply with the rules and regulations may expect to be asked to leave the camp premises without any refund of registration fee.
- (9) The Pilgrim Youth lunch stand will be closed during each Tabernacle service and at 10:30 each night.
- (10) Be it resolved that those living in dorms obtain permission from supervisors, subject to their parents approval to leave the camp grounds on dates, pleasure rides or for any other reason. Youth, who attend Camp without their parents or guardian and stay in the dormitories, need only the permission of the dormitory supervisor. Infractions are subject to the discipline of camp authorities.

2. We further recommend that the registrar have the above camp rules and regulations printed on cards for display on camp premises, and presented to each one registering.

3. Resolved that the three center sections in the tabernacle to the posts and the platform constitute the Conference Bar.

4. Resolved that the time for the Conference be from 8:00 a.m. to 12 noon, and from 1:30 p.m. to 5:30 p.m. with recess from 12:00 to 1:30 p.m. on the day following the close of Camp.

5. We recommend that the first service of camp meeting be conducted on Friday night of the first week and that all pastors make a special effort to come on the day previous to assist in making preparations for the camp.

6. We further recommend that all pastors make a special effort to attend all of camp and conference.

7. Resolved that the District Camp have Children's and Young People's services.

8. Whereas, the "Ordination" service is of great importance, and

Whereas, we, of the Kansas District, prefer to have it during Camp-meeting rather than on the day of Conference, and

Whereas, it is desirable for relatives and friends of the candidates to be present for the service, Therefore, be it

Resolved, that the names of prospective candidates for ordination shall be presented for action by the District Conference prior to their proposed ordination. Be it further

Resolved, that the District Council, upon reports from the Educational and Examination Committees, shall prepare a list of the remaining requirements which are to be met during the Conference year in order to qualify for ordination; a copy of said requirements shall be placed on file with the Secretary of each of the above Committees, and the respective candidates. Be it further

Resolved that the said candidates appear before the Education and Exami-

nation Committees not later than Wednesday during the succeeding Camp-meeting to report their status on said requirements. Be it further

Resolved that any candidate who has kept his trust inviolate and has fully met the stated requirements shall be ordained in a special service during the Campmeeting upon the action of the previous District Conference.

If requirements have not been met in full the District Council may make further recommendation to the succeeding District Conference.

9. Resolved that each church furnish the District Secretary with the names of its delegates at least 24 hours before the Conference convenes.

10. Resolved that each pastor urge his people to bring their musical instruments to camp.

11. Resolved that the first Friday night service and the day services of the first Saturday be designated as Young People's Services, and that the Youth Conference be held on the first Saturday afternoon of camp.

12. Resolved that those attending the Sunday morning service of the camp meeting be given credit on Sunday School attendance in their home church.

13. Resolved that we have men's and women's prayer bands during camp meeting, and that the leaders be appointed by the district council.

14. Resolved that the daily schedule be as follows: Rising Bell 6:30 a.m., Prayer Service 7:00, Breakfast 7:30, Morning Service 10:15, Dinner 12:00 noon, Children's Service 2:30 p.m., Afternoon Service 2:30, Supper 5:00, Men and Women's Prayer Meetings 5:45-6:00, Youth Service 6:30-7:15, Evening Service 7:30, Curfew 10:30.

15. Whereas certain jobs carry more responsibility in the camp, be it resolved that the District Council appoint camp supervisors and determine their remuneration, if any.

16. Because of the many requests from those attending this camp for more Missionary information, and since Missionary personnel from the department of World Missions are available to us, be it resolved that one hour be set apart for at least two days of the camp for a Missionary service.

IV. Educational Work

1. We recommend that at each annual camp meeting, on the last Wednesday, Thursday, and Friday, there shall be one daily session of the Educational and Examining Boards for the purpose of the examinations of licensed ministers and deaconesses. All ministers knowing themselves due to appear before these boards are urged to be present with their recommendations.

2. We further recommend that the time of each session shall be announced from the platform.

3. Resolved that the members of the Educational and Examining Boards in their third year of service be designated Chairman, and the second-year members be designated Secretary of the Boards, this information to be printed in the Minutes. Be it further recommended that the members of these Boards be reminded to meet immediately after the District Conference for organizational purposes.

V. Sunday School and Youth Work

The duties of the Sunday School Committee in harmony with the manual of the Pilgrim Holiness Church shall be as follows:

1. The District Sunday School Committee together with the District Superintendent shall arrange for Sunday School Conventions to be held in the district during the year.

2. To promote and encourage the Sunday School work throughout the district.

3. To present an annual report to the Conference which shall include the following:

(A) A statement of the work accomplished during the year.

(B) A statement of the general conditions of the Sunday School work in the district.

4. We recommend that where possible each local church conduct a Summer Vacation Bible School, and a report of that work shall be sent to the District Sunday School Committee.

5. We further recommend that each Sunday School Superintendent make

an earnest effort to attend and bring as large a delegation as possible of Sunday School Workers to the Sunday School Convention.

6. Resolved that each church strive for a 15 percent gain in Sunday School attendance, and that they use the plan suggested by the General Church.

7. Resolved that each church on the Kansas District seek to establish children's meetings.

8. Resolved that each church on the Kansas District in which Young People's Societies are not organized, or have no services in their behalf, endeavor to organize a chartered Young People's Society (as suggested by our General Church).

9. Resolved that the Sunday School Committee be appointed and announced by Thursday of camp.

10. Resolved that a Sunday School promotional service be held during camp.

11. Resolved that a Sunday School cease counting fifteen minutes before the close of the Sunday School Class session; thereby placing all Sunday School counting on an equalized basis.

12. Resolved that the Sunday School committee be appointed for a three year term; and that one member be appointed each year.

13. Resolved that the District authorize the Promotional Secretary's, the District Superintendent's, and the Sunday School Committee's trip to the National Sunday School Convention annually — Pilgrim when possible and N.S.S.A. otherwise, and that the district treasurer pay from the district funds transportation on one auto and expenses for the Promotional Secretary.

14. We resolve that a Sunday service during Camp be known as Sunday School hour, and that a free will offering be received for the District Sunday School promotion program.

15. Resolved that the District Film Strip Projector be retained by the District Sunday School Promotional Secretary for the promotion of Sunday School work on the Kansas District. Be it further resolved that local churches may request and use this projector and that any expense for such use be underwritten by the local church making the request, and that they insure projector and screen.

16. Whereas there is a need for greater Sunday School interest and

Whereas the first Sunday of the Camp affords a fine opportunity for such promotion, be it

Resolved that the 9 to 10 o'clock service held in the Dining Room be called the Sunday School Hour and that an offering be taken for District Sunday School promotional work and that the Sunday School lesson be taught.

SPECIAL RESOLUTIONS

1. Be it resolved that a rising vote of thanks be given to Rev. J. D. Abbott, our General Superintendent, in appreciation for his being with us and for the efficient way in which he conducted the conference.

2. Be it resolved that a rising vote of thanks be given to our District Superintendent, Rev. H. K. Busby, for his labors of love for Christ and the Kansas District.

3. Be it resolved that a vote of thanks be given Gilbert Sherman for his labors on the camp ground throughout the year.

4. Be it resolved that a rising vote of thanks be given to the camp workers: Rev. R. G. Flexon, Rev. Floyd Goins, and the Hamilton sisters; to the cooks, Mrs. Claude Overholt and Mrs. Ruth Hogarth; to the children's worker, Mrs. Ray Gilbert.

5. Be it resolved that we express our thanks to Sister Busby personally for the honey.

6. Be it resolved a rising vote of thanks be given to the following: To the Hutchinson News for its news coverage, to the dining room help, tent men, youth leaders, publicity man, the camp police, and anyone else who helped to make this 1967 Camp a success.

YOUTH DIRECTORY

PRESIDENT

Garry D. Plummer . . . 209 N. Quincy, Box 245, St. Francis, Ks. 67756
Phone 913 FE 2-2936

VICE-PRESIDENT

Wendell Rovenstine . . . Ph. 913 TA 3-4384, 1839 Haskett, Salina, Ks. 67401

SECRETARY

O. M. Allen . . . Ph. 913 OR 2-3728, 221 Edgerton, Oakley, Ks. 67748

TREASURER

Daniel D. Busby . . . 913 CO 2-1447, 2404 W. 38th St., Kansas City, Ks. 66103

ZONE LEADERS

North-West

O. M. Allen . . . 913 OR 2-3728, 221 Edgerton, Oakley, Ks. 67748

South-West

Chester Mueller . . . Ph. 316 EL 5-6293, Box 72, Lakin, Ks. 67860

South-Central

J. A. Bushman . . . Ph. 316 HE 5-6721, Box 154, Argonia, Ks. 67004

South-East

E. K. Purcell . . . Ph. 316 DR 8-3743, 802 N. 7th, Fredonia, Ks. 66736

North-East

Carl Lewis . . . Ph. 913-828-4937, Box 381, Lyndon, Ks. 66451

RESOLUTION COMMITTEE

Wendell Rovenstine . . . Ph. 913 TA 3-4384, 1839 Haskett, Salina, Ks. 67401

O. M. Allen . . . Ph. 913 OR 2-3728, 221 Edgerton, Oakley, Ks. 67748

WAYS AND MEANS COMMITTEE

J. A. Bushman . . . Ph. 316 HE 5-6721, Box 154, Argonia, Ks. 67004

Virgil Hogarth . . . Ph. 316 AM 7-9822, 1104 W. 2nd St., Wichita, Ks. 67200

MINUTES OF THE SEVENTEENTH ANNUAL CONFERENCE OF THE KANSAS PILGRIM YOUTH JULY 29, 1967

The seventeenth annual conference of the Kansas Pilgrim Youth convened on Saturday afternoon, July 29, 1967 in the tabernacle on the Pilgrim Holiness Camp Ground in Hutchinson, Ks.

The conference opened with a song and prayer. Our presiding officer, Rev. H. K. Busby, District Superintendent, read selected verses from Hebrews, the eleventh chapter.

The roll was read and the bar established.

Moved and seconded that the conference stay in session if business demands until 4:30. At 4:30 a recess to be called after which the conference would reconvene. Carried.

A fine report was read by the District Youth President, Rev. Chester W. Mueller, and was received unanimously.

The report of the auditing committee was read and received.

The report of the treasurer was read and received.

The report of the following zone leaders was read and received.

Northwest O. M. Allen

South-Central Virgil Hogarth

The Resolutions Committee had no report.

The Ways and Means Committee had no report.

The chairman appointed tellers and the conference proceeded with the election of officers.

A recess was called by the presiding officer so the District Council could make an additional nominee for president following Rev. Chester W. Mueller's withdrawal of his name.

The conference was called to order and the following officers elected:

President Garry D. Plummer

Vice-President Wendell Rovenstine

Secretary O. M. Allen

Treasurer Daniel D. Busby

A rising vote of thanks was given to Rev. Chester W. Mueller for his fine work in years as president.

Moved and seconded that the District Council and the District Youth Council appoint the zone leaders. Carried.

The following committees for the coming year were presented by the District Youth President and approved:

Resolutions Committee Wendell Rovenstine, O. M. Allen

Ways and Means J. A. Bushman, Virgil Hogarth

Moved and seconded that the District Youth Council be empowered to approve the minutes of the conference at the earliest possible date. Carried.

The conference was adjourned by singing "Blest Be The Tie That Binds".

Garry D. Plummer, secretary

REPORT OF THE AUDITING COMMITTEE

We the auditing committee have examined the books of the treasurer and find him to be doing a fine and capable job with the books balancing correctly.

Wendell Rovenstine

Garry D. Plummer

* * * *

On August 6, 1967 the District Council and the District Youth Council met in joint session. The following were elected as zone leaders for the coming year.

Northwest O. M. Allen

Southwest Chester Mueller

Southcentral J. A. Bushman

Southeast E. K. Purcell

Northeast Carl Lewis

STANDING RESOLUTIONS

YOUTH RESOLUTIONS COMMITTEE REPORT

1. Each church of the Kansas District shall strive to organize a chartered youth society.
2. The District Youth President shall visit a meeting of each zone annually.
3. All district youth zones shall use the uniform system in determining points for awards at meetings as established by the District Youth Council.
4. The annual district youth conference shall convene at 1:30 p.m. on the first Saturday of the district camp meeting.
5. The three center sections in the tabernacle back to the posts and the platform shall constitute the Conference Bar.

YOUTH WAYS AND MEANS COMMITTEE REPORT

1. The District Youth President shall receive 6¢ per mile and incidental expenses while visiting the local churches or youth zones. The expenses shall be paid by the church or zone that enjoys his services, as much as is possible. Any expenses that cannot be met in this manner shall be paid from the district youth funds.
2. The travel expense of the District Youth President to any authorized youth leaders conference on the general church level shall be expended from district youth funds.
3. The District Youth President shall not be required to pay the registration fee at the annual youth camp.
4. If, after each youth zone meeting, any zone treasurer shall have a balance in excess of \$20.00, he shall forward that excess to the District Youth Treasurer.

KANSAS DISTRICT PILGRIM YOUTH

Statement of Cash Receipts and Disbursements for the Period July 1, 1966 to June 30, 1967

BALANCE ON HAND, July 1, 1966		\$ 471.57
RECEIPTS:		
Hutchinson Camp Offerings	\$ 151.52	
Snack Bar Income	487.42	
Bookstore and V.B.S. Supplies Income	439.30	
Building Project Receipts from Churches	110.00	
Youth Camp Fees	1,404.70	
Total Receipts		\$2,592.94
DISBURSEMENTS:		
YES Corp Trip — Gwen Mueller	\$ 65.52	
Youth President Travel Expense	145.54	
Bookstore and V.B.S. Supplies Expense	595.80	
Snack Bar Expense	407.40	
Youth Camp Expense	1,461.02	
Loan Repayment to Kansas District	300.00	
Printing Expense	50.00	
Miscellaneous	1.63	
Total Disbursements		\$3,026.91
BALANCE ON HAND, June 30, 1967		\$ 37.60
Outstanding Balance on Loan to District		\$ 300.00

Daniel D. Busby, Treasurer

1967 REPORT OF THE DISTRICT YOUTH PRESIDENT

To the 17th annual conference of the Kansas Pilgrim Youth, Greetings: In the providence of God we are again privileged to assemble in this 1967 Youth Conference.

I want to thank our District Superintendent, district youth officers, zone leaders, pastors and youth for their cooperation and encouragement this past year.

I left last year's camp grateful for our Pilgrim Youth, their potential, talents, and spiritual victories.

Only a few days after our District Conference we were on our way to youth camp with a car load of teenagers bursting with youthful vigor, happy they were on their way to camp.

As always, nothing thrilled our hearts as much as the response of young lives kneeling at an altar of prayer—giving their hearts to Christ. Some prayed through for the first time and are still living for the Lord.

Throughout the year, I attended each zone at least once, with the exception of the South-east zone. At each of these messages, films, or reports were given.

I traveled to Colorado Springs and Miltonvale in the interest of our merged youth camp. In all 1760 miles were traveled. Numerous letters were written and several telephone calls were made.

To date I have received \$106.00 from various zones and the district youth treasurer.

Again I thank each of you for your help and patience. I know that our labors, visions and faith have not been in vain as we have worked together with God. May it all redound to the honor and glory of God and the Pilgrim youth in the Kansas District.

Respectfully submitted

Chester W. Mueller
District Youth President

THE KANSAS DISTRICT SCHOLARSHIP

The Kansas District each year will give a scholarship of one-half tuition to a needy and worthy student going to Central Pilgrim College. In turn the to a needy and worthy student to Central Pilgrim College. In turn the College will give a scholarship of one-half tuition to another needy and worthy student from the Kansas District.

The applicant must be a first year college student. Preference will be given to young people who feel a definite call to full time gospel work (ministry, missionary work, etc.), however, if there are no suitable applicants in this area, then students who are preparing themselves in other areas will be considered.

Each student must be recommended by his or her pastor and local church board. No consideration will be given to any person who is not a member of the Pilgrim Holiness Church.

Each young person who is chosen for a scholarship will be required to arrange with the College for the entire first semester tuition, then the District and/or College will assume the responsibility for the second semester tuition. Further, the candidate for the scholarship must maintain at least a "C" average in all classes the first semester to receive the scholarship for the second semester. Furthermore, the candidate will understand that an unfavorable report from the College as to conduct, effort, etc., could cancel out his or her eligibility for the scholarship.

It is understood that any ministerial student accepting the scholarship will be expected, upon graduation, to serve two years as a pastor in the Pilgrim Holiness Church in Kansas, providing a pastorate is available to him, or refund the amount of the scholarship within two years.

In the event a student other than Ministerial is chosen for a scholarship, said grant shall be considered as a loan to be repaid within two years after graduation. It is further understood that no interest is to be charged in either case.

All applications for scholarships shall be in the hands of the District Secretary by the 15th of July preceding the following school year.

APPLICATION BLANK

Name _____

Address _____

Member of _____ Pilgrim Holiness Church

Aim in life (Ministry, Missionary, Teacher, Business, etc.) _____

Comments of Pastor and/or Church Board _____

Pastor

Church Secretary

It is thoroughly understood that this scholarship does not include board, room, etc., but tuition only.

PASTOR'S
REPORT

Argonia	4		L	41		10		10											401.00		no	no	401.00	Daniel M. Hyde		
Arlington	11		O	74	25	42	208	250	1	10	5			1				3	3120.00	130.00	265.65	yes	most	3385.65	John Hirt	
Big Bow			O	92	25			191	1	3	2	2	12		2				2080.00		65.00	yes	yes	2275.00	Wayne R. Plummer	
Bird City	2		O	87	10	53	105	158	1	1	1	5			3				900.00		125.00	no	no	1025.00	L. E. Schendel	
Brewster		10	O																					Rev. & Mrs. J.O. Keller		
Colby	4	1	O	120	38				3						1			7	2045.00		332.00	yes	yes	2377.00	Morris Berry	
El Dorado	2	10	L	90	74	9	139	148		14	1	29	3		1		1		220.00	17.50		yes	yes	237.50	David Moore	
Fall River	1		L	94		51	127	178		3		27	2						1022.00		54.55	yes	yes	1076.55	Robert Lathem	
Fowler	4		O	106	6	97	293	390				20	15		4			6	1560.00		139.69	yes	part	1699.69	B. F. Ireland	
Fredonia		11	O	104	38	105	790	895	2	12	4	152	226		1	2	1	3	3670.00		30.00	yes	yes	3700.00	E. K. Purcell	
Garden City	3	10	O	80	44	12	200	212					17			5	1		1820.00		350.00	yes	yes	2170.00	Thomas E. Aslin	
Goodland	3		O	85	48			680	2	27	14				3		2	4	3120.00	260.00	250.00	yes	yes	3630.00	E. W. Burton	
Hill City	9		O	79	20	15	123	138	1			30	2						290.00		155.00	yes	yes	445.00	John Rovenstine	
Howard	1	7	L	85				130											920.00		100.00	no	no	1020.00	Frank Welch	
Humboldt																								Ruth Campbell		
Iola	6	10	O	104	42	122	310	432		1					1	1	1	2	1064.00		911.41	yes	yes	1975.41	Ralph Armstrong	
Hutchinson		9	O	55	9			155		20	1	73	3						630.00		41.00	yes	yes	671.00	Earl E. Bell	
Johnson	10		O	110	103	250	262	512	1	3	1	57	82	17	4	1	1	4	3640.00	520.00	204.75	yes	yes	4364.75	Rev. & Mrs. H.L. Solter	
Lakin	6	10	O	111	49	86	106	192	2	11	4	16	2		3				2080.00		284.00	yes	yes	2364.00	Chester Mueller	
Lamont	1		L	75	92	98	190			1	1	8			3				1640.00		10.00	yes	yes	1650.00	Eldon Fry	
Lincoln	3		O	98	50	159	263	422	2	1	1				1			2	1820.00		170.00	yes	yes	1990.00	L. D. Elliott	
Lyndon	9	8	O	105	31			95								1			1300.00		297.00	yes	yes	1597.00	Carl Lewis	
Oakley		10	O	90	44	245	288	533	1	9	1	5	14		3		1	4	3380.00		270.00	yes	yes	3650.00	O. M. Allen	
Osawatimie	3	10	O	74	29	123	145	268							1				2120.00		65.00	yes	yes	2185.00	O. James Cook	
Sabetha	4	1	O	96	52	258	516	774	2	10	4		14		1	22	1	2	3120.00		125.00	yes	tele	3245.00	Ray Gilbert	
Salina		10	O	86	23	42	123	165		6	1	16	2		1	1	2		1075.00		116.00	yes	yes	1191.00	Wendell Rovenstine	
Scott City	6		L	101	33	64	335	399		1		4				2	1	3	1275.00		131.00	yes	yes	1406.00	Kenneth Owen	
Sharon Springs	2	11	O	94	42	176	405	581		3		9	29		3				1800.00		1247.00	yes	yes	3047.00	J. A. Bushman	
St. Francis		10	L	72	30	55	146	201		2					1				1687.50		159.00	yes	yes	1861.50	Garry D. Plummer	
Syracuse	10	2	O	120	34			2104	3	86	31	32	29		4	5	1	6	4635.00		1494.08	yes	yes	6129.08	Robert H. Heckert	
Topeka	1		O	90	35		215	215		15	13	20	9					2	2900.00	520.00	160.00	yes	yes	3580.00	Francis M. Hobbs	
Toronto	9		O	93	41	20	77	97									1		812.87			yes	yes	812.87	Oliver Leatherman	
Wichita Bethel	2		O	101 <th>42</th> <th></th> <th></th> <th></th> <th>2</th> <th>8</th> <th></th> <th></th> <th></th> <th></th> <th></th> <th></th> <th>1</th> <th>1</th> <th>1235.00</th> <th></th> <th>12.00</th> <th>yes</th> <th>yes</th> <th>1247.00</th> <th>F. M. Eichelberger</th>	42				2	8							1	1	1235.00		12.00	yes	yes	1247.00	F. M. Eichelberger	
Wichita First		10	O	86	39			282	1	18	4	4	12			2	1		3356.98		222.97	yes	yes	3579.95	Virgil Hogarth	
Wichita Grace	2		O	84	45	38	99	137	1	12	4				2				725.00		224.76	no	tele	949.76	Claude Overholt	
Wichita Trinity		10	O	58	36	95	105	200		19	6	23	34				1		2690.00	510.00	230.00	yes	yes	3430.00	Dean Mitchener	
Wichita Olivet	9	4	O	28	15	53	35	88	1	7	2	15	9		1				360.00	270.00	10.00	yes	yes	640.00	Dean Mitchener	
Winona		10	O	109	35	117	180	297	1	4	2	10	4		3	1		2	1350.00		182.00	yes	yes	1532.00	Rev. & Mrs. J.O. Keller	
Totals	127	174		3177	1187	2389	5823	11719	28	306	103	558	521	17	50	22	19	57	65864.35	2242.50	8433.86				76,540.71	

CHURCH STATISTICAL REPORT

PRESENT MEMBERSHIP

CHURCH STATISTICAL REPORT	Members on Roll Last Report	Names Dropped From Roll	Transferred by Letter	Deaths	Total Removals	Additions by Letter	Additions by Faith	Ordained Ministers	Licensed Ministers	Local Ministers	Deaconesses	Probationary	Junior Members	Mem. in Full Stdg. Besides Ministerial	Non-Voting Members	Total Membership This Report	Gain	Loss	Preaching Services	Church Prayer Meetings	Cottage Prayer Meetings	Other Services	Total Services	Advocate Subscriptions	Assessable Members
Argonia	49	2			2			2		1				43		47		2	90	95			185	16	46
Arlington																									
Big Bow	17							1						16		17			115	49		49	213	19	17
Bird City	17	2			2		5						2	17		20	3		95	49		49	166	13	18
Brewster	8	3			3		5						4	6		10	2		102	44		3	149	5	6
Colby	21	1			1			1						19		20		1	106	52		16	174	11	20
El Dorado	12								1					11		12			101	88		1	190	2	12
Fall River	11							1	1					9		11			74	43		53	170	8	11
Fowler	25							1		1			1	22		25			119	50		15	184	18	24
Fredonia	49	3	3	1	7	3								43		45		4	96	51		6	153		44
Garden City	7			1	1		13	1					10	8		19	12		98	46		6	150	6	9
Goodland	45							2				6	1	36		45			102	50	20	4	176	24	38
Hill City	15	1	2		3			1					4	7		12		3	92	30			122	5	8
Howard																			100	50		15	166	1	
Humboldt	6						1							5		6			95	45		5	145	3	6
Hutchinson	33					3	2	2		1			1	34		38	5		110	139		29	278	16	37
Iola	10						4	2						11		14	4		105	50	2		157		13
Johnson	58		1	1	2		10	3					15	48		66	8		103	50	52	13	218	20	51
Lakin	18						1	1						16	1	18			106	56	5	16	183	9	17
Lamont	15					1		1	1					14		16	1		91	37		1	129		16
Lincoln	19			1	1			1						17		18		1	116	51	12	53	232	19	18
Lyndon	15	2			2			2						9		13		2	100	44		2	146	8	13
Oakley	34			2	2	5		2					1	33		37	3		90	44	3	15	152	3	36
Osawatomie	21							1						19		21			100	47	1		148	7	21
Sabetha	49					2								49		51	2		104	52		104	260	22	50
Salina	21	9	2		11		1	1					2	8		11		10	99	48			147	5	9
Scott City	8								1				5	6		12	4		94	44		2	140	5	7
Sharon Springs	19							1						18		19			98	49	11	12	170	8	19
St. Francis	21								1	1				19		21			97	49		12	158	10	21
Syracuse	85		4		4		1	2						74	6	82		3	115	46		147	308	29	76
Topeka																			75	44		6	125	12	
Toronto	8			1	1			1	1					5		7		1	103	41		4	148	1	7
Wichita Bethel	17	5	1		6		2							9		11		6	90	43			133	4	11
Wichita First	42	1			1		4	3		1		7	6	28		45	3		102	50	2	14	168	12	32
Wichita Grace	17							1			1			15	2	19	2		107	45		51	203	15	17
Wichita Trinity	27	8	4	1	13	15	3	2					1	28		32	5		104	52		22	178	43	31
Winona	10						3			1				7		10			101	44		4	149	7	10
Wichita Olivet	15		15		15											—		15	42	14		2	58		
Totals	844	37	32	8	77	29	52	45	6	6	5	13	56	709	10	850	54	48	3643	1881	108	704	6331	386	771

CHURCH
TREASURER'S
REPORT NO. 1
Receipts

	Cash Brought Forward	Regular Offerings	Special Offerings	Building Fund	Pastor's Tithe	Loans, Sale of Property, Other Sources	Transferred from Sunday School	Transferred from Young People	Transferred from Miss. Soc.	Total
Argonia	\$10610.63	\$ 4465.63	\$ 8419.93	\$ 698.35	\$ 234.00	\$	\$	\$ 16.51	\$ 707.00	\$ 25152.05
Arlington	77.04	560.00								637.04
Big Bow	202.14	6011.44	1807.05		312.00		571.86			8904.49
Bird City	201.17	4011.98	1704.92		208.00		143.03		105.00	6374.10
Brewster	435.80	1963.37	667.28	3668.58	104.00		229.63			7068.66
Colby	41.98	3015.75	639.90	1900.20	182.95		129.23		47.00	5957.01
El Dorado	.98	1032.01	481.28		42.20		28.52			1584.99
Fall River	28.73	1783.85	224.80		109.10		29.00			2175.48
Fowler	1031.29	3690.64	1679.34		132.00		308.63	61.00		6902.90
Fredonia	626.96	7846.17	247.38		364.00					9084.51
Garden City	304.93	2621.94	936.13	58.08	182.00	36.40	389.67		88.00	4617.15
Goodland	96.73	5707.63	2006.60	2480.77	312.00			85.80	260.50	10950.03
Hill City	13.80	2005.31	125.00		29.00		25.00			2198.11
Howard	293.31	845.52	363.22		400.00					1902.05
Humboldt	31.94	1167.76	363.80		66.20		23.30		68.45	1721.45
Hutchinson	17.16	4273.10	1037.89		146.40		93.32	10.00	205.00	5782.87
Iola	127.51	1334.83	711.75	119.42	63.00		165.63	32.62		2554.76
Johnson	665.11	9063.01	2396.51		357.00					12481.63
Lakin	1615.64	3902.51	1159.94	34753.70	235.20		170.00		120.00	41956.99
Lamont	389.09	2068.32	550.97		154.50		230.41			3393.29
Lincoln	51.74	3541.96	1858.46		182.00		53.63		288.90	5976.69
Lyndon	330.90	1651.54	1175.15	171.09	130.00		211.40		222.00	3892.08
Oakley	169.35	6230.00	1184.39	2757.17	338.00		68.76		186.00	10933.67
Osawatimie	.91	4214.28								4215.19
Sabetha	53.00	5337.57	473.52		312.00					6176.09
Salina	255.66	4692.41	90.01				57.57	10.00		5105.65
Scott City	5.57	2580.02	71.25	61.02	127.50		184.19			3029.55
Sharon Springs	102.33	3286.95	1721.52	429.27	180.00		950.57		210.00	6880.64
St. Francis	1.18	3418.18	1340.11	49.00	187.50		156.00		53.00	5204.97
Syracuse	1058.16	9430.27	3831.85		463.50		407.96		634.95	15826.69
Topeka	484.14	4403.84	300.30		250.00	14.34	160.26			5612.88
Toronto	—	1006.33	329.91		69.71		99.47			1505.42
Wichita Bethel	30.53	4084.09	70.56		130.00	142.62	20.00	16.88		4494.68
Wichita First	2922.63	5653.56	1628.29	1078.58	342.50		937.07			12562.63
Wichita Grace	953.15	1205.15	1115.32	931.80	39.00	600.00				4844.42
Wichita Trinity	44.52	7076.64	2932.46		269.00	16376.08	605.26		237.00	27540.96
Winona	149.33	2256.62	245.29		144.00	536.40	101.55			3433.19
Wichita Olivet	366.52	1451.07	1291.44		36.00		12.00			3157.03
Totals	\$23791.86	\$138891.25	\$45183.52	\$49157.03	\$6834.26	\$17705.84	\$6562.92	\$232.81	\$3432.80	\$291791.99

CHURCH
TREASURER'S
REPORT NO. 2
Local Expenditures

	Pastor's Salary	Pastor's Expense Allowed	Rents and Taxes	Interest and Insurance	Improvements	Paid on Local Indebtedness	Evangelists	Miscellaneous	Pilgrim Pension Plan	Love Offering	Blue Cross	Utilities	Janitor	District Paper	Reserve or Building Fund
Argonia	\$ 2340.00	\$	\$	\$ 142.34	\$ 4180.63	\$	\$ 460.00	\$ 1832.64	\$	\$ 50.00	\$ 182.12	\$ 825.97	\$ 260.00	\$	\$
Arlington	401.00			6.38				38.92		10.00		108.30			
Big Bow	3120.00			237.93			344.00	707.62	312.00		108.08	337.09		6.00	
Bird City	2080.00				138.95		175.00	551.65	226.40		84.00	362.64		12.00	
Brewster	1040.00	25.00	92.43	139.00	910.25	2252.49	200.00	396.74		100.00	54.90	236.27		7.20	878.00
Colby	2045.00		125.48	81.00	47.50	1792.89	73.00	108.16	73.80		358.08	600.00		10.80	
El Dorado	220.00		67.73	39.75	106.80			23.70	48.20	9.00	234.90	423.99		1.20	
Fall River	1022.00			17.00				69.00		20.00		235.10		5.00	
Fowler	1560.00	50.00	78.07	89.00	100.14		250.00	439.52	159.00		235.16	173.51		6.60	
Fredonia	3640.00			161.29	126.04	245.50	585.00	1068.24	86.80		280.26	848.64	336.00		
Garden City	1820.00		19.41	90.65				694.51	182.00		142.60	443.59			
Goodland	3160.00	265.00		76.80	2241.64		530.00	682.30	306.00		280.26	816.71		9.00	
Hill City	290.00		29.65	61.75	317.54	80.00	125.00	61.34			303.28	572.39		7.20	
Howard	920.00			42.00			310.00	144.37				128.35	16.00		
Humboldt	662.00			30.00	10.25		25.00	141.46			50.40	131.08		7.20	
Hutchinson	1464.00	80.00		131.80			222.63	747.34		805.59	33.60	535.79	180.00	10.00	
Iola	630.00			40.00	273.88	331.12	51.12	76.13		41.00	280.26	494.46			
Johnson	4160.00		113.33				375.00	1457.55	392.04		100.80	691.76	450.00	15.00	
Lakin	2080.00		150.00	49.49	9112.65	5491.78	250.00	122.50		143.37	290.04	825.94	104.00		
Lamont	1640.00			85.21				106.70	127.50			135.29		9.00	
Lincoln	1820.00		70.05	24.30			320.00	132.56	182.00	37.00	331.38	666.60		8.35	
Lyndon	1300.00		96.00	90.00	814.86			139.63				335.90		23.00	
Oakley	3380.00			128.00	308.10		550.00	789.88		85.00	290.04	1224.98	195.20	8.00	2626.03
Osawatimie	2120.00				233.17			199.89			290.04	553.52	120.00		
Sabetha	3120.00	238.56	60.90	135.00						26.06		267.28			
Salina	1075.00	120.00	1068.00	419.80	238.09			579.78			263.06	650.90			
Scott City	1275.00							93.78	127.50		317.02	574.30	7.20		
Sharon Springs	1800.00		28.06	205.00	232.77	1155.00	150.00	120.63	89.28	1195.50	263.06	910.97			
St. Francis	1912.50	25.00		124.00	37.33	294.75	225.00	300.58	39.00		290.04	590.04	120.00		
Syracuse	4635.00		61.88	365.97	122.47	1495.79	235.00	660.73	463.50	821.28	180.60	762.54	400.00	13.50	
Topeka	2500.00	30.00			579.77		78.25	85.37	245.00			501.53	60.00	12.00	
Toronto	692.37			70.20		120.50		17.39			290.04	42.64			
Wichita Bethel	1300.00		214.09	555.02		1060.44		139.89		35.56	285.24	452.92	130.00	8.25	
Wichita First	3535.00	260.00		219.00	812.59		200.00	1137.37	183.50		290.04	705.31	255.00	2.00	1078.58
Wichita Grace	725.00		650.00	25.00	517.38		313.00	164.01		91.00		300.19		7.00	
Wichita Trinity	2690.00	510.00	28.24	589.49	1754.49	9881.75	385.00	1714.63	166.88	145.00	223.36	1157.37	256.48	18.00	
Winona	1413.00		158.71	57.00	294.51			91.08			25.80	589.74	80.00	6.00	
Wichita Olivet	360.00	270.00			1029.14	371.62	175.00	160.00	44.01	5.00	86.00	320.60	12.00	5.00	
Totals	\$69946.87	\$1873.56	\$3112.03	\$4529.17	\$24540.89	\$24753.63	\$6549.40	\$15997.59	\$3666.41	\$3620.36	\$6444.46	\$19543.20	\$2981.88	\$217.20	\$4582.61

CHURCH
TREASURER'S
REPORT NO. 3
District Expenditures

	District Budget	Superintendent	Tithe	Camp Grounds	Camp and Conference	Home Missions	Bible School	International Conference	District Minutes	District Youth Project	District Sunday Promotion	C.P.C. Alumni Association
Argonia	\$ 153.00	\$ 51.50	\$ 234.00	\$	\$ 135.00	\$ 151.05	\$ 257.00	\$ 20.40	\$	\$	\$	\$
Arlington							10.00					
Big Bow	51.00	35.00	312.00		106.00	436.55	929.50	6.80	6.50			
Bird City	51.00	19.00	208.00		55.50	86.00	388.76	6.80	5.00			
Brewster	24.00	25.00	104.00		10.00	18.00	49.50	3.20	1.00			
Colby	63.00		182.95	5.18		18.00	51.56	8.40	2.50			
El Dorado	23.00		42.00		25.00	32.00	20.00	.80	2.00	35.00		
Fall River	27.00	25.00	109.10		70.00	20.50	70.00	3.60	2.50			
Fowler	69.00	40.90	147.00		113.99	136.00	413.00	9.20	2.50	1.00		
Fredonia	330.15		364.00			5.00	392.44		5.00			
Garden City	21.00		182.00		36.30	24.00	55.00	2.80	2.50			
Goodland	115.00	19.46	306.00		41.10	36.00	167.62	15.20	4.00		6.48	
Hill City	30.00		29.00	5.00		24.00	85.00	4.00			5.40	
Howard	24.00						40.00	3.20				
Humboldt	18.00	5.00	66.20		25.50	18.00	70.25	2.40	1.50		1.00	
Hutchinson	96.00		146.40		138.00	78.00	113.58	12.00	4.50		8.40	
Iola	30.00	12.75	63.00	25.00		12.00		4.00			2.60	
Johnson	129.00	20.00	357.00			48.00	842.21	17.20	10.00			
Lakin	40.00	19.00	212.00		130.00	174.00	320.00	6.80	3.50			
Lamont	48.00		154.50		86.60		226.25	6.40				
Lincoln	57.00	22.00	182.00		242.91	431.00	95.00	7.60	4.50			
Lyndon	39.00		130.00			33.00	71.00	3.50	1.50			
Oakley	20.00	44.17	338.00			36.00	131.51	3.40			6.90	
Osawatimie	28.00	10.25	208.00			100.00	133.50		3.00			
Sabetha	132.00		312.00		21.00	73.00	220.00	20.60			50.09	
Salina	169.80		112.00			20.42	85.00					
Scott City	21.00	24.67	127.50			24.00		2.80			4.70	
Sharon Springs	5.00	11.39	90.00			80.09	86.26					
St. Francis	63.00		187.0		35.00	312.05	237.75	8.40	1.50			
Syracuse	231.00	35.00	463.50		169.50	402.50	844.45	30.80	6.00			
Topeka	100.00		250.00		5.00	15.00	172.35	10.00				
Toronto	24.00		69.71			16.05	40.00	3.20	1.00			
Wichita Bethel	10.00	5.00	130.00				5.00		3.00			
Wichita First	108.00	15.36	342.50			48.00	125.92	14.40			6.40	
Wichita Grace		65.01	39.00	45.62		240.00	127.85		7.00			
Wichita Trinity	109.29		247.00		10.07	18.00	273.50	11.60	1.50			
Wichita Olivet	14.00	20.00	44.00		20.00	25.00	23.33	1.87	6.00			
Winona	30.00	25.02	144.00		22.25	37.00	100.00	4.00	3.50			
Totals	\$2503.15	\$550.48	\$6635.86	\$80.80	\$1498.72	\$3252.21	\$7374.09	\$255.37	\$91.50	\$36.00	\$91.97	\$

CHURCH
TREASURER'S
REPORT NO. 4
General
Expenditures

	United Stewardship Fund	World Missions	Church Extension	Sunday School Rally Day	Total Expenditures	Cash on Hand
Argonia	\$ 484.50	\$ 1068.51	\$ 168.56	\$ 21.21	\$ 12958.43	\$12193.62
Arlington					574.60	62.44
Big Bow	161.50	896.89	240.00	23.82	8378.28	526.21
Bird City	161.52	664.50	76.00	36.29	5389.01	985.09
Brewster	76.00	141.47	18.65	10.00	6813.10	255.56
Colby	109.90	60.01	38.03	13.62	5871.36	85.65
El Dorado	31.07	108.75	14.45		1509.54	75.45
Fall River	85.50	100.90	25.00	25.00	1932.60	242.88
Fowler	218.50	932.00	70.11	16.42	5310.62	1592.28
Fredonia	195.00	175.52		14.20	8859.08	225.43
Garden City	66.50	484.30	36.61	10.43	4314.20	302.95
Goodland	384.00	1035.81	51.85	25.00	10575.23	374.80
Hill City	95.00		27.32		2152.87	45.24
Howard	76.00				1703.92	198.13
Humboldt	57.00	143.10	27.25	10.30	1502.89	218.56
Hutchinson	304.00	549.60	18.57	11.34	5691.14	91.73
Iola	1.60	38.87	8.60	4.24	2420.63	134.13
Johnson	408.50	1635.93	235.69	43.69	11502.70	978.93
Lakin	181.50	181.50	25.00		20125.07	21831.92
Lamont	152.00	147.65	70.00	26.20	3045.30	347.99
Lincoln	180.50	478.40	48.46	34.93	5376.44	600.25
Lyndon	125.00	375.90		6.40	3584.69	307.39
Oakley	80.70	246.00	77.79	13.89	10714.89	218.78
Osawatimie	102.00	81.94	13.43		4196.74	18.45
Sabetha	418.00	254.90	102.25	23.94	5921.09	255.00
Salina	86.50	15.00			4903.35	202.30
Scott City	77.60	194.15	72.47	8.45	2952.14	77.41
Sharon Springs	5.00	350.16	29.70		6807.82	72.82
St. Francis	199.50	182.85		5.95	5191.74	13.23
Syracuse	731.50	2047.67	198.44	30.22	15408.84	417.85
Topeka	190.00	34.70	10.00	6.20	4885.17	727.71
Toronto	76.02	19.40	12.75	3.52	1498.79	6.63
Wichita Bethel		112.65			4447.06	47.62
Wichita First	342.00	382.49	17.00		10080.46	2482.17
Wichita Grace		161.51	49.53		3528.50	1315.97
Wichita Trinity	313.50	521.33	80.15	10.00	21116.54	6424.42
Winona	95.00	101.78	15.47	14.68	3308.54	124.65
Wichita Olivet	44.33	40.46		15.06	3092.42	64.61
Totals	\$6316.74	\$13966.60	\$1879.13	\$465.00	\$237645.79	\$54146.20

SUNDAY
SCHOOL
FINANCIAL
REPORT

SUNDAY SCHOOL FINANCIAL REPORT	RECEIPTS					EXPENDITURES																	
	Cash Brought Forward	Regular Offerings	Birthday Offerings	General Rally Day Offering	Special Offerings	Total Receipts	Literature	Miscellaneous	District Sunday School Promotion	District Budget	United Stewardship Fund	General Rally Day Offering	World Missions	General Church Extension	Bible School (C. P. C.)	District Home Missions	Building Fund	Other Items	Transferred to Church Treasury	District Paper	Total	Cash on Hand	
Argonia																							
Arlington																							
Big Bow	51.75	383.86	18.87	23.82	427.64	905.94	222.94	15.00	4.00			23.82										837.62	68.32
Bird City	27.02	263.12	18.31	36.29	26.50	371.24	160.09	45.89				36.29			70.72	36.00				571.86		348.99	22.25
Brewster	9.93	1125.27	9.50			1144.70	109.46	964.40				10.00	28.52			18.00						1130.38	14.32
Colby	.39	1033.05	6.55	13.62	64.45	1118.06	225.54	69.05			85.40	13.62								724.43		1118.06	—
El Dorado	9.46	197.18	7.39		32.58	246.61	137.67	57.28					28.52									223.47	23.21
Fall River	63.95	209.67	2.81	21.36	7.42	305.21	94.97	5.62	12.00			21.36	10.00	7.00				2.00				152.95	152.26
Fowler	42.69	166.67	9.55	16.42	268.48	503.81	118.49	10.22		24.00		16.42	268.48					9.55		6.60		453.76	50.05
Fredonia	.22	569.77	3.79	45.00	98.60	717.38	321.27	87.17				45.00		56.10		48.00						557.54	159.84
Garden City		389.67				389.67														389.67		389.67	—
Goodland	89.50	805.37	17.67	18.96	14.65	946.15	340.68	359.47	10.80	75.00		25.00			22.94							833.89	112.26
Hill City	54.39	143.75				198.14	20.16	82.17		24.00										25.00		151.33	46.81
Howard	57.29	148.93	3.39			209.61	108.45	16.10								12.00					6.00	173.30	36.31
Humboldt	5.22	88.73	10.07	10.30		114.82	62.51	9.85	1.00			10.30				12.00		30.75				95.66	19.16
Hutchinson	14.46	504.02	25.58	11.34	132.93	688.33	295.79	256.56		73.58		11.34									8.40	645.67	42.66
Iola	13.14	142.97	9.00	4.24	245.75	415.10	107.45	72.43	2.60			4.24		4.00	18.31	48.00	210.69					413.41	1.69
Johnson	66.17	901.88	18.31			986.36	503.54	99.57					153.45	51.18								874.05	112.31
Lakin	138.04	539.72	5.84		44.03	727.63	308.27	109.21			145.00		25.00									587.48	140.19
Lamont	50.00	513.27	11.16	26.20	206.27	806.90	209.72	83.64	24.00			26.20								413.34		756.90	50.00
Lincoln	13.02	487.36	18.70	34.93		554.01	167.36	270.23		18.75		34.93										491.22	62.79
Lyndon	111.10	335.25	11.45	6.40		464.20	91.84	132.98				6.40								216.45		447.67	16.53
Oakley	1.46	498.64	11.97	13.89	16.62	542.58	388.58	76.48	6.90	36.00		13.89								11.97		533.82	8.76
Osawatimie	—	269.05				269.05	169.91															269.05	—
Sabetha	38.63	966.88	41.46		76.71	1123.68	283.21	485.81		48.00		23.94	67.55	102.25	41.46					99.14		1052.40	71.46
Salina	241.88				37.04	278.92	154.45	30.80						16.62	20.42							222.29	56.63
Scott City	29.11	552.25				581.36	276.14	99.26	4.60			8.45	57.57	72.47		16.00						534.49	46.87
Sharon Springs	59.33	1471.36	25.72	13.91	20.00	1590.32	324.40		89.55							24.00	1008.00	120.00				1565.95	24.37
St. Francis	7.99	300.19	12.60	5.95		326.73	147.56	130.00				5.95				26.00						309.51	17.22
Syracuse	129.70	944.70	30.17	30.22	526.87	1661.66	529.61	373.77		72.00		3032										591.74	64.32
Topeka	—	323.88	11.63	6.20	52.37	394.08	172.67	61.15														160.26	394.08
Toronto	7.35	203.22		3.52	20.31	234.40	54.82	72.69			71.00	3.52	12.95									226.98	7.42
Wichita Bethel	43.16	310.75	15.38	7.10	19.00	395.39	201.82	122.77				7.10		15.00								384.22	11.17
Wichita First	—	937.07				937.07																937.07	—
Wichita Grace	126.05	269.40	8.84			404.29	83.90	88.49														937.07	231.90
Wichita Trinity	—	605.26				605.26																172.39	—
Wichita Olivet	82.40	126.00				208.40	64.20	120.20								9.00						605.26	605.26
Winona	17.85	207.37		14.68	98.56	338.46	144.60	30.50				14.68		59.40		12.00	39.26			3.00		196.40	12.00
Totals	1603.15	16935.53	365.71	364.35	2436.78	21705.52	6602.07	4438.76	155.45	371.28	301.40	392.67	668.66	387.82	153.43	285.00	1257.95	821.59	4132.83	15.60	19984.71	1721.20	—

56

SUNDAY SCHOOL
STATISTICAL
REPORT

	Teachers and Officers	Active Enrollment	Cradle Roll	Home Department	Total Enrollment	Gain	Loss	Average Weekly Attendance Last Report	Average Weekly Attendance This Report	Gain	Loss	Sessions	Scholars Converted	Joined Church	Books in Library
Argonia	3	69		72				64	69	5		52			
Arlington	3	9		12				10	10			52			
Big Bow	12	28	5	45			5	40	34		6	52			92
Bird City	7	24		31			2	28	29	1		52		5	
Brewster	5	18		23				22	22			52		5	
Colby	6	28	1	35				52	51		1	52			
El Dorado								23	25	2		52	4	1	32
Fall River	7	28	1	36			7	29	26		3	52			
Fowler	6	16	2	24				25	23		2	51			146
Fredonia	14	75	4	120	12			81	96	15		52	8		300
Garden City	3	57		60				37	46	9		51	7	10	
Goodland	11	81	14	106				80	69		11	52			
Hill City	6	35		41				26	31	5		52			
Howard	5	14		19				23	20		3	52			
Humboldt	4	12		16				10	12	2					40
Hutchinson	12	85	8	105			3	84	73		11	50			
Iola	4	22	6	32			3	26	25		1	51			
Johnson	25	109		134				109	106			52		6	76
Lakin	10	55	5	70				50	54	4		52	4		24
Lamont	6	34		40	2			30	32	2		52			
Lincoln	10	25		35			4	37	29		8	52			
Lyndon	8	17		25			2	29	26		3				
Oakley	12	80	2	94				63	69	6		52			
Osawatomie	5	36		41			7	40	44	4		52			
Sabetha	13	107		120				81	96	15		52			
Salina	8	40		48			8	45	41		4	52	5	1	
Scott City	7	74		81				47	40		7	51	1	4	
Sharon Springs	18	50	10	78				62	60		2	52			22
St. Francis	9	40	2	51				41	36		5	52			
Syracuse	18	173	2	193	9			149	145		4	52	23	1	95
Topeka	5	40		45	30			18	35	17		46	10		
Toronto								9	10	1					
Wichita Bethel	9	73		82				57	51		6	52			
Wichita First	10	60		70			42	64	63		1	52			
Wichita Grace	8	17		25	9			18	24	6		52			
Wichita Trinity	15	95		130	56			54	73	19		52			100
Winona	5	20		25			10	36	28		8	52			
Totals	309	1746	62	47	2164	118	92	1670	1697	113	86		62	33	927

YOUTH SOCIETY FINANCIAL REPORT	RECEIPTS			EXPENDITURES								
	Cash Brought Forward	Offerings Received	Total Receipts	Local	District	Pilgrim Youth Miss. Project	Transferred To Church Treasury	Miscellaneous	District Youth Project	Youth Camp	Total Expenditures	Cash on Hand
Argonia	\$ 23.08	\$ 25.07	\$ 48.15	\$ 7.02	\$	\$	\$	\$	\$		\$ 7.02	\$ 41.13
Arlington												
Big Bow												
Bird City	29.68	9.58	39.26	20.22							20.22	19.04
Brewster												
Colby												
El Dorado												
Fall River												
Fowler	5.76	70.87	76.63	.32		61.00					61.32	15.31
Fredonia												
Garden City			12.16									12.16
Goodland	7.24	219.01	226.25	39.20					10.00		49.20	177.05
Hill City												
Howard												
Humboldt												
Hutchinson	52.38	167.37	219.75	140.28			10.00	10.00	10.00		170.28	49.47
Iola	10.23	32.71	42.94				32.62				32.62	10.32
Johnson	142.98	225.13	368.11	190.21			146.54		10.00		346.75	21.36
Lakin	36.25	48.69	84.94					11.25	5.00		16.25	68.69
Lamont												
Lincoln												
Lyndon												
Oakley	35.90	59.94	95.84					62.61			62.61	33.23
Osawatimie												
Sabetha	19.93	202.68	222.61				180.00	18.75			198.75	23.86
Salina												
Scott City	12.66		12.66									12.66
Sharon Springs												
St. Francis	31.87	78.50	110.37	71.15							71.15	39.22
Syracuse	—	74.16	74.16	21.59							21.59	52.57
Topeka												
Toronto												
Wichita Bethel												
Wichita First	31.44	85.11	116.55	33.70							33.70	82.85
Wichita Grace	34.91	54.91	89.82	35.40	20.00						55.40	34.42
Wichita Trinity	10.34	32.92	43.26					6.00			6.00	37.26
Winona	5.41		5.41									5.41
Wichita Olivet	17.50		17.50					17.50			17.50	—
Totals	\$507.56	\$1386.65	\$1906.37	\$559.09	\$20.00	\$61.00	\$369.16	\$126.11	\$35.00		\$1170.36	\$736.01

YOUTH
SOCIETY
STATISTICAL
REPORT

PRESENT MEMBERSHIP

	Membership Last Report	Active	Associate	Honorary	Total Membership This Report	Gain	Loss	No. Subs. to Pilgrim Youth News	Meetings Held	Average Att. Last Report	Average Att. This Report	Is Your Society Chartered?	Number on Service-men's Roll
Argonia	11	11			11			1	49			no	
Arlington								10					
Big Bow													
Bird City													
Brewster													
Colby													
El Dorado													
Fall River									45	4	4	no	
Fowler	4	4			4								
Fredonia													
Garden City	29	9		12	21			10	48	29	22	yes	3
Goodland													
Hill City													
Howard													
Humboldt													
Hutchinson													
Iola	0				5	5			40	0	5	no	
Johnson	24	27			27	3			36	17	16	no	1
Lakin	18	11		9	20	2		8	46	18	20	no	
Lamont													
Lincoln													
Lyndon									47				
Oakley													
Osawatimie													
Sabetha	30	4	9	19	32	2		12	50	24	26		
Salina													
Scott City													
Sharon Springs									42	11	11	no	
St. Francis													
Syracuse	15	15	8	1	24	9			45	18	16	yes	1
Topeka													
Toronto													
Wichita Bethel	0	15	3	6	24	24		10	21	0	20	no	5
Wichita First													
Wichita Grace													
Wichita Trinity												yes	4
Winona													
Totals	131	227	20	47	168	45		51	462	121	147		14

MISSIONARY TREASURER'S REPORT	RECEIPTS			EXPENDITURES						VALUE OF GIFTS, BOXES, ETC. SENT OUT					
	Cash Brought Forward	Offerings Received	Total	Local and Postage	District Church Extension	General Church Extension	World Missions	Bible School	Total	Cash Balance	Locally	District Church Extension	General Church Extension	World Missions	Total
Argonia	\$ 38.22	\$ 804.44	\$ 842.66	\$ 21.99	\$	\$	\$ 801.06	\$ 823.05	\$ 19.61	\$	\$	\$	\$	\$ 64.60	\$ 64.60
Arlington	20.83	214.32	235.15	39.36			181.91	221.27	13.88					50.00	50.00
Big Bow	60.60	4.10	64.70	3.00			44.90	47.90	16.80					6.22	6.22
Bird City															
Brewster															
Colby	12.65	173.98	186.63	127.55			47.00	174.55	12.08		15.00		55.00	222.00	292.00
El Dorado															
Fall River	17.62	507.11	524.73	20.08		21.00	402.91	443.99	80.74				18.67	70.72	89.40
Fowler	12.10	148.00	160.10	52.06			89.63	141.69	18.41						
Fredonia															
Garden City	30.12	130.78	160.90	18.68			86.00	104.68	56.22					6.70	6.70
Goodland	1.63	406.48	408.11				385.66	385.66	22.45				50.00	30.25	80.25
Hill City															
Howard															
Humboldt	6.50	85.60	92.10	22.63			68.45	91.08	1.02		15.00				15.00
Hutchinson	10.10	445.67	455.77	194.00			205.00	399.00	56.77		122.00			200.91	322.91
Iola	4.00	6.62	10.62	4.50				4.50	6.12					45.00	45.00
Johnson	142.13	1424.09	1566.22	238.27	31.65		1287.04	1556.90	9.26				125.00	1086.61	1211.61
Lakin	26.15	192.40	218.55	38.37	4.00		140.25	182.62	35.93					94.20	94.20
Lamont	14.38	57.28	71.66	42.21	11.17	12.00		65.38	6.28			2.50		7.10	9.60
Lincoln	92.61	236.46	329.07	14.39			267.31	281.70	47.37						
Lyndon	42.58	292.92	335.50	18.89			280.50	299.39	36.11					77.00	77.00
Oakley	—	316.22	316.22	5.00			274.17	279.17	37.05						
Osawatomie	15.28	96.14	111.42	3.25			108.17	111.42	—					35.00	35.00
Sabetha	—	229.02	229.02	90.49			117.00	207.49	21.53						
Salina	—	31.69	31.69				22.43	22.43	9.26					42.00	42.00
Scott City	2.14	96.72	98.86	7.39			84.17	91.56	7.30		5.00			20.00	25.00
Sharon Springs	3.50	249.25	252.75	.95			198.00	198.95	53.80					42.45	42.45
St. Francis	46.40	288.31	334.71	154.88			91.05	245.93	88.78					37.68	37.68
Syracuse	13.33	634.95	648.28	206.03			424.85	630.88	17.40				393.95	376.40	770.35
Topeka															
Toronto															
Wichita Bethel															
Wichita First	49.58	336.84	386.42	2.40			348.14	350.54	35.88					273.27	273.27
Wichita Grace															
Wichita Trinity	30.25	425.90	456.15	154.23			301.00	455.23	.92						
Winona	5.49	45.91	51.40				35.83	35.83	15.57					30.00	30.00
Wichita Olivet	10.92	6.95	17.87						17.87						
Totals	\$708.51	\$7888.15	\$8597.26	\$1480.60	\$46.82	\$33.00	\$6292.43	\$7852.79	\$744.41		\$157.00	\$2.50	\$642.62	\$2818.11	\$3620.24

RECEIPTS

EXPENDITURES

SUMMARY OF
TOTALS BY
DEPARTMENTS

	Regular Church	Sunday School	Youth Society	Missionary Society	Grand Total	Regular Church	Sunday School	Youth Society	Missionary Society	Grand Total	Cash on Hand in all Departments
Argonia	\$ 24428.54		\$ 48.15	\$ 859.17	\$ 25335.86	\$ 12234.92		\$ 7.02	\$ 839.56	\$ 13081.50	\$ 12254.36
Arlington	637.04				637.04	574.60				574.60	62.44
Big Bow	8332.63	905.94		235.15	9473.72	7806.42	837.62		221.27	8865.31	608.41
Bird City	6126.07	371.24	39.26	64.70	6601.27	5140.98	348.99	20.22	47.90	5558.09	1043.18
Brewster	6839.03	1144.70			7983.73	6583.47	1130.38			7713.85	267.88
Colby	5780.78	1118.06		186.63	7085.47	5695.13	1118.06		174.55	6987.74	97.73
El Dorado	1556.47	246.68			1803.15	1481.02	223.47			1704.49	98.66
Fall River	2146.48	305.21			2451.69	1903.60	152.95			2056.55	395.14
Fowler	6533.27	503.81	76.63	524.73	7638.44	4940.99	453.76	61.32	443.99	5900.06	1738.38
Fredonia	9084.51	717.38		160.10	9961.99	8359.08	557.54		141.69	9558.31	403.68
Garden City	4139.48	389.67	12.16	160.90	4702.21	3836.53	397.67	12.16	104.68	4343.04	359.17
Goodland	10603.73	946.15	226.25	408.11	12184.24	10228.93	833.89	49.20	385.66	11497.68	686.56
Hill City	2173.11	198.14			2371.25	2127.87	151.33			2279.20	92.05
Howard	1902.05	209.61			2111.66	1703.92	173.30			1877.22	234.44
Humboldt	1629.70	114.82		92.10	1836.62	1411.14	95.66		91.08	1597.88	238.74
Hutchinson	5474.55	688.33	219.75	455.77	6838.40	5387.82	645.67	170.23	399.00	6597.77	240.63
Iola	2356.51	415.10	42.94	10.62	2825.17	2222.38	413.41	32.62	4.50	2672.91	152.26
Johnson	12481.63	986.36	368.11	1566.22	15402.32	11502.70	874.05	346.75	1556.96	14280.46	1121.86
Lakin	41666.99	727.67	84.94	218.55	42698.15	19835.07	587.48	16.25	182.62	20621.42	22076.73
Lamont	3162.88	806.90		71.66	4041.44	2814.89	756.90		65.38	3637.17	404.27
Lincoln	5634.16	554.01		329.07	6517.24	5033.91	491.22		281.70	5806.86	710.41
Lyndon	3458.68	464.20		335.50	4258.38	3151.29	447.67		299.39	3898.35	360.03
Oaklev	10678.91	547.58	95.84	316.22	11633.55	10460.13	533.82	62.61	279.17	11335.73	297.82
Osawatomie	4215.19	269.05		111.42	4595.64	4196.74	269.05		111.42	4577.21	18.45
Sabetha	6176.09	1123.86	222.61	229.02	7751.58	5921.09	1052.40	198.75	207.49	7379.73	371.85
Salina	5038.08	278.92		31.69	5348.69	4834.78	222.29		22.43	5080.50	268.19
Scott City	2845.36	581.36	12.66	98.86	3538.24	2767.95	534.49		91.56	3394.00	144.24
Sharon Springs	5720.07	1590.32		252.75	7563.14	5647.25	1565.95		198.95	7412.15	150.99
St. Francis	4995.97	326.73	110.37	334.71	5767.78	4982.74	309.51	71.15	245.93	5609.33	158.45
Syracuse	14783.78	1661.66	74.16	648.28	17167.88	14365.93	1597.34	21.59	630.88	16615.74	552.14
Topeka	5452.62	394.08			5846.70	4724.91	394.08			5118.99	727.71
Toronto	1405.95	234.40			1640.35	1399.32	226.98			1626.30	14.05
Wichita Bethel	4457.80	395.39			4853.19	4410.18	384.72			4794.40	58.79
Wichita First	11625.56	937.07	116.55	386.42	13064.60	9143.39	937.07	33.70	350.54	10464.70	2600.90
Wichita Grace	4844.42	404.29	89.82		5338.53	3528.50	172.39	55.40		3756.29	1582.24
Wichita Trinity	26698.70	605.76	43.26	456.15	27803.37	20274.28	605.26	6.00	455.23	21340.77	6462.60
Winona	3331.64	338.56	5.41	51.40	3727.01	3206.99	300.44		35.83	3543.26	183.75
Wichita Olivet	3145.03	208.40	17.50	17.87	3388.80	3089.42	196.40	17.50		3294.37	94.48
Totals	\$281563.46	\$21705.91	\$1906.37	\$8613.77	\$313789.51	\$227417.26	\$19984.71	\$1182.52	\$7869.36	\$256453.85	\$57335.66

47

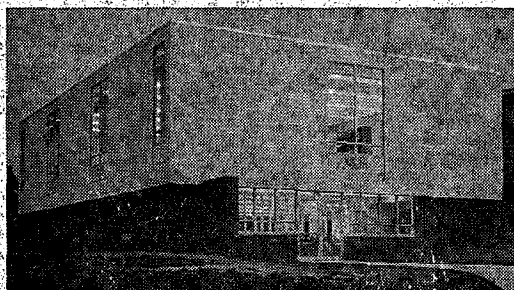
PROPERTY STATEMENT	VALUE			DEBT			EQUITY		
	Church	Parsonage	Total	Church	Parsonage	Total	Church	Parsonage	Total
Argonia	\$ 7500.00	\$ 15000.00	\$ 22500.00	\$	\$	\$	\$ 7500.00	\$ 15000.00	\$ 22500.00
Arlington									
Big Bow	10000.00	15000.00	25000.00				10000.00	15000.00	25000.00
Bird City	5000.00	5000.00	10000.00				5000.00	5000.00	10000.00
Brewster	10000	5000.00	15000.00				10000.00	5000.00	15000.00
Colby	20000.00	3000.00	23000.00	1350.00		1350.00	1850.00	3000.00	2150.00
El Dorado	12000.00		12000.00	1400.00		1400.00	10500.00		10600.00
Fall River	5000.00	5000.00	10000.00				5000.00	5000.00	10000.00
Fowler	5000.00	5000.00	10000.00				5000.00	5000.00	10000.00
Fredonia	12000.00	5000.00	17000.00	300.00		300.00	11700.00	5000.00	16700.00
Garden City	5000.00	6000.00	11000.00				5000.00	6000.00	11000.00
Goodland	20000.00	10000.00	30000.00				20000.00	10000.00	30000.00
Hill City	18000.00	6000.00	24000.00	5865.00		5865.00	12135.00	6000.00	18135.00
Howard									
Humboldt	3000.00	2500.00	5500.00				3000.00	2500.00	5500.00
Hutchinson	6000.00	5000.00	11000.00				6000.00	5000.00	11000.00
Iola	1500.00	3500.00	5000.00		994.99	994.99	1500.00	2505.01	4005.01
Johnson	55000.00	2500.00	57500.00				55000.00	2500.00	57500.00
Lakin	9500.00		9500.00				9500.00		9500.00
Lamont	5000.00	3000.00	8000.00				5000.00	3000.00	8000.00
Lincoln	4200.00	2000.00	6200.00				4200.00	2000.00	6200.00
Lyndon	6000.00	3000.00	9000.00				6000.00	3000.00	9000.00
Oakley	81000.00	12000.00	93000.00	7800.00		7800.00	73200.00	12000.00	85200.00
Osawatomie	8000.00	4000.00	12000.00				8000.00	4000.00	12000.00
Sabetha	11000.00	5000.00	16000.00	1600.00		1600.00	9400.00	5000.00	14400.00
Salina	7000.00	18000.00	25000.00		11964.88	11964.88	7000.00	6035.12	13035.12
Scott City	12000.00	3000.00	15000.00				12000.00	3000.00	15000.00
Sharon Springs	30000.00	12000.00	42000.00	4050.00		4050.00	25950.00	12000.00	37950.00
St. Francis	8000.00	5000.00	13000.00				8000.00	5000.00	13000.00
Syracuse	42000.00	8500.00	50500.00	897.31		897.31	41102.69	8500.00	49602.69
Topeka	5000.00	10000.00	15000.00				5000.00	10000.00	15000.00
Toronto	6000.00	3000.00	9000.00				6000.00	3000.00	9000.00
Wichita Bethel	15000.00	7600.00	22600.00	3586.81	4155.49	7742.30	11413.19	3444.51	14857.70
Wichita First	8000.00	7000.00	15000.00				8000.00	7000.00	15000.00
Wichita Grace									
Wichita Trinity	40000.00	19000.00	59000.00		3367.93	3367.93	40000.00	15632.07	55632.07
Winona	5000.00	6000.00	11000.00				5000.00	6000.00	11000.00
Totals	\$497700.00	\$221600.00	\$719300.00	\$26849.12	\$20483.29	\$47332.41	\$470850.88	\$201116.71	\$671967.59

17

EVANGELISTS,
SINGERS, AND
UNSTATIONED
MINISTERS'
REPORT

	Ordained or Licensed	Your Local Church	Sermons Preached	Songs Sung	Prayer Meetings Conducted	Calls Made or Homes Prayed In	Revivals or Weekend Meetings in P. H. Church	Elsewhere	Total Meetings	Seeking Regeneration	Seeking Sanctification	Total	Prayed With For Healing	Children Dedicated	Weddings	Funerals	Support	Miles Traveled	Advocate Subscriptions
Andrew Wylie	0	Iola	12	25	7												37.50	380	
Miss Letha Wood	0		936		52				27	7				5	13	39	4626.00		1
William Elkinton	0		60	12	4														
Totals			948	37	63				29	7				5	13	39	4663.50	380	1

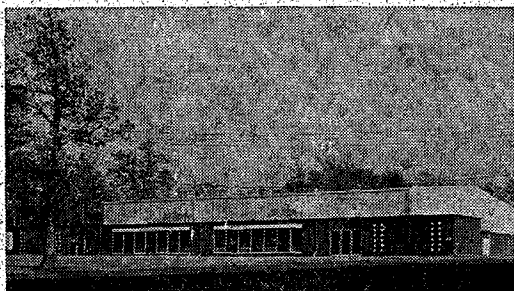
PILGRIM YOUTH MERIT THE BEST IN EDUCATION



New Library Building (1963)

**Owosso
College
is
building for
their future**

**Owosso
College
Graduates
are in
demand**



New Student Activity Building (1964)

- * **The only Liberal Arts College in the denomination.**
- * **Denominationally owned and controlled.**
- * **The oldest college in years of continuous service in the denomination.**
- * **Qualified and experienced faculty.**
- * **High in educational rating.**

Write for free literature to:

**Owosso College
Owosso, Michigan**

DISTRICT CAMP

Hutchinson, Kansas

JULY 26 to AUGUST 4, 1968

Workers

Rev. Ermal Wilson and Rev. Maynard Hinman

Jim and Aletha Sheets

Evangelists

Singers

CONFERENCE

Hutchinson, Kansas

August 5, 1968

MINISTERIAL CONVENTION

Place To Be Announced

MARCH 19-21, 1968

DISTRICT YOUTH CAMP

Rock Springs Ranch

August 20-24, 1968

Photo