

MINUTES  
OF THE  
Fifteenth Annual Assembly  
OF THE  
PILGRIM  
HOLINESS CHURCH  
KENTUCKY DISTRICT

Convened at Kingswood, Ky.

September 15-19, 1924

Editor, Rev. P. W. Waters, 1723 Holman Street, Covington, Ky.



REV. W. R. COX,  
*General Superintendent*



REV. R. G. FINCH,  
*General Foreign Missionary  
Superintendent*

## Foreword

It was again my joyful privilege to preside at the Kentucky District Annual Assembly of the Pilgrim Holiness Church at Kingswood, Ky., September 15 through the 18, 1924. Bearing well in mind the enthusiastic and promising Annual Assembly of a year ago, I was well in position to note the growth and advancement of this district as I heard the reports and compared the figures of this assembly. The enthusiasm that was manifested and the forward look of the ministers and delegates gave sufficient evidence of the conquestive spirit of this thriving and growing district.

The reelection of the Dist. Supt., Brother Johnson, along with the other officials, confirmed the assurance that the oncoming year will mark a corresponding growth, and we predict for them the same. With the mighty Pentecostal results of the General Assembly reflected upon the people of Ky., through the personal channels of the delegates which attended this Assembly, we feel sure that holy fire and undaunted zeal will enable the pilgrims of this district to push the work of the Pilgrim Holiness Church into new territory and plant the banner of full salvation to wave for God and holiness through the coming years. We are not fighting a losing battle. We are not in a useless engagement. The victory is already won and we are but rushing to the ends of the earth to so notify the people. Let us go forward, as is our watchword, and remember that our great Captain will lead us to final triumph and all that we are to do is to obey orders and victory is sure.

May the Lord grant such a mighty wave of revival to this district that each local church will feel the swell and mount the tide of full salvation with the assurance of making a safe landing in the final haven of rest.

REV. W. R. COX, General Superintendent.

## The Kentucky District Assembly

The Kentucky District Assembly has come and gone with a record as clear as the skies—not a jolt or unpleasant word, no heated debates, nor even hard looks. Delegates made their motions, brought forth resolutions, discussed same, and the losers smiled every time and acted Christ-like until it was actually as blessed to lose as to win. A sinner sitting through the Assembly would have seen and felt the Spirit of Jesus the same as in a fire-baptized revival.

The Assembly opened the day after the Kingswood College and State Camp closed. The sweeping, swaying power of God in the Camp left the great new tabernacle and town saturated with holy fire. The last Sunday morning such a crowd gathered that it was impossible to seat them. The students were crowded on the large platform and everything was ready for the program when suddenly, like a rushing, mighty wind, the Holy Ghost fell on the people, breaking up completely the program. Some ran, flinging their arms and shouting, others jumped, and others wept. Although nicely arranged at first on the platform, nearly the whole crowd left it, marching, jumping, singing, and shouting over the tabernacle. It reminded us of descriptions we have read of Peter Cartwright's meetings. Many stood, or sat, open-mouthed; tears flowed; lips quivered; some became pale as death; a few of us kept our place on the platform where we saw it all. It was like this in Ezra's time. The laughing, shouting, weeping and singing could be heard afar. Nothing has ever won real friends for the school like *God did in those few moments*.

In this atmosphere the Assembly opened on Monday amidst prayers, shouts, and fellowship, such as God and pure men and women alone know. One thing which touched every heart was the battle scars on some of the pastors, struggling through with their faithful wives and little children on \$300 or \$400 a year. Wolves in sheep's clothing had entered here and there to scatter the flocks, but the delegate's eye shone clear as the noonday sun, the features as pure as heaven, and voice like a silver trumpet as they reported victory, victory, victory, with never a complaint.

The climax was reached the last night when a brother jumped on the altar asking all to give in order that one of the precious preachers who has lost a limb could secure a light-weight new one. One hundred and fifty dollars was subscribed in a few moments; then several knelt for afflicted bodies and the healing blood and holy fire so filled us that it was easy to believe, receive, and walk away every whit whole.

Oh, for such assemblies in every district! Then Christ's prayer will be answered and the world convinced that God sent Jesus to save the lost, sanctify the believer, heal the sick, and prepare a bride without spot or wrinkle for our Savior to present to God in that glad day.

All for Jesus, R. G. FINCH.

## The District Council



REV. C. B. FUGETT



MISS ORA LUNSFORD,  
*District Treasurer*



REV. H. N. DICKERSON  
*Asst. Dist. Supt.*



REV. C. L. SLATER



REV. J. THOS. JOHNSON,  
*District Superintendent*



REV. C. C. BROWN



REV. P. W. WATERS,  
*District Secretary*

# Official Directory

District Supt. Rev. J. Thos. Johnson, Kingswood, Ky.  
Asst. Dist. Supt. Rev. H. N. Dickerson, 338 Newman St., Ashland,  
Kentucky.  
District Sec'y. Rev. P. W. Waters, 1723 Holman St., Covington, Ky.  
District Treas. Miss Ora Lunsford, 206 Pike St., Covington, Ky.

## ADVISORY MEMBERS

Rev. C. B. Fugett, 250 Hacksworth St., Ashland, Ky.  
Rev. C. L. Slater, Kingswood, Ky.  
Rev. C. C. Brown, Kingswood, Ky.

## EXAMINING BOARD

Rev. C. B. Fugett, Ashland, Ky. 3 years.  
Rev. J. Thos. Johnson, Kingswood, Ky. 2 years.  
Rev. H. N. Dickerson, Ashland, Ky. 1 year.

## FOREIGN MISSION BOARD

Mrs. I. B. Hill, Kingswood, Ky., Secretary-Treasure.  
Miss Jennie V. Vincient, Soldier, Ky.  
Rev. George Beirnes, Kingswood, Ky.

## HOME MISSION BOARD

J. Thos. Johnson, Kingswood, Ky.  
Rev. P. W. Waters, Covington, Ky.  
Rev. R. G. Finch, Kingswood, Ky.  
Rev. O. A. Morgan, Ashland, Ky.  
Rev. H. N. Dickerson, Ashland, Ky.

## MINISTERS AND DELEGATES TO THE FIFTEENTH ANNUAL ASSEMBLY

Ovade Philips, J. A. Smith, J. F. Carrol, Plennie Williams, Mrs. Myrtle Brown, C. C. Brown, C. W. Duggins, Elmer Hanna, Orvan Keller, Delia Harmon, Mrs. Plennie Williams, E. P. Qualls, Geo. Beirnes, J. T. Johnson, R. G. Finch, L. R. Wade, L. A. Williams, O. A. Morgan, Beeson Yarbrough, W. T. Martin, W. P. Goodman, B. H. Waddell, Mrs. C. L. Slater, Raymond Simpson and Mrs. Raymond Simpson, B. H. Lucas, C. L. Wireman, Howard Bennett, O. C. Holbrook, P. W. Waters, Ora Lunsford, Tillie Lunsford.

## DELEGATES

Ira Shelton, Kingswood Sunday School, Roscoe Kirk, Inez, S. S., Eddie Jackson, Liberty Church and S. S., Mary Qualls, Maysville Church and S. S., Mrs. L. A. Williams, Normal Church, Everett Leadingham, Rush Church, Mrs. M. D. Waddell, Cynthia Church and S. S., Oliver Marsh, Covington S. S., Charles Rose, Covington Church, L. S. Vincent, Soldier Church and S. S., Charles T. Youmans, Latonia Church, Clifford Cramer, Latonia, T. R. Powell, Hitchens Church, Mrs. Cora Savage, Hitchens S. S., Gus Windgassen, Aspen Grove Church and S. S.

## Journal of Proceedings

FIRST BUSINESS SESSION—MONDAY AFTERNOON, SEPTEMBER 15.

The fifteenth annual assembly of the Pilgrim Holiness Church of the Kentucky District convened at Kingswood, Ky., at 2:30 p. m., with the Supt., Rev. J. Thos. Johnson in the chair. Session opened with Song No. 156, Constantly Abiding and No. 131, Jesus is Dearer than ALL. Led in prayer by Rev. C. C. Brown. Rev. W. R. Cox, our General Superintendent, then took the chair. Brother Cox read from the fourth chapter of the Epistle to the Ephesians and expounded the same. Excerpts from the minutes of the last assembly were read. Registration of Ministers and Deaconesses and Delegates.

Moved and supported that the first six seats of the two tiers of seats before the platform be designated as the conference bar. Carried. Moved and supported that the morning session of the Assembly convene at 9:00 and adjourn at 12:00. The afternoon session to convene at 2:30 and adjourn at 5:00. Carried.

Moved and supported that we adopt the rules of order as found in the Manual for the regulation of the General Assembly. Carried.

Moved and supported that the chairman appoint the necessary officers to temporarily fill the vacancies on the Examining Board. Carried. Chairman requests the Superintendent to appoint them.

Reports of Liberty Church read by Eddie Jackson. Accepted as read.

Report of Sister Ovada Phillips read in person. Accepted as read.

Motion to adjourn is in order, dismissed with prayer by Brother Smith.

SECOND SESSION—TUESDAY MORNING, SEPTEMBER 16

On account of the opening of the school a joint meeting of school and assembly was held. Our General Superintendent gave a lecture to the students and pupils, which proved a blessing not only to the school, but to the Assembly as well. At the close of this service a number knelt for prayer. And prayed through to either regeneration or sanctification. There was no business transacted at this meeting. Meeting dismissed by Brother Waddell.

THIRD SESSION—TUESDAY AFTERNOON

Meeting called to order with the General Superintendent in the chair. Sang No. 145, He Abides. Several volunteer prayers were had and concluded by Rev. R. G. Finch. Moved and supported that Rev. W. P. Goodman be given a seat in a seat in the conference bar. Minutes of last session read and accepted. Moved and supported that the election of officers be held at 3:00 Wednesday afternoon. Carried. Report of the General Foreign Missionary

Superintendent read and accepted. Report of Elwood Qualls, pastor of Maysville Church read in person also the reports of Maysville Church read by the Delegate, Mrs. Elwood Qualls. Accepted as read. Report of Rev. and Mrs. Chas. L. Slater read by the latter and accepted. Reports of J. A. Smith read in person and accepted. Report of L. R. Wade read in person and accepted. Report of Rush Church read by delegate, Everett Leadingham and accepted. Report of Plennie Williams, pastor of Toller and Inez Churches read in person also the reports of Inez Church read by the delegate, Mrs. Pearl Williams and accepted. Report of J. F. Carrol read in person and accepted. Report of Sister Harmon read in person and accepted. Report of Orvan Keller read in person and accepted.

Moved and supported that the Resolution to suspend the Evangelistic services and have business sessions instead. Carried. Moved and supported that this resolution be amended and the suspension begin Wednesday night. Carried.

Report of W. T. Martin, pastor of the Mission at Carrollton, Ky., read in person and accepted. Reports of Kingswood Church read by the Alternate, and accepted. Reports of Normal Church read by the delegate, Mrs. L. A. Williams and accepted. The Secretary read a number of reports which were accepted.

Moved and supported that tomorrow morning's session begin at 8:00. Carried. Motion to adjourn is in order. Dismissed by Brother Beirnes.

#### FOURTH SESSION—WEDNESDAY MORNING, SEPTEMBER 17

Session opened with General Superintendent in the chair. Sang song No. 7, Old Time Religion. Led in prayer by Brother Finch, followed by others. Scripture lesson by Brother Cox. He gave us an exposition on the necessity of Gospel preaching. Roll Call. The Secretary read a number of reports to be accepted when corrected. The Secretary read a number of letters, some of them were in the form of reports. These reports accepted.

Moved and supported that this assembly express gratitude for the faithfulness of Rev. Wm. Halladay who leaves the district. Carried.

Moved and supported that the letter from Brother Dulaney be spread on the minutes. Carried. Report of Covington Church read by the delegate, Charles Rose and accepted. Report of Covington Sunday School read by the delegate, Oliver Marsh and accepted. Report of C. L. Wireman, pastor of Covington, Ky., read in person and accepted. Reports of Soldier Church read by the delegate, Mrs. L. S. Vincient and accepted. Report of Hitchens Church read by the delegate, T. R. Powell and Hitchens Sunday School report read by the delegate, Mrs. Cora Savage and accepted. Also Rev. B. H. Lucas, pastor of Hitchens church read his report. Accepted as read. Reports of Willard Church read by the pastor. Rev. Lucas, accepted as read. Verbal report of Latonia Church given by Charles



T. Youmans. Report of C. B. Fugett read in person and accepted. Report of Cynthiana Church read by the delegate, Mrs. B. H. Waddell also the report of Rev. B. H. Waddell pastor of Cynthiana Church read in person and accepted. Report of Sister J. Thos. Johnson, ordained deaconess read in person and accepted. Report of Raymond Simpson pastor of Soldier Church read in person and accepted. Report of Mrs. C. C. Brown read in person and accepted. Report of H. N. Dickerson read in person and accepted.

Moved and supported that Rev. W. P. Goodman be accepted from the Ohio District. Carried.

Moved and supported that Mrs. Elmer Hanna be accepted from the Ohio District. Carried.

#### REPORT OF RESOLUTION COMMITTEE

Moved and supported that Resolution No. 12 be adopted. Carried.

Moved and supported that the local preachers present be given a voice in deliberations of this assembly. Carried.

Moved and supported that Resolution No. 13 be adopted. Moved and supported that resolution No. 13 be referred to the Resolution Committee for revision. Carried.

Moved and supported that Resolution No. 14 be adopted. Carried.

Moved and supported that Resolution No. 15 be adopted. Carried.

Moved and supported that Resolution No. 16 be adopted. Carried.

Moved and supported that Resolution No. 17 be referred to the Committee and they bring in a resolution to cover the retaining of all the resolutions passed from year to year. Carried.

Moved and supported that Resolution No. 18 be adopted. Lost.

Moved and supported that Resolution No. 19 be adopted. Carried.

Moved and supported that Resolution No. 20 be adopted. Carried.

Moved and supported that Resolution No. 21 be adopted. Carried.

Moved and supported that Resolution No. 22 be adopted. Lost.

Moved and supported that Resolution No. 23 be adopted. Carried. Examining Board reports.

Moved and supported that the recommendations for ordination be accepted. Carried.

Moved and supported that the recommendations for license be accepted as presented. Carried.

Motion to adjourn is in order. Dismissed by Brother Fugett.

#### FIFTH SESSION—WEDNESDAY AFTERNOON

Session opened with prayer and song, with the General Superintendent in the chair. Moved and supported that the reports of Ashland Heights Church as read by the pastor be accepted as read. Carried.

Moved and supported that the Sunday School report of Kingswood Church as read by the delegate, Mrs. Shoemaker be accepted as read. Carried.

Moved and supported that the reports of King's Chapel Church read by the delegate, O. C. Holbrook be accepted as read. Carried.

Report of O. C. Holbrook read in person and accepted. Reports of Aspin Grove Church as read by the delegate, Gus Windgassen accepted as read. Report of Rev. Geo. Beirnes read in person and accepted.

Moved and supported that we excuse Brother Cox to permit him to catch the 5:05 train home. Carried.

The election of officers is in order, and resulted in the following officers.

Rev. J. Thos. Johnson, Supt. This was made unanimous.

Rev. H. N. Dickerson, Assistant Superintendent.

Moved and supported that the rules be suspended and Rev. P. W. Waters be elected District Secretary, by acclamation. Carried.

Moved and supported the rules be further suspended and Sister Ora. Lunsford be elected District Treasurer by acclamation. Carried.

Advisory members, C. B. Fugett, C. L. Slater and C. C. Brown.

Moved and supported that the person receiving the highest number of votes be elected for three years to the examining board, and the next highest, for one year. Carried.

Member of examining board for three years, Rev. C. B. Fugett.

Member of examining board for one year, Rev. H. N. Dickerson.

Moved and supported that the rules be suspended and the present foreign mission board be elected by acclamation. Carried.

Moved and supported that the rules be further suspended and re-elect the two members to the home mission board by acclamation. Carried.

Moved and supported that we further suspend the rules and Rev. H. N. Dickerson be elected State Evangelist. Carried.

Moved and supported that the Superintendent appoint the complete delegation to the General Assembly. Carried.

Moved and supported that Rev. L. A. Williams be ordained. Carried.

Moved and supported that all business be suspended and Brother Cox proceed with the ordination service. Carried.

The following persons were ordained: Rev. Floyd Howell, Rev. B. H. Waddell, Rev. Raymond Simpson, Rev. J. F. Carrol and Rev. L. A. Williams.

After the ordination service business proceeded in regular order.

Report of Elmer Hanna, Superintendent of the Orphanage, read in person and accepted.

Report of Wm. Duncan, pastor of Rush Church read by the Secretary and accepted.

Report of L. A. Williams, pastor of Normal Church read in person and accepted.

Moved and supported that the rules be further suspended and we re-elect the two members to the home mission board by acclamation.

Report of Sister I. B. Hill, Foreign Mission Secretary-Treasurer read in person and accepted.

Motion to adjourn is in order. Dismissed by

#### SIXTH SESSION—WEDNESDAY NIGHT

Session called to order with prayer and song. The Superintendent Brother Johnson is in the chair. Led in prayer by Sister Lunsford. A free will offering was taken to help defray the expense of the assembly which amounted to \$25.00.

Moved and supported that the reading of the minutes be omitted. Carried.

Examining board reports. Moved and supported that the report of the examining board be accepted. Carried.

Moved and supported that the new churches at Latonia, Falmouth, Clay City, Valley Dale, Turkey Creek, also the mission at Cattlesburg and the church at Prestonburg be accepted into the Kentucky District. Carried.

Moved and supported that Resolution No. 9 be adopted. Carried.

Moved and supported that Resolution No. 6 be adopted as revised. Carried.

Moved and supported that Resolution No. 3 be adopted as revised. Carried.

Moved and supported that Resolution No. 13 be adopted as revised. Carried.

Moved and supported that Resolution No. 22 be adopted as revised. Carried.

Moved and supported that the resolution concerning the church school be put in the hands of the proper persons and taken to the General Assembly but not to be presented unless necessary. Carried.

Moved and supported that Resolution No. 20 be accepted as revised. Carried.

Moved and supported that Resolution No. 22 be changed to read, "once a quarter" instead of the second Sunday. Carried.

Moved and supported that the two General Superintendents write a foreword each for the minutes. Carried.

Report of the District Secretary read and accepted.

Report of the District Superintendent read and accepted.

Moved and supported that September 1, 1925 be set as the date for the next assembly. Hitchens was selected as the place of the Assembly.

Moved that we adjourn to meet at Hitchens, Ky., on September 1, 1925.

A rising vote of appreciation was taken for the way this assembly was taken care of by the Kingswood church and school.

This assembly was dismissed with an old fashioned healing service.

The following persons received license to preach: Rev. Delmas Weethee, Denver Musser, R. L. Smith, Victory Lacky, Bennie Lowe, O. H. Duncan, Howard S. Bennett, Mrs. L. A. Williams, J. A. Wisner, Bertha Kingbaum, Mary Koon.

The following ministers to be ordained: Rev. Earl Dulaney, Rev. Charles E. Foe, Rev. B. H. Waddell, Rev. Raymond Simpson, Rev. J. E. Fry, Rev. Floyd Howell, Rev. J. F. Carrol, Rev. L. A. Williams.



## Resolutions Adopted and Retained by the Fifteenth Assembly

### RESOLUTION No. 1

Resolved: That each Sunday School throughout the district adopt the birthday offering plan. Said offerings to be used for the support of our orphanage at Kingswood.

### RESOLUTION No. 2

Resolved: That each Church and Sunday School in the district on the first Sunday in each month, lift an offering for foreign missions.

### RESOLUTION No. 3

Resolved: That we as a district raise \$1700.00 for the support of our District Superintendent. To be raised as follows: Each licensed and ordained minister in the district to be assessed \$12.00 per annum. The balance to be raised according to the assessable membership of each church on a basis of \$2.00 per assessable member per annum. Should there be a failure on the part of either ministers or churches to pay their assessments, the deficiency shall be raised on the assembly floor. We further recommend that each church raise a free will offering for the Superintendent on his quarterly visit to the churches. ALL monies raised for the Superintendent to be forwarded to the district Treasurer.

### RESOLUTION No. 4

Resolved that we raise a Home Mission Fund to finance the state work. Said fund to be raised by apportioning each church on a basis of \$1.00 per assessable member per annum.

### RESOLUTION No. 5

Resolved: That each member in good and regular standing and financially able shall be termed an assessable member and all others non-assessable.

### RESOLUTION No. 6

Resolved: That in order to keep our state work moving, that all churches and preachers pay their assessments quarterly and in advance.

### RESOLUTION No. 7

Resolved: That each local church raise a special offering for the printing of the minutes. And the balance to be paid out of the District Treasury.

RESOLUTION No. 8

Resolved: That the Kentucky District Treasury tithe 10 per cent of its gross receipts into the General Church Treasury.

RESOLUTION No. 9

Resolved: That each minister, including local preachers pay \$2.00 per annum to the District Secretary for his services.

RESOLUTION No. 10

Resolved: That when an ordained or licensed minister fails to attend the district assembly or to pay his assessments without providing a reasonable excuse, he shall be required to give an explanation to the district council and if no reasonable excuse be given, in two offences his credentials be revoked.

RESOLUTION No. 11

Resolved: That no pastor take over two revivals during an assembly year. And only then with the consent of his local church. Providing his local church supports him in full.

RESOLUTION No. 12

Resolved: That no person be granted license to preach or renewal of credentials who does not believe in and practice the Bible doctrine of tithing.

RESOLUTION No. 13

Resolved: That this assembly provide a way to evangelize the colored population of this district.

RESOLUTION No. 14

Resolved: That all resolutions be retained from year to year unless revoked or revised by special act of the assembly.

RESOLUTION No. 15

Resolved: That the second Sunday of each quarter that each local church take up a free will offering for the support of the Bethel Orphanage.

RESOLUTION No. 16

Resolved: That the chairman appoint a committee to draft report blanks to cover the work of our district.

RESOLUTION No. 17

Resolved: That the delegation to the General Assembly be authorized to invite our next General Assembly to Kingswood.

RESOLUTION No. 18

Resolved: That we appeal to the General Assembly to adopt a rule that no district Superintendent be allowed to hold office longer than four years.

#### RESOLUTION No. 19

Resolved: That the Kentucky District go on record as opposing any change in the present plans, policies, and high standard of Kingswood College.

Be it further resolved: That we oppose any plan that would move Kingswood College from its present location.

#### RESOLUTION No. 20

Resolved: That Kingswood be made the Kentucky State Camp.

### District Superintendent's Report

To the Kentucky State Assembly, Convened at Kingswood, Ky., September 15, 19 and 24.

Gospel Greetings:—

The past year has been one of many battles, and many victories, and in many respects, it has been the best year of my life. It truly has been a pleasure to labor with the Godly, self-sacrificing pastors, evangelists, and workers of the District. We have pulled together, and GOD has given us the victory, bless HIS dear name.

The reports from the different churches, show an increase on most every line, the pastors, and workers, are visiting and praying in the homes, and cottage prayer meetings are becoming more numerous, and Young People's Societies are being organized, and good substantial members are being taken into the Church, and the Sunday Schools are being well attended.

A building program has been on foot during the year. Three new buildings have been finished, and are now occupied, and two others are under construction. The Church at Cynthiana, have been using their new Church several months. The Church at Toler, are now enjoying their well finished building, and the cozy little Church at Trace, was dedicated, July 13. The Churches at Aspin Grove and Prestonburg, are under construction. The church at Fairview, has been so completely overhauled, until it looks like new.

Five new churches have been organized during the year, through the labors of the Keller-Waddell Evangelistic Party, a Church of 23 members was organized at Falmouth. A Church of 11 members was organized at Prestonburg through the efforts of Brother Leonard Bowling, and a third organization was perfected by Sister Delia Harmon, at Valley View and the Fourth Church was the result of the labors of the Keller-Waddell Party, at Clay City, and the Fifth Organization was through the untiring efforts of Rev. C. L. Wireman, at Latonia, and this little band brought with them a substantial building, with only a small debt on it.

I have been privileged to engage in five revivals, and have visited and held business meetings in most of the churches, four times.

18A

| PASTOR'S<br>REPORT<br>NAME OF<br>CHURCH | NAME OF PASTOR    | Sermons<br>Preached | Church Prayer<br>Meetings | Cottage Prayer<br>Meetings | Calls Made | Revivals Conducted<br>or Assisted in | Professed<br>Regeneration | Professed<br>Sanctification | Baptisms | Children Dedicated | Cases of Healing | Marriages | Funerals | Pastors<br>Support | Gifts and<br>Donations | Total<br>Support | Subscriptions to<br>Advocate | New Chs. Organized | Licensed | Local | Statistical Report | Number<br>Members<br>on Roll | Dropped from Roll | Transferred by Letter | Total Num. Removals | Number Additions<br>by Letter | Number Additions<br>Professions Faith | Total Number<br>Additions | Present Membership | Number Gained | Number Lost | Number Revivals | Number Professed<br>Regeneration | Number Professed<br>Sanctification | Number anointed<br>for Healing | Number Baptisms | Number Preaching<br>Services | Number Church<br>Prayer Meetings | Number Cottage<br>Prayer Meetings | Total Number<br>Services |     |  |
|---|-------------------|---------------------|---------------------------|----------------------------|------------|--------------------------------------|---------------------------|-----------------------------|----------|--------------------|------------------|-----------|----------|--------------------|------------------------|------------------|------------------------------|--------------------|----------|-------|--------------------|------------------------------|-------------------|-----------------------|---------------------|-------------------------------|---------------------------------------|---------------------------|--------------------|---------------|-------------|-----------------|----------------------------------|------------------------------------|--------------------------------|-----------------|------------------------------|----------------------------------|-----------------------------------|--------------------------|-----|--|
| Aspin Grove                             | P. W. Waters      | 74                  |                           | 2                          | 20         | 2                                    | 18                        |                             |          |                    |                  |           |          | 9526               |                        |                  |                              |                    |          |       |                    | 26                           |                   |                       |                     |                               |                                       | 28                        |                    | 2             |             |                 |                                  |                                    |                                |                 |                              |                                  |                                   |                          | 157 |  |
| Ashland 1st Church                      | O. A. Morgan      | 10                  | 2                         |                            |            |                                      |                           |                             |          |                    |                  |           |          |                    |                        |                  |                              |                    |          |       |                    | 52                           | 6                 | 3                     | 11                  | 2                             |                                       | 41                        |                    | 11            |             |                 |                                  |                                    |                                |                 |                              |                                  |                                   |                          | 197 |  |
| Ben's Run                               |                   | 15                  | 25                        | 20                         | 40         | 1                                    | 10                        | 5                           |          |                    |                  |           |          |                    |                        |                  |                              |                    |          |       |                    |                              |                   |                       |                     |                               |                                       |                           |                    |               |             |                 |                                  |                                    |                                |                 |                              |                                  |                                   |                          | 10  |  |
| Bartersville                            | C. P. Snapp       | 27                  |                           |                            | 26         | 1                                    | 1                         |                             |          |                    |                  |           |          |                    |                        |                  |                              |                    |          |       |                    |                              |                   |                       |                     |                               |                                       |                           |                    |               |             |                 |                                  |                                    |                                |                 |                              |                                  |                                   |                          |     |  |
| Clarks Hill                             | Harvey Kelley     | 108                 | 30                        | 1                          | 107        | 7                                    | 129                       | 22                          | 3        | 11                 | 1                | 2         | 126520   | 17000              | 143520                 |                  | 1                            | X                  |          |       |                    | 106                          | 6                 |                       |                     | 1                             | 13                                    | 5                         | 11                 | 6             |             | 1               | 8                                | 5                                  |                                | 10              | 2                            |                                  | 12                                |                          |     |  |
| Covington                               | C. L. Wireman     | 288                 | 52                        | 70                         | 45         | 8                                    | 735                       | 480                         | 50       | 25                 | 21               | 2         | 130000   | 45040              | 175040                 |                  | 7                            | 2                  | X        |       |                    | 105                          | 4                 | 4                     | 1                   | 7                             | 52                                    | 58                        | 163                | 58            |             | 2               | 113                              | 78                                 | 38                             | 21              | 3                            | 150                              | 50                                | 80                       | 280 |  |
| Cynthiana                               | B. H. Waddell     | 50                  |                           |                            | 40         | 2                                    | 10                        | 8                           |          |                    |                  |           | 16225    | 18148              |                        |                  |                              |                    |          |       |                    |                              |                   |                       |                     |                               |                                       |                           |                    |               |             |                 |                                  |                                    |                                |                 |                              |                                  |                                   |                          |     |  |
| Clay City                               | Orvan Kellar      | 128                 | 6                         | 19                         | 70         | 9                                    | 97                        | 4                           |          |                    |                  | 4         | 55763    |                    |                        | 55773            |                              |                    |          |       |                    |                              |                   |                       |                     |                               |                                       |                           |                    |               |             |                 |                                  |                                    |                                |                 |                              |                                  |                                   |                          |     |  |
| Carrollton                              | W. T. Martin      |                     |                           |                            |            |                                      |                           |                             |          |                    |                  |           |          |                    |                        |                  |                              |                    |          |       |                    |                              |                   |                       |                     |                               |                                       |                           |                    |               |             |                 |                                  |                                    |                                |                 |                              |                                  |                                   |                          |     |  |
| Cattlettsburg                           | J. D. Hamilton    |                     |                           |                            |            |                                      |                           |                             |          |                    |                  |           |          |                    |                        |                  |                              |                    |          |       |                    |                              |                   |                       |                     |                               |                                       |                           |                    |               |             |                 |                                  |                                    |                                |                 |                              |                                  |                                   |                          |     |  |
| Dalesburg                               | S. R. Maddox      | 92                  | 49                        | 3                          | 25         | 4                                    | 31                        | 28                          | 6        |                    |                  | 1         | 17103    | 5847               | 22950                  |                  | 2                            | X                  |          |       |                    | 28                           |                   |                       |                     |                               |                                       |                           |                    |               |             |                 |                                  |                                    |                                |                 |                              |                                  |                                   |                          |     |  |
| Fairview                                |                   | 15                  | 25                        | 10                         | 10         | 2                                    | 18                        | 5                           |          |                    | 6                | 2         |          |                    |                        |                  |                              |                    |          |       |                    | 11                           |                   |                       |                     |                               |                                       |                           |                    |               |             |                 |                                  |                                    |                                |                 |                              |                                  |                                   |                          |     |  |
| Falmouth                                | B. H. Waddell     | 40                  |                           |                            | 25         | 1                                    | 108                       | 40                          |          |                    |                  |           | 10000    | 1000               | 16473                  | 10000            |                              |                    | X        |       |                    | 23                           |                   |                       |                     |                               |                                       |                           |                    |               |             |                 |                                  |                                    |                                |                 |                              |                                  |                                   |                          |     |  |
| Grahn                                   | Wm. Duncan        | 77                  |                           |                            | 85         | 5                                    | 8                         | 5                           |          |                    | 11               | 2         | 15473    | 1000               | 16473                  |                  |                              |                    |          | X     |                    |                              |                   |                       |                     |                               |                                       |                           |                    |               |             |                 |                                  |                                    |                                |                 |                              |                                  |                                   |                          |     |  |
| Hitchins                                | H. B. Lucas       | 100                 | 75                        | 10                         | 75         | 3                                    | 70                        | 20                          | 8        |                    | 5                | 3         | 6        | 49192              | 9493                   | 68685            |                              |                    |          |       | X                  | 25                           | 12                |                       | 12                  |                               | 2                                     | 2                         | 15                 | 10            | 1           | 70              | 20                               | 1                                  | 104                            | 104             | 25                           | 209                              |                                   |                          |     |  |
| Hopewell                                | Geo. Burnside     | 15                  | 10                        | 5                          | 30         |                                      |                           |                             |          |                    |                  |           |          |                    |                        |                  |                              |                    |          |       |                    |                              |                   |                       |                     |                               |                                       |                           |                    |               |             |                 |                                  |                                    |                                |                 |                              |                                  |                                   |                          |     |  |
| Inez                                    | P. Williams       | 95                  | 50                        | 28                         | 94         | 4                                    | 30                        | 5                           | 1        | 2                  | 2                | 1         | 40072    | 6000               | 46072                  |                  | 4                            | X                  |          |       |                    | 26                           | 5                 |                       |                     | 3                             | 3                                     | 25                        |                    |               |             |                 |                                  |                                    |                                |                 |                              |                                  |                                   |                          |     |  |
| Kingswood                               | C. G. Taylor      |                     |                           |                            |            |                                      |                           |                             |          |                    |                  |           |          |                    |                        |                  |                              |                    |          |       |                    |                              |                   |                       |                     |                               |                                       |                           |                    |               |             |                 |                                  |                                    |                                |                 |                              |                                  |                                   |                          |     |  |
| King's Chapel                           | Chester Armstrong | 16                  |                           | 2                          |            |                                      | 1                         | 1                           | 1        | 1                  |                  |           | 5660     |                    | 5660                   |                  |                              | X                  |          |       |                    | 13                           |                   |                       |                     |                               |                                       |                           |                    |               |             |                 |                                  |                                    |                                |                 |                              |                                  |                                   |                          |     |  |
| Liberty                                 | P. Buffington     | 46                  |                           |                            | 3          | 6                                    | 48                        | 8                           |          |                    | 1                |           | 6300     |                    |                        | 133              |                              |                    | X        | X     |                    | 30                           | 8                 | 2                     | 10                  |                               | 1                                     | 1                         | 21                 |               | 9           | 1               | 6                                | 2                                  |                                |                 | 35                           | 40                               | 6                                 | 75                       |     |  |
| Latonia                                 | C. L. Wireman     |                     |                           |                            |            |                                      |                           |                             |          |                    |                  |           |          |                    |                        |                  |                              |                    |          |       |                    |                              |                   |                       |                     |                               |                                       |                           |                    |               |             |                 |                                  |                                    |                                |                 |                              |                                  |                                   |                          |     |  |
| Maysville                               | Elwood Qualls     | 135                 | 40                        | 25                         | 250        | 6                                    | 400                       | 87                          |          | 25                 | 3                | 5         | 84904    | 50245              | 135149                 |                  |                              | X                  |          |       |                    | 84                           |                   |                       | 1                   | 18                            | 19                                    | 103                       | 19                 | 3             | 74          | 112             | 6                                |                                    |                                | 178             | 54                           | 23                               | 257                               |                          |     |  |
| Normal                                  | J. L. Williams    | 71                  | 26                        | 16                         | 120        | 4                                    | 72                        | 31                          |          |                    | 6                | 1         | 107600   | 15000              | 122600                 |                  | 8                            |                    | X        | X     |                    | 50                           | 4                 |                       | 4                   | 1                             | 6                                     | 7                         | 53                 | 3             | 2           | 45              | 19                               | 10                                 | 1                              | 126             | 44                           | 16                               | 186                               |                          |     |  |
| Prestonsburg                            | Leonard Bowling   | 36                  | 15                        | 15                         | 40         | 2                                    | 8                         | 6                           |          |                    |                  | 3         | 20700    |                    | 20700                  |                  |                              |                    | X        |       |                    | 11                           |                   |                       |                     |                               |                                       |                           |                    |               |             |                 |                                  |                                    |                                |                 |                              |                                  |                                   |                          |     |  |
| Rockdale                                | O. A. Morgan      | 155                 | 14                        | 4                          | 120        | 5                                    | 134                       |                             |          |                    |                  | 3         | 2        | 46495              | 2500                   | 48995            |                              | 3                  | X        |       |                    |                              |                   |                       |                     |                               |                                       |                           |                    |               |             |                 |                                  |                                    |                                |                 |                              |                                  |                                   |                          |     |  |
| Rush                                    | Wm. Duncan        | 60                  | 20                        | 5                          | 50         | 3                                    | 30                        | 18                          | 6        |                    | 7                | 1         | 4        | 25370              |                        | 25370            |                              |                    |          | X     |                    | 26                           |                   |                       |                     |                               |                                       |                           |                    |               |             |                 |                                  |                                    |                                |                 |                              |                                  |                                   |                          |     |  |
| Sparta                                  | J. H. Morgan      | 15                  | 9                         | 7                          | 20         | 1                                    | 2                         | 1                           |          |                    | 1                |           |          |                    |                        |                  |                              |                    |          | X     |                    |                              |                   |                       |                     |                               |                                       |                           |                    |               |             |                 |                                  |                                    |                                |                 |                              |                                  |                                   |                          |     |  |
| Soldier                                 | Raymond Simpson   | 102                 | 51                        | 64                         | 76         | 4                                    | 49                        | 14                          |          | 1                  | 2                | 3         | 3        | 60169              | 5845                   | 61640            |                              |                    |          | X     |                    | 26                           | 1                 | 1                     | 3                   | 1                             | 4                                     | 5                         | 28                 | 2             | 2           | 49              | 14                               | 7                                  | 102                            | 51              | 94                           | 247                              |                                   |                          |     |  |
| Smokey Valley                           |                   |                     |                           |                            |            |                                      |                           |                             |          |                    |                  |           |          |                    |                        |                  |                              |                    |          |       |                    |                              |                   |                       |                     |                               |                                       |                           |                    |               |             |                 |                                  |                                    |                                |                 |                              |                                  |                                   |                          |     |  |
| Toler                                   | J. W. Jesse       |                     |                           |                            |            |                                      |                           |                             |          |                    |                  |           |          |                    |                        |                  |                              |                    |          |       |                    |                              |                   |                       |                     |                               |                                       |                           |                    |               |             |                 |                                  |                                    |                                |                 |                              |                                  |                                   |                          |     |  |
| Trace                                   | P. Williams       | 13                  | 10                        | 4                          | 13         | 2                                    | 7                         | 1                           |          |                    | 2                |           | 7800     | 1000               | 8800                   |                  | 4                            | X                  |          |       |                    | 12                           |                   |                       |                     |                               |                                       |                           |                    |               |             |                 |                                  |                                    |                                |                 |                              |                                  |                                   |                          |     |  |
| Turkey Creek                            | Mattie Pope       | 19                  | 40                        | 2                          | 27         | 1                                    | 30                        | 10                          | 6        |                    | 10               |           | 4134     | 1860               | 5994                   |                  | 2                            | 1                  | X        |       |                    |                              |                   |                       |                     |                               |                                       |                           |                    |               |             |                 |                                  |                                    |                                |                 |                              |                                  |                                   |                          |     |  |
| Valley View                             | Ovada Phillips    | 73                  | 43                        | 23                         | 49         | 3                                    | 79                        | 43                          | 3        | 15                 | 2                | 2         | 12586    | 7836               | 20432                  |                  | 2                            | 1                  | X        |       |                    |                              |                   |                       |                     |                               |                                       |                           |                    |               |             |                 |                                  |                                    |                                |                 |                              |                                  |                                   |                          |     |  |
| Willard                                 | Delia Harmon      | 317                 | 6                         | 14                         | 150        | 12                                   | 400                       | 149                         | 6        | 4                  | 27               | 2         | 48300    | 2000               | 86300                  |                  |                              |                    |          | X     |                    |                              |                   |                       |                     |                               |                                       |                           |                    |               |             |                 |                                  |                                    |                                |                 |                              |                                  |                                   |                          |     |  |
| Total                                   | H. B. Lucas       | 33                  | 29                        | 5                          | 35         | 2                                    | 12                        | 4                           |          |                    |                  |           |          |                    |                        |                  |                              |                    |          |       |                    | 654                          | 42                | 13                    | 52                  | 35                            | 111                                   | 111                       | 651                | 103           | 34          | 30              | 638                              | 255                                | 113                            | 72              | 1429                         | 726                              | 444                               | 2521                     |     |  |

Annual Report of the Kentucky District, Pilgrim Holiness Church, 1924.

J. Thos. Johnson, District Superintendent



people's meetings 5, calls 50, calls made on sick 15, jail and shop meetings 7, cash received \$375. Rachel Brown.

Meetings assisted in 4, sermons 9, calls made on sick 8, other calls 5, jail meeting 1, cash received \$74. Ora Lunsford, deaconess.

Meetings assisted in 4, sermons 7, calls made on sick 8, other calls 7, cash received \$74. Tillie Lunsford, deaconess.

## District Secretary's Report

### RECEIPTS AS FOLLOWS

|                            |          |
|----------------------------|----------|
| General Supt. ....         | \$ 65.25 |
| Dist. Supt. Churches.....  | 374.12   |
| Dist. Supt. Preachers..... | 513.50   |
| Dist. Secy. ....           | 48.00    |
| Home Missions .....        | 368.32   |
| Miscellaneous .....        | 30.00    |

---

Total.....\$1399.19

### DISBURSEMENTS AS FOLLOWS

|                             |          |
|-----------------------------|----------|
| General Supt. ....          | \$ 65.25 |
| Dist. Supt. Churches.....   | 374.12   |
| Dist. Supt. Preachers.....  | 513.50   |
| Dist. Secy. ....            | 48.00    |
| Home Mission Interests..... | 106.65   |
| Miscellaneous to Supt. .... | 30.00    |
| Incidentals .....           | 100.00   |

---

Total.....\$1237.52

---

Balance.....\$ 161.67

## Foreign Mission Sec'y-Treas. Report

|                       |          |
|-----------------------|----------|
| Covington .....       | \$ 36.86 |
| Kingswood .....       | 148.57   |
| Dalesburg .....       | 3.00     |
| Soldier .....         | 57.56    |
| Aspin Grove .....     | 128.40   |
| Rush .....            | 8.60     |
| Rockdale .....        | 18.50    |
| Grahns .....          | 16.50    |
| Maysville .....       | 33.79    |
| Willard .....         | 14.40    |
| Kings Chapel .....    | 5.00     |
| Ashland Heights ..... | 32.00    |
| Miscellaneous .....   | 421.14   |

---

Total.....\$924.31

Mrs. I. B. Hill Secretary Treasurer.

Sermons 155, church prayer meetings 19, cottage prayer meetings 14, calls made 148, revivals conducted or assisted in 16, seekers 1224, poor house meetings 2, annointed for healing 17, street meetings 8, jail meetings 2, cash received for support \$1477.41. C. C. Mourer.

Sermons preached 2. Beeson Yarbrough.

Sermons 128, church prayer meetings 6, cottage prayer meetings 19, revivals conducted or assisted in 9, reg. 97, sanct. 4, cases of healing 4, funerals 4, cash received \$557.63. W. T. Martin.

Sermons 317, church prayer meetings 6, cottage prayer meetings 14, calls 150, revivals conducted or assisted in 12, professions 549, baptisms 6, children dedicated 4, cases of healing 27, funerals 2, cash received \$863.00. Delia Harmon.

Sermons 111, church prayer meetings 24, revivals 4, reg. 125, sanct. 20, children dedicated 1, cases of healing 4, funerals 1, cash received \$644.50. J. F. Carrol.

Sermons 157, missionary sermons 45, revivals 9, prof. 546, cases of healing 35, cash received \$269.50, missionary money raised \$6135.00, subscriptions to Advocate 25. C. L. Slater.

Sermons 14, church prayer meeting 1, revivals 1, cases of healing 1, cash received as teacher, \$260.00, gifts \$10.00, number of subscriptions to Advocate 54. J. A. Smith.

Sermons 20, revivals assisted in 6, reg. 60. Mrs. C. L. Slater.

Sermons 40, church prayer meetings 10, calls 50, revivals 3, reg. 8, sanct. 2, cases of healing 2, funerals 2, cash received \$25.00. H. N. Brown.

Sermons 12, cottage prayer meetings 8, calls 41, revivals assisted in 3, reg. 5, cases of healing 2, funerals 1, cash received \$37.80. A. M. Perry.

Sermons 140, calls 40, revivals 5, reg. 6, funerals 2, cash received \$418.44. J. C. Baynum.

Sermons 155, church prayer meetings 14, cottage prayer meetings 4, calls 120, revivals 5, reg. 134, funerals 2, cash received \$489.95, subscriptions to Advocate 3. A. O. Morgan.

Sermons 3, cottage prayer meetings 6, calls 2, reg. 1. O. C. Holbrook.

Sermons 256, revivals 13, reg. 200, sanct. 200, children dedicated 11, cases of healing 50, cash received \$1675.00, subscriptions to the Advocate 9, amount raised for foreign missions \$1400.00. Geo. Beirnes.

Revivals 6, professions 1000, cash received \$2000.00. E. Dulaney.

Sermons 98, cottage prayer meetings 12, calls 60, revivals conducted and assisted in 6, prof. 225, miles traveled 2575, cash received \$705.21, subscriptions 5. Orvan Keller.

Sermons 15, church prayer meetings 12, cottage prayer meetings 6, revivals 3, reg. 15, sanct. 5, funerals 1. E. R. Roberts.

Meetings assisted in 9, sang in 20 churches, prayer and young

# Appointment schedule for P. H. Churches, Ky.

District year ending August 31, 1925

| CHURCH          | PASTOR            | Total<br>Members | Non-Assessable | Assessable | Superintendent | Assessment<br>H. M. | General Superintendent | Total per<br>Quarter | Total per<br>Annum |
|-----------------|-------------------|------------------|----------------|------------|----------------|---------------------|------------------------|----------------------|--------------------|
| Ashland Heights | O. A. Morgan ✓    | 41               | 11             | 30         | 15.00          | 7.50                | 2.07                   | 24.75                | 98.25              |
| Aspin Grove     |                   | 28               | 4              | 24         | 12.00          | 6.00                | 1.75                   | 19.75                | 79.00              |
| Ben's Run       |                   | 10               |                | 10         | 5.00           | 2.50                | .62                    | 8.12                 | 32.48              |
| Barbersville    | H. C. Snapp       |                  |                |            |                |                     |                        |                      |                    |
| Clark Hill      | Harve Kelley      | 18               | 18             | 9.00       | 4.50           | 1.12                | 14.62                  | 58.50                |                    |
| Covington       | C. L. Wireman     | 116              | 61             | 55         | 27.50          | 13.75               | 7.25                   | 48.50                | 194.00             |
| Cynthiana       | B. H. Waddell     | 166              | 91             | 75         | 37.50          | 18.75               | 10.37                  | 66.62                | 266.50             |
| Clay City       | B. H. Waddell     | 12               | 12             | 6.00       | 3.00           | .75                 | 9.75                   | 39.00                |                    |
| Dalesburg       | S. R. Maddox      | 26               | 7              | 19         | 9.50           | 4.75                | 1.62                   | 15.87                | 63.50              |
| Fairview        | John McNurlin     | 12               | 12             | 6.00       | 3.00           | .75                 | 9.75                   | 39.00                |                    |
| Falmouth        | B. H. Waddell     | 23               | 6              | 17         | 8.50           | 4.25                | 1.47                   | 14.22                | 56.90              |
| Grahns          | Wm. Duncan        | 14               | 4              | 10         | 5.00           | 2.50                | .87                    | 8.37                 | 33.50              |
| Hitchins        | B. H. Lucas ✓     | 31               | 16             | 15         | 7.50           | 3.75                | 1.43                   | 12.68                | 50.75              |
| Hopewell        | Geo. Burnside     | 7                | 7              | 3.50       | 1.75           | .43                 | 5.68                   | 22.72                |                    |
| Inez            | J. F. Carrol      | 25               |                |            |                |                     |                        |                      |                    |
| Kingswood       | C. G. Taylor ✓    | 102              | 20             | 82         | 41.00          | 20.50               | 6.37                   | 67.87                | 271.50             |
| Kings Chapel    | Chester Armstrong | 13               | 6              | 7          | 3.50           | 1.75                | .81                    | 6.06                 | 24.25              |
| Liberty         | Floyd Howell      | 22               | 8              | 14         | 7.00           | 3.50                | 1.37                   | 11.87                | 47.48              |
| Latonia         | C. L. Wireman     | 16               |                |            |                |                     |                        |                      |                    |
| Maysville       | Pleennie Williams | 102              | 62             | 40         | 20.00          | 10.00               | 6.37                   | 36.37                | 145.50             |
| Normal          | L. A. Williams    | 57               | 26             | 31         | 15.50          | 7.75                | 4.06                   | 27.31                | 109.25             |
| Prestonsburg    | Leonard Bowling   | 11               | 11             | 5.50       | 2.75           | .68                 | 8.94                   | 35.16                |                    |
| Rockdale        | Floyd Howell      | 21               | 8              | 13         | 6.50           | 3.25                | 1.31                   | 11.06                | 44.25              |
| Rush            |                   | 52               | 26             | 26         | 13.00          | 6.50                | 3.25                   | 22.75                | 91.00              |
| Sparta          | J. H. Morgan      |                  |                |            |                |                     |                        |                      |                    |
| Soldier         | Raymond Simpson ✓ | 28               | 8              | 20         | 10.00          | 5.00                | 1.75                   | 16.75                | 67.00              |
| Toller          | Ovada Phillips    |                  |                |            |                |                     |                        |                      |                    |
| Trace           | Mattie Pope       | 16               | 6              | 10         | 5.00           | 2.50                | 1.00                   | 8.50                 | 34.00              |
| Turkey Creek    | Ovada Phillips    | 20               | 4              | 16         | 8.00           | 4.00                | 1.25                   | 13.25                | 53.00              |
| Willard         | B. H. Lucas       | 15               | 5              | 10         | 5.00           | 2.50                | .93                    | 8.43                 | 33.75              |
| Valley Dale     | Delia Harmon ✓    | 20               |                | 20         | 10.00          | 5.00                | 1.25                   | 16.25                | 65.00              |
| Totals          |                   | 1024             |                |            |                |                     |                        |                      |                    |

1 2 3 4 5 6 7 8

Columns Nos. 4, 5, 6, 7 are quarterly assessments.

laid them before God, wept and prayed over same until HE DIRECTED, then answered them. The result has been that within less than two years the Missionary membership has nearly doubled. One district has tripled the membership, and, knowing the standard to which we hold the natives, you can appreciate fully what this means to our church.

With this I have held two revivals and one-half, besides visiting scores of places lecturing on foreign missions. In each revival we get missions in every sermon and by the time the meeting closes it has been a Missionary revival with Missionary converts, if not so many new births. In one revival God gave us the Methodist pastor as a Missionary, his passage, and his support at \$100 a month. This cost our church nothing, but gives it all the credit.

In all my life I have never had such battles with the enemy, nor such wonderful victories. Have had to fight for health and strength, but have everything for which to praise God. Jesus saves me from all sin and sanctifies me wholly just now. He is my healer and constantly am I believing for divine health. More than ever do I see Him my every need—mental, spiritual, financial and physical.

Respectfully submitted,

R. G. FINCH.

## Evangelist's and Unstationed Reports

Services engaged in 11, sermons preached 49, reg. 53, sanct. 4.  
R. Gibhart.

Sermons preached 45, church prayer meetings 18, cottage p. m. 7, calls 50, revivals assisted in 1, reg. 7, sanct. 2, children dedicated 1, cases of healing 2, funerals 2, cash received for support \$25.00  
Thomas Bishop.

Services engaged in 138, sermons preached 31, ch. prayer meetings 66, cottage prayer meetings 18, revivals assisted in 4, reg. 13, sanct. 7.  
V. Posey.

Sermons preached 105, miles traveled 4700, funerals 1, amount received for support \$1230.50. Floyd Bostick.

Revivals conducted 14, sermons preached 200, professions 1328, amount received for support \$2062.50. C. B. Fugett and wife.

Sermons 246, professions 400, miles traveled 2500, revivals conducted or assisted in 7. C. C. Brown.

Sermons 6, church prayer meetings 8, cottage prayer meetings 4, calls made 75, revivals assisted in 2, reg. 12, sanct 5, cases of healing 6. Mrs. Myrtle Brown.

Sermons preached 204, calls made 100, revivals 13, reg. 450, sanct. 255, cases of healing 31, cash received \$1472.20 gifts \$50.00 total support \$1522.20. Subscriptions to Advocate 20, new churches organized 1. H. N. Dickerson.

Have preached 185 times, 117 professed Regeneration, and 78 Sanctification. Have traveled about 5,000 miles, traveling expenses \$236.00. Have received as support from Revivals, Churches, and Preachers, \$1,378.73. Respectfully submitted,

J. THOS. JOHNSON, Supt. Ky. Dist.

## Report of R. G. Finch, General Missionary Superintendent, for 1923-24

I have not traveled 17,000 miles as I did last year, however, believe God has helped me to accomplish more.

Not being able to do the work of two or three men, I settled to do the one most necessary, first, because my physical strength was so limited I could not stand the necessary travel, and, second, because I could reach more souls by the plan adopted.

It is necessary to visit every church, convention and camp meeting in behalf of Missionary work, and, in fact, of any other church interest. To do this I found that it took all of my time. I could get money, but was failing in the *more important duties of my office*. After waiting on God for days and weeks He brought to my mind a statement of one of our leading evangelists and teachers—"IT IS BETTER TO GET TEN MEN TO WORK THAN TO TRY TO DO THE WORK OF TEN MEN." At once I began getting in touch with every returned Missionary, evangelist, and pastor who, I believed, were burdened for Missionary work. These were slated for every camp, convention, and revival possible. We planned with State Superintendents and pastors for two-and-three-day Missionary Conventions, sending men and women to fill such places as were opened. Not all to whom we appealed for these Conventions responded favorably. Excuses were as freely made as were invitations sent; however, it is working fine where doors are opened and more are constantly opening.

We wrote to several National Holiness Association Camps and received permission to send Missionaries to same with the understanding that no offering be taken. These Missionaries made many friends and received some money and one camp called them as evangelists for next year. With this plan we will get financial help in the near future.

By having these Missionaries travel, it left me to do the thing I feel is really my work; i. e., to more nearly superintend the foreign work instead of spending all my time as financial agent in the homeland. I believe it has pleased God, also the most spiritual people, as it meant *souls*. Glory to God!

My soul has thrilled as I have worked, prayed and planned with the precious Missionaries abroad. Their letters come thick and fast at times. Their problems were laid before me carefully, and I

CHURCH  
FINANCIAL  
REPORT

| CHURCH<br>FINANCIAL<br>REPORT | Amount Cash<br>Brought Forward | Amount of<br>Offerings Received | Total Amount<br>Cash Received | Cash Paid Out<br>to Pastor | Cash Paid to<br>General Supt. | Cash Paid to<br>District Supt. | Cash Paid to<br>Revivals | Cash Paid to<br>Home Missions | Cash Paid to<br>Foreign Missions | Cash Paid to<br>Orphanage | Cash Paid to<br>Rescue Work | Cash Paid to<br>Educational Work | Cash Paid to<br>Publishing Int. | Paid to<br>Incidental Exp. | Paid on Buildings | Cash Paid on<br>Improvements | Total Cash<br>Paid Out | Balance Cash<br>in Treasury | Number Church<br>Buildings | Number Parsonages | Amount of Other<br>Property | Total Value of<br>All Property | Total Amount of<br>All Indebtedness | S. S. Report | Number Scholars<br>On Roll | Average<br>Attendance | Number<br>Sessions | Amount Cash<br>Brought Forward | Offerings Received<br>For Year | Total Amount of<br>Cash Received | Cash Paid out<br>Home Missions | Cash Paid to<br>Foreign Missions | Cash Paid to<br>Orphanage | Cash Paid on<br>Donations | Balance Cash<br>in Treasury | INCIDENTALS |      |
|-------------------------------|--------------------------------|---------------------------------|-------------------------------|----------------------------|-------------------------------|--------------------------------|--------------------------|-------------------------------|----------------------------------|---------------------------|-----------------------------|----------------------------------|---------------------------------|----------------------------|-------------------|------------------------------|------------------------|-----------------------------|----------------------------|-------------------|-----------------------------|--------------------------------|-------------------------------------|--------------|----------------------------|-----------------------|--------------------|--------------------------------|--------------------------------|----------------------------------|--------------------------------|----------------------------------|---------------------------|---------------------------|-----------------------------|-------------|------|
| Aspin Grove                   | 1000                           | 53154                           | 53154                         | 10455                      |                               | 1070                           | 34224                    | 2000                          | 12840                            | 115                       |                             | 600                              | 6660                            |                            |                   |                              | 53154                  |                             | 1                          |                   |                             | 800000                         |                                     |              | 60                         | 40                    | 46                 | 565                            | 3540                           | 4105                             |                                |                                  |                           | 1276                      | 2829                        |             |      |
| Ashland 1st Church            |                                | 282298                          | 283298                        | 86708                      | 913                           | 1519                           | 59696                    |                               |                                  |                           |                             |                                  | 90120                           |                            |                   |                              | 282852                 | 446                         | 1                          |                   |                             | 10000                          |                                     |              | 91                         | 128                   | 52                 | 368                            | 12760                          | 13131                            |                                | 3200                             | 3100                      | 369                       | 6462                        |             |      |
| Ben's Run                     |                                |                                 |                               |                            |                               |                                |                          |                               |                                  |                           |                             |                                  |                                 |                            |                   |                              |                        |                             |                            |                   |                             | 10000                          |                                     |              |                            |                       |                    |                                |                                |                                  |                                |                                  |                           |                           |                             |             |      |
| Bartersville                  |                                |                                 |                               |                            |                               |                                |                          |                               |                                  |                           |                             |                                  |                                 |                            |                   |                              |                        |                             |                            |                   |                             | 50000                          |                                     |              |                            |                       |                    |                                |                                |                                  |                                |                                  |                           |                           |                             |             |      |
| Clark's Hill                  |                                |                                 |                               |                            |                               |                                |                          |                               |                                  |                           |                             |                                  |                                 |                            |                   |                              |                        |                             |                            |                   |                             | 300000                         |                                     |              | 150                        | 64                    | 49                 | 1522                           | 62350                          | 63872                            | 1735                           | 5000                             | 37982                     |                           | 21277                       |             |      |
| Covington                     | 481                            | 283627                          | 283627                        | 126520                     |                               | 6500                           | 35627                    |                               | 4800                             |                           |                             | 1576                             | 34242                           | 29727                      | 3400              | 232378                       | 401680                 | 41230                       | 1                          |                   |                             | 500000                         | 85674                               |              | 13                         |                       |                    |                                |                                |                                  |                                |                                  |                           |                           |                             |             |      |
| Cynthiana                     |                                | 401680                          | 402161                        | 130000                     |                               | 2625                           | 12500                    |                               |                                  |                           |                             |                                  |                                 |                            |                   |                              |                        |                             |                            |                   |                             |                                |                                     |              |                            |                       |                    |                                |                                |                                  |                                |                                  |                           |                           |                             |             |      |
| Clay City                     |                                |                                 |                               |                            |                               |                                |                          |                               |                                  |                           |                             |                                  |                                 |                            |                   |                              |                        |                             |                            |                   |                             |                                |                                     |              |                            |                       |                    |                                |                                |                                  |                                |                                  |                           |                           |                             |             |      |
| Carrollton                    |                                |                                 |                               |                            |                               |                                |                          |                               |                                  |                           |                             |                                  |                                 |                            |                   |                              |                        |                             |                            |                   |                             |                                |                                     |              |                            |                       |                    |                                |                                |                                  |                                |                                  |                           |                           |                             |             |      |
| Cattlettsburg                 |                                |                                 |                               |                            |                               |                                |                          |                               |                                  |                           |                             |                                  |                                 |                            |                   |                              |                        |                             |                            |                   |                             |                                |                                     |              |                            |                       |                    |                                |                                |                                  |                                |                                  |                           |                           |                             |             |      |
| Dalesburg                     |                                | 43802                           | 43802                         | 17103                      | 350                           | 1400                           | 15012                    | 3574                          | 1075                             |                           |                             |                                  |                                 | 1993                       |                   | 4000                         | 44508                  |                             |                            |                   |                             | 150000                         | 706                                 |              | 60                         | 39                    | 52                 | 2761                           | 2761                           | 2761                             |                                |                                  |                           | 2761                      |                             | 2761        |      |
| Fairview                      |                                |                                 |                               |                            |                               |                                |                          |                               |                                  |                           |                             |                                  |                                 |                            |                   |                              |                        |                             |                            |                   |                             | 50000                          |                                     |              | 14                         |                       |                    |                                |                                |                                  |                                |                                  |                           |                           |                             |             |      |
| Falmouth                      |                                |                                 |                               |                            |                               |                                |                          |                               |                                  |                           |                             |                                  |                                 |                            |                   |                              |                        |                             |                            |                   |                             |                                |                                     |              | 23                         |                       |                    |                                |                                |                                  |                                |                                  |                           |                           |                             |             |      |
| Grahn                         |                                |                                 |                               |                            |                               |                                |                          |                               |                                  |                           |                             |                                  |                                 |                            |                   |                              |                        |                             |                            |                   |                             |                                |                                     |              | 17                         |                       |                    |                                |                                |                                  |                                |                                  |                           |                           |                             |             |      |
| Hitchens                      |                                | 109601                          | 109601                        | 56000                      |                               | 1527                           | 23919                    |                               | 1000                             |                           |                             |                                  |                                 | 4122                       | 16293             | 6700                         | 101101                 | 8500                        | 1                          | 1                 |                             | 400000                         | 82300                               |              | 65                         | 71                    | 46                 | 290                            | 5540                           | 5830                             |                                | 452                              |                           | 490                       | 4888                        |             |      |
| Hopewell                      |                                |                                 |                               |                            |                               |                                |                          |                               |                                  |                           |                             |                                  |                                 |                            |                   |                              |                        |                             |                            |                   |                             | 150000                         |                                     |              | 6                          |                       |                    |                                |                                |                                  |                                |                                  |                           |                           |                             |             |      |
| Inez                          |                                | 47559                           | 57559                         | 30000                      | 650                           | 3140                           | 23050                    |                               |                                  | 500                       |                             |                                  |                                 | 719                        |                   |                              | 57950                  |                             | 1                          |                   |                             | 200000                         |                                     |              | 76                         | 47                    | 52                 |                                | 6500                           |                                  | 2500                           |                                  |                           |                           | 4000                        |             |      |
| Kingswood                     |                                | 44431                           |                               |                            |                               |                                |                          |                               |                                  |                           |                             |                                  |                                 |                            |                   |                              |                        |                             |                            |                   |                             |                                |                                     |              | 200                        | 148                   | 49                 | 1182                           | 17339                          | 18521                            |                                |                                  |                           |                           | 1788                        | 11939       |      |
| King's Chapel                 |                                | 28062                           | 28062                         | 5158                       | 325                           | 2170                           | 6942                     | 1300                          | 500                              |                           |                             | 200                              | 6709                            | 2925                       |                   | 28062                        |                        | 1                           |                            |                   | 145000                      | 1750                           |                                     | 43           | 26                         | 12                    |                    | 450                            | 455                            |                                  | 4026                           | 815                              |                           | 125                       |                             |             |      |
| Liberty                       | 30565                          | 29235                           | 59800                         | 8939                       | 750                           | 3000                           | 8950                     | 3465                          |                                  | 500                       | 1533                        | 700                              | 700                             | 4582                       | 20000             | 2158                         | 53245                  | 6555                        | 1                          |                   |                             | 120000                         |                                     |              | 12                         | 10                    | 38                 | 1199                           | 1276                           | 2475                             |                                |                                  | 330                       | 1214                      | 1261                        |             |      |
| Latonia                       |                                |                                 |                               |                            |                               |                                |                          |                               |                                  |                           |                             |                                  |                                 |                            |                   |                              |                        |                             |                            |                   |                             | 170000                         |                                     |              | 70                         | 65                    | 44                 |                                |                                |                                  |                                |                                  |                           |                           |                             |             |      |
| Maysville                     | 240                            | 145562                          | 145802                        | 84904                      |                               | 4518                           | 29090                    | 2650                          | 4525                             | 1300                      | 2939                        | 550                              |                                 | 10061                      |                   | 4175                         | 145802                 |                             | 1                          |                   |                             | 150000                         |                                     |              | 60                         | 54                    | 47                 | 2084                           | 7820                           | 9904                             | 2179                           |                                  | 3600                      | 1242                      | 3140                        |             |      |
| Normal                        |                                | 174799                          | 174799                        | 102344                     | 525                           | 2602                           | 18000                    | 2100                          | 22117                            | 4500                      |                             |                                  |                                 |                            | 44811             | 16450                        | 168416                 | 6383                        | 1                          |                   | 2 lots                      | 600000                         | 130000                              |              | 85                         | 70                    | 48                 | 1884                           |                                | 11301                            | 2171                           | 1249                             | 600                       | 1821                      | 3260                        |             |      |
| Prestonburg                   |                                | 7500                            | 5500                          |                            |                               |                                | 4700                     |                               |                                  |                           |                             |                                  |                                 |                            |                   | 21625                        | 33825                  |                             |                            |                   |                             | 86500                          | 64800                               |              | 13                         |                       |                    |                                |                                |                                  |                                |                                  |                           |                           |                             |             |      |
| Rockdale                      |                                |                                 |                               |                            |                               |                                |                          |                               |                                  |                           |                             |                                  |                                 |                            |                   |                              |                        |                             |                            |                   |                             | 150000                         |                                     |              | 85                         |                       |                    |                                |                                |                                  |                                |                                  |                           |                           |                             |             |      |
| Rush                          |                                | 45437                           | 45437                         | 14609                      | 825                           | 2348                           | 10000                    | 6013                          | 325                              |                           |                             |                                  |                                 | 9134                       |                   | 4300                         | 44381                  | 1056                        | 1                          |                   |                             | 150000                         |                                     |              | 5                          | 70                    | 52                 | 595                            | 7735                           | 8330                             | 1339                           |                                  | 1062                      |                           | 849                         | 5108        |      |
| Sparta                        |                                |                                 |                               |                            |                               |                                |                          |                               |                                  |                           |                             |                                  |                                 |                            |                   |                              |                        |                             |                            |                   |                             | 250000                         | 100000                              |              |                            |                       |                    |                                |                                |                                  |                                |                                  |                           |                           |                             |             |      |
| Soldier                       | 850                            | 135226                          | 136076                        | 64403                      | 650                           | 3368                           | 23029                    | 3350                          | 5584                             | 7165                      |                             | 635                              | 4665                            | 20750                      | 1460              | 135059                       |                        | 1017                        | 1                          |                   |                             | 200000                         |                                     |              | 132                        | 69                    | 50                 |                                | 12656                          | 12656                            |                                | 3795                             | 1600                      | 2836                      | 326                         | 7195        |      |
| Smokey Valley                 |                                |                                 |                               |                            |                               |                                |                          |                               |                                  |                           |                             |                                  |                                 |                            |                   |                              |                        |                             |                            |                   |                             | 100000                         |                                     |              |                            |                       |                    |                                |                                |                                  |                                |                                  |                           |                           |                             |             |      |
| Toler                         |                                |                                 |                               |                            |                               |                                |                          |                               |                                  |                           |                             |                                  |                                 |                            |                   |                              |                        |                             |                            |                   |                             | 150000                         |                                     |              | 45                         | 42                    | 10                 | 3927                           |                                | 3927                             |                                |                                  |                           | 635                       |                             |             |      |
| Trace                         |                                |                                 |                               |                            |                               |                                |                          |                               |                                  |                           |                             |                                  |                                 |                            |                   |                              |                        |                             |                            |                   |                             | 100000                         |                                     |              | 37                         | 37                    | 48                 | 138                            | 3258                           | 3396                             |                                | 738                              | 659                       |                           | 88                          | 3170        |      |
| Turkey Creek                  |                                |                                 |                               |                            |                               |                                |                          |                               |                                  |                           |                             |                                  |                                 |                            |                   |                              |                        |                             |                            |                   |                             | 100000                         |                                     |              | 65                         | 72                    | 36                 | 496                            | 3564                           | 4060                             |                                |                                  |                           | 981                       | 3079                        |             |      |
| Valley View                   | 13760                          | 43358                           | 57118                         | 5994                       | 300                           | 1300                           | 6850                     | 1200                          | 738                              | 659                       |                             |                                  |                                 | 300                        |                   |                              | 56347                  | 771                         | 1                          |                   |                             |                                |                                     |              |                            |                       |                    |                                |                                |                                  |                                |                                  |                           |                           |                             |             |      |
| Willard                       |                                | 3623                            | 3623                          | 3377                       |                               | 276                            |                          |                               |                                  |                           |                             |                                  |                                 |                            |                   |                              |                        |                             |                            |                   |                             | 80000                          |                                     |              | 13                         | 75                    | 60                 | 38                             |                                | 4902                             | 4902                           |                                  | 1170                      | 702                       |                             | 1012        | 2018 |
| Total                         | 16496                          | 1878934                         | 1893419                       | 1877114                    | 5288                          | 37263                          | 318889                   | 25662                         | 53504                            | 29874                     | 4472                        | 1250                             | 3711                            | 101607                     | 1192180           | 64269                        | 2428761                | 65958                       | 27                         | 2                 | 2 lots                      | 5131500                        | 493450                              |              | 1401                       | 1050                  | 759                | 13084                          | 152951                         | 185799                           | 3839                           | 14993                            | 17850                     | 65363                     | 12256                       | 91154       |      |

Annual Report of the Kentucky District, Pilgrim Holiness Church.

J. Thos. Johnson, District Superintendent.

|                          |                    |
|--------------------------|--------------------|
| Williams, Mrs. L. A..... | Normal, Ky.        |
| Wisner, J. A.....        | Kingswood, Ky.     |
| Wetsee, Delmas.....      | Huntington, W. Va. |
| Yarbrough, Beeson.....   | Kingswood, Ky.     |
| Musser, Denver.....      | Ashland, Ky.       |

#### ORDAINED DEACONESSES

|                            |                |
|----------------------------|----------------|
| Johnson, Mrs. J. Thos..... | Kingswood, Ky. |
| Beirnes, Mrs. Geo.....     | Kingswood, Ky. |

#### LICENSED DEACONESSES

|                        |                |
|------------------------|----------------|
| Barber, Ida.....       | Ashland, Ky.   |
| Brown, Rachel.....     | Kingswood, Ky. |
| Crance, Virgie.....    | Ashland, Ky.   |
| Runyon, Mrs. J. B..... | Toler, Ky.     |
| Renfro, Sallie.....    | Ashland, Ky.   |
| Varner, Mrs. W. D..... | Toler, Ky.     |
| Wolfe, Gladys.....     | Ashland, Ky.   |

#### MISSIONARIES

|                       |                |
|-----------------------|----------------|
| Beirnes, Wm.....      | Kingswood, Ky. |
| Forshee, Claudie..... | Kingswood, Ky. |

Williams, Plennie.....304 Wood St., Maysville, Ky.  
 Williams, L. A.....Normal, Ky.  
 Waddell, B. H.....1323 Garard St., Covington, Ky.  
 Waters, P. W.....1723 Holman St., Covington, Ky.  
 Barnes, O. H.....Kingswood, Ky.

#### LICENSED MINISTERS

Armstrong, Chester.....Grahns, Ky.  
 Black, J. O.....134 Newman St., Ashland, Ky.  
 Bradford, L. M.....Hopewell, Ky.  
 Bolander, Mrs. H. H.....Normal, Ky.  
 Brown, H. N.....Williamstown, Ky., R. R. No. 4  
 Baynum, Sallie.....846 Banklick St., Covington, Ky.  
 Buffington, Frank.....1931 Race St., Covington, Ky.  
 Bishop, Thomas.....1553 Cordelia St., Covington, Ky.  
 Bennett, Howard S.....Fort Gay, W. Va., Box 125  
 Dawn, Mrs. J. W.....California, Ky.  
 Duggins, C. W.....Kingswood, Ky.  
 Duncan, O. H. P.....314 Greenup St., Covington, Ky.  
 Everetts, Stells.....Kingswood, Ky.  
 Fogel, Wm.....Alexandria, Ky., R. R. No. 1  
 Gibhart, R.....1618 Georgia Ave., Connersville, Ind.  
 Hamilton, J. D.....Normal, Ky.  
 Holbrook, O. C.....Gregoryville, Ky.  
 Harmon, Delia.....464 N. Broadway, Lexington, Ky.  
 Hanna, Mrs. Elmer.....Kingswood, Ky.  
 Isam, Ira R.....Grahns, Ky.  
 Jessee, J. W.....Smoky Valley, Ky.  
 Kelley, Harve.....Ashland, Ky.  
 Kingbaum, Bertha.....Kingswood, Ky.  
 Koon, Mary.....Kingswood, Ky.  
 Lee, J. E.....Kingswood, Ky.  
 Loomis, J. R.....413 Western Ave., Covington, Ky.  
 Lacky, Victory.....Posey, Ky.  
 Lowe, Bennie.....Maysville, Ky.  
 McDavid, G. H.....Ashland, Ky.  
 Mitchell, S. E.....Maysville, Ky.  
 Martin, W. T.....Carrollton, Ky.  
 McAdams, D. D.....Kingswood, Ky.  
 Posey, Curtis.....Ashland, Ky.  
 Qualls, Andrew.....Unity, Ky.  
 Perry, E. A.....Kermit, W. Va.  
 Roberts, E. R.....Tuscola, Ky.  
 Simpson, Mrs. Gussie.....Soldier, Ky.  
 Thompson, Grace.....Kingswood, Ky.  
 Smith, R. L.....Richmond, Ky., R. R. No. 4  
 Williams, Mrs. Plennie.....Maysville, Ky.



# Ministerial Directory

## ORDAINED MINISTERS

|                      |  |
|----------------------|--|
| Alley, G. W.         | Inez, Ky.  |
| Beirnes, Geo.        | Kingswood, Ky.                                   |
| Bevington, G. C.     | Kingswood, Ky.                                   |
| Bowlong, Leonard     | Willard, Ky.                                     |
| Baynum, J. C.        | Rock Camp, W. Va.                                |
| Brown, C. C.         | Kingswood, Ky.                                   |
| Brown, Mrs. C. C.    | Kingswood, Ky.                                   |
| Bolander, H. H.      | Normal, Ky.                                      |
| Carrol, J. F.        | Inez, Ky.  |
| Duncan, Wm.          | Rush, Ky.  |
| Dickerson, H. N.     | 338 Newman St., Ashland, Ky.                     |
| Dulaney, Earl        | Ashland, Ky.                                     |
| Defoe, Charles       | Huntington, W. Va.                               |
| Fugett, C. B.        | 250 Hackworth St., Ashland, Ky.                  |
| Fugett, Mrs. C. B.   | 250 Hackworth St., Ashland, Ky.                  |
| Finch, R. G.         | Kingswood, Ky.                                   |
| Fry, J. E.           | Maysville, Ky.                                   |
| Hill, Mrs. I. B.     | Kingswood, Ky.                                   |
| Howell, Floyd        | Crittenden, Ky.                                  |
| Johnson, J. Thos.    | Kingswood, Ky.                                   |
| Keller, Orvan        | Kingswood, Ky.                                   |
| Lucas, B. H.         | Willard, Ky.                                     |
| Maddox, S. R.        | Dalesburg, Ky., R. R. No. 4                      |
| Morgan, O. A.        | Ashland, Ky., R. R. No. 2                        |
| Mourer, C. C.        | 301 Seitz Ave., Cincinnati, O.                   |
| McCune, O. F.        | Kingswood, Ky.                                   |
| McNurlin, John       | Ashland, Ky.                                     |
| Owney, E. C.         | Rush, Ky.  |
| Hanna, Elmer         | Kingswood, Ky.                                   |
| Perry, A. M.         | 110 Ivanhoe Ave., Cincinnati, O.                 |
| Phillips, Ovada      | Inez, Ky.  |
| Qualls, E. P.        | Maysville, Ky.                                   |
| Snapp, H. C.         | Barbersville, Ky.                                |
| Slater, C. L.        | Kingswood, Ky.                                   |
| Slater, Mrs. C. L.   | Kingswood, Ky.                                   |
| Smith, J. A.         | Kingswood, Ky.                                   |
| Simpson, Raymond     | Soldier, Ky.                                     |
| Taylor, C. G.        | Kingswood, Ky.                                   |
| Wade, L. R.          | 1618 Georgia Ave., Connersville, Ind.            |
| Wellman, G. L.       | Kingswood, Ky.                                   |
| Wilcox, Wm.          | Rosedale, Ky.                                    |
| Wireman, C. L.       | Covington, Ky., 4704 Victory Ave., Latonia, Sta. |
| Wininger, Frank      |  |
| Wininger, Mrs. Frank |  |

influence to the ends of the earth. It is not our purpose to make preachers and missionaries of all students, unless they are divinely called, but to help young men and women to an equipment that will enable them to fill successfully the different vocations of life, to attain breadths and depths of character, to indicate reverence for God and all things sacred, to promote vital Godliness and inspire faith in and respect for the Holy Scriptures. We seek to lead all our students into a saving knowledge of Christ and to establish them in the doctrine and experience of holiness. We seek for Kingswood Holiness College to be known to all men everywhere as an institution that is steadfastly set for the defense of the faith once delivered unto the saints. It stands for the whole Bible and for the great doctrine of entire sanctification as taught within its sacred pages and by the founders and fathers of our Holy Christianity.

#### BUILDINGS

Six buildings constitute the college group: administration building containing a large chapel, president's office, museum and class rooms; a grammar school building for the grades work; two dormitories situated on opposites of the campus, one for boys and one for girls. The young ladie's dormitory contains the music studio and a large dining hall; near these buildings is the president's home where he can give his personal care and attention to all the students. All of these buildings are practically new, well built and substantial, lathed, plastered and papered, and the students will thus be lodged in a cozy home-like place where it will be easy to make rapid mental and spiritual progress. They are situated upon a beautiful hill-top with walks, drive ways, shade trees, parkway and recreation ground which form a nice campus with natural drainage in every direction.

Two other buildings are in course of construction. One nearly completed, is to be used for a Library and a Music Hall. The other, just begun, will contain a central heating plant, lighting plant, Laundry, Dining Hall and Kitchen.

7. The Bible is taught in every grade and course of study.
8. Spiritual in tone; missionary in spirit; economic in thrift; orthodox, non-sectarian, denominational.
9. A school that stands for the best in all lines.

#### RESOURCES

The natural resources of Kingswood and surrounding country include numerous springs of mineral and fresh water, productive soil, a great variety of forest trees, exhaustless formations of sand-stone and lime-stone, broad fields and fruit bearing lands. Within the town limits are numerous building lots, ranging from fifty-four frontage to one or more acres, and adjacent to the town are a number of farms from twenty to several hundred acres, which can be purchased now at a very low price. With little improvement, no better fruit, vegetable, grain and grass land is to be found in this part of the country. On account of the numerous springs, streams, trees and grass range, it affords a fine location for stock and dairy farming.

Since the School has been taken over by the Pilgrim Holiness Church, several of our people have already bought homes, and others are writing about it and considering locating here. Therefore we urge all who desire to locate near a good Holiness School, to come as soon as possible while land and locations are cheap, for prices are rapidly advancing. This school is fully endorsed by our leading men and several of them are already buying property near here, expecting this to be one of the centers of our work.

The health of the place is proverbial. We are confident no more healthful location can be found in the middle west than Kingswood.

#### PURPOSE

All true education is man-making, man-saving and character-building. It deals with the affections, aspirations and conscience, as well as reason and intellect. It concerns the faculties of the soul—their number and nature—and those divine laws, by which the soul passes from littleness to largeness; from immaturity to maturity and full development. True education has to do with the problems of right living as well as the faculties of the mind. It teaches the art of so conducting reason, ambition and will as to secure our own growth, physically, mentally and spiritually, and hereby enables us to advance the welfare of others.

It would not be necessary to add Kingswood Holiness College to the long list of schools already in existence, were its aim the education of the head alone. Our desire is to provide opportunities that will develop all that is best in man; to develop harmoniously all his faculties of mind and soul; to establish a center of spiritual power and holy culture that will flow forth as a mighty stream of

About this college has grown up a beautiful little town which accords an ideal home for parents who wish to educate their children under the best possible advantages. It is not polluted with those evils which surround so many of our schools. There is no vulgarity, neither are there many social evils; and but little worldliness is known within our borders.

Kingswood affords a pleasant home for evangelists, Christian workers, and all others who wish a quiet place, where they can enjoy a delightful rest at home, drink from nature's many mineral springs and leave their families in safety. Just the place to invite your friends to visit and live.

#### DIRECTIONS FOR REACHING KINGSWOOD

When coming from North and East buy ticket to Louisville, Ky. From there take train to Harned, Ky. When coming from the South and West buy ticket for Irvington, Ky. Thence take train for Harned. Write the president when you are coming.

#### CLIMATE

The climate of Kingswood is inviting to our students and all who are interested in the school.

The winters are mild, indeed. The long, much dreaded winter season of other states is shortened here by the early spring bringing the song birds and beautiful flowers. One of the student's fondest pastimes of spring is visiting the cliffs and dales and returning with arms laden with wild flowers.

Then the sunny days that would otherwise be very hot are cooled and fanned by the hill-top breeze that is a daily visitor to the little village.

God has favored this locality with pleasant weather the year round.

#### SOME SPECIAL ADVANTAGES

1. Excellent courses of study adapted to the needs of our students.

2. Healthful climate; and beautiful scenery amongst the hills—in God's lovely nature.

3. Competent, Christian teachers who associate with and take a personal interest in each student.

4. A place free from the social vices and other evils of the cities—clean for our young people.

5. A school which stands for a whole Bible; stands for the faith of our Fathers; stands for Scriptural doctrine and practice.

6. A student body, many of whom are preparing for the ministry and for missionary work; association with which is of inestimable worth.

# General Information

## HISTORY

Kingswood College was named from Kingswood School, England, which was organized by Geo. Whitfield and John Wesley, for the culture of the soul as well as the mind.

In the province of God it was the privilege of Rev. J. W. Hughes to organize the first Holiness School at Wilmore, Ky., and there, for fifteen years he studied the problems of heart and head culture.

When his former school relation was severed, he pleaded with God to release him from school work, but he received no light until he decided to continue it; and then he felt the call to this quiet, ideal country location, away from the noise and wickedness of the busy city.

While the school is distinctly and definitely religious, it has until recently been interdenominational, but it has lately passed under the control of the Pilgrim Holiness Church. It will, however, continue to welcome students from all denominations; and all will be made to feel at home.

While the school is owned and controlled by the Pilgrim Holiness Church, yet, the sectarian spirit will be kept out and all those who know God will be welcome as well as those who desire to know Him.

We do not need more sectarianism, but we do need more of the Pentecostal power in the church, pulpit and pew; for this we shall vigorously contend, hoping to send as soul winners at home and in heathen lands, men and women, definitely saved, clearly sanctified and mentally equipped and spiritually established.

We stand first of all for the Gospel—justification by faith and sanctification by faith—and take a definite stand against all sin and worldliness as well as the modern heresies, such as "Tongues," Spiritualism, Russelism, etc.

## LOCATION

The College is about sixty-five miles southwest of Louisville, and about three miles from Harned, a station on the Fordsville branch of the L. H. & St. L. R. R.; on a large tract of land formerly known as Kingswood farm.

The Campus and Camp Meeting grounds occupy a healthful, well watered, and beautiful site. The College buildings occupy a fine, shaded hill-top overlooking the surrounding country. Beautiful vistas stretch out in long distances before the eye.

In front of the College Campus is a charming grove, where the annual Camp Meeting is held. This retired home-like place affords the best opportunities for real student life. Shut off from the evils incident to the city, it is an ideal location for a college. Picturesque cliffs, delightful landscapes, and sunsets of rare beauty contribute to the students' aesthetic culture.

The School of Great Opportunity  
The School of Careful Bible Training  
The School of Moderate Expense  
The School Missionary Activity  
The School of Standard Educational Advantages  
The School of High Morals and deep Spirituality  
The School with a great purpose

---

### BOARD OF TRUSTEES

REV. J. F. WOODS, Huntington, W. Va.  
REV. RALPH G. FINCH, Kingswood, Ky.  
REV. R. W. CHATFIELD, Marion, Ind.  
REV. S. M. STIKELEATHER, Kingswood, Ky.  
REV. C. C. McNALL, Montgomery, Mich.  
REV. GEO. L. WELLMAN, Kingswood, Ky.  
IRA SHELTON, Kingswood, Ky.

### OFFICERS OF THE BOARD OF TRUSTEES

S. M. STIKELEATHER, Secretary  
J. F. WOODS, President  
GEO. L. WELLMAN, Treasurer

### GENERAL SUPERINTENDENT

REV. W. R. COX, Home Supt.  
REV. R. G. FINCH, Foreign Supt.

### GENERAL BOARD OF EDUCATION

REV. LOWELL H. COATS  
REV. WALTER G. HENSCHEN  
REV. C. G. TAYLOR  
REV. W. R. COX  
REV. G. ARNOLD HODGIN  
REV. B. O. SHATTUCK  
REV. A. E. BLANN

Cincinnati also made a very generous proposal to give room, light and heat, in their building. Or to have a joint deed made to the property, under certain conditions, if the Assembly would move headquarters there.

After all propositions were made, the Assembly proceeded to vote on the new location of Headquarters and Publishing interests, which resulted in Frankfort receiving 105 votes and Cincinnati receiving 117 votes, Cincinnati winning by a small majority of 12 votes.

By an unanimous vote of the Assembly, the next General Assembly will be held at Frankfort, Indiana, September 9-16, 1926.

A full minute of the proceedings of the General Assembly will soon be printed, and can be had for a small amount. Address Rev. P. W. Waters, 1723 Holman Street, Covington, Ky., Secy. Ky. Dist.

## KINGSWOOD HOLINESS COLLEGE

LOCATED IN KENTUCKY DISTRICT

### A Foreword

This College has a vision and a specific mission in Religious Education. Our young people must be equipped with the truth in all branches of study and in the right setting.

It stands for more than the formal teaching of religious knowledge that is found in most of our schools and is set to promote spirituality amongst its students and the experiencing of Bible Truth.

It is opposed to the doctrine of evolution that destroys the supernatural in religion and which is taught in some form in most of our public and religious schools; and to the destructive higher criticism that destroys the authority of the Bible and which has captured most of our theological seminaries and colleges. Anything that would dethrone God from His world, Christ from His redemption, the Holy Spirit from His work, and the Gospel from its benefits, has no place in Kingswood Holiness College.

Its training is practical and pursues the course of adapting the knowledge of any subject to the need of the student in life and service.

Its teaching is ever in harmony with God's Word, whether it is religious instruction, Christian doctrine, personal experience, or practical service; whether it is the study of Philosophy, Science, Mathematics, or Education, there must not be any confusing of true faith, nor any teaching that opposes the Holy Bible—God's Word.

This is a place where students may prepare as Christian workers, or Christian men and women in other vocations.

Kingswood Holiness College is steadily following its vision and its mission and God is signally blessing it.

Report of Rev. Elmer Hanna, Superintendent of Bethel Orphanage.

Camp meetings visited 4.

Churches visited 40.

State Assemblies 7.

Cash and pledges for the orphanage \$6525.00.

Donations, clothing, fruit, etc. \$1000.00.

Times preached 15.

Children dedicated 20.

Seekers 20.

Children in the home 58.

We added two rooms, bought 3 acres land and have building planned for girl's dormitory. Also have four workers.

## Excerpts from the Proceedings of the General Assembly Held at Greensboro, N. C., October 7-14, 1924

Assembly convened at two o'clock p. m., Tuesday October 7th, with Gen. Supt. W. R. Cox in Chair, Delegates and Preachers were enrolled, and Assembly set in order for business.

Greensboro Bible and Literary Training School was accepted, as one of the General Church Schools.

Pilgrim Bible College, of Pasadena, Cal., was accepted as one of the General Church Schools.

A Constitution was adopted by which we are to govern a Young People's Society in our Church, called "The Junior Pilgrim Band."

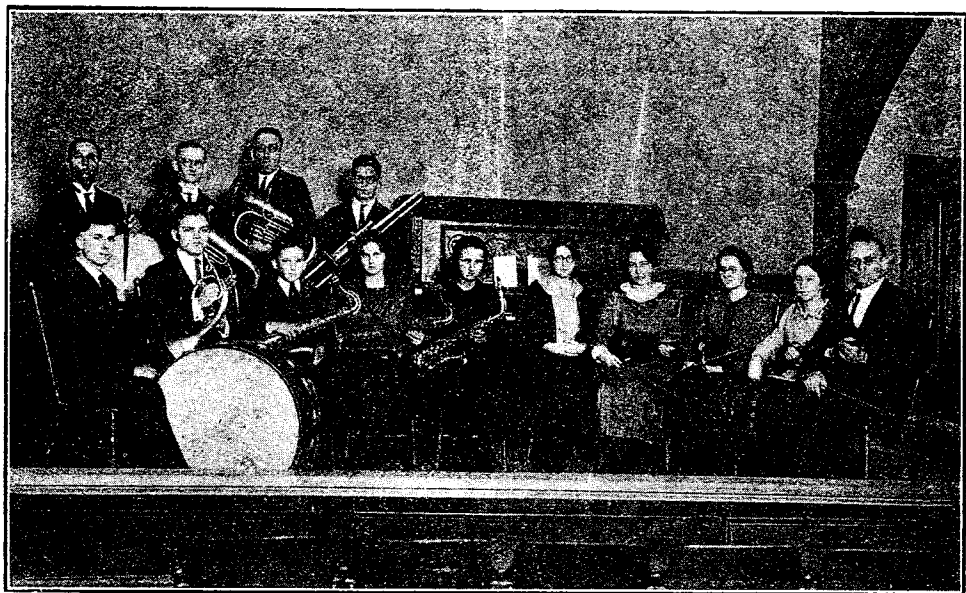
We the District of Kentucky, after consideration and prayer, to insure harmony and co-operation in the church in general, Do hereby move to rescind the action of yesterday relative to the moving of Headquarters, and Publishing interests from Kingswood. Motion Carried.

While Brother Hodgin of California, spoke of Brotherly Love and Courtesy in the Assembly, the FIRE fell, and all contributed liberally. Session conducted by the HOLY GHOST, by shouting, singing, weeping for joy, and marching, led by the General Superintendent and other officers of the Church.

Many differences of long standing were cleared away, by tearful confessions, while men hugged each other, wept, shouted, and praised GOD, and many things we had been trying to do with resolutions were done in short order by the HOLY GHOST and the LORD got HIS resolutions through without being tabled, or rescinded.

Indiana District made a splendid proposal to the Assembly of a building and camp grounds, located in Frankfort, Indiana, if they would move the Headquarters and Publishing interests there.





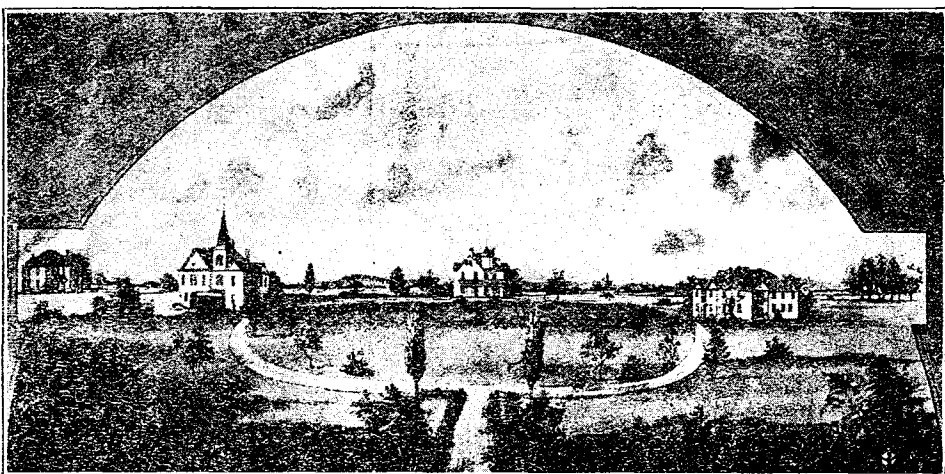
KINGSWOOD HOLINESS COLLEGE ORCHESTRA, FOR A SYMMETRICAL, USEFUL LIFE, THE MUSICAL QUALITIES OF THE YOUNG FOLKS MUST BE WELL DEVELOPED



LIFTING HIGH THE CROSS ANCHORS THE SOUL, KINGSWOOD; A PLACE OF SETTLING YOUNG FOLKS DOWN ON THE SOLID ROCK, OF FAITH IN A WHOLE BIBLE



FRONT VIEW OF THE CHAPEL BUILDING, IN THIS BUILDING SCORES AND HUNDREDS OF BOYS AND GIRLS HAVE PRAYED THROUGH TO BE SAVED OR SANCTIFIED



BIRD'S EYE VIEW OF KINGSWOOD HOLINESS COLLEGE, OUR RECRUITING STATION FOR THE ADVANCEMENT OF THE CAUSE OF HOLINESS; THE PLACE WHERE THE KENTUCKY STATE ASSEMBLY WAS HELD, SEPTEMBER 15-19, 1924