

MINUTES

of the

Twenty-Seventh Annual Assembly

PILGRIM HOLINESS
CHURCH

Kentucky District

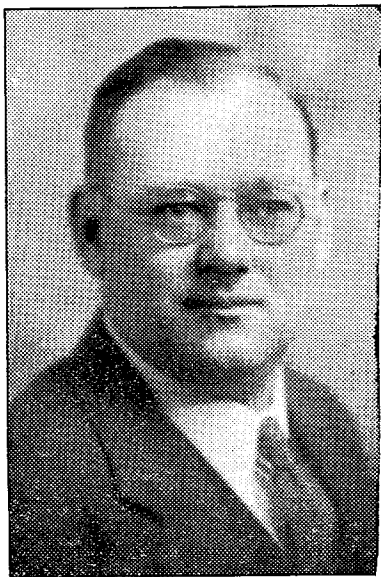


August 31 - September 3, 1936

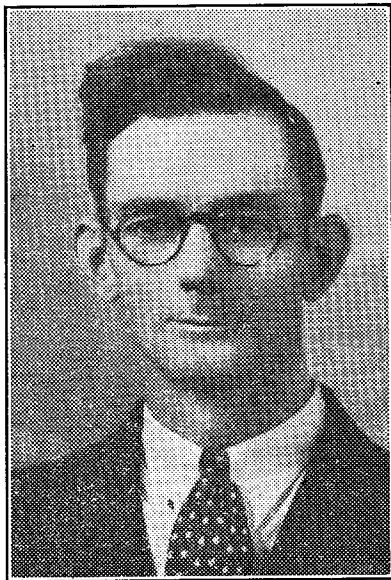
Aspen Grove, Kentucky



REV. W. L. SURBROOK
General Superintendent



REV. E. E. LEADINGHAM
District Superintendent



REV. L. S. HOUSTON
Assistant District Superintendent

MINISTERS AND DEACONESSES ATTENDING THE ASSEMBLY

Mrs. and Thomas Alexander, M. M. Benner, Sallie Baynum, Mrs. and H. H. Bolender, C. G. Bowling, Mrs. and K. A. Brannon, P. O. Carpenter, W. J. Crider, Carrie B. Dryden, B. F. Durham, J. L. Estes, Anna M. Evans, Kenneth Fleming, Mrs. and L. S. Houston, Mrs. Mary Hudson, C. E. Johnson, E. E. Leadingham, S. R. Maddox, F. W. May, Rolland McCord, W. C. Miller, Mrs. Lona Myers, Lloyd Robinson, Donald Ross, Graham F. Senter, Mrs. and C. F. Shields, F. M. Singleton, H. C. Snapp, Lawrence Steele, P. J. Stewart, Jack Tackett, Mrs. Gertie C. Vincent, Robert Weedman, G. L. Wellman, Mrs. Clara Wilburn, Mrs. and F. E. Williams.

LAY DELEGATION

Ashland First, Mrs. May Posey; Ashland Second, Miss Marie Holmes; Aspen Grove, J. F. Newkirk; Barterville, Rodney Turner; Carrollton, Miss Betty Southerland; Central City, Miss Inez Fortner; Cloverport, Miss Hazel Whorley; Covington First, Mrs. W. J. Crider; Covington Second, Raymond Crail; Elizabethtown, Mrs. W. C. Probus; Erlanger, Mrs. Alice Fleek; Falmouth, Mrs. E. E. Leadingham; Garvin Hill, Mrs. Mary Underwood; Hitchens, Fred Crum; Louisville, Miss Dorothy Ratcliff; Maysville, Mrs. M. M. Benner; Morehead, Miss Irene Maxey; Olive Hill, Mrs. Ida Jones; Pinson Fork, Mrs. Tony Marsh; Prestonsburg, Mrs. Dorothea Spradlin; Rush, Charles Blythe; Soldier, Miss Marjorie Bledsoe; Salem, Miss Jewel Hutchinson; Trace, Mrs. Mattie Pope; Tram, Mrs. Herma Davis; Wheelwright, Curtis Cox.

OFFICIAL RECORD

LEADING OFFICERS

Dist. Supt.—Rev. E. E. Leadingham.....537 Pendleton St., Falmouth, Ky.
Assistant Superintendent—Rev. L. S. Houston.....Carrollton, Ky.
District Secretary—Miss Jenny V. VincentSoldier, Ky.
District Treasurer—Rev. M. M. Benner.....1206 Forest Ave., Maysville, Ky.

ADDITIONAL MEMBERS OF THE DISTRICT COUNCIL

Rev. H. H. Bolender.....Elizabethtown, Ky.
Rev. C. F. Shields.....2833 S. 5th St., Louisville, Ky.
Rev. F. E. Williams.....2231 Liberty St., Ashland, Ky.

BOARD OF TRUSTEES

Rev. E. E. Leadingham.....537 Pendleton St., Falmouth, Ky.
Rev. H. H. Bolender.....Elizabethtown, Ky.
Rev. P. O. Carpenter.....R. R. 2, Box 180, Ashland, Ky.

CAMP MEETING COMMITTEE

Rev. Robert Weedman.....Soldier, Ky.
Rev. C. G. Bowling.....4424 Decoursey Ave., Covington, Ky.
Fred Crum.....Hitchens, Ky.

RECEPTION COMMITTEE

Rev. P. J. Stewart.....Hitchens, Ky.
Rev. Frank May.....Bradford, Ky.

EXAMINING BOARD

Rev. P. J. Stewart (one year).....Hitchens, Ky.
Rev. L. S. Houston (two years).....Carrollton, Ky.
Rev. P. O. Carpenter (three years).....R. R. 2, Box 180, Ashland, Ky.

EDUCATIONAL BOARD

Rev. C. G. Bowling (one year).....4424 Decoursey Ave., Covington, Ky.
Rev. C. E. Johnson (two years).....143 Holmes St., Frankfort, Ky.
Rev. B. F. Durham (three years).....Pinson Fork, Ky.

RESOLUTION COMMITTEE

Rev. H. H. Bolender.....Elizabethtown, Ky.
Rev. Lawrence Steele.....Prestonsburg, Ky.
Rev. B. H. Lucas.....Ashland, Ky.
Rev. Jack Tackett.....Olive Hill, Ky.
Rev. F. M. Singleton.....Kingswood, Ky.

WAYS AND MEANS COMMITTEE

Rev. M. M. Benner.....	1206 Forest Ave., Maysville, Ky.
Rev. C. F. Shields.....	2833 S. 5th St., Louisville, Ky.
Rev. F. E. Williams.....	2231 Liberty St., Ashland, Ky.
Rev. Lloyd Robinson.....	4206 Plainville Rd., Cincinnati, O.
Rev. W. J. Crider.....	816 Banklick St., Covington, Ky.

STATISTICAL COMMITTEE

Rev. Graham F. Senter.....	403 E. Shelby St., Falmouth, Ky.
Rev. E. W. McVey.....	Cloverport, Ky.
Mrs. C. E. Johnson.....	143 Holmes St., Frankfort, Ky.

EDITING COMMITTEE

Rev. Graham F. Senter.....	403 E. Shelby St., Falmouth, Ky.
Miss Jenny V. Vincent.....	Soldier, Ky.
Mrs. C. E. Johnson.....	143 Holmes St., Frankfort, Ky.

AUDITING COMMITTEE

Rev. Robert Weedman.....	Soldier, Ky.
Mrs. W. C. Probus.....	Elizabethtown, Ky.
Miss Marie Holmes.....	Ashland, Ky.

PASTORAL APPOINTMENTS

Ashland First—Rev. Floyd E. Williams.....	2231 Liberty St., Ashland, Ky.
Ashland Second—Rev. B. H. Lucas.....	Ashland, Ky.
Ashland Third—To be supplied	
Ashland Fourth—Rev. Wm. Duncan.....	2253 Smith St., Ashland, Ky.
Aspen Grove—Rev. K. A. Brannon.....	1810 Young St., Cincinnati, O.
Barterville—Rev. H. C. Snapp.....	Barterville, Ky.
Carrollton—Rev. L. S. Houston.....	Carrollton, Ky.
Central City—Rev. D. D. Fortner.....	601 N. 3rd St., Central City, Ky.
Cloverport—Rev. E. W. McVey.....	Cloverport, Ky.
Covington First—Rev. W. J. Crider.....	816 Banklick St., Covington, Ky.
Covington Second—Rev. C. G. Bowling..	4424 Decoursey Ave., Covington, Ky.
Elizabethtown—Rev. H. H. Bolender.....	Elizabethtown, Ky.
Erlanger—Rev. Lloyd Robinson.....	4206 Plainville Rd., Cincinnati, O.
Falmouth—Rev. Graham F. Senter.....	403 E. Shelby St., Falmouth, Ky.
Frankfort—Rev. C. E. Johnson.....	143 Holmes St., Frankfort, Ky.
Garvin Hill—Rev. Russel Patton.....	Olive Hill, Ky.
Glancy Fork—Rev. M. F. Leadingham.....	Rush, Ky.
Hitchens—Rev. Kenneth Fleming.....	Hitchens, Ky.
Kingswood—Rev. Floyd Singleton.....	Kingswood, Ky.
Liberty—Rev. Raymond Shelton.....	1810 Young St., Cincinnati, O.
Louisville—Rev. C. F. Shields.....	2833 S. 5th St., Louisville, Ky.
Maysville—Rev. M. M. Benner.....	1206 Forest Ave., Maysville, Ky.
Morehead—Rev. J. L. Estes.....	Soldier, Ky.
Olive Hill—Rev. Jack Tackett.....	Olive Hill, Ky.
Pinson Fork—Rev. B. F. Durham.....	Pinson Fork, Ky.
Prestonsburg—Rev. Lawrence Steele.....	Prestonsburg, Ky.
Rockdale—Rev. C. E. Johnson.....	143 Holmes St., Frankfort, Ky.
Rush—Rev. Thomas Alexander.....	Rush, Ky.
Salem—Rev. F. W. May.....	Bradford, Ky.
Soldier—Rev. Robert Weedman.....	Soldier, Ky.
South Portsmouth—Mrs. Esther Coffey.....	South Portsmouth, Ky.
Stinson—To be supplied	
Toler—To be supplied	
Trace—Rev. Thomas Alexander.....	Rush, Ky.
Tram—Miss Elsie Ackerman.....	Tram, Ky.
Wheelwright—Rev. Claude Sexton.....	Wheelwright, Ky.
Willard—To be supplied	

Missions

Burris Chapel—Rev. Marvin Foreman.....	Maysville, Ky.
Cottageville—Rev. M. M. Benner.....	1206 Forest Ave., Maysville, Ky.
Dalesburg—Rev. M. M. Benner.....	1206 Forest Ave., Maysville, Ky.
Ludlow—Rev. Samuel Carson.....	Ludlow, Ky.
Paintsville—Rev. G. W. Rose.....	Prestonsburg, Ky.
Pikeville—To be supplied	

REPORT OF THE DISTRICT SUPERINTENDENT

To the Twenty-seventh Annual Assembly of the Kentucky District of the Pilgrim Holiness Church:

Greetings in the name of Him Who first loved us!

Another year has come and gone and, truly, we are reminded that our life is as a passing cloud—the morning dew, and the shadow on the wall. We have not escaped without battles this year. However, in many respects it has been the best year of my ministry. It has been a real pleasure to work with our untiring, sacrificing, co-operating, and loyal pastors and workers. A most beautiful spirit of fellowship and harmony prevailed throughout the entire year.

The Lord has been pleased to give many of the churches some gracious revivals. The Second Church at Covington and the Church at Carrollton have been paid out of debt. The Louisville Church has purchased a very valuable piece of property on a corner lot in a splendid location, with a two-story building, furnishing a nice room in which to worship, together with a five-room parsonage and a full-size basement for Sunday School classes. The First Church at Ashland has purchased a splendid parsonage. Two new church buildings have been erected, one at Tram, the other at Burris Chapel. While they are not entirely finished, they are so we can use them. The total indebtedness on each church is less than twenty dollars (\$20.00). Falmouth Church has recently been painted. Some of the other churches have been repaired.

We have had three tents in the Home Missionary Field the entire summer. The Lord has honored the efforts. We have organized churches at the following places: Bradford, with a membership of fifteen; Morehead, with a membership of fifteen; Frankfort, with a membership of twenty-three.

I have conducted 92 business meetings; 1 Ministerial Convention; 13 quarterly group meetings; 4 revival meetings; and assisted in many others. I have preached 150 times; traveled 1,870 miles; received for support \$1,200—for traveling expenses, \$300. I have advocated spirituality, Bible standards, church loyalty, and pushed every department of the Church: General and District Budget, Home and Foreign Missions, revivals, camp meetings, and our official paper, the Advocate.

Humbly submitted,

E. E. LEADINGHAM.

MEMOIRS

"I am the resurrection, and the life: he that believeth in me, though he were dead, yet shall he live: and whosoever liveth and believeth in me shall never die."—John 11:25, 26.

We, the Assembly of the Kentucky District, convened at Aspen Grove Aug. 31 to September 3, 1936, place these memoirs in our minutes in loving remembrance of our brothers and sisters who have finished their work and have gone to their Heavenly Home.

Rev. John Gross died Wednesday night of February 20, 1936. He was a member of our First Church at Ashland. In his last board meeting he said, "I am willing to sacrifice two months of my wages, if this church goes forward for God." His last words were spoken to his nurse, "Are you saved? I am saved and sanctified."

Mrs. Carrie Clark died on June 19, 1936. She was a charter member of the First Church at Ashland. As a faithful member and licensed Deaconess, she remained so, until God called her home.

Sister Crosswait passed on to her reward on July 19, 1936. She was a licensed Deaconess and was a member of the First Church at Covington. Those who knew her, loved her as a sincere Christian who carried a burden for the lost and as one who was untiring as an altar worker.

Sister Mary Owsley was a charter member of the Second Church at Ashland. She was a good member for whom much love was expressed.

Brother Edward Collins was a member of the Second Church at Ashland. He was loved as a faithful member until death took him on July 8, 1936.

"We brought nothing into this world, and it is certain we can carry nothing out." "The Lord gave and the Lord hath taken away; blessed be the name of the Lord."—I Tim. 6:7; Job 1:21.

GENERAL PROCEEDINGS

First Sitting of Kentucky District Assembly at Aspen Grove, Ky.

August 31, 1936

The Twenty-seventh Annual Assembly of the Kentucky District of the Pilgrim Holiness Church convened at 10:00 A.M., with the District Superintendent, Rev. E. E. Leadingham, in the chair. It opened by singing "At the Cross," followed by a good season of prayer around the altar, led by Brothers P. O. Carpenter and L. S. Houston.

The song, "In the Garden of My Heart," was sung by Sisters Larkin and McKinney of Covington.

Rev. O. L. King, returned missionary, read the Scripture Lesson from Acts 1:4-8.

The minutes of the last Assembly were reviewed briefly and passed upon.

Roll call of ministers and deaconesses was made.

It was moved and carried that the first six seats across the tabernacle constitute the conference bar.

Brothers W. J. Crider from the Virginia District, and C. G. Bowling from the Tennessee-Alabama District, were received to this district. Brother Graham F. Senter was also accepted into this district.

Brothers D. Ziets and H. Martin of Indiana, Sister Ola Weedman, Sister B. VanVranken from India, Brother G. L. Wellman, Brother and Sister Bayless from Portsmouth, O., and Sister W. J. Crider were welcomed into the Assembly, and on motion, were invited into the conference bar and given the privilege of the floor.

The Chairman called for the registration of delegates.

It was moved and seconded that the Chair appoint all vacancies on the committees.

The Chairman appointed Brother C. G. Bowling to take the place of Brother R. D. Perry on the Educational Board.

Mrs. C. E. Johnson was appointed on the Statistical Committee.

A motion was made that the Assembly be held each morning. Carried.

By common consent it was decided that the Foreign Missionary Service be held Thursday afternoon.

The Home Missionary Service for Tuesday afternoon was voted upon and carried.

Brother J. L. Estes and some members from the new church at Morehead were welcomed into the Assembly.

On motion it is decided that sessions be opened at 8:30 in the morning and adjourn at 12:00.

It was moved and carried that reports be called from the end of the list instead of the beginning.

Motion made and carried that the printing of the minutes be delegated to the District Council.

Reports of Wheelwright Church were read and accepted.

It was moved and carried to extend the time of adjournment until 12:30.

Reports from Tram were heard and accepted.

The Zeits Sisters from Indiana were introduced and sang a special number.

The Chairman read the following Committees:

Ways and Means: M. M. Benner, Lloyd Robinson, C. F. Shields, W. J. Crider, F. E. Williams.

Resolution: H. H. Bolender, Jack Tackett, B. H. Lucas, L. Steele, F. M. Singleton.

By common consent Brother L. S. Houston is released from the Ways and Means Committee.

Brother P. J. Stewart was appointed to act temporarily on the Examining Board.

Motion carried to have the election of officers on Wednesday morning; also, to have the reading of pastoral appointments at 7:00 P.M. Thursday.

Motion prevailed to have breakfast at 7:00 o'clock; also that the ministers and delegates be seated at the first table.

Motion to adjourn was carried.

Benediction by Brother F. E. Williams.

Motion made and carried at the afternoon service that we have breakfast at 9:00 A.M. and supper at 4:00 P.M.

The District Superintendent requested that the Tuesday morning session begin at 7 o'clock.

Second Sitting—Sept. 1, 1936

The session opened by singing "Rock of Ages." Brother Jack Tackett led in prayer. Our General Superintendent then read and commented on Rom. 12: 1-11. The roll was called. The minutes of the former session were read and approved.

Motion made that we rescind the former action and the time of the sessions be from 7:30 to 9:00 A.M. Carried.

It is further moved that we reconvene at 10:30 and continue till 1:00 P.M. Carried.

The District Superintendent presented the following new churches to the district: Salem, with fifteen members; Morehead, with fifteen members; Frankfort, with twenty-three members. On motion these were all gladly accepted into the District.

A letter was read from Brother Lucas, who has been in Home Missionary work in Pikeville, where there is a prospect of a good work. He was unable to attend the Assembly because of illness. Moved and carried that a letter of encouragement be written to him assuring him of our prayers.

Moved to recess till 10:30. Dismissed by Brother O. L. King.

The session reconvened at 10:30 with singing, "He Is So Precious to Me." Prayer was led by Brother H. H. Bolender. The following visitors were then presented: Brother and Sister Walker of the Ohio District, Brothers Marsh, Murphy, Messer-Smith and Kelly from God's Bible School. These were welcomed and seated within the conference bar.

The matter of incorporating our District was then brought before the Assembly by the District Superintendent and the Articles of Incorporation were read. It was moved that we incorporate as a District and that we adopt these Articles of Incorporation subject to perfection by the District Council. Carried.

The Resolutions Committee then reported a recommendation that Resolutions 10 and 14 in the 1935 Minutes be revised. Moved and carried that the recommendation be accepted.

The Auditing Committee was appointed by the District Superintendent: Robert Weedman, Mrs. W. C. Probus and Miss Marie Holmes.

Motion carried that resolution No. 16 be revoked.

The Committee on Condolence was appointed as follows: Mrs. Anna M. Evans, Mrs. E. E. Williams, Mrs. C. F. Shields, J. L. Estes and W. C. Miller.

The resolution concerning Zone Camp Meetings was referred to the committee for redrafting.

Resolutions Nos. 18, 19 and 20 were presented and adopted.

Moved and carried that the names of pastors be called and each report the total number of subscriptions taken for the Advocate in the last three months. Total subscriptions and renewals reported were 183. The highest number (30) was secured by Brother Lloyd Robinson. The second highest (25) by Brother P. O. Carpenter. They received New Testaments as rewards from the District Superintendent.

Graphs of the Foreign Missionary and General Budget Income were shown by the General Superintendent.

The Ways and Means Committee recommend that in Recommendation No. 4 of 1935 the clause "each church pay one dollar per month for Home Missionary work" be omitted. Carried.

It is moved that the action of yesterday be rescinded and that we have the election of officers this afternoon, at 2:00, followed by the Home Missionary service. Carried.

The Auditing Committee submitted the following report: "We, the Auditing Committee, have carefully examined the District Treasurer's books, and find them in excellent condition. We hereby wish to recommend them to this Assembly to be accepted." Signed, Robert Weedman, Marie Holmes, Lillie Probus.

Motion to adjourn was carried. Benediction by Brother Walker.

Third Sitting—Sept. 2, 1936

The session opened at 2:00 P.M. by singing "Blessed Assurance." Brother Marsh spoke for a few minutes from the Scripture, "If the Son therefore shall make you free, ye shall be free indeed."

The roll was called and the ministers responded by pledging the number of subscriptions to the Advocate that they would try to secure during the year. 357 were pledged.

The minutes of the former sitting were read and approved.

The District Superintendent's report was read and accepted.

The District Treasurer's report was read and accepted.

The order of the day being the election of officers, the following tellers were appointed by the District Superintendent: Brothers Marsh, Walker, Houston, Shields and Benner.

Rev. E. E. Leadingham was elected District Superintendent on the first ballot, receiving fifty-seven, out of fifty-eight votes.

Motion carried that he be granted two weeks vacation with pay.

There was no election of Asst. Superintendent on the first ballot. Motion made and carried that we vote on the two receiving the highest number of votes. The result of this ballot was the election of Brother L. S. Houston as the Asst. Superintendent.

Moved and carried that we suspend the Rules of the Manual and re-elect the District Secretary by acclamation. This was carried.

The District Treasurer, Rev. M. M. Benner, was also elected by acclamation.

Brothers H. H. Bolender, C. F. Shields and F. E. Williams were elected as additional members on the Council.

Moved and carried that we elect Brother P. O. Carpenter by acclamation to the Examining Board for three years and Brother Paul Stewart for one year.

By Acclamation Brother B. F. Durham was elected on the Educational Board for three years and Brother C. G. Bowling for one year.

Moved and carried that we re-elect Brother E. E. Leadingham and Brother H. H. Bolender to the Board of Trustees. Brother Carpenter was also elected on this Board.

Motion carried that the District Superintendent appoint the following committees: Ways and Means, Resolutions, Statistical and Camp Meeting.

The Editing Committee was appointed as follows: Graham F. Senter, Mrs. C. E. Johnson and Jenny V. Vincent.

Moved and carried that we have the Home Missionary service tomorrow, Wednesday, at 2:00 P.M.

Brother Lawrence Steele responded to a request to sing "The Old Coat and the New." The blessings of the Lord were outpoured.

Dismissed by Brother Leadingham.

Fourth Sitting—Sept. 2, 1936

Session was opened by singing, and Brother W. J. Crider led in prayer. Brother Surbrook read from 2 Thes. 2:1-10, and brought a stirring message on "The Signs of the Times."

Adjourned for breakfast. Benediction by Brother Surbrook.

At 10:30 A.M. the session reconvened singing "When I See the Blood." Prayer was led by Brother G. L. Wellman. Brother Bolender read 1 Thess. 4.

The minutes of the previous session were read and approved as corrected.

Brother McNurlin, Brother Murphy and daughters from the Ohio District were introduced and welcomed into the Assembly.

Brother P. O. Carpenter and Brother P. J. Stewart were presented as evangelists in the Kentucky District and the churches were urged to use them in meetings.

The District Superintendent announced the following committees: Ways and Means, Resolutions, Camp Meeting, and Statistical.

Recommendation No. 2 from the Ways and Means Committee was adopted.

Motion made to delete Recommendation No. 2 of 1935 Minutes. Carried.

Pledges for the 1937 Camp Meeting were taken, amounting to \$212.00.

Moved and carried that the Secretary get the names and addresses of those who pledged and give the same to the District Treasurer, who is to notify them quarterly.

The Ways and Means Committee recommend that we revise Recommendation No. 6 of 1935 minutes. Carried.

Recommendations Nos. 12, 13, 14, and 15 were adopted.

Recommended that the percentages in Recommendation No. 7 be changed. Adopted.

Resolution No. 21 was presented by the Committee and adopted.

Invitations were received from Louisville and Ashland for the Ministerial Convention. On ballot Louisville was chosen as the place for the Convention.

Moved and carried that the date and arrangements for the Ministerial meeting be left to the decision of the District Council.

It was moved and carried that the Resolution Committee makes the rules for campers, and that they be included in the minutes.

Moved and carried that we adjourn and that we have the Statistical report at the opening of the next session. Benediction by Brother Leadingham.

Fifth Sitting—Wednesday P.M.

The session opened by singing "Where He Leads Me I Will Follow." Scripture quotations were given, and Brother O. L. King led in prayer.

Minutes were read and approved.

Statistician reports that all reports are in, except those from Ashland Fourth Church.

Moved and carried that the report of the Educational Committee be postponed until they have a complete report.

Home Missionary service was opened by Brother Shields speaking from Matt. 23:19 and giving some of his experiences in opening the work in Louisville. Brother Estes then spoke and told of the opening and carrying on of the new work in Morehead. Brother Brannon told of the work at Frankfort. Brother Surbrook commented favorably on the service and encouraged the District to press on in the good work.

Mrs. K. A. Brannon was recommended for ordination and was accepted by vote of the Assembly.

Motion carried that we have the ordination service tonight at 7:00 P.M.

Moved and carried to adjourn. Brother Carpenter dismissed by prayer.

Sixth Sitting—Sept. 3, 1936

Session convened at 7:30 A.M. Song, "He Is So Precious to Me." Prayer, led by Sister Vincent. Brother F. E. Williams read II Cor. 6:3-11.

Moved and carried that the roll call be dispensed with.

Minutes of the last sitting were read and approved.

Resolution Committee presented Resolution No. 22 which was adopted.

The Resolution Committee read the proposed camp meeting rules and they were adopted.

Moved and carried that the Resolution Committee draft a resolution providing for the enforcement of the Camp Meeting rules.

The Memorials presented by the Condolence Committee were read by the Secretary and approved by the Assembly.

The transfer of Brother Graham F. Senter from the Virginia District was read by the Secretary.

The dates of our Assembly, Camp and Ministerial meeting, as arranged by the District Council, were read and approved.

Moved to adjourn until 10:30. Dismissed by Brother Durham.

Reconvened by singing "Pentecostal Fire Is Falling." Brother C. E. Johnson led in prayer. Brother Thomas, General Secretary of Foreign Missions, read the Scripture lesson found in Acts 20:17-38.

Minutes of the morning session were read and approved.

Mrs. P. W. Thomas and Brother Daniels were introduced and welcomed into the Assembly.

Brother Wellman was excused by vote of the Assembly.

The Ways and Means Committee presented Recommendation No. 17 and 18 which were adopted.

The Resolution Committee presented Resolutions No. 23 and 24 which were adopted. Resolution 25 was also adopted.

The recommendation of the Educational Board was read and adopted.

Moved and carried that the District Council be given power to complete the list of ministers.

Moved and carried that the Educational Board draw sufficient funds from the District Treasurer to cover cost of Questionnaires.

On request, Brother P. W. Thomas sang "When I Take My Vacation in Heaven."

Moved and carried that Brother and Sister Shields sing "It Took a Hold of Me." They complied with this request.

Moved and carried that the District Council employ a cook for the 1937 Camp.

The Statistical report was read and accepted.

Resolution No. 27 was adopted.

Moved and carried that the Camp Meeting Committee appoint some one to carry out this resolution during the remainder of this Camp.

Resolutions were presented and rising votes of thanks given to the following: General Superintendent, General Secretary of Foreign Missions, our Missionaries, District Superintendent, District Secretary, and Treasurer. Camp Meeting Committee, Cook and Helpers, and to Sister Johnson and Brother Senter for their faithful services in typing, etc.

Resolution adopted to send a letter of thanks to Brother and Sister L. S. Clifford of Elizabethtown for their liberal gift to the Camp.

Brother and Sister Belew from Colorado were welcomed into the Assembly.

Moved and carried that the Assembly adjourn and reconvene for the Missionary service at 1:30 P.M. Adjourned by singing "Blest Be the Tie." Benediction by L. S. Houston.

RESOLUTIONS

1. Resolved: that we adhere strictly to Manual in giving credentials, in compliance with Sec. 141-147-149.

2. Resolved: that each pastor read all Resolutions of this Assembly to his congregation at the earliest possible convenience.

3. Resolved: that the District Superintendent make at least three trips over the district during the year.

4. Resolved: that each church supply the Camp with two each of the following: knives, forks, spoons, cups, saucers, plates, glasses and straw ticks.

5. Resolved: that each pastor of our District make a special effort to place a 1934 Manual in the home of each member of our church.

6. Resolved: that no pastor hold revivals off his charge without making satisfactory arrangements with his local church board, and then not more than two revivals during the conference year, provided said church is supporting him.

7. Resolved: that no person be granted license to preach, or renewal of credentials, who does not believe in and practice the Bible doctrine of tithing, and tithe into the Pilgrim Holiness Church.

8. Resolved: that all Resolutions be retained from year to year, unless revoked or revised by special act of the Assembly.

9. Resolved: that the books of the local churches be closed at the end of the month prior to the month in which the Assembly convenes.

10. Resolved: that we as a district set for our goal at least one church in every county in the State.

11. Since it is a matter of importance for the pastors of the District to attend the Assembly and Camp, be it therefore resolved that the pastor's support at the church where he is or has been serving as pastor shall continue over the two Sundays while he is attending said Assembly and Camp, providing he has not moved before Assembly.

12. Resolved: that no church elect a delegate to our District Assembly, who will not agree to stay through the entire Assembly.

13. Resolved: that those pursuing the Study Course send for their home study questions early in the year, forwarding with their request sufficient postage to cover cost of correspondence.

14. Resolved: that the District furnish the Educational Board with a complete set of books of the Preachers' Study Course.

15. Whereas, many of our pastors have not received sufficient financial support, be it resolved, that each local church appoint one prayer meeting night each month as "Donation Night," at which time foodstuffs and provisions shall be brought together for the pastor.

16. Resolved: that our District Superintendent appoint a Statistical Committee for next year.

17. Resolved: that each church send a set of reports corrected and balanced with a duplicate by the pastor, and that copy of said reports be handed to the Statistical Committee not later than the first session of the Assembly.

18. Resolved: that each group of the District have at least three Quarterly Meetings a year.

19. Resolved: that each Zone have a Sunday School Attendance Banner, the same to be given to the Sunday School having the largest percentage of increase and that each chairman shall provide Sunday School Rallies in the various churches.

20. Resolved: that all persons applying for license appear in person to the Examining Board, unless applicant is sick or otherwise unable to appear, and in such cases some member of the Assembly certify as to their character and location.

21. Resolved: that the District Council be vested with full power to construct buildings for the District when necessary, appointing and directing a committee to carry out its plans.

22. Resolved: that no one leave the Assembly without its permission.

23. Resolved: that all who disregard the following rules be answerable to the District Council:

a. All pastors shall instruct their church and young people that all who come to the Camp shall abide by its rules.

b. Everyone shall retire, or be quiet after 10:30 P.M.

c. A dean shall be appointed over each dormitory.

d. No single young people shall be allowed to be off the grounds after 7:00 P.M.

e. No article shall be taken from the dining room or kitchen without permission from the one in charge, and shall be returned in good condition.

f. No food shall be taken from the kitchen without permission.

g. Parents shall supervise the conduct of their children, while on the camp grounds.

h. A supervisor shall be appointed to care for the kitchen and dining room workers; for the parking of cars; caring for the tent, and tabernacle; and for the cleaning of the camp grounds; these to be appointed by the Camp Meeting Committee.

24. Resolved: that the District Council appoint a sheriff to be deputized by the county to patrol the camp grounds.

25. Resolved: that all preachers come, send someone, or pay the equivalent of 3 days labor for the preparation of the District Camp and Assembly, when called upon by the District Superintendent.

26. Resolved: that all preachers give 3 days labor or pay the equivalent, providing a building program is launched, same to work under the supervision of the Building Committee.

27. Resolved: that we register all who come to Camp, assigning work to each one, as equally as possible. A meal ticket will be given all who register, and is to be presented at the dining room door.

28. Resolved: that each Zone have a tent meeting annually and that the pastors of said Zone constitute the board with the District Superintendent as chairman.

29. Resolved: that we give our General Superintendent a rising vote of thanks for his excellent service.

30. Resolved: that we give our General Secretary of Foreign Missions a rising vote of thanks for his presence and assistance in the Assembly.

31. Resolved: that we give our missionaries a rising vote of thanks.

32. Resolved: that we give our District Superintendent a rising vote of thanks for his untiring service.

33. Resolved: that we give our District Treasurer and the District Secretary a rising vote of thanks.

34. Resolved: that we give a rising vote of thanks to the Camp Meeting Committee for their services during our Camp and Assembly.

35. Resolved: that we give a rising vote of thanks to our cooks, kitchen and dining room workers for the good meals prepared and for their service.

36. Resolved: that we give a rising vote of thanks to the Statistical Committee for their service.

37. Resolved: that we give a rising vote of thanks to the Editing Committee.

38. Resolved: that we give a rising vote of thanks to each of the churches for so liberally donating produce to our Camp and Assembly.

39. Resolved: that we give a rising vote of thanks to the local church and community for their co-operation.

RECOMMENDATIONS OF THE WAYS AND MEANS COMMITTEE

1. We recommend: that we adopt the system of raising Foreign Missionary money requested by the General Church Board as follows: that each church have a Weekly Prayer Service and that a Missionary Rally be held monthly on the Lord's Day, and at this service an offering be taken for Foreign Missions, same to be forwarded to the District Treasurer.

2. In order to raise our District and General Budget, we recommend that each church raise an amount equivalent to \$3.00 per member per year (except probationary members and children under 14 years of age), same to be paid monthly.

3. We recommend: that the District Treasurer be paid \$100.00 per year and the District Secretary be paid \$50.00, same to be paid in equal monthly payments.

4. We recommend: that each Sunday School of our District pay 10c per week for a Tent Fund. We further recommend that each Sunday School adopt the Birthday Offering plan, said offering to go toward the Tent and Home Missionary Fund.

5. We recommend: that all active pastors and evangelists pay two-thirds of their tithe to the District Superintendent; all other licensed and ordained ministers to be assessed \$12.00 per year, same to be paid monthly. Failure to do so each month will call for the action of the District Council.

6. We recommend: that the District Superintendent's salary remain \$1,200.00 per year, and that he be paid 3c per mile for traveling expenses.

7. We recommend: that we pay 30 per cent of the assessment of the Laity to the General Budget and that the remaining 70 per cent be left in the District as a sinking fund, and in the event that sufficient funds are not received from the Ministerial tithes and assessments to meet the District Superintendent's salary, that the same be paid from the sinking fund.

9. We recommend: that each member of our church in this district pay 10c per year into the District Treasury, same to be held in trust as a General Assembly Expense Fund.

10. We recommend: that each church take a free-will offering for the District Superintendent on his regular visits, same to be credited to said church's District budget, when reported by the Superintendent to the Treasurer.

11. We recommend: that pledges be taken by the Superintendent to help defray the Camp and Assembly expenses of 1937, same to be forwarded to the District Treasurer during the year. Said pledges to be taken immediately, and, further at the Superintendent's discretion.

12. We recommend: that in as much as this State is included in the Owosso, Michigan, Bible School Zone, we therefore "strongly" recommend that our people patronize our own Bible School; we further recommend that we raise an equivalent of 25c per member per year for this school.

13. We recommend: that each church pay as much as \$5.00 on the expenses of the pastor and delegate to the District Assembly. We further recommend that the amount raised be equally divided, providing the pastor and delegate do not go to the Assembly together.

14. Whereas there is a pressing need for funds to erect buildings to house our people, we recommend that we as an Assembly make strenuous efforts this

year to raise such funds. The same to be used at the discretion of the District Council.

15. We recommend: that each church raise a sum equivalent to \$1.00 per member, per year (except probationary members and children under 14 years of age), for Home Missions. Same to be forwarded to the District Treasurer monthly.

16. We recommend: that the Superintendent and the Treasurer be vested with power to purchase bond, or insurance, as required to securely cover the Treasurer and all District monies.

DISTRICT TREASURER'S REPORT

FOR YEAR ENDING AUG. 10, 1936

Receipts as follows:

General Budget	\$ 283.96
Sinking Fund	1,167.29
Home Missions	527.90
Foreign Missions	1,133.85
District Minutes	40.35
Ministers' Tithes and Assessments.....	1,149.77
District Tent	105.16
District Camp	89.09
District Camp and Evangelists	405.36
General Assembly Expense	38.21
District Building Fund	115.71
Rescue Home	1.00

Total Receipts.....\$5,057.65

Expenditures as follows:

General Budget	\$ 284.72
Home Missions	393.94
Foreign Missions	1,133.85
District Superintendent's Salary.....	1,200.00
District Superintendent's Traveling Expense.....	300.00
District Secretary	50.00
District Treasurer	50.00
District Tent	75.00
District Camp (1936).....	32.00
District Camp and Evangelist (1935).....	405.36
Rescue Home	1.00
Miscellaneous	378.53

Total Expenditures.....\$4,304.40

Balance in Treasury.....753.25

\$5,057.65

PAID TO FOREIGN MISSIONS

1928	\$87.50	1933	\$334.44
1929		1934	\$304.29
1930	\$57.61	1935	\$730.72
1931	\$129.98	1936	\$1,133.85
1932			

CHURCH REPORTS

Ashland First Church—Rev. and Mrs. F. E. Williams, pastors. Number of church services conducted, 55; prayer services, 45; services assisted in, 5; sermons preached, 155; pastoral calls, 836; homes prayed in, 700; revivals in local church, 2; individuals seeking regeneration, 68; individuals seeking sanctification, 17; souls dealt with in personal work, 200; prayed with for healing, 55; funerals, 3; Advocate subscriptions, 18; cash support, \$621.62; estimated donations, \$146.06; total support, \$767.68.

Statistical—Members on roll last report, 28; names dropped from roll, 3; deaths, 2; total removals, 5; additions by profession of faith, 6; total additions,

6; present membership, 29; ordained ministers, 1; licensed ministers, 1; deaconesses, 1; members in full standing, 27; total membership, 29; members of voting age now on roll, 29; preaching services, 129; jail or prison services, 4; church prayer services, 62; cottage meetings, 22; total services, 217; tithers, 19; Advocate subscriptions, 18.

Financial—Cash brought forward, \$1.84; regular offerings, \$1,557.14; total receipts, \$1,358.98; pastor's support, \$767.71; rents, \$30.00; interest, \$99.25; improvements, \$8.08; indebtedness, \$78.50; evangelists, \$53.79; Dist. Supt., \$7.29; dist. budget, \$53.55; home missions, \$27.02; tent fund, \$12.66; foreign missions, \$15.37; incidentals, \$205.59; total expenditures, \$1,358.81; cash on hand, \$0.17; church valuation, \$5,000.00; debt, \$717.50; equity, \$4,282.50; parsonage valuation, \$1,000.00; debt, \$712.00; equity, \$288.00; total property valuation, \$6,000.00; total debt, \$1,429.50; total equity, \$4,570.50.

Sunday School—Gross enrollment, 138; officers and teachers, 16; average weekly attendance, 118; average weekly attendance last report, 114; sessions, 52; cash brought forward, \$14.27; regular offerings, \$176.44; birthday offerings, \$14.99; total receipts, \$265.70; literature, \$62.98; equipment, \$134.42; total expenditures, \$197.40; cash on hand, \$8.30.

Young People's Society—Number of meetings held, 41; members last report, 5; present membership, 39; active, 9; associate, 9; honorary, 24; gain, 34; cash brought forward, \$0.01; offerings received, \$3.52; total receipts, \$3.53; books, \$2.20; cash on hand, \$1.33.

Ashland Second—Rev. P. O. Carpenter, pastor. Number of church services conducted, 75; prayer services conducted, 32; services assisted in, 28; sermons preached, 91; pastoral calls, 600; homes prayed in, 429; individuals seeking regeneration, 18; souls dealt with in personal work, 54; prayed with for healing, 14; marriages, 3; funerals, 6; Advocate subscriptions, 26; total cash support, \$780.00; estimated donations, \$211.90; total support, \$991.90.

Statistical—Members on roll last report, 36; transferred by letter, 1; deaths, 1; total removals, 2; additions by profession of faith, 6; received on probation, 2; total additions, 8; ordained ministers, 2; local ministers, 1; deaconesses, 1; probationary members, 2; members in full standing, 37; total membership, 41; members of voting age now on roll, 39; preaching services, 137; church prayer services, 49; cottage meetings, 15; young people's services, 47; total services, 248; tithers, 20.

Financial—Offerings, \$1,631.45; pastor's support, \$780.00; evangelists, \$190.80; Dist. Supt., \$6.85; pastor's donations, \$211.90; dist. budget, \$93.00; home missions, \$15.00; ministerial tithe, \$61.00; foreign missions, \$47.60; incidentals, \$99.70; charity, \$125.60; total expenditures, \$1,631.45; church valuation, \$2,000.00.

Sunday School—Gross enrollment, 208; officers and teachers, 10; net enrollment, 198; average weekly attendance, 120; average weekly attendance last report, 118; sessions, 52; cash brought forward, \$6.67; regular offerings, \$115.70; birthday offerings, \$16.47; special, \$31.22; total receipts, \$170.06; dist. camp expenses, \$6.00; tent fund, \$5.20; literature, \$40.84; equipment, \$50.11; foreign missions, \$50.70; home missions, \$12.00; total expenditures, \$164.85; cash on hand, \$5.21.

Ashland Third—Rev. A. W. Stowers, pastor. Church services conducted, 81; prayer services conducted, 54; services assisted in, 60; pastoral calls, 52; homes prayed in, 52; revivals in local church, 2; individuals seeking regeneration, 10; individuals seeking sanctification, 6; baptisms, 3; prayed with for healing, 10; funerals, 4; total cash support, \$12.17.

Statistical—Members on roll last report, 30; ordained ministers, 1; licensed ministers, 1; members in full standing, 30; total membership, 31; members of voting age now on roll, 31; preaching services, 110; church prayer services, 52; cottage meetings, 45; total services, 207.

Financial—Regular offerings, \$54.71; evangelist, \$3.10; miscellaneous, \$17.00; total receipts, \$99.39; pastor's support, \$39.71; evangelists, \$3.10; Dist. Supt., \$15.00; lights and fuel, \$24.58; total expenditures, \$82.39; cash on hand, \$17.00; church valuation, \$2,500.00; debt, \$900.00.

Sunday School—Gross enrollment, 124; officers and teachers, 6; average weekly attendance, 50; average weekly attendance last report, 51; sessions, 51; cash brought forward, \$8.58; regular offerings, \$32.17; birthday offerings, \$6.18;

special, \$2.72; total receipts, \$49.05; literature, \$18.78; special, \$11.24; total expenditures, \$30.02; cash on hand, \$19.03.

Ashland Fourth—Rev. Wm. Duncan, pastor. Church services conducted, 20; prayer services, 35; services assisted in, 10; sermons preached, 42; calls, 20; homes prayed in, 18; revivals in local church, 1; individuals seeking regeneration, 4; individuals seeking sanctification, 2; souls dealt with in personal work, 6; prayed with for healing, 10; funerals, 3; total cash support, \$10.00; estimated donations, \$4.00; total support, \$14.00.

Statistical—Members on roll last report, 14; names dropped from roll, 1; transferred by letter, 1; total removals, 2; present membership, 12; ordained ministers, 1; local ministers, 1; members in full standing, 10; total membership, 12.

Sunday School—Gross enrollment, 90; average weekly attendance, 45; average weekly attendance last report, 52; cash brought forward, \$3.82; regular offerings, \$38.82; birthday offerings, \$3.82; total receipts, \$46.46; literature, \$29.56; miscellaneous, \$13.64; total expenditures, \$43.20; cash on hand, \$3.26.

Aspen Grove—Rev. C. E. Johnson, pastor. Number of church services conducted, 91; prayer services conducted, 43; services assisted in, 28; sermons preached, 78; pastoral calls, 185; homes prayed in, 174; revivals in local church, 1; individuals seeking regeneration, 20; souls dealt with in personal work, 40; Advocate subscriptions, 2; total cash support, \$188.62; estimated donations, \$157.95; total support, \$346.57.

Statistical—Members on roll last report, 19; names dropped from roll, 2; transferred by letter, 1; total removals, 3; present membership, 16; ordained ministers, 1; local ministers, 1; members in full standing, 16; total membership, 18; members of voting age now on roll, 18; preaching services, 112; church prayer services, 45, cottage meetings, 25; total services, 182; tithers, 8; Advocate subscriptions, 3.

Financial—Cash brought forward, \$8.02; regular offerings, \$347.69; pastor's tithe, \$20.79; 1935 camp meeting, \$43.70; coal, tent, foreign and home missions, \$19.50; dormitory, \$4.00; foreign missions, \$29.96; total receipts, \$473.66; pastor's support, \$195.95; pastor's tithe, \$20.79; interest, \$20.58; dormitory, \$4.00; indebtedness, \$9.00; evangelists, \$18.00; Dist. Supt., \$1.00; dist. budget, \$25.60; home missions, \$18.00; minutes, \$1.50; tent fund, \$2.50; incidentals, \$60.36; miscellaneous, \$4.55; total expenditures, \$455.53; cash on hand, \$18.13; church valuation, \$2,500.00; debt, \$343.00.

Sunday School—Gross enrollment, 84; officers and teachers, 5; net enrollment, 35; average weekly attendance, 23; average weekly attendance last report, 25; sessions, 50; cash brought forward, \$6.36; regular offerings, \$27.23; birthday offerings, \$6.35; total receipts, \$39.94; literature, \$12.56; equipment, \$12.00; home missions, \$11.00; tent fund, \$2.50; total expenditures, \$38.06; cash on hand, \$1.88.

Barterville—Rev. H. C. Snapp, pastor. Number of church services conducted, 175; prayer services conducted, 150; revivals held in local church, 3; individuals seeking regeneration, 10; individuals seeking sanctification, 5; marriages, 1; funerals, 2.

Statistical—Members on roll last report, 18; deaths, 3; additions by profession of faith, 2; present membership, 17; ordained ministers, 1; deaconesses, 2; members in full standing, 16; total membership, 17; members of voting age now on roll, 15; preaching services, 106; church prayer services, 151; cottage meetings, 42; total services, 299; tithers, 4; Advocate subscriptions, 2.

Financial—Regular offerings, \$137.20; improvements, \$25.00; evangelists, \$110.00; Dist. Supt., \$2.20; total expenditures, \$137.20.

Sunday School—Gross enrollment, 44; officers and teachers, 7; average weekly attendance, 25; average weekly attendance last report, 21; sessions, 49; total receipts, \$30.76; total expenditures, \$29.58; cash on hand, \$1.18.

Carrollton—Rev. and Mrs. L. S. Houston, pastors. Church services conducted, 118; prayer services conducted, 72; services assisted in, 90; sermons preached, 273; pastoral calls, 623; homes prayed in, 496; revivals held in local church, 1; revivals in other churches, 3; individuals seeking regeneration, 94; individuals seeking sanctification, 48; souls dealt with in personal work, 151; children dedicated, 4; prayed with for healing, 14; marriages, 7; funerals, 4; Advocate

subscriptions, 12; total cash support, \$331.61; estimated donations, \$116.27; total support, \$447.88.

Statistical—Members on roll, 22; dropped from roll, 2; total removals, 2; additions by profession of faith, 6; by letter, 1; total additions, 7; present membership, 27; ordained ministers, 2; licensed ministers, 1; members in full standing, 25; total membership, 27; preaching services, 104; open air services, 23; jail and prison services, 69; funerals, 5; total services, 293; tithers, 12; Advocate subscriptions, 12.

Financial—Pastor's support, \$519.75; interest, \$9.50; improvements, \$15.40; indebtedness, \$179.10; evangelist, \$80.65; Dist. Supt., \$5.58; budget, \$45.87; home missions, \$17.45; tent fund, \$4.80; foreign missions, \$31.33; incidentals, \$142.10; total expenditures, \$1,066.93; cash on hand, \$2.69; property valuation, \$3,500.00.

Sunday School—Gross attendance, 100; officers and teachers, 7; average weekly attendance, 74; average weekly attendance last report, 43; sessions, 52; regular offerings, \$71.53; birthday offerings, \$13.41; total receipts, \$84.94; literature, \$34.20; home missions, \$13.41; incidentals, \$31.53; total expenditures, \$79.14; cash on hand, \$5.80.

Central City—Rev. D. D. Fortner, pastor. Number of church services conducted, 110; prayer services conducted, 44; services assisted in, 51; sermons preached, 76; pastoral calls, 91; homes prayed in, 30; revivals in local church, 2; individuals seeking regeneration, 16; individuals seeking sanctification, 5; souls dealt with in personal work, 17; baptisms, 6; prayed with for healing, 17; marriages, 1; Advocate subscriptions, 2; total cash support, \$36.45; estimated donations, \$8.12; total support, \$44.57.

Statistical—Members on roll last report, 16; additions by profession of faith, 4; present membership, 20; ordained ministers, 1; local ministers, 1; members in full standing, 18; total membership, 20; members of voting age now on roll, 18; preaching services, 146; church prayer services, 44; total services, 190; tithers, 7; Advocate subscriptions, 2.

Financial—Regular offerings, \$126.82; pastor's support, \$44.57; rents, \$57.50; lights, \$8.50; coal, \$3.20; evangelists, \$8.05; dist. budget, \$1.80; home missions, \$0.25; foreign missions, \$1.30; tent fund, \$0.15; ministerial tithe, \$1.50; total expenditures, \$126.82.

Sunday School—Gross enrollment, 55; officers and teachers, 7; average weekly attendance, 35; sessions, 52; regular offerings, \$11.75; literature, \$6.16; church expenses, \$3.00; delegate and camp expenses, \$1.50; total expenditures, \$10.66; cash on hand, \$1.09.

Young People's Society—Number of meetings, 50; members last report, 20; present membership, 24; active, 10; associate, 12; honorary, 2; gain, 4; offerings received, \$8.71; piano, \$6.92; camp expenses, \$1.25; miscellaneous, \$0.54; total expenditures, \$8.51; cash on hand, \$0.20.

Cloverport—Revs. P. J. Stewart and Ezra McVey, pastors. Number of church services, 168; prayer services, 71; services assisted in, 31; sermons preached, 150; pastoral calls, 344; homes prayed in, 266; individuals seeking regeneration, 21; individuals seeking sanctification, 16; souls dealt with in personal work, 12; prayed with for healing, 5; marriages, 1; funerals, 5; Advocate subscriptions, 14; total cash support, \$401.49; estimated donations, \$145.75; total support, \$547.24.

Statistical—Members on roll last report, 37; names dropped from roll, 9; transferred by letter, 3; total removals, 12; additions by letter, 2; present membership, 27; ordained ministers, 1; licensed ministers, 2; deaconesses, 1; members in full standing, 23; total membership, 27; members of voting age now on roll, 27; preaching services, 139; church prayer services, 46; cottage meetings, 7; total services, 192; tithers, 12; Advocate subscriptions, 14.

Financial—Cash brought forward, \$1.54; regular offerings, \$506.54; total receipts, \$508.08; pastor's support, \$189.46; rents, \$85.00; evangelists, \$67.15; Dist. Supt., \$29.05; dist. minutes, \$1.50; dist. budget, \$13.40; home missions, \$5.66; camp funds, \$4.00; foreign missions, \$2.12; incidentals, \$69.89; tent funds, \$2.93; total expenditures, \$470.16; cash on hand, \$37.92.

Sunday School—Gross enrollment, 116; officers and teachers, 6; net enrollment, 110; average weekly attendance, 40; average weekly attendance last report, 45; sessions, 52; cash brought forward, \$1.18; regular offerings, \$29.46; birthday offerings, \$0.23; tent fund, \$1.65; total receipts, \$32.52; literature,

\$17.92; tent fund and camp expenses, \$7.82; treat, \$3.78; miscellaneous, \$3.00; total expenditures, \$32.52.

Young People's Society—Number of meetings, 35; members last report, 45; present membership, 28; active, 14; honorary, 1; net loss, 17; offerings received, \$0.68; total expenditures, \$0.63; cash on hand, \$0.05.

Covington First—Rev. W. J. Crider, pastor. Number of church services conducted, 10; prayer services conducted, 7; services assisted in, 4; sermons preached, 10; pastoral calls, 15; individuals seeking regeneration, 3; individuals seeking sanctification, 1; Advocate subscriptions, 1; total cash support, \$95.00; estimated donations, \$15.05; total support, \$110.05.

Statistical—Members on roll last report, 78; names dropped from roll, 7; transferred by letter, 6; deaths, 1; total removals, 14; additions by profession of faith, 2; additions by letter, 7; total additions, 9; present membership, 73; ordained ministers, 4; licensed ministers, 3; local ministers, 4; deaconesses, 2; members in full standing, 60; total membership, 73; members of voting age now on roll, 71; tithers, 40.

Financial—Regular and special offerings, \$2,118.38; pastor's support, \$996.06; moving expenses, \$119.28; interest, \$278.30; improvements, \$16.00; indebtedness, \$45.00; evangelists, \$122.22; Dist. Supt., \$6.47; light, fuel and water, \$109.39; dist. budget, \$158.99; home missions, \$15.01; foreign missions, \$251.66; total expenditures, \$2,068.38; cash on hand, \$50.00; church valuation, \$15,000.00; debt, \$4,555.00.

Sunday School—Gross enrollment, 114; officers and teachers, 9; average weekly attendance, 77; average weekly attendance last report, 88; sessions, 52; cash brought forward, \$12.39; regular offerings, \$226.40; birthday offerings, \$11.86; total receipts, \$250.65; home missions, \$11.86; literature, \$79.53; equipment, \$74.67; tent and camp fund, \$11.00; other expenses, \$73.59; total expenditures, \$250.65.

Young People's Society—Number of meetings held, 49; members present last report, 42; present membership, 29; active, 21; associate, 1; honorary, 5; loss, 13; cash brought forward, \$7.29; offerings received, \$14.41; total receipts, \$21.60; total expenditures, \$19.04; cash on hand, \$2.56.

Covington Second—Rev. and Mrs. W. E. Honeycutt, pastors. Number of church services conducted, 232; prayer services conducted, 81; services assisted in, 210; sermons preached, 83; pastoral calls, 55; homes prayed in, 375; revivals held in local church, 2; prayed with for healing, 33; Advocate subscriptions, 4; total cash support, \$599.59; estimated donations, \$34.96; total support, \$634.55.

Statistical—Members on roll last report, 45; names dropped from roll, 19; additions by profession of faith, 3; present membership, 37; ordained ministers, 1; licensed ministers, 2; local ministers, 2; deaconesses, 3; members in full standing, 34; total membership, 37; members of voting age now on roll, 30; preaching services, 116; church prayer services, 48; cottage meetings, 45; missionary services, 1; total services, 210; tithers, 14; Advocate subscriptions, 4.

Financial—Cash brought forward, \$2.66; regular offerings, \$1,271.33; property sold, \$2,419.58; total receipts, \$3,693.57; pastor's support, \$608.09; rents, \$125.00; indebtedness, \$2,419.58; evangelists, \$90.58; Dist. Supt., \$1.36; tent fund, \$5.20; dist. budget, \$54.75; home missions, \$18.23; camp fund, \$6.00; foreign missions, \$221.92; incidentals, \$93.04; ministerial tithe, \$43.66; total expenditures, \$3,687.41; cash on hand, \$6.16; church valuation, \$3,700.00; equity, \$3,700.00.

Sunday School—Gross enrollment, 47; officers and teachers, 8; net enrollment, 39; average weekly attendance, 45; number of sessions, 52; cash brought forward, \$3.48; regular offerings, \$73.85; birthday offerings, \$5.14; total receipts, \$82.47; literature, \$40.69; equipment, \$16.33; home missions, \$12.00; tent fund and camp expenses, \$11.20; total expenditures, \$80.22; cash on hand, \$2.25.

Elizabethtown—Rev. H. H. Bolender, pastor. Number of church services conducted, 118; prayer services conducted, 51; services assisted in, 101; sermons preached, 118; pastoral calls, 638; homes prayed in, 352; other church revival, 1; individuals seeking regeneration, 68; individuals seeking sanctification, 37; souls dealt with in personal work, 155; number of baptisms, 2; children dedicated, 2; prayed with for healing, 19; marriages, 9; funerals, 10; Advocate subscriptions, 8; total cash support, \$354.00; estimated donations, \$106.00; total support, \$460.00.

Statistical—Members on roll last report, 55; names dropped from roll, 17; transferred by letter, 2; total removals, 19; additions by profession of faith, 9; additions by letter, 2; total additions, 11; present membership, 47; ordained ministers, 2; local ministers, 1; probationary members, 1; members in full standing, 44; total membership, 47; members of voting age now on roll, 41; preaching services, 150; open air services, 1; jail or prison services, 12; church prayer services, 49; cottage meetings, 41; total services, 253; tithers, 33; Advocate subscriptions, 9.

Financial—Regular offerings, \$1,038.58; special offerings, \$139.07; total receipts, \$1,177.65; pastor's support, \$354.00; interest, \$124.08; improvements, \$5.38; indebtedness, \$318.20; evangelists, \$100.21; Dist. Supt., \$5.80; dist. budget, \$150.00; home missions, \$41.56; foreign missions, \$49.02; incidentals, \$147.80; ministerial tithes, \$26.60; total expenditures, \$1,177.65; church valuation, \$4,500.00; debt, \$1,786.00; equity, \$2,714.00.

Sunday School—Gross enrollment, 137; officers and teachers, 9; average weekly attendance, 73; average weekly attendance last report, 81; sessions, 52; cash brought forward, \$3.38; regular offerings, \$65.04; birthday offerings, \$11.89; special offerings, \$23.99; total receipts, \$104.30; home missions, \$11.98; tent fund, \$5.20; literature, \$26.00; equipment, \$10.00; church budget, \$21.19; miscellaneous, \$20.02; total expenditures, \$94.39; cash on hand, \$9.91.

Young People's Society—County farm services, 12; meetings held, 52; total meetings, 64; members last report, 28; present membership, 28; active members, 19; associate members, 2; honorary members, 7; regular offerings, \$15.57; special offerings, \$2.21; total receipts, \$17.78; missions, \$7.32; song books, \$4.08; Christmas program, \$2.00; Easter treat, \$1.47; miscellaneous, \$0.10; total expenditures, \$14.97; cash on hand, \$2.81.

Erlanger—Revs. Lloyd Robinson and Brown Holland, pastors. Number of church services conducted, 152; prayer services conducted, 69; services assisted in, 74; sermons preached, 75; pastoral calls, 235; homes prayed in, 159; revivals held in local church, 3; individuals seeking regeneration, 20; individuals seeking sanctification, 8; souls dealt with in personal work, 148; prayed with for healing, 64; Advocate subscriptions, 3; total cash support, \$140.44; estimated donations, \$99.82; total support, \$240.26.

Statistical—Members on roll last report, 25; names dropped from roll, 8; transferred by letter, 3; deaths, 1; total removals, 12; present membership, 13; ordained ministers, 1; licensed ministers, 1; probationary members, 2; total membership, 13; members of voting age now on roll, 13; preaching services, 166; church prayer services, 41; cottage meetings, 29; total services, 236; tithers, 4; Advocate subscriptions, 2.

Financial—Regular offerings, \$544.08; pastor's support, \$134.46; rents, \$100; evangelists, \$62.31; Dist. Supt., \$17.76; dist. budget, \$12.30; home missions, \$5.55; foreign missions, \$6.61; incidentals, \$70.80; total expenditures, \$544.08; lot valuation, \$262.21.

Sunday School—Gross enrollment, 48; officers and teachers, 6; sessions, 43; regular offerings, \$55.95; birthday offerings, \$2.79; rent and electricity, \$34.04; literature, \$19.12; total expenditures, \$55.95.

Falmouth—Rev. Lloyd Robinson, pastor. Church services conducted, 117; services assisted in, 5; sermons preached, 70; pastoral calls, 180; homes prayed in, 71; revivals, 2; seeking regeneration, 57; seeking sanctification, 22; dealt with in personal work, several; assisted in 1 baptism; prayed with for healing, 8; funerals, 4; subscription and renewals, 6; cash support received, \$202.99; estimated donations, \$13.00; total support, \$215.99.

Statistical—Members on roll last report, 14; dropped from roll, 5; transferred by letter, 1; total removals, 6; received on probation, 6; additions by letter, 10; total additions, 10; present membership, 24; ordained ministers, 1; licensed ministers, 1; local ministers, 1; deaconesses, 1; members in full standing, 21; total membership, 24; members of voting age now on roll, 23; preaching services, 95; prayer services, 49; cottage meetings, 1; total services, 145; tithers, 16; renewals and subscriptions to the "Advocate," 11.

Financial—Cash brought forward, nothing; total receipts, \$530.71; pastor's support, \$202.99; assistant pastor, \$10.05; improvements, \$35.00; evangelists, \$38.50; dist. budget, \$46.81; home missions, \$35.00; camp and assembly, \$15.00;

foreign missions, \$36.90; incidentals, \$46.36; insurance on the church, \$15.00; total expenditures, \$530.71; church value, \$1,500.00.

Sunday School—Gross attendance, 63; officers and teachers, 6; average weekly attendance, 42; average weekly attendance last report, 29; sessions, 51; cash brought forward, \$3.70; regular offerings, \$39.44; birthday offerings, \$6.63; foreign missions, \$11.20; total receipts, \$60.97; literature, \$11.50; equipment, \$40.08; total expenditures, \$51.58; cash on hand, \$9.39.

Frankfort—Rev. K. A. Brannon, pastor. Number of church services conducted, 225; prayer services conducted, 35; sermons preached, 140; pastoral calls, 600; revivals in local church, 4; individuals seeking regeneration, 60; individuals seeking sanctification, 23; baptisms, 18; prayed with for healing, 8; marriages, 2; Advocate subscriptions, 2; total cash support, \$245.00; estimated donations, \$50.00; total support, \$295.00.

Statistical—Additions by profession of faith, 23; present membership, 23; ordained ministers, 1; licensed ministers, 1; total membership, 23; preaching services, 225; jail or prison services, 35; cottage meetings, 30; total services, 280; tithers, 14; Advocate subscriptions, 2.

Financial—Regular offerings, \$569.65; gifts, \$50.00; help from dist., \$105.32; Sunday School, \$42.86; total receipts, \$767.83; pastor's support, \$245.00; rents, \$226.51; fuel and water, \$46.88; lights, \$35.05; evangelists, \$104.85; piano, \$54.00; lumber, \$21.40; miscellaneous, \$7.10; foreign missions, \$8.00; literature, \$9.04; total expenditures, \$767.83.

Sunday School—Gross enrollment, 100; officers and teachers, 6; sessions, 52; cash forwarded, \$0.83; regular offerings, \$42.26; birthday offerings, \$0.45; total receipts, \$43.54; literature, \$8.04; miscellaneous, \$1.00; church fund, \$33.82; total expenditures, \$42.86; cash on hand, \$0.68.

Garvin Hill—Rev. Jack Tackett, pastor. Number of church services conducted, 72; prayer services conducted, 48; services assisted in, 53; sermons preached, 59; pastoral calls, 127; homes prayed in, 90; individuals seeking regeneration, 14; individuals seeking sanctification, 21; souls dealt with in personal work, 20; baptisms, 2; children dedicated, 1; prayed with for healing, 6; marriages, 3; funerals, 3; Advocate subscriptions, 9; cash support, \$283.58; estimated donations, \$23.10; total support, \$306.68.

Statistical—Members on roll last report, 28; transferred by letter, 1; additions by profession of faith, 1; present membership, 28; ordained ministers, 1; licensed ministers, 1; members in full standing, 26; total membership, 28; members of voting age now on roll, 28; preaching services, 109; church prayer services, 52; cottage meetings, 51; total services, 212; tithers, 10; Advocate subscriptions, 6.

Financial—Regular offerings, \$477.90; pastor's support, \$281.48; food for assembly, \$4.50; evangelists, \$67.90; Dist. Supt., \$0.96; minister's tithe, \$23.27; dist. budget, \$16.96; home missions, \$14.27; minutes, \$1.55; foreign missions, \$14.56; incidentals, \$46.85; delegate expenses, \$5.00; total expenditures, \$477.90; church valuation, \$1,000; equity, \$1,000.

Sunday School—Gross enrollment, 136; average weekly attendance, 91; sessions, 51; regular offerings, \$20.20; birthday offerings, \$7.24; special offerings, \$8.19; total receipts, \$35.63; literature, \$14.63; tent fund, \$0.60; missions, \$10.10; special offerings, \$8.19; total expenditures, \$33.52; cash on hand, \$2.11.

Glancy Fork—Rev. M. F. Leadingham, pastor. Number of church services conducted, 48; sermons preached, 80; pastoral calls, 25; homes prayed in, 25; revivals in local church, 1; individuals seeking regeneration, 15; prayed with for healing, 2; marriages, 2; funerals, 2; total cash support, \$26.05; estimated donations, \$14.05; total support, \$40.10.

Statistical—Members on roll last report, 20; dropped from roll, 1; transferred by letter, 1; total removals, 2; present membership, 19; licensed ministers, 1; members in full standing, 18; total membership, 19; members of voting age now on roll, 19; preaching services, 48; church prayer services, 37; cottage meetings, 4; total meetings, 89.

Financial—Total receipts, \$69.41; total expenditures, \$65.56; cash on hand, \$3.85.

Hitchins—Rev. Kenneth Fleming, pastor. Number of church services conducted, 12; prayer services conducted, 4; services assisted in, 15; sermons

preached, 97; pastoral calls, 25; homes prayed in, 15; individuals seeking regeneration, 6; individuals seeking sanctification, 6; souls dealt with in personal work, 30; number prayed with for healing, 2; funerals, 8; total cash support received, \$147.47; total support, \$147.47.

Statistical—Members on roll last report, 55; names dropped from roll, 6; transferred by letter, 2; total removals, 8; additions by profession of faith, 8; total additions, 8; present membership, 47; licensed ministers, 4; local ministers, 2; deaconesses, 2; members in full standing, 47; total membership, 55; members of voting age on roll, 55; number of preaching services, 98; church prayer services, 51; cottage meetings, 22; total services, 171; number of tithers, 10; subscriptions to Advocate, 6.

Financial—Regular offerings, \$367.38; pastor's support, \$147.47; rent, \$12.10; improvements, \$37.84; indebtedness, \$5.70; evangelists, \$28.21; Dist. Supt., \$2.99; tent fund, \$0.10; dist. budget, \$20.64; home missions, \$7.35; foreign missions, \$7.06; incidentals, \$73.40; lights, \$12.33; fuel, \$12.19; total expenditures, \$367.38; church valuation, \$2,000.

Sunday School—Gross enrollment, 175; officers and teachers, 7; net enrollment, 167; average weekly attendance, 99; average weekly attendance last report, 95; sessions, 8; regular offerings, \$34.77; birthday offerings, \$0.16; special offerings, \$9.47; total receipts, \$44.40; literature, \$24.09; miscellaneous, \$17.87; charity, \$2.44; total expenditures, \$44.40.

Kingswood—Rev. F. W. Singleton, pastor. Number of church services conducted, 153; prayer services conducted, 43; services assisted in, 220; sermons preached, 150; pastoral calls, 250; homes prayed in, 200; revivals held in local church, 1; individuals seeking regeneration, 20; individuals seeking sanctification, 14; prayed with for healing, 2; marriages, 1; funerals, 1; Advocate subscriptions, 4; total cash support, \$310.28; estimated donations, \$35.00; total support, \$345.28.

Statistical—Members on roll last report, 16; transferred by letter, 1; present membership, 16; ordained ministers, 3; licensed ministers, 1; members in full standing, 12; total membership, 16; members of voting age now on roll, 16; preaching services, 98; church prayer services, 42; cottage meetings, 25; special prayer services, 43; revival services, 46; total services, 254; tithers, 16; Advocate subscriptions, 4.

Financial—Regular offerings, \$481.32; pastor's support, \$238.74; rent, lights, etc., \$38.76; evangelists, \$64.13; Dist. Supt., \$44.41; dist. budget, \$30.00; home missions, \$34.42; foreign missions, \$24.51; general budget, \$4.75; gen. assembly fund, \$1.60; total expenditures, \$481.32.

Sunday School—Gross enrollment, 44; officers and teachers, 9; net enrollment, 39; average weekly attendance, 29; average weekly attendance last report, 18; sessions, 44; regular offerings, \$25.53; literature, \$15.56; tent fund, \$4.70; miscellaneous, \$0.87; local expenses, \$2.90; total expenditures, \$24.03; cash on hand, \$1.50.

Liberty—Rev. John Headley, pastor. Number of church services conducted, 38; services assisted in, 21; sermons preached, 78; pastoral calls, 40; homes prayed in, 40; revivals in local church, 1; individuals seeking regeneration, 1; souls dealt with in personal work, 3; prayed with for healing, 4; total cash support, \$57.84; estimated donations, \$13.15; total support, \$70.99.

Statistical—Members on roll last report, 16; transferred by letter, 4; present membership, 12; deaconesses, 1; members in full standing, 12; total membership, 12; members of voting age now on roll, 12; preaching services, 99; church prayer services, 48; total services, 147.

Financial—Cash brought forward, \$9.89; regular offerings, \$213.03; total receipts, \$222.92; pastor's support, \$79.99; evangelists, \$61.00; Dist. Supt., \$1.82; dist. budget, \$10.55; home missions, \$2.65; foreign missions, \$21.48; incidentals, \$45.60; total expenditures, \$222.89; cash on hand, \$0.03; church valuation, \$1,500.

Sunday School—Gross enrollment, 24; officers and teachers, 3; average weekly attendance, 16; average weekly attendance last report, 21; sessions, 50; cash brought forward, \$5.23; regular offerings, \$11.56; birthday offerings, \$0.24; total receipts, \$17.03; expenditures, \$16.24; cash on hand, \$0.79.

Louisville—Rev. C. F. Shields and wife, pastors. Number of church services conducted, 155; prayer services, 59; services assisted in, 150; sermons preached,

177; pastoral calls, 269; homes prayed in, 182; revivals held in local church, 1; revivals held off charge, 2; seeking regeneration, 62; seeking sanctification, 28; souls dealt with in personal work, some over 14; prayed with for healing, 38; funerals, 1; renewals and subscriptions to the "Advocate," 38; total cash support received, \$488.31; estimated donations, \$73.47; received off charge, \$67.00; total support, \$618.78.

Statistical—Members on roll last report, 17; additions by profession of faith, 10; additions by letter, 10; present membership, 27; ordained ministers, 1; licensed ministers, 3; local ministers, 1; deaconesses, 1; probationary members, 3; members in full standing, 19; total membership, 27; members of voting age now on roll, 27; preaching services, 104; prayer services, 40; cottage meetings, 39; total services, 183; tithers, 18; renewals and subscriptions to the "Advocate," 18.

Financial—Regular offerings, \$1,294.56; total receipts, \$1,294.56; pastor's support, \$488.31; indebtedness, \$217.50; evangelists, \$113.97; Dist. Supt., \$10.55; minister's tithe, \$27.55; dist. budget, \$37.22; home missions, \$43.47; foreign missions, \$37.86; incidentals, \$282.90; total expenditures, \$1,259.33; cash on hand, \$35.23; value of church, \$4,000.00; debt of church, \$1,282.50.

Sunday School—Gross enrollment, 91; officers and teachers, 9; average weekly attendance, 49; average weekly attendance last report, 27; sessions, 52; cash brought forward, \$7.11; regular offerings, \$83.94; total receipts, \$91.05; literature, \$44.08; equipment, \$28.89; camp fund, \$4.50; tent fund, \$4.80; total expenditures, \$82.27; cash on hand, \$8.28.

Maysville—Rev. M. M. Benner, pastor. Number of church services conducted, 138; prayer services conducted, 50; services assisted in, 25; sermons preached, 144; pastoral calls, 350; homes prayed in, 278; revivals in local church, 2; individuals seeking regeneration, 62; individuals seeking sanctification, 30; prayed with for healing, 25; marriages, 2; funerals, 6; Advocate subscriptions, 15; total cash support, \$504.90; gifts, \$125.34; donations, \$39.33; total support, \$669.57.

Statistical—Members on roll last report, 29; additions by profession of faith, 1; received on probation, 3; total additions, 4; ordained ministers, 1; licensed ministers, 3; local ministers, 1; deaconesses, 2; probationary members, 14; members in full standing, 26; total membership, 44; members of voting age now on roll, 30; preaching services, 129; church prayer services, 47; cottage meetings, 9; other services, 5; total services, 190.

Financial—Cash brought forward, \$7.18; regular offerings, \$1,224.24; total receipts, \$1,231.42; pastor's support, \$669.57; rents, \$113.50; improvements, \$48.55; evangelists, \$114.83; Dist. Supt., \$0.45; dist. budget, \$75.00; home missions, \$15.85; ministerial tithe, \$33.59; foreign missions, \$26.54; general assembly expenses, \$2.70; minutes, \$2.05; incidentals, \$113.94; tent fund, \$4.90; camp fund, \$4.05; total expenditures, \$1,225.52; cash on hand, \$5.90.

Sunday School—Gross enrollment, 69; officers and teachers, 7; average weekly attendance, 46; sessions, 52; cash brought forward, \$7.42; regular offerings, \$52.70; birthday offerings, \$3.08; total receipts, \$63.10; camp expenses, \$1.58; literature, \$28.53; tent funds, \$2.85; missions, \$6.53; special, \$21.40; total expenditures, \$60.89; cash on hand, \$2.21.

Young People's Society—Number of meetings, 36; members last report, 15; present membership, 12; active, 8; honorary, 4; loss, 3; total receipts, \$2.08; cash on hand, \$2.08.

Morehead—Rev. J. L. Estes, pastor. Number of church services conducted, 90; prayer services conducted, 10; services assisted in, 60; sermons preached, 90; pastoral calls, 37; homes prayed in, 32; individuals seeking regeneration, 32; individuals seeking sanctification, 16; souls dealt with in personal work, 100; baptisms, 9; prayed with for healing, 16; marriages, 3; funerals, 1; Advocate subscriptions, 3; cash support received, \$13.43; estimated donations, \$12.00; total support, \$55.48.

Statistical—Members on roll last report, 12; names dropped from roll, 2; additions by profession of faith, 4; present membership, 14; ordained ministers, 1; deaconesses, 2; members in full standing, 14; total membership, 15; members in full standing, 15; preaching services, 51; open air services, 7; church prayer services, 5; cottage meetings, 5; total services, 68; tithers, 6; Advocate subscriptions, 3.

Financial—Regular offerings, \$109.00; pastor's support, \$15.79; rents, \$32.00; evangelists, \$51.81; incidentals, \$9.40; \$109.00.

Sunday School—Gross enrollment, 53; officers and teachers, 9; average weekly attendance, 35; sessions, 9; regular offerings, \$5.71; literature, \$3.78; total expenditures, \$3.78; cash on hand, \$1.93.

Olive Hill—Rev. Jack Tackett, pastor. Number of church services conducted, 89; prayer services conducted, 57; services assisted in, 40; sermons preached, 78; pastoral calls, 188; homes prayed in, 125; individuals seeking regeneration, 19; individuals seeking sanctification, 23; souls dealt with in personal work, 25; baptisms, 5; prayed with for healing, 22; marriages, 2; funerals, 4; Advocate subscriptions, 12; total cash support, \$394.62; estimated donations, \$27.89; total support, \$422.51.

Statistical—Members on roll last report, 33; names dropped from roll, 4; additions by profession of faith, 12; additions by letter, 1; total additions, 13; licensed ministers, 1; local ministers, 2; deaconesses, 1; members in full standing, 38; total membership, 42; members of voting age now on roll, 42; preaching services, 135; church prayer services, 46; cottage meetings, 23; total services, 204; tithers, 21; Advocate subscriptions, 8.

Financial—Regular offerings, \$572.08; home missions, \$5.95; foreign missions, \$6.34; ministerial tithe, \$25.35; budget, \$25.90; minutes, \$1.50; total receipts, \$637.12; pastor's support, \$394.62; interest, \$41.00; evangelists, \$63.18; Dist. Supt., \$0.93; tent fund, \$0.58; dist. budget, \$25.90; home missions, \$5.95; foreign missions, \$6.34; incidentals, \$62.34; ministerial tithe to dist., \$25.35; total expenditures, \$626.19; cash on hand, \$10.93; church valuation, \$2,500.00; debt, \$1,256.00; equity, \$1,244.00.

Sunday School—Gross enrollment, 126; officers and teachers, 8; average weekly attendance, 84; average weekly attendance last report, 74; sessions, 51; cash brought forward, \$4.30; regular offerings, \$32.59; birthday offerings, \$3.90; total receipts, \$40.79; literature, \$29.33; special offering, \$7.16; total expenditures, \$36.49; cash on hand, \$4.30.

Pinson Fork—Revs. B. F. Durham and W. C. Miller, pastors. Number of church services conducted, 125; prayer services conducted, 75; services assisted in, 92; sermons preached, 224; pastoral calls, 263; homes prayed in, 103; revivals held in local church, 3; individuals seeking regeneration, 15; individuals seeking sanctification, 7; souls dealt with in personal work, 27; baptisms, 2; prayed with for healing, 62; funerals, 4; Advocate subscriptions, 6; total cash support, \$261.36; estimated donations, \$95.00; total support, \$356.36.

Statistical—Members on roll last report, 27; names dropped from roll, 1; additions by profession of faith, 2; present membership, 28; ordained ministers, 1; licensed ministers, 2; local ministers, 2; members in full standing, 23; total membership, 28; members of voting age now on roll, 28; preaching services, 123; church prayer services, 46; cottage meetings, 12; total services, 181; tithers, 15; Advocate subscriptions, 5.

Financial—Regular offerings, \$677.88; pastor's support, \$273.34; rents, \$183.00; ministerial tithe, \$22.01; evangelists, \$37.18; Dist. Supt., \$7.49; est. support, \$70.00; dist. budget, \$14.91; home missions, \$6.72; camp meeting, \$15.00; foreign missions, \$9.05; tent fund, \$3.50; Bible Schools, \$55.86; dist. camp, \$0.48; minutes, \$1.35; total expenditures, \$677.83.

Sunday School—Gross enrollment, 131; officers and teachers, 7; average weekly attendance, 87; sessions, 51; cash brought forward, \$9.01; regular offerings, \$29.49; birthday offerings, \$4.47; miscellaneous, \$1.19; total receipts, \$44.16; literature, \$23.67; equipment, \$17.62; total expenditures, \$41.29; cash on hand, \$2.87.

Prestonsburg—Rev. Lawrence Steele, pastor. Number of church services conducted, 166; prayer services conducted, 73; services assisted in, 7; sermons preached, 192; pastoral calls, 189; homes prayed in, 154; revivals in local church, 5; individuals seeking regeneration, 133; individuals seeking sanctification, 41; souls dealt with in personal work, 119; baptisms, 20; prayed with for healing, 47; marriages, 2; funerals, 3; Advocate subscriptions, 21; cash support, \$404.38; estimated donations, \$60.60; total support, \$464.98.

Statistical—Members on roll last report, 21; names dropped from roll, 1; transferred by letter, 3; total removals, 4; additions by profession of faith, 3;

present membership, 20; ordained ministers, 2; members in full standing, 18; total membership, 20; members of voting age now on roll, 20; preaching services, 139; open air services, 9; jail or prison services, 10; church prayer services, 52; cottage meetings, 52; total services, 262; tithers, 7; Advocate subscriptions, 6.

Financial—Regular offerings, \$335.52; other offerings, \$192.23; ministerial tithes, \$31.90; total receipts, \$559.65; pastor's support, \$347.47; evangelists, \$37.05; Dist. Supt., \$1.05; dist. budget, \$28.85; home missions, \$9.35; foreign missions, \$13.18; incidentals, \$90.80; ministerial tithe, \$31.90; total expenditures, \$559.65; church valuation, \$2,500.

Sunday School—Gross enrollment, 100; officers and teachers, 7; net enrollment, 93; average weekly attendance, 48; average weekly attendance last report, 65; sessions, 52; cash brought forward, \$3.28; regular offerings, \$39.64; birthday offerings, \$4.10; special offerings, \$8.00; total receipts, \$55.02; literature, \$17.51; equipment, \$0.70; special, \$35.02; total expenditures, \$53.93; cash on hand, \$1.79.

Rockdale—Rev. Donald Ross, pastor. Church services conducted, 29; prayer services conducted, 4; services assisted in, 20; sermons preached, 31; pastoral calls, 23; homes prayed in, 34; individuals seeking regeneration, 2; individuals seeking sanctification, 2; souls dealt with in personal work, 3; prayed with for healing, 33; subscriptions to Advocate secured, 5; total cash support received, \$66.25; estimated donations, \$7.80; total support, \$74.05.

Statistical—Members on roll last report, 12; transferred by letter, 2; total removals, 2; additions by letter, 2; total additions, 2; present membership, 12; ordained ministers, 1; licensed ministers, 1; members in full standing, 10; total membership, 12; members of voting age on roll, 12; number of preaching services, 35; church prayer services, 17; cottage meetings, 4; missionary meetings, 3; total services, 59; tithers, 10; Advocate subscriptions, 5.

Financial—Cash brought forward, \$1.49; regular offerings, \$131.50; total receipts, \$132.90; pastor's support, \$66.25; Dist. Supt., \$7.50; camp, \$1.81; district budget, \$30.80; home missions, \$5.01; state tent, \$2.25; foreign missions, \$15.90; incidentals, \$2.85; total expenditures, \$132.35; cash on hand, \$0.55.

Sunday School—Number of sessions, 13; total attendance, 150; cash brought forward, \$1.39; regular offerings, \$2.73; total receipts, \$4.12; literature, \$3.49; total expenditures, \$3.49; cash on hand, \$0.63.

Rush—Rev. Thos. Alexander, pastor. Number of church services conducted, 80; prayer services conducted, 20; services assisted in, 41; sermons preached, 151; pastoral calls, 58; homes prayed in, 60; revivals in local church, 1; individuals seeking regeneration, 26; individuals seeking sanctification, 14; souls dealt with in personal work, 120; prayed with for healing, 5; marriages, 6; funerals, 16; Advocate subscriptions, 5; cash support received, \$78.50; estimated donations, \$22.05; total support, \$100.55.

Statistical—Members on roll last report, 32; names dropped from roll, 11; transferred by letter, 1; total removals, 12; received by letter, 1; present membership, 21; ordained ministers, 1; local ministers, 1; deaconesses, 3; members in full standing, 20; total membership, 21; members of voting age now on roll, 21; preaching services, 118; church prayer services, 46; cottage meetings, 11; women's prayer services, 9; total services, 175; tithers, 7; Advocate subscriptions, 5.

Financial—Regular offerings, \$74.50; budget, \$31.45; ministerial tithe, \$8.50; tithes, \$36.40; total receipts; pastor's support, \$29.57; improvements, \$12.32; evangelists, \$22.71; Dist. Supt., \$2.11; dist. budget, \$31.45; home missions, \$3.75; foreign missions, \$2.60; incidentals, \$37.84; ministerial tithes, \$8.50; total expenditures, \$150.85; regular church, \$150.85; Sunday School, \$58.76; young people's society, \$4.61; birthday offering, \$9.86; grand total, \$224.08; regular church expenditures, \$150.85; Sunday School, \$40.68; young people's society song books, \$4.61; home missions, \$9.86; Sunday School treat, \$14.44; grand total, \$220.44; cash on hand in all departments, \$3.64.

Sunday School—Gross enrollment, 120; officers and teachers, 7; average weekly attendance, 62; average weekly attendance last report, 51; sessions, 52; cash brought forward, \$1.41; regular offerings, \$57.35; birthday offerings, \$9.86; total receipts, \$68.62; literature, \$40.68; Sunday School treat, \$14.44; home missions, \$9.86; total expenditures, \$64.98; cash on hand, \$3.64.

Salem—Rev. Frank W. May, pastor. Number of church services conducted, 93; prayer services conducted, 37; services assisted in, 73; sermons preached, 93; pastoral calls, 84; homes prayed in, 65; revivals in local church, 2; individuals seeking regeneration, 29; individuals seeking sanctification, 13; prayed with for healing, 8; funerals, 1; Advocate subscriptions, 4; total cash support, \$143.65; estimated donations, \$31.80; total support, \$175.45.

Statistical—Members on roll last report, 15; names dropped from roll, 1; present membership, 14; ordained ministers, 1; members in full standing, 14; total membership, 14; members of voting age now on roll, 12; preaching services, 82; church prayer services, 41; cottage meetings, 12; total services, 155; tithers, 14; Advocate subscriptions, 3.

Financial—Regular and special offerings, \$269.20; total receipts, \$269.20; pastor's support, \$143.65; indebtedness, \$5.75; evangelists, \$57.70; Dist. Supt., \$1.47; dist. budget, \$12.93; home missions, \$1.04; foreign missions, \$4.65; incidentals, \$42.01; total expenditures, \$269.20.

Sunday School—Gross enrollment, 44; officers and teachers, 5; average weekly attendance, 29; sessions, 41; regular offerings, \$22.41; literature, \$8.41; equipment, \$11.86; total expenditures, \$20.27; cash on hand, \$2.14.

Soldier—Rev. Robert Weedman, pastor. Prayer services conducted, 18; services assisted in, 25; sermons preached, 18; pastoral calls, 75; homes prayed in, 53; seeking regeneration, 9; seeking sanctification, 5; dealt with in personal work, 41; children dedicated, 1; prayed with for healing, 1; subscriptions and renewals to the "Advocate," 9; total cash support received, \$81.00; estimated donations, \$15.87; total support, \$96.87. (Pastor on charge three months.)

Statistical—Members on roll last report, 31; dropped from roll, 2; total removals, 2; ordained ministers, 1; licensed ministers, 1; members in full standing besides ministerial, 24; total membership, 29; members of voting age now on roll, 29; preaching services, 135; prayer services, 49; cottage meetings, 60; missionary prayer services, 43; total services, 287; tithers, 16; renewals and subscriptions to the "Advocate," 14.

Financial—Cash brought forward, \$1.17; regular offerings, \$613.42; total receipts, \$614.60; pastor's support, \$442.19; rents, \$5.00; evangelists, \$47.06; Dist. Supt., \$0.21; miscellaneous, \$0.80; dist. budget, \$25.00; home missions, \$7.58; special item, \$25.13; foreign missions, \$18.25; incidentals, \$20.42; camp meeting, \$1.00; dist. minutes, \$0.30; total expenditures, \$592.95; cash on hand, \$21.65; church value, \$2,500.00; church equity, \$2,500.00.

Sunday School—Gross enrollment, 141; officers and teachers, 6; net enrollment, 135; average weekly attendance, 94; average weekly attendance last report, 99; sessions, 52; regular offerings, \$47.32; birthday offerings, \$5.16; other offerings, \$33.25; total receipts, \$93.62; literature, \$32.10; equipment, \$5.16; miscellaneous, \$7.89; other expenditures, \$39.92; total expenditures, \$15.07; cash on hand, \$8.55.

South Portsmouth—Rev. Mrs. Esther Coffey, pastor. Number of church services conducted, 20; prayer services conducted, 15; services assisted in, 18; sermons preached, 32; pastoral calls, 26; homes prayed in, 14; individuals seeking regeneration, 18; individuals seeking sanctification, 6; souls dealt with in personal work, 12; baptisms, 1; prayed with for healing, 8; Advocate subscriptions, 2.

Statistical—Members on roll last report, 11; names dropped from roll, 4; additions by profession of faith, 1; present membership, 12; licensed ministers, 1; local ministers, 2; deaconesses, 1; probationary members, 1; members in full standing, 12; total membership, 12; members of voting age now on roll, 12; preaching services, 63 church prayer services, 52; cottage meetings, 80; total services, 195; tithers, 3; Advocate subscriptions, 2.

Financial—Cash brought forward, \$2.00; regular offerings, \$114.56; rents, \$36.00; Dist. Supt., \$7.80; dist. budget, \$15.90; home missions, \$12.00; foreign missions, \$23.16; incidentals, \$17.70; total expenditures, \$112.56.

Sunday School—Gross enrollment, 27; officers and teachers, 5; average weekly attendance, 18; average weekly attendance last report, 18; sessions, 48; regular offerings, \$10.06; literature, \$5.55; cash on hand, \$4.51.

Stinson—Rev. Charles Gollihue, pastor. Church services, 30; prayer services, 30; services assisted in, 50; sermons preached, 25; pastoral calls, 3; homes

prayed in, 8; revivals in church, 6; souls seeking regeneration, 6; seeking sanctification, 3; souls dealt with in personal work, 10; number of baptisms, 7; prayed with for healing, 4; funerals, 2; renewals and subscriptions to the Advocate, 7; cash support received, \$6.80; estimated donations, \$5.00; total support, \$11.80.

Financial—Receipts, \$14.61; pastor's support, \$10.00; evangelist's support, \$4.61.

Statistical—Members on roll last report, 12; present membership, 12; members in full standing besides ministerial, 12; total membership, 13; members of voting age, 9; preaching services, 3; prayer services, 10; cottage meetings, 1; other services, 3; total services, 17; number of tithers, 4.

Sunday School—Officers and teachers, 6; net enrollment, 30; average weekly attendance, 25; average weekly attendance last report, 30; sessions, 8; total receipts, 87; total expenditures, \$0.87.

Toler—Rev. Elliott Murphy, pastor. Number of church services conducted, 36; prayer services conducted, 18; services assisted in, 1; sermons preached, 60; homes prayed in, 15; individuals seeking regeneration, 4; souls dealt with in personal work, 4; prayed with for healing, 11; funerals, 1.

Statistical—Members on roll last report, 16; present membership, 16; licensed ministers, 1; local ministers, 1; deaconesses, 2; probationary members, 1; members in full standing, 13; total membership, 16; members of voting age on roll, 16; number of preaching services, 60; church prayer services, 18; total services, 78; tithers, 2.

Financial—Regular offerings, \$106.97; offerings, \$92.59; total receipts, \$209.54; pastor's support, \$34.48; evangelists, \$57.63; budget, \$4.45; foreign missions, \$3.70; incidentals, \$6.71; additional expenditures, \$92.59; total expenditures, \$209.54; cash on hand in all departments, \$1.08; church valuation, \$2,000.

Sunday School—Gross enrollment, 98; teachers and officers, 6; sessions, 48; regular offerings, \$39.57; literature, \$21.94; equipment, \$4.55; lights, \$12.00; total expenditures, \$38.49; cash on hand, \$1.08.

Trace—Rev. Thomas Alexander, pastor. (Minister's report included with Rush.)

Statistical—Members on roll last report, 18; names dropped from roll, 2; present membership, 16; local ministers, 2; total membership, 16; members of voting age now on roll, 16; preaching services, 48; church prayer services, 40; cottage meetings, 5; total services, 93; tithers, 10; Advocate subscriptions, 2.

Financial—Regular offerings, \$132.33; pastor's support, \$54.43; evangelists, \$9.00; Dist. Supt., \$2.50; home missions, \$13.00; foreign missions, \$10.00; general budget, \$33.40; incidentals, \$10.00; total expenditures, \$132.33; church valuation, \$1,500.00.

Sunday School—Gross enrollment, 68; officers and teachers, 6; average weekly attendance, 45; average weekly attendance last report, 50; number of sessions, 52; offerings, \$20.56; literature, \$20.56.

Tram—Rev. Elsie Ackerman, pastor. Number of church services conducted, 125; prayer services conducted, 117; services assisted in, 83; sermons preached, 40; pastoral calls, 125; homes prayed in, 113; revivals in local church, 2; individuals seeking regeneration, 25; individuals seeking sanctification, 16; souls dealt with in personal work, 19; baptisms, 4; prayed with for healing, 20; Advocate subscriptions, 3; total cash support, \$69.85; estimated donations, \$42.70; total support, \$112.55.

Statistical—Members on roll last report, 22; names dropped from roll, 1; total removals, 1; additions by letter, 1; total additions, 1; present membership, 21; total membership, 21; members of voting age now on roll, 21; preaching services, 125; church prayer services, 117; total services, 242; number of tithers, 10; Advocate subscriptions, 3.

Financial—Offerings, \$120.82; visiting pastor and evangelist, \$57.25; missionary offering, \$29.99; total receipts, \$208.06; pastor's support, \$69.85; rents, \$6.00; evangelists, \$56.15; Dist. Supt., \$2.61; dist. budget, \$6.39; home missions, \$10.00; foreign missions, \$27.45; incidentals, \$29.61; total expenditures, \$208.05; church valuation, \$500; debt, \$16.44.

Sunday School—Teachers and officers, 6; average weekly attendance, 59; number of sessions, 51; regular offerings, \$37.29; literature, \$13.21; equipment, \$24.08; total expenditures, \$37.29.

Wheelwright—Rev. Claude Sexton, pastor. Number of church services conducted, 86; prayer services conducted, 20; services assisted in, 78; sermons preached, 86; pastoral calls, 107; homes prayed in, 115; revivals in local church, 2; individuals seeking regeneration, 27; individuals seeking sanctification, 14; souls dealt with in personal work, 74; baptisms, 4; prayed with for healing, 12; Advocate subscriptions, 4; total cash support, \$77.50; estimated donations, \$23.73; total support, \$101.23.

Statistical—Members on roll last report, 26; names dropped from roll, 5; transferred by letter, 3; total removals, 8; additions by profession of faith, 2; present membership, 20; local ministers, 2; members in full standing, 20; total membership, 22; members of voting age on roll, 13; number of preaching services, 120; church prayer services, 44; cottage meetings, 44; total services, 208; tithers, 8; Advocate subscriptions, 3.

Financial—Cash brought forward, \$7.21; regular offerings, \$563.33; total receipts, \$570.54; pastor's support, \$77.50; rents, \$72.00; evangelists, \$120.00; Dist. Supt., \$7.00; special singer, \$10.00; dist. budget, \$51.00; home missions, \$28.05; janitor, \$30.00; foreign missions, \$19.04; ministerial tithe, \$105.72; pastor's other support, \$23.73; miscellaneous, \$26.50; total expenditures, \$570.54.

Statistical—Members on roll last report, 26; names dropped from roll, 5; transferred by letter, 3; total removals, 8; additions by profession of faith, 2; present membership, 20; local ministers, 2; members in full standing, 20; total membership, 22; members of voting age now on roll, 13; preaching services, 120; jail or prison services, 44; church prayer services, 44; total services, 208; tithers, 8; Advocate subscriptions, 3.

Sunday School—Gross enrollment, 109; officers and teachers, 5; average weekly attendance, 73; average weekly attendance last report, 33; sessions, 52; cash brought forward, \$1.70; regular offerings, \$28.46; total receipts, \$30.16; literature, \$15.13; tent fund, \$4.80; miscellaneous, \$7.39; total expenditures, \$27.32; cash on hand, \$2.84.

Willard—Rev. A. T. Fauson, pastor. Number of church services conducted, 30; prayer services conducted, 30; services assisted in, 50; sermons preached, 25; pastoral calls, 3; homes prayed in, 8; individuals seeking regeneration, 6; individuals seeking sanctification, 3; souls dealt with in personal work, 10; baptisms, 7; prayed with for healing, 4; funerals, 2; Advocate subscriptions, 7; total cash support, \$6.80; estimated donations, \$5.00; total support, \$11.80.

Statistical—Members on roll last report, 42; names dropped from roll, 12; transferred by letter, 3; total removals, 15; additions by profession of faith, 6; present membership, 19; ordained ministers, 1; licensed ministers, 3; local ministers, 1; deaconesses, 1; members in full standing, 19; total membership, 23; members of voting age now on roll, 20; preaching services, 114; church prayer services, 52; cottage meetings, 40; total services, 206; tithers, 6; Advocate subscriptions, 10.

Financial—Offerings, \$151.94; pastor's support, \$36.52; rent for evangelist, \$2.00; indebtedness, \$7.79; evangelists, \$82.49; Dist. Supt., \$1.57; dist. budget, \$3.02; home missions, \$2.24; foreign missions, \$10.93; incidentals, \$2.37; coal, \$2; total expenditures, \$151.94; property valuation, \$1,000; debt, \$47.21.

Sunday School—Gross enrollment, 52; officers and teachers, 7; net enrollment, 52; average weekly attendance, 32; average weekly attendance last report, 25; sessions, 51; regular offerings, \$15.56; birthday offerings, \$2.53; miscellaneous, \$2.50; literature, \$10.85; equipment, \$2.50; tent fund, \$2.53; janitor, \$1.31; total expenditures, \$17.19; cash on hand, \$3.40.

SUMMARY OF TOTALS

Churches and Missions.....	43	Subscriptions to the Advocate.....	244
Church buildings	22	Tithers	376
Parsonages	7	Ordained ministers	38
Preaching services	4,092	Licensed ministers	37
Church prayer meetings.....	1,909	Ordained deaconesses	1
Cottage prayer meetings.....	2,635	Licensed deaconesses	18
Total services	9,446	Local preachers	17
Members dropped	119	Sunday Schools	37
Members transferred	35	Average S. S. attendance.....	1,780
Deaths	8	Y. P. S. societies.....	4

Total removals	142.140	Y. P. S. enrollment.....	110
Additions by profession of faith.....	157.717	Y. P. S. meetings.....	234
Additions by letter.....	39	Pastors' support (cash).....	\$8,820.05
Net gain	24.29	Pastors' support (donations).....	\$1,446.97
Total members	920	Evangelists' support	\$1,839.02
Sermons preached by pastors.....	3,341	Paid on indebtedness.....	\$3,626.01
Pastoral calls	6,575	Paid on improvements.....	\$1,059.02
Revivals	50	Rent	\$916.35
Professed regeneration	866	Incidentals	\$2,020.14
Professed sanctification	416	Total receipts of all depts.....	\$23,067.65
Anointed, prayed with for healing.....	602	Total expenditures	\$22,829.44
Baptisms	85	Cash on hands in all depts.....	\$238.21
Marriages	50	Value of church property.....	\$69,962.21
Funerals	94	Total indebtedness	\$11,877.86
Children dedicated	8		

MISSION REPORTS

Burris Chapel—Rev. Forest Benner, pastor. Church services conducted, 45; prayer services, 12; services assisted in, 70; sermons preached, 31; pastoral calls, 50; homes prayed in, 12; revivals in local church, 1; individuals seeking regeneration, 3; individuals seeking sanctification, 2; souls dealt with in personal work, 20; prayed with for healing, 4; total cash support, \$25.00; estimated donations, \$5.00; total support, \$30.00.

Cottageville—Rev. M. M. Benner, pastor. Church services conducted, 70; prayer services, 5; sermons preached, 70; pastoral calls, 40; homes prayed in, 35; revival in local church, 1; individuals seeking regeneration, 6; individuals seeking sanctification, 2; prayed with for healing, 5; funerals, 1; Advocate subscriptions, 4; total cash support, \$59.39; gifts, \$3.00; donations, \$64.00; total support, \$126.39.

Dalesburg—Rev. M. M. Benner, pastor. Church services conducted, 28; prayer services, 2; sermons preached, 26; pastoral calls, 30; homes prayed in, 25; revivals in local church, 1; individuals seeking regeneration, 2; marriages, 1; Advocate subscriptions, 1; cash support, \$30.18; estimated donations, \$11.56; total support, \$41.74.

Ludlow—Rev. Sam Carson, pastor. Church services conducted, 118; prayer services, 85; services assisted in, 94; sermons preached, 60; pastoral calls, 185; homes prayed in, 180; revivals in mission, 4; individuals seeking regeneration, 45; individuals seeking sanctification, 27; souls dealt with in personal work, 30; Baptisms, 6; prayed with for healing, 82; marriages, 5; funerals, 4; Advocate subscriptions, 1; cash support, \$326.66; estimated donations, \$24.00; total support, \$350.66.

Paintsville—Rev. G. W. Rose, pastor. Church services conducted, 18; prayer services, 10; services assisted in, 8; sermons preached, 21; pastoral calls, 6; homes prayed in, 10; revivals assisted in, 1; individuals seeking regeneration, 4; individuals seeking sanctification, 3; souls dealt with in personal work, 15; prayed with for healing, 5; marriages, 1; funerals, 6.

Pikeville—

EVANGELISTS' AND UNSTATIONED MINISTERS' REPORTS

Rev. Bessie Banc—Prayer services, 24; preached, 20; homes prayed in, 20; Advocate subscriptions, 2.

Rev. Sallie A. Baynum—Prayer services, 3; homes prayed in, 3; individuals seeking regeneration, 1; individuals seeking sanctification, 1; souls dealt with in personal work, 15; prayed with for healing, 2.

Rev. P. O. Carpenter—Sermons preached, 38; homes prayed in, 10; revivals in P. H. churches, 2; individuals seeking regeneration, 38; individuals seeking sanctification, 20; prayed with or anointed for healing, 2; received for support, \$124.80; Advocate subscriptions for the pastors, 23.

Rev. Minnie Denham—Church services conducted, 1; prayer services, 1; services assisted in, 3; sermons preached, 2; homes prayed in, 6; prayed with for healing, 2.

Rev. Wm. Duncan—Number of sermons preached, 51; individuals seeking regeneration, 14; individuals seeking sanctification, 11; prayed with for healing, 2; funerals, 1; total cash support, \$121.40.

Rev. J. B. Edmond—Sermons preached, 70; homes prayed in, 26; Advocate subscriptions, 10.

Rev. L. S. Houston—Number of sermons preached, 97; revivals held in P. H. churches, 3; revivals held elsewhere, 1; total revivals, 4; individuals seeking regeneration, 76; individuals seeking sanctification, 38; prayed with for healing, 4; received for support, \$71.87.

Rev. E. L. Jackson—Number of prayer services conducted, 7; services assisted in, 80; sermons preached, 43; homes prayed in, 56; revivals held, 1; individuals seeking regeneration, 3; souls dealt with in personal work, 25; prayed with for healing, 3; funerals, 1; Advocate subscriptions, 2; total cash support, \$95.22; estimated donations, \$3.00; total support, \$98.22.

Rev. C. E. Johnson—Number of sermons preached, 52; calls, 14; homes prayed in, 21; individuals seeking regeneration, 4; individuals seeking sanctification, 2; souls dealt with in personal work, 25; revivals held, 4; total cash support, \$102.39; estimated donations, \$25.00; total support, \$127.39.

Rev. P. J. Stewart—Number of sermons preached, 109; revivals held in P. H. Churches, 6; revivals elsewhere, 1; total revivals, 7; individuals seeking regeneration, 85; individuals seeking sanctification, 24; received for support, \$145.

Rev. Lula Watson—Number of prayer services conducted, 5; sermons preached, 4; calls, 95; homes prayed in, 50; individuals seeking regeneration, 14; individuals seeking sanctification, 15; souls dealt with in personal work, 3; prayed with for healing, 4.

Rev. Robert Weedman—Sermons preached, 16; homes prayed in, 71; individuals seeking regeneration, 3; individuals seeking sanctification, 1; prayed with for healing, 14; received for support, \$16.20.

Rev. H. W. Whittinghill—Number of church services conducted, 51; prayer services conducted, 11; services assisted in, 142; sermons preached, 51; pastoral calls, 15; homes prayed in, 24; revivals held, 1; individuals seeking regeneration, 13; individuals seeking sanctification, 10; souls dealt with in personal work, 67; baptisms, 4; prayed with for healing, 2.

DEACONESSES' REPORTS

Mrs. Susan Alexander—Church services, 2; calls, 60; homes prayed in, 53; souls dealt with personally, 25.

Cordelia Cropper—Prayer services, 4; cottage prayer services, 4; calls, 48; homes prayed in, 16; number of poor homes helped, 7; souls dealt with personally, 25; professed regeneration, 1.

Carrie B. Dryden—Visits, 9; garments given away, 2; tracts and papers distributed, 287.

Mrs. Anna M. Evans—Services conducted, 2; preached, 2; visits, 41; homes prayed in, 34; poor helped, 24; gave \$18.00, besides food and clothing, to poor; souls dealt with personally, 13; professed regeneration, 4; professed sanctification, 4.

Mrs. Mary Hudson—Prayer services, 1; calls, 62; homes prayed in, 61; poor homes helped, 5; professed sanctification, 1; healed through prayer, 2; services assisted in, 10.

Maggie Johnson—Church services, 2; sermons preached, 2; calls, 42; homes prayed in, 15; poor healed, 18; souls dealt with personally, 20; professed regeneration, 3.

Lizzie McKnight—Cottage prayer services, 1; visits to sick, 26; homes prayed in, 8; souls dealt with personally, 2.

Lona Myers—Prayer services, 2; calls, 45; homes prayed in, 35; poor helped, 10; souls dealt with personally, 20; professed regeneration, 1.

Minnie Runyon—Calls, 20; homes prayed in, 3; souls dealt with personally, 10.

Amanda Tackett—Visits, 37; homes prayed in, 57; souls dealt with personally, 9; healing services, 6.

Newtonia Vallandingham—Prayer services, 12; children's services, 26.

Gertie Vincent—Church services, 2; prayer services, 8; cottage prayer services, 6; visits, 60; homes prayed in, 25; poor healed, 35; souls dealt with personally, 15; professed regeneration, 1.

Emma Whittinghill—Prayer services, 4; cottage prayer services, 1; other services, 6; preached, 1; visits, 51; homes prayed in, 36; poor helped, 9.

Clara Wilburn—Church services, 7; prayer services, 2; cottage prayer services, 3; visits, 73; homes prayed in, 52; poor helped, 14; souls dealt with personally, 22; professed regeneration, 4; professed sanctification, 3.

MINISTERIAL DIRECTORY

ORDAINED MINISTERS

Alley, G. W.	Warfield, Ky.
Alexander, Thomas	Rush, Ky.
Benner, M. M.	1206 Forest Ave., Maysville, Ky.
Bishop, Thomas	17 Alberta St., Ludlow, Ky.
Bolender, H. H.	Elizabethtown, Ky.
Bolender, Mrs. H. H.	Elizabethtown, Ky.
Bowling, Leonard	Van Lear, Ky.
Bowling, C. G.	4424 Decoursey Ave., Covington, Ky.
Brannon, K. A.	1810 Young St., Cincinnati, O.
Brannon, Mrs. K. A.	1810 Young St., Cincinnati, O.
Carpenter, P. O.	R. R. 2, Box 180, Ashland, Ky.
Carson, Samuel	1205 John St., Covington, Ky.
Crider, W. J.	816 Banklick St., Covington, Ky.
Duncan, William	2253 Smith St., Ashland, Ky.
Durham, B. F.	Pinson Fork, Ky.
Edmond, J. B.	Rush, Ky.
Estes, J. L.	Soldier, Ky.
Fortner, D. D.	601 N. 3rd St., Central City, Ky.
Glass, Cecil	Rockdale, Ky.
Houston, L. S.	Carrollton, Ky.
Houston, Mrs. L. S.	Carrollton, Ky.
Johnson, C. E.	143 Holmes St., Frankfort, Ky.
Keaton, Mrs. Martha	R. R. 2, Box 161, Catlettsburg, Ky.
Leadingham, E. E.	537 Pendleton St., Falmouth, Ky.
Lucas, B. H.	Ashland, Ky.
Maddox, S. R.	R. R. 3, Flemingsburg, Ky.
May, F. W.	Bradford, Ky.
Merritt, Charles	Barboursville, W. Va.
Robinson, Lloyd	4206 Plainville Rd., Cincinnati, O.
Rose, G. W.	Prestonsburg, Ky.
Rowan, E. L.	2551 Columbia Ave., Cincinnati, O.
Singleton, F. M.	Kingswood, Ky.
Snapp, H. C.	Barterville, Ky.
Steele, Lawrence	Prestonsburg, Ky.
Stewart, P. J.	Hitchens, Ky.
Wellman, G. L.	319 E. 10th St., Michigan City, Ind.
Williams, F. E.	2231 Liberty St., Ashland, Ky.
Wisner, J. A.	Kingswood, Ky.

LICENSED MINISTERS

First Year

Ackerman, Elsie	Tram, Ky.
Bane, Mrs. Bessie	Tolesboro, Ky.
Benner, Forest	Maysville, Ky.
Braam, Mrs. Eddie	1919 Young St., Cincinnati, O.
Baynum, Sallie	Bradford, Ky.
Coffey, Mrs. Esther	South Portsmouth, Ky.
Coon, Mary	Glendale, O.
Denham, Mrs. Minnie	Cloverport, Ky.
Duggins, C. W.	Kingswood, Ky.
Fausen, A. T.	Willard, Ky.
Fleming, Kenneth	Hitchens, Ky.
Forman, Marvin	R. R. 3, Maysville, Ky.
Gollihue, Charles	Willard, Ky.
Holland, Brown	103 Garvey Ave., Erlanger, Ky.
Honeycutt, J. P.	Hitchens, Ky.
Honeycutt, Mrs. J. P.	Hitchens, Ky.

Kelly, Harve Jeriel, Ky.
 Lee, Robert 1177 Harrison Ave., Cincinnati, O.
 Leadingham, M. F. Rush, Ky.
 McDavid, G. M. Ashland, Ky.
 Miller, W. C. Pinson Fork, Ky.
 Sexton, Claude Wheelwright, Ky.
 Shelton, Raymond 1810 Young St., Cincinnati, O.
 Stowers, A. W. Peter St., Williamson, Ky.
 Tackett, Jack Olive Hill, Ky.
 Weedman, Robert Soldier, Ky.
 Whittinghill, Hobart 326 E. College St., Louisville, Ky.
 York, R. H. Pinson Fork, Ky.

Second Year

McCord, Roland Milton, Ky.
 McVey, E. W. Cloverport, Ky.
 Ross, Donald 1811 Young St., Cincinnati, O.
 Shields, C. F.
 Shields, Mrs. C. F.
 Watson, Mrs. Lula Covington, Ky.
 Weedman, Robert Soldier, Ky.
 Williams, Mrs. F. E. 2231 Liberty St., Ashland, Ky.

Third Year

Senter, Graham F. 403 E. Shelby St., Falmouth, Ky.

DEACONESSES

Ordained

Evans, Anna M. Crittenden, Ky.

Licensed

Alexander, Mrs. Susan Rush, Ky.
 Bishop, Mr. Cecil 1933 Eastern Ave., Covington, Ky.
 Carpenter, Mrs. P. O. R. R. 2, Ashland, Ky.
 Creamer, Mrs. Mary 3455 Decoursey Ave., Latonia, Ky.
 Cropper, Cordelia Box 164, Ludlow, Ky.
 Dryden, Carrie B. 1206 Forest Ave., Maysville, Ky.
 Hudson, Mrs. Mary Falmouth, Ky.
 Jones, Ida Olive Hill, Ky.
 McKnight, Elizabeth Rush, Ky.
 McVey, Mrs. E. W. Cloverport, Ky.
 Meyers, Mrs. Lona 730 Craig St., Covington, Ky.
 Runyon, Mrs. Minnie Toler, Ky.
 Tackett, Amanda Rush, Ky.
 Vallandingham, Mrs. Newtonia Crittenden, Ky.
 Vincent, Mrs. Gertie C. Hitchens, Ky.
 Wilburn, Mrs. Clara Hitchens, Ky.
 Whittinghill, Mrs. Hobart 326 E. College St., Louisville, Ky.
 Wright, Mollie Willard, Ky.

LOCAL PREACHERS

Ashland First Curtis Simpson
 Ashland Second Charles May
 Central City Palmer E. Rhodes
 Covington First Earl McKenney and S. R. Sipple
 Elizabethtown Lawrence Stevens
 Falmouth Raymond Biddle
 Hitchens David Crum and Fred Crum
 Louisville E. J. Probst
 Maysville Lee Shoemaker
 Olive Hill Webber Crawford and Russell Patton
 Pinson Fork Minta Bryant and W. C. Coffey
 Rush David Tufts
 Soldier Noah Kelley, Mrs. J. L. Estes and Lurty Harn
 South Portsmouth Warren Coffey
 Toler Elliott Murphy
 Trace Mattie Pope and Homer Barber
 Wheelwright Curtis Cox

MINISTERIAL CONVENTION

to be held at

Louisville, Kentucky

April 5-8, 1937

DISTRICT CAMP MEETING

July 30-Aug. 8, 1937

Rev. L. L. Waddell, Evangelist

DISTRICT ASSEMBLY

Aug. 3-6, 1937