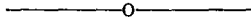
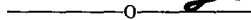


MINUTES OF THE THIRTY NINTH  
ANNUAL ASSEMBLY



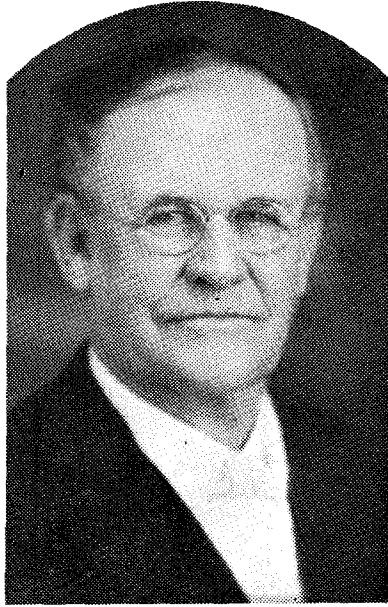
***PILGRIM HOLINESS  
CHURCH***

MICHIGAN DISTRICT



204

Held at  
OWOSSO, MICHIGAN, AUGUST 14 - 15, 1939



Rev. George B. Kulp, was born in Philadelphia, Penn., July 23, 1845. Died in Battle Creek, Michigan on July 21, 1939.

Under the rugged, uncompromising ministry of this able preacher of righteousness, the spiritual life of the church was quickened and hundreds were led into the kingdom of Christ. Nothing greater can be said of any man than to say that he is a great soul-winner. Brother Kulp was a great soul-winner.

Daniel 12:3. "They that be wise shall shine as the brightness of the firmament; and they that turn many to righteousness as the stars for ever and ever."

## OFFICIAL RECORD

**District Superintendent:** Rev. J. R. Thompson, 546 Ryan Street, Owosso, Michigan.

**Assistant District Superintendent:** Rev. C. E. Cliff, 705 13th St., Port Huron, Michigan.

**Secretary:** Rev. M. L. Goodman, 36 Corwin Street, Battle Creek, Michigan.

**Treasurer:** Rev. A. F. Osborn, Route 2, Merrill, Michigan.

**Advisory Members:** A. C. Doehring, Owosso; B. O. Shattuck, Flint; W. H. Joppie, Vermontville.

**Board of Examiners:** Rev. L. C. Philo, (1938-1943); Rev. C. E. Cliff, (1937-1942); Rev. A. S. Joppie, (1936-1941); Rev. B. O. Shattuck, (1935-1940); Rev. H. T. Mills, (1939-1944).

**District Trustees:** George DaFoe, Rev. George Lounds and Rev. H. T. Mills.

**Trustees of Bible Holiness Seminary:** Rev. J. R. Thompson, Rev. S. I. Emery; Rev. D. F. Price, (1938-1941); Rev. W. L. Surbrook; Rev. H. T. Mills; Rev. L. R. Neff, (1937-1940); Rev. C. E. Cliff; Rev. W. H. Joppie and Rev. C. V. Holstein, (1939-1942).

**From Ohio:** Rev. F. H. Tormohlen, Rev. C. P. Pridgen.

**From West Virginia:** Rev. J. C. Baynum.

**From Kentucky:** Rev. E. E. Leadingham.

**From Indiana:** Rev. Area Montgomery, Rev. D. E. Snow.

**From Illinois-Missouri:** Rev. W. G. Hennen.

## STANDING RULES

### 1 Assembly Year

The Assembly year shall close June 30 and complete reports must be in the hands of the District Secretary by July 20th following. All reports must be reviewed by the local board and the church before being forwarded to the District Secretary. All reports received after July 20th shall be omitted from the yearly report.

### 2 Funds

Each church shall raise for General Budget the equivalent of \$.50 per member per year for General Administrative Expense, \$.60 for General Home Missions, plus \$1.90 per member for Foreign Missions. They shall also raise for District Budget the equivalent of \$1.65 per member.

### 3 Bible School Debt Fund

Each church shall raise for the Bible School Debt Fund the equivalent of \$3.00 per member per year, plus \$12.00 per year for all licensed and ordained ministers. All monies raised for the Bible School Debt Fund plus other Bible School offerings shall be sent to the Bible School Treasurer, Rev. H. T. Mills, 1020 South Washington Street, Owosso, Michigan.

### 4 Ministerial Tithes

One half of all ministerial tithes shall be turned to the support of the District Superintendent.

### 5 District and General Funds

All monies raised in the local church for district and general funds shall be sent to the District Treasurer, who shall forward general funds to the General Treasurer.

### 6. District Officials Salaries

The District Superintendent's salary is fixed at a minimum of \$1,800.00 plus \$400.00 for his expenses. District Treasurer \$50.00 per year and District Secretary at \$50.00 per year.

### 7 Pastor's Camp Meeting Offering

In as much as our pastors are expected to support and attend the annual camp meeting, each church shall provide the regular pastor's offering for the two Sundays of the camp, and that the pastors be privileged to attend the entire camp meeting.

## ORDAINED MINISTERS OF THE MICHIGAN DISTRICT

W. L. Surbrook, General Superintendent  
14878 Greystone Ave., Detroit, Michigan

J. R. Thompson, Dist. Supt.  
546 Ryan St., Owosso, Mich.

C. E. Cliff, Asst. Supt.  
705 13th St., Port Huron

Arnold, W. P., unstationed	1106 Austin Ave., Flint, Mich.
Ballard, R. Kyle, pastoral	208 N. State St., Jackson, Mich.
Bennett, H. S., evangelist	309 E. Cross, Ypsilanti, Mich.
Bruce, Ila M., pastoral	139 E. Eighth St., Traverse City, Mich.
Chatfield, R. W., evangelist	723 Grand Ave., Owosso, Mich.
Doehring, A. C., pastoral	725 Grand Ave., Owosso, Mich.
Emery, S. I., evangelist	Bellaire, Mich.
Ewers, E. F., unstationed	607 S. Cedar, Owosso, Mich.
Ewers, Mrs. Ella, unstationed	607 S. Cedar, Owosso, Mich.
Farnsworth, I. M., pastoral	866 Fleming, Muskegon, Mich.
Fast, T. M., pastoral	115 Broad St., Eaton Rapids, Mich.
Ferris, B. B., retired	Bellaire, Mich.
Gaylord, Mary, missionary	Owosso, Mich.
Goodman, M. L., pastoral	36 Corwin St., Battle Creek, Mich.
Harris, A. T., unstationed	Flint, Mich.
Harmon, F. H., unstationed	Belvidere, Nebraska
Hoistein, C. V., pastoral	655 Delaware, S.E., Grand Rapids, Mich.
Hoos, T. H., pastoral	2910 W. Ionia, Lansing, Mich.
Hoos, Mrs. T. H., unstationed	2910 W. Ionia, Lansing, Mich.
Joppie, A. S., pastoral	1506 Bennett Ave., Flint, Mich.
Joppie, M. M., pastoral	Reese, Mich.
Joppie, W. H., evangelist	Vermontville, Mich.
Kridler, Albert, unstationed	Jamestown, Mich.
Kreider, H. B., pastoral	Grove St., Alma, Mich.
Lamb, Grace, unstationed	2811 Warsaw St., Fort Wayne, Ind.
Lash, Lillian R., unstationed	
Lounds, George, pastoral	426 Jerome St., Monroe, Mich.
Lounds, Anna, pastoral	426 Jerome St., Monroe, Mich.
Manker, B. E., pastoral	Hastings, Mich.
Meulman, J. F., pastoral	1016 Lippincotte Ave., Flint, Mich.
Miller, Goy, unstationed	Pigeon, Mich.
Mills, H. T., educational	1020 S. Washington St., Owosso, Mich.
Mohl, Russell, pastoral	Route 1, Davison, Mich.
Morgan, Clifford, evangelist	Thompsonville, Mich.
Morningstar, J. H., unstationed	109 N. Hamilton, Ypsilanti, Mich.
Mudge, I. L., pastoral	R. F. D. No. 3, Lansing, Mich.
Neff, L. R., pastoral	Applegate, Mich.
Nelsen, L. N., pastoral	Bellaire, Mich.
Osborn, A. F., pastoral	Route 2, Merrill, Mich.
Price, D. F., pastoral	8343 Ellsworth St., Detroit, Mich.
Philo, L. C., educational	1020 S. Washington St., Owosso, Mich.
Phipps, Kenneth, unstationed	1020 S. Washington St., Owosso, Mich.
Reed, F. D., pastoral	P. O. Box 657, Baseline, Mich.
Ritenburg, E. G.	911 N. Pine, Lansing, Mich.
Rogers, Howard, pastoral	1310 Knight St., Flint, Mich.
Rothwell, Mel. T.,	1020 S. Washington St., Owosso, Mich.
Sandberg, Jess, unstationed	North Park St., Owosso, Mich.
Skinner, G. V., evangelist	721 Division St., Owosso, Mich.
Shattuck, B. O., pastoral	947 Leland St., Flint, Mich.
Shetler, Emil, pastoral	821 Gott St., Ann Arbor, Mich.

Smith, J. W., retired ----- Lansing, Mich.  
 Stace, G. E., pastoral ----- Burnips, Mich.  
 Strong, Mrs. J. E., pastoral, 54 Grand View Court, Battle Creek, Mich.  
 Surbrook, Mrs. W. L., unstationed, 14878 Greydale Ave., Detroit, Mich.  
 Swanson, E. C., pastoral ----- Ellsworth, Mich.  
 Whorton, Deborah, unstationed ----- 50 Calvert Ave., Detroit, Mich.  
 Woods, Mrs. Harry, missionary ----- Korea

### THREE YEAR LICENTIATES

Bearup, Theron, unstationed ----- Flint, Mich.  
 Hendricks, Calvin ----- 705 Easterday Ave., Sault Ste. Marie, Mich.

### TWO YEAR LICENTIATES

Diller, Herbert, pastoral ----- Pontiac, Mich.  
 Appieton, Virgil, unstationed ----- 312 Grover St., Owosso, Mich.  
 Emlinger, P. D., pastoral ----- Ashley, Mich.  
 Haskins, Edgar, pastoral ----- 821 Simpson St., Kalamazoo, Mich.  
 Hawkins, Richard, pastoral ----- Newberry, U. P., Mich.  
 Manker, Mrs. B. E., pastoral ----- Hastings, Mich.  
 Robinson, H. L., unstationed ----- Flint, Mich.  
 Skinner, Mrs. G. V., evangelist ----- 721 Division, Owosso, Mich.  
 Yewey, Hazel, unstationed ----- Detroit, Mich.  
 Yoh, Walter, unstationed ----- R. F. D. No. 1, Fayette, Ohio

### ONE YEAR LICENTIATES

Brown, Leon, pastoral ----- 127 E. 15th St., Traverse City, Mich.  
 Bruce, LeRoy, pastoral ----- 4490 4th St., Ecorse, Mich.  
 DeGrandchamp, Paul, unstationed -----  
 Fast, Mrs. T. M., unstationed ----- 115 Broad St., Eaton Rapids, Mich.  
 Hoffman, Lawrence, unstationed ----- Grand Rapids, Mich.  
 Miller, Truman, unstationed ----- Wolcottville, Indiana  
 Stalker, Fred, pastoral ----- Arcadia, Mich.  
 Thorpe, Wilbur, pastoral ----- North Branch, Mich.  
 VanCleve, Glen, unstationed ----- Lansing, Mich.

### ORDAINED DEACONESES

Christiansen, Ida L. ----- Honor, Mich.  
 Gardner, Esther ----- 1020 S. Washington St., Owosso, Mich.  
 Kridler, Mrs. Rilla ----- Jamestown, Mich.  
 Ritenburgh, Mrs. E. G. ----- 911 N. Pine, Lansing, Mich.  
 Rogers, Mrs. Howard ----- 1310 Knight Ave., Flint, Mich.

### LICENSED DEACONESES

Ferle, Caroline ----- 625 Allegan St., Lansing, Mich.  
 Freudenthal, Mrs. Lois ----- Flint, Mich.  
 Gordon, Mrs. Ilene ----- 44 E. Bidwell, Battle Creek, Mich.  
 Heins, Mrs. Anna ----- Mason, Mich.  
 Kilbourne, Mrs. Sarah E. ----- Port Huron, Mich.

# JOURNAL OF PROCEEDINGS

## FIRST SITTING

Owosso, Michigan, August 14, 1939

The first sitting of the Michigan District Assembly of the Pilgrim Holiness Churches was opened at 8:30 a.m., August 14th, 1939 by congregational singing led by Rev. W. H. Joppie with Rev. Edgar Haskins at the piano. Prayer was offered by Rev. C. E. Cliff.

Rev. W. H. Joppie introduced Rev. Walter L. Surbrook, General Superintendent, who took the chair. He greeted the Assembly and read scripture from 2 Cor. 6:1-12, exhorting and admonishing in the light of these verses, after which he delivered a very helpful and inspiring address on "The Approved Ministry" subdividing his message under the subjects of life, loyalty and leadership.

The roll was called and corrected.

Moved, seconded and carried that H. W. Stiles be seated as a delegate from Detroit.

Moved, seconded and carried that Mrs. Cora Palmanteer be seated as delegate from Rockford.

Moved, seconded and carried that Mrs. H. B. Kreider be seated as delegate from Sault Ste. Marie.

Moved, seconded and carried that Mrs. Francis Farnsworth be seated as delegate from Muskegon.

Moved, seconded and carried that Mrs. F. D. Reed be seated as delegate from Friendly Mission, Detroit.

Moved, seconded and carried that the first eight seats in the center three sections be fixed as the Assembly bar.

Moved, seconded and carried to fix time of sessions at 8:30 a. m. to 12:00 noon, 2:00 to 5:00 and 7:30 to 9:00 p. m.

An amendment to the previous motion providing that the time for evening session be fixed at 7:00 to 9:00 p. m. was made, seconded and carried.

Motion was made, seconded and carried to accept the Newberry church into the Assembly.

The District Superintendents report was heard.

## DISTRICT SUPERINTENDENT'S ANNUAL REPORT

Greetings to the 39th Annual Assembly:

Through the sovereign grace and wise providence of our God and Saviour we are once more permitted to gather here as we are today. To Him we return thanks and praise for sparing us and giving a measure of prosperity, victory and success during the past year.

God has given us a good year, he has poured out his spirit on us in our revival efforts, resulting in much encouragement among our people and preachers, especially is this true in Traverse City where Sister Bruce is now laboring. A good work is in progress there. Ecorse has also experienced an upward swing with blessed progress. This is true in many places.

Newberry has a splendid new chapel, results of sacrifice and labors of Brother Kreider and the Newberry brethren. We held a most beautiful and spiritual dedication service there which we will not soon forget. A new church was also organized here. Four more parsonages have been added to the District during the year—Croswell, Muskegon and Owosso, and make quite an additional asset to our district.

Prospect for entering new fields is better now than it has been

for years back, and by careful supervision we should reap gratifying results.

A new garage also adds to the beauty of our Camp Grounds and fills a long felt need. The District Council and Brother Mills had agreed to build it on a fifty-fifty basis. This also furnishes storage space as well as splendid Dormitory room.

Death has visited our ministerial ranks the past year and claimed one of our heroes of the cross, Brother G. B. Kulp, whose labors and leadership will long be remembered by our brethren and may the Lord raise up many to fill the gap. Amen!

District finances are in fair shape, we are a bit over the top with the General Budget, but not up with the school nor district bidget; still, we praise God for all that has been accomplished.

Several pastors' salaries have been increased during the year. We feel if the church does well by their servant, other departments will come up in proportion.

We hope our Assembly will legislate something that will help to eliminate the necessity of "pulling" so hard for Camp expenses. We believe a portion of this should be borne by the churches over the district.

Though part of the past year I was not well, I enjoyed my labors among the brethren. More loyal men cannot be found and we pray God to grant another year of his blessed presence among us.

The following is our statistical report for the period from August 11, 1938 to August 11, 1939.

Sermons Preached -----	102	Council Meetings -----	4
Seekers at Altar -----	31	School Board Meetings ----	1
Family Visits -----	116	Executive Board Meetings--	2
Annointed for healing ---	18	Ministerial Comm. Meetings	1
Church Board Meetings ---	88	Special Church Business---	5
Annual Meetings -----	17	Funerals -----	1
Miles Traveled (18,400 miles) -----			\$368.00
Postal Expense -----			21.50
Telegrams and Phone -----			4.15
			<hr/>
Total Expense -----			\$393.65
Salary -----	\$1,737.12		
Tithes -----	11.00		
Offerings -----	68.67		
			<hr/>
Total -----	\$1,816.79		
Expenses deducted -----	393.65		\$1,423.14
			—W. H. Joppie

On motion made, seconded and carried the District Superintendent's report was accepted, with a cheerie Amen!

The Auditing Committee's report was read and on motion seconded and carried it was accepted.

The District Treasurer's report was read and on motion made seconded and carried it was accepted.

The report of the Treasurer of Bible Holiness Seminary was read and on motion seconded and carried it was accepted.

The statistical report was read and on motion made, seconded and carried, it was accepted subject to the "Number of Church Services" being checked.

Moved, seconded and carried that the chair appoint a Committee of three to prepare report blanks for District Zone Activities and also for Women's Missionary Society activities to be submitted with



recommendations.

On motion which was supported the meeting was adjourned.

### SECOND SITTING

The second sitting of the Michigan District Assembly of the Pilgrim Holiness Churches was opened at 2:00 p. m., August 14th, 1939 by song service led by Rev. Russell Mohl with Rev. Ila Bruce at the piano.

Prayer was offered by Rev. A. T. Harris.

Motion was made, seconded and carried that roll call be dispensed with for remainder of Assembly.

Minutes of the morning session were read and approved.

The following named visiting brethren were introduced to the Assembly: Rev. Martin Joppie, Battle Creek; Rev. James Cunningham; Rev. Claud McCullom from Free Methodist Church; Rev. Walter Yoh from Ohio District.

On motion seconded and carried M. M. Joppie of the Battle Creek Church and Richard Hawkins from Pontiac were received into the Assembly.

The recommendation from the Educational and Examining Committee was read and on motion seconded and carried it was received.

The Committee on Young Peoples Society and Women's Missionary Society report blanks was appointed as follows: L. C. Philo, Emer Stace and Thomas Hoos.

The Young Peoples Society Treasurer's report was read and on motion which was seconded it was accepted.

Rev. P. F. Elliott from the Eastern District, a former District Superintendent of that district, was invited to the platform and gave his testimony.

Motion was made, seconded and carried to have election of officers at this time.

Motion was made, seconded and carried to have the District Superintendent appoint tellers. He named the following: Rev. G. V. Skinner, Rev. Russell Mohl, Rev. Kenneth Phipps, Rev. Lester Nelson, Rev. Ellsworth Swanson and Rev. John Hiatt.

The Assembly proceeded to the election of officers with the following results:

Rev. J. R. Thompson was elected District Superintendent.

Rev. C. E. Cliff was elected Assistant District Superintendent.

Rev. M. L. Goodman was elected Secretary.

Rev. A. F. Osborn was elected Treasurer.

Rev. W. H. Joppie, Rev. B. O. Shattuck and Rev. A. C. Doehring were elected Advisory members of the District Council.

Rev. H. T. Mills was elected to serve on the Educational and Examining Board for term expiring 1944 and Rev. B. O. Shattuck was elected to serve on Educational and Examining Board to fill vacancy, term expiring 1940.

On motion seconded and carried the rules were suspended and George DaFoe, Rev. H. T. Mills and Rev. George Lounds were re-elected, by acclamation, to the office of District Trustees for the coming year.

On motion duly supported the meeting was adjourned.

### THIRD SITTING

The third sitting of the Michigan Assembly of the Pilgrim Holiness Church was opened at 7:30 p. m., August 14th, 1939 with congregational singing lead by Rev. L. W. Sturk, Assistant General Superintendent, with Mrs. Helen Karl at the piano.

Prayer was offered by Rev. George Lounds.

Rev. L. W. Sturk took the chair.

Nominations for members of Board of Trustees of Bible Holiness Seminary were submitted by the Council as follows: Rev. Chas. E. Cliff, Rev. W. H. Joppie, Rev. C. V. Holstein, Rev. A. C. Doehring, Rev. Earl G. Ritenburgh, Rev. M. L. Goodman.

On motion seconded and carried it was determined to vote on all three members on one ballot, and the assembly proceeded to the election.

The tellers were excused to count the ballots while the assembly proceeded with the business at hand.

The following resolution was read: "Whereas, at present the District Superintendent is not a member of the examining board, Be it resolved, that the District Superintendent by virtue of his office be a member of said board."

Recommendation by Committee.

On motion which was seconded, the resolution was adopted.

Rev. and Mrs. L. W. Sturk favored the assembly by singing "Follow Me," which was much appreciated.

The following resolution was read:

Be it resolved, that a Committee on Memorials be appointed by the District Superintendent.

A motion was made and seconded that the resolution be adopted.

Tellers reported and announcement was made that Rev. Chas. E. Cliff, Rev. W. H. Joppie, and Rev. C. V. Holstein were elected as members of Board of Trustees of Bible Holiness Seminary.

The recommendation of the Educational and Examining Board relative to ordination and license of candidates was read and on motion made and seconded, the recommendation was adopted. (Names of ordained and licensed listed elsewhere in this record.)

The invitation from the Flint First Church to entertain the next Ministerial Convention was accepted on election by ballot.

The Ways and Means Committee was excused by common consent.

Moved, seconded and carried to excuse the Committee to draft Report Blanks for the Young Peoples Society and the Women's Missionary Society.

A motion was made and supported that the meeting be adjourned.

#### FOURTH SITTING

The fourth sitting of the Michigan Assembly of the Pilgrim Holiness Churches was opened at 8:30 a. m., August 15th, 1939 in the form of a Memorial Service for Rev. G. B. Kulp. The opening congregational song was "In the Cross of Christ I Glory."

Prayer was offered by Mrs. Ella Ewers.

A very appropriate song was sung by Rev. and Mrs. Gaylord Skinner with Rev. Ila M. Bruce at the piano.

Brief addresses were given by each of the following named friends of the deceased: Rev. E. F. Ewers, Rev. B. O. Shattuck, Rev. P. F. Elliott and Rev. W. L. Surbrook. Each speaker told of personal help received through the ministry of Rev. Kulp and left with the assembly the beautiful impression, that while he as an uncompromising preacher of righteousness has gone to be with Jesus his ministry still lives in the hearts of those who heard him.

Rev. H. B. Kreider and P. H. Emlinger were excused from further attendance at the assembly because of a funeral.

The Ways and Means Committee submitted the following resolutions:

"Be it resolved, that the District Superintendent's salary be set,

and his traveling expenses shall be allowed above his salary.

Be it further resolved, that the District Council set his salary and expenses."

On motion made and seconded the resolution was adopted.

The following resolution was read:

"Be it resolved, that our secretary be authorized to inform the General Office to return all checks to our District Treasurer that all finances may pass through the records of our Treasurer."

Recommended by the committee.

On motion made and seconded the resolution was adopted.

The following resolution was read:

"Whereas, the District is at this time in dire financial need

Therefore, be it resolved that we as an Assembly instruct our pastors to take a liberal free-will offering for District Budget on or before the first day of September, and forward the same to District Treasurer."

Recommended by the Committee.

On motion made and seconded the resolution was adopted.

The following resolution was read:

"Whereas the district camp meeting is steadily growing and whereas all our people are directly or indirectly benefited, and to eliminate too many public offerings during the camp meeting,

Therefore, be it resolved, that the churches be rated according to their financial strength and one-half of the camp meeting expense be raised among the churches of the district. All money raised for this purpose shall be in the hands of the District Treasurer not later than thirty days prior to the camp meeting.

Be it further resolved, that the apportionment be left to the District Council."

On motion made and seconded the resolution was adopted.

A letter of greeting was read from F. H. Harmon.

Moved, seconded and carried to send letter of consolation to Rev. Sadie Strong, a letter of commendation to Governor Luren D. Dickinson and letters of greeting to Rev. S. I. Emery, Rev. R. W. Chatfield, and Rev. F. H. Harmon and B. B. Ferris.

The Committee appointed to draft report blanks for the Young People's Society and the Women's Missionary Society reported that blanks had been drafted and recommended that space be provided in the next year's assembly minutes to publish reports from these societies.

On motion made and seconded the resolution was adopted.

It was moved, seconded and carried to extend a vote of thanks to Rev. and Mrs. Ellsworth Swanson for preparing such good meals during camp and assembly.

On motion made, seconded and carried the roll was called to determine number of 1939 Assembly minutes desired by the various churches.

Motion was made, seconded and carried to print 500 copies of the 1939 District Assembly Minutes.

Motion was made, seconded and carried that the Memorial Committee give proper recognition to the memory of Rev. G. B. Kulp, in the minutes.

On motion, seconded and carried, the Council was authorized to complete all unfinished business of the Assembly including the approving of the minutes of the last sitting.

Announcement was made that Rev. W. H. Joppie, outgoing District Superintendent, would enter the evangelistic field and the chair urged the churches to keep him busy.

On motion, seconded and carried, the District Council was authorized and instructed to take care of Camp Meeting advertising prior to camp and the Publicity Committee to take care of news during the Camp and Assembly.

The Chair called attention to Standing Rule No. 2, of the Minutes of 1938 Assembly giving instructions to have it revised in accordance with manual. (Page 84.) He also suggested that Rule No. 3 of same minutes be corrected.

On motion, seconded and carried, the time of this sitting was extended to take care of ordination service, which was the next order of business.

The congregational song, "A Charge to Keep I Have", was led by Rev. A. C. Doering.

Prayer was offered by Rev. M. L. Goodman.

The following Scriptures were read by Rev. C. E. Cliff, reading from Titus 3:1-11; Rev. W. H. Joppie, 2 Tim. 4:1-8; Rev. J. R. Thompson, 1 Tim. 3. The candidates for ordination were Rev. Mel. T. Rothwell, Rev. Arley F. Osborn and Rev. Ila M. Bruce.

Rev. Walter L. Surbrook, General Superintendent, gave the charge and the candidates were ordained by the laying on of hands.

A rising vote of thanks was given in appreciation of the kindly and faithful services of the General Superintendent during the assembly.

A rising vote of thanks was given George Dafoe for the beautiful flowers donated for the rostrum during the assembly.

Following the closing prayer a motion was made and seconded that the assembly be adjourned.

---

#### COMMITTEES FOR 1939-1940

**Ordination:** W. L. Surbrook, J. R. Thompson, C. E. Cliff, B. O. Shattuck, M. L. Goodman, W. H. Joppie.

**District Resolutions:** H. T. Mills, R. K. Ballard, B. E. Manker, L. R. Neff, T. H. Hoos.

**Statistical:** M. L. Goodman, A. C. Doehring, G. E. Stace.

**Ways and Means:** C. E. Cliff, S. I. Emery, L. C. Philo, C. V. Holstein.

**Auditing:** H. B. Kreider, Howard Rogers and L. N. Nelson.

**Reception:** George Lounds, Emil Shetler.

**Foreign Missions:** Mrs. E. F. Ewers, Mrs. W. L. Surbrook, Mrs. J. E. Strong, Mrs. Anna Heins, Mrs. George Lounds.

**Home Missions:** District Council.

**Editing:** M. L. Goodman, Kenneth Phipps, L. R. Neff, E. C. Swanson, D. F. Price.

**Publicity:** T. H. Hoos, R. K. Ballard, J. F. Neulman.

## REPORT OF MICHIGAN DISTRICT TREASURER

For Year Ending August 1, 1939

Balance Brought Forward -----		\$ 551.26
Divided as follows:		
Camp Fund -----	\$ 177.11	
Home Missions -----	137.42	
District Expense -----	34.98	
Ministerial Relief -----	110.52	
General Assembly Delegate Expense ----	91.23	551.26
<hr/>		
Received for General Budget -----	5,075.75	
Paid out for General Budget -----	5,075.75	
<hr/>		
Forwarded and Received, Camp Fund -----	5,194.03	
Paid Out of Camp Fund -----	5,080.92	113.11
<hr/>		
Received for B. H. S. Debt Fund -----	182.12	
Paid Out for B. H. S. Debt Fund -----	182.12	
<hr/>		
Received for District Superintendent -----	1,629.31	
Paid Out to District Superintendent -----	1,629.31	
<hr/>		
Forwarded and Received for Home Missions--	772.97	
Paid Out to Home Missions -----	647.00	125.97
<hr/>		
Forwarded and Received for District Expense	267.82	
Paid Out for District Expense -----	259.50	8.32
<hr/>		
Forwarded and Received for Ministerial Relief	201.85	
Paid Out for Ministerial Relief -----	160.24	41.61
<hr/>		
Forwarded and Received for General Assembly Delegate Expense -----	482.44	
Paid Out for General Assembly Delegate Ex.	467.50	14.94
<hr/>		
Received for Beulah Rescue Home -----	22.89	
Paid Out for Beulah Rescue Home -----	22.89	
<hr/>		
Total Received for Year -----	\$ 13,829.20	
Total Paid Out for Year -----	13,525.25	
<hr/>		
Balance Cash on Hand -----		\$ 308.95

Note: The following amount was forwarded by different churches directly to the General Treasurer which applies to our Annual payment to the General Budget -----

\$ 942.91

Submitted by,

A. F. Osborn, Dist. Treasurer

**TREASURER'S REPORT OF CURRENT FUNDS OF B. H. S.**

**For the year ending June 30, 1939.**

Cash on hand July 1, 1938-----		\$ 101.70
Received from Tuitions -----	\$ 12,181.65	
Received from Pledges -----	567.25	
Received from Cash-Gifts -----	565.16	
Received from Sales & Incidentals -----	1,856.32	
	<hr/>	
Total Receipts -----		\$ 15,170.38
TOTAL, inc. Cash on Hand, July 1, '38----		\$ 15,272.08

**Disbursements**

Paid for Provisions -----	\$ 3,247.24	
Paid for Fuel, Water, Electricity -----	1,282.29	
Paid for Telephone and Printing -----	104.41	
Paid for Salaries and Incidentals -----	10,727.59	
	<hr/>	
Total Disbursements -----		\$ 15,361.53
Cash on Hand, June 30, 1939 (Overdraft)---	\$ 89.45	

**TREASURER'S REPORT OF DEBT FUND OF B. H. S.**

**For the Year Ending June 30, 1939**

Cash on Hand, July 1, 1938 -----	\$ 1,103.95	
Received during the year -----	2,832.63	
	<hr/>	
TOTAL, inc. Cash on Hand, July 1, '38		\$ 3,936.58

**Disbursements**

Paid on Mortgages, Notes, Interest, Bonds, and Accounts -----	\$ 3,406.89	
Discounts obtained -----	120.00	
New Obligations Discovered -----	404.00	
Remaining Debt -----	\$ 6,250.00	
Cash on Hand June 30, 1939 -----		\$ 529.69

Signed: H. T. Mills, Treasurer B. H. S.

STATISTICAL REPORT

Name of Church	Members on Roll Last Report	Removals	Additions	Present Membership	Preaching Services	Prayer Services	Revivals	Total Number of Services	No. Advocate Sub's.
Applegate	66	1	3	68	128	104	2	232	25
Ann Arbor	37	0	8	45	124	45	2	124	23
Ashley	18	1	0	17	126	43	2	169	2
Alma	45	0	7	52	132	90	2	222	26
Battle Creek	206	9	11	208	128	102	2	347	54
Burnips	46	3	2	45	118	43	2	163	15
Bellaire	52	3	2	51	116	47	1	163	7
Crosswell	21	0	7	28	92	38	1	130	10
Chief	14			14	71	28	2	99	4
Detroit (First)	85	14	8	79	141	70	3	211	
Detroit (2nd—No Report)	32		4	36					
Detroit (Friendly Mission)	33	3	4	34	104	33	1	159	3
Ellsworth	11	0	1	12	79	45	1	124	4
Ecorse	18	0	12	30	151	44	3	194	30
Eaton Rapids	36	4	10	42	102	94	2	223	
Flint (First)	221	34	14	201			2		
Flint (Second)	51	3	11	59	86	96	2	218	21
Flint (Third)	78	7	7	78	127	146	2	285	
Flint (4th) Elm Park	32	3	6	35	127	69	2	196	12
Flint (5th) Lapeer Road	22	4	5	23	125	57	2	182	6
Grand Rapids	115	8	6	113	135	132	2	285	50
Good Harbor	19		1	20	133	39	1	172	2
Hastings	38	5	2	35	106	117	1	244	27
Jackson	68	8	2	62	134	83	3	196	15
Jeddo	16		1	17	48	50	1	112	
Lansing (First)	68	3		65	121	76	2	197	
Lansing Immanuel	25	4		21	99	52	2	151	5
Lansing Grace Street			14	14	144	30	5		3
Monroe	62	1	4	65	134	231	2	365	
Muskegon (No report)	49	18	4	35					
Merrill	37	3	6	40	99	76	2	175	9
North Branch	18	3	1	16	104	92	2	196	15
Newberry			11	11	13	30		43	6
Owosso	95	5	11	101	100	50	2	150	
Port Huron	69	1	8	76	138	130	2	293	25
Phelps	17	2	1	16	46	40		86	
Pontiac	17	2	6	21	89	57	2	146	6
Pierport	15	2		13	48	47	2	95	5
Rockford	38	8	4	34	109	79	1	240	10
Sault Ste. Marie	39	4	8	43	104	52	3	186	10
Traverse City	15	3	2	14	137	46	2	183	8
Bruce (No report)			14	14					
	1,944	169	228	2,003	4,018	2,703	73	6,956	438

## FINANCIAL REPORT

Name of Church	Brought Forward	Offerings	Total Receipts	Pastor's Support	Institutions	District Budget	General Budget	Evangelist	Indebtedness	Incidentals	Total Expenditures	Balance on Hand	Total Valuation of Property	Total Indebtedness
Applegate -----	85.48	2,223.62	2,259.10	1,225.40	254.16	71.90	164.53	190.00		284.48	2,190.47	68.63	3,000.00	
Ann Arbor -----	287.91	2,388.38	2,678.29	764.53	54.00	40.00	55.96	177.83	885.37	633.11	2,610.80	65.49	9,500.00	
Ashley -----	2.85	327.01	329.86	171.50	2.00	9.84	31.60	26.78		84.99	326.71	3.15	450.00	200.00
Alma -----	2.70	1,644.15	1,646.85	928.19	99.08	30.00	88.07	262.15	60.00	160.46	1,628.00	18.85	2,000.00	450.00
Battle Creek -----	18.34	6,660.97	6,679.31	2,409.37	447.05	107.24	1,186.24	565.16		1,882.65	6,597.71	81.60	43,500.00	
Burnips -----	118.89	2,468.94	2,605.83	866.98	51.84	118.95	306.25	216.71	730.70	275.51	2,566.94	38.89	7,000.00	1,200.00
Bellaire -----	3.14	1,205.50	1,208.64	631.32	27.00	43.60	62.02	49.81	136.00	257.89	1,207.64	1.00	2,000.00	34.00
Croswell -----	8.83	1,379.11	1,387.94	524.46	26.22	15.66	48.97	40.00	484.95	247.47	1,387.73	.21	5,000.00	850.00
Chief -----	3.60	258.57	262.17	110.25	8.00	16.90	18.64	79.69		49.55	259.27	2.90	1,000.00	
Detroit 1st -----	192.77	4,204.63	4,397.40	1,820.00	233.70	83.50	65.82	253.30	747.05	900.27	4,103.64	293.76	123,000.00	3,692.10
Detroit 2nd -----	20.23	1,530.42	1,550.65	818.02	22.00	13.93	36.76	211.29			1,550.65		3,000.00	
Det., Friend. Mssn.	3.13	854.66	857.79	294.53		21.24	10.00	63.78		463.73	843.28	25.21		

91



Ellsworth	3,17	568.33	571.50	311.31	5.00	13.75	26.50	86.46		83.26	561.28	10.22	1,600.00	
Ecorse		1,341.08	1,341.08	312.00		29.75	54.00	205.00		733.24	1,095.54	7.09		
Eaton Rapids	9.36	1,123.54	1,123.90	485.00		18.51	27.51	70.76	85.06	308.70	1,095.54	37.36	2,000.00	255.76
Flint 1st	37.31	6,479.86	6,516.99	2,142.43	394.68	160.07	584.56	436.95	761.65	1,883.98	6,304.32	152.67	10,000.00	106.00
Flint 2nd	18.92	2,205.44	2,224.36	1,109.00	107.09	119.23	133.97	125.00	208.20	524.78	2,215.91	8.45	2,500.00	2,291.23
Flint 3rd, Brown St.	.16	2,747.65	2,747.81	1,174.85	189.88	85.56	217.62	233.92	48.00	752.06	2,701.89	45.92	3,000.00	
Flint 4th, Elm Park		1,683.34	1,683.34	856.47	32.50	42.06	68.67	197.00	163.20	322.37	1,682.27	1.07	7,000.00	1,853.65
Flint 5th, Lapeer Rd.	5.12	1,069.46	1,084.58	382.13	38.60	36.03	76.74	149.35	73.51	327.2	1,083.54	1.04	3,500.00	505.00
Grand Rapids	2,746.57	4,535.45	7,282.02	1,825.00	67.86	100.92	287.43	370.33	240.00	1,404.34	4,295.88	2,986.14	4,000.00	1,960.97
Good Harbor	4.66	472.14	476.80	404.65		3.07	19.34	27.01		14.48	468.55	7.76		
Hastings		846.09	846.09	383.00		12.00	50.49	76.00	125.00	194.81	841.30	4.79		
Jackson	7.79	1,910.50	1,918.29	780.00	15.18	46.77	46.86	178.10	578.28	268.50	1,913.69	4.60	8,000.00	3,668.22
Jeddo	6.25	606.62	612.87	335.09	24.99	12.35	25.45	44.00	100.00	70.99	612.87			
Lansing	.74	2,790.63	2,791.37	1,268.50	71.78	68.01	180.10	121.50	240.00	837.01	2,786.90	4.77		1,926.48
Lansing, Emmanuel		582.88	582.88	206.49		8.00		36.86	272.82	58.71	582.88		4,000.00	2,829.44
Lansing, Grace St.			237.04					15.00	34.75	134.40	184.25	6.41	3,000.00	2,808.58
Monroe	95.33	3,315.94	3,411.27	1,087.50	245.71	122.00	214.87	165.00	205.87	1,243.90	3,284.85	126.42	10,000.00	2,188.32
Merrill	24.12	1,510.70	1,534.70	850.58	113.72	98.23	111.43	117.00		212.02	1,503.98	30.72	5,000.00	
North Branch	6.64	990.42	997.06	512.43	63.00	37.85	83.71	111.56		175.56	988.72	8.32		
Newberry	268.80	19.14	287.94	32.62				5.00	249.50		287.12	.82	2,000.00	258.99
Muskegon-No report														
Owosso	107.30	3,031.95	3,139.25	1,300.00	128.00	150.84	94.77	204.67		1,222.58	3,100.86	88.39	7,000.00	2,169.76
Port Huron	101.20	3,153.81	3,255.01	1,429.11	219.23	171.02	333.07	186.00	436.07	359.95	3,134.45	120.56	9,500.00	1,474.83
Phelps	14.14	403.38	417.52	256.27	5.00	2.80	36.00			115.68	415.75	1.77	1,250.00	
Pontiac	7.19	822.17	829.36	238.74	17.13	13.52	22.53	135.00		276.33	703.75	125.61		
Pierport		400.49	400.49	256.74	28.00	5.75	33.71	16.40	18.88	59.89	400.49		500.00	
Rockford	15.26	970.01	985.27	523.00	27.90	46.00	71.14	40.00		278.41	958.45	26.28	200.00	
Sault Ste. Marie	11.79	1,837.49	1,849.28	1,016.68	70.75	43.02	60.51	213.75	266.28	164.45	1,835.44	13.84	5,000.00	233.95
Traverse City	1.49	740.68	742.17	263.56		34.01		136.86	149.50	154.90	738.84	3.33	3,000.00	1,771.45
<b>Total</b>	<b>\$4,191.18</b>	<b>\$71,305.15</b>	<b>\$75,754.07</b>	<b>\$30,305.70</b>	<b>\$3,090.38</b>	<b>\$2,053.88</b>	<b>\$4,935.34</b>	<b>\$5,840.98</b>	<b>\$7,400.64</b>	<b>\$17,423.03</b>	<b>\$71,342.05</b>	<b>4,384.04</b>	<b>\$180,800.00</b>	<b>\$37,004.69</b>

## MINISTERIAL REPORT

Name of Pastor	Name of Church	Regular Church Services	Prayer Services	Times Preached	Pastoral Calls	Revivals Elsewhere	Number of Seekers	Baptisms	Children Dedicated	Prayed with for Healing	Marriages	Funerals	Cash Support	Other Support	Total Support
Brillhart, J. C. ----	Flint (1st) -----	113	140	86	414	2	377	--	7	15	3	8	1,870.44	125.27	1,995.71
Ballard, A. K. ----	Jackson -----	105	57	77	535	1	148	4	4	73	1	3	785.00	24.00	809.00
Bruce, Ila M. ----	Traverse City -----	19	21	229	42	10	210	--	1	12	--	1	545.65	30.00	575.65
Brown, Leon ----	Good Harbor & T. C. -----	101	58	101	89	--	1	2	--	4	--	1	421.31	134.33	555.64
Cliff, C. E. ----	Flint (3rd) -----	98	90	80	331	--	51	9	6	24	1	6	992.49	182.36	1,179.85
Diller, H. C. ----	Pontiac -----	90	41	70	47	--	10	--	4	16	--	--	238.74	20.00	258.74
Doehring, A. C. ----	Port Huron -----	104	112	115	494	2	152	--	2	56	3	7	1,425.81	175.55	1,601.36
Emlinger, P. T. ----	Alma -----	104	90	90	--	--	30	--	5	--	5	5	845.90	95.32	941.22
Fast, T. M. ----	Eaton Rapids -----	102	44	88	300	--	--	--	3	--	1	1	75.00	.10	75.00
Goodman, M. L. ----	Battle Creek -----	113	64	138	530	2	395	--	5	50	--	15	2,480.37	255.00	2,735.75
Holstein, C. V. ----	Grand Rapids -----	151	112	133	425	1	225	--	--	45	2	1	1,911.00	--	1,911.00
Hoos, T. H. ----	Hastings -----	183	81	211	332	--	33	8	--	41	2	6	373.00	135.25	518.25
Hastings, E. J. ----	Kalamazoo -----	160	37	98	620	--	27	--	--	21	--	--	417.00	158.10	575.10
Huffman, Lawrence	Lansing (Immanuel)	130	60	94	260	--	30	--	--	12	--	--	236.54	39.09	275.63
Hoos, C. A. ----	Bruce, So. Ste. Marie -----	--	70	166	108	--	10	--	--	2	--	1	713.04	77.00	790.04
Joppie, A. S. ----	Owosso -----	184	45	187	325	3	318	--	8	20	--	5	1,250.00	294.00	1,544.00
Kraatz, B. A. ----	Croswell & Jeddo -----	141	76	142	712	--	19	--	13	14	3	2	859.54	31.28	890.82
Kreider, H. B. ----	Sault Ste. Marie -----	104	52	170	380	2	120	2	--	3	5	5	771.68	245.00	1,016.68
Kridler, Albert ----	Chief & Pierport -----	84	71	96	280	--	12	--	--	20	1	--	282.23	94.04	376.27
Lounds, George A. ----	Monroe -----	104	138	145	305	2	78	8	--	41	2	9	1,147.90	39.50	1,187.40
Lash, Lillian R. ----	Ashley -----	111	43	91	175	--	10	--	--	5	--	4	171.50	31.38	202.88
Manker, B. E. ----	Flint (2nd) -----	--	27	180	100	8	282	6	--	6	2	2	797.00	615.00	1,412.00
Meulman, J. F. ----	Flint (4th) -----	103	69	137	200	1	--	3	--	20	3	1	856.45	85.87	942.32
Mohl, R. S. ----	Flint-Lapeer Rd. -----	98	53	78	75	--	30	--	2	--	1	1	425.14	22.00	447.14
Neff, L. R. ----	Applegate -----	124	37	90	594	1	12	--	10	15	3	7	1,389.40	62.81	1,451.21
Nelson, L. N. ----	Bellaire -----	102	44	119	125	1	25	--	--	4	1	3	671.91	97.38	769.29
Osborn, A. F. ----	Merrill -----	99	55	126	301	2	48	--	--	15	1	1	861.26	171.57	1,032.83

Price, D. F.	Detroit (1st)	141	60	105	403	1	60	2	10	2	4	1,820.00	75.00	1,895.00	
Polmanteer, I. N.	Rockford	109	79	85	134	60	2	11	2	1	523.00	17.55	540.55		
Rodgers, H. W.	Detroit (2nd)	76	40	97	133	1	49	1	1	1	818.02	182.86	1,000.88		
Reed, F. D.	Detroit Friend. Miss.	137	90	224	1	75	1	2	5	2	272.78	21.75	294.53		
Shetler, E. A.	Ann Arbor	95	44	113	250	25	1	2	1	2	764.53	130.00	894.53		
Stace, G. E.	Burnips	118	43	87	227	30	2	4	2	4	856.14	50.00	906.14		
Swanson, E. C.	Ellsworth & Phelps	61	20	144	5	87	1	1	1	1	582.35	21.42	603.77		
Thompson, J. R.	Lansing (1st)	98	87	102	387	47	4	9	1	5	1,260.00	41.00	1,301.00		
Thorp, W. M.	North Branch	104	104	90	137	13	11	4	9	3	526.60	78.75	605.35		
Van Cleve, Glen	Lansing, Grace St.	144	30	110	336	1	131	5	34	2					
<b>Unstationed</b>															
Appleton, V. S.	Owosso		2	13											
Doehring, S. E.	Merrill	14	10	4	30	5	2				5.00		5.00		
Ewers, E. F.	Owosso		34	43	201	1	10	1	10	1	117.83	4.84	121.67		
Ewers, Mrs. E. F.	Owosso		15	37	187	1	14		14		62.27		62.27		
Hoos, Mrs. T.	Hastings		7	6	44						25.00		25.00		
Hiatt, J.	Owosso	4	3	8					1						
Joppie, M. W.	Battle Creek			96	50	4									
Lounds, Mrs. Geo.	Monroe	8	30	8	150				8						
Manker, Mrs. B. E.	Flint		22	40	125	20	1	2			314.00		314.00		
Mudge, I. L.	Owosso		1	6	50					1	11.00		11.00		
Orr, George A.	Saginaw	34	12	37	30	14		9	1	1	31.95		31.95		
Phipps, K. W.	Applegate	9	2	20		2					35.50		35.50		
Robinson, H. L.		48	10	13	126	17		5		1					
<b>Educational</b>															
Mills, H. T.	Owosso														
Philo, L. C.	Owosso			50		1	50		10	1	697.50		697.50		
<b>Evangelists</b>															
Bennett, H. S.	Ann Arbor		3	325	25	18	631	6	41	1	1,566.81	40.00	1,606.81		
Chatfield, R. W.	Owosso	284		280		17		20		1	1,302.65		1,302.65		
Emery, S. I.	Bellaire	252		291							1,755.10	15.00	1,770.10		
Morgan, C. E.		233		233	150	12	100			5	667.13	57.30	724.43		
Skinner, G. V.	Owosso	20	11	43		1	51		11		641.16	21.75	662.91		
Skinner, Mrs. G. V.	Owosso	14	9	10			3				100.00	50.00	150.00		
<b>Missionary</b>															
Gaylord, Mrs. M.	Owosso			46		13					340.00		340.00		
<b>Totals</b>		4,830	2,465	5,987	11,548	111	4,151	52	121	723	52	127	\$37,920.62	\$4,048.32	\$41,919.82

61

## SUNDAY SCHOOL REPORT

Location	Enrollment	Number of Sessions	Average Attendance	Total Attendance	Cash Forwarded	Offerings	Special Offerings	Total Receipts	Literature	Incidentals	Total Expenditures	Balance on Hand
Applegate -----	138	52	106	5,533	32.80	196.04	20.04	248.88	82.04	134.65	216.69	32.19
Ann Arbor -----	163	52	84	4,344	10.90	217.92	-----	228.82	110.79	103.38	214.17	14.65
Alma -----	-----	52	45	2,343	10.90	154.83	20.17	185.90	70.68	111.16	180.84	5.06
Ashley -----	42	48	19	835	5.51	28.67	4.43	38.61	31.75	4.43	38.18	2.43
Allegan Mission -----	-----	50	20	1,031	-----	39.29	-----	39.29	27.29	8.50	35.79	3.50
Battle Creek -----	344	52	274	14,261	63.78	618.61	2,147.86	2,830.25	297.10	2,483.15	2,780.25	50.00
Burnips -----	104	49	72	3,539	37.36	204.97	-----	242.33	61.93	151.74	218.67	28.66
Bellaire -----	67	52	43	2,252	3.51	62.92	61.36	127.79	48.01	73.54	121.55	6.24
Croswell -----	105	50	84	4,025	1.00	74.81	42.16	117.97	60.96	28.61	89.57	5.93
Chief -----	25	49	14	670	3.42	12.42	10.51	22.93	9.97	1.50	11.47	.95
Detroit 1st -----	250	52	145	7,540	13.40	349.97	265.92	629.29	226.81	375.28	602.09	27.20
Detroit 2nd -----	83	52	66	3,280	6.82	194.27	15.17	251.26	53.04	198.22	251.26	-----
Detroit Friendly Miss'n.	203	52	126	6,541	5.19	208.10	86.66	294.76	97.65	78.09	272.84	21.92
Ellsworth -----	73	52	51	2,660	13.15	126.31	-----	139.46	59.27	69.81	129.08	10.38
Eaton Rapids -----	100	52	88	4,602	12.60	116.48	62.48	191.56	95.80	93.93	189.73	1.83
Ecorse -----	80	52	51	2,662	-----	105.78	9.38	115.16	66.36	44.46	110.82	4.34
Flint 1st -----	352	52	165	8,580	207.41	417.01	-----	624.42	585.25	-----	585.25	39.17

70

Flint 2nd -----	180	51	132	6,726	19.60	204.72	44.02	268.34	131.15	108.31	239.46	28.88
Flint 3rd -----	288	52	160	8,316	19.58	283.16	53.27	366.01	199.15	142.72	341.87	24.14
Flint 4th (Elm Park) --	114	52	103	5,372	7.16	177.39	27.74	212.29	120.50	87.42	208.00	4.29
Flint 5th (Lapeer Rd.) -	162	52	81	4,238	19.50	164.68	44.00	228.18	71.10	145.86	216.96	11.22
Grand Rapids -----	225	51	166	8,455	139.24	238.45	229.09	606.78	157.16	338.72	494.88	110.90
Good Harbor -----	30	46	18	941	-----	23.66	-----	23.66	16.13	1.80	17.93	5.73
Hastings -----	112	52	36	1,876	3.73	64.27	-----	68.00	65.03	1.77	66.80	1.20
Jackson -----	181	52	124	6,457	.01	166.98	14.80	181.79	144.17	26.62	170.79	11.00
Jeddo -----	35	51	30	1,516	9.91	55.26	-----	65.17	29.84	26.36	56.20	8.97
Kalamazoo -----	-----	37	21	770	-----	23.85	-----	23.85	-----	-----	18.98	4.87
Lansing 1st -----	119	50	98	4,874	3.21	137.75	165.00	305.96	60.52	238.75	298.87	7.09
Lansing, Tower Garden	60	48	34	1,520	8.44	34.85	3.01	46.30	28.85	9.35	38.20	8.06
Lansing Immanuel -----	106	51	67	3,103	4.23	130.23	-----	134.46	87.59	46.68	134.27	.19
Lansing Grace St. -----	130	13	59	1,081	128.46	-----	-----	128.46	40.68	87.78	128.46	-----
Monroe -----	286	52	238	12,301	20.79	303.87	28.01	331.88	181.13	131.85	312.98	39.69
Merrill -----	-----	50	53	2,672	18.51	77.26	25.78	121.55	51.23	50.31	101.54	20.01
Muskegon (No report)	-----	-----	-----	-----	-----	-----	-----	-----	-----	-----	-----	-----
North Branch -----	68	52	49	2,560	8.85	74.14	9.35	92.34	55.66	29.25	84.91	7.43
Newberry -----	-----	6	34	204	-----	2.49	-----	2.49	-----	.50	.50	2.44
Owosso -----	256	52	144	7,466	3.21	303.78	19.43	326.42	127.80	187.00	314.80	11.60
Port Huron -----	190	52	135	7,018	55.70	300.10	202.32	558.12	140.30	359.69	499.99	58.13
Phelps -----	44	48	39	1,865	-----	52.21	-----	52.21	45.71	6.50	52.21	-----
Pontiac -----	195	52	70	3,709	5.42	79.11	14.28	98.81	61.46	22.34	83.80	15.01
Pierport -----	16	48	14	649	4.58	32.68	-----	37.26	23.43	8.49	31.92	5.34
Rockford -----	80	52	46	2,357	6.81	134.65	76.09	217.55	48.12	167.02	215.14	2.41
Sault Ste. Marie -----	110	52	87	4,500	3.74	107.38	50.87	161.99	53.65	102.17	155.82	6.17
Traverse City -----	38	51	20	1,074	2.35	38.68	.84	41.87	25.29	16.58	41.87	-----
	5,505	2,095	3,510	176,314	\$ 920.91	\$6,140.45	\$3,750.42	\$10,962.42	\$3,950.31	\$6,304.11	\$10,370.40	\$649.22

## YOUNG PEOPLES REPORT

Name of Society	Active Members	Associate Mem's.	Honorary Mem's.	Regular Services	Other Services	Cash Forwarded	Offerings	Total Receipts	Local Expenditures	Zone Expense	State Expense	Missionary	Total Expense	Bal. on Hand
Applegate -----	14	5	8	37		1.96	47.14	49.10	42.00		5.00		47.00	2.10
Ann Arbor -----	21	10	17	35		10.52	26.83	37.35	5.11	5.43		11.35	21.89	15.46
Alma -----	9	10	2	47			22.60	.85	13.00	5.00	5.00		18.85	3.75
Battle Creek -----	62	3	16	22		22.58	88.18	110.76	32.95	42.69	5.00		80.64	30.12
Burnips -----	17	12		33		5.00	39.63	44.63	9.33	10.42		11.19	30.94	13.69
Detroit (First) -----	8	4	4	45		13.39	43.10	56.49	5.14	14.45			19.59	36.90
Detroit-Friendly Mission	15	1	5	38		7.36	48.57	55.93		36.38			36.38	19.55
Eaton Rapids -----	13	1	7	52	4	4.19	35.35	39.54	18.11	3.06		5.00	26.17	13.37
Ecorse -----	20	6	8	48	20	.69	46.63	47.32	27.99	17.00			44.99	2.33
Flint (First) -----	36	6	8	49	50	34.57	85.64	120.21	91.01	17.45			108.46	11.75
Flint (Second) -----	22	4	2	48	12	3.75	149.19	52.92	126.88	9.50			136.38	12.81
Flint (Third) -----	30	13	34	47		2.41	39.21	41.62	17.09	10.14			27.23	14.39
Flint (Fourth) -----	17	8	8	44	12	2.52	19.35	21.87	6.77	13.77			20.54	1.33
Grand Rapids -----	24	11		43	41	25.32	396.13	421.45	288.06	51.48		27.28	366.82	54.36
Hastings -----				45		.10	8.51	8.61	5.05	2.70			7.75	.86
Jackson -----	26	6	7	48	12		21.81	21.81	10.60	7.00			17.60	4.21
Lansing (First) -----	20	24	46	40			24.36	24.36	12.98	5.00			17.98	6.38
Lansing-Immanuel -----	8	16	15	20	4		13.00	13.00	10.31				10.31	3.00
Monroe -----	20	6	11	49	3	40.69	81.59	139.55	74.23			35.00	129.43	10.12
Merrill -----				50		.01	10.92	10.93	1.75	5.00	.10		6.75	4.18
Muskegon (No Report)														
North Branch -----						3.62	11.91	15.53	14.50	1.00			15.50	.03
Owosso -----	33	2	2	38	8	9.60	102.47	112.07	67.48	22.20		15.05	104.73	7.34
Pontiac -----	15	2	4	53	12		45.09	45.09	23.76	15.04			38.80	6.29
Sault Ste. Marie -----	12	7	3	98	1		19.59	19.59		5.37		14.22	19.59	
Traverse City -----	8	8		5		2.58		2.58	2.58				2.58	
Port Huron -----	29	2	9	43		5.91	35.03	40.94	32.42	5.00			37.42	3.52
<b>Total -----</b>	<b>479</b>	<b>167</b>	<b>216</b>	<b>1,077</b>	<b>179</b>	<b>\$ 196.77</b>	<b>\$1,461.83</b>	<b>01,675.75</b>	<b>\$ 926.95</b>	<b>\$ 313.08</b>	<b>\$ 15.10</b>	<b>\$ 119.09</b>	<b>\$1,394.85</b>	<b>\$ 277.54</b>

22

## DEACONESS REPORT

Name	Field of Labor	Church Services Conducted	Prayer Services	Cottage Prayer Services	Other Services	Times Preached	Visits	Homes Prayed In	Poor Helped	Souls Prayed With	No. Professed Regeneration	No. Professed Sanctification	Advocate Subscriptions	Support
Christiansen, Ida L.	Honor	57	32	53	26	57	468	308			21	3	3	\$ 168.17
Ferle, Caroline	Lansing		10	3	49		50	30		16			5	
Gorton, Eileen	Battle Creek			2	45		45	40	4	3			1	
Heins, Anna C.	Lansing & Mason	1			10	1	20	1		10	2	1		
Kridler, Rilla	Chief & Pierport	17	1	6	3		219	133	11	11	5	5	1	7.14
Kilborne, Sarah E.	Port Huron			33			52	52	12	20				
Total		75	43	99	133	58	854	564	27	60	28	9	10	\$ 175.31